

KEY PLAN
SCALE 1:100000

LEGEND:

- BOUNDARY OF HKSAR
- 500m ASSESSMENT AREA
- TENTATIVE WORKS AREA
- AQO CRITERIA
- AIR SENSITIVE RECEIVERS COMPLIED WITH AQO CRITERIA.
- AIR SENSITIVE RECEIVERS EXCEEDED AQO CRITERIA.

P3	NOV 10	MMH	FINAL ISSUE	HC	HT
P2	SEP 10	MMH	GENERAL REVISION	HC	HT
P1	AUG 10	MMH	FIRST ISSUE	HC	HT
Rev	Date	Drawn	Description	Ch'k'd	App'd

Mott MacDonald

20/F Two Landmark East
100 How Ming Street
Kowloon
Hong Kong
T +852 2828 6787
F +852 2827 1823
W www.mottmac.com.hk

Client

CEDD

**CIVIL ENGINEERING
AND DEVELOPMENT
DEPARTMENT**

Project

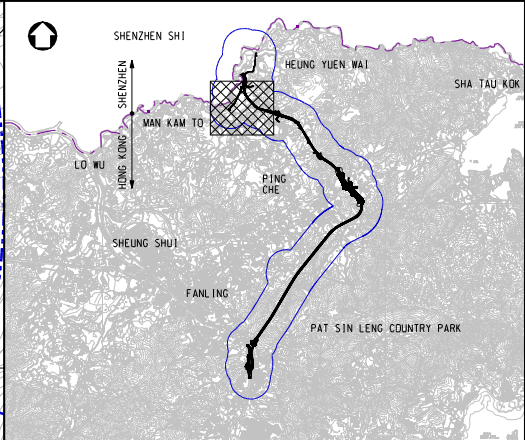
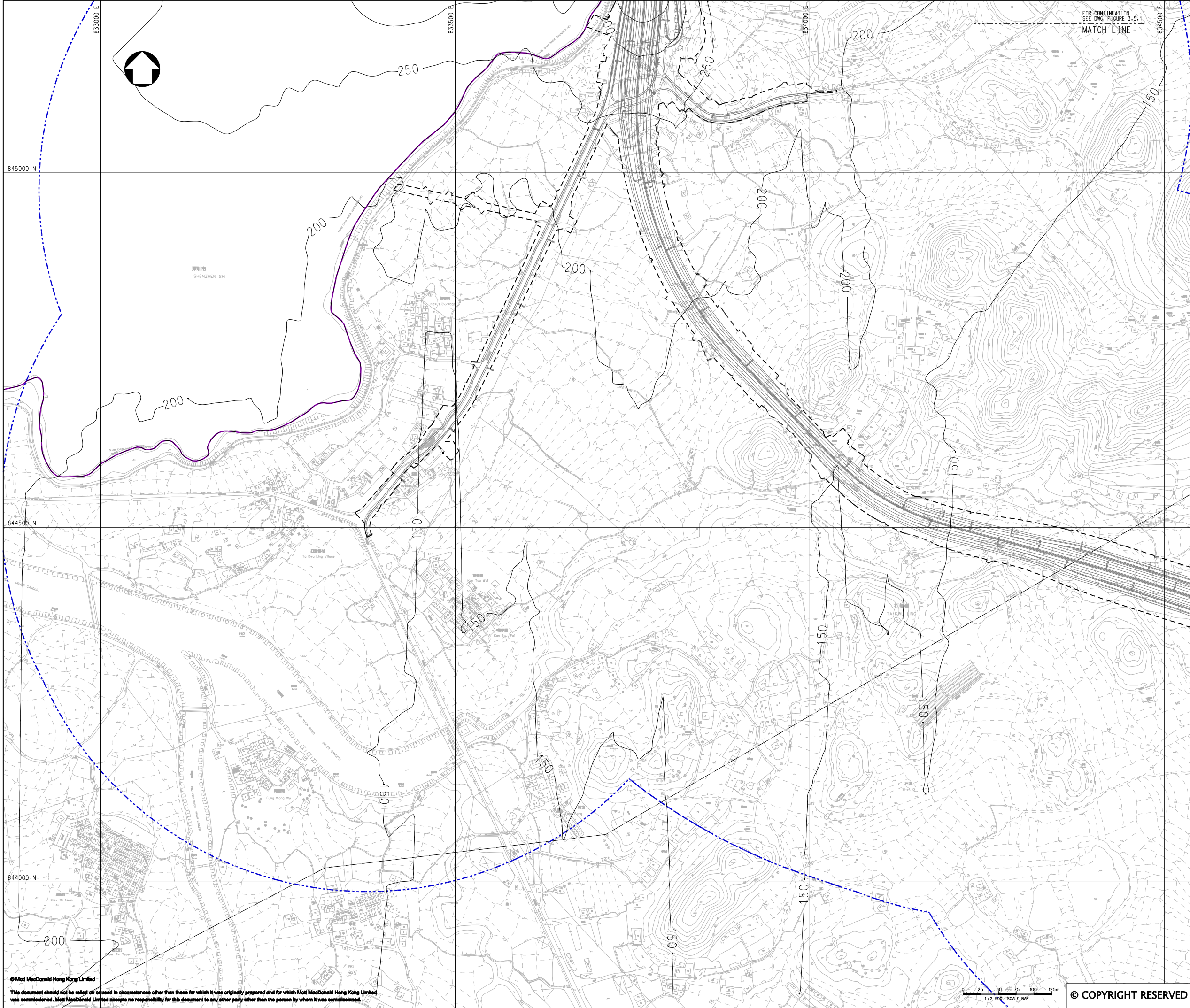
AGREEMENT NO. CE45/2008(CE)
LIANTANG/HEUNG YUEN WAI BOUNDARY
CONTROL POINT AND ASSOCIATED WORKS

Title

CUMULATIVE RESULT - CONTOUR OF TIER 2
HOURLY TSP CONCENTRATION ($\mu\text{g}/\text{m}^3$) AT 1.5m
ABOVE GROUND DURING CONSTRUCTION PHASE
(MITIGATED) FOR TYHP & TYH

(SHEET 1 OF 2)

Designed	HC	Eng.Chk.	EC
Drawn	MING	Coordination	EC
Dwg.Chk.	HC	Approved	HT
Scale at A1	Project	255228	Status
1:2500	CAD File	jc255228\REPORT\ENV\ENV\FIG 3-5.1.dgn	PRE
Drawing No	FIGURE 3.5.1	Rev	P3



KEY PLAN
SCALE 1:100000

- LEGEND:
- BOUNDARY OF HKSAR
 - 500m ASSESSMENT AREA
 - TENTATIVE WORKS AREA
 - AIR SENSITIVE RECEIVERS COMPLIED WITH AAO CRITERIA.
 - AIR SENSITIVE RECEIVERS EXCEEDED AAO CRITERIA.

P1	OCT 10	MMH	FIRST ISSUE	HC	HT
Rev	Date	Drawn	Description	Ch'k'd	App'd



20/F Two Landmark East
100 How Ming Street
Kowloon, Kowloon
Hong Kong
T +852 2828 6787
F +852 2827 1823
W www.mottmac.com.hk

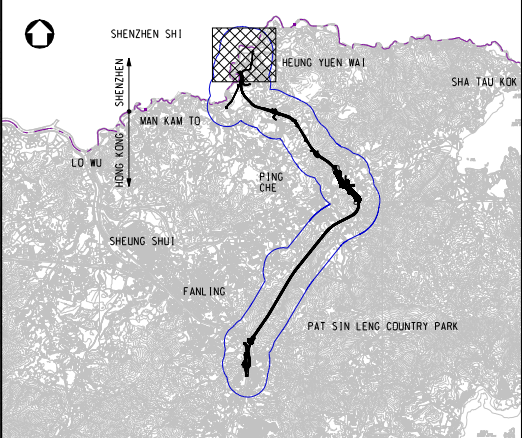
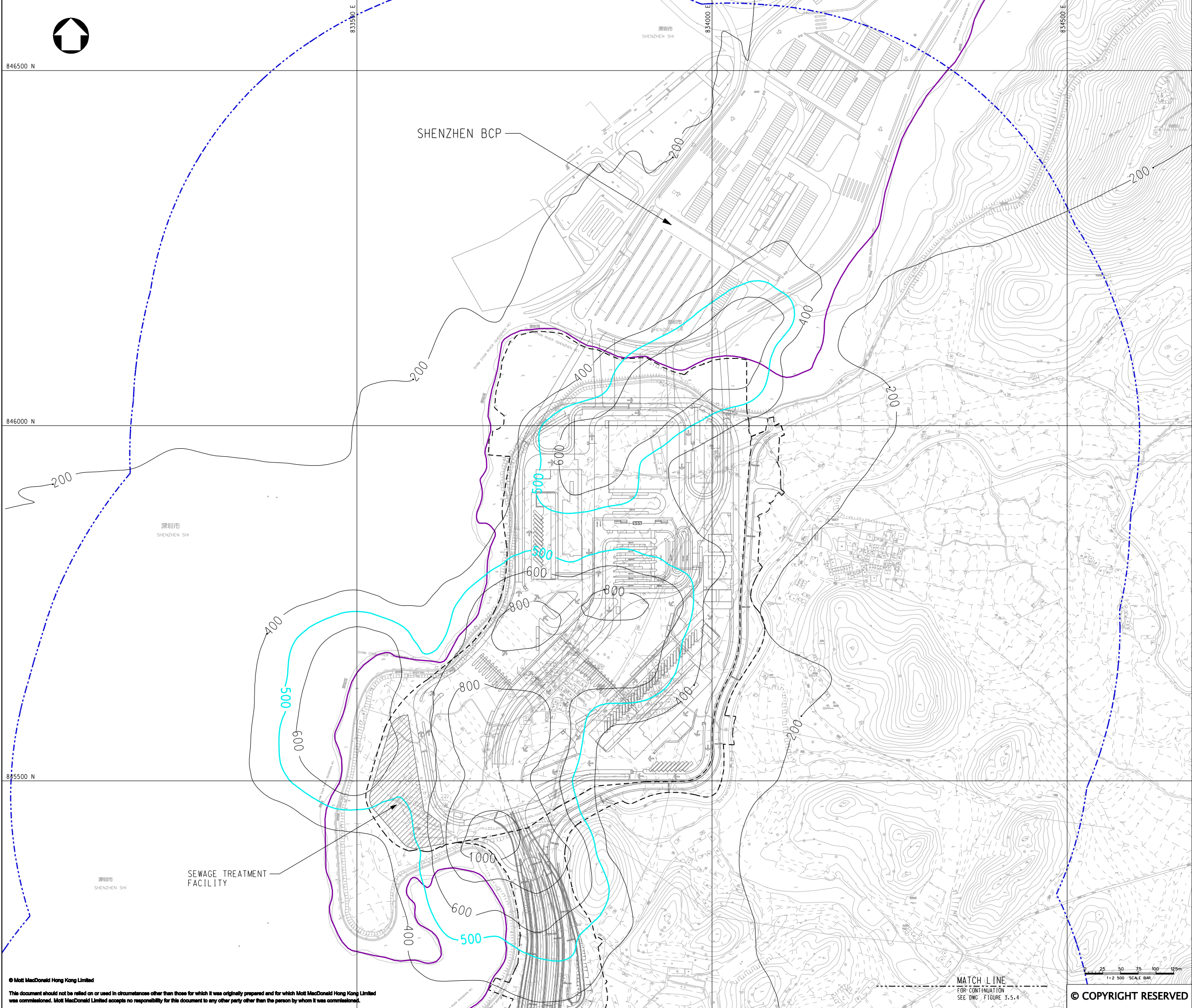
Client

**CIVIL ENGINEERING
AND DEVELOPMENT
DEPARTMENT**

Project
AGREEMENT NO. CE45/2008(CE)
LIANTANG/HEUNG YUEN WAI BOUNDARY
CONTROL POINT AND ASSOCIATED WORKS

Title
CUMULATIVE RESULT - CONTOUR OF TIER 2
HOURLY TSP CONCENTRATION ($\mu\text{g}/\text{m}^3$) AT 1.5m
ABOVE GROUND DURING CONSTRUCTION PHASE
(MITIGATED) FOR TYHP & TYH
(SHEET 2 OF 2)

Designed	HC	Eng.Cht.	EC
Drawn	MING	Coordination	EC
Dwg.Cht.	HC	Approved	HT
Scale at A1 1:2500	Project 255228	Status PRE	
Drawing No	FIGURE 3.5.2	Rev P1	



KEY PLAN
SCALE 1:100000

LEGEND:

- BOUNDARY OF HK SAR
- 500m ASSESSMENT AREA
- TENTATIVE WORKS AREA
- AOO CRITERIA
- AIR SENSITIVE RECEIVERS COMPLIED WITH AOO CRITERIA.
- AIR SENSITIVE RECEIVERS EXCEEDED AOO CRITERIA.

P3	NOV 10	MMH	FINAL ISSUE	HC	HT
P2	SEP 10	MMH	GENERAL REVISION	HC	HT
P1	AUG 10	MING	FIRST ISSUE	HC	HT
Rev	Date	Drawn	Description	Ch'k'd	App'd

Mott MacDonald

20/F Two Landmark East
100 How Ming Street
Kowloon, Kowloon
Hong Kong
T +852 2828 6787
F +852 2827 1823
W www.mottmac.com.hk

Client

CEDD

**CIVIL ENGINEERING
AND DEVELOPMENT
DEPARTMENT**

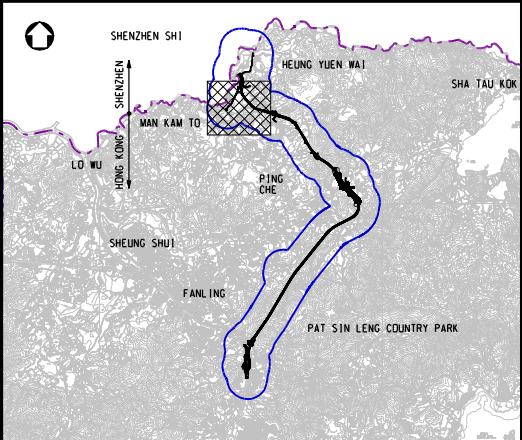
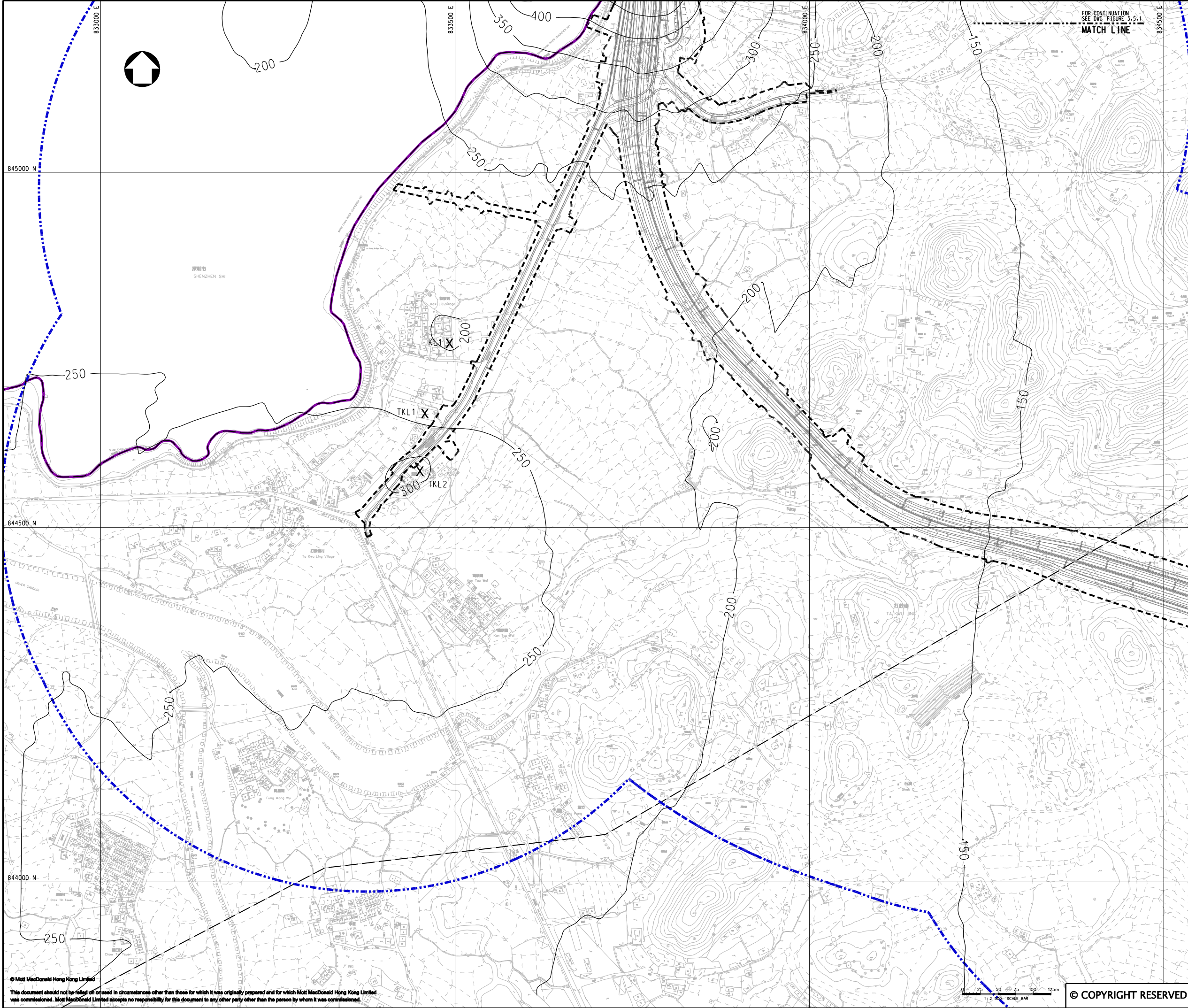
Project

AGREEMENT NO. CE45/2008(CE)
LIANTANG/HEUNG YUEN WAI BOUNDARY
CONTROL POINT AND ASSOCIATED WORKS

Title

CUMULATIVE RESULT - CONTOUR OF TIER 2
HOURLY TSP CONCENTRATION ($\mu\text{g}/\text{m}^3$) AT 1.5m
ABOVE GROUND DURING CONSTRUCTION PHASE
(MITIGATED) FOR KL1, TKL1 & TKL2
(SHEET 1 OF 2)

Designed	HC	Eng.Chk.	EC
Drawn	MING	Coordination	EC
Dwg.Chk.	HC	Approved	HT
Scale at A1	Project	255228	Status
1:2500	CAD File	jc255228\REPORT\ENV\EA\10105\FIG 3-5.3.dgn	PRE
Drawing No	FIGURE 3.5.3	Rev	P3



KEY PLAN
SCALE 1:100000

- LEGEND:
- BOUNDARY OF HKSAR
 - 500m ASSESSMENT AREA
 - TENTATIVE WORKS AREA
 - X AIR SENSITIVE RECEIVERS COMPLIED WITH AAO CRITERIA.

P1	OCT 10	MING	FIRST ISSUE	HC	HT
Rev	Date	Drawn	Description	Ch'k'd	App'd



20/F Two Landmark East
100 How Ming Street
Kowloon, Kowloon
Hong Kong
T +852 2828 6787
F +852 2827 1823
W www.mottmac.com.hk

Client

 **CIVIL ENGINEERING
AND DEVELOPMENT
DEPARTMENT**

Project

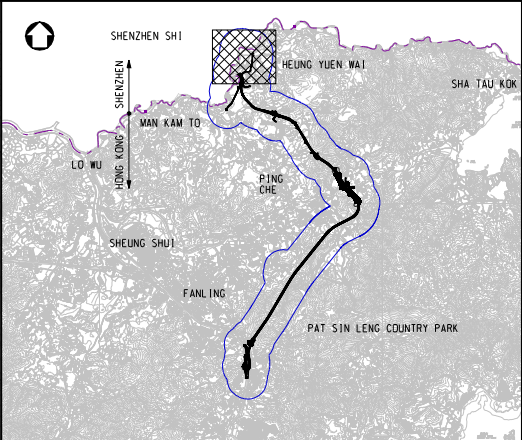
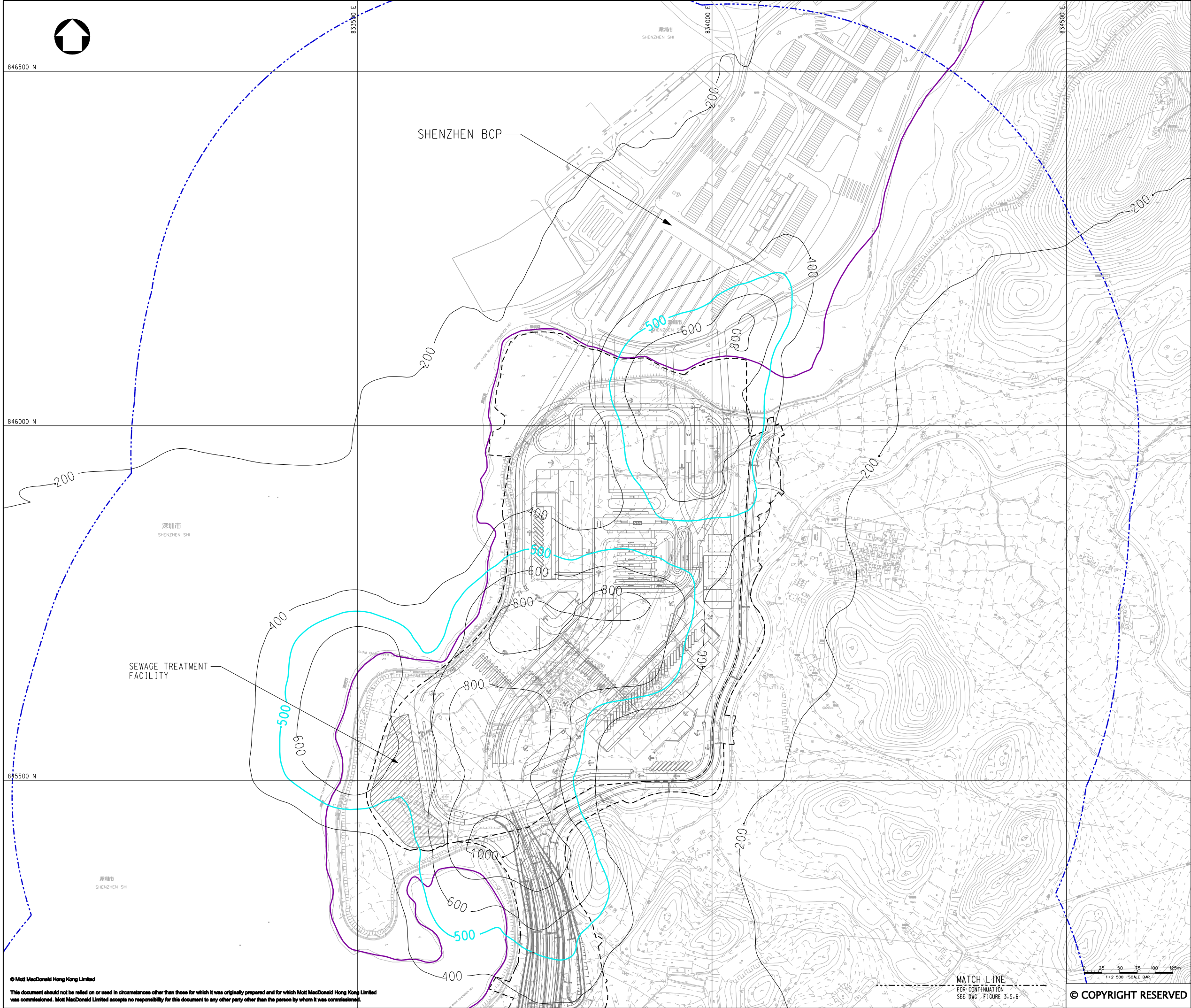
AGREEMENT NO. CE45/2008(CE)
LIANTANG/HEUNG YUEN WAI BOUNDARY
CONTROL POINT AND ASSOCIATED WORKS

Title

CUMULATIVE RESULT - CONTOUR OF TIER 2
HOURLY TSP CONCENTRATION ($\mu\text{g}/\text{m}^3$) AT 1.5m
ABOVE GROUND DURING CONSTRUCTION PHASE
(MITIGATED) FOR KL1, TKL1 & TKL2
(SHEET 2 OF 2)

Designed	HC	Eng.Chk.	EC	
Drawn	MING	Coordination	EC	
Dwg.Chk.	HC	Approved	HT	
Scale at A1	1:2500	Project	255228	Status
		CAD file	J:\255228\report\env\elo\005\FIG 3-5.4.dgn	PRE
Drawing No				Rev
				P1

FIGURE 3.5.4



KEY PLAN
SCALE 1:100000

- LEGEND:
- BOUNDARY OF HK SAR
 - 500m ASSESSMENT AREA
 - TENTATIVE WORKS AREA
 - AQO CRITERIA
 - X AIR SENSITIVE RECEIVERS COMPLIED WITH AQO CRITERIA.
 - X AIR SENSITIVE RECEIVERS EXCEEDED AQO CRITERIA.

P3	NOV 10	MMH	FINAL ISSUE	HC	HT
P2	SEP 10	MMH	GENERAL REVISION	HC	HT
P1	AUG 10	MMH	FIRST ISSUE	HC	HT
Rev	Date	Drawn	Description	Ch'k'd	App'd



20/F Two Landmark East
100 How Ming Street
Kowloon, Kowloon
Hong Kong
T +852 2828 6787
F +852 2827 1823
W www.mottmac.com.hk

Client

**CIVIL ENGINEERING
AND DEVELOPMENT
DEPARTMENT**

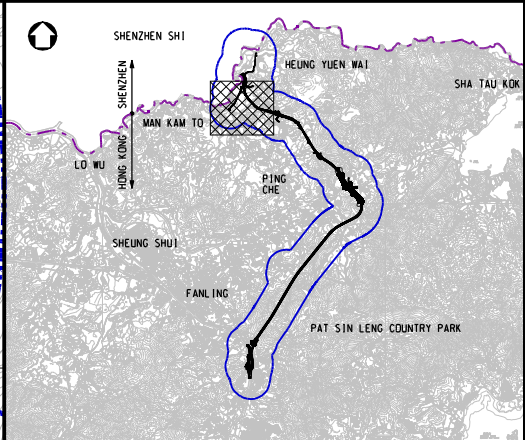
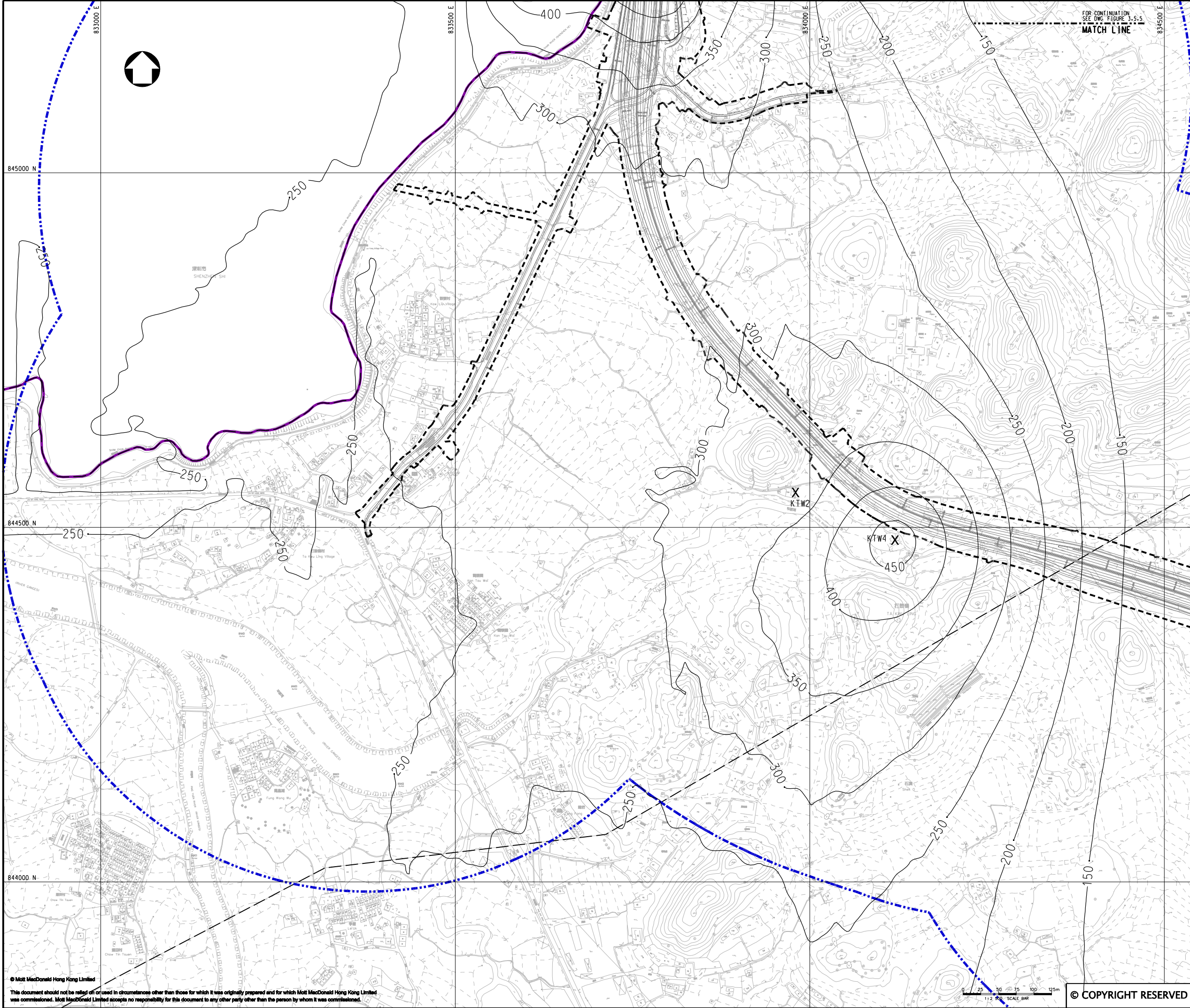
Project
AGREEMENT NO. CE45/2008(CE)
LIANTANG/HEUNG YUEN WAI BOUNDARY
CONTROL POINT AND ASSOCIATED WORKS

Title
CUMULATIVE RESULT - CONTOUR OF TIER 2
HOURLY TSP CONCENTRATION ($\mu\text{g}/\text{m}^3$) AT 1.5m
ABOVE GROUND DURING CONSTRUCTION PHASE
(MITIGATED) FOR KTW2 & KTW4
(SHEET 1 OF 2)

Designed	HC	Eng.Chk.	EC
Drawn	MING	Coordination	EC
Dwg.Chk.	HC	Approved	HT
Scale at A1	Project	255228	Status
1:2500	CAD File	jc255228\REPORT\ENV\ENV\10105\FIG 3-5.5.dgn	PRE
Drawing No	FIGURE 3.5.5	Rev	P3

MATCH LINE
FOR CONTINUATION
SEE DWG. FIGURE 3.5.6

© COPYRIGHT RESERVED



KEY PLAN
SCALE 1:100000

LEGEND:

- BOUNDARY OF HKSAR
- 500m ASSESSMENT AREA
- TENTATIVE WORKS AREA
- AIR SENSITIVE RECEIVERS COMPLIED WITH ADO CRITERIA.

P1	OCT 10	MING	FIRST ISSUE	HC	HT
Rev	Date	Drawn	Description	Ch'k'd	App'd

Mott MacDonald

20/F Two Landmark East
100 How Ming Street
Kowloon, Kowloon
Hong Kong
T +852 2828 6787
F +852 2827 1823
W www.mottmac.com.hk

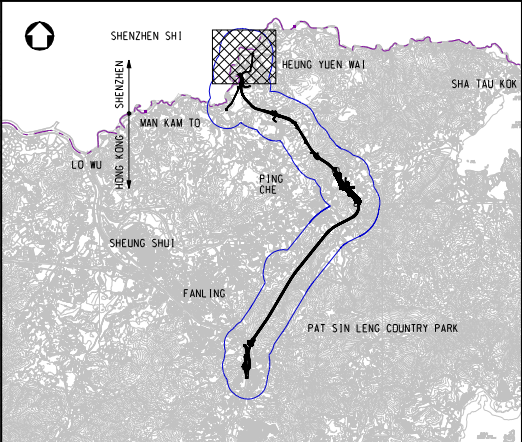
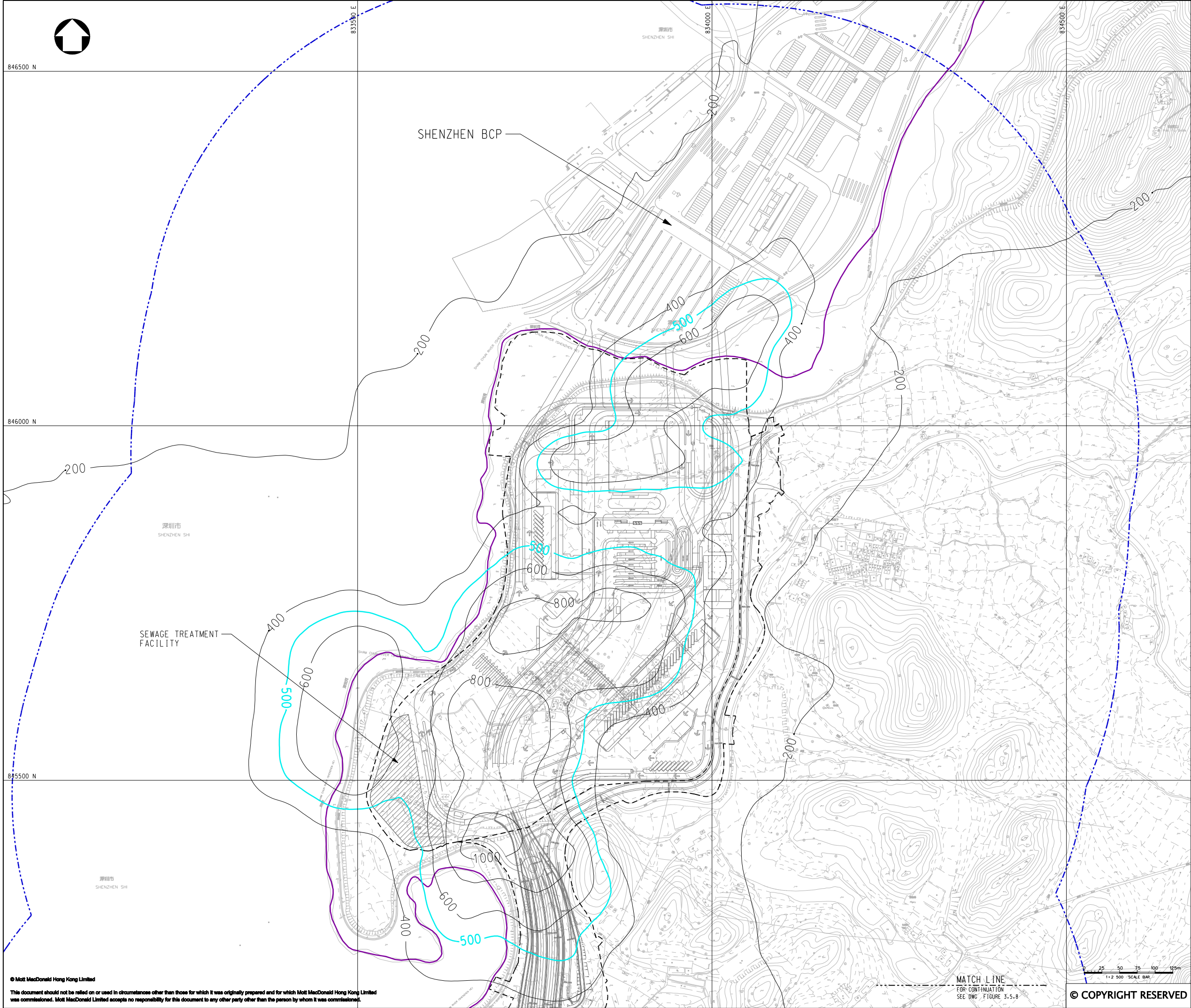
CEDD

**CIVIL ENGINEERING
AND DEVELOPMENT
DEPARTMENT**

Project
AGREEMENT NO. CE45/2008(CE)
LIANTANG/HEUNG YUEN WAI BOUNDARY
CONTROL POINT AND ASSOCIATED WORKS

Title
CUMULATIVE RESULT - CONTOUR OF TIER 2
HOURLY TSP CONCENTRATION ($\mu\text{g}/\text{m}^3$) AT 1.5m
ABOVE GROUND DURING CONSTRUCTION PHASE
(MITIGATED) FOR KTW2 & KTW4
(SHEET 2 OF 2)

Designed	HC	Eng.Chk.	EC
Drawn	MING	Coordination	EC
Dwg.Chk.	HC	Approved	HT
Scale at A1	Project	255228	Status
1:2500	CAD file	ju255228\report\env\elo\005\FIG 3-5.6.dgn	PRE
Drawing No	FIGURE 3.5.6	Rev	P1



KEY PLAN
SCALE 1:100000

- LEGEND:
- BOUNDARY OF HKSAR
 - 500m ASSESSMENT AREA
 - TENTATIVE WORKS AREA
 - AQO CRITERIA
 - X AIR SENSITIVE RECEIVERS COMPLIED WITH AQO CRITERIA.
 - X AIR SENSITIVE RECEIVERS EXCEEDED AQO CRITERIA.

P3	NOV 10	MMH	FINAL ISSUE	HC	HT
P2	SEP 10	MMH	GENERAL REVISION	HC	HT
P1	AUG 10	MING	FIRST ISSUE	HC	HT
Rev	Date	Drawn	Description	Ch'k'd	App'd



20/F Two Landmark East
100 How Ming Street
Kowloon, Kowloon
Hong Kong
T +852 2828 6787
F +852 2827 1823
W www.mottmac.com.hk

Client

**CIVIL ENGINEERING
AND DEVELOPMENT
DEPARTMENT**

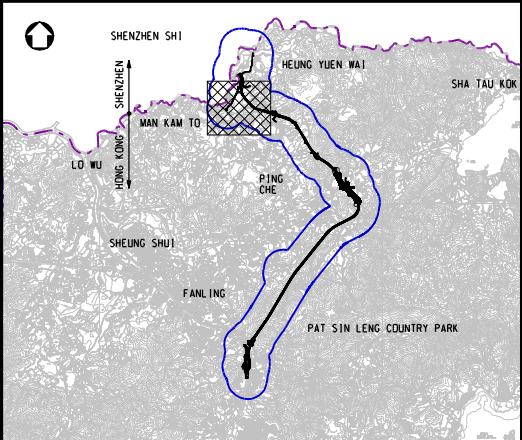
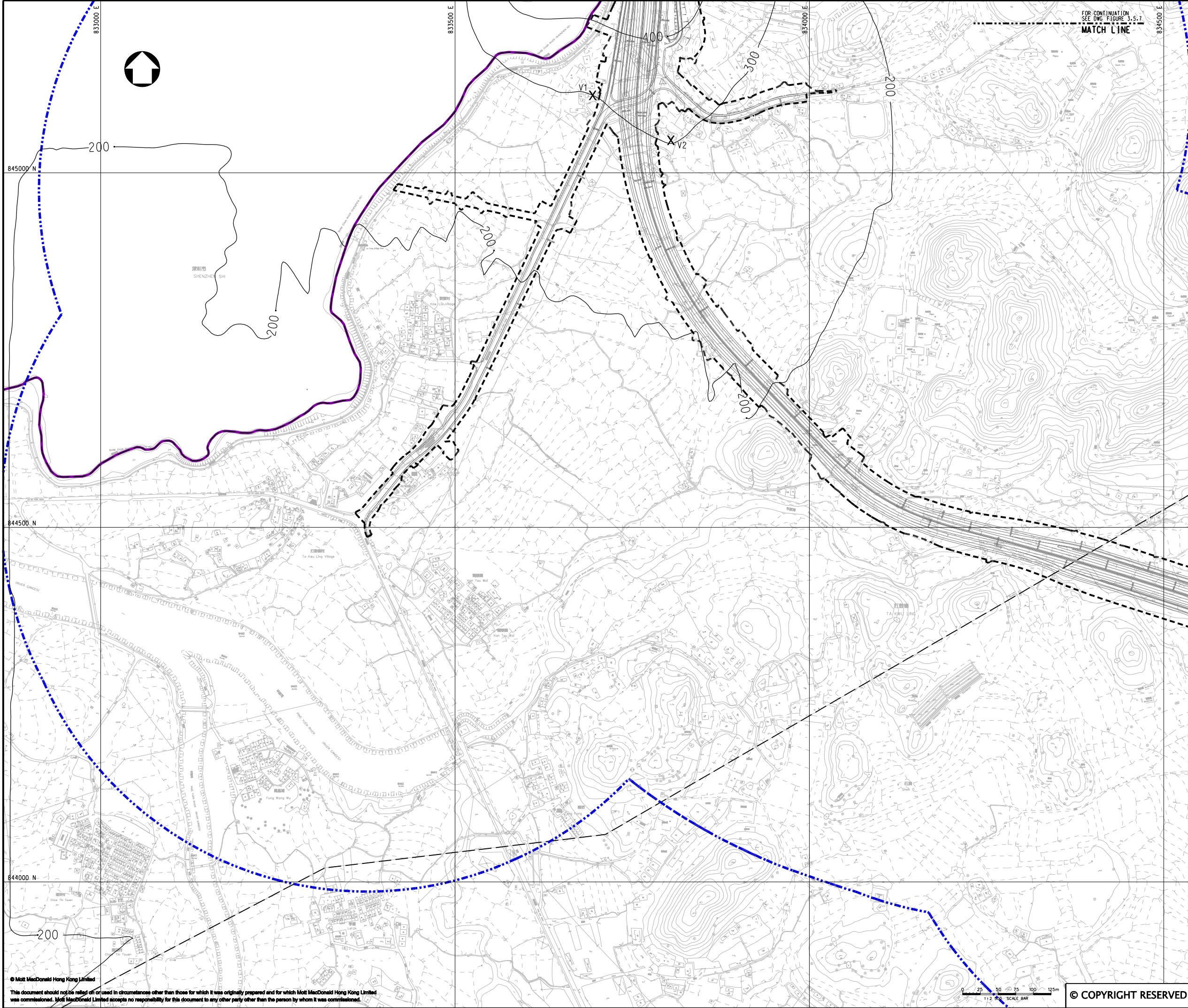
Project
AGREEMENT NO. CE45/2008(CE)
LIANTANG/HEUNG YUEN WAI BOUNDARY
CONTROL POINT AND ASSOCIATED WORKS

Title
CUMULATIVE RESULT - CONTOUR OF TIER 2
HOURLY TSP CONCENTRATION ($\mu\text{g}/\text{m}^3$) AT 1.5m
ABOVE GROUND DURING CONSTRUCTION PHASE
(MITIGATED) FOR V1 AND V2
(SHEET 1 OF 2)

Designed	HC	Eng.Chk.	EC
Drawn	MING	Coordination	EC
Dwg.Chk.	HC	Approved	HT
Scale at A1	Project	255228	Status
1:2500	CAD File	jc255228\REPORT\ENV\ENV\10105\FIG 3-5.7.dgn	PRE
Drawing No	FIGURE 3.5.7	Rev	P3

MATCH LINE
FOR CONTINUATION
SEE DWG. FIGURE 3.5.8

© COPYRIGHT RESERVED



KEY PLAN
SCALE 1:100000

- LEGEND:
- BOUNDARY OF HKSAR
 - 500m ASSESSMENT AREA
 - TENTATIVE WORKS AREA
 - X AIR SENSITIVE RECEIVERS COMPLIED WITH ADO CRITERIA.

P2	OCT 10	MING	GENERAL REVISION	DC	HT
P1	AUG 10	MING	FIRST ISSUE	HC	HT
Rev	Date	Drawn	Description	Ch'k'd	App'd



20/F Two Landmark East
100 How Ming Street
Kowloon, Kowloon
Hong Kong
T +852 2828 6787
F +852 2827 1823
W www.mottmac.com.hk

Client

 **CIVIL ENGINEERING
AND DEVELOPMENT
DEPARTMENT**

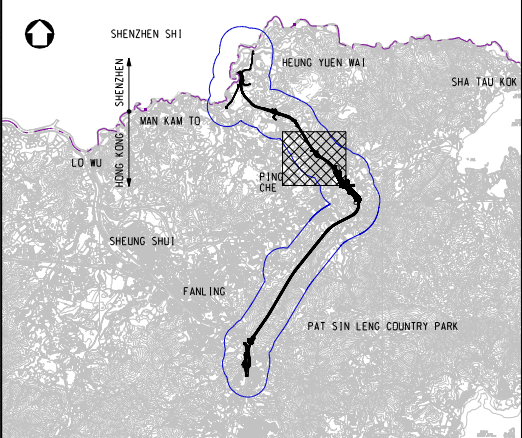
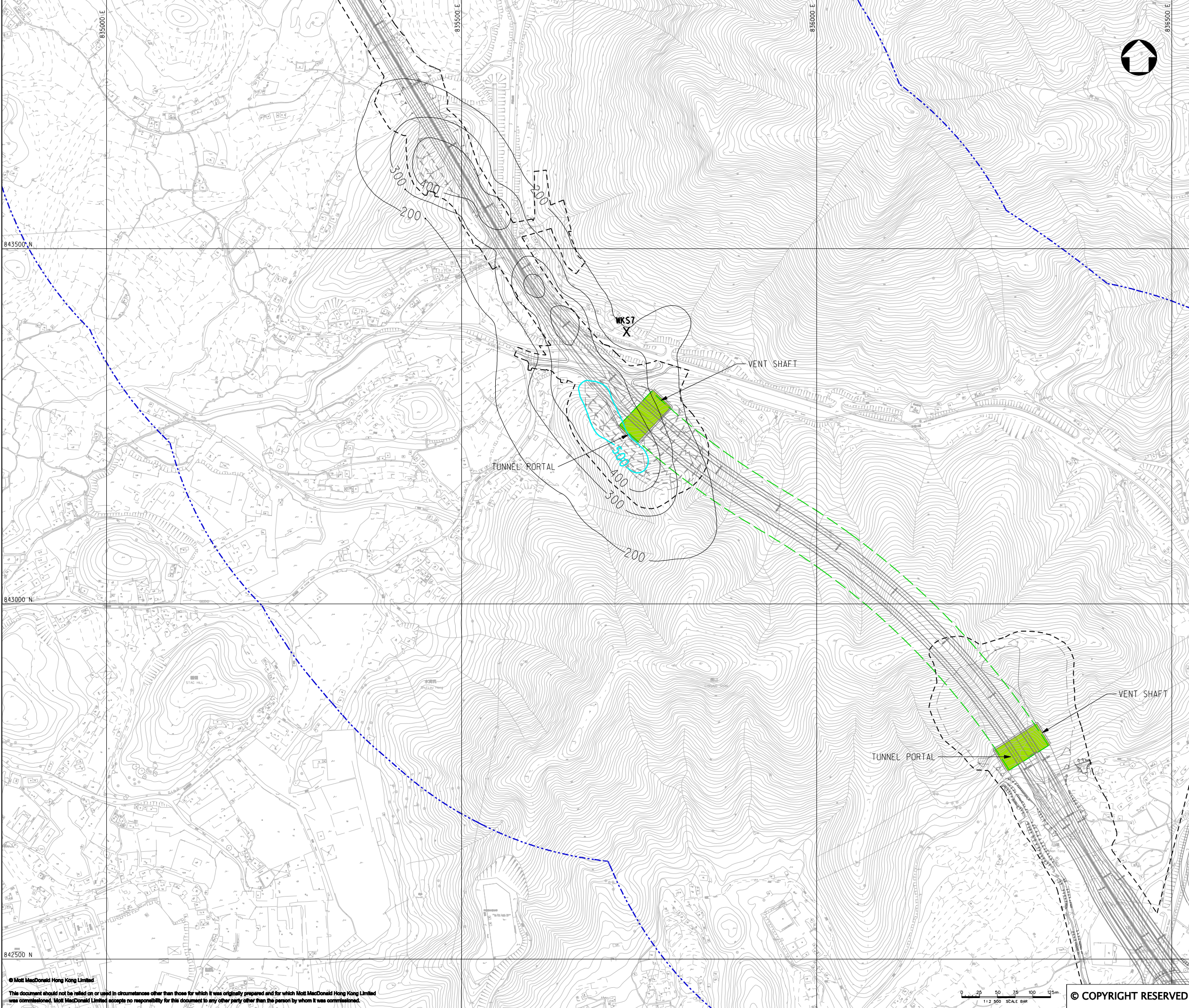
Project

AGREEMENT NO. CE45/2008(CE)
LIANTANG/HEUNG YUEN WAI BOUNDARY
CONTROL POINT AND ASSOCIATED WORKS

Title

CUMULATIVE RESULT - CONTOUR OF TIER 2
HOURLY TSP CONCENTRATION ($\mu\text{g}/\text{m}^3$) AT 1.5m
ABOVE GROUND DURING CONSTRUCTION PHASE
(MITIGATED) FOR V1 AND V2
(SHEET 2 OF 2)

Designed	HC	Eng.Chk.	EC
Drawn	MING	Coordination	EC
Dwg.Chk.	HC	Approved	HT
Scale at A1	Project	255228	Status
1:2500	CAD file	J:\255228\report\env\elo\05\FIG 3-5.8.dgn	PRE
Drawing No	FIGURE 3.5.8	Rev	P2



KEY PLAN
SCALE 1:100000

- LEGEND:
- 500m ASSESSMENT AREA
 - TENTATIVE WORKS AREA
 - TUNNEL SECTION
 - AAO CRITERIA
 - PROPOSED TUNNEL VENTILATION BUILDING
 - AIR SENSITIVE RECEIVERS COMPLIED WITH AAO CRITERIA.
 - AIR SENSITIVE RECEIVERS EXCEEDED AAO CRITERIA.

P2	NOV 10	MMH	FINAL ISSUE	HC	HT
P1	AUG 10	MMH	FIRST ISSUE	HC	HT
Rev	Date	Drawn	Description	Ch'k'd	App'd



20/F Two Landmark East
100 How Ming Street
Kowloon, Kowloon
Hong Kong
T +852 2828 6787
F +852 2827 1823
W www.mottmac.com.hk

Client

 **CIVIL ENGINEERING
AND DEVELOPMENT
DEPARTMENT**

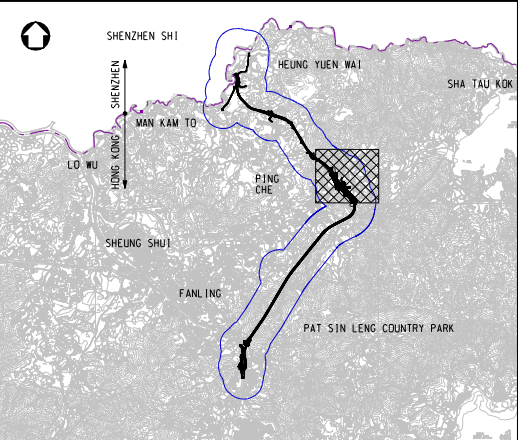
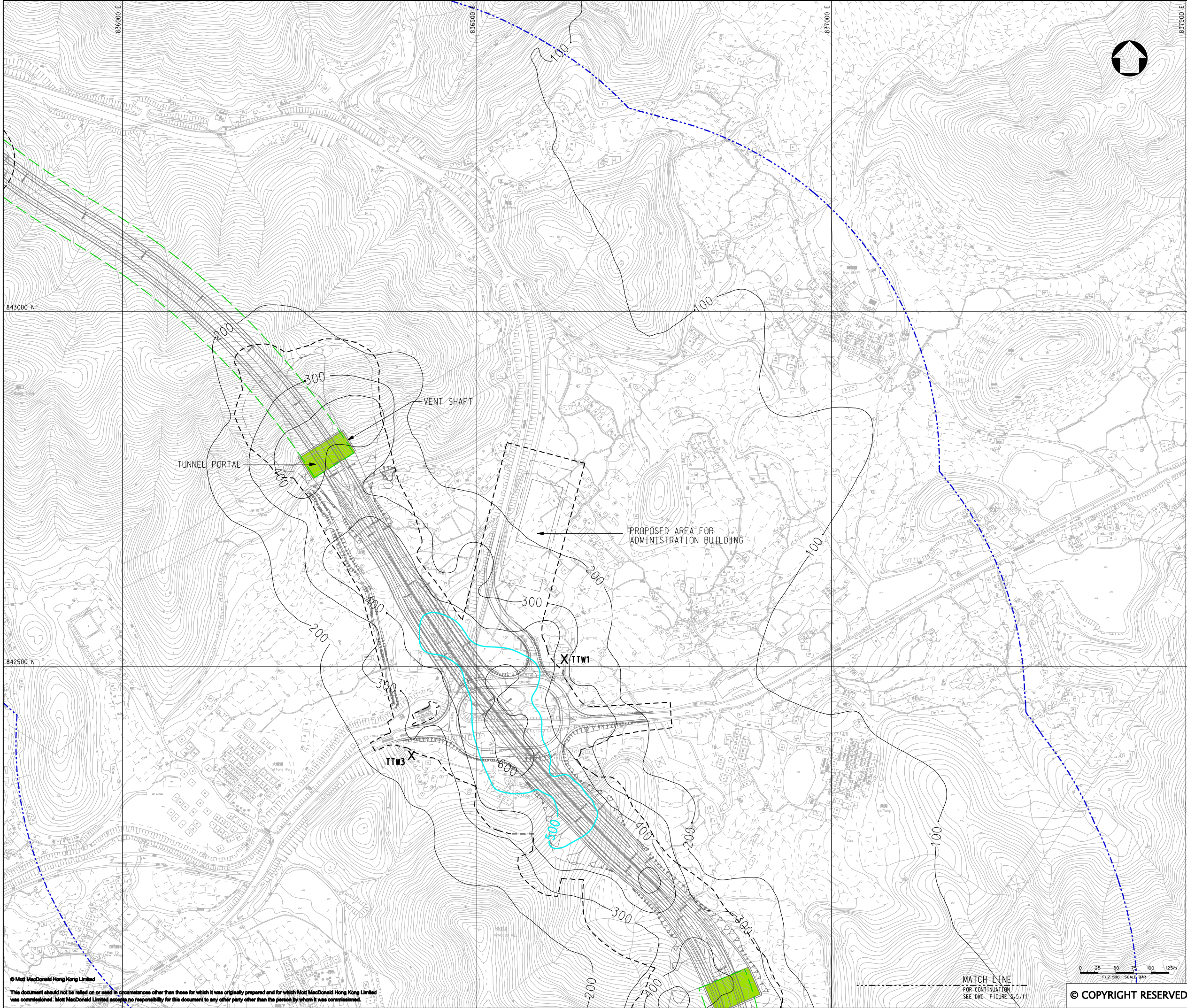
Project

AGREEMENT NO. CE45/2008(CE)
LIANTANG/HEUNG YUEN WAI BOUNDARY
CONTROL POINT AND ASSOCIATED WORKS

Title

CUMULATIVE RESULT - CONTOUR OF TIER 2
HOURLY TSP CONCENTRATION ($\mu\text{g}/\text{m}^3$) AT 1.5m
ABOVE GROUND DURING CONSTRUCTION PHASE
(MITIGATED) FOR WKST (SHEET 1 OF 1)

Designed	HC	Eng.Chk.	EC
Drawn	MING	Coordination	EC
Dwg.Chk.	HC	Approved	HT
Scale at A1	Project	Status	
1:2500	255228	PRE	
Drawing No	CAD File	Rev	
	J:\255228\REPORT\ENV\ENV\A1\0105\FIG 3-5.9.dgn	P2	



KEY PLAN
SCALE 1:100000

LEGEND:

- 500m ASSESSMENT AREA
- TENTATIVE WORKS AREA
- TUNNEL SECTION
- AQO CRITERIA
- PROPOSED TUNNEL VENTILATION BUILDING
- X AIR SENSITIVE RECEIVERS COMPLIED WITH AQO CRITERIA.
- X AIR SENSITIVE RECEIVERS EXCEEDED AQO CRITERIA.

P2	NOV 10	MMH	FINAL ISSUE	HC	HT
P1	OCT 10	MMH	FIRST ISSUE	HC	HT
Rev	Date	Drawn	Description	Ch'k'd	App'd

Mott MacDonald

20/F Two Landmark East
100 How Ming Street
Kowloon, Kowloon
Hong Kong
T +852 2828 6787
F +852 2827 1823
W www.mottmac.com.hk

Client

CEDD

**CIVIL ENGINEERING
AND DEVELOPMENT
DEPARTMENT**

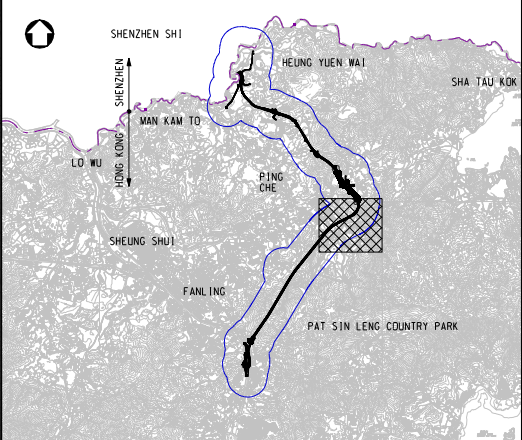
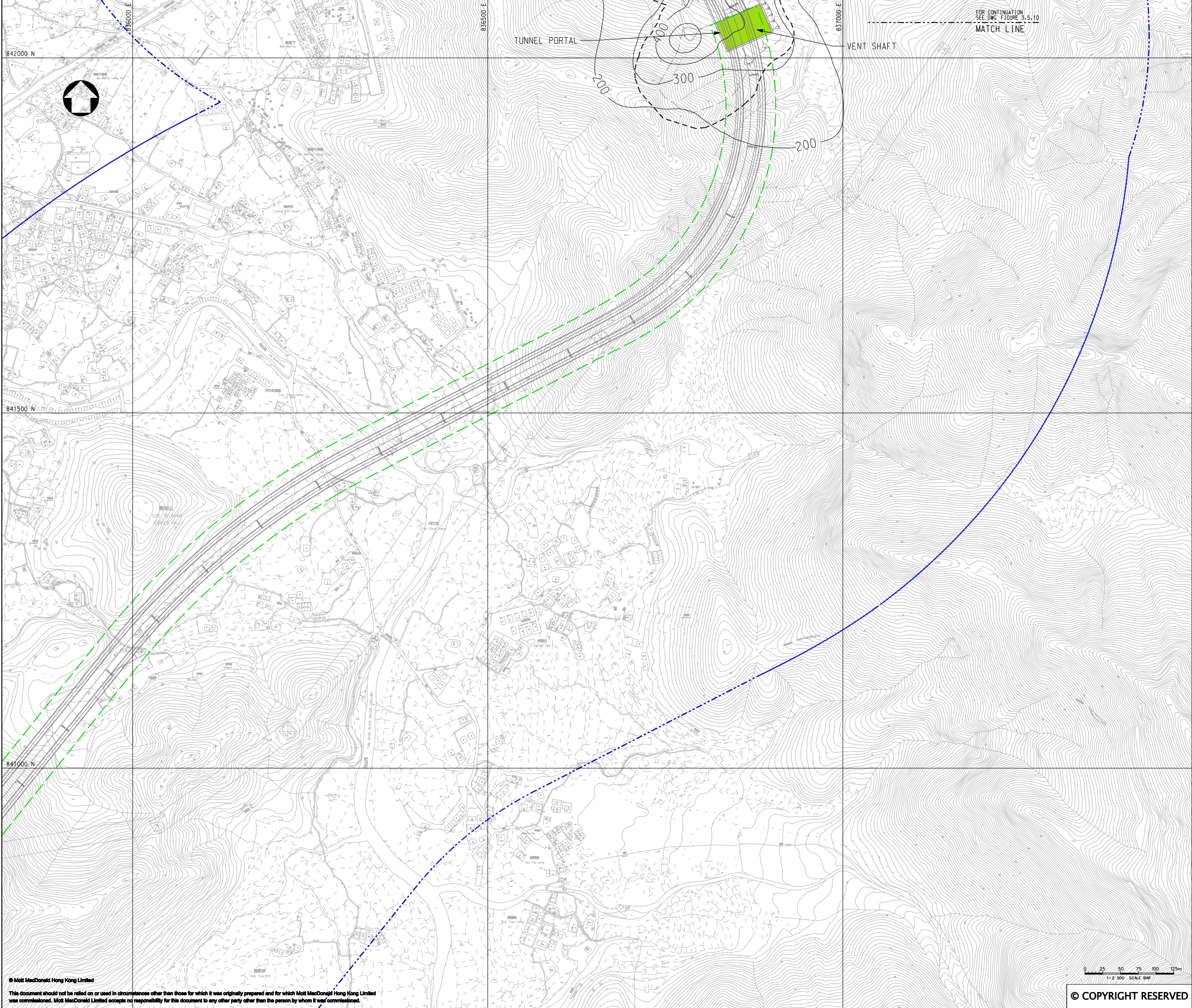
Project

AGREEMENT NO. CE45/2008(CE)
LIANTANG/HEUNG YUEN WAI BOUNDARY
CONTROL POINT AND ASSOCIATED WORKS

Title

CUMULATIVE RESULT - CONTOUR OF TIER 2
HOURLY TSP CONCENTRATION ($\mu\text{g}/\text{m}^3$) AT 1.5m
ABOVE GROUND DURING CONSTRUCTION PHASE
(MITIGATED) FOR TTW1 & TTW3
(SHEET 1 OF 2)

Designed	HC	Eng.Chk.	EC	
Drawn	MING	Coordination	EC	
Dwg.Chk.	HC	Approved	HT	
Scale at A1	1:2500	Project	255228	Status
		CAD File	JK255228\REPORT\ENV\IAN\0105\FIG 3-5.10.dgn	PRE
Drawing No	FIGURE 3.5.10	Rev	P2	



KEY PLAN
SCALE 1:100000

LEGEND:

- 500m ASSESSMENT AREA
- TENTATIVE WORKS AREA
- TUNNEL SECTION
- PROPOSED TUNNEL VENTILATION BUILDING

P1	OCT 10	MMH	FIRST ISSUE	HC	HT
Rev	Date	Drawn	Description	Ch'k'd	App'd

Mott MacDonald

20/F Two Landmark East
100 How Ming Street
Kowloon
Hong Kong
T +852 2828 6787
F +852 2827 1823
W www.mottmac.com.hk

Client

CEDD

**CIVIL ENGINEERING
AND DEVELOPMENT
DEPARTMENT**

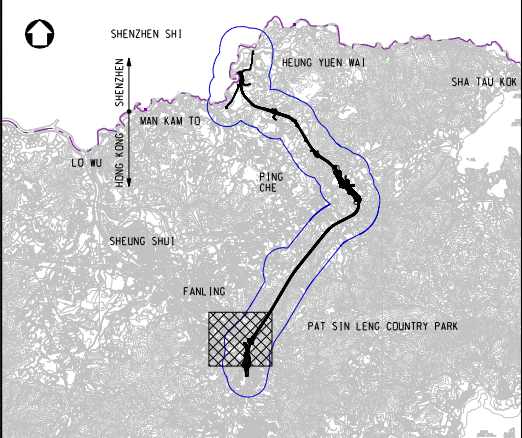
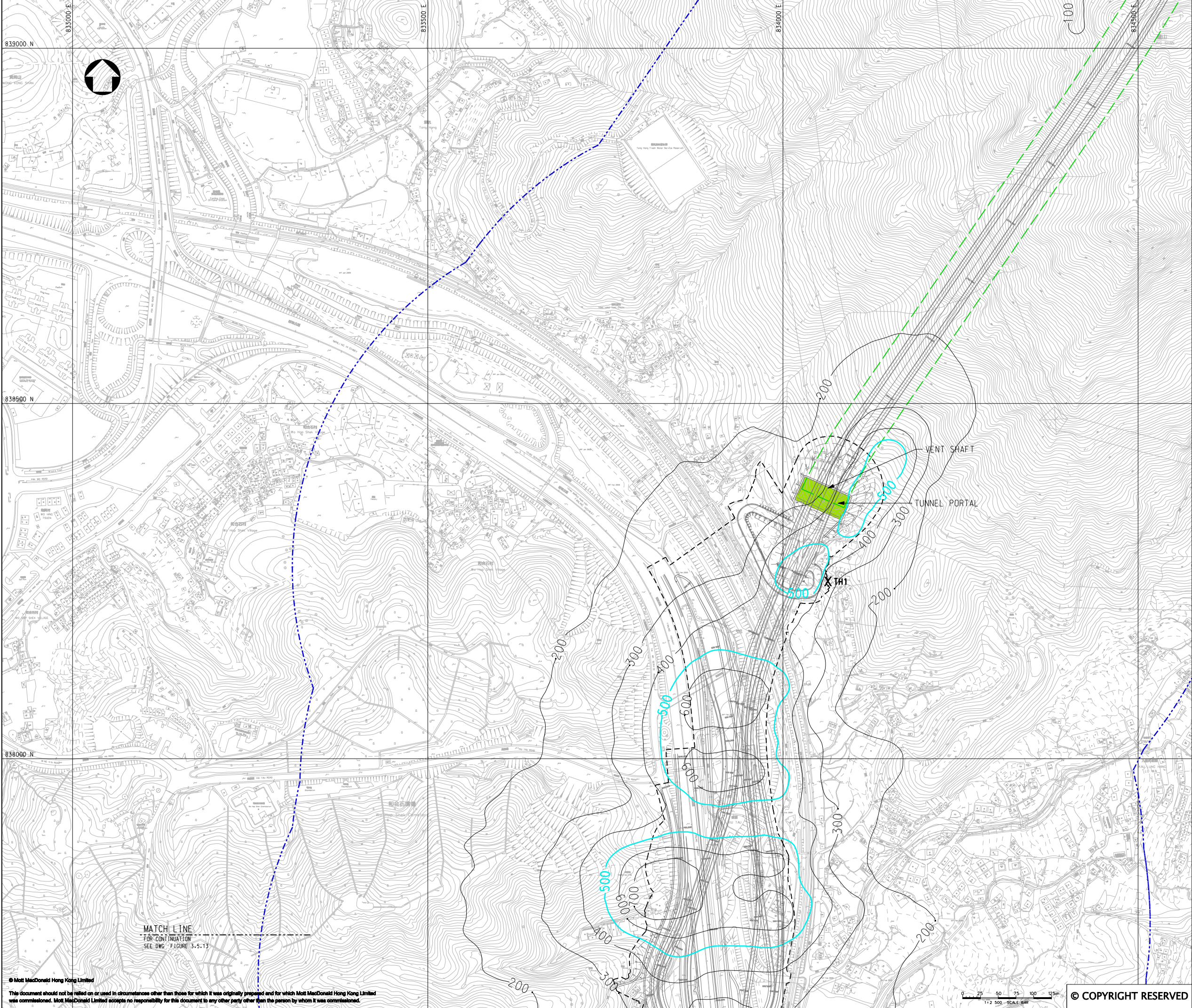
Project

AGREEMENT NO. CE45/2008(CE)
LIANTANG/HEUNG YUEN WAI BOUNDARY
CONTROL POINT AND ASSOCIATED WORKS

Title

CUMULATIVE RESULT - CONTOUR OF TIER 2
HOURLY TSP CONCENTRATION ($\mu\text{g}/\text{m}^3$) AT 1.5m
ABOVE GROUND DURING CONSTRUCTION PHASE
(MITIGATED) FOR TTW1 & TTW3
(SHEET 2 OF 2)

Designed	HC	Eng.Cht.	EC
Drawn	MING	Coordination	EC
Dwg.Cht.	HC	Approved	HT
Scale at A1	Project	255228	Status
1:2500	CAD File	J:\255228\REPORT\ENV\ENV\FIG 3-5.11.dgn	PRE
Drawing No	FIGURE 3.5.11	Rev	P1



KEY PLAN
SCALE 1:100000

LEGEND:

- 500m ASSESSMENT AREA
- TENTATIVE WORKS AREA
- TUNNEL SECTION
- AOO CRITERIA
- PROPOSED TUNNEL VENTILATION BUILDING
- X AIR SENSITIVE RECEIVERS COMPLIED WITH AOO CRITERIA.
- X AIR SENSITIVE RECEIVERS EXCEEDED AOO CRITERIA.

P2	NOV 10	MMH	FINAL ISSUE	HC	HT
P1	OCT 10	MMH	FIRST ISSUE	HC	HT
Rev	Date	Drawn	Description	Ch'k'd	App'd

Mott MacDonald

20/F Two Landmark East
100 How Ming Street
Kowloon Tong, Kowloon
Hong Kong
T +852 2828 6787
F +852 2827 1823
W www.mottmac.com.hk

Client

CEDD

**CIVIL ENGINEERING
AND DEVELOPMENT
DEPARTMENT**

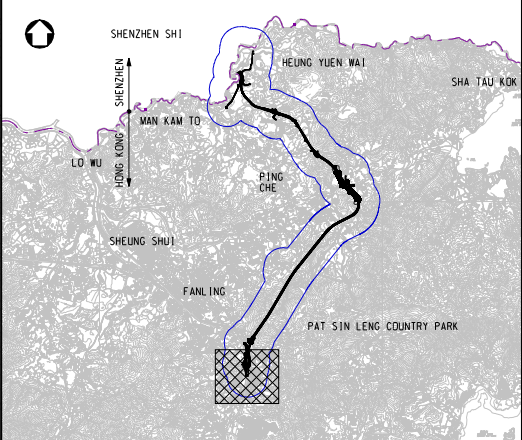
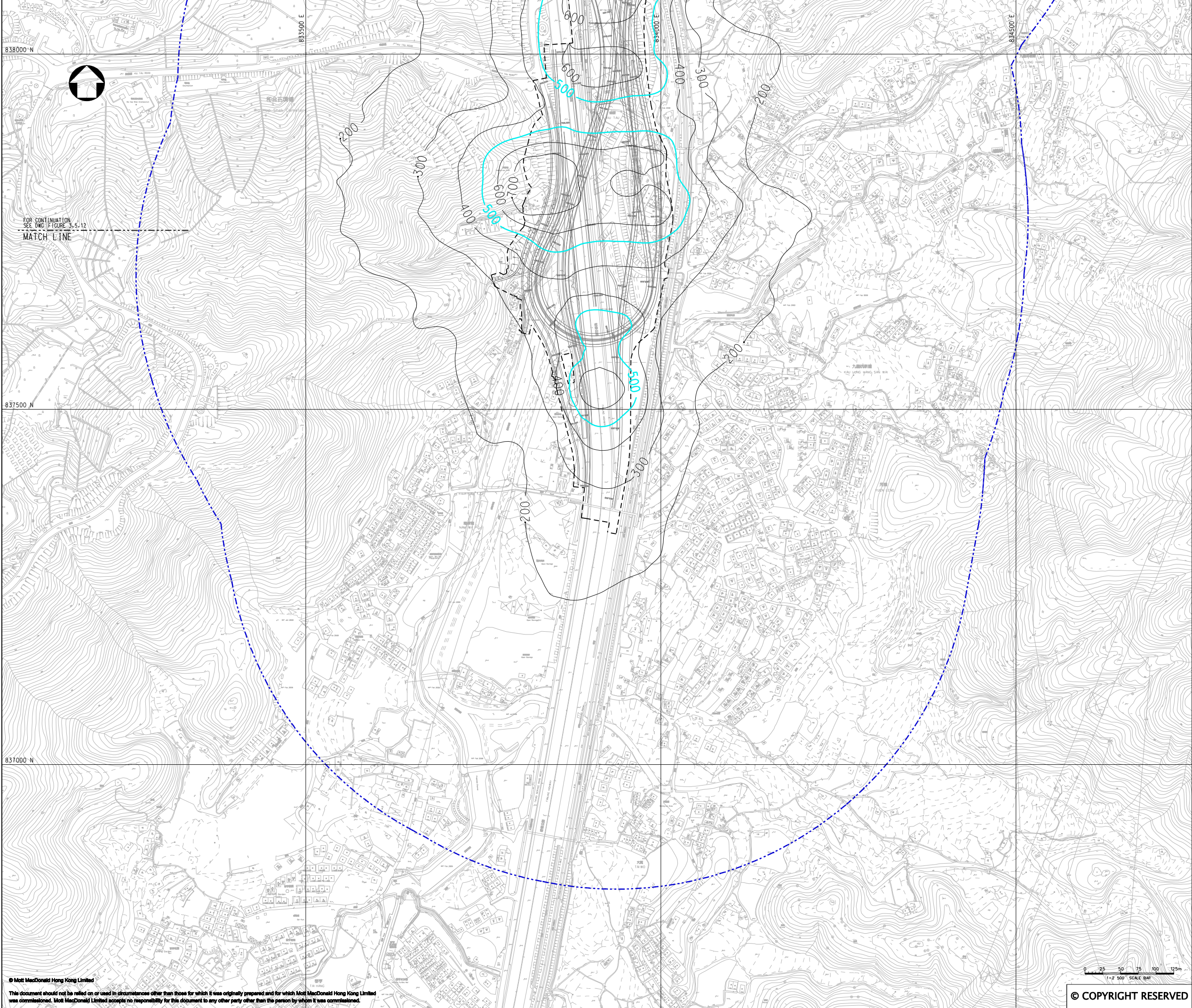
Project

AGREEMENT NO. CE45/2008(CE)
LIANTANG/HEUNG YUEN WAI BOUNDARY
CONTROL POINT AND ASSOCIATED WORKS

Title

CUMULATIVE RESULT - CONTOUR OF TIER 2
HOURLY TSP CONCENTRATION ($\mu\text{g}/\text{m}^3$) AT 1.5m
ABOVE GROUND DURING CONSTRUCTION PHASE
(MITIGATED) FOR TH1 (SHEET 1 OF 2)

Designed	HC	Eng.Chk.	EC
Drawn	MING	Coordination	EC
Dwg.Chk.	HC	Approved	HT
Scale at A1	1:2500	Project	255228
Drawing No	FIGURE 3.5.12	Status	PRE
		Rev	P2



KEY PLAN
SCALE 1:100000

- LEGEND:
- 500m ASSESSMENT AREA
 - TENTATIVE WORKS AREA
 - AQP CRITERIA
 - AIR SENSITIVE RECEIVERS COMPLIED WITH AQP CRITERIA.
 - AIR SENSITIVE RECEIVERS EXCEEDED AQP CRITERIA.

P2	NOV 10	MMH	FINAL ISSUE	HC	HT
P1	OCT 10	MMH	FIRST ISSUE	HC	HT
Rev	Date	Drawn	Description	Ch'k'd	App'd



Mott MacDonald

20/F Two Landmark East
100 How Ming Street
Kowloon, Kowloon
Hong Kong
T +852 2828 6787
F +852 2827 1823
W www.mottmac.com.hk



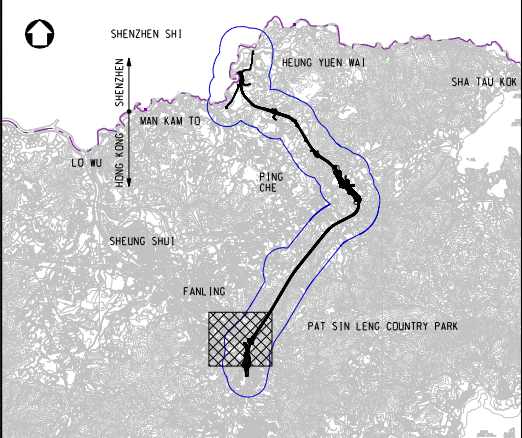
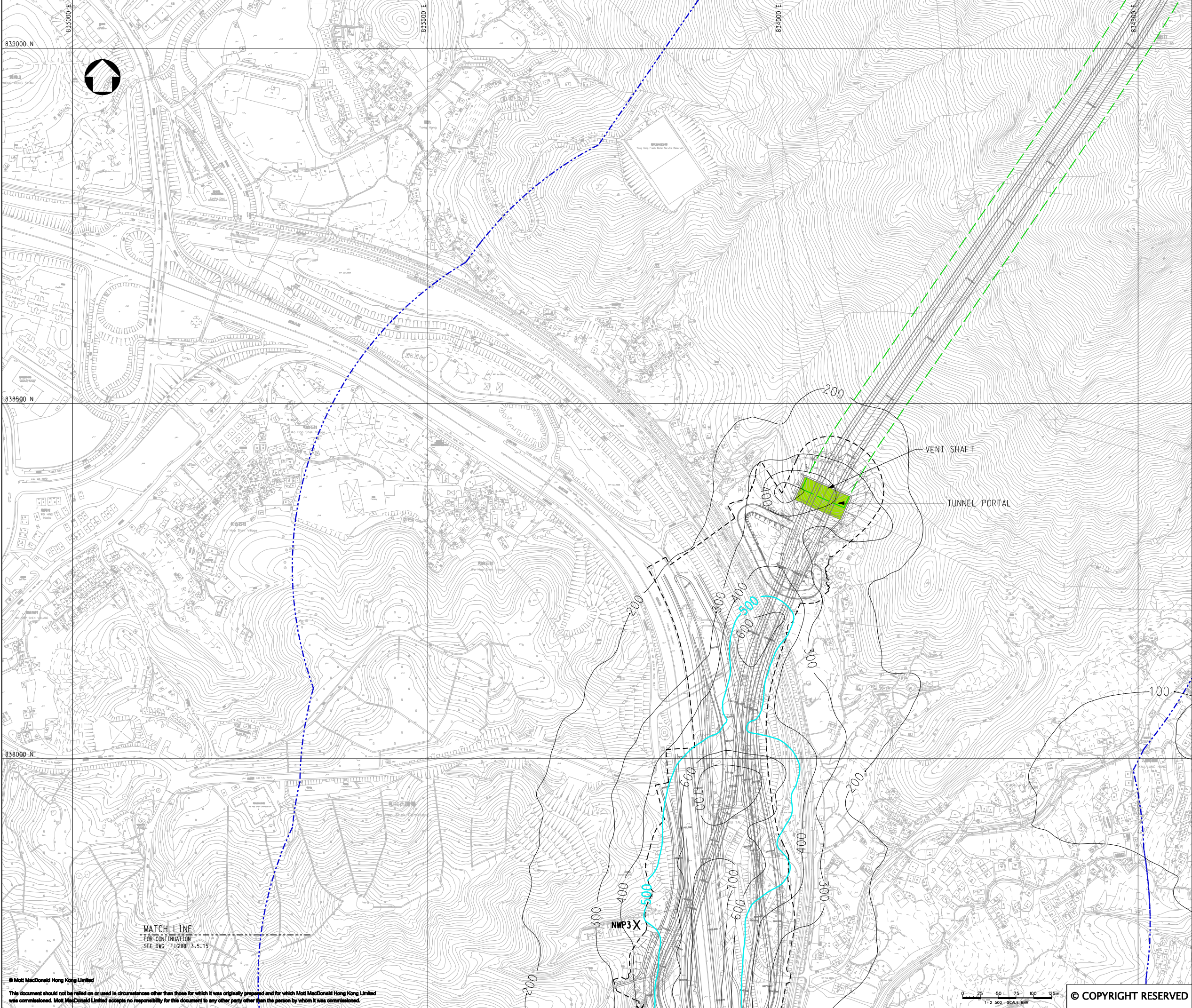
CEDD

**CIVIL ENGINEERING
AND DEVELOPMENT
DEPARTMENT**

Project
AGREEMENT NO. CE45/2008(CE)
LIANTANG/HEUNG YUEN WAI BOUNDARY
CONTROL POINT AND ASSOCIATED WORKS

Title
CUMULATIVE RESULT - CONTOUR OF TIER 2
HOURLY TSP CONCENTRATION ($\mu\text{g}/\text{m}^3$) AT 1.5m
ABOVE GROUND DURING CONSTRUCTION PHASE
(MITIGATED) FOR TH1 (SHEET 2 OF 2)

Designed	HC	Eng.Chk.	EC	
Drawn	MING	Coordination	EC	
Dwg.Chk.	HC	Approved	HT	
Scale at A1	Project	255228	Status	
1:2500	CAD File	jc255228\REPORT\ENV\ENV\A1\015\FIG 3-5.13.dgn	PRE	
Drawing No	FIGURE 3.5.13	Rev	P2	



KEY PLAN
SCALE 1:100000

LEGEND:

500m ASSESSMENT AREA

TENTATIVE WORKS AREA

TUNNEL SECTION

AOO CRITERIA

PROPOSED TUNNEL VENTILATION BUILDING

X AIR SENSITIVE RECEIVERS COMPLIED WITH AOO CRITERIA.

X AIR SENSITIVE RECEIVERS EXCEEDED AOO CRITERIA.

P2	NOV 10	MMH	FINAL ISSUE	HC	HT
P1	OCT 10	MING	FIRST ISSUE	HC	HT
Rev	Date	Drawn	Description	Ch'k'd	App'd

Mott MacDonald

20/F Two Landmark East
100 How Ming Street
Kowloon Tong, Kowloon
Hong Kong
T +852 2828 6787
F +852 2827 1823
W www.mottmac.com.hk

Client

CEDD

CIVIL ENGINEERING
AND DEVELOPMENT
DEPARTMENT

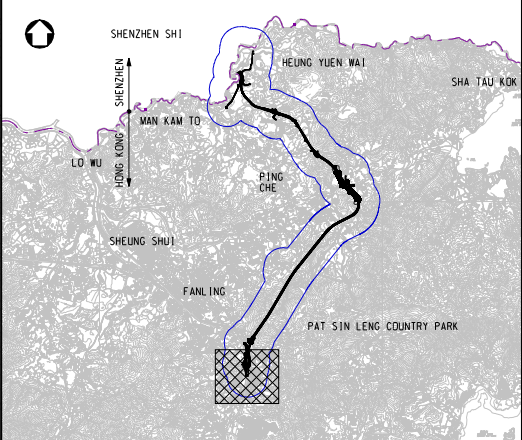
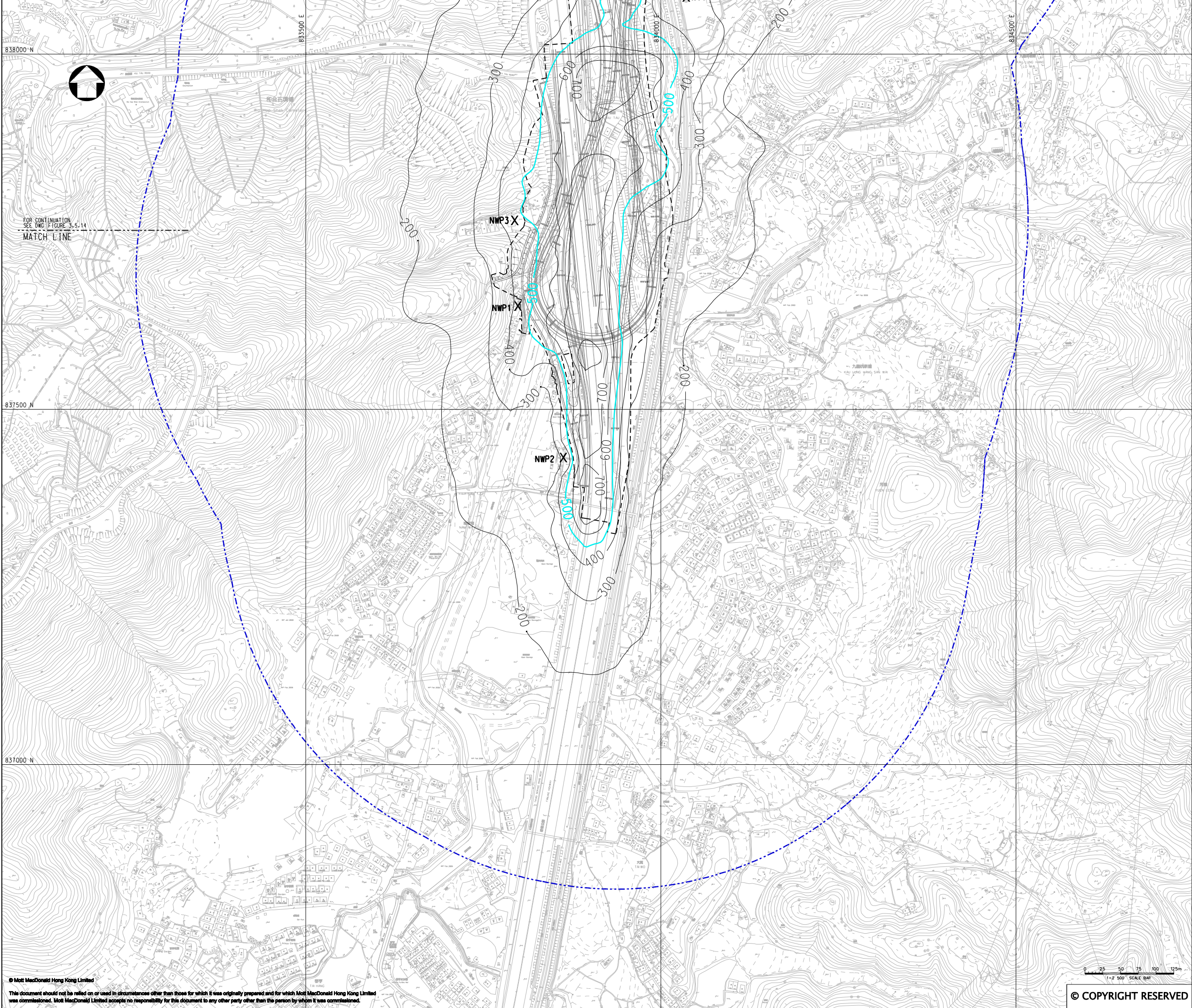
Project

AGREEMENT NO. CE45/2008(CE)
LIANTANG/HEUNG YUEN WAI BOUNDARY
CONTROL POINT AND ASSOCIATED WORKS

Title

CUMULATIVE RESULT - CONTOUR OF TIER 2
HOURLY TSP CONCENTRATION ($\mu\text{g}/\text{m}^3$) AT 1.5m
ABOVE GROUND DURING CONSTRUCTION PHASE
(MITIGATED) FOR NWP1, NWP2 & NWP3
(SHEET 1 OF 2)

Designed	HC	Eng.Chk.	EC	
Drawn	MING	Coordination	EC	
Dwg.Chk.	HC	Approved	HT	
Scale at A1	1:2500	Project	255228	Status
		CAD file	jc255228\REPORT\ENV\ENV\IA\N05\FIG_3-5.14.dgn	PRE
Drawing No				Rev
			FIGURE 3.5.14	P2




KEY PLAN
SCALE 1:100000

- LEGEND:
- 500m ASSESSMENT AREA
 - TENTATIVE WORKS AREA
 - AQO CRITERIA
 - X AIR SENSITIVE RECEIVERS COMPLIED WITH AQO CRITERIA.
 - X AIR SENSITIVE RECEIVERS EXCEEDED AQO CRITERIA.

P2	NOV 10	MMH	FINAL ISSUE	HC	HT
P1	OCT 10	MING	FIRST ISSUE	HC	HT
Rev	Date	Drawn	Description	Ch'k'd	App'd



20/F Two Landmark East
100 How Ming Street
Kowloon, Kowloon
Hong Kong
T +852 2828 6787
F +852 2827 1823
W www.mottmac.com.hk

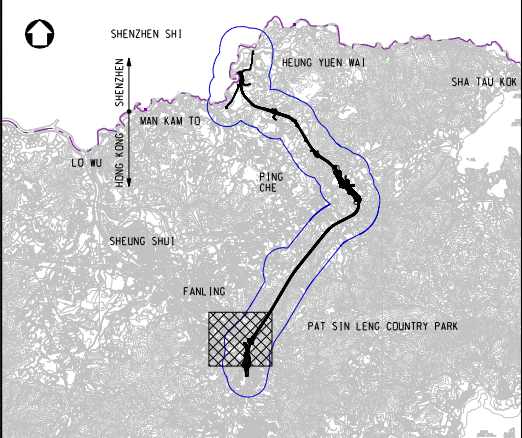
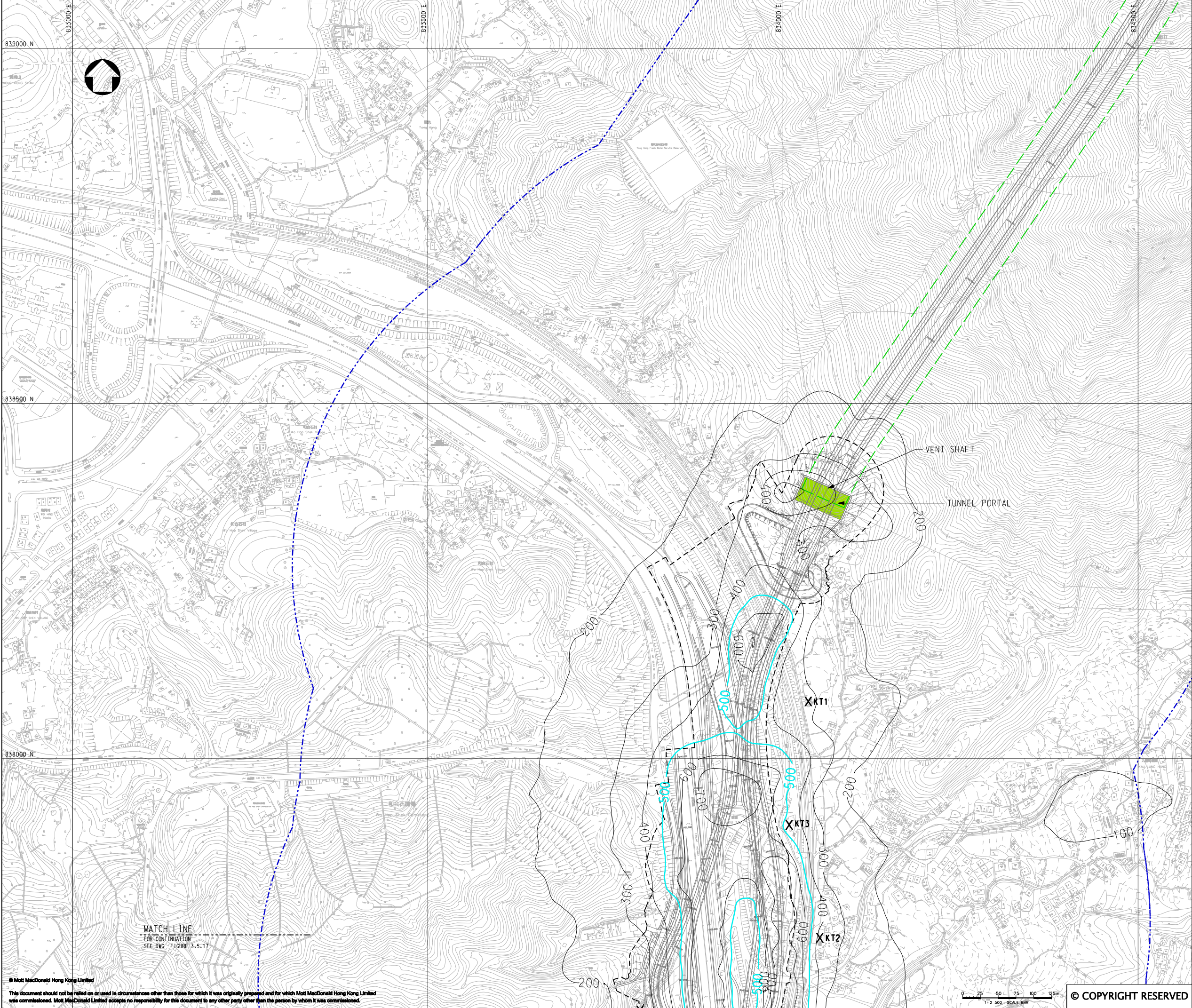


CIVIL ENGINEERING
AND DEVELOPMENT
DEPARTMENT

Project
AGREEMENT NO. CE45/2008(CE)
LIANTANG/HEUNG YUEN WAI BOUNDARY
CONTROL POINT AND ASSOCIATED WORKS

Title
CUMULATIVE RESULT - CONTOUR OF TIER 2
HOURLY TSP CONCENTRATION ($\mu\text{g}/\text{m}^3$) AT 1.5m
ABOVE GROUND DURING CONSTRUCTION PHASE
(MITIGATED) FOR NWP1, NWP2 & NWP3
(SHEET 2 OF 2)

Designed	HC	Eng.Chk.	EC
Drawn	MING	Coordination	EC
Dwg.Chk.	HC	Approved	HT
Scale at A1	Project	255228	Status
1:2500	CAD file	255228\REPORT\ENV\ENV\FIG 3-5.5.dgn	PRE
Drawing No	FIGURE 3.5.15	Rev	P2



KEY PLAN
SCALE 1:100000

LEGEND:

- 500m ASSESSMENT AREA
- TENTATIVE WORKS AREA
- TUNNEL SECTION
- ADD CRITERIA
- PROPOSED TUNNEL VENTILATION BUILDING
- X AIR SENSITIVE RECEIVERS COMPLIED WITH ADD CRITERIA.
- X AIR SENSITIVE RECEIVERS EXCEEDED ADD CRITERIA.

P2	NOV 10	MMH	FINAL ISSUE	HC	HT
P1	OCT 10	MING	FIRST ISSUE	HC	HT
Rev	Date	Drawn	Description	Ch'k'd	App'd

Mott MacDonald

20/F Two Landmark East
100 How Ming Street
Kowloon Tong, Kowloon
Hong Kong
T +852 2828 6787
F +852 2827 1823
W www.mottmac.com.hk

Client

CEDD

**CIVIL ENGINEERING
AND DEVELOPMENT
DEPARTMENT**

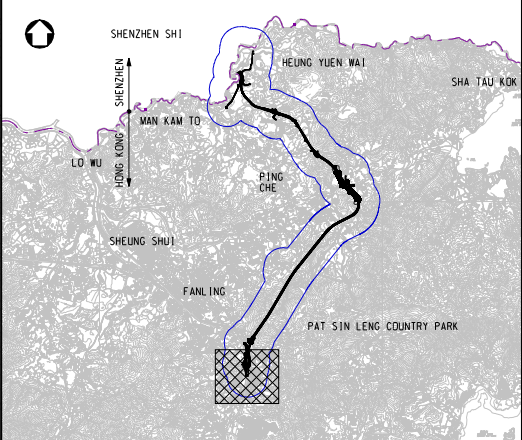
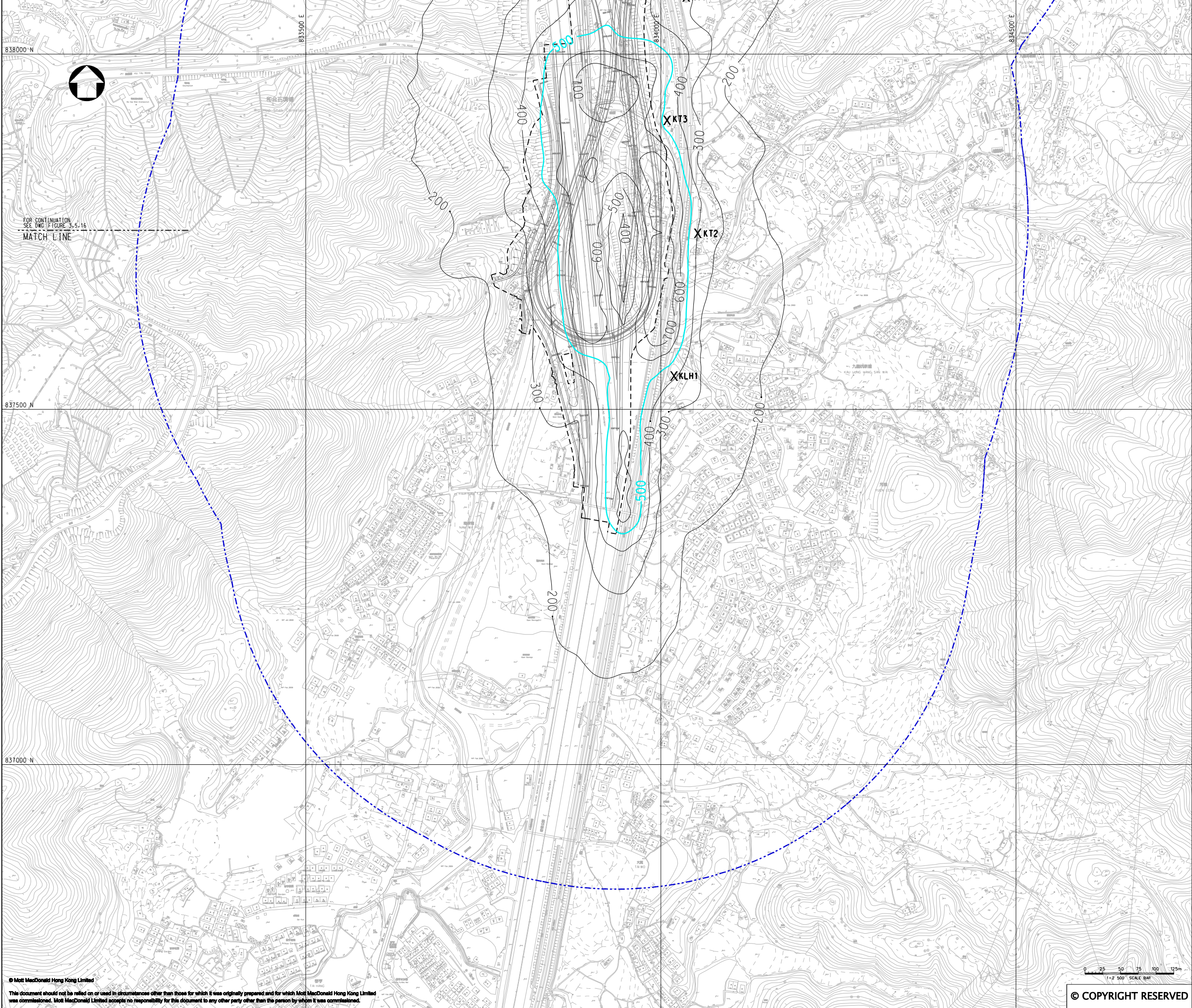
Project

AGREEMENT NO. CE45/2008(CE)
LIANTANG/HEUNG YUEN WAI BOUNDARY
CONTROL POINT AND ASSOCIATED WORKS

Title

CUMULATIVE RESULT - CONTOUR OF TIER 2
HOURLY TSP CONCENTRATION ($\mu\text{g}/\text{m}^3$) AT 1.5m
ABOVE GROUND DURING CONSTRUCTION PHASE
(MITIGATED) FOR KT1, KT2, KT3 & KLH1
(SHEET 1 OF 2)

Designed	HC	Eng.Chk.	EC
Drawn	MING	Coordination	EC
Dwg.Chk.	HC	Approved	HT
Scale at A1	1:2500	Project	255228
Drawing No	FIGURE 3.5.16	Status	PRE
		Rev	P2



KEY PLAN
SCALE 1:100000


- LEGEND:
- 500m ASSESSMENT AREA
 - TENTATIVE WORKS AREA
 - AQO CRITERIA
 - X AIR SENSITIVE RECEIVERS COMPLIED WITH AQO CRITERIA.
 - X AIR SENSITIVE RECEIVERS EXCEEDED AQO CRITERIA.

P2	NOV 10	MMH	FINAL ISSUE	HC	HT
P1	OCT 10	MING	FIRST ISSUE	HC	HT
Rev	Date	Drawn	Description	Ch'k'd	App'd



20/F Two Landmark East
100 How Ming Street
Kowloon, Kowloon
Hong Kong
T +852 2828 6787
F +852 2827 1823
W www.mottmac.com.hk

Client



**CIVIL ENGINEERING
AND DEVELOPMENT
DEPARTMENT**

Project
AGREEMENT NO. CE45/2008(CE)
LIANTANG/HEUNG YUEN WAI BOUNDARY
CONTROL POINT AND ASSOCIATED WORKS

Title
CUMULATIVE RESULT - CONTOUR OF TIER 2
HOURLY TSP CONCENTRATION ($\mu\text{g}/\text{m}^3$) AT 1.5m
ABOVE GROUND DURING CONSTRUCTION PHASE
(MITIGATED) FOR KT1, KT2, KT3 & KLH1
(SHEET 2 OF 2)

Designed	HC	Eng.Chk.	EC
Drawn	MING	Coordination	EC
Dwg.Chk.	HC	Approved	HT
Scale at A1	Project	255228	Status
1:2500	CAD File	J:\255228\REPORT\ENV\ENV\A1\015\FIG 3-5J7.dgn	PRE
Drawing No	FIGURE 3.5.17	Rev	P2