

KEY PLAN
SCALE 1:100000

LEGEND:

- BOUNDARY OF HK SAR
- 500m ASSESSMENT AREA
- TENTATIVE WORKS AREA
- AQO CRITERIA
- AIR SENSITIVE RECEIVERS COMPLIED WITH AQO CRITERIA.
- AIR SENSITIVE RECEIVERS EXCEEDED AQO CRITERIA.

P2	NOV 10	MMH	FINAL ISSUE	HC	HT
P1	SEP 10	MMH	FIRST ISSUE	HC	HT
Rev	Date	Drawn	Description	Ch'k'd	App'd

Mott MacDonald

20/F Two Landmark East
100 How Ming Street
Kowloon, Kowloon
Hong Kong
T +852 2828 6787
F +852 2827 1823
W www.mottmac.com.hk

Client

CEDD

**CIVIL ENGINEERING
AND DEVELOPMENT
DEPARTMENT**

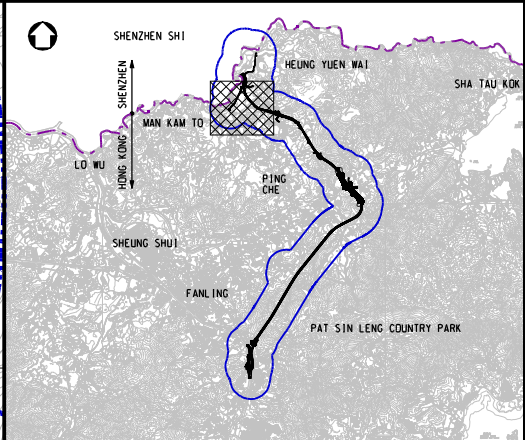
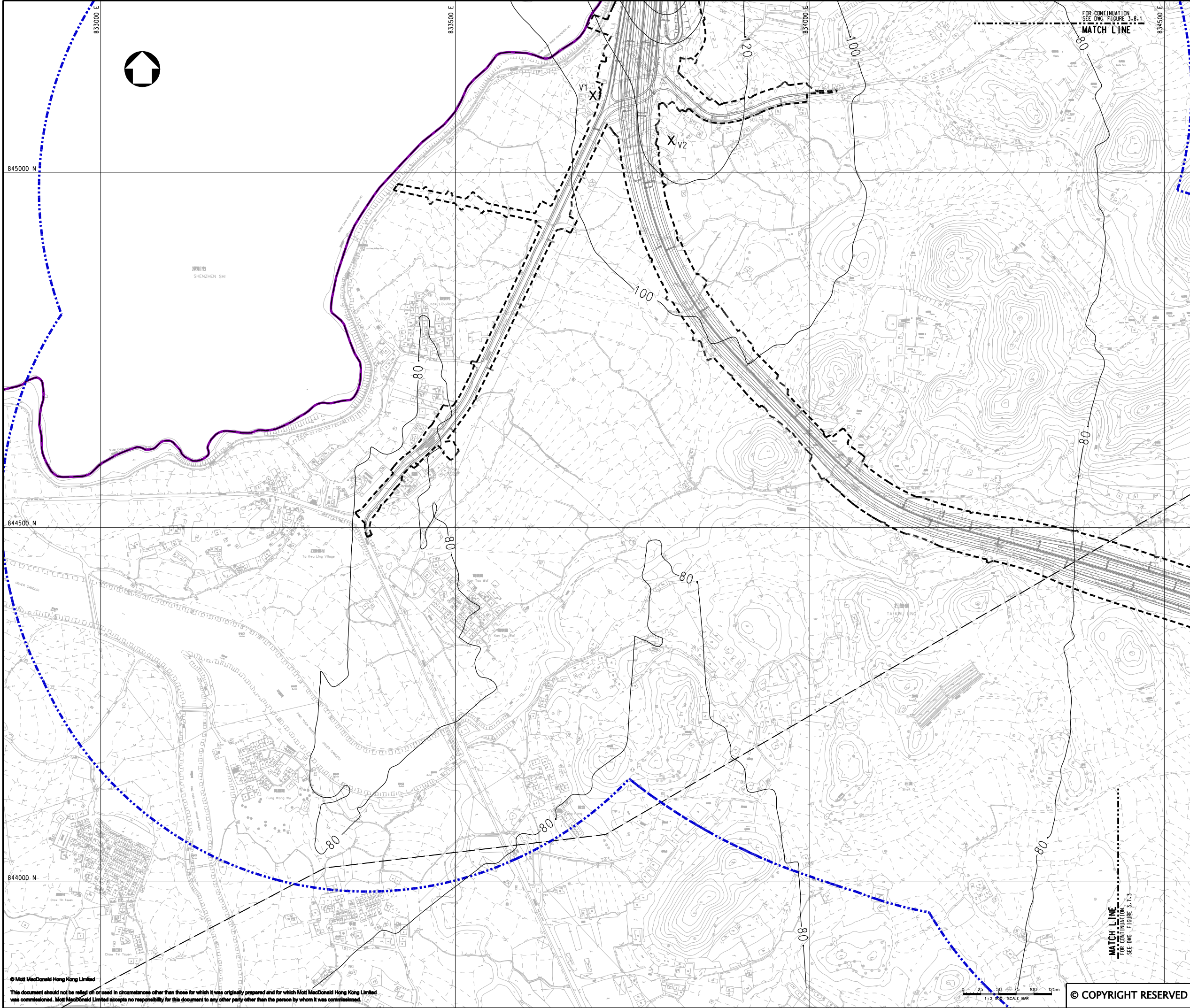
Project

AGREEMENT NO. CE45/2008(CE)
LIANTANG/HEUNG YUEN WAI BOUNDARY
CONTROL POINT AND ASSOCIATED WORKS

Title

CUMULATIVE RESULT - CONTOUR OF TIER 2
DAILY TSP CONCENTRATION ($\mu\text{g}/\text{m}^3$) AT 1.5m
ABOVE GROUND DURING CONSTRUCTION PHASE
(MITIGATED) FOR V1 & V2
(SHEET 1 OF 2)

Designed	HC	Eng.Chk.	EC	
Drawn	MING	Coordination	EC	
Dwg.Chk.	HC	Approved	HT	
Scale at A1	Project	255228	Status	
1:2500	CAD File	jc255228\REPORT\ENV\ENV\A1\015\FIG 3-7.1.dgn	PRE	
Drawing No	FIGURE 3.7.1	Rev	P2	



KEY PLAN
SCALE 1:100000

LEGEND:

- BOUNDARY OF HKSAR
- 500m ASSESSMENT AREA
- TENTATIVE WORKS AREA
- X AIR SENSITIVE RECEIVERS COMPLIED WITH ADO CRITERIA.

P1	SEP 10	MMH	FIRST ISSUE	HC	HT
Rev	Date	Drawn	Description	Ch'k'd	App'd

20/F Two Landmark East
100 How Ming Street
Kowloon
Hong Kong
T +852 2828 6787
F +852 2827 1823
W www.mottmac.com.hk

Client

CIVIL ENGINEERING
AND DEVELOPMENT
DEPARTMENT

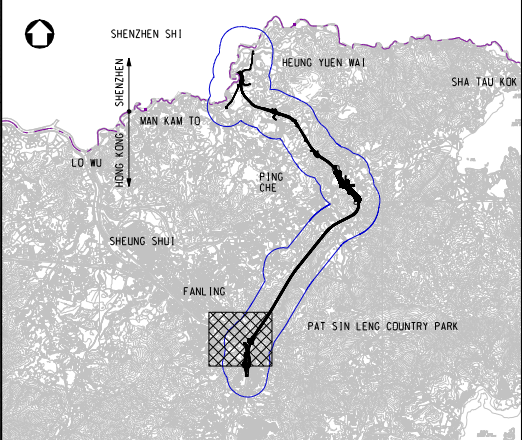
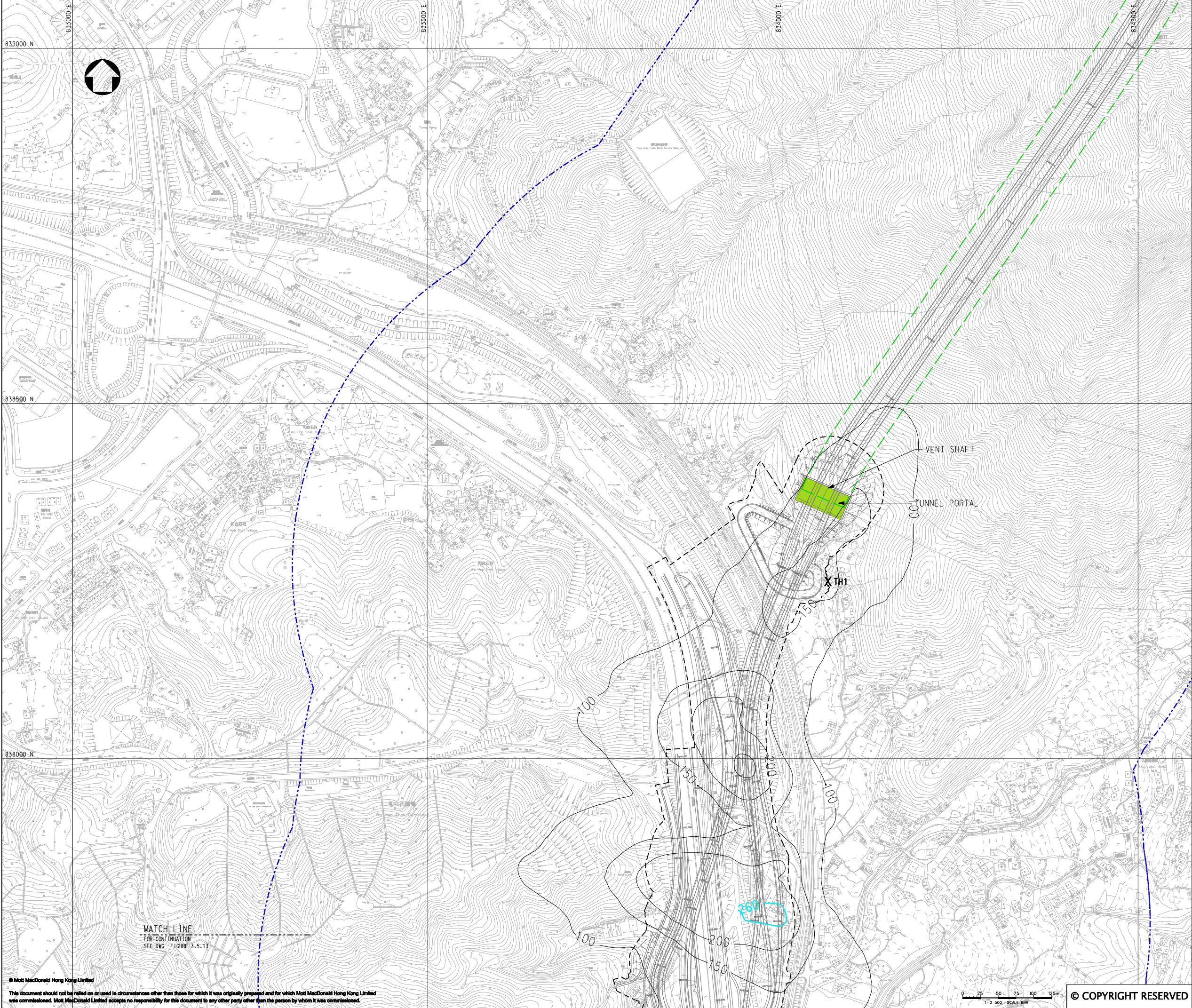
Project

AGREEMENT NO. CE45/2008(CE)
LIANTANG/HEUNG YUEN WAI BOUNDARY
CONTROL POINT AND ASSOCIATED WORKS

Title

CUMULATIVE RESULT - CONTOUR OF TIER 2
DAILY TSP CONCENTRATION ($\mu\text{g}/\text{m}^3$) AT 1.5m
ABOVE GROUND DURING CONSTRUCTION PHASE
(MITIGATED) FOR V1 & V2
(SHEET 2 OF 2)

Designed	HC	Eng.Chk.	EC	
Drawn	MING	Coordination	EC	
Dwg.Chk.	HC	Approved	HT	
Scale at A1	1:2500	Project	255228	Status
		CAD file	J:\255228\report\env\elo\005\FIG 3-7.2.dgn	PRE
Drawing No				Rev
				P1



KEY PLAN
SCALE 1:100000

LEGEND:

- 500m ASSESSMENT AREA
- TENTATIVE WORKS AREA
- TUNNEL SECTION
- ADD CRITERIA
- PROPOSED TUNNEL VENTILATION BUILDING
- AIR SENSITIVE RECEIVERS COMPLIED WITH ADD CRITERIA.
- AIR SENSITIVE RECEIVERS EXCEEDED ADD CRITERIA.

P2	NOV 10	MMH	FINAL ISSUE	HC	HT
P1	SEP 10	MMH	FIRST ISSUE	HC	HT
Rev	Date	Drawn	Description	Ch'k'd	App'd

Mott MacDonald

20/F Two Landmark East
100 How Ming Street
Kowloon, Kowloon
Hong Kong
T +852 2828 6787
F +852 2827 1823
W www.mottmac.com.hk

Client

CEDD

**CIVIL ENGINEERING
AND DEVELOPMENT
DEPARTMENT**

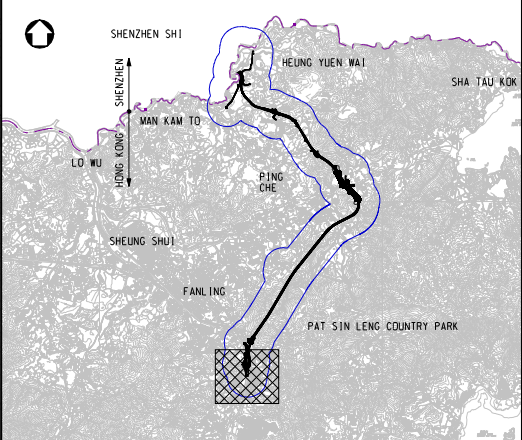
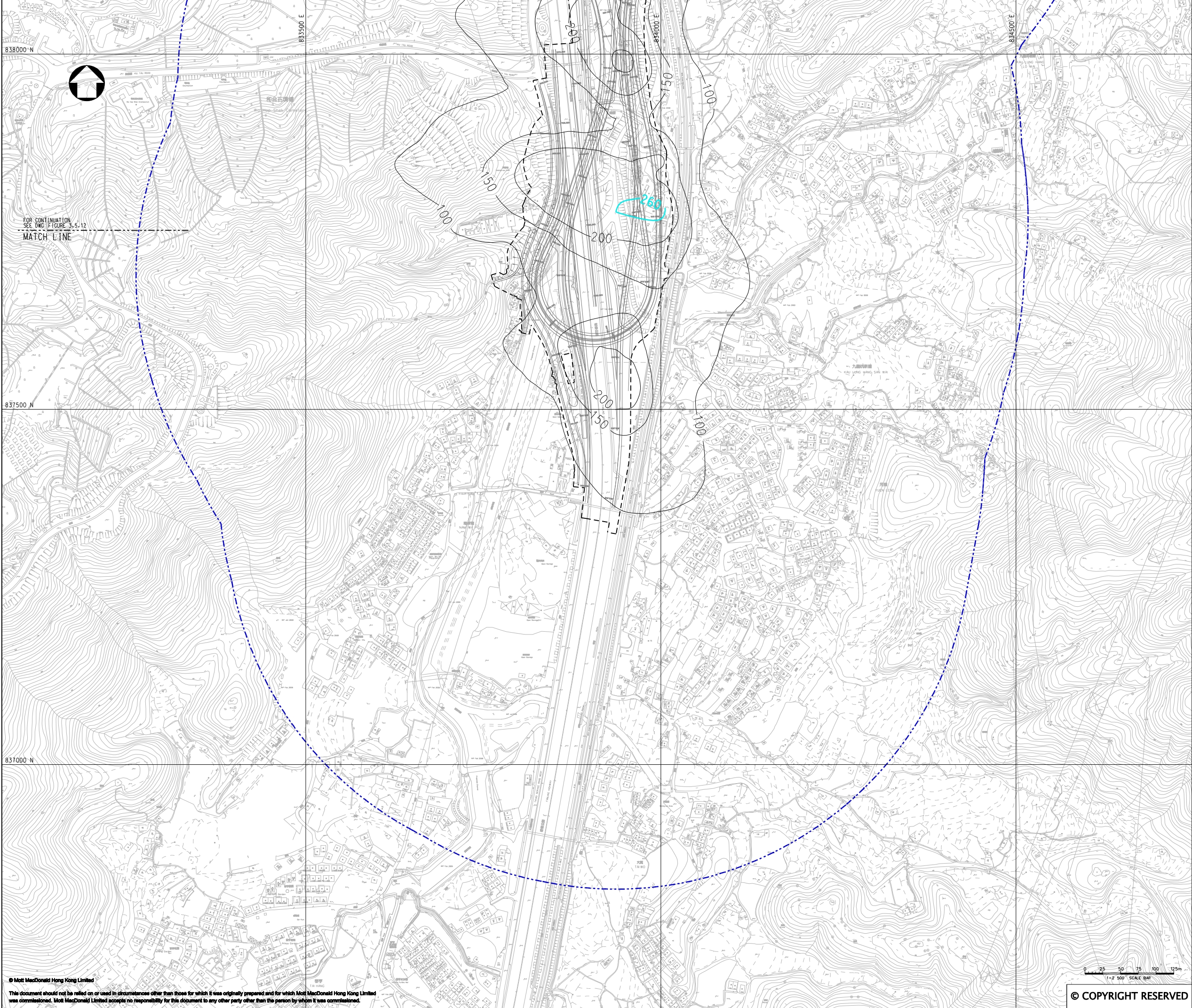
Project

AGREEMENT NO. CE45/2008(CE)
LIANTANG/HEUNG YUEN WAI BOUNDARY
CONTROL POINT AND ASSOCIATED WORKS

Title

CUMULATIVE RESULT - CONTOUR OF TIER 2
DAILY TSP CONCENTRATION ($\mu\text{g}/\text{m}^3$) AT 1.5m
ABOVE GROUND DURING CONSTRUCTION PHASE
(MITIGATED) FOR TH1
(SHEET 1 OF 2)

Designed	HC	Eng.Chk.	EC	
Drawn	MING	Coordination	EC	
Dwg.Chk.	HC	Approved	HT	
Scale at A1	1:2500	Project	255228	Status
		CAD File	jc255228\REPORT\ENV\ENV\A1\0105\FIG 3-7.3.dgn	PRE
Drawing No				Rev
			FIGURE 3.7.3	P2



KEY PLAN
SCALE 1:100000

- LEGEND:
- 500m ASSESSMENT AREA
 - TENTATIVE WORKS AREA
 - AQO CRITERIA
 - AIR SENSITIVE RECEIVERS COMPLIED WITH AQO CRITERIA.
 - AIR SENSITIVE RECEIVERS EXCEEDED AQO CRITERIA.

P2	NOV 10	MMH	FINAL ISSUE	HC	HT
P1	SEP 10	MMH	FIRST ISSUE	HC	HT
Rev	Date	Drawn	Description	Chk'd	App'd



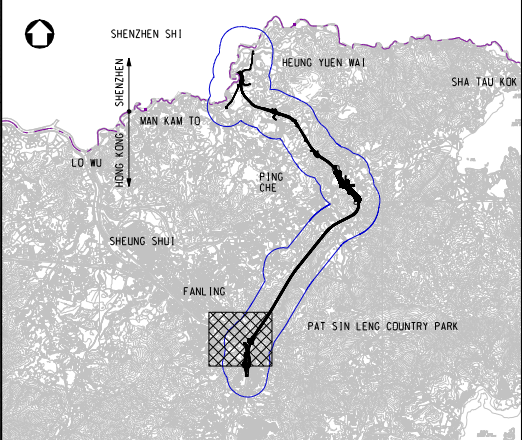
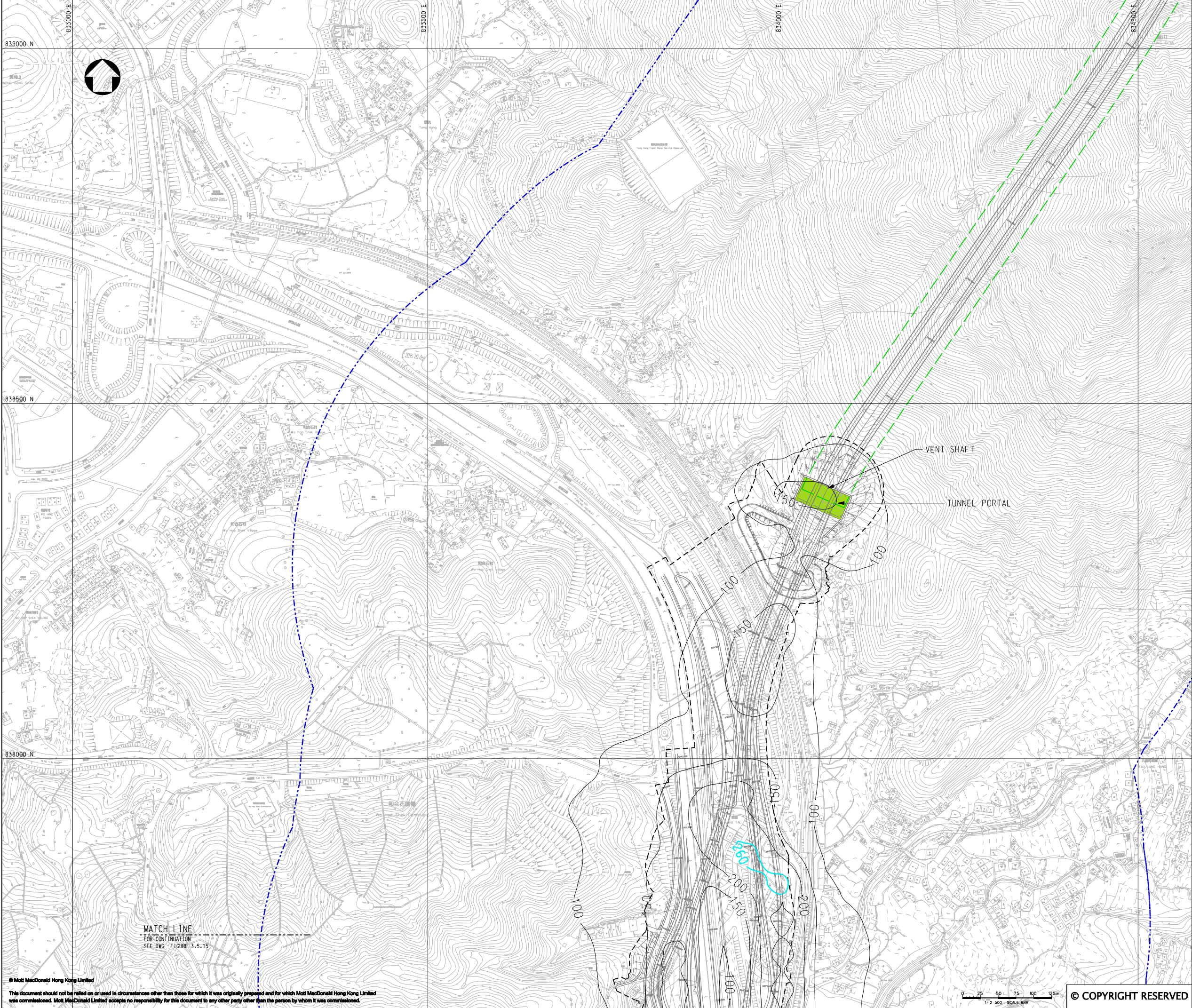
20/F Two Landmark East
100 How Ming Street
Kowloon, Kowloon
Hong Kong
T +852 2828 6787
F +852 2827 1823
W www.mottmac.com.hk

Client	CIVIL ENGINEERING AND DEVELOPMENT DEPARTMENT
--------	--

Project	AGREEMENT NO. CE45/2008(CE) LIANTANG/HEUNG YUEN WAI BOUNDARY CONTROL POINT AND ASSOCIATED WORKS
---------	---

Title	CUMULATIVE RESULT - CONTOUR OF TIER 2 DAILY TSP CONCENTRATION ($\mu\text{g}/\text{m}^3$) AT 1.5m ABOVE GROUND DURING CONSTRUCTION PHASE (MITIGATED) FOR TH1 (SHEET 2 OF 2)
-------	--

Designed	HC	Eng.Chk.	EC
Drawn	MING	Coordination	EC
Dwg.Chk.	HC	Approved	HT
Scale at A1	Project	255228	Status
1:2500	CAD File	J:\255228\REPORT\ENV\ENV\A1\015\FIG 3-7.4.dgn	PRE
Drawing No	FIGURE 3.7.4	Rev	P2



KEY PLAN
SCALE 1:100000

- LEGEND:
- 500m ASSESSMENT AREA
 - TENTATIVE WORKS AREA
 - TUNNEL SECTION
 - AOD CRITERIA
 - PROPOSED TUNNEL VENTILATION BUILDING
 - AIR SENSITIVE RECEIVERS COMPLIED WITH AOD CRITERIA.
 - AIR SENSITIVE RECEIVERS EXCEEDED AOD CRITERIA.

P2	NOV 10	MMH	FINAL ISSUE	HC	HT
P1	SEP 10	MING	FIRST ISSUE	HC	HT
Rev	Date	Drawn	Description	Ch'k'd	App'd



20/F Two Landmark East
100 How Ming Street
Kowloon Tong, Kowloon
Hong Kong
T +852 2828 6787
F +852 2827 1823
W www.mottmac.com.hk

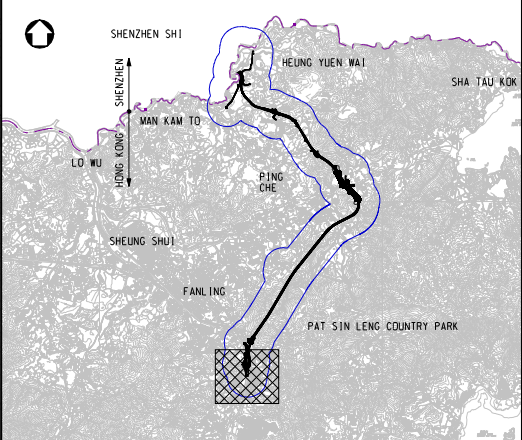
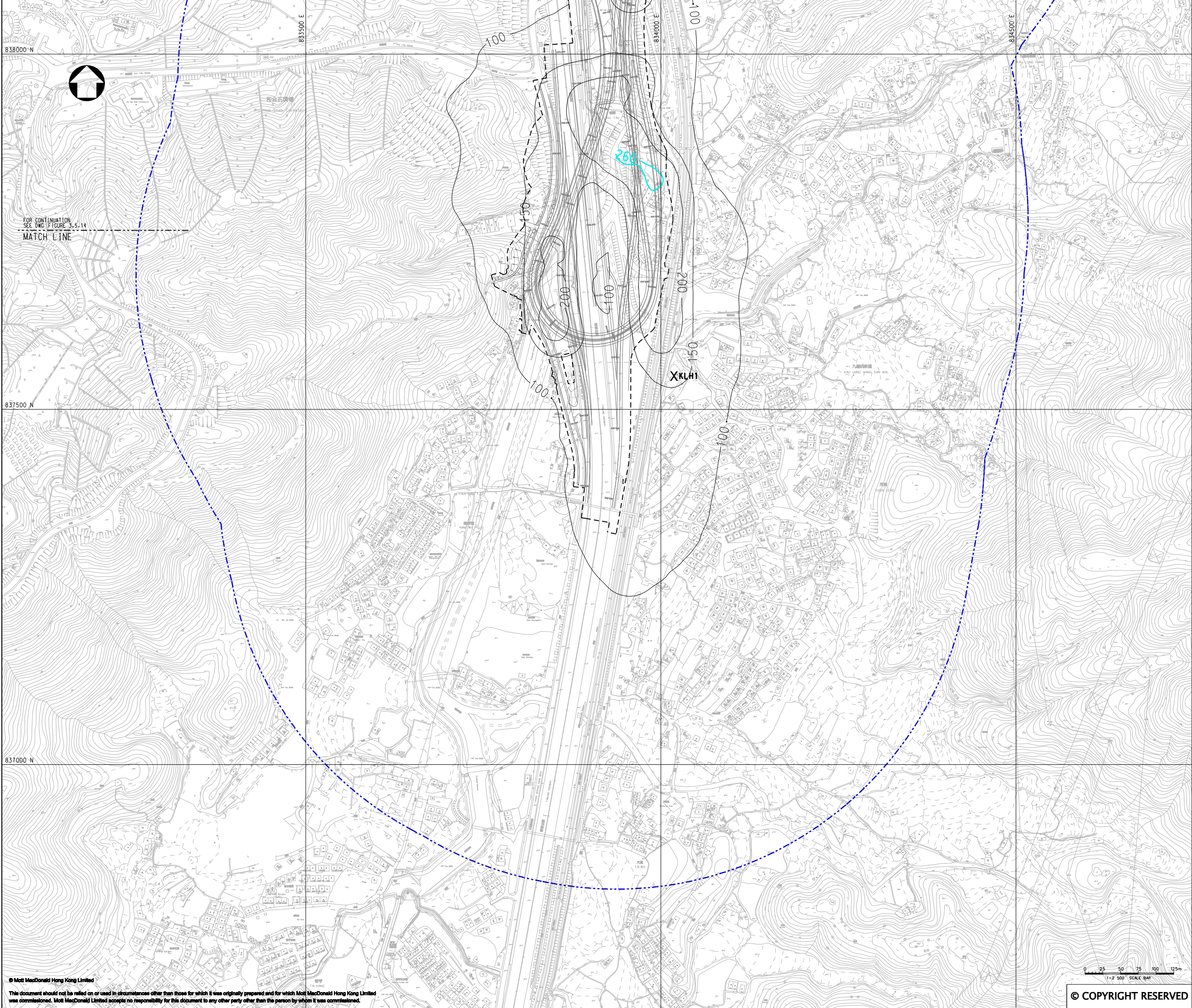


CIVIL ENGINEERING
AND DEVELOPMENT
DEPARTMENT

Project
AGREEMENT NO. CE45/2008(CE)
LIANTANG/HEUNG YUEN WAI BOUNDARY
CONTROL POINT AND ASSOCIATED WORKS

Title
CUMULATIVE RESULT - CONTOUR OF TIER 2
DAILY TSP CONCENTRATION ($\mu\text{g}/\text{m}^3$) AT 1.5m
ABOVE GROUND DURING CONSTRUCTION PHASE
(MITIGATED) FOR KLH1
(SHEET 1 OF 2)

Designed	HC	Eng.Chk.	EC	
Drawn	MING	Coordination	EC	
Dwg.Chk.	HC	Approved	HT	
Scale at A1	1:2500	Project	255228	Status
		CAD file	jk\255228\REPORT\ENV\ENV\A1\015\FIG 3-7.5.dgn	PRE
Drawing No				Rev
			FIGURE 3.7.5	P2



KEY PLAN
SCALE 1:100000

LEGEND:

500m ASSESSMENT AREA

TENTATIVE WORKS AREA

AQO CRITERIA

X

AIR SENSITIVE RECEIVERS COMPLIED WITH AQO CRITERIA.

X

AIR SENSITIVE RECEIVERS EXCEEDED AQO CRITERIA.

P2	NOV 10	MMH	FINAL ISSUE	HC	HT
P1	SEP 10	MING	FIRST ISSUE	HC	HT
Rev	Date	Drawn	Description	Ch'k'd	App'd

20/F Two Landmark East
100 How Ming Street
Kowloon, Kowloon
Hong Kong
T +852 2828 6787
F +852 2827 1823
W www.mottmac.com.hk

Client

CIVIL ENGINEERING
AND DEVELOPMENT
DEPARTMENT

Project

AGREEMENT NO. CE45/2008(CE)
LIANTANG/HEUNG YUEN WAI BOUNDARY
CONTROL POINT AND ASSOCIATED WORKS

Title

CUMULATIVE RESULT - CONTOUR OF TIER 2
DAILY TSP CONCENTRATION ($\mu\text{g}/\text{m}^3$) AT 1.5m
ABOVE GROUND DURING CONSTRUCTION PHASE
(MITIGATED) FOR KLH1
(SHEET 2 OF 2)

Designed	HC	Eng.Chk.	EC	
Drawn	MING	Coordination	EC	
Dwg.Chk.	HC	Approved	HT	
Scale at A1	Project	255228	Status	
1:2500	CAD file	J:\255228\REPORT\ENV\ENV\A1\015\FIG 3-7.6.dgn	PRE	
Drawing No	FIGURE 3.7.6	Rev	P2	