

KEY PLAN
SCALE 1:100000

LEGEND:

- BOUNDARY OF HKSAR
- 500m ASSESSMENT AREA
- TENTATIVE WORKS AREA
- AQO CRITERIA
- AIR SENSITIVE RECEIVERS COMPLIED WITH AQO CRITERIA.
- AIR SENSITIVE RECEIVERS EXCEEDED AQO CRITERIA.

P2	NOV 10	MMH	FINAL ISSUE	HC	HT
P1	SEP 10	MMH	FIRST ISSUE	HC	HT
Rev	Date	Drawn	Description	Ch'k'd	App'd

Mott MacDonald

20/F Two Landmark East
100 How Ming Street
Kowloon, Kowloon
Hong Kong
T +852 2828 6787
F +852 2827 1823
W www.mottmac.com.hk

Client

CEDD

**CIVIL ENGINEERING
AND DEVELOPMENT
DEPARTMENT**

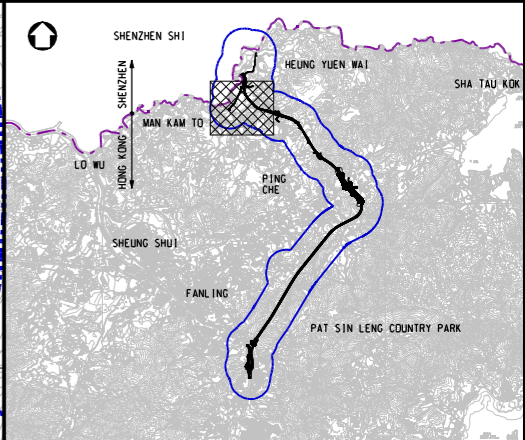
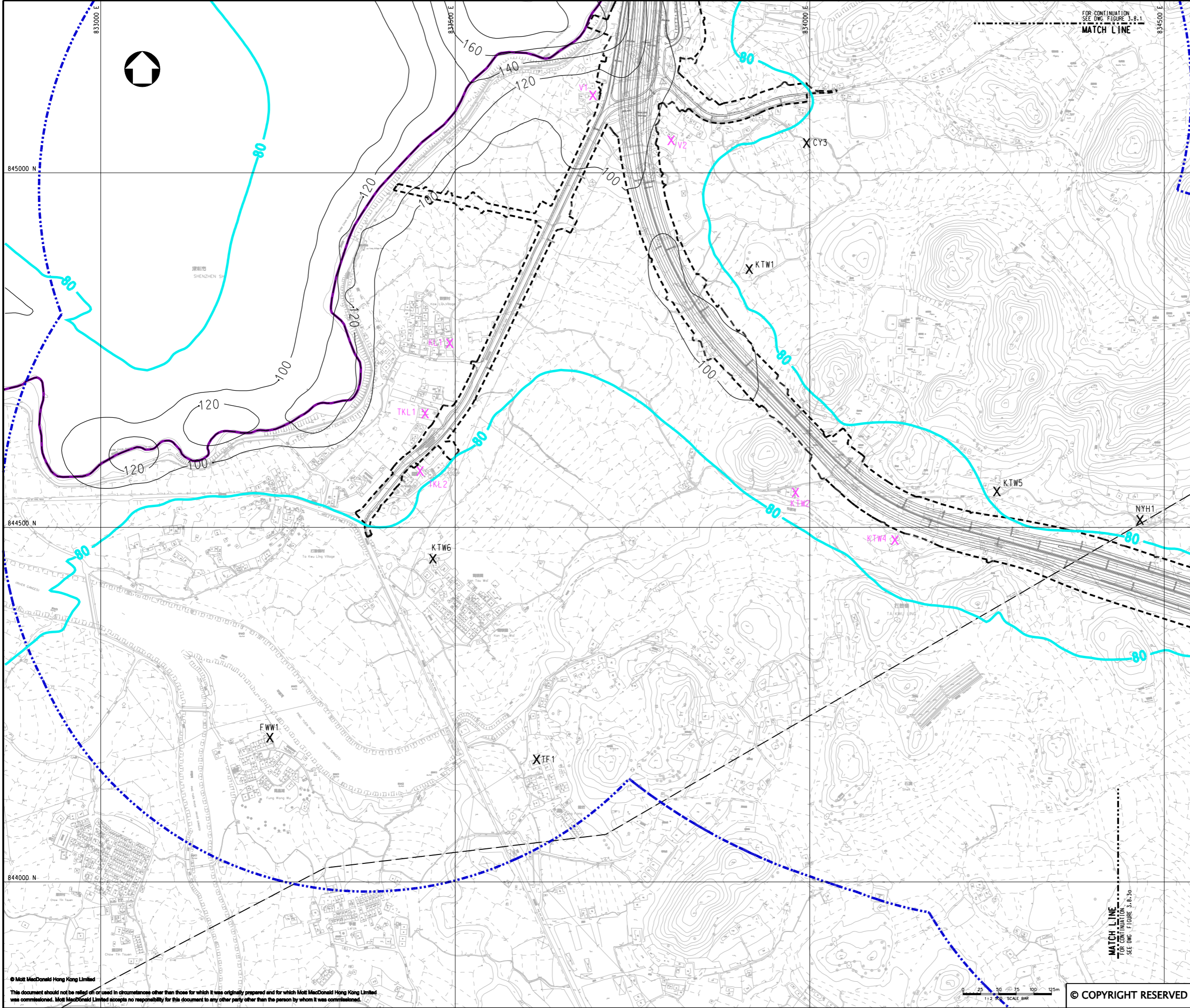
Project

AGREEMENT NO. CE45/2008(CE)
LIANTANG/HEUNG YUEN WAI BOUNDARY
CONTROL POINT AND ASSOCIATED WORKS

Title

CUMULATIVE RESULT - CONTOUR OF ANNUAL
TSP CONCENTRATION ($\mu\text{g}/\text{m}^3$) AT 1.5m ABOVE
GROUND DURING CONSTRUCTION PHASE (UNMITIGATED)
FOR NORTHERN SECTION (SHEET 1 OF 4)

Designed	HC	Eng.Chk.	EC	
Drawn	MING	Coordination	EC	
Dwg.Chk.	HC	Approved	HT	
Scale at A1	Project	255228	Status	
1:2500	CAD File	REPORT\ENV\ENV\1005\FIG 3-8.1a.dgn	PRE	
Drawing No	FIGURE 3.8.1a	Rev	P2	



KEY PLAN
SCALE 1:100000

LEGEND:

- BOUNDARY OF HKSAR
- 500m ASSESSMENT AREA
- TENTATIVE WORKS AREA
- ADD CRITERIA
- X AIR SENSITIVE RECEIVERS COMPLIED WITH ADD CRITERIA.
- X AIR SENSITIVE RECEIVERS EXCEEDED ADD CRITERIA.

P2	NOV 10	MMH	FINAL ISSUE	HC	HT
P1	OCT 10	MMH	FIRST ISSUE	HC	HT
Rev	Date	Drawn	Description	Ch'k'd	App'd

20/F Two Landmark East
100 How Ming Street
Kowloon
Hong Kong
T +852 2828 6787
F +852 2827 1823
W www.mottmac.com.hk

Client

CIVIL ENGINEERING
AND DEVELOPMENT
DEPARTMENT

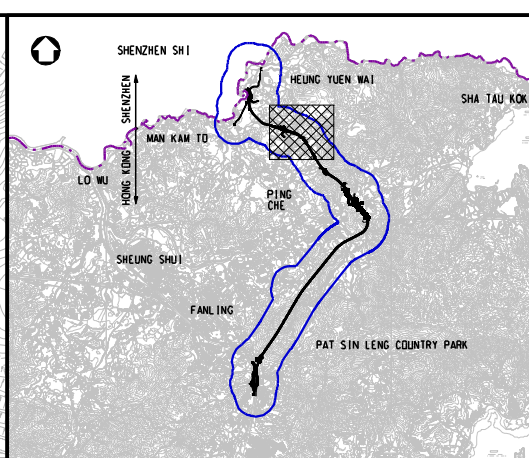
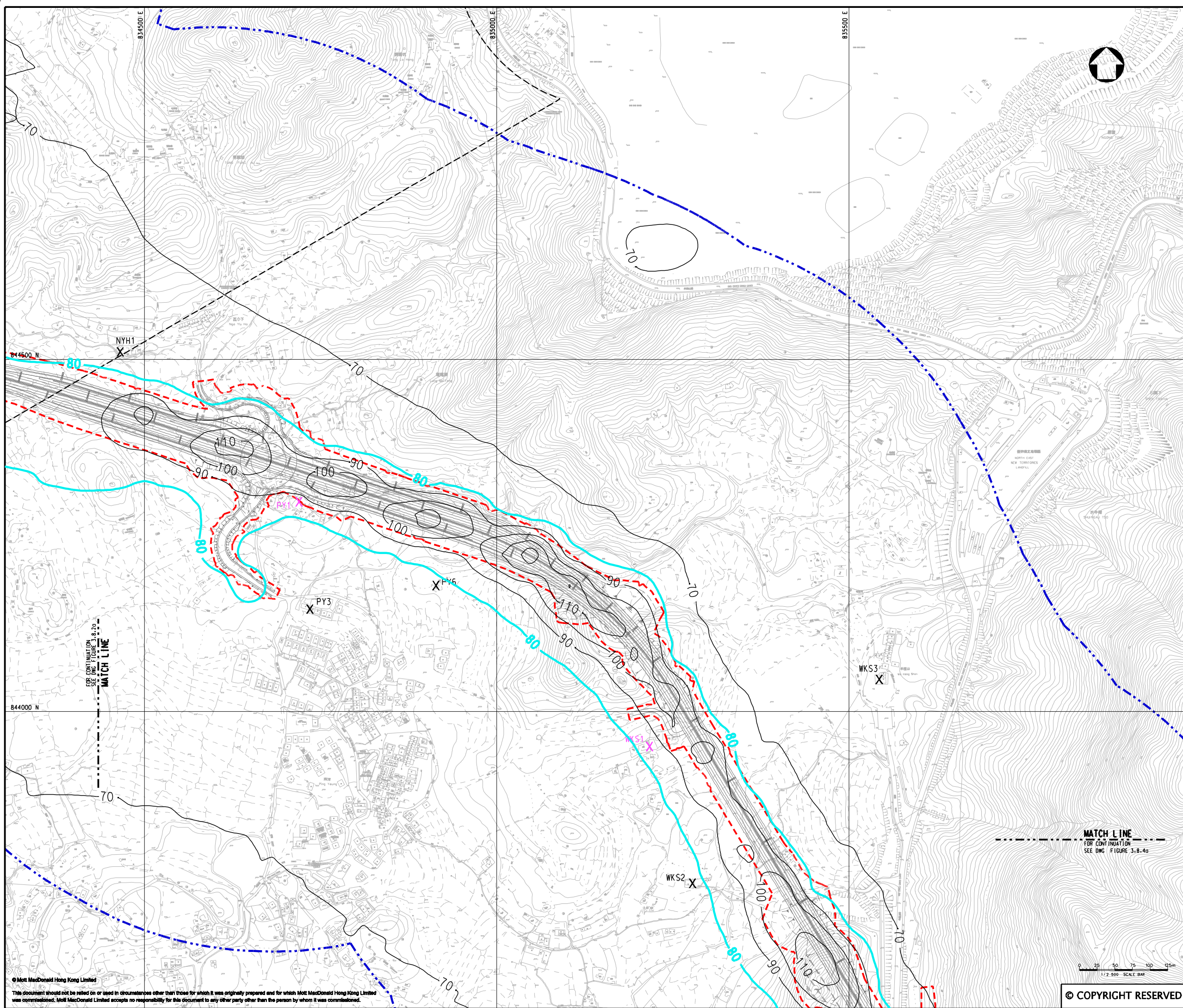
Project

AGREEMENT NO. CE45/2008(CE)
LIANTANG/HEUNG YUEN WAI BOUNDARY
CONTROL POINT AND ASSOCIATED WORKS

Title

CUMULATIVE RESULT - CONTOUR OF ANNUAL
TSP CONCENTRATION ($\mu\text{g}/\text{m}^3$) AT 1.5m ABOVE
GROUND DURING CONSTRUCTION PHASE (UNMITIGATED)
FOR NORTHERN SECTION (SHEET 2 OF 4)

Designed	HC	Eng.Chk.	EC	
Drawn	MING	Coordination	EC	
Dwg.Chk.	HC	Approved	HT	
Scale at A1	1:2500	Project	255228	Status
		CAD file	j:\255228\report\env\elo\05\FIG 3-8.2a.dgn	PRE
Drawing No				Rev
				P2



KEY PLAN
SCALE 1:100000

LEGEND:

500m ASSESSMENT AREA

TENTATIVE WORKS AREA

AOD CRITERIA

X

AIR SENSITIVE RECEIVERS COMPLIED WITH AOD CRITERIA.

X

AIR SENSITIVE RECEIVERS EXCEEDED AOD CRITERIA.

P2	NOV 10	MMH	FINAL ISSUE	HC	HT
P1	SEP 10	MMH	FIRST ISSUE	HC	HT
Rev	Date	Drawn	Description	Ch'k'd	App'd

20/F Two Landmark East
100 How Ming Street
Kowloon, Kowloon
Hong Kong
T +852 2828 5757
F +852 2827 1823
W www.mottmac.com.hk

Client

CIVIL ENGINEERING
AND DEVELOPMENT
DEPARTMENT

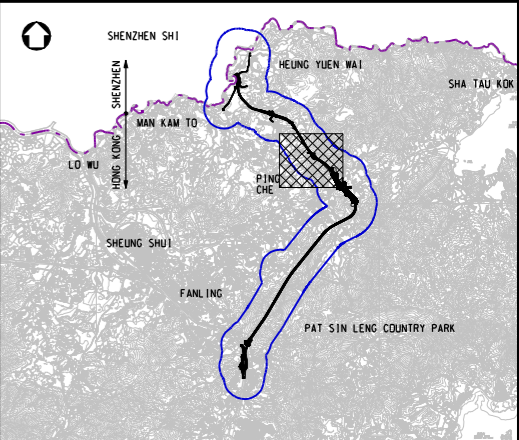
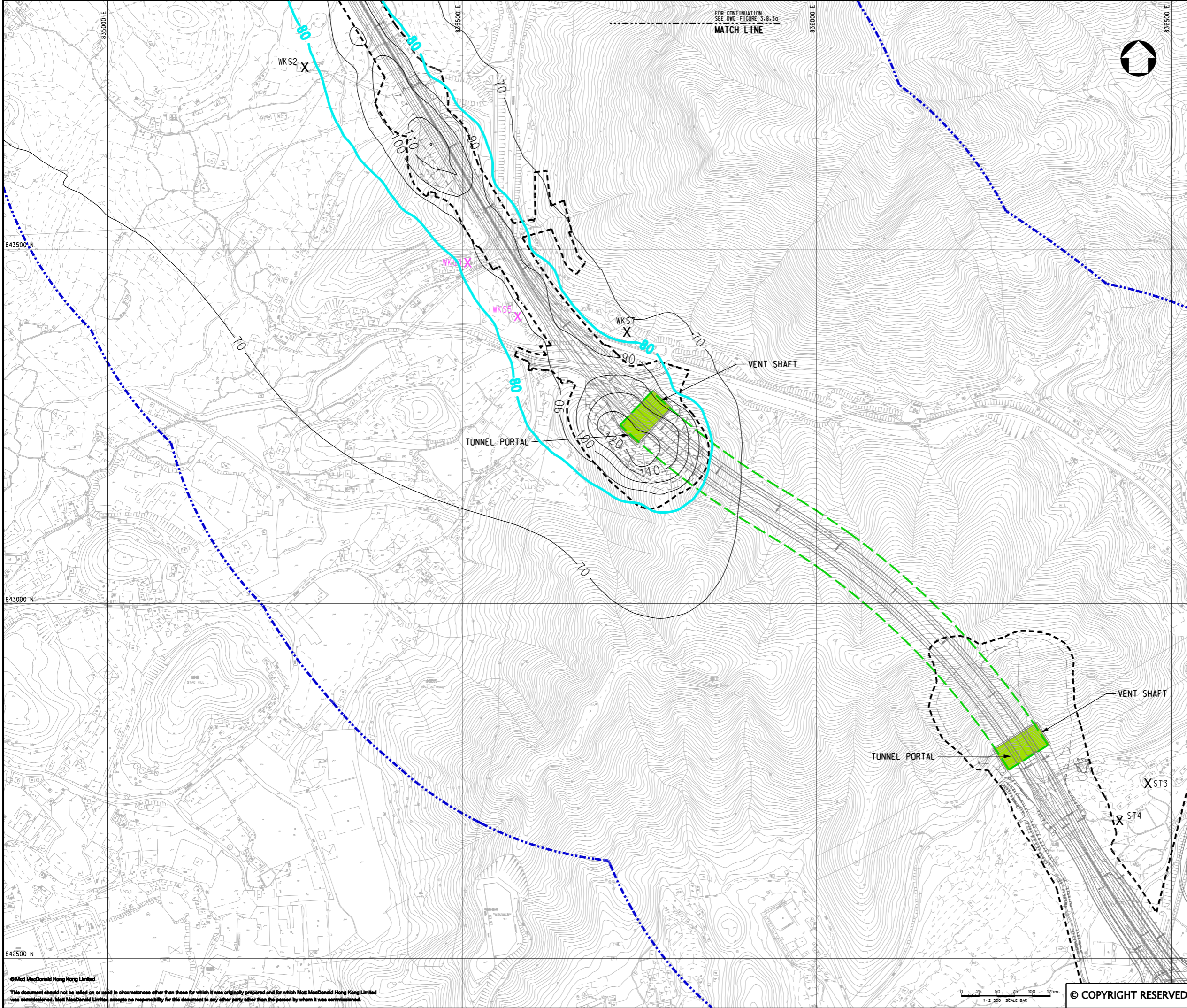
Project

AGREEMENT NO. CE45/2008(CE)
LIANTANG/HEUNG YUEN WAI BOUNDARY
CONTROL POINT AND ASSOCIATED WORKS

Title

CUMULATIVE RESULT - CONTOUR OF ANNUAL
TSP CONCENTRATION ($\mu\text{g}/\text{m}^3$) AT 1.5m
ABOVE GROUND DURING CONSTRUCTION PHASE
(UNMITIGATED) FOR NORTHERN SECTION
(SHEET 3 OF 4)

Designed	HC		Eng.Chk.	EC	
Drawn	MING		Coordination	EC	
Dwg.Chk.	HC		Approved	HT	
Scale at A1	Project	255228	Status		
1:2500	CAD file	Report\env\velo\DIRS\FIG 3-8.3a.dgn	PRE		
Drawing No	FIGURE 3.8.3a	Rev	P2		



KEY PLAN
SCALE 1:100000

LEGEND:

- 500m ASSESSMENT AREA
- TENTATIVE WORKS AREA
- TUNNEL SECTION
- ADD CRITERIA
- PROPOSED TUNNEL VENTILATION BUILDING
- AIR SENSITIVE RECEIVERS COMPLIED WITH ADD CRITERIA.
- AIR SENSITIVE RECEIVERS EXCEEDED ADD CRITERIA.

P2	NOV 10	MMH	FINAL ISSUE	HC	HT
P1	SEP 10	MMH	FIRST ISSUE	HC	HT
Rev	Date	Drawn	Description	Ch'k'd	App'd

Mott MacDonald

20/F Two Landmark East
100 How Ming Street
Kowloon Tong, Kowloon
Hong Kong
T +852 2828 6787
F +852 2827 1823
W www.mottmac.com.hk

Client

CEDD

CIVIL ENGINEERING
AND DEVELOPMENT
DEPARTMENT

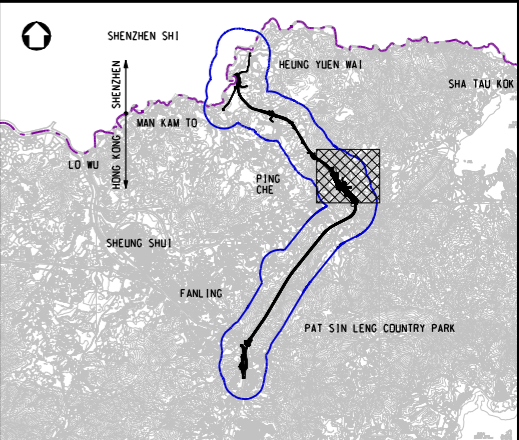
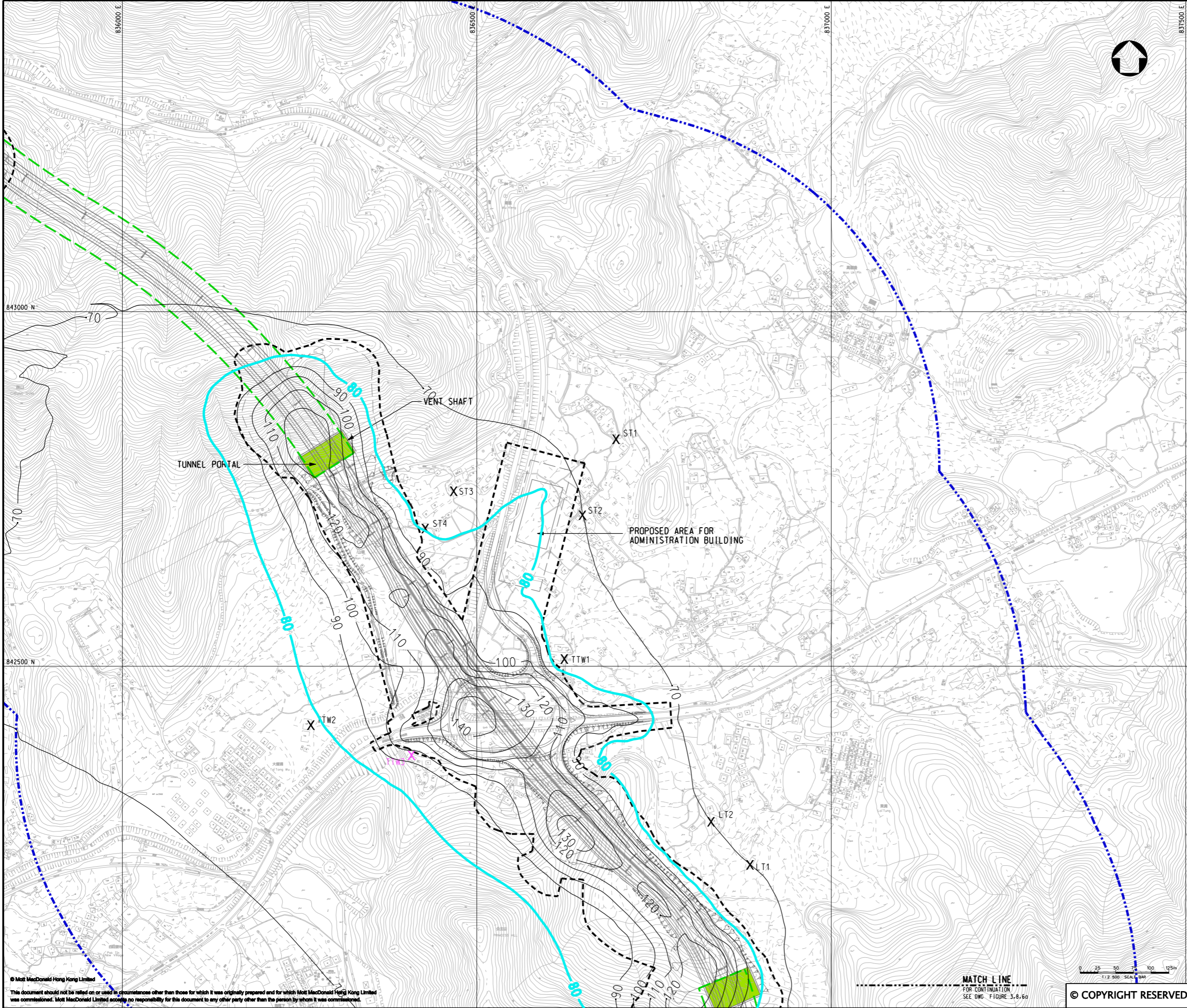
Project

AGREEMENT NO. CE45/2008(CE)
LIANTANG/HEUNG YUEN WAI BOUNDARY
CONTROL POINT AND ASSOCIATED WORKS

Title

CUMULATIVE RESULT - CONTOUR OF ANNUAL
TSP CONCENTRATION ($\mu\text{g}/\text{m}^3$) AT 1.5m
ABOVE GROUND DURING CONSTRUCTION PHASE
(UNMITIGATED) FOR NORTHERN SECTION
(SHEET 4 OF 4)

Designed	HC	Eng.Chk.	EC
Drawn	MING	Coordination	EC
Dwg.Chk.	HC	Approved	HT
Scale at A1	Project	255228	Status
1:2500	CAD file	j:\255228\report\env\elo\005\FIG 3-8.4a.dgn	PRE
Drawing No	FIGURE 3.8.4a	Rev	P2



KEY PLAN
SCALE 1:100000

LEGEND:

- 500m ASSESSMENT AREA
- TENTATIVE WORKS AREA
- TUNNEL SECTION
- ADD CRITERIA
- PROPOSED TUNNEL VENTILATION BUILDING
- X AIR SENSITIVE RECEIVERS COMPLIED WITH ADD CRITERIA.
- X AIR SENSITIVE RECEIVERS EXCEEDED ADD CRITERIA.

P2	NOV 10	MMH	FINAL ISSUE	HC	HT
P1	SEP 10	MMH	FIRST ISSUE	HC	HT
Rev	Date	Drawn	Description	Ch'k'd	App'd

Mott MacDonald

20/F Two Landmark East
100 How Ming Street
Kowloon Tong, Kowloon
Hong Kong
T +852 2828 6787
F +852 2827 1823
W www.mottmac.com.hk

Client

CEDD

**CIVIL ENGINEERING
AND DEVELOPMENT
DEPARTMENT**

Project

AGREEMENT NO. CE45/2008(CE)
LIANTANG/HEUNG YUEN WAI BOUNDARY
CONTROL POINT AND ASSOCIATED WORKS

Title

CUMULATIVE RESULT - CONTOUR OF ANNUAL
TSP CONCENTRATION ($\mu\text{g}/\text{m}^3$) AT 1.5m
ABOVE GROUND DURING CONSTRUCTION PHASE
(UNMITIGATED) FOR LOI TUNG
(SHEET 1 OF 2)

Designed	HC	Eng.Chk.	EC	
Drawn	MING	Coordination	EC	
Dwg.Chk.	HC	Approved	HT	
Scale at A1	1:2500	Project	255228	Status
		CAD file	J:\255228\report\env\elo\005\FIG 3-8.5a.dgn	PRE
Drawing No				Rev
				P2

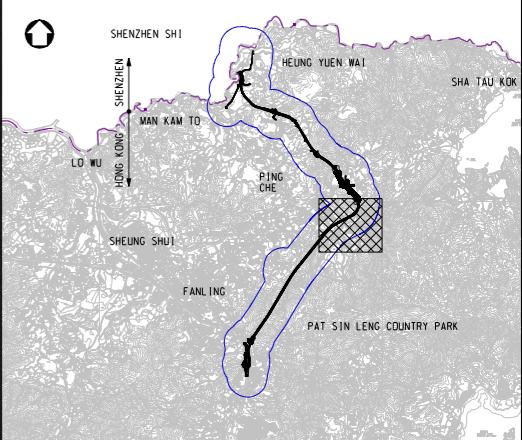
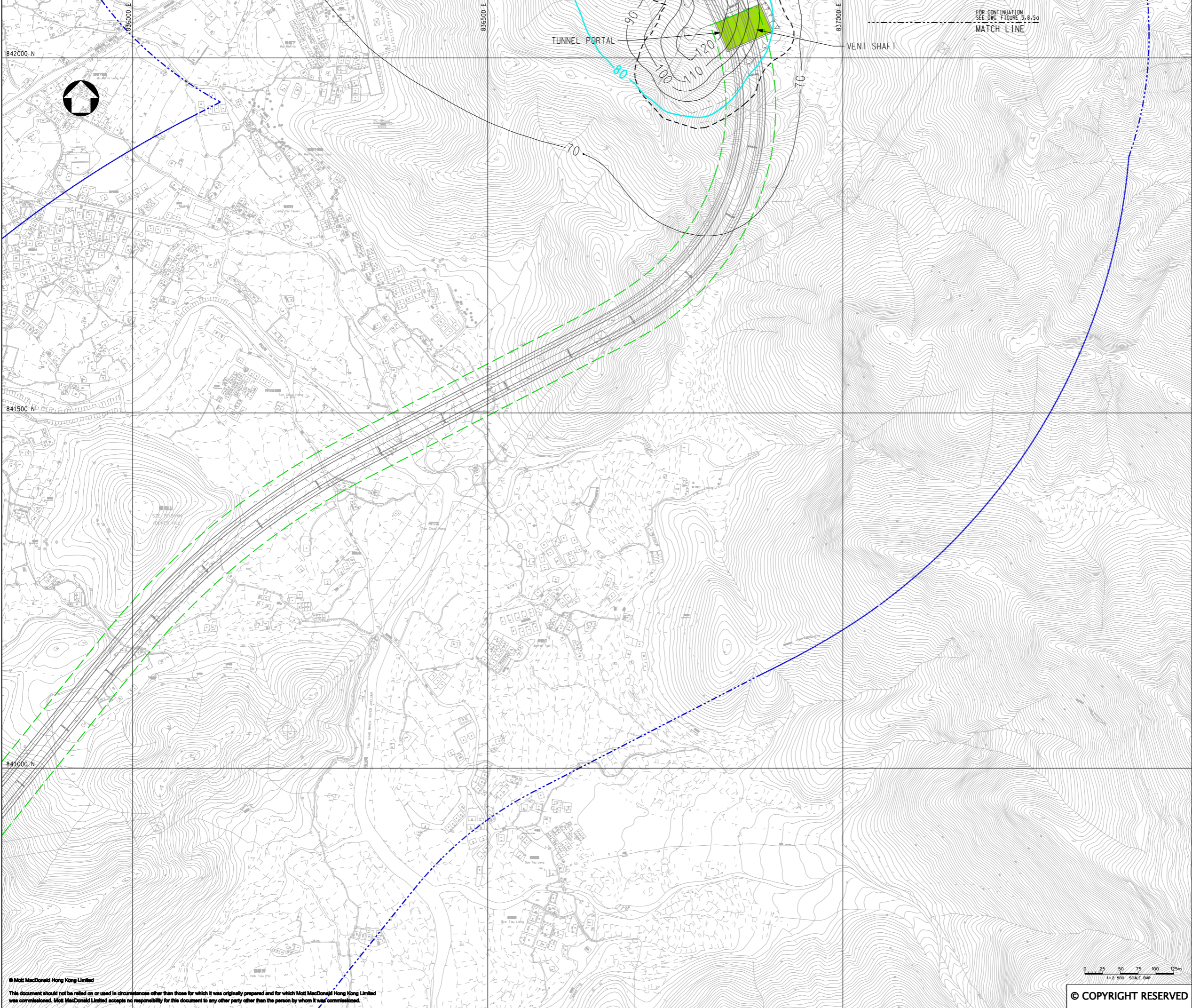
© Mott MacDonald Hong Kong Limited

This document should not be relied on or used in circumstances other than those for which it was originally prepared and for which Mott MacDonald Hong Kong Limited was commissioned. Mott MacDonald Limited accepts no responsibility for this document to any other party other than the person by whom it was commissioned.

MATCH LINE
FOR CONTINUATION
SEE DWG. FIGURE 3.8.6a

© COPYRIGHT RESERVED

FIGURE 3.8.5a



KEY PLAN
SCALE 1:100000

LEGEND:

- 500m ASSESSMENT AREA
- TENTATIVE WORKS AREA
- TUNNEL SECTION
- AQO CRITERIA
- PROPOSED TUNNEL VENTILATION BUILDING

P2	NOV 10	MMH	FINAL ISSUE	HC	HT
P1	SEP 10	MMH	FIRST ISSUE	HC	HT
Rev	Date	Drawn	Description	Ch'k'd	App'd

Mott MacDonald

20/F Two Landmark East
100 How Ming Street
Kowloon
Hong Kong
T +852 2828 6787
F +852 2827 1823
W www.mottmac.com.hk

Client

CEDD

**CIVIL ENGINEERING
AND DEVELOPMENT
DEPARTMENT**

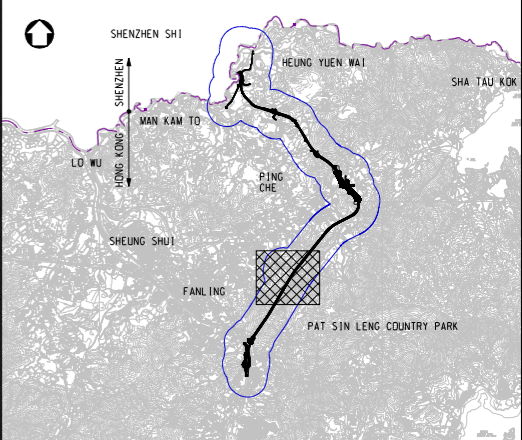
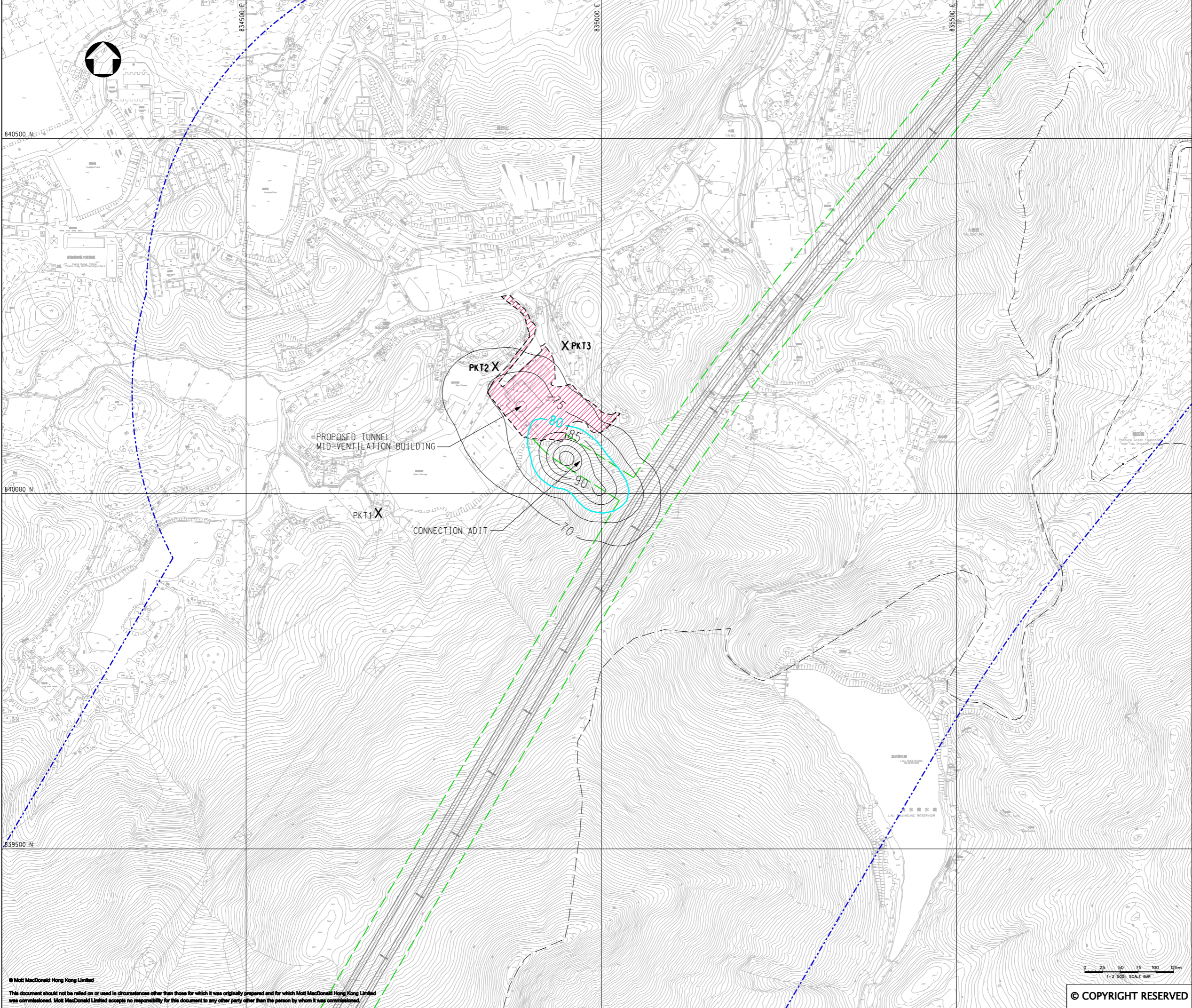
Project

AGREEMENT NO. CE45/2008(CE)
LIANTANG/HEUNG YUEN WAI BOUNDARY
CONTROL POINT AND ASSOCIATED WORKS

Title

CUMULATIVE RESULT - CONTOUR OF ANNUAL
TSP CONCENTRATION ($\mu\text{g}/\text{m}^3$) AT 1.5m
ABOVE GROUND DURING CONSTRUCTION PHASE
(UNMITIGATED) FOR LOI TUNG
(SHEET 2 OF 2)

Designed	HC	Eng.Chk.	EC	
Drawn	MING	Coordination	EC	
Dwg.Chk.	HC	Approved	HT	
Scale at A1	Project	255228	Status	
1:2500	CAD file	J:\255228\REPORT\ENV\ENV\A1\015\FIG 3-8.6a.dgn	PRE	
Drawing No	FIGURE 3.8.6a	Rev	P2	



KEY PLAN
SCALE 1:100000

LEGEND:

- 500m ASSESSMENT AREA
- TENTATIVE WORKS AREA
- TUNNEL SECTION
- AQO CRITERIA
- PROPOSED AREA FOR MID-VENTILATION BUILDING
- AIR SENSITIVE RECEIVERS COMPLIED WITH AQO CRITERIA.
- AIR SENSITIVE RECEIVERS EXCEEDED AQO CRITERIA.

P2	NOV 10	MMH	FINAL ISSUE	HC	HT
P1	SEP 10	MMH	FIRST ISSUE	HC	HT
Rev	Date	Drawn	Description	Ch'k'd	App'd

Mott MacDonald

20/F Two Landmark East
100 How Ming Street
Kowloon
Hong Kong
T +852 2828 6787
F +852 2827 1823
W www.mottmac.com.hk

Client

CEDD

**CIVIL ENGINEERING
AND DEVELOPMENT
DEPARTMENT**

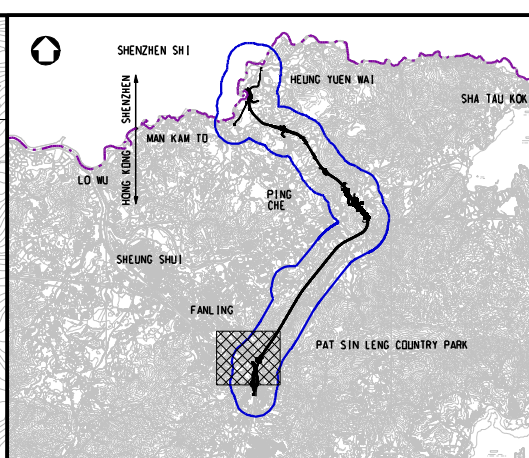
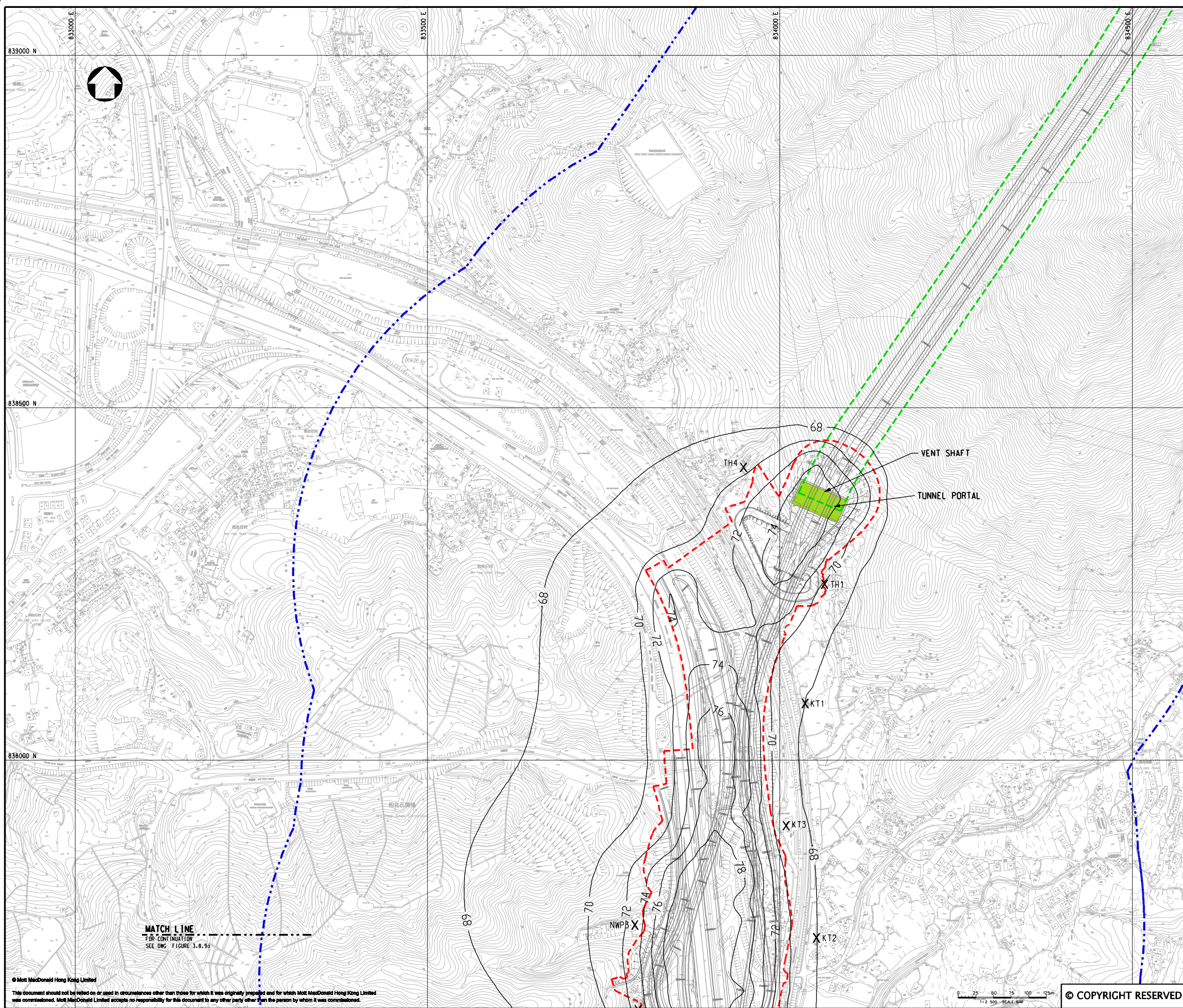
Project

AGREEMENT NO. CE45/2008(CE)
LIANTANG/HEUNG YUEN WAI BOUNDARY
CONTROL POINT AND ASSOCIATED WORKS

Title

CUMULATIVE RESULT - CONTOUR OF ANNUAL
TSP CONCENTRATION ($\mu\text{g}/\text{m}^3$) AT 1.5m
ABOVE GROUND DURING CONSTRUCTION PHASE
(UNMITIGATED) FOR PO KAK TSAI
(SHEET 1 OF 1)

Designed	HC	Eng.Chk.	EC
Drawn	MING	Coordination	EC
Dwg.Chk.	HC	Approved	HT
Scale at A1	Project	255228	Status
1:2500	CAD File	jc\255228\REPORT\ENV\ENV\FIG 3-8.7a.dgn	PRE
Drawing No	FIGURE 3.8.7a	Rev	P2



KEY PLAN
SCALE 1:100000

LEGEND:

500m ASSESSMENT AREA

TENTATIVE WORKS AREA


X

P1	NOV 10	MMH	FIRST ISSUE	HC	HT
Rev	Date	Drawn	Description	Ch'k'd	App'd



20/F Two Landmark East
100 How Ming Street
Kowloon
Hong Kong
T +852 2828 5757
F +852 2827 1823
W www.mottmac.com.hk

Client



CIVIL ENGINEERING
AND DEVELOPMENT
DEPARTMENT

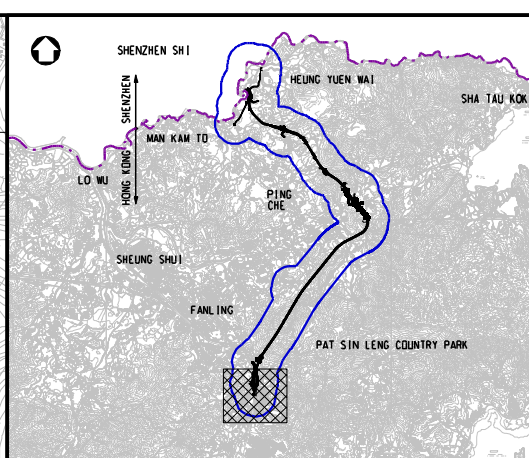
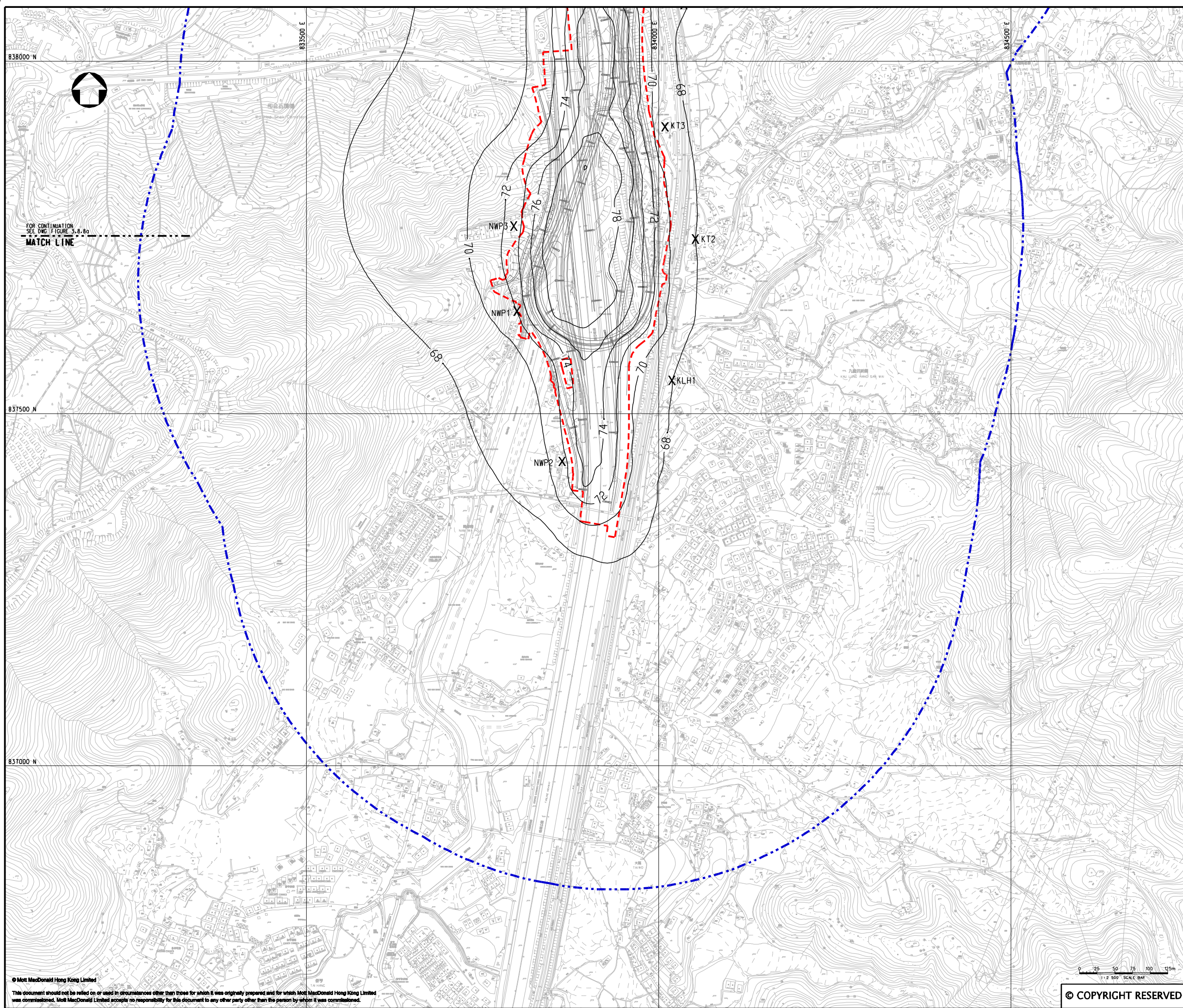
Project

AGREEMENT NO. CE45/2008(CE)
LIANTANG/HEUNG YUEN WAI BOUNDARY
CONTROL POINT AND ASSOCIATED WORKS

Title

CUMULATIVE RESULT - CONTOUR OF ANNUAL
TSP CONCENTRATION ($\mu\text{g}/\text{m}^3$) AT 1.5m
ABOVE GROUND DURING CONSTRUCTION PHASE
(UNMITIGATED) FOR FANLING (SHEET 1 OF 2)

Designed	HC	Eng.Chk.	EC	
Drawn	MING	Coordination	EC	
Dwg.Chk.	HC	Approved	HT	
Scale at A1	Project	255228	Status	PRE
1:2500	CAD file	h:\255228\report\env\velo\0105\01030\FIG 3-8.8a.dgn	Rev	P1
Drawing No	FIGURE 3.8.8a			



KEY PLAN
SCALE 1:100000

LEGEND:

- 500m ASSESSMENT AREA
- TENTATIVE WORKS AREA
- AIR SENSITIVE RECEIVERS COMPLIED WITH AOD CRITERIA.

P1	NOV 10	MMH	FIRST ISSUE	HC	HT
Rev	Date	Drawn	Description	Ch'k'd	App'd

Mott MacDonald

20/F Two Landmark East
100 How Ming Street
Kowloon, Hong Kong
T +852 2828 5757
F +852 2827 1823
W www.mottmac.com.hk

CEDD

**CIVIL ENGINEERING
AND DEVELOPMENT
DEPARTMENT**

Project
AGREEMENT NO. CE45/2008(CE)
LIANTANG/HEUNG YUEN WAI BOUNDARY
CONTROL POINT AND ASSOCIATED WORKS

Title
CUMULATIVE RESULT - CONTOUR OF ANNUAL
TSP CONCENTRATION ($\mu\text{g}/\text{m}^3$) AT 1.5m
ABOVE GROUND DURING CONSTRUCTION PHASE
(UNMITIGATED) FOR FANLING (SHEET 2 OF 2)

Designed	HC	Eng.Chk.	EC
Drawn	MING	Coordination	EC
Dwg.Chk.	HC	Approved	HT
Scale at A1	Project	255228	Status
1:2500	CAD file	Report\env\env\005\0030\FIG 3-8.9a.dgn	PRE
Drawing No	FIGURE 3.8.9a		Rev
			P1

© COPYRIGHT RESERVED