

KEY PLAN  
SCALE 1:100000

- LEGEND:
- BOUNDARY OF HKSAR
  - 500m ASSESSMENT AREA
  - TENTATIVE WORKS AREA
  - AQO CRITERIA
  - AIR SENSITIVE RECEIVERS COMPLIED WITH AQO CRITERIA.
  - AIR SENSITIVE RECEIVERS EXCEEDED AQO CRITERIA.

P2	NOV 10	MMH	FINAL ISSUE	HC	HT
P1	SEP 10	MMH	FIRST ISSUE	HC	HT
Rev	Date	Drawn	Description	Ch'k'd	App'd



20/F Two Landmark East  
100 How Ming Street  
Kowloon, Kowloon  
Hong Kong  
T +852 2828 6787  
F +852 2827 1823  
W www.mottmac.com.hk

Client

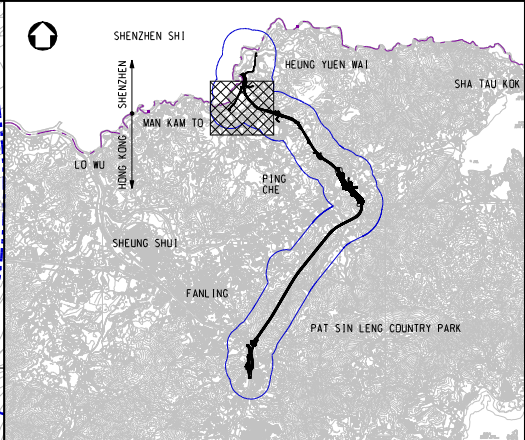
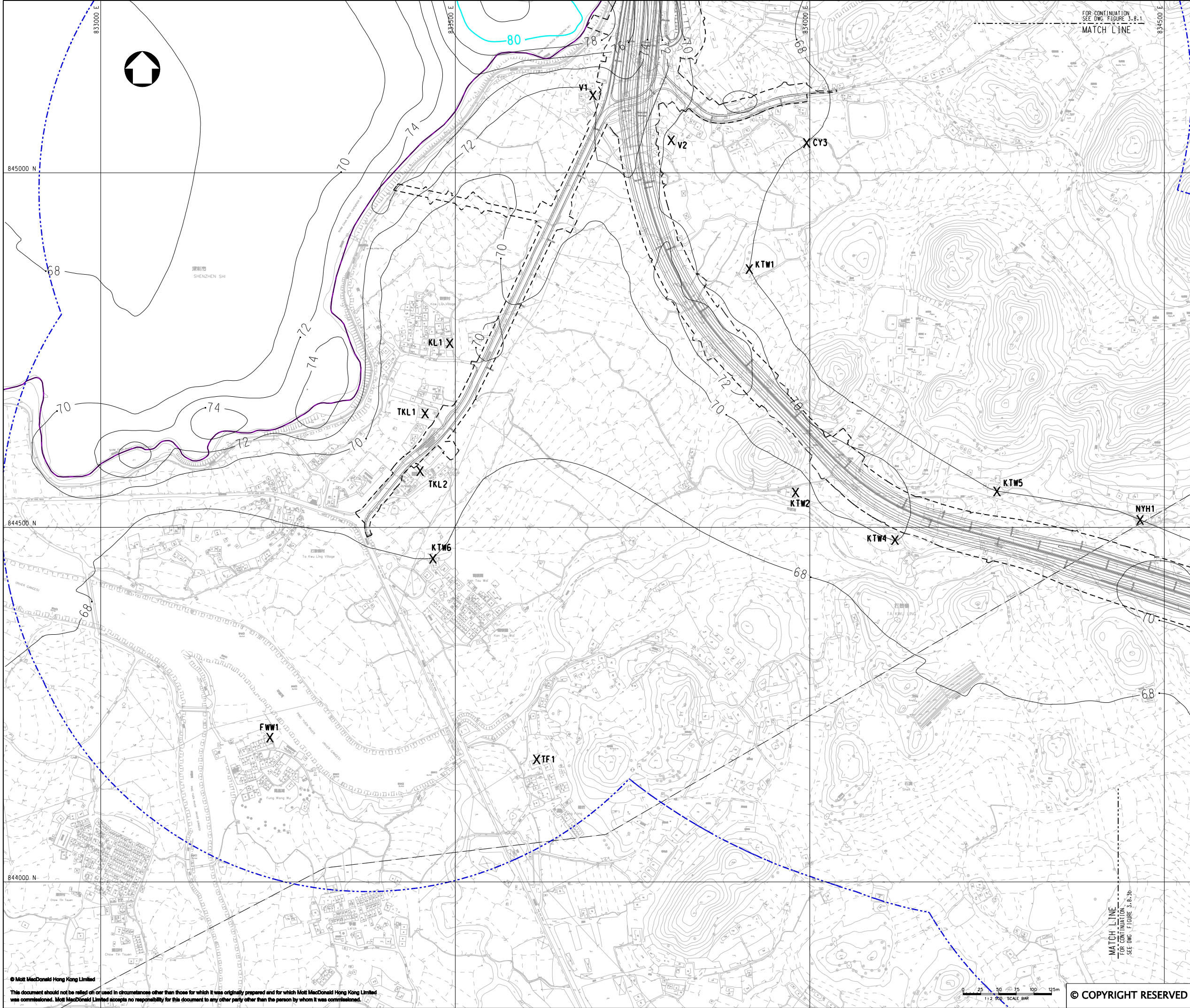
**CIVIL ENGINEERING  
AND DEVELOPMENT  
DEPARTMENT**

Project  
AGREEMENT NO. CE45/2008(CE)  
LIANTANG/HEUNG YUEN WAI BOUNDARY  
CONTROL POINT AND ASSOCIATED WORKS

Title  
CUMULATIVE RESULT - CONTOUR OF ANNUAL  
TSP CONCENTRATION ( $\mu\text{g}/\text{m}^3$ ) AT 1.5m ABOVE  
GROUND DURING CONSTRUCTION PHASE (MITIGATED)  
FOR NORTHERN SECTION (SHEET 1 OF 4)

Designed	HC	Eng.Chk.	EC	
Drawn	MING	Coordination	EC	
Dwg.Chk.	HC	Approved	HT	
Scale at A1	Project	255228	Status	
1:2500	CAD File	jc255228\REPORT\ENV\ENV\A1\015\FIG 3-8.1b.dgn	PRE	
Drawing No	FIGURE 3.8.1b	Rev	P2	





KEY PLAN  
SCALE 1:100000

LEGEND:

- BOUNDARY OF HKSAR
- 500m ASSESSMENT AREA
- TENTATIVE WORKS AREA
- AQO CRITERIA
- AIR SENSITIVE RECEIVERS COMPLIED WITH AQO CRITERIA.
- AIR SENSITIVE RECEIVERS EXCEEDED AQO CRITERIA.

P2	NOV 10	MMH	FINAL ISSUE	HC	HT
P1	OCT 10	MMH	FIRST ISSUE	HC	HT
Rev	Date	Drawn	Description	Ch'k'd	App'd

**Mott MacDonald**

20/F Two Landmark East  
100 How Ming Street  
Kowloon, Kowloon  
Hong Kong  
T +852 2828 6787  
F +852 2827 1823  
W www.mottmac.com.hk

Client

**CEDD**

**CIVIL ENGINEERING  
AND DEVELOPMENT  
DEPARTMENT**

Project

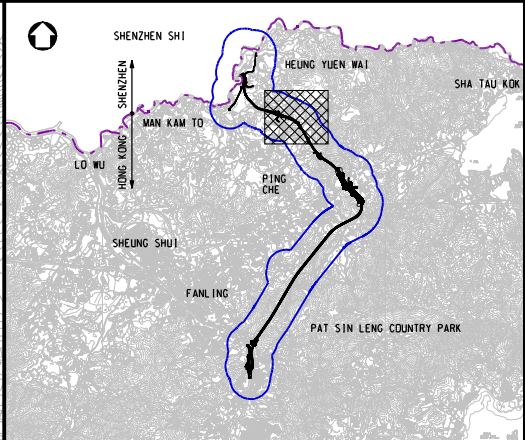
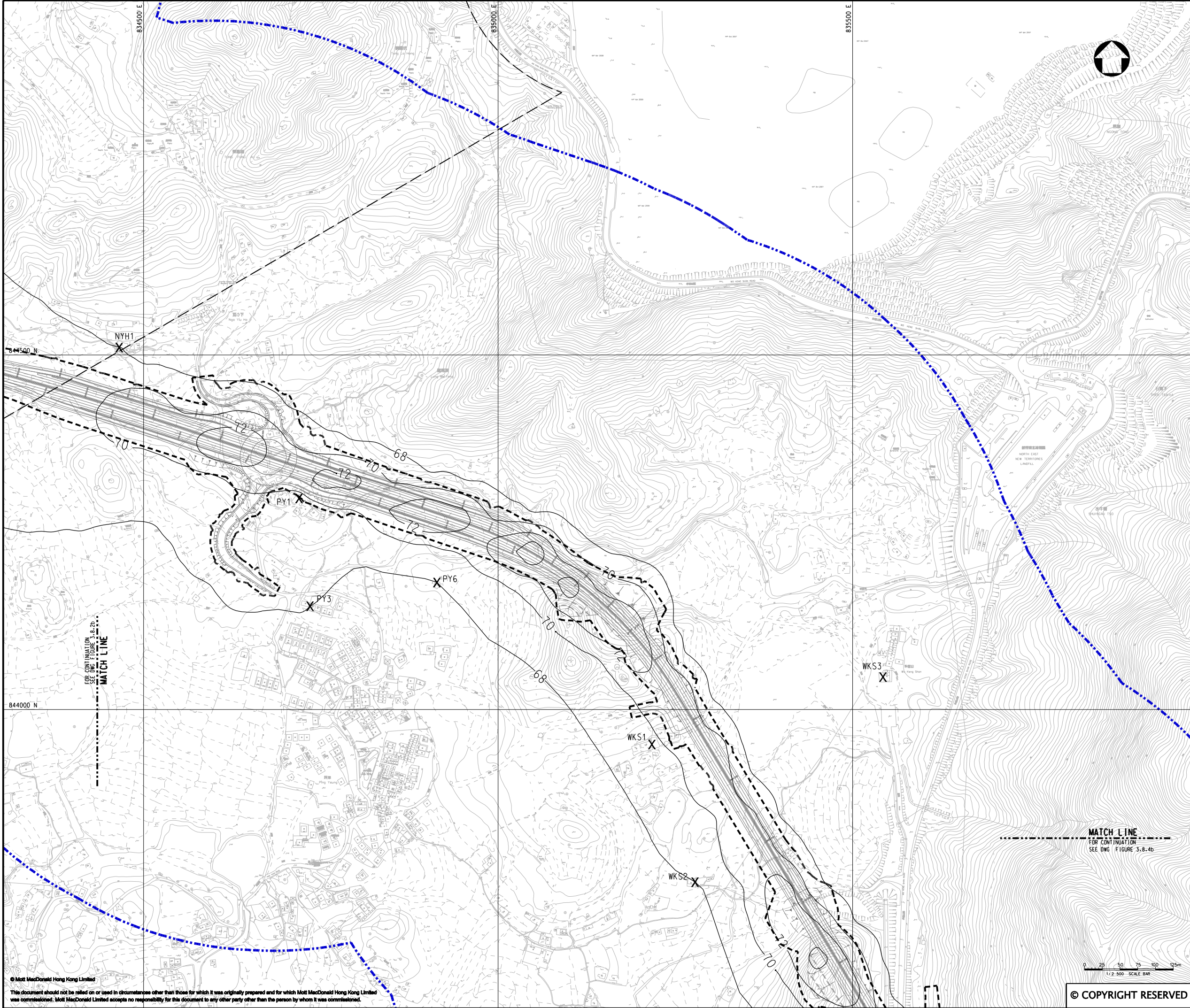
AGREEMENT NO. CE45/2008(CE)  
LIANTANG/HEUNG YUEN WAI BOUNDARY  
CONTROL POINT AND ASSOCIATED WORKS

Title

CUMULATIVE RESULT - CONTOUR OF ANNUAL  
TSP CONCENTRATION ( $\mu\text{g}/\text{m}^3$ ) AT 1.5m ABOVE  
GROUND DURING CONSTRUCTION PHASE (MITIGATED)  
FOR NORTHERN SECTION (SHEET 2 OF 4)

Designed	HC	Eng.Chk.	EC	
Drawn	MING	Coordination	EC	
Dwg.Chk.	HC	Approved	HT	
Scale at A1	Project	255228	Status	
1:2500	CAD File	jc255228\REPORT\ENV\ENV\A1\015\FIG 3-8.2b.dgn	PRE	
Drawing No	FIGURE 3.8.2b	Rev	P2	





KEY PLAN  
SCALE 1:100000

LEGEND:

- 500m ASSESSMENT AREA
- TENTATIVE WORKS AREA
- AIR SENSITIVE RECEIVERS COMPLIED WITH AOD CRITERIA.

P1	SEP 10	MMH	FIRST ISSUE	HC	HT
Rev	Date	Drawn	Description	Ch'k'd	App'd

**Mott MacDonald**

20/F Two Landmark East  
100 How Ming Street  
Kowloon, Kowloon  
Hong Kong  
T +852 2828 6787  
F +852 2827 1823  
W www.mottmac.com.hk

Client

**CEDD**

CIVIL ENGINEERING  
AND DEVELOPMENT  
DEPARTMENT

Project

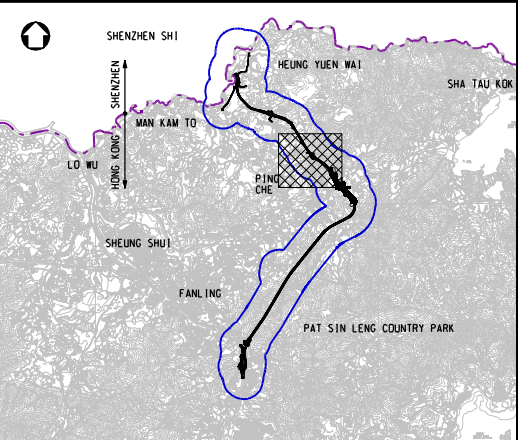
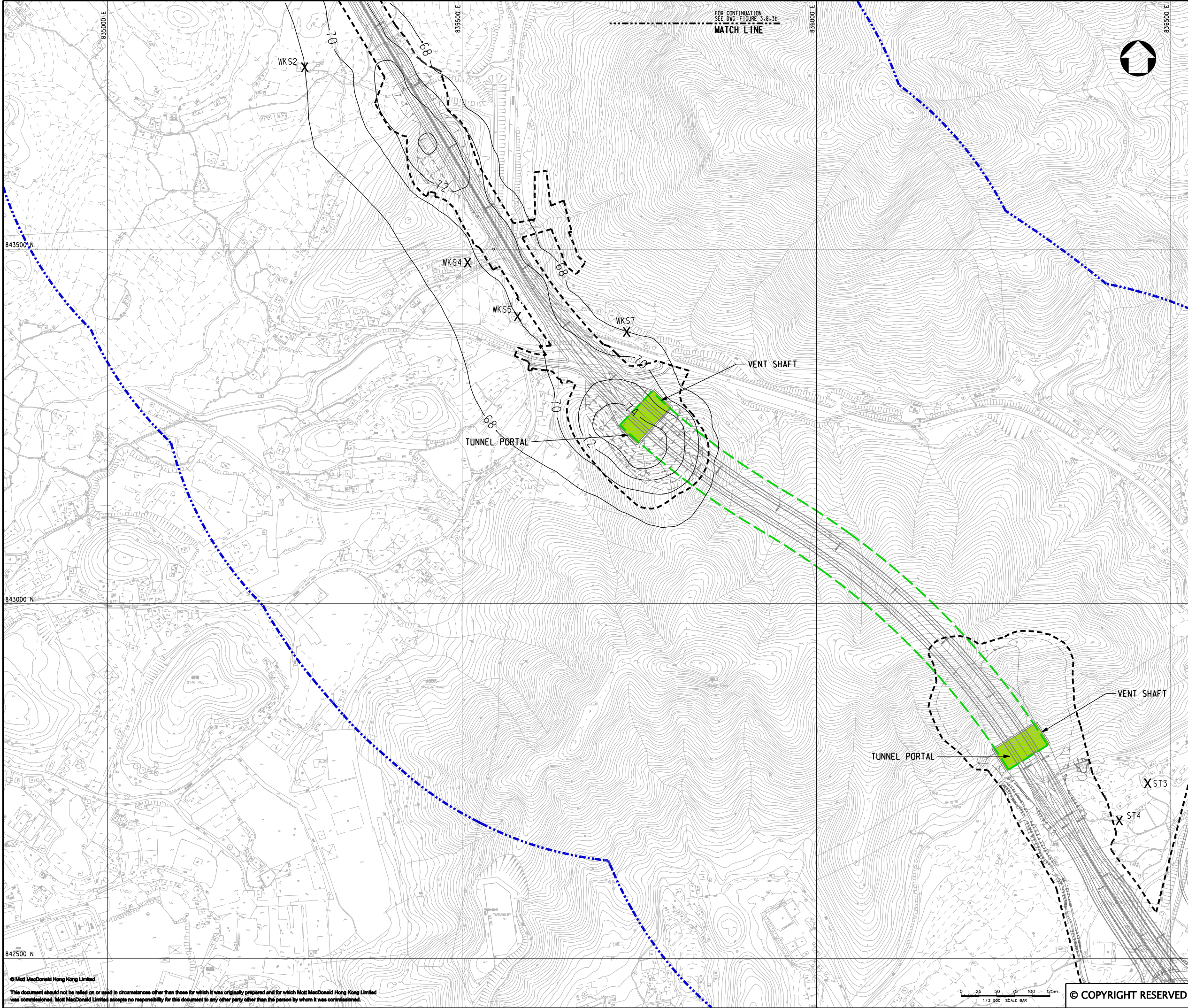
AGREEMENT NO. CE45/2008(CE)  
LIANTANG/HEUNG YUEN WAI BOUNDARY  
CONTROL POINT AND ASSOCIATED WORKS

Title

CUMULATIVE RESULT - CONTOUR OF ANNUAL  
TSP CONCENTRATION ( $\mu\text{g}/\text{m}^3$ ) AT 1.5m  
ABOVE GROUND DURING CONSTRUCTION PHASE  
(MITIGATED) FOR NORTHERN SECTION  
(SHEET 3 OF 4)

Designed	HC	Eng.Chk.	EC
Drawn	MING	Coordination	EC
Dwg.Chk.	HC	Approved	HT
Scale at A1	Project	255228	Status
1:2500	CAD file	J:\255228\report\env\elo\005\FIG 3-8.3b.dgn	PRE
Drawing No	FIGURE 3.8.3b	Rev	P1





KEY PLAN  
SCALE 1:100000

- LEGEND:
- 500m ASSESSMENT AREA
  - TENTATIVE WORKS AREA
  - TUNNEL SECTION
  - PROPOSED TUNNEL VENTILATION BUILDING
  - AIR SENSITIVE RECEIVERS COMPLIED WITH AOD CRITERIA.

P1	SEP 10	MMH	FIRST ISSUE	HC	HT
Rev	Date	Drawn	Description	Ch'k'd	App'd



20/F Two Landmark East  
100 How Ming Street  
Kowloon Tong, Kowloon  
Hong Kong  
T +852 2828 6787  
F +852 2827 1823  
W www.mottmac.com.hk

Client

 **CIVIL ENGINEERING  
AND DEVELOPMENT  
DEPARTMENT**

Project

AGREEMENT NO. CE45/2008(CE)  
LIANTANG/HEUNG YUEN WAI BOUNDARY  
CONTROL POINT AND ASSOCIATED WORKS

Title

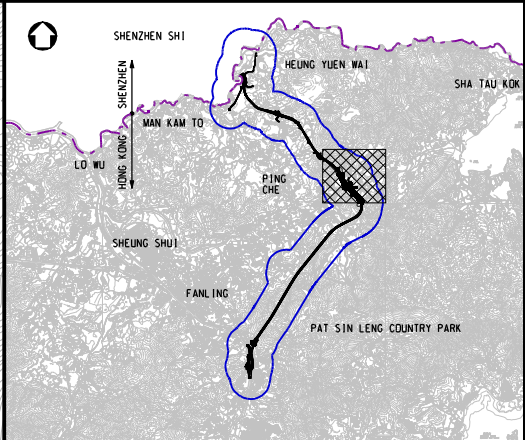
CUMULATIVE RESULT - CONTOUR OF ANNUAL  
TSP CONCENTRATION ( $\mu\text{g}/\text{m}^3$ ) AT 1.5m  
ABOVE GROUND DURING CONSTRUCTION PHASE  
(MITIGATED) FOR NORTHERN SECTION  
(SHEET 4 OF 4)

Designed	HC	Eng.Chk.	EC
Drawn	MING	Coordination	EC
Dwg.Chk.	HC	Approved	HT

Scale at A1	Project	Status
1:2500	255228	PRE
CAD file	J:\255228\report\env\elo\005\FIG 3-8-4b.dgn	Rev

Drawing No	FIGURE 3.8.4b	P1
------------	---------------	----





**KEY PLAN**  
SCALE 1:100000

**LEGEND:**

- 500m ASSESSMENT AREA
- TENTATIVE WORKS AREA
- TUNNEL SECTION
- PROPOSED TUNNEL VENTILATION BUILDING
- AIR SENSITIVE RECEIVERS COMPLIED WITH AQO CRITERIA.

P1	SEP 10	MMH	FIRST ISSUE	HC	HT
Rev	Date	Drawn	Description	Ch'k'd	App'd

**Mott MacDonald**

20/F Two Landmark East  
100 How Ming Street  
Kowloon, Kowloon  
Hong Kong  
T +852 2828 6787  
F +852 2827 1823  
W www.mottmac.com.hk

**CEDD**

**CIVIL ENGINEERING  
AND DEVELOPMENT  
DEPARTMENT**

**Project**  
AGREEMENT NO. CE45/2008(CE)  
LIANTANG/HEUNG YUEN WAI BOUNDARY  
CONTROL POINT AND ASSOCIATED WORKS

**Title**  
CUMULATIVE RESULT - CONTOUR OF ANNUAL  
TSP CONCENTRATION ( $\mu\text{g}/\text{m}^3$ ) AT 1.5m  
ABOVE GROUND DURING CONSTRUCTION PHASE  
(MITIGATED) FOR LOI TUNG  
(SHEET 1 OF 2)

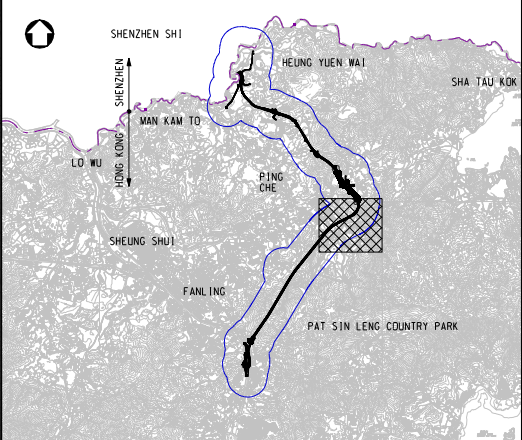
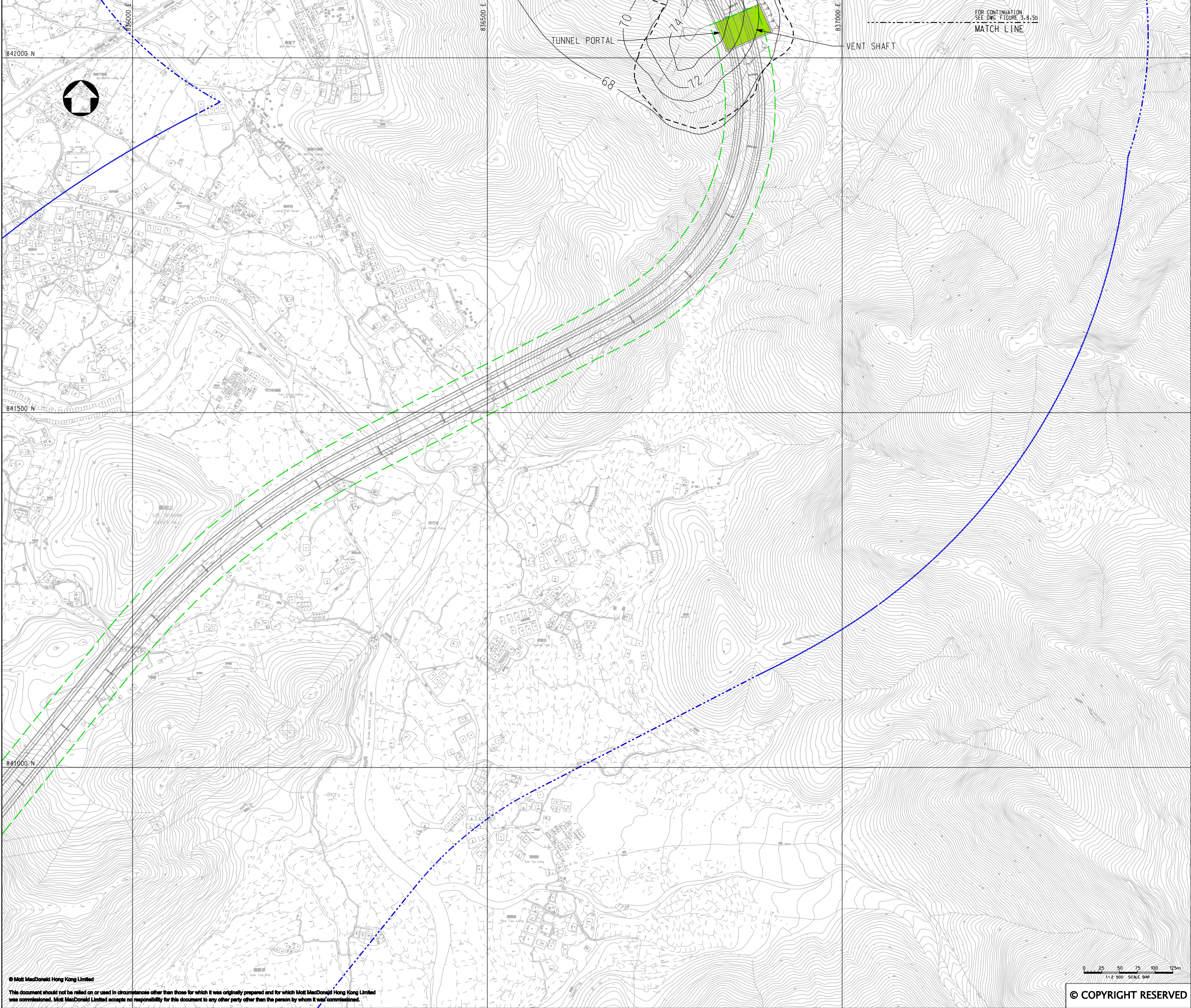
Designed	HC	Eng.Chk.	EC
Drawn	MING	Coordination	EC
Dwg.Chk.	HC	Approved	HT
Scale at A1	1:2500	Project	255228
Drawing No	FIGURE 3.8.5b	Status	PRE
		Rev	P1

© Mott MacDonald Hong Kong Limited  
This document should not be relied on or used in circumstances other than those for which it was originally prepared and for which Mott MacDonald Hong Kong Limited was commissioned. Mott MacDonald Limited accepts no responsibility for this document to any other party other than the person by whom it was commissioned.

**MATCH LINE**  
FOR CONTINUATION  
SEE DWG. FIGURE 3.8.6b

© COPYRIGHT RESERVED





KEY PLAN  
SCALE 1:100000

LEGEND:

- 500m ASSESSMENT AREA
- TENTATIVE WORKS AREA
- TUNNEL SECTION
- PROPOSED TUNNEL VENTILATION BUILDING

P1	SEP 10	MMH	FIRST ISSUE	HC	HT
Rev	Date	Drawn	Description	Ch'k'd	App'd

**Mott MacDonald**

20/F Two Landmark East  
100 How Ming Street  
Kowloon  
Hong Kong  
T +852 2828 6787  
F +852 2827 1823  
W www.mottmac.com.hk

Client

**CEDD**

**CIVIL ENGINEERING  
AND DEVELOPMENT  
DEPARTMENT**

Project

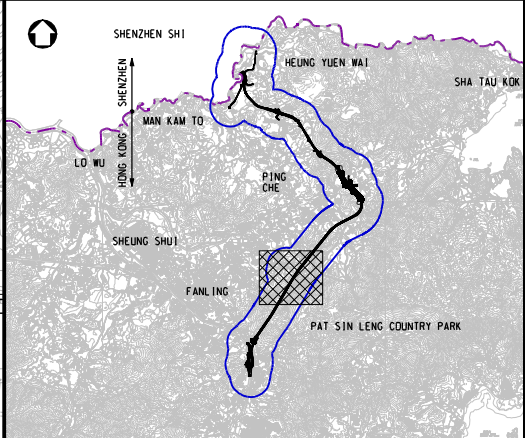
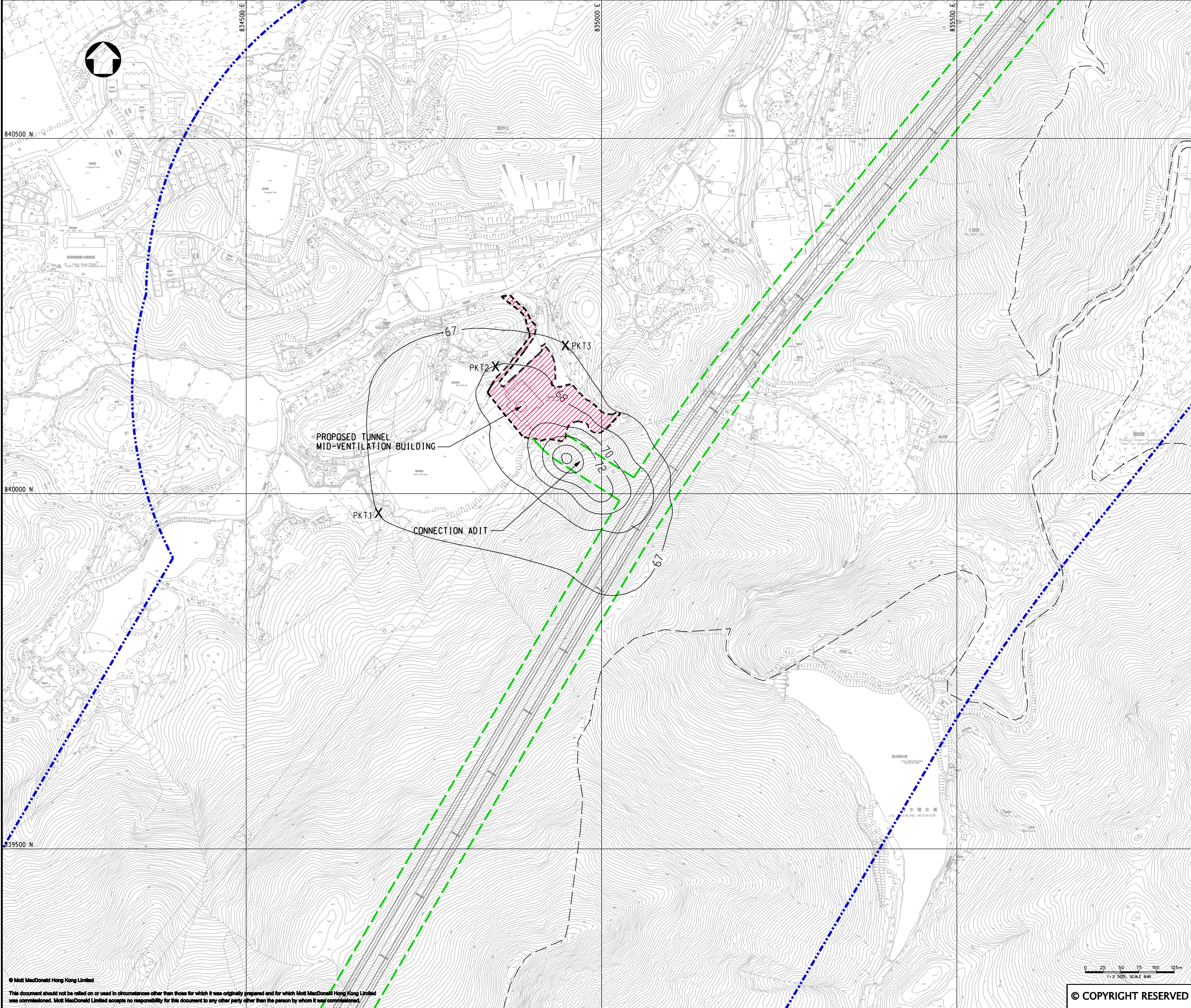
AGREEMENT NO. CE45/2008(CE)  
LIANTANG/HEUNG YUEN WAI BOUNDARY  
CONTROL POINT AND ASSOCIATED WORKS

Title

CUMULATIVE RESULT - CONTOUR OF ANNUAL  
TSP CONCENTRATION ( $\mu\text{g}/\text{m}^3$ ) AT 1.5m  
ABOVE GROUND DURING CONSTRUCTION PHASE  
(MITIGATED) FOR LOI TUNG  
(SHEET 2 OF 2)

Designed	HC	Eng.Chk.	EC	
Drawn	MING	Coordination	EC	
Dwg.Chk.	HC	Approved	HT	
Scale at A1	Project	255228	Status	
1:2500	CAD File	jc\255228\REPORT\ENV\ENV\A1\015\FIG 3-8.6b.dgn	PRE	
Drawing No	FIGURE 3.8.6b	Rev	P1	





KEY PLAN  
SCALE 1:100000

LEGEND:

- 500m ASSESSMENT AREA
- TENTATIVE WORKS AREA
- TUNNEL SECTION
- PROPOSED AREA FOR MID-VENTILATION BUILDING
- AIR SENSITIVE RECEIVERS COMPLIED WITH ADO CRITERIA.

P1	SEP 10	MMH	FIRST ISSUE	HC	HT
Rev	Date	Drawn	Description	Ch'k'd	App'd

**Mott MacDonald**

20/F Two Landmark East  
100 How Ming Street  
Kowloon  
Hong Kong  
T +852 2828 6787  
F +852 2827 1823  
W www.mottmac.com.hk

Client

**CEDD**

CIVIL ENGINEERING  
AND DEVELOPMENT  
DEPARTMENT

Project

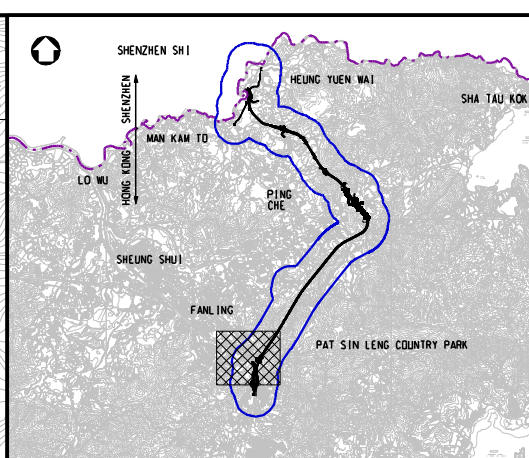
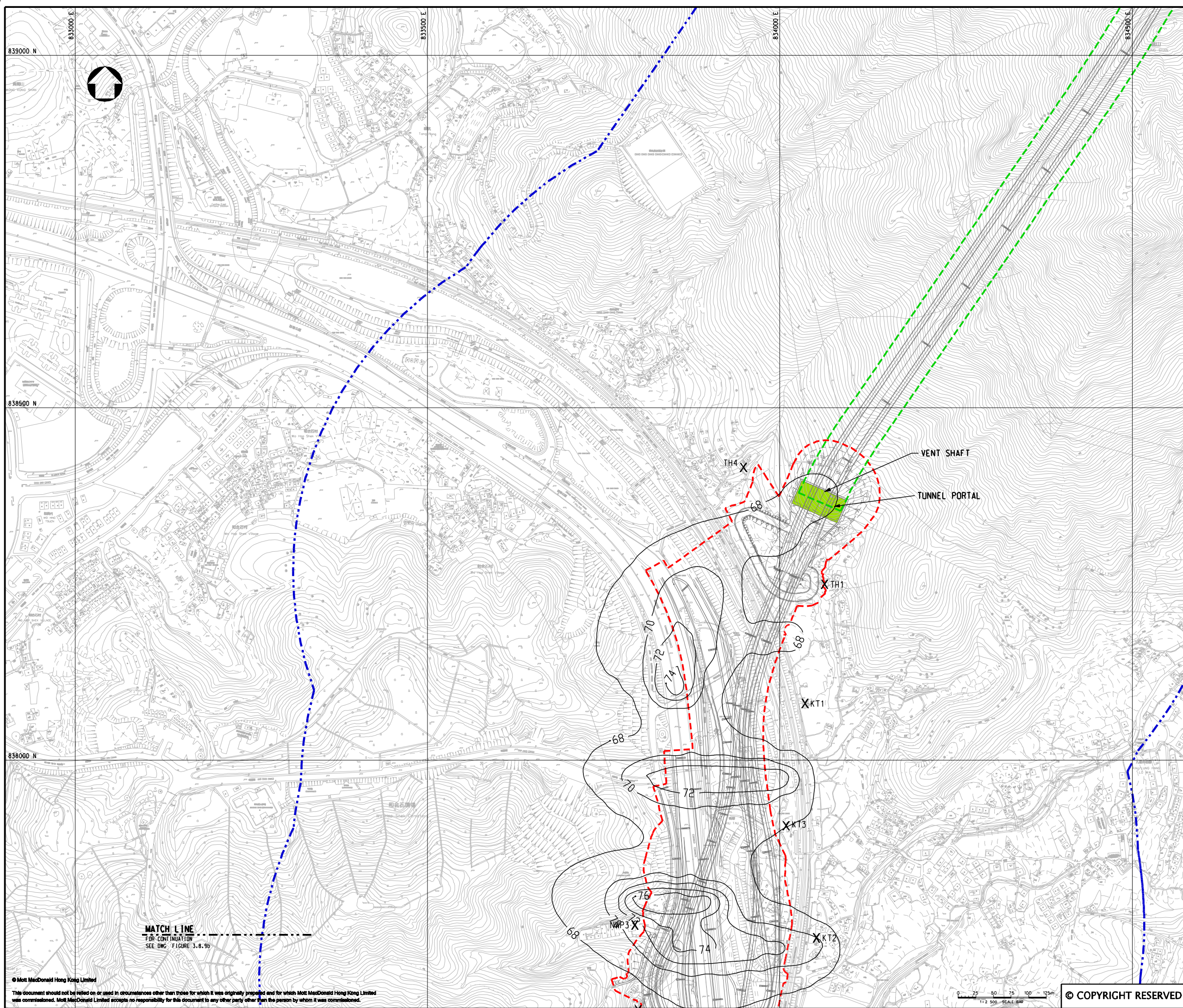
AGREEMENT NO. CE45/2008(CE)  
LIANTANG/HEUNG YUEN WAI BOUNDARY  
CONTROL POINT AND ASSOCIATED WORKS

Title

CUMULATIVE RESULT - CONTOUR OF ANNUAL  
TSP CONCENTRATION ( $\mu\text{g}/\text{m}^3$ ) AT 1.5m  
ABOVE GROUND DURING CONSTRUCTION PHASE  
(MITIGATED) FOR PO KAK TSAI  
(SHEET 1 OF 1)

Designed	HC	Eng.Chk.	EC	
Drawn	MING	Coordination	EC	
Dwg.Chk.	HC	Approved	HT	
Scale at A1	1:2500	Project	255228	Status
		CAD file	J:\255228\report\env\elo\05\FIG 3-8.7b.dgn	PRE
Drawing No				Rev
				P1





KEY PLAN  
SCALE 1:100000

LEGEND:

500m ASSESSMENT AREA

TENTATIVE WORKS AREA

X

P1	NOV 10	MMH	FIRST ISSUE	HC	HT
Rev	Date	Drawn	Description	Ch'k'd	App'd



20/F Two Landmark East  
100 How Ming Street  
Kowloon  
Hong Kong  
T +852 2828 5757  
F +852 2827 1823  
W www.mottmac.com.hk

Client



CIVIL ENGINEERING  
AND DEVELOPMENT  
DEPARTMENT

Project

AGREEMENT NO. CE45/2008(CE)  
LIANTANG/HEUNG YUEN WAI BOUNDARY  
CONTROL POINT AND ASSOCIATED WORKS

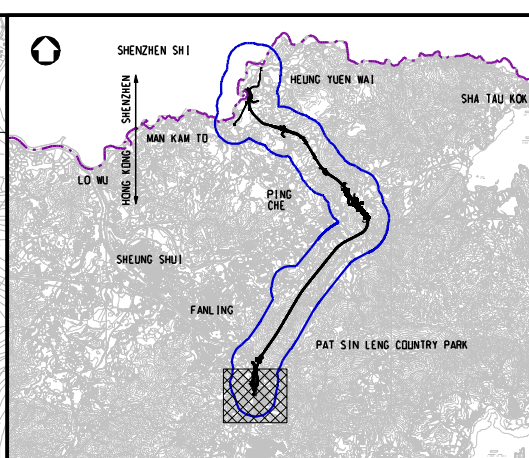
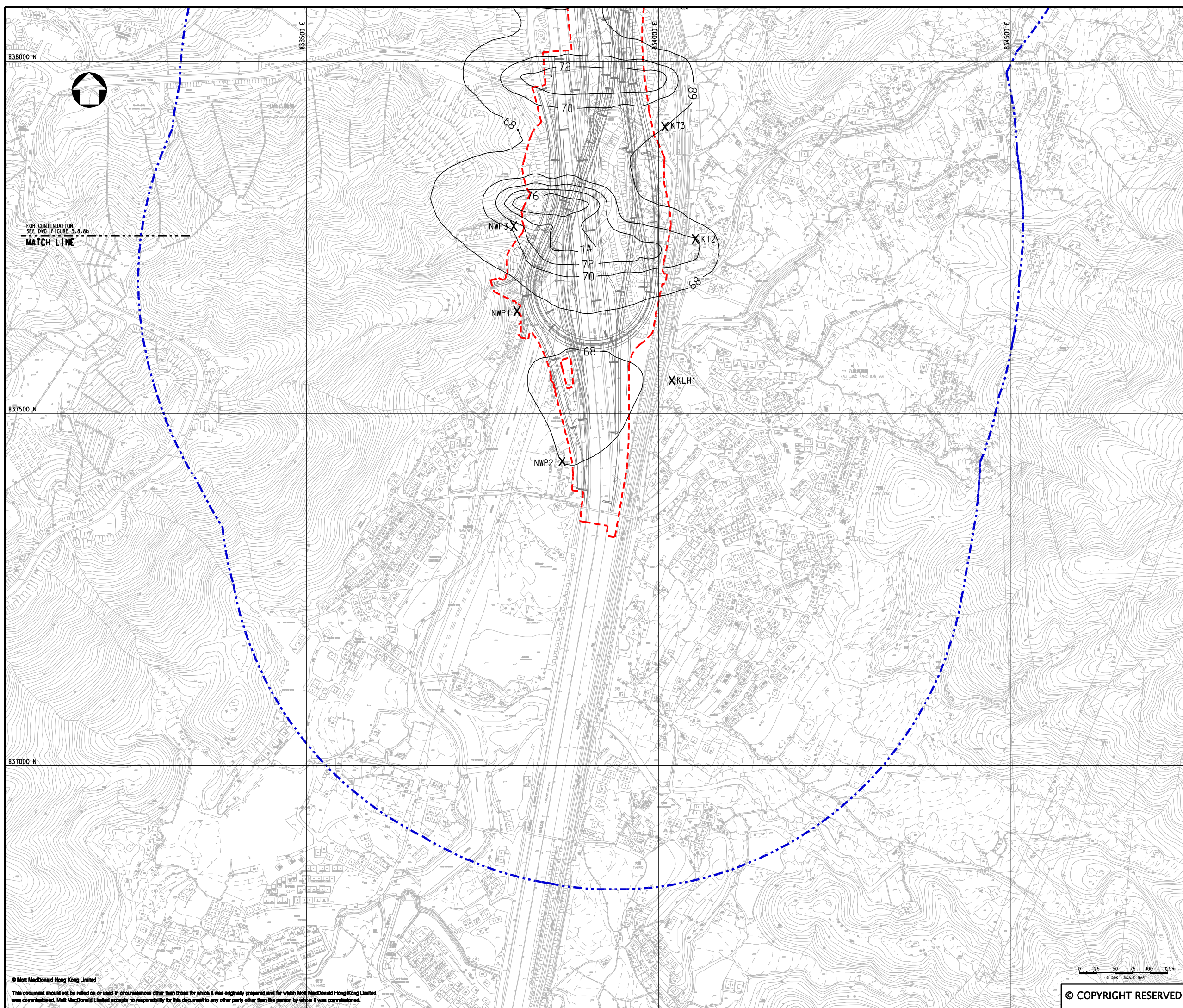
Title

CUMULATIVE RESULT - CONTOUR OF ANNUAL  
TSP CONCENTRATION ( $\mu\text{g}/\text{m}^3$ ) AT 1.5m  
ABOVE GROUND DURING CONSTRUCTION PHASE  
(MITIGATED) FOR FANLING (SHEET 1 OF 2)

Designed	HC		Eng.Chk.	EC	
Drawn	MING		Coordination	EC	
Dwg.Chk.	HC		Approved	HT	
Scale at A1	1:2500	Project	255228	Status	PRE
CAD file	h:\255228\report\env\velo\0105\01030\FIG 3-8.8b.dgn				Rev
Drawing No	FIGURE 3.8.8b				P1

© COPYRIGHT RESERVED





KEY PLAN  
SCALE 1:100000

LEGEND:

500m ASSESSMENT AREA

TENTATIVE WORKS AREA

X

AIR SENSITIVE RECEIVERS COMPLIED WITH AQO CRITERIA.


P1	NOV 10	MMH	FIRST ISSUE	HC	HT
Rev	Date	Drawn	Description	Ch'k'd	App'd



Mott MacDonald

20/F Two Landmark East  
100 How Ming Street  
Kowloon, Kowloon  
Hong Kong  
T +852 2828 5757  
F +852 2827 1823  
W www.mottmac.com.hk

Client



CIVIL ENGINEERING  
AND DEVELOPMENT  
DEPARTMENT

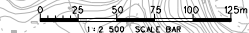
Project

AGREEMENT NO. CE45/2008(CE)  
LIANTANG/HEUNG YUEN WAI BOUNDARY  
CONTROL POINT AND ASSOCIATED WORKS

Title

CUMULATIVE RESULT - CONTOUR OF ANNUAL  
TSP CONCENTRATION ( $\mu\text{g}/\text{m}^3$ ) AT 1.5m  
ABOVE GROUND DURING CONSTRUCTION PHASE  
(MITIGATED) FOR FANLING (SHEET 2 OF 2)

Designed	HC		Eng.Chk.	EC	
Drawn	MING		Coordination	EC	
Dwg.Chk.	HC		Approved	HT	
Scale at A1	Project	255228	Status	PRE	
1:2500	CAD file	h:\255228\report\env\velo\0105\01030\FIG 3-8.9b.dgn			
Drawing No	FIGURE 3.8.9b			Rev	P1



© COPYRIGHT RESERVED