



833500 E

834000 E

834500 E

846500 N

846000 N

845500 N

© Mott MacDonald Hong Kong Limited  
This document should not be relied on or used in circumstances other than those for which it was originally prepared and for which Mott MacDonald Hong Kong Limited was commissioned. Mott MacDonald Limited accepts no responsibility for this document to any other party other than the person by whom it was commissioned.

深圳市 SHENZHEN SHI

深圳市 SHENZHEN SHI

深圳市 SHENZHEN SHI

深圳市 SHENZHEN SHI

SHENZHEN BCP

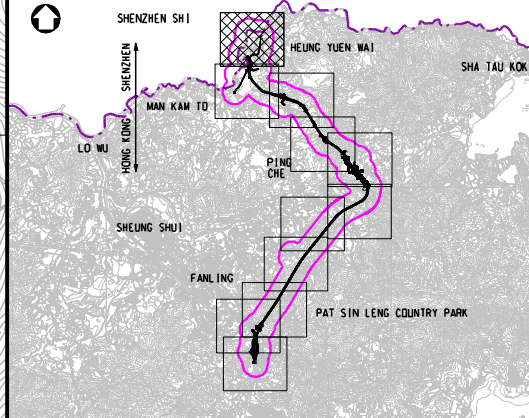
白虎山  
PAK FU SHAN

松園下  
TSUNG YUEN HA

竹園  
CHUK YUEN

BOUNDARY CROSSING POINT

TYH



KEY PLAN  
SCALE 1:100000

- LEGEND:
- BOUNDARY OF HKSAR
  - 300m ASSESSMENT AREA
  - TENTATIVE WORKS AREA
  - NOISE SENSITIVE RECEIVER (AIR-BORNE)
  - NOISE SENSITIVE RECEIVER (GROUND-BORNE)
  - FACADE FACING
  - BASELINE MONITORING LOCATION

REMARK:  
LAYOUT OF HONG KONG BCP IS TENTATIVE AND SUBJECT TO REVIEW

P2	AUG 10	MING	GENERAL REVISION	FN	HT
P1	MAY 10	MING	FIRST ISSUE	FN	HT
Rev	Date	Drawn	Description	Ch'k'd	App'd

20/F Two Landmark East  
100 How Ming Street  
Kowloon, Kowloon  
Hong Kong  
T +852 2828 8787  
F +852 2827 1823  
W www.motmac.com.hk

Client

CIVIL ENGINEERING  
AND DEVELOPMENT  
DEPARTMENT

Project  
AGREEMENT NO. CE45/2008(CE)  
LIANTANG/HEUNG YUEN WAI BOUNDARY  
CONTROL POINT AND ASSOCIATED WORKS

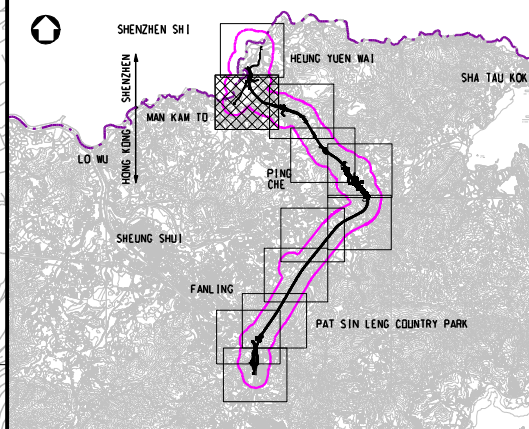
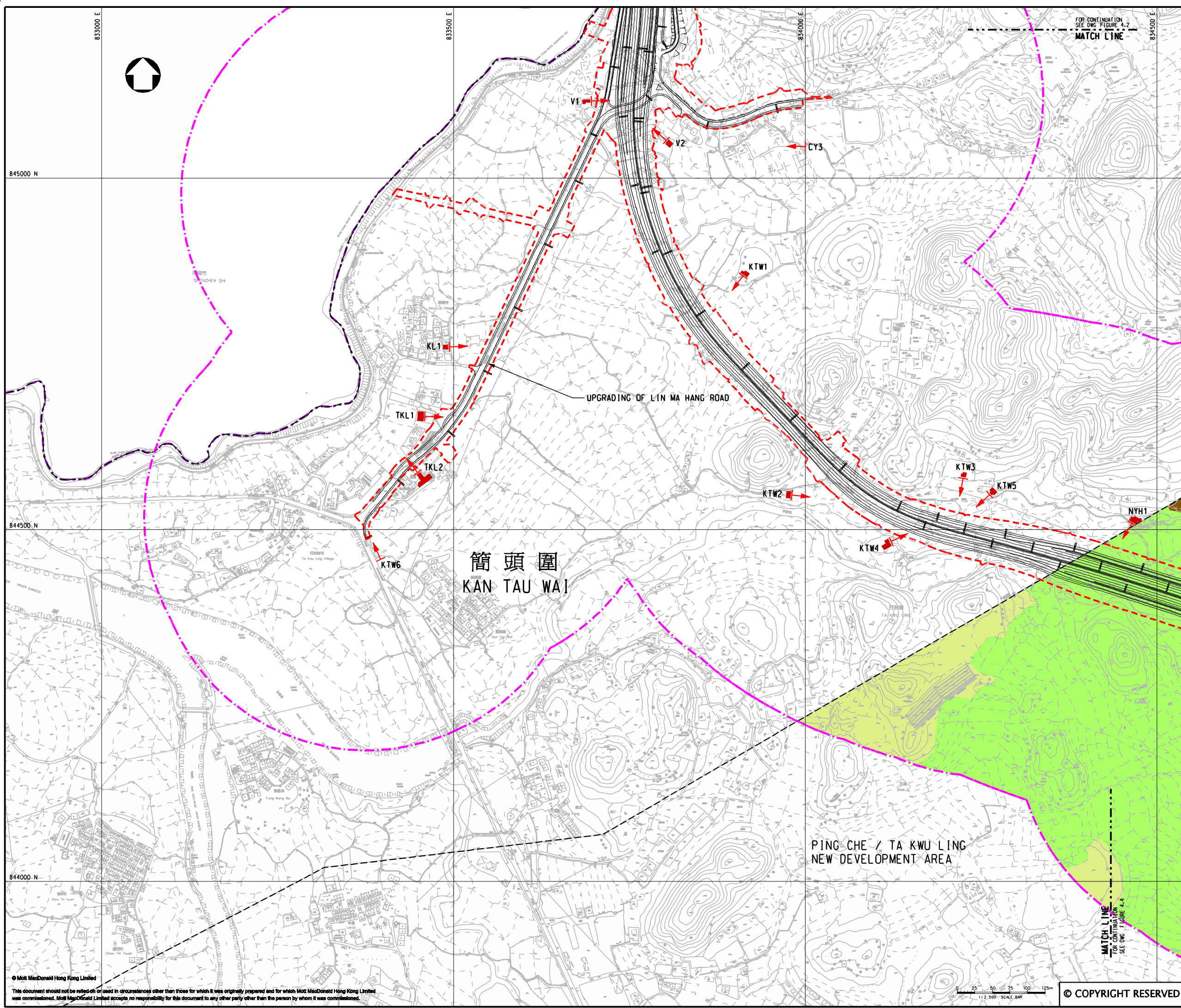
Title  
REPRESENTATIVE NOISE SENSITIVE RECEIVERS  
(SHEET 1 OF 11)

Designed	SC	Eng.Chk.	EC	
Drawn	MING	Coordination	EC	
Dwg.Chk.	SC	Approved	HT	
Scale at A1	Project	Status		
1:2500	255228	PRE		
Drawing No	CAD file	Rev		
FIGURE 4.2	\\report\env\env\1008\6\FIG 4-2.dgn	P2		

1:2500 SCALE BAR

MATCH LINE  
FOR CONTINUATION  
SEE DWG FIGURE 4.3

© COPYRIGHT RESERVED



**KEY PLAN**  
SCALE 1:100000

**LEGEND:**

- BOUNDARY OF HKSAR
- 300m ASSESSMENT AREA
- TENTATIVE WORKS AREA
- ▶ NOISE SENSITIVE RECEIVER (AIR-BORNE)
- ▨ NOISE SENSITIVE RECEIVER (GROUND-BORNE)
- ▶ FACADE FACING
- AGRICULTURE
- GREEN BELT
- VILLAGE TYPE DEVELOPMENT
- GOVERNMENT, INSTITUTION OR COMMUNITY
- OPEN STORAGE
- RECREATION
- COMPREHENSIVE DEVELOPMENT AREA
- OTHER SPECIFIED USES
- INDUSTRIAL (GROUP D)

Rev	Date	Drawn	Description	Ch'k'd	App'd
P3	AUG 10	MING	GENERAL REVISION	FN	HT
P2	JUN 10	MING	GENERAL REVISION	FN	HT
P1	MAY 10	MING	FIRST ISSUE	FN	HT

20/F Two Landmark East  
100 How Ming Street  
Kowloon Tong, Kowloon  
Hong Kong  
☎ +852 2828 8787  
☎ +852 2827 1823  
www.mottmac.com.hk

Client

**CIVIL ENGINEERING AND DEVELOPMENT DEPARTMENT**

Project

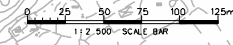
AGREEMENT NO. CE45/2008(CE)  
LIANTANG/HEUNG YUEN WAI BOUNDARY CONTROL POINT AND ASSOCIATED WORKS

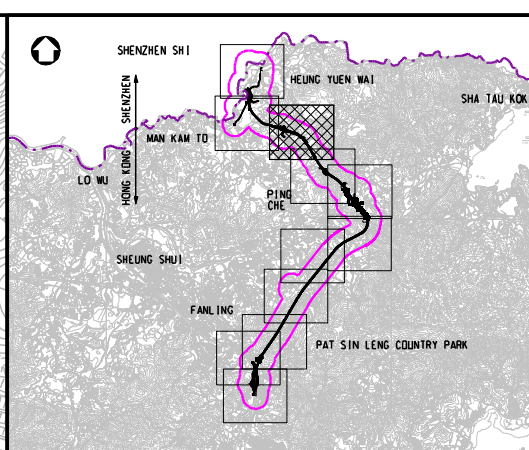
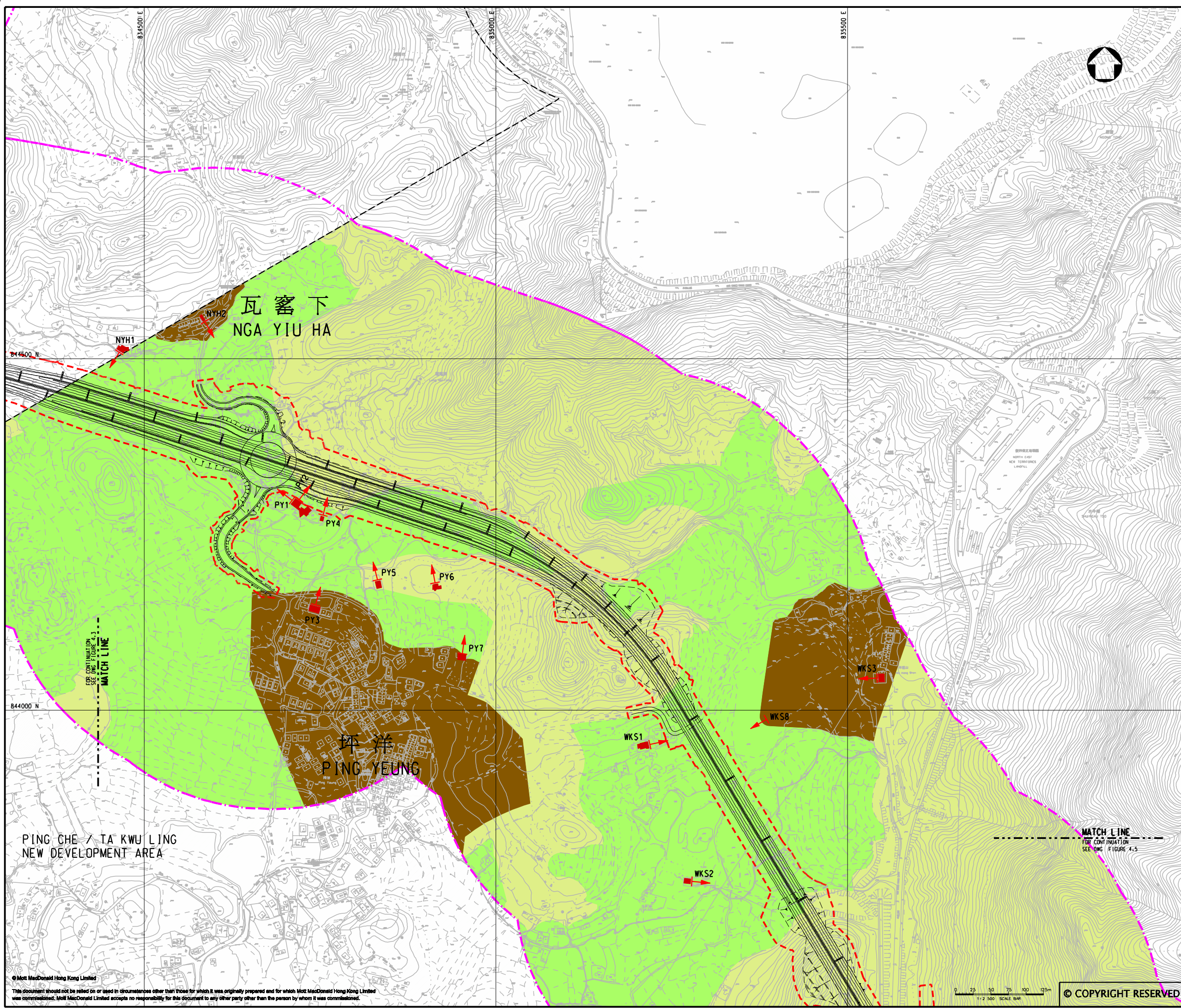
Title

REPRESENTATIVE NOISE SENSITIVE RECEIVERS  
(SHEET 2 OF 11)

Designed	SC	Eng.Chk.	EC
Drawn	MING	Coordination	EC
Dwg.Chk.	SC	Approved	HT
Scale at A1	1:2500	Project	255228
		CAD file	h:\255228\report\env\env\10086\FIG 4-3.dgn
Drawing No	FIGURE 4.3	Status	PRE
		Rev	P3

© COPYRIGHT RESERVED





**KEY PLAN**  
SCALE 1:100000

**LEGEND:**

- 300m ASSESSMENT AREA
- TENTATIVE WORKS AREA
- NOISE SENSITIVE RECEIVER (AIR-BORNE)
- ▨ NOISE SENSITIVE RECEIVER (GROUND-BORNE)
- ▶ FACADE FACING
- AGRICULTURE
- GREEN BELT
- VILLAGE TYPE DEVELOPMENT
- GOVERNMENT, INSTITUTION OR COMMUNITY
- OPEN STORAGE
- RECREATION
- COMPREHENSIVE DEVELOPMENT AREA
- OTHER SPECIFIED USES
- INDUSTRIAL (GROUP D)

P3	AUG 10	MING	GENERAL REVISION	FN	HT
P2	JUN 10	MING	GENERAL REVISION	FN	HT
P1	MAY 10	MING	FIRST ISSUE	FN	HT
Rev	Date	Drawn	Description	Ch'k'd	App'd

**Mott MacDonald**

20/F Two Landmark East  
100 How Ming Street  
Kowloon Tong, Kowloon  
Hong Kong  
T +852 2828 8787  
F +852 2827 1823  
www.mottmac.com.hk

**Client**

**CEDD** CIVIL ENGINEERING AND DEVELOPMENT DEPARTMENT

**Project**

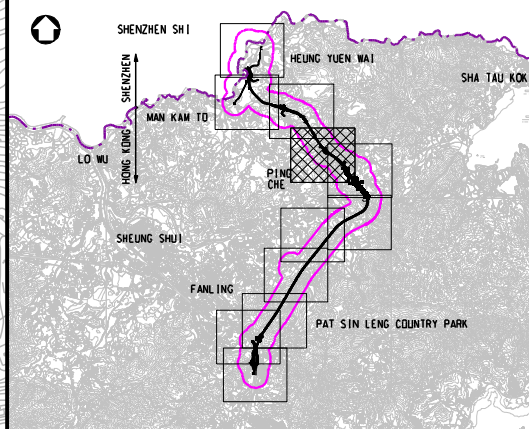
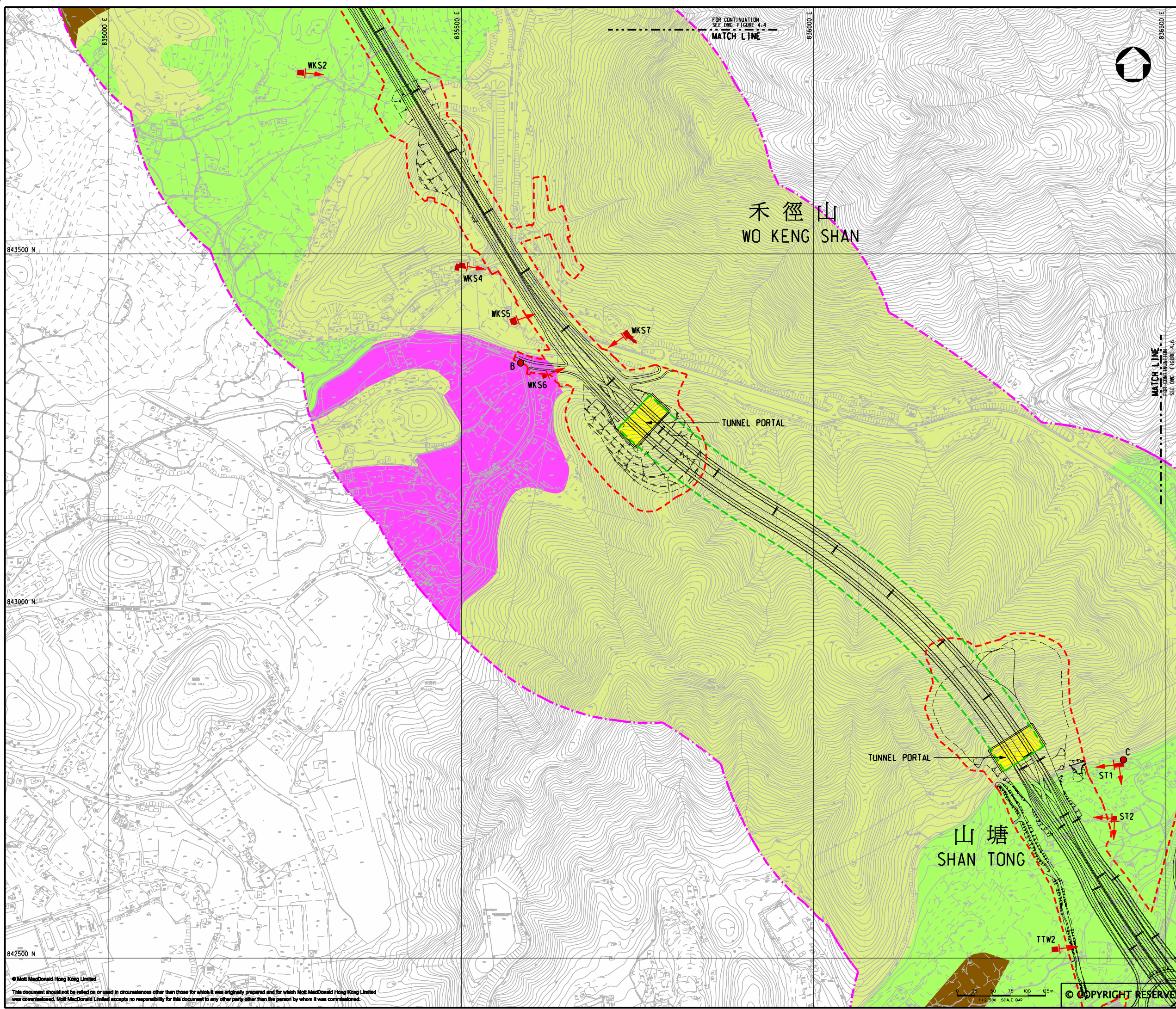
AGREEMENT NO. CE45/2008(CE)  
LIANTANG/HEUNG YUEN WAI BOUNDARY CONTROL POINT AND ASSOCIATED WORKS

**Title**

REPRESENTATIVE NOISE SENSITIVE RECEIVERS  
(SHEET 3 OF 11)

Designed	SC	Eng.Chk.	EC
Drawn	MING	Coordination	EC
Dwg.Chk.	SC	Approved	HT
Scale at A1	Project	Status	
1:2500	255228	PRE	
Drawing No	CAD file	Rev	
FIGURE 4.4	\\server\env\env\10086\FIG_4-4.dgn	P3	

© Mott MacDonald Hong Kong Limited  
This document should not be relied on or used in circumstances other than those for which it was originally prepared and for which Mott MacDonald Hong Kong Limited was commissioned. Mott MacDonald Limited accepts no responsibility for this document to any other party other than the person by whom it was commissioned.



**KEY PLAN**  
SCALE 1:100000

**LEGEND:**

- 300m ASSESSMENT AREA
- TENTATIVE WORKS AREA
- TUNNEL SECTION
- PROPOSED TUNNEL VENTILATION BUILDING
- NOISE SENSITIVE RECEIVER (AIR-BORNE)
- NOISE SENSITIVE RECEIVER (GROUND-BORNE)
- FACADE FACING
- B BASELINE MONITORING LOCATION
- AGRICULTURE
- GREEN BELT
- VILLAGE TYPE DEVELOPMENT
- GOVERNMENT, INSTITUTION OR COMMUNITY
- OPEN STORAGE
- RECREATION
- COMPREHENSIVE DEVELOPMENT AREA

P3	AUG 10	MING	GENERAL REVISION	FN	HT
P2	JUN 10	MING	GENERAL REVISION	FN	HT
P1	MAY 10	MING	FIRST ISSUE	FN	HT
Rev	Date	Drawn	Description	Ch'kd	App'd

**Mott MacDonald**

20F Two Landmark East  
100 How Ming Street  
Kowloon, Kowloon  
Hong Kong  
☎ +852 2828 8787  
☎ +852 2827 1823  
www.mottmac.com.hk

**Client**

**CEDD** CIVIL ENGINEERING AND DEVELOPMENT DEPARTMENT

**Project**

AGREEMENT NO. CE45/2008(CE)  
LIANTANG/HEUNG YUEN WAI BOUNDARY CONTROL POINT AND ASSOCIATED WORKS

**Title**

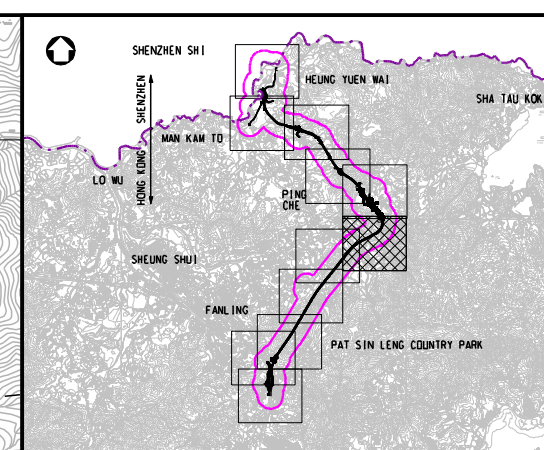
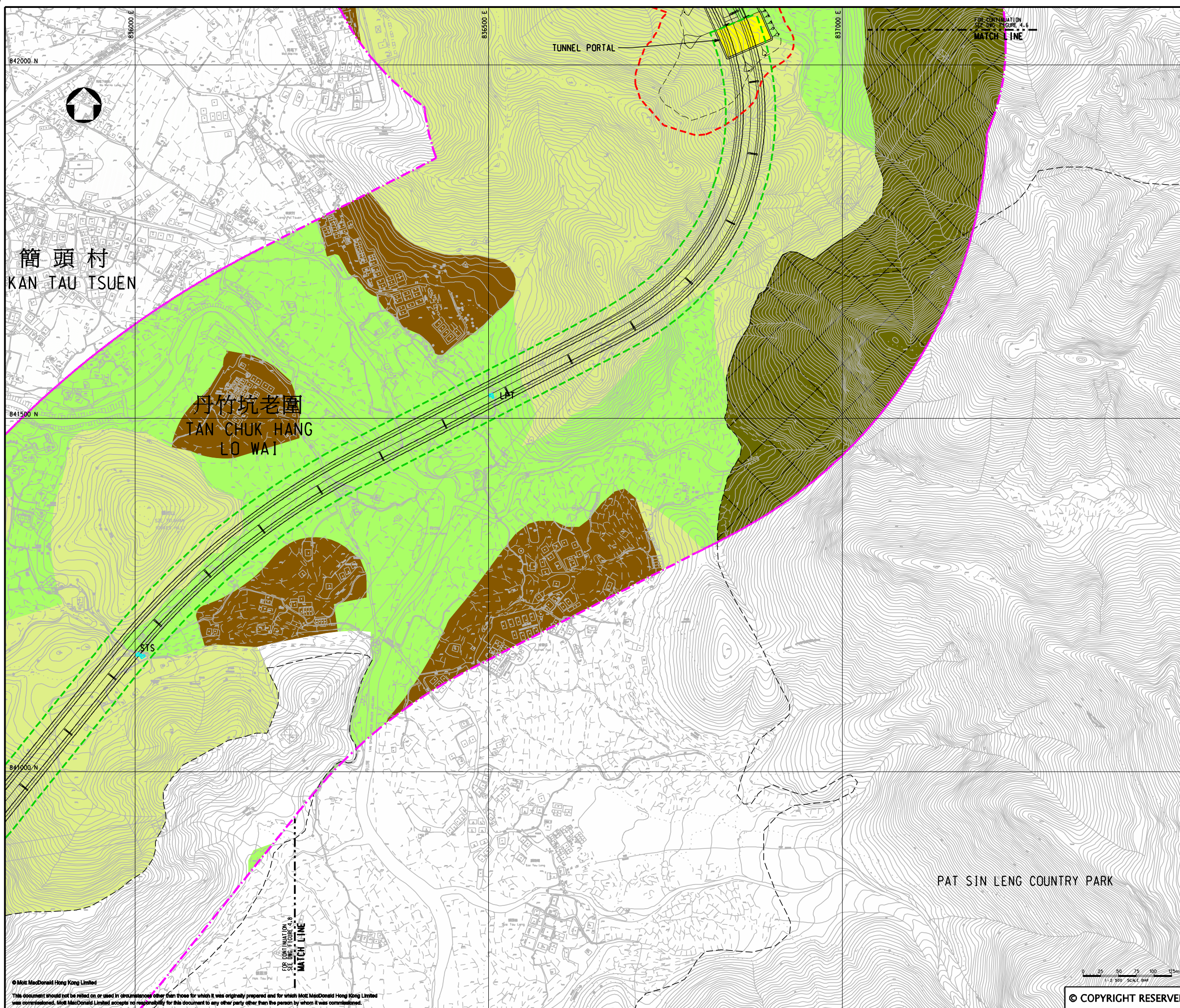
REPRESENTATIVE NOISE SENSITIVE RECEIVERS  
(SHEET 4 OF 11)

Designed	SC	Eng.Chk.	EC
Drawn	MING	Coordination	EC
Dwg.Chk.	SC	Approved	HT
Scale at A1	Project	Status	
1:2500	255228	PRE	
Drawing No	CAD file	Rev	
	\\255228\report\env\velo\008\FIG 4-5.dgn	P3	

© Mott MacDonald Hong Kong Limited  
This document should not be relied on or used in circumstances other than those for which it was originally prepared and for which Mott MacDonald Hong Kong Limited was commissioned. Mott MacDonald Limited accepts no responsibility for this document to any other party other than the person by whom it was commissioned.

© COPYRIGHT RESERVED





**KEY PLAN**  
SCALE 1:100000

**LEGEND:**

- 300m ASSESSMENT AREA
- TENTATIVE WORKS AREA
- TUNNEL SECTION
- PROPOSED TUNNEL VENTILATION BUILDING
- NOISE SENSITIVE RECEIVER (AIR-BORNE)
- NOISE SENSITIVE RECEIVER (GROUND-BORNE)
- ➔ FACADE FACING
- AGRICULTURE
- GREEN BELT
- VILLAGE TYPE DEVELOPMENT
- GOVERNMENT, INSTITUTION OR COMMUNITY
- OPEN STORAGE
- RECREATION
- CONSERVATION AREA

P2	AUG 10	MING	GENERAL REVISION	FN	HT
P1	MAY 10	MING	FIRST ISSUE	FN	HT
Rev	Date	Drawn	Description	Ch'k'd	App'd

20F Two Landmark East  
100 How Ming Street  
Kowloon, Hong Kong  
☎ +852 2828 8787  
☎ +852 2827 1823  
www.mottmac.com.hk

Client

**CIVIL ENGINEERING AND DEVELOPMENT DEPARTMENT**

Project  
AGREEMENT NO. CE45/2008(CE)  
LIANTANG/HEUNG YUEN WAI BOUNDARY CONTROL POINT AND ASSOCIATED WORKS

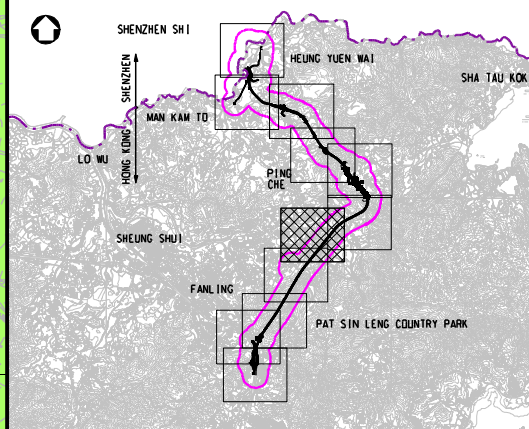
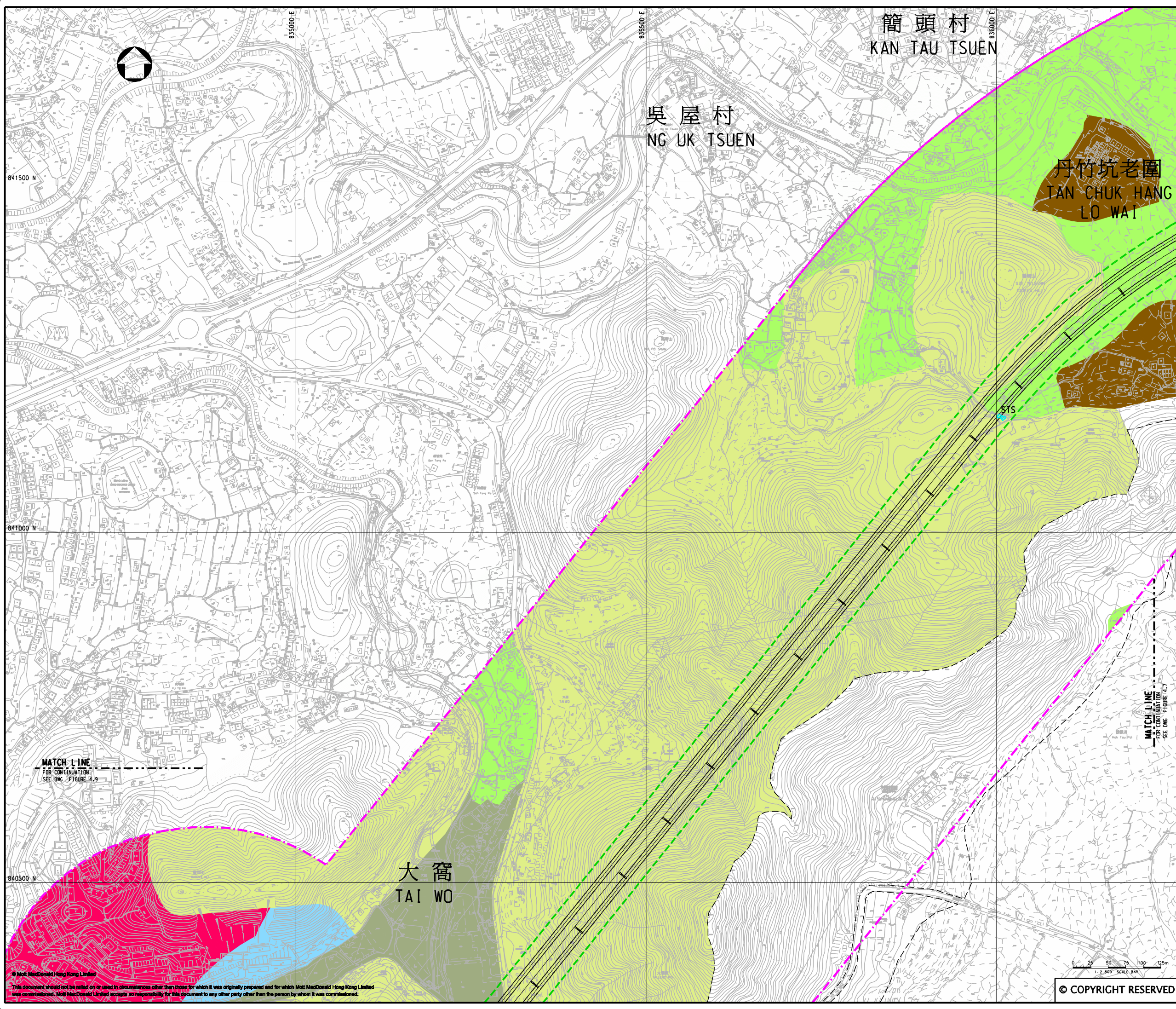
Title  
**REPRESENTATIVE NOISE SENSITIVE RECEIVERS**  
(SHEET 6 OF 11)

Designed	SC	Eng.Chk.	EC
Drawn	MING	Coordination	EC
Dwg.Chk.	SC	Approved	HT
Scale at A1	Project	Status	
1:2500	255228	PRE	
Drawing No	CAD file	Rev	
	\\255228\report\env\velo\0086\FIG 4-7.dgn	P2	

© COPYRIGHT RESERVED

FIGURE 4.7

© Mott MacDonald Hong Kong Limited  
This document should not be relied on or used in circumstances other than those for which it was originally prepared and for which Mott MacDonald Hong Kong Limited was commissioned. Mott MacDonald Limited accepts no responsibility for this document to any other party other than the person by whom it was commissioned.



**KEY PLAN**  
SCALE 1:100000

**LEGEND:**

- - - 300m ASSESSMENT AREA
- - - TENTATIVE WORKS AREA
- - - TUNNEL SECTION
- NOISE SENSITIVE RECEIVER (AIR-BORNE)
- ▨ NOISE SENSITIVE RECEIVER (GROUND-BORNE)
- ▶ FACADE FACING
- AGRICULTURE
- GREEN BELT
- VILLAGE TYPE DEVELOPMENT
- GOVERNMENT, INSTITUTION OR COMMUNITY
- OPEN STORAGE
- RECREATION
- COMPREHENSIVE DEVELOPMENT AREA

P2	AUG 10	MING	GENERAL REVISION	FN	HT
P1	MAY 10	MING	FIRST ISSUE	FN	HT
Rev	Date	Drawn	Description	Ch'kd	App'd

**Mott MacDonald**

20/F Two Landmark East  
100 How Ming Street  
Kowloon, Kowloon  
Hong Kong  
☎ +852 2828 8787  
☎ +852 2827 1823  
www.mottmac.com.hk

Client

**CEDD**

**CIVIL ENGINEERING AND DEVELOPMENT DEPARTMENT**

Project

AGREEMENT NO. CE45/2008(CE)  
LIANTANG/HEUNG YUEN WAI BOUNDARY CONTROL POINT AND ASSOCIATED WORKS

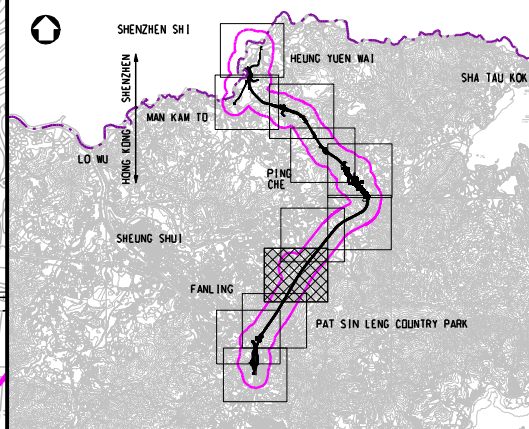
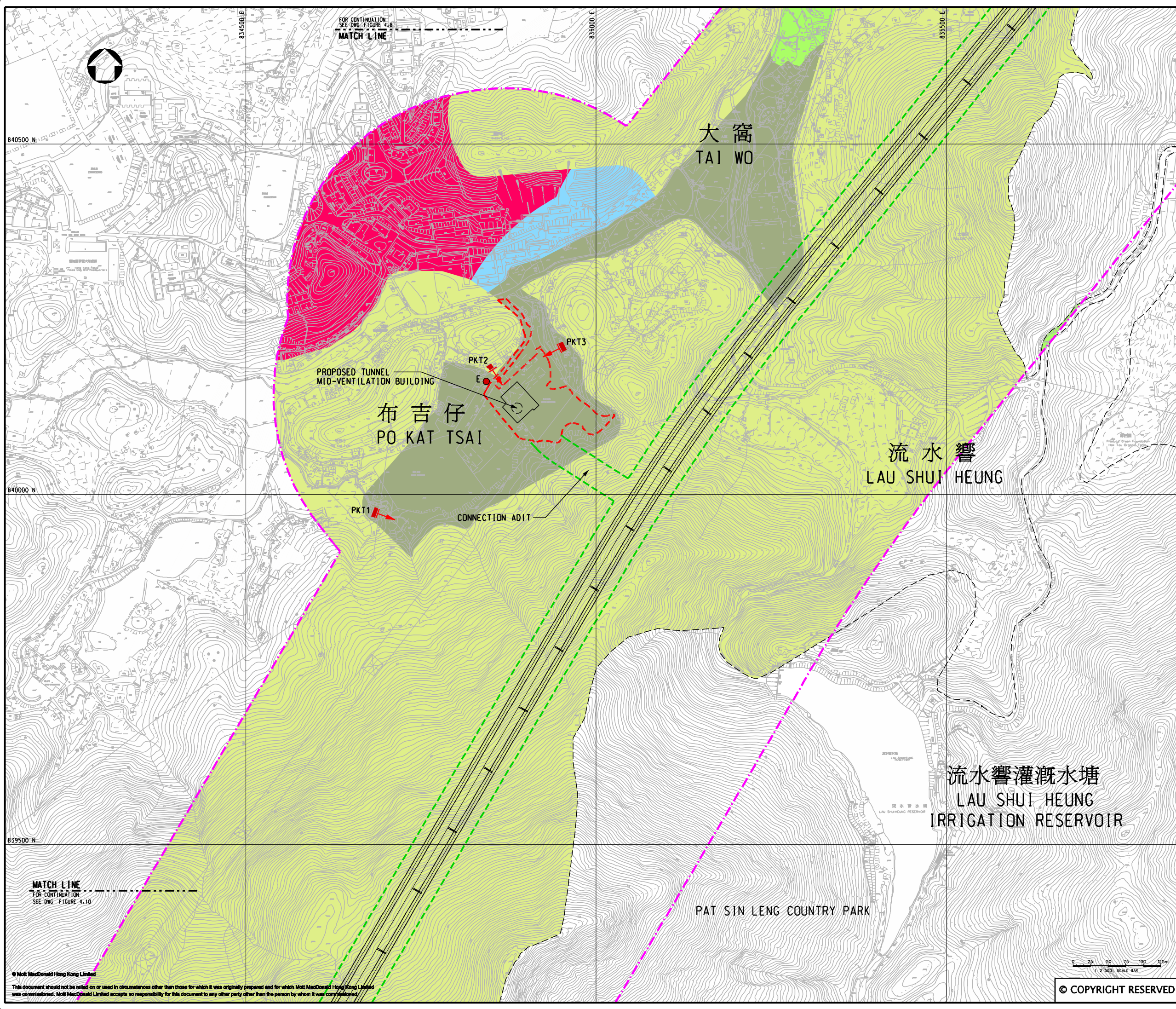
Title

REPRESENTATIVE NOISE SENSITIVE RECEIVERS  
(SHEET 7 OF 11)

Designed	SC	Eng.Chk.	EC
Drawn	MING	Coordination	EC
Dwg.Chk.	SC	Approved	HT
Scale at A1	Project	Status	
1:2500	255228	PRE	
Drawing No	CAD file	Rev	
	\\h255228\report\env\velo\10086\FIG 4-8.dgn	P2	

© COPYRIGHT RESERVED

© Mott MacDonald Hong Kong Limited  
This document should not be relied on or used in circumstances other than those for which it was originally prepared and for which Mott MacDonald Hong Kong Limited was commissioned. Mott MacDonald Limited accepts no responsibility for this document to any other party other than the person by whom it was commissioned.



**KEY PLAN**  
SCALE 1:100000

**LEGEND:**

- 300m ASSESSMENT AREA
- TENTATIVE WORKS AREA
- TUNNEL SECTION
- NOISE SENSITIVE RECEIVER (AIR-BORNE)
- NOISE SENSITIVE RECEIVER (GROUND-BORNE)
- FACADE FACING
- BASELINE MONITORING LOCATION
- AGRICULTURE
- GREEN BELT
- VILLAGE TYPE DEVELOPMENT
- GOVERNMENT, INSTITUTION OR COMMUNITY
- OPEN STORAGE
- RECREATION
- COMPREHENSIVE DEVELOPMENT AREA

P2	AUG 10	MING	GENERAL REVISION	FN	HT
P1	MAY 10	MING	FIRST ISSUE	FN	HT
Rev	Date	Drawn	Description	Ch'k'd	App'd

**Mott MacDonald**

20/F Two Landmark East  
100 How Ming Street  
Kowloon, Kowloon  
Hong Kong  
T +852 2828 8787  
F +852 2827 1823  
www.mottmac.com.hk

**Client**

**CEDD** CIVIL ENGINEERING AND DEVELOPMENT DEPARTMENT

**Project**

AGREEMENT NO. CE45/2008(CE)  
LIANTANG/HEUNG YUEN WAI BOUNDARY CONTROL POINT AND ASSOCIATED WORKS

**Title**

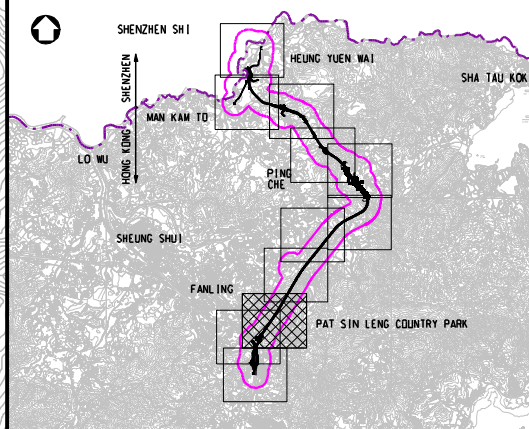
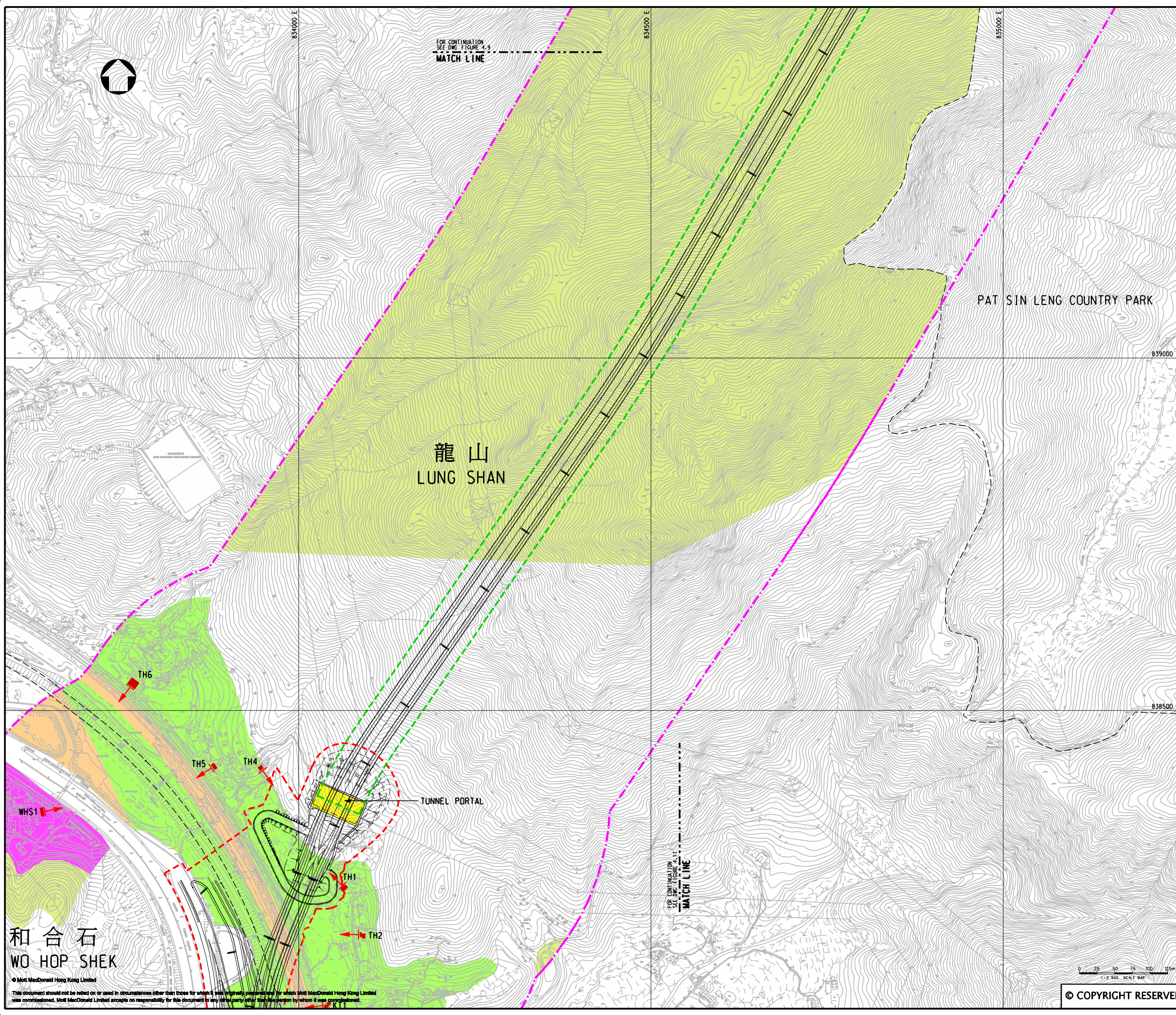
REPRESENTATIVE NOISE SENSITIVE RECEIVERS  
(SHEET 8 OF 11)

Designed	SC	Eng.Chk.	EC
Drawn	MING	Coordination	EC
Dwg.Chk.	SC	Approved	HT
Scale at A1	Project	Status	
1:2500	255228	PRE	
CAD file	R:\255228\report\env\env\1008\6\FIG 4-9.dgn		
Drawing No	FIGURE 4.9	Rev	P2

© COPYRIGHT RESERVED

© Mott MacDonald Hong Kong Limited  
This document should not be relied on or used in circumstances other than those for which it was originally prepared and for which Mott MacDonald Hong Kong Limited was commissioned. Mott MacDonald Limited accepts no responsibility for this document to any other party other than the person by whom it was commissioned.





**KEY PLAN**  
SCALE 1:100000

**LEGEND:**

- 300m ASSESSMENT AREA
- TENTATIVE WORKS AREA
- TUNNEL SECTION
- PROPOSED TUNNEL VENTILATION BUILDING
- NOISE SENSITIVE RECEIVER (AIR-BORNE)
- NOISE SENSITIVE RECEIVER (GROUND-BORNE)
- ▶ FACADE FACING
- AGRICULTURE
- GREEN BELT
- GOVERNMENT, INSTITUTION OR COMMUNITY
- OPEN STORAGE
- RECREATION
- COMPREHENSIVE DEVELOPMENT AREA
- OTHER SPECIFIED USES

P3	AUG 10	MING	GENERAL REVISION	FN	HT
P2	JUN 10	MING	GENERAL REVISION	FN	HT
P1	MAY 10	MING	FIRST ISSUE	FN	HT
Rev	Date	Drawn	Description	Ch'kd	App'd

**Mott MacDonald**

20/F Two Landmark East  
100 How Ming Street  
Kowloon Tong, Kowloon  
Hong Kong  
☎ +852 2828 8787  
☎ +852 2827 1823  
www.mottmac.com.hk

Client

**CEDD**

**CIVIL ENGINEERING AND DEVELOPMENT DEPARTMENT**

Project

AGREEMENT NO. CE45/2008(CE)  
LIANTANG/HEUNG YUEN WAI BOUNDARY CONTROL POINT AND ASSOCIATED WORKS

Title

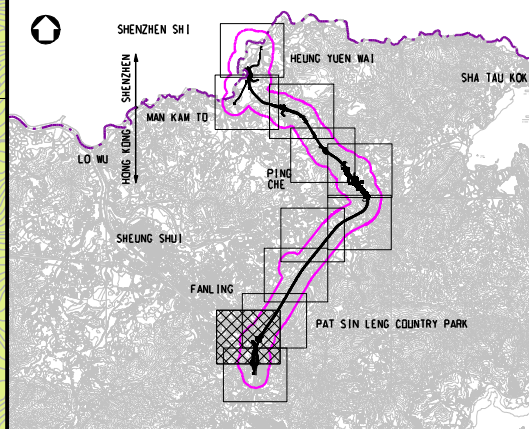
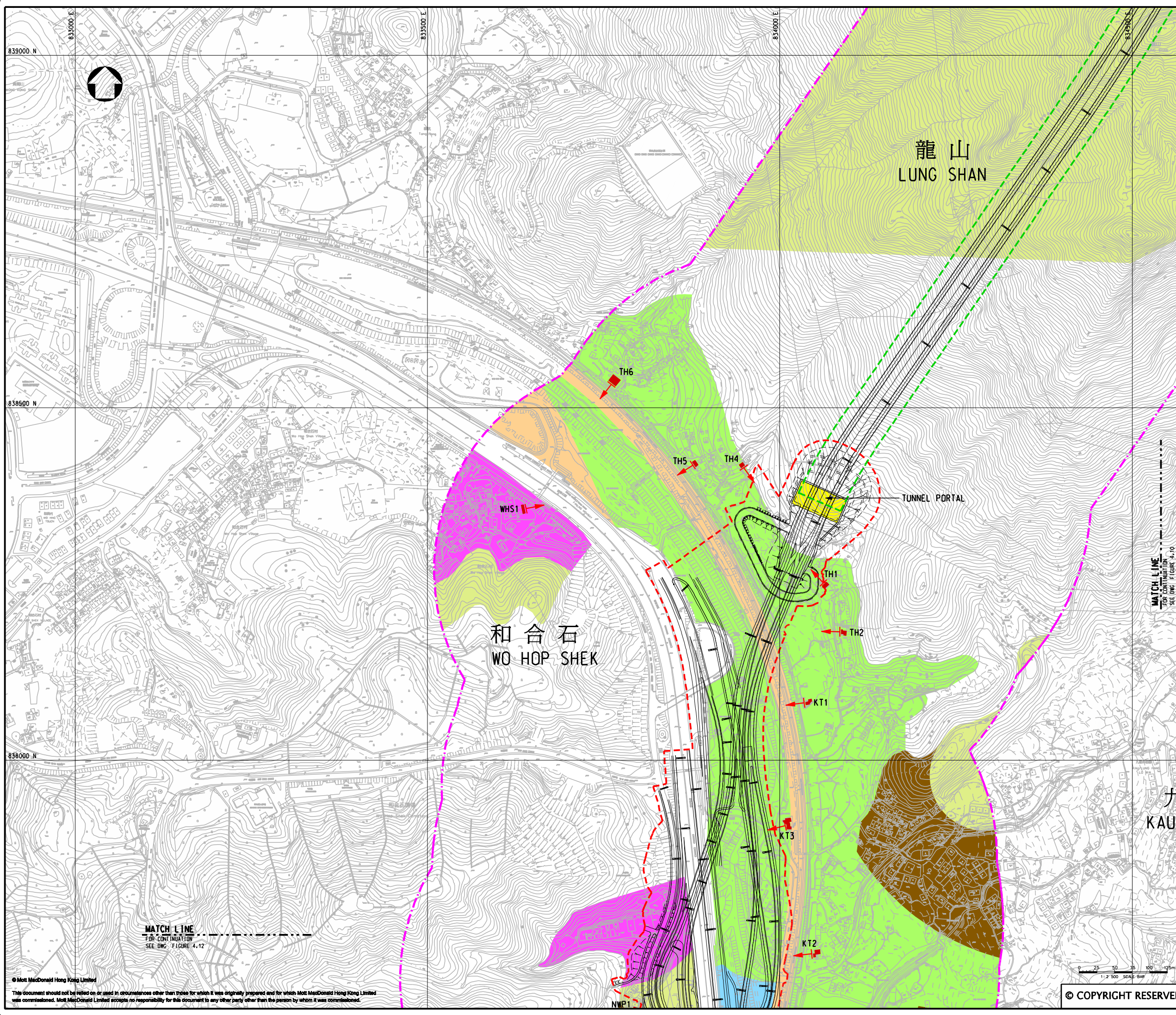
REPRESENTATIVE NOISE SENSITIVE RECEIVERS  
(SHEET 9 OF 11)

Designed	SC	Eng.Chk.	EC	
Drawn	MING	Coordination	EC	
Dwg.Chk.	SC	Approved	HT	
Scale at A1	1:2500	Project	255228	Status
		CAD file	h:\255228\report\env\velo\1008\6\FIG 4-10.dgn	PRE
Drawing No	FIGURE 4.10	Rev	P3	

© COPYRIGHT RESERVED

和合石  
WO HOP SHEK

© Mott MacDonald Hong Kong Limited  
This document should not be relied on or used in circumstances other than those for which it was originally prepared and for which Mott MacDonald Hong Kong Limited was commissioned. Mott MacDonald Limited accepts no responsibility for this document to any other party with whom it was commissioned.



**LEGEND:**

- 300m ASSESSMENT AREA
- TENTATIVE WORKS AREA
- TUNNEL SECTION
- PROPOSED TUNNEL VENTILATION BUILDING
- ▶ NOISE SENSITIVE RECEIVER (AIR-BORNE)
- NOISE SENSITIVE RECEIVER (GROUND-BORNE)
- ▶ FACADE FACING
- AGRICULTURE
- GREEN BELT
- VILLAGE TYPE DEVELOPMENT
- GOVERNMENT, INSTITUTION OR COMMUNITY
- OPEN STORAGE
- RECREATION
- OTHER SPECIFIED USES
- INDUSTRIAL (GROUP D)

P3	AUG 10	MING	GENERAL REVISION	FN	HT
P2	JUN 10	MING	GENERAL REVISION	FN	HT
P1	MAY 10	MING	FIRST ISSUE	FN	HT
Rev	Date	Drawn	Description	Ch'k'd	App'd

20F Two Landmark East  
100 How Ming Street  
Kowloon, Kowloon  
Hong Kong  
☎ +852 2828 8787  
☎ +852 2827 1823  
www.mottmac.com.hk

Client

**CIVIL ENGINEERING AND DEVELOPMENT DEPARTMENT**

Project

AGREEMENT NO. CE45/2008(CE)  
LIANTANG/HEUNG YUEN WAI BOUNDARY CONTROL POINT AND ASSOCIATED WORKS

Title

REPRESENTATIVE NOISE SENSITIVE RECEIVERS  
(SHEET 10 OF 11)

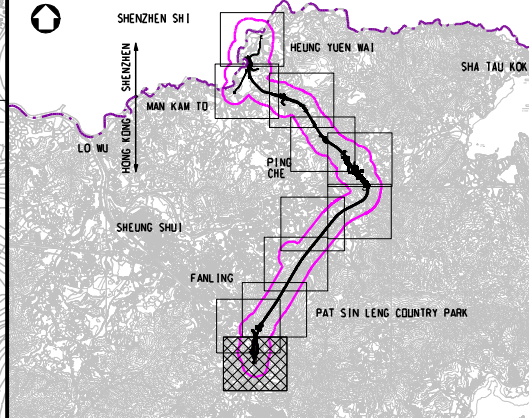
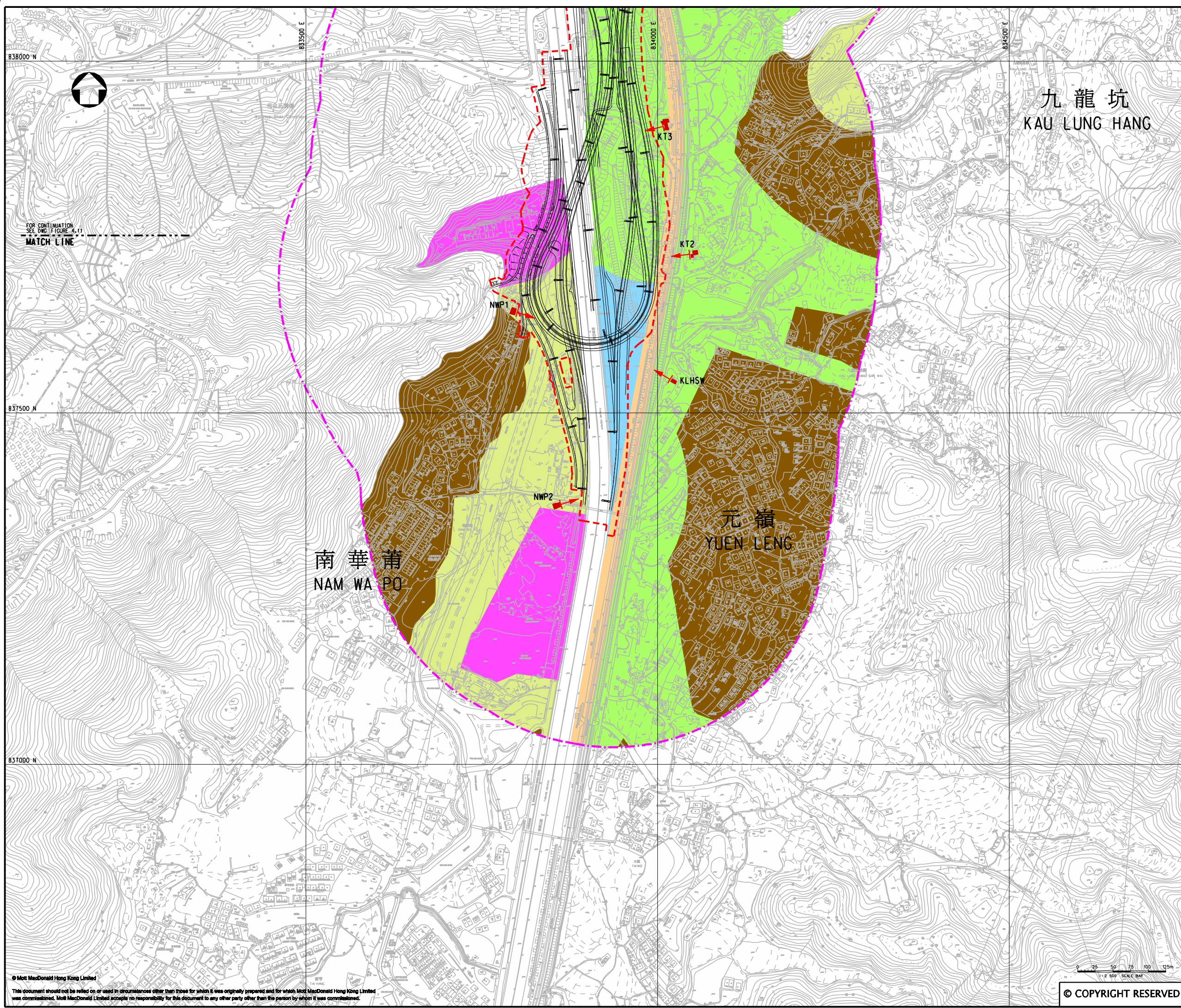
Designed	SC	Eng.Chk.	EC
Drawn	MING	Coordination	EC
Dwg.Chk.	SC	Approved	HT
Scale at A1	Project	Status	
1:2500	255228	PRE	
Drawing No	CAD file	Rev	
	\\server\env\env\10086\FIG 4-11.dgn	P3	

© COPYRIGHT RESERVED

FIGURE 4.11

MATCH LINE FOR CONTINUATION SEE DWG. FIGURE 4.12

© Mott MacDonald Hong Kong Limited  
This document should not be relied on or used in circumstances other than those for which it was originally prepared and for which Mott MacDonald Hong Kong Limited was commissioned. Mott MacDonald Limited accepts no responsibility for this document to any other party other than the person by whom it was commissioned.



**KEY PLAN**  
SCALE 1:100000

**LEGEND:**

- 300m ASSESSMENT AREA
- TENTATIVE WORKS AREA
- █ NOISE SENSITIVE RECEIVER (AIR-BORNE)
- █ NOISE SENSITIVE RECEIVER (GROUND-BORNE)
- ▶ FACADE FACING
- █ AGRICULTURE
- █ GREEN BELT
- █ VILLAGE TYPE DEVELOPMENT
- █ GOVERNMENT, INSTITUTION OR COMMUNITY
- █ OPEN STORAGE
- █ RECREATION
- █ COMPREHENSIVE DEVELOPMENT AREA
- █ OTHER SPECIFIED USES
- █ INDUSTRIAL (GROUP D)

P2	AUG 10	MING	GENERAL REVISION	FN	HT
P1	MAY 10	MING	FIRST ISSUE	FN	HT
Rev	Date	Drawn	Description	Ch'k'd	App'd

**Mott MacDonald**

20/F Two Landmark East  
100 How Ming Street  
Kowloon, Hong Kong  
T +852 2828 5757  
F +852 2827 1823  
www.mottmac.com.hk

**Client**

**CEDD** CIVIL ENGINEERING AND DEVELOPMENT DEPARTMENT

**Project**

AGREEMENT NO. CE45/2008(CE)  
LIANTANG/HEUNG YUEN WAI BOUNDARY CONTROL POINT AND ASSOCIATED WORKS

**Title**

REPRESENTATIVE NOISE SENSITIVE RECEIVERS  
(SHEET 11 OF 11)

Designed	SC	Eng.Chk.	EC
Drawn	MING	Coordination	EC
Dwg.Chk.	SC	Approved	HT
Scale at A1	Project	Status	
1:2500	255228	PRE	
Drawing No	CAD file	Rev	
FIGURE 4.12	J:\255228\REPORT\ENV\EM\008\VFIC 4-2.dgn	P2	

© COPYRIGHT RESERVED

This document should not be relied on or used in circumstances other than those for which it was originally prepared and for which Mott MacDonald Hong Kong Limited was commissioned. Mott MacDonald Limited accepts no responsibility for this document to any other party other than the person by whom it was commissioned.