

- KEY PLAN**
SCALE 1:100000
- LEGEND:**
- - - 300m ASSESSMENT AREA
 - - - TENTATIVE WORKS AREA
 - 0.8m HIGH NOISE BARRIER
 - 2.5m HIGH NOISE BARRIER
 - NOISE SENSITIVE RECEIVER (AIR-BORNE)
 - ▶ FACADE FACING
- REMARKS:**
1. THE SPECIFIED BARRIER HEIGHT IS FROM FINISHED ROAD SURFACE LEVEL UNLESS SPECIFIED OTHERWISE.
 2. THE HEIGHT OF THE PARAPET IS 0.8m FROM FINISHED ROAD SURFACE.

Rev	Date	Drawn	Description	Ch'k'd	App'd
P4	NOV 10	MING	GENERAL REVISION	FN	HT
P3	OCT 10	MING	GENERAL REVISION	FN	HT
P2	AUG 10	MING	GENERAL REVISION	FN	HT
P1	JUN 10	MING	FIRST ISSUE	FN	HT

Mott MacDonald

20F Two Landmark East
100 How Ming Street
Kowloon, Hong Kong
T +852 2828 8787
F +852 2827 1823
www.mottmac.com.hk

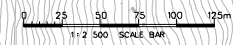
Client

CEDD CIVIL ENGINEERING AND DEVELOPMENT DEPARTMENT

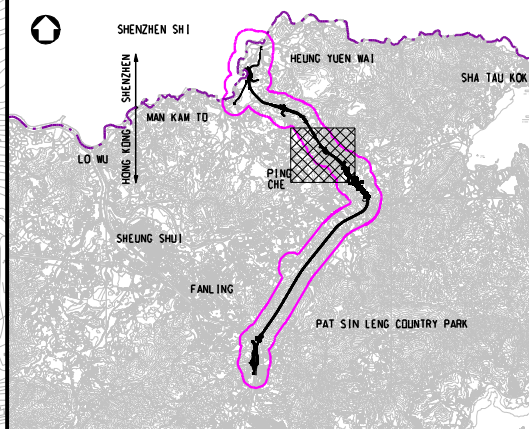
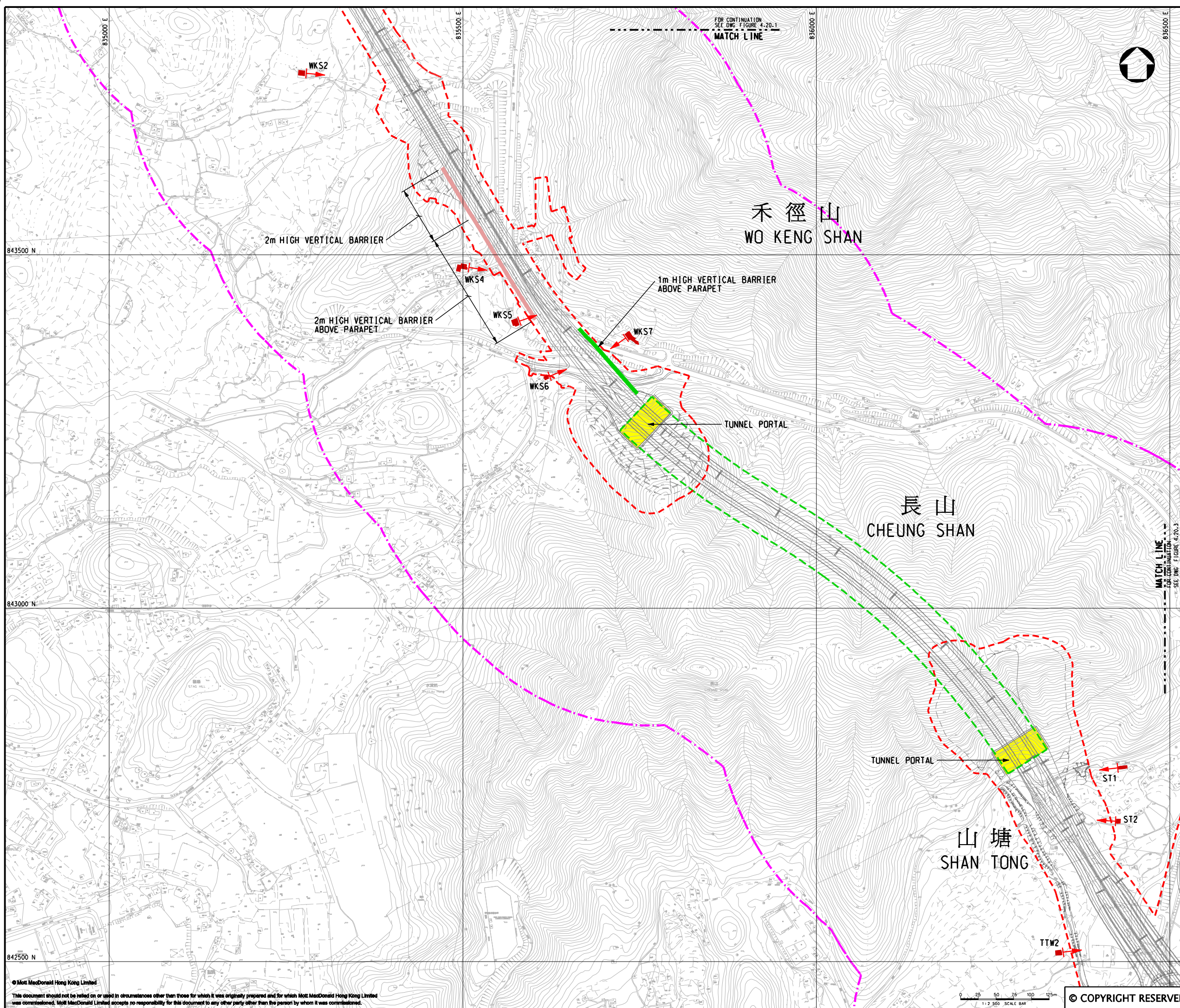
Project
AGREEMENT NO. CE45/2008(CE)
LIANTANG/HEUNG YUEN WAI BOUNDARY CONTROL POINT AND ASSOCIATED WORKS

Title
PROPOSED LOCATION OF NOISE BARRIERS

Designed	EY	Eng.Chk.	EC
Drawn	MING	Coordination	EC
Dwg.Chk.	EY	Approved	HT
Scale at A1	1:2500	Project	255228
		CAD file	h:\255228\report\env\velo\0185\FIG_4-201.dgn
Drawing No	FIGURE 4.20.1	Status	PRE
		Rev	P4



© COPYRIGHT RESERVED



- KEY PLAN**
SCALE 1:100000
- LEGEND:**
- 300m ASSESSMENT AREA
 - TENTATIVE WORKS AREA
 - TUNNEL SECTION
 - 1m HIGH NOISE BARRIER
 - 2m HIGH NOISE BARRIER
 - PROPOSED TUNNEL VENTILATION BUILDING
 - NOISE SENSITIVE RECEIVER (AIR-BORNE)
 - ▶ FACADE FACING

- REMARKS:**
1. THE SPECIFIED BARRIER HEIGHT IS FROM FINISHED ROAD SURFACE LEVEL UNLESS SPECIFIED OTHERWISE.
 2. THE HEIGHT OF THE PARAPET IS 0.8m FROM FINISHED ROAD SURFACE.

Rev	Date	Drawn	Description	Ch'k'd	App'd
P4	NOV 10	MING	GENERAL REVISION	FN	HT
P3	OCT 10	MING	GENERAL REVISION	FN	HT
P2	AUG 10	MING	GENERAL REVISION	FN	HT
P1	JUN 10	MING	FIRST ISSUE	FN	HT

Mott MacDonald

20/F Two Landmark East
100 How Ming Street
Kowloon, Hong Kong
T +852 2828 8787
F +852 2827 1823
www.mottmac.com.hk

Client

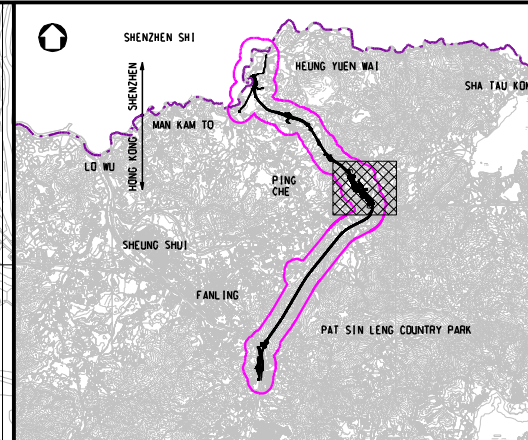
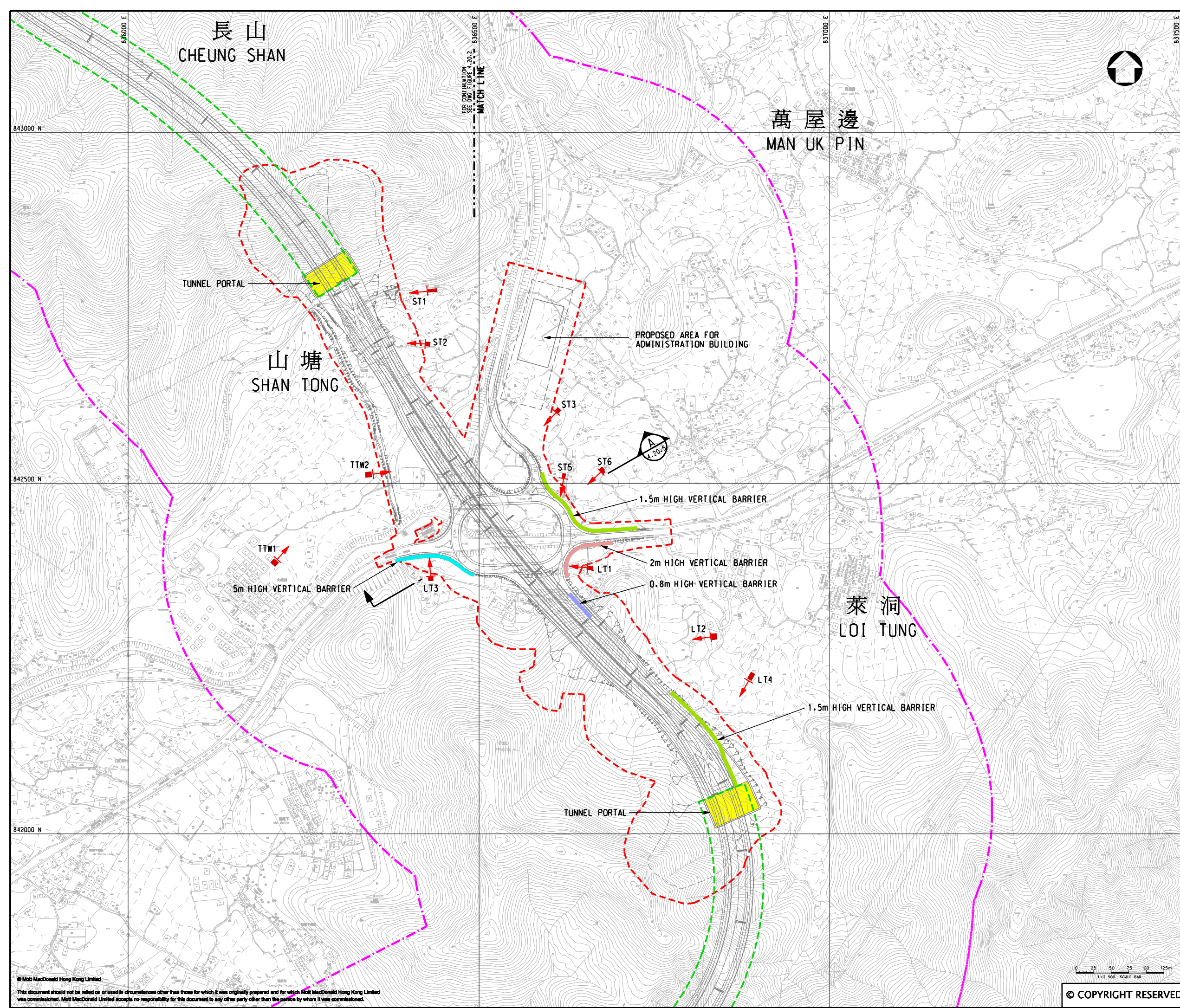
CEDD CIVIL ENGINEERING AND DEVELOPMENT DEPARTMENT

Project
AGREEMENT NO. CE45/2008(CE)
LIANTANG/HEUNG YUEN WAI BOUNDARY CONTROL POINT AND ASSOCIATED WORKS

Title
PROPOSED LOCATION OF NOISE BARRIERS

Designed	EY	Eng.Chk.	EC
Drawn	MING	Coordination	EC
Dwg.Chk.	EY	Approved	HT

Scale at A1	Project	Status
1:2500	255228	PRE
Drawing No	FIGURE 4.20.2	Rev
		P4



KEY PLAN
SCALE 1:100000

LEGEND:

- 300m ASSESSMENT AREA
- TENTATIVE WORKS AREA
- TUNNEL SECTION
- 0.8m HIGH NOISE BARRIER
- 1.5m HIGH NOISE BARRIER
- 5m HIGH NOISE BARRIER
- PROPOSED TUNNEL VENTILATION BUILDING
- NOISE SENSITIVE RECEIVER (AIR-BORNE)
- ▶ FACADE FACING

REMARKS:

1. THE SPECIFIED BARRIER HEIGHT IS FROM FINISHED ROAD SURFACE LEVEL UNLESS SPECIFIED OTHERWISE.
2. THE HEIGHT OF THE PARAPET IS 0.8m FROM FINISHED ROAD SURFACE.

Rev	Date	Drawn	Description	Ch'k'd	App'd
P4	NOV 10	MING	GENERAL REVISION	FN	HT
P3	OCT 10	MING	GENERAL REVISION	FN	HT
P2	AUG 10	MING	GENERAL REVISION	FN	HT
P1	JUN 10	MING	FIRST ISSUE	FN	HT

Mott MacDonald

20/F Two Landmark East
100 How Ming Street
Kowloon
Hong Kong
T +852 2828 5757
F +852 2827 1823
W www.mottmac.com.hk

Client

CEDD CIVIL ENGINEERING AND DEVELOPMENT DEPARTMENT

Project

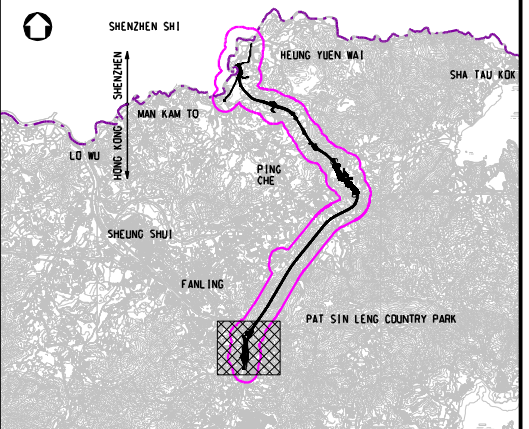
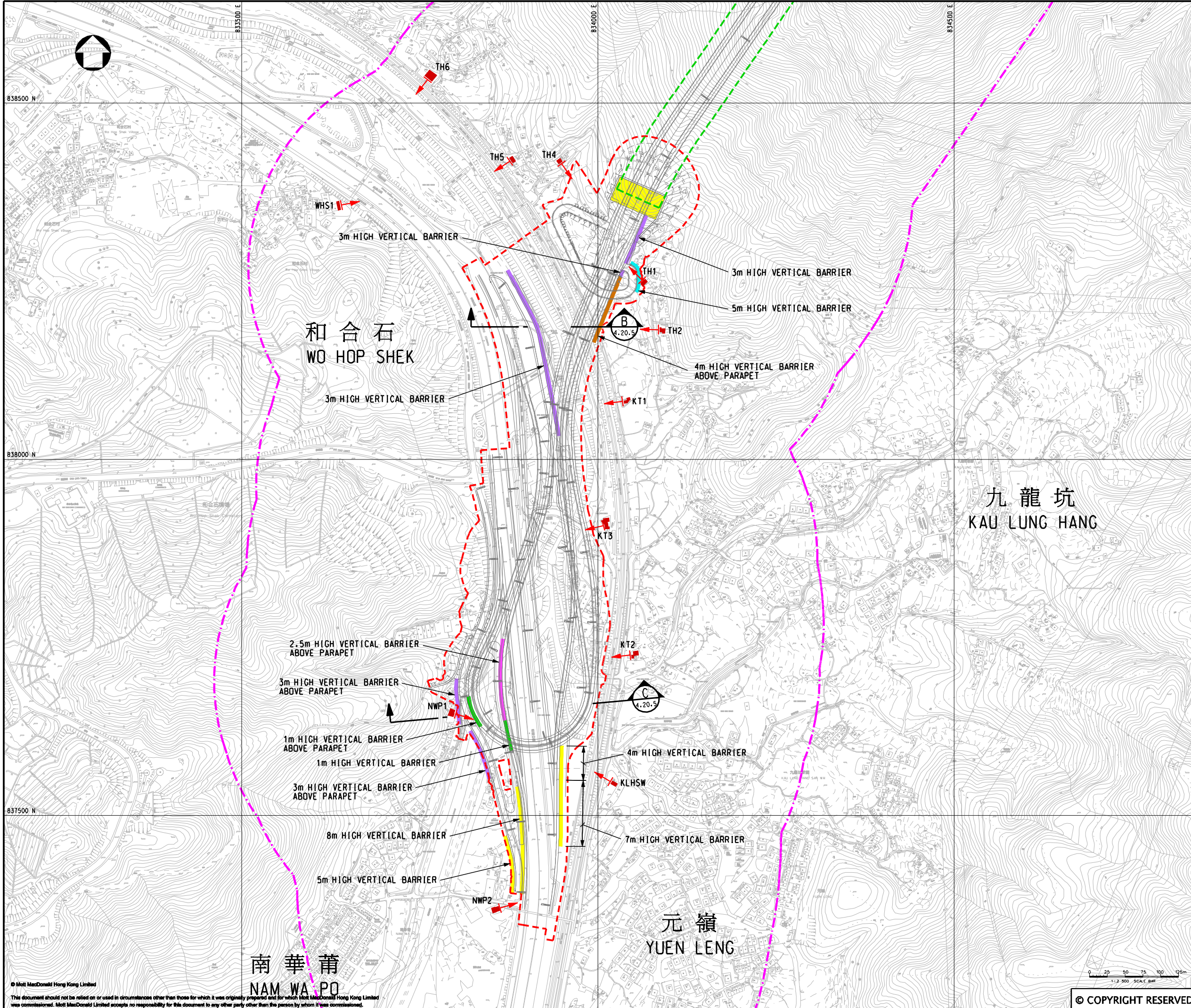
AGREEMENT NO. CE45/2008(CE)
LIANTANG/HEUNG YUEN WAI BOUNDARY CONTROL POINT AND ASSOCIATED WORKS

Title

PROPOSED LOCATION OF NOISE BARRIERS

Designed	EY	Eng.Chk.	EC
Drawn	MING	Coordination	EC
Dwg.Chk.	EY	Approved	HT
Scale at A1	1:2500	Project	255228
Scale at A1	1:2500	CAD File	4\255228\REPORT\ENV\SI\A1\015\FIG 4-20.3.dgn
Drawing No	FIGURE 4.20.3	Status	PRE
Rev	P4		

© Mott MacDonald Hong Kong Limited
This document should not be relied on or used in circumstances other than those for which it was originally prepared and for which Mott MacDonald Hong Kong Limited was commissioned. Mott MacDonald Limited accepts no responsibility for this document to any other party other than the person by whom it was commissioned.



KEY PLAN
SCALE 1:100000

LEGEND:

- 300m ASSESSMENT AREA
- TENTATIVE WORKS AREA
- TUNNEL SECTION
- 1m HIGH NOISE BARRIER
- 2.5m HIGH NOISE BARRIER
- 3m HIGH NOISE BARRIER
- 4m HIGH NOISE BARRIER
- 5m HIGH NOISE BARRIER
- MODIFIED NOISE BARRIERS PROPOSED FOR WIDENING OF FANLING HIGHWAY
- PROPOSED TUNNEL VENTILATION BUILDING
- NOISE SENSITIVE RECEIVER (AIR-BORNE)
- ▶ FACADE FACING

- REMARKS:**
- THE SPECIFIED BARRIER HEIGHT IS FROM FINISHED ROAD SURFACE LEVEL UNLESS SPECIFIED OTHERWISE.
 - THE HEIGHT OF THE PARAPET IS 0.8m FROM FINISHED ROAD SURFACE.

P4	NOV 10	MING	GENERAL REVISION	FN	HT
P3	OCT 10	MING	GENERAL REVISION	FN	HT
P2	AUG 10	MING	GENERAL REVISION	FN	HT
P1	JUN 10	MING	FIRST ISSUE	FN	HT
Rev	Date	Drawn	Description	Ch'k'd	App'd

Mott MacDonald

20/F Two Landmark East
100 How Ming Street
Kau Tong, Kowloon
Hong Kong
T +852 2828 5757
F +852 2827 1823
W www.mottmac.com.hk

Client

CEDD CIVIL ENGINEERING AND DEVELOPMENT DEPARTMENT

Project
AGREEMENT NO. CE45/2008 (CE)
LIANTANG/HEUNG YUEN WAI BOUNDARY CONTROL POINT AND ASSOCIATED WORKS

Title
PROPOSED LOCATION OF NOISE BARRIERS

Designed	EY	Eng.Chk.	EC
Drawn	MING	Coordination	EC
Dwg.Chk.	EY	Approved	HT
Scale at A1	1:2500	Project	255228
Scale at A1	1:2500	CAD File	\\255228\REPORT\ENV\SI\A1\08\FIG 4-20.4.dgn
Drawing No	FIGURE 4.20.4	Status	PRE
		Rev	P4