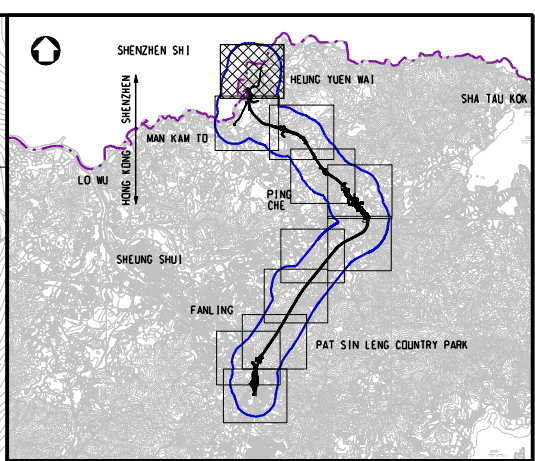
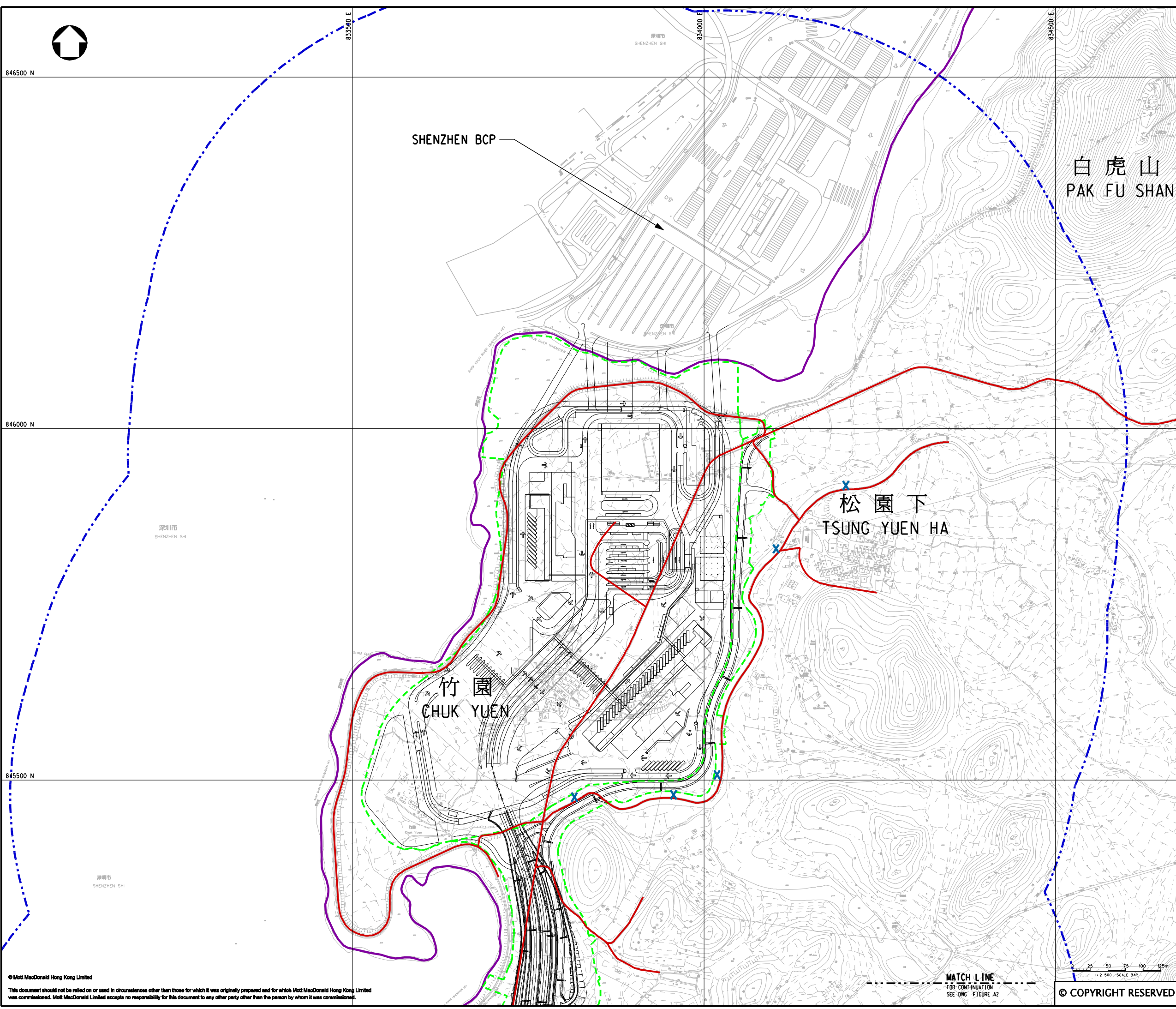


Appendix 9.1

Ecological Survey Locations and Study Boundary



KEY PLAN
SCALE 1:100000

LEGEND:

- BOUNDARY OF HKSAR
- 500m ASSESSMENT AREA
- WORKS AREA
- TRANSECT ROUTE FOR BIRDS, MAMMALS, INSECTS AND HERPETOFAUNA SURVEY
- FRESHWATER FISH SURVEY

P5	OCT 10	MING	GENERAL REVISION	GC	HT
P4	SEP 10	MING	GENERAL REVISION	GC	HT
P3	AUG 10	MING	GENERAL REVISION	GC	HT
P2	JUL 10	MING	GENERAL REVISION	GC	HT
P1	APR 10	MING	FIRST ISSUE	GC	HT
Rev	Date	Drawn	Description	Ch'k'd	App'd

Mott MacDonald

20/F Two Landmark East
100 How Ming Street
Kowloon Tong, Kowloon
Hong Kong
T +852 2828 5757
F +852 2827 1823
W www.mottmac.com.hk

CEDD

**CIVIL ENGINEERING
AND DEVELOPMENT
DEPARTMENT**

Project

AGREEMENT NO. CE45/2008(CE)
LIANTANG/HEUNG YUEN WAI BOUNDARY
CONTROL POINT AND ASSOCIATED WORKS

Title

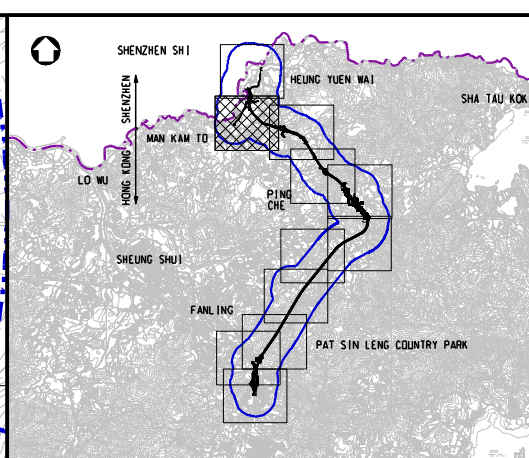
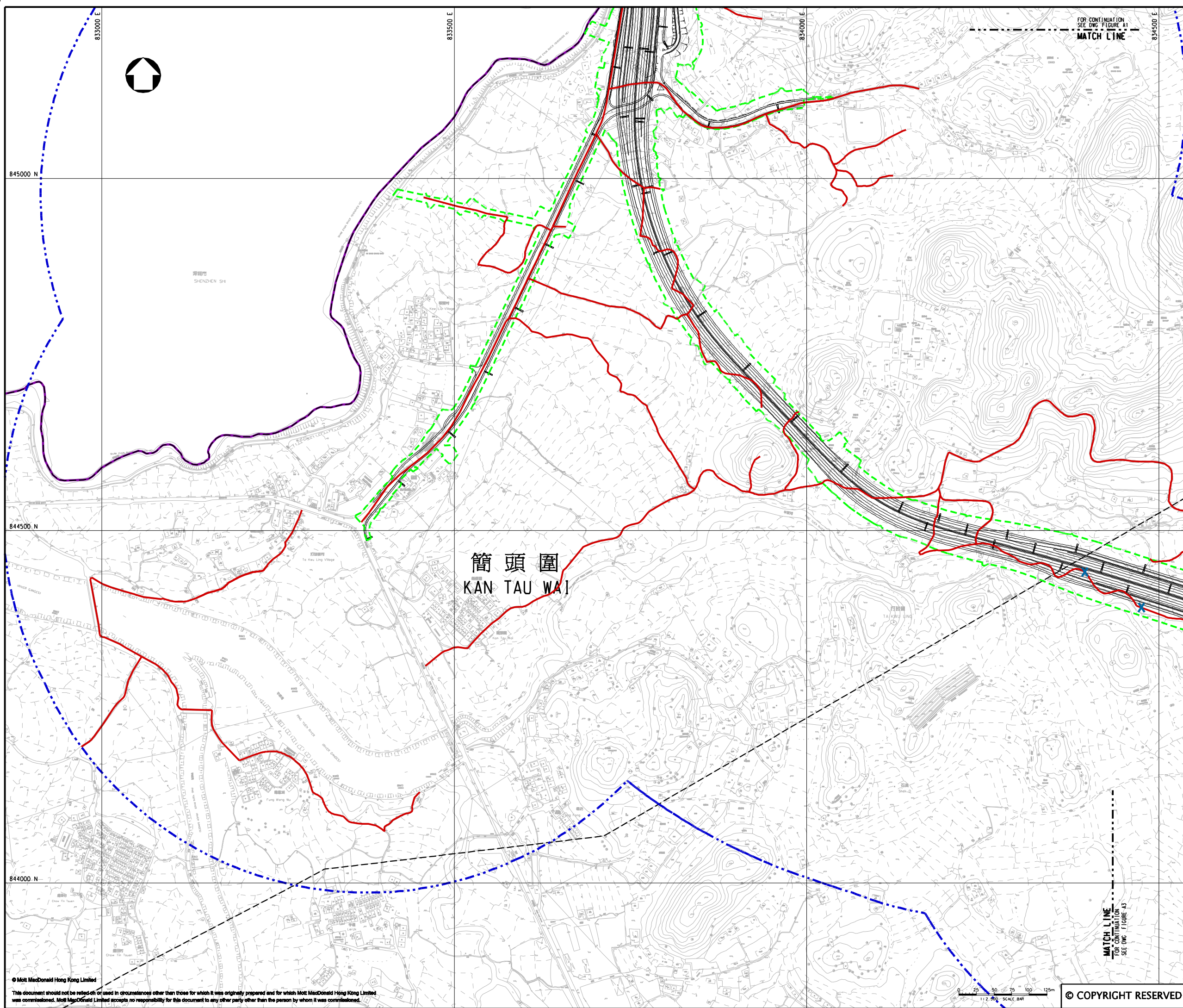
ECOLOGICAL SURVEY LOCATIONS
AND STUDY BOUNDARY
(SHEET 1 OF 11)

Designed	GC	Eng.Chk.	EC	
Drawn	MING	Coordination	EC	
Dwg.Chk.	GC	Approved	HT	
Scale at A1	1:2500	Project	255228	Status
		CAD file	h:\255228\report\env\velo\0105\FIG A1.dgn	PRE
Drawing No	FIGURE A1	Rev	P5	

© COPYRIGHT RESERVED

MATCH LINE
FOR CONTINUATION
SEE DWG. FIGURE A2

1:2500 SCALE BAR



KEY PLAN
SCALE 1:100000

LEGEND:

- BOUNDARY OF HKSAR
- 500m ASSESSMENT AREA
- WORKS AREA
- TRANSECT ROUTE FOR BIRDS, MAMMALS, INSECTS AND HERPETOFAUNA SURVEY
- FRESHWATER FISH SURVEY

P5	OCT 10	MING	GENERAL REVISION	GC	HT
P4	SEP 10	MING	GENERAL REVISION	GC	HT
P3	AUG 10	MING	GENERAL REVISION	GC	HT
P2	JUL 10	MING	GENERAL REVISION	GC	HT
P1	APR 10	MING	FIRST ISSUE	GC	HT
Rev	Date	Drawn	Description	Ch'k'd	App'd

Mott MacDonald

20/F Two Landmark East
100 How Ming Street
Kowloon Tong, Kowloon
Hong Kong
T +852 2828 5757
F +852 2827 1823
W www.mottmac.com.hk

CEDD

**CIVIL ENGINEERING
AND DEVELOPMENT
DEPARTMENT**

Project

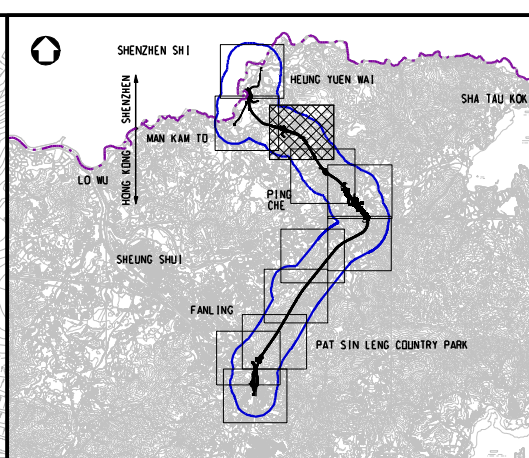
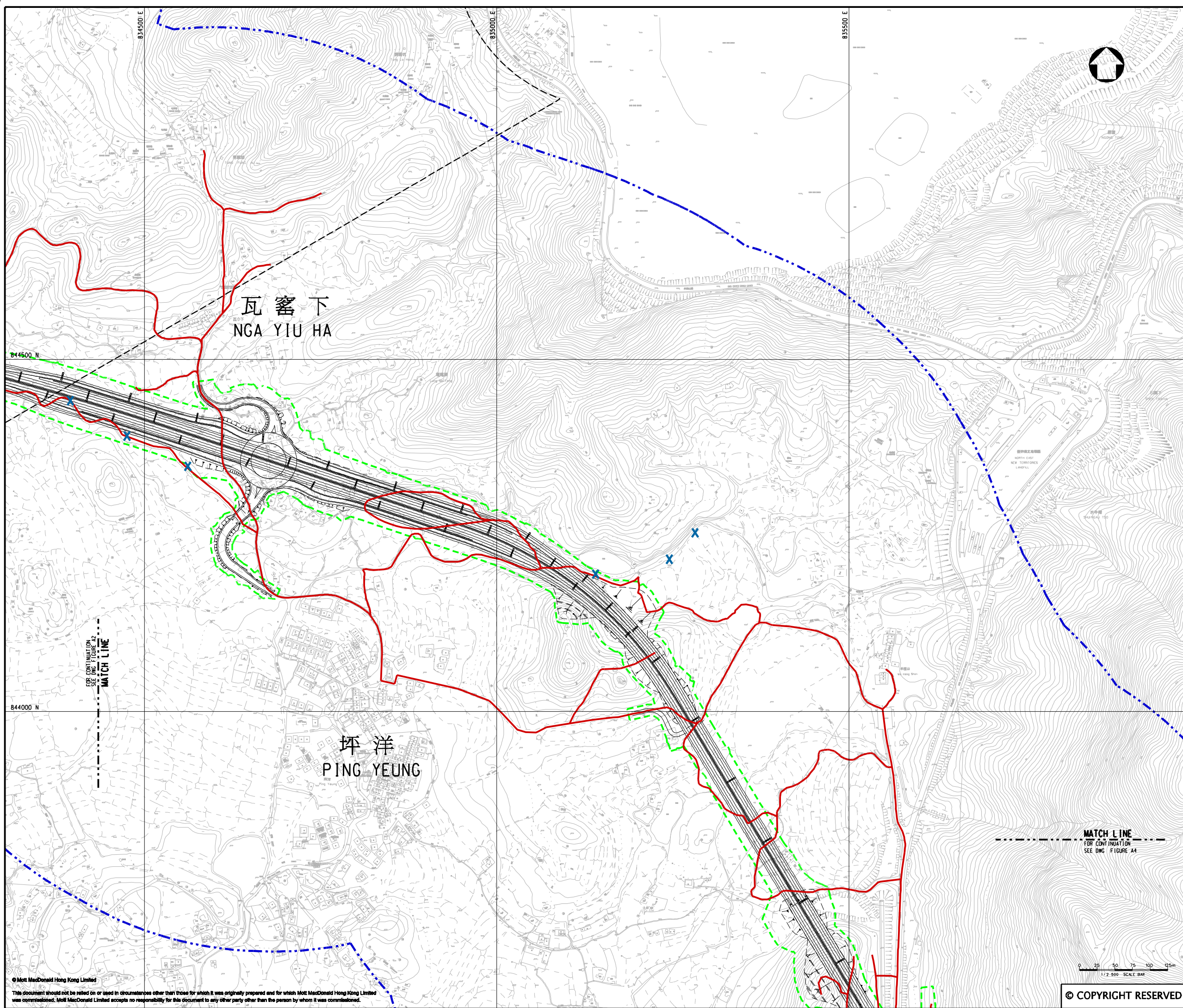
AGREEMENT NO. CE45/2008(CE)
LIANTANG/HEUNG YUEN WAI BOUNDARY
CONTROL POINT AND ASSOCIATED WORKS

Title

ECOLOGICAL SURVEY LOCATIONS
AND STUDY BOUNDARY
(SHEET 2 OF 11)

Designed	GC	Eng.Chk.	EC
Drawn	MING	Coordination	EC
Dwg.Chk.	GC	Approved	HT
Scale at A1	Project	Status	
1:2500	255228	PRE	
Drawing No	FIGURE A2	Rev	P5

© COPYRIGHT RESERVED



KEY PLAN

SCALE 1:100000

LEGEND:

- 500m ASSESSMENT AREA
- WORKS AREA
- TRANSECT ROUTE FOR BIRDS, MAMMALS, INSECTS AND HERPETOFAUNA SURVEY
- FRESHWATER FISH SURVEY

P5	OCT 10	MING	GENERAL REVISION	GC	HT
P4	SEP 10	MING	GENERAL REVISION	GC	HT
P3	AUG 10	MING	GENERAL REVISION	GC	HT
P2	JUL 10	MING	GENERAL REVISION	GC	HT
P1	APR 10	MING	FIRST ISSUE	GC	HT
Rev	Date	Drawn	Description	Ch'k'd	App'd



20/F Two Landmark East
100 How Ming Street
Kowloon, Kowloon
Hong Kong
T +852 2828 5757
F +852 2827 1823
W www.mottmac.com.hk

Client



CIVIL ENGINEERING
AND DEVELOPMENT
DEPARTMENT

Project

AGREEMENT NO. CE45/2008(CE)
LIANTANG/HEUNG YUEN WAI BOUNDARY
CONTROL POINT AND ASSOCIATED WORKS

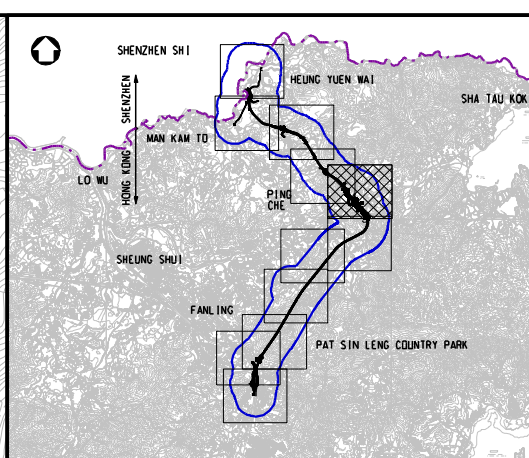
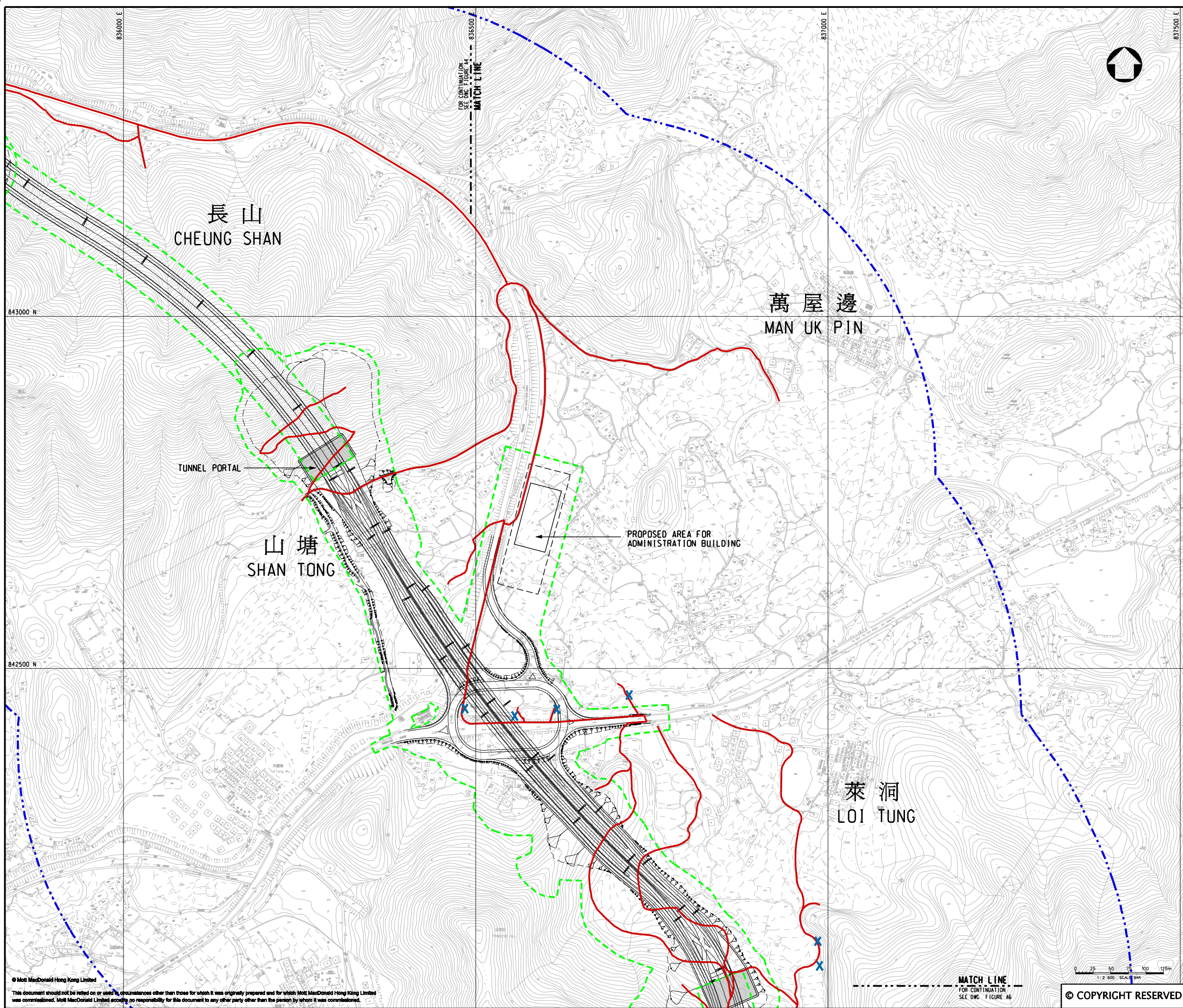
Title

ECOLOGICAL SURVEY LOCATIONS
AND STUDY BOUNDARY

(SHEET 3 OF 11)

Designed	GC	Eng. Chk.	EC	
Drawn	MING	Coordination	EC	
Dwg. Chk.	GC	Approved	HT	
Scale at A1	Project	255228	Status	
1:2500	CAD file	h:\255228\report\env\velo\0105\Fig A3.dgn	PRE	
Drawing No	FIGURE A3	Rev	P5	

© COPYRIGHT RESERVED



KEY PLAN
SCALE 1:100000

LEGEND:

- 500m ASSESSMENT AREA
- WORKS AREA
- TRANSECT ROUTE FOR BIRDS, MAMMALS, INSECTS AND HERPETOFAUNA SURVEY
- FRESHWATER FISH SURVEY

P5	OCT 10	MING	GENERAL REVISION	GC	HT
P4	SEP 10	MING	GENERAL REVISION	GC	HT
P3	AUG 10	MING	GENERAL REVISION	GC	HT
P2	JUL 10	MING	GENERAL REVISION	GC	HT
P1	APR 10	MING	FIRST ISSUE	GC	HT
Rev	Date	Drawn	Description	Ch'k'd	App'd

Mott MacDonald

20/F Two Landmark East
100 How Ming Street
Kowloon
Hong Kong
T +852 2828 5757
F +852 2827 1823
W www.mottmac.com.hk

Client

CEDD

CIVIL ENGINEERING
AND DEVELOPMENT
DEPARTMENT

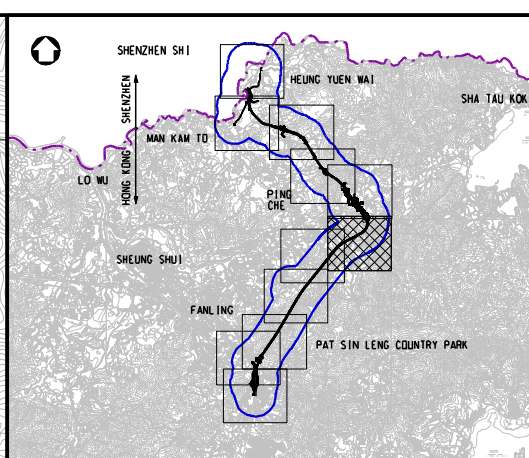
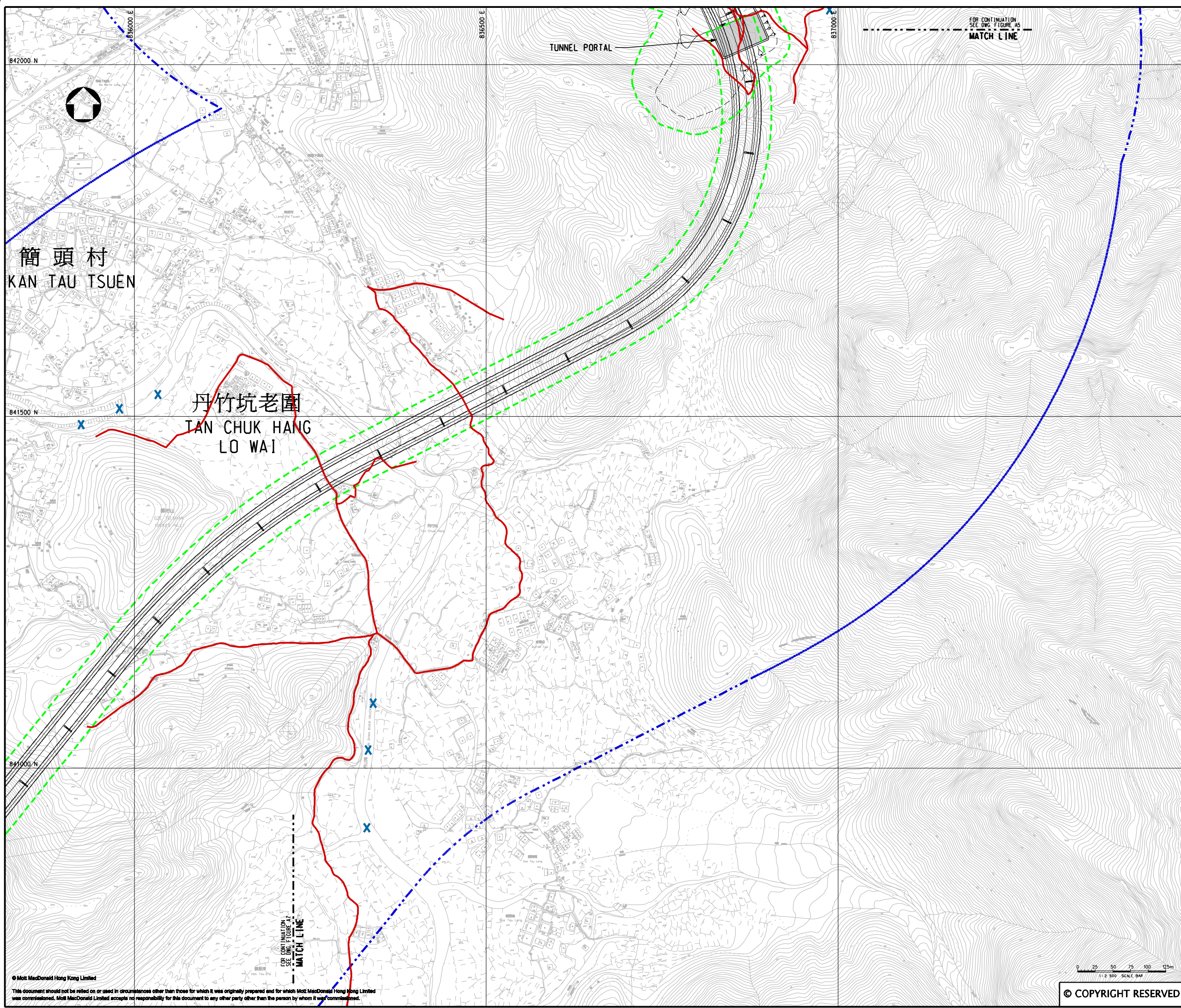
Project

AGREEMENT NO. CE45/2008(CE)
LIANTANG/HEUNG YUEN WAI BOUNDARY
CONTROL POINT AND ASSOCIATED WORKS

Title

ECOLOGICAL SURVEY LOCATIONS
AND STUDY BOUNDARY
(SHEET 5 OF 11)

Designed	GC	Eng.Chk.	EC	
Drawn	MING	Coordination	EC	
Dwg.Chk.	GC	Approved	HT	
Scale at A1	Project	255228	Status	
1:2500	CAD file	h:\255228\report\env\velo\0105\FIG_A5.dgn	PRE	
Drawing No	FIGURE A5	Rev	P5	



KEY PLAN
SCALE 1:100000

LEGEND:

- 500m ASSESSMENT AREA
- WORKS AREA
- TRANSECT ROUTE FOR BIRDS, MAMMALS, INSECTS AND HERPETOFAUNA SURVEY
- FRESHWATER FISH SURVEY

P5	OCT 10	MING	GENERAL REVISION	GC	HT
P4	SEP 10	MING	GENERAL REVISION	GC	HT
P3	AUG 10	MING	GENERAL REVISION	GC	HT
P2	JUL 10	MING	GENERAL REVISION	GC	HT
P1	APR 10	MING	FIRST ISSUE	GC	HT
Rev	Date	Drawn	Description	Ch'k'd	App'd

Mott MacDonald

20/F Two Landmark East
100 How Ming Street
Kowloon, Kowloon
Hong Kong
T +852 2828 5757
F +852 2827 1823
W www.mottmac.com.hk

CEDD

**CIVIL ENGINEERING
AND DEVELOPMENT
DEPARTMENT**

Project

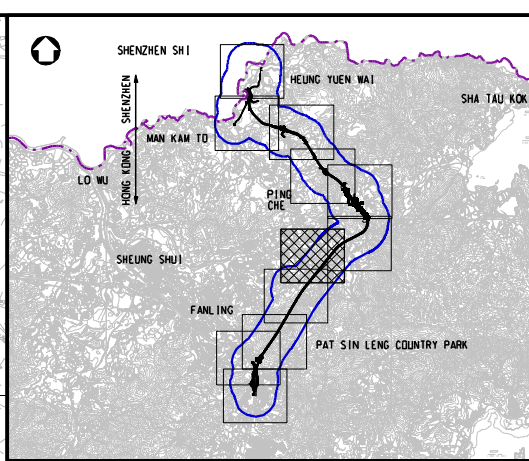
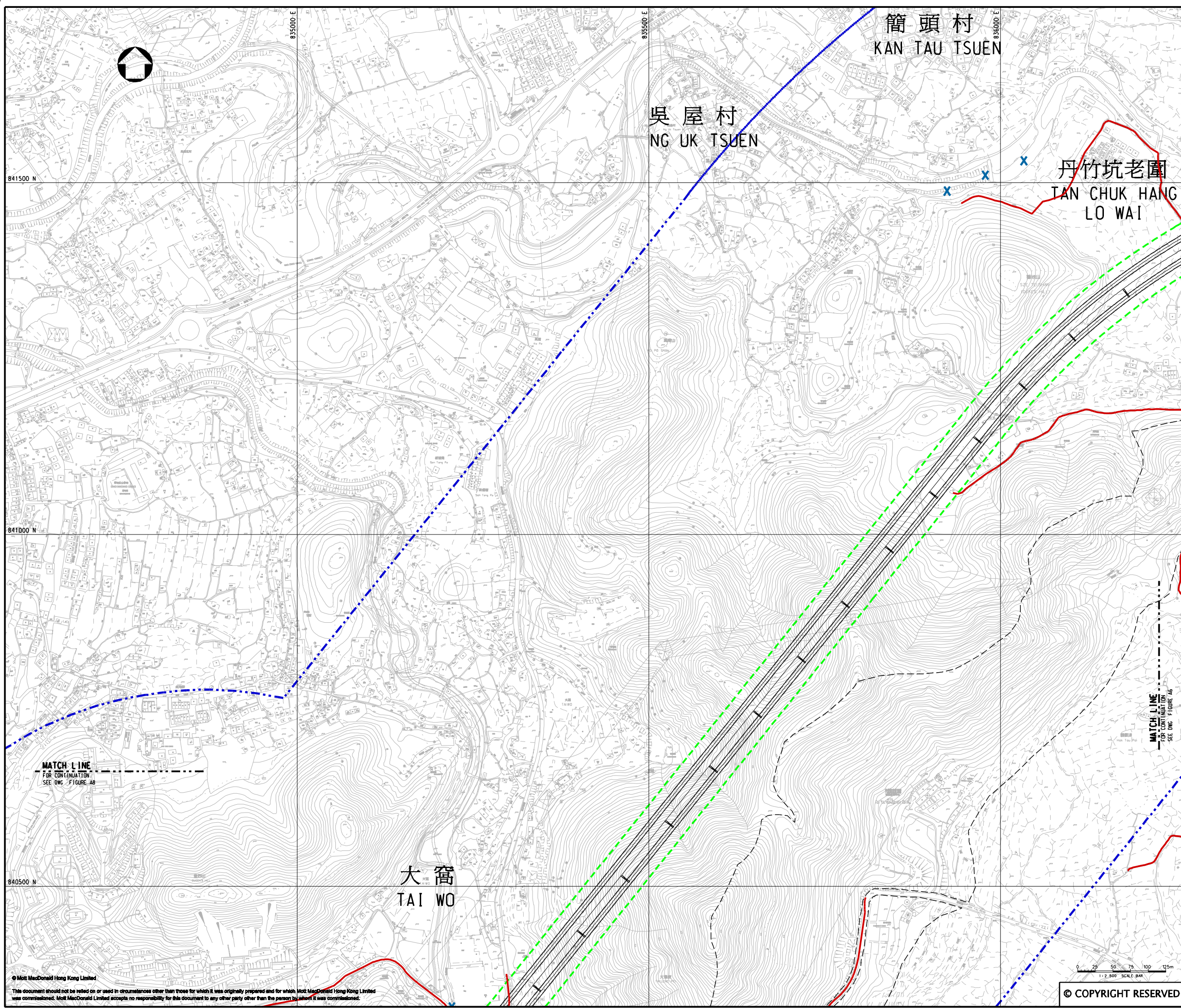
AGREEMENT NO. CE45/2008(CE)
LIANTANG/HEUNG YUEN WAI BOUNDARY
CONTROL POINT AND ASSOCIATED WORKS

Title

ECOLOGICAL SURVEY LOCATIONS
AND STUDY BOUNDARY
(SHEET 6 OF 11)

Designed	GC	Eng. Chk.	EC
Drawn	MING	Coordination	EC
Dwg. Chk.	GC	Approved	HT
Scale at A1	Project	Status	
1:2500	255228	PRE	
CAD file	h:\255228\report\env\env\0105\FIG A6.dgn	Rev	
Drawing No	FIGURE A6	P5	

© COPYRIGHT RESERVED



KEY PLAN
SCALE 1:100000

LEGEND:

- 500m ASSESSMENT AREA
- WORKS AREA
- TRANSECT ROUTE FOR BIRDS, MAMMALS, INSECTS AND HERPETOFAUNA SURVEY
- FRESHWATER FISH SURVEY

P5	OCT 10	MING	GENERAL REVISION	GC	HT
P4	SEP 10	MING	GENERAL REVISION	GC	HT
P3	AUG 10	MING	GENERAL REVISION	GC	HT
P2	JUL 10	MING	GENERAL REVISION	GC	HT
P1	APR 10	MING	FIRST ISSUE	GC	HT
Rev	Date	Drawn	Description	Ch'k'd	App'd

Mott MacDonald

20/F Two Landmark East
100 How Ming Street
Kwun Tong, Kowloon
Hong Kong
T +852 2828 5757
F +852 2827 1823
W www.mottmac.com.hk

Client

CEDD

CIVIL ENGINEERING
AND DEVELOPMENT
DEPARTMENT

Project

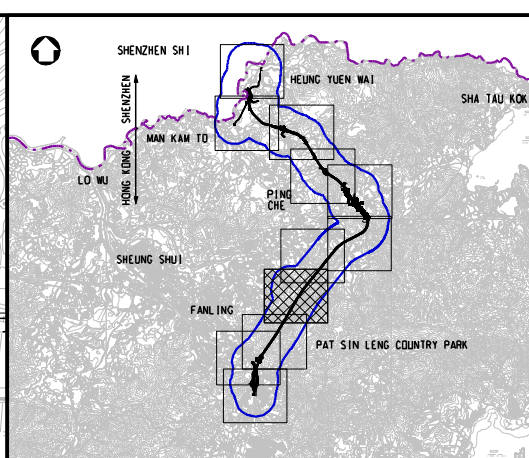
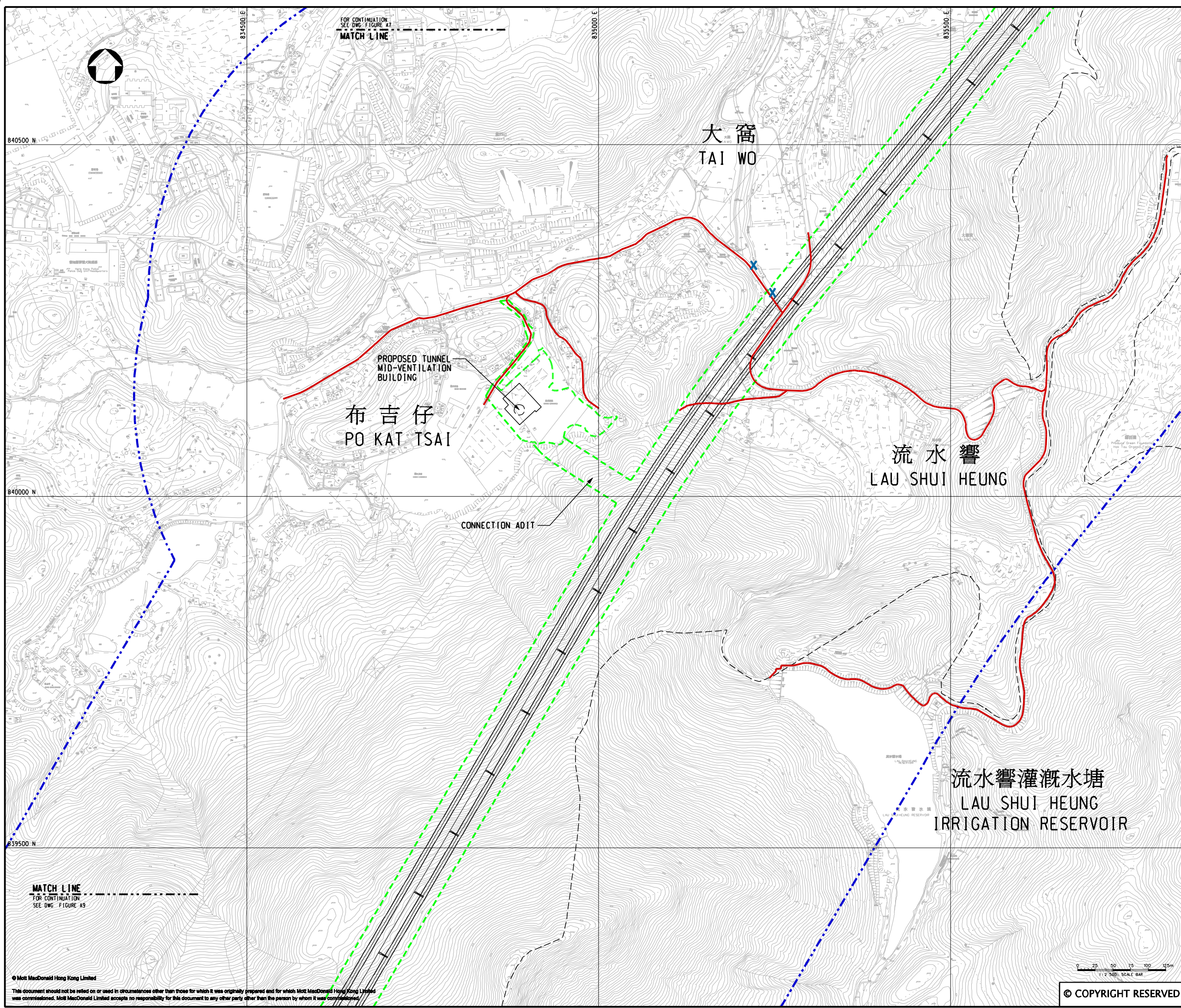
AGREEMENT NO. CE45/2008(CE)
LIANTANG/HEUNG YUEN WAI BOUNDARY
CONTROL POINT AND ASSOCIATED WORKS

Title

ECOLOGICAL SURVEY LOCATIONS
AND STUDY BOUNDARY
(SHEET 7 OF 11)

Designed	GC	Eng.Chk.	EC
Drawn	MING	Coordination	EC
Dwg.Chk.	GC	Approved	HT
Scale at A1	Project	Status	
1:2500	255228	PRE	
Drawing No	FIGURE A7	Rev	P5

© COPYRIGHT RESERVED



KEY PLAN
SCALE 1:100000

LEGEND:

- 500m ASSESSMENT AREA
- WORKS AREA
- TRANSECT ROUTE FOR BIRDS, MAMMALS, INSECTS AND HERPETOFAUNA SURVEY
- FRESHWATER FISH SURVEY

P5	OCT 10	MING	GENERAL REVISION	GC	HT
P4	SEP 10	MING	GENERAL REVISION	GC	HT
P3	AUG 10	MING	GENERAL REVISION	GC	HT
P2	JUL 10	MING	GENERAL REVISION	GC	HT
P1	APR 10	MING	FIRST ISSUE	GC	HT
Rev	Date	Drawn	Description	Ch'k'd	App'd

Mott MacDonald

20/F Two Landmark East
100 How Ming Street
Kowloon, Kowloon
Hong Kong
T +852 2828 5757
F +852 2827 1823
W www.mottmac.com.hk

CEDD

**CIVIL ENGINEERING
AND DEVELOPMENT
DEPARTMENT**

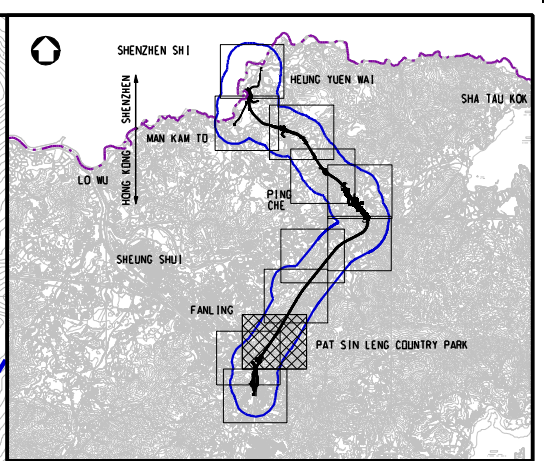
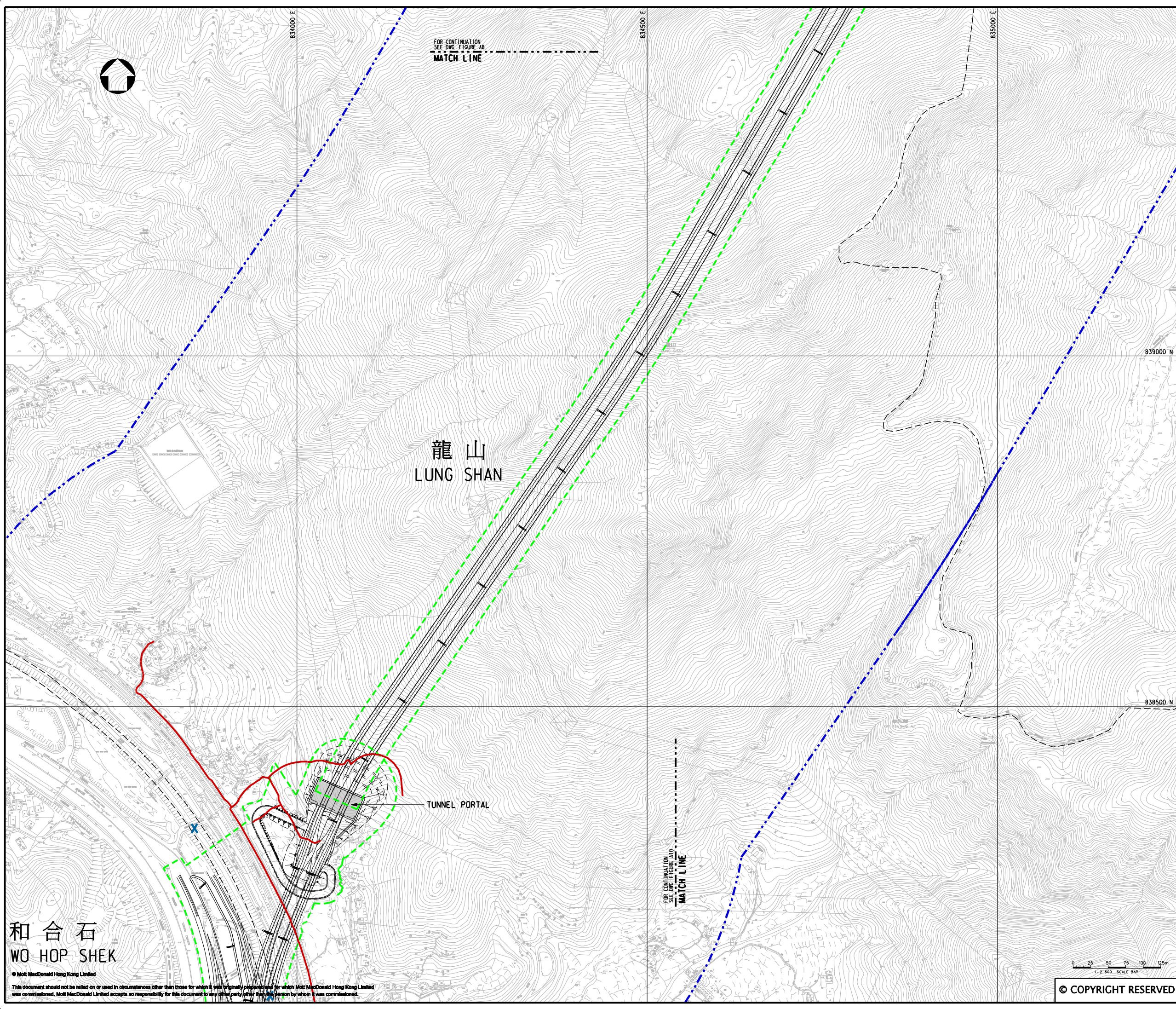
Project

AGREEMENT NO. CE45/2008(CE)
LIANTANG/HEUNG YUEN WAI BOUNDARY
CONTROL POINT AND ASSOCIATED WORKS

Title

ECOLOGICAL SURVEY LOCATIONS
AND STUDY BOUNDARY
(SHEET 8 OF 11)

Designed	GC	Eng.Chk.	EC	
Drawn	MING	Coordination	EC	
Dwg.Chk.	GC	Approved	HT	
Scale at A1	Project	255228	Status	
1:2500	CAD file	h:\255228\report\env\env\0105\FIG A8.dgn	PRE	
Drawing No	FIGURE A8	Rev	P5	




KEY PLAN
SCALE 1:100000

LEGEND:

- 500m ASSESSMENT AREA
- WORKS AREA
- TRANSECT ROUTE FOR BIRDS, MAMMALS, INSECTS AND HERPETOFAUNA SURVEY

P5	OCT 10	MING	GENERAL REVISION	GC	HT
P4	SEP 10	MING	GENERAL REVISION	GC	HT
P3	AUG 10	MING	GENERAL REVISION	GC	HT
P2	JUL 10	MING	GENERAL REVISION	GC	HT
P1	APR 10	MING	FIRST ISSUE	GC	HT
Rev	Date	Drawn	Description	Ch'k'd	App'd



Mott MacDonald

20/F Two Landmark East
100 How Ming Street
Kowloon
Hong Kong
T +852 2828 5757
F +852 2827 1823
W www.mottmac.com.hk

Client



**CIVIL ENGINEERING
AND DEVELOPMENT
DEPARTMENT**

Project

AGREEMENT NO. CE45/2008(CE)
LIANTANG/HEUNG YUEN WAI BOUNDARY
CONTROL POINT AND ASSOCIATED WORKS

Title

ECOLOGICAL SURVEY LOCATIONS
AND STUDY BOUNDARY
(SHEET 9 OF 11)

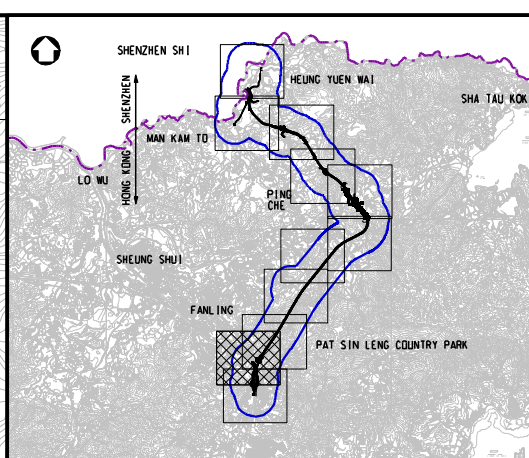
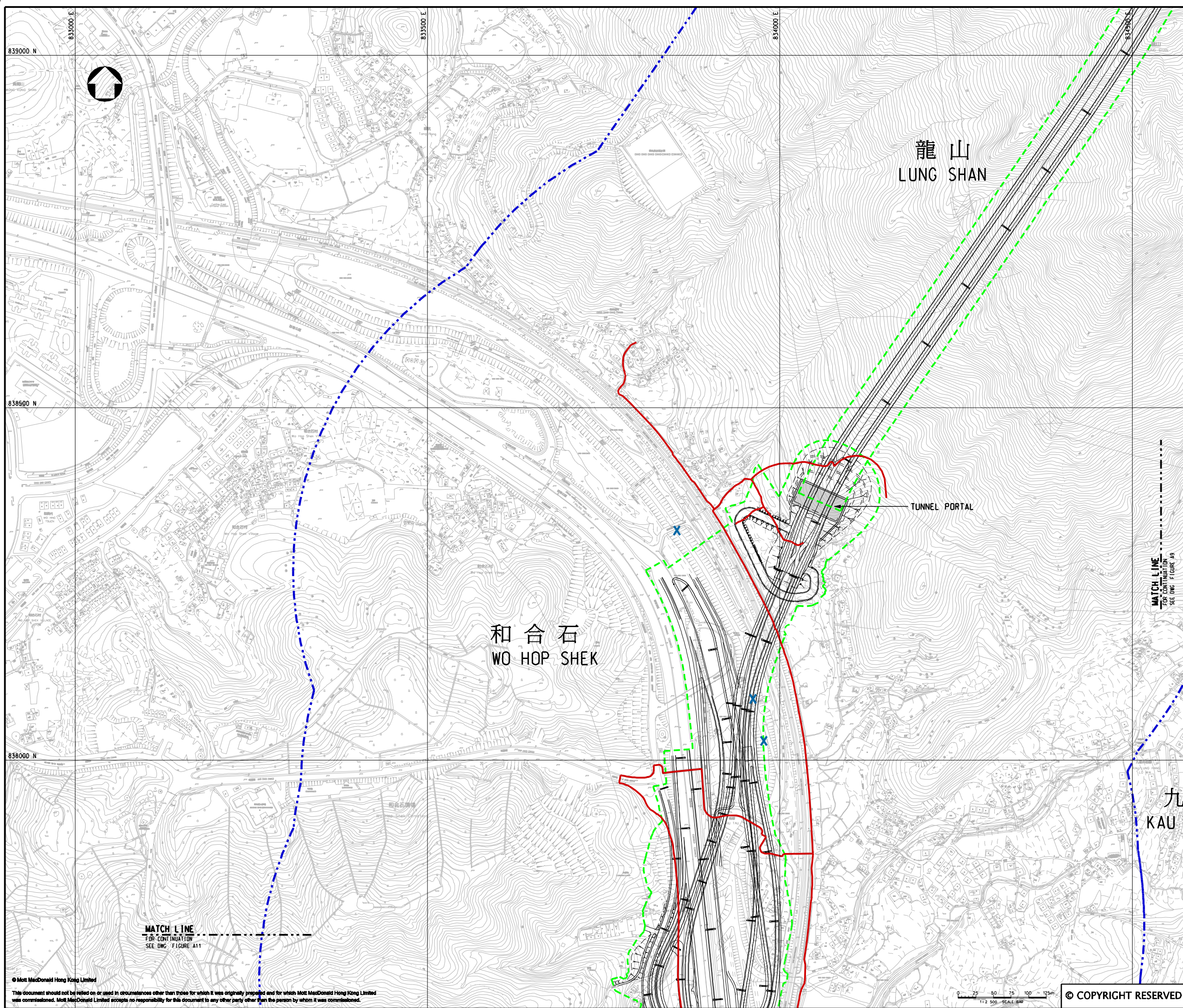
Designed	GC	Eng.Chk.	EC	
Drawn	MING	Coordination	EC	
Dwg.Chk.	GC	Approved	HT	
Scale at A1	Project	255228	Status	
1:2500	CAD file	h:\255228\report\env\velo\0105\FIG A9.dgn	PRE	
Drawing No	FIGURE A9	Rev	P5	

和合石
WO HOP SHEK

© Mott MacDonald Hong Kong Limited
This document should not be relied on or used in circumstances other than those for which it was originally prepared and for which Mott MacDonald Hong Kong Limited was commissioned. Mott MacDonald Limited accepts no responsibility for this document to any other party with which Mott MacDonald has been or is to be commissioned.

0 25 50 75 100 125m
1:2 500 SCALE BAR

© COPYRIGHT RESERVED



KEY PLAN
SCALE 1:100000

LEGEND:

- 500m ASSESSMENT AREA
- WORKS AREA
- TRANSECT ROUTE FOR BIRDS, MAMMALS, INSECTS AND HERPETOFAUNA SURVEY
- FRESHWATER FISH SURVEY

P5	OCT 10	MING	GENERAL REVISION	GC	HT
P4	SEP 10	MING	GENERAL REVISION	GC	HT
P3	AUG 10	MING	GENERAL REVISION	GC	HT
P2	JUL 10	MING	GENERAL REVISION	GC	HT
P1	APR 10	MING	FIRST ISSUE	GC	HT
Rev	Date	Drawn	Description	Ch'k'd	App'd

Mott MacDonald

20/F Two Landmark East
100 How Ming Street
Kowloon Tong, Kowloon
Hong Kong
T +852 2828 5757
F +852 2827 1823
W www.mottmac.com.hk

CEDD

**CIVIL ENGINEERING
AND DEVELOPMENT
DEPARTMENT**

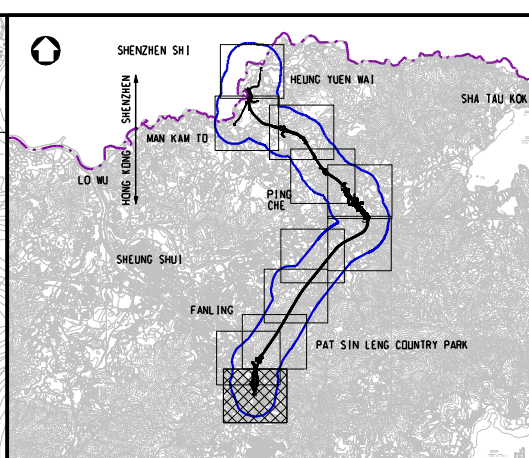
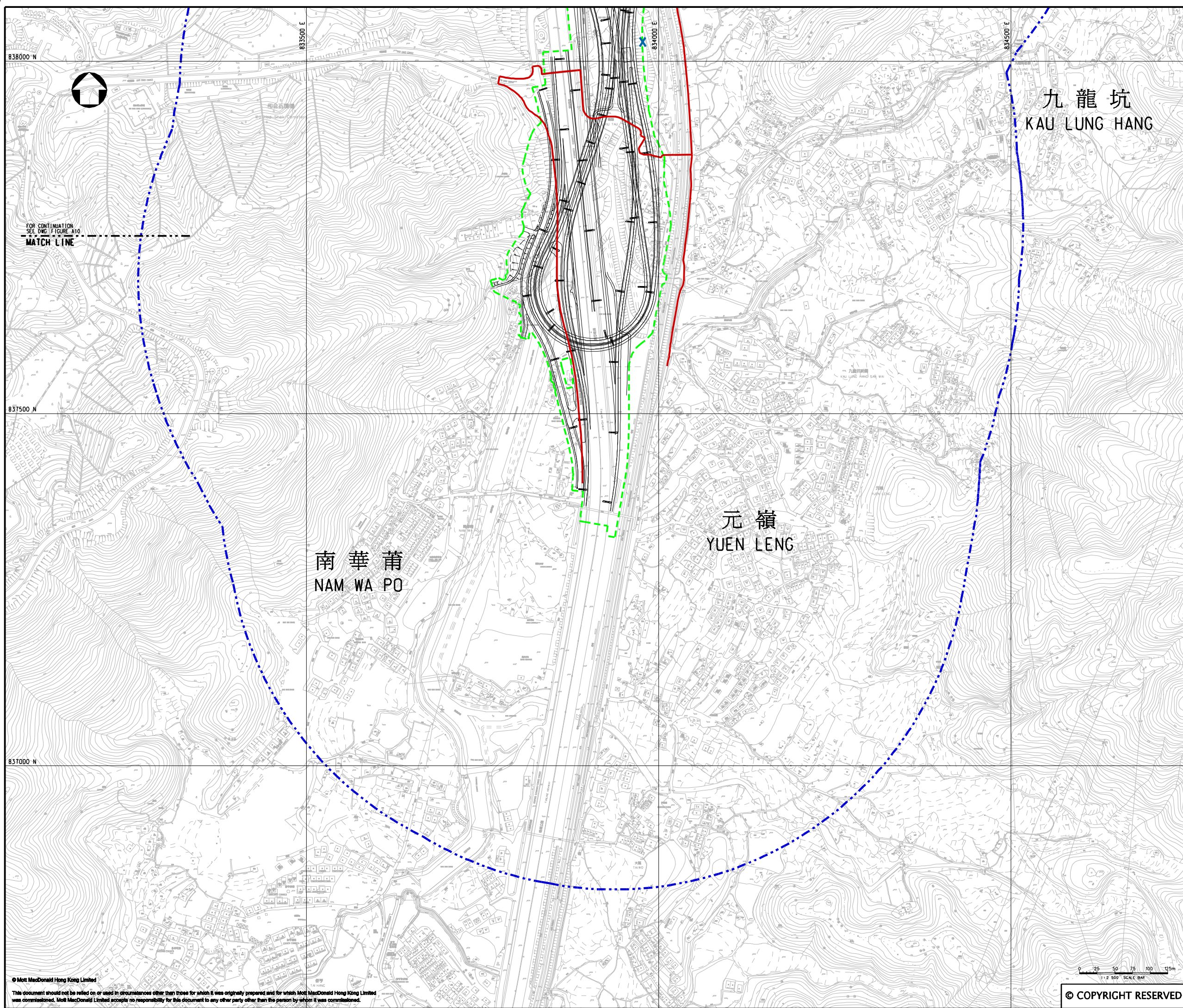
Project

AGREEMENT NO. CE45/2008(CE)
LIANTANG/HEUNG YUEN WAI BOUNDARY
CONTROL POINT AND ASSOCIATED WORKS

Title

ECOLOGICAL SURVEY LOCATIONS
AND STUDY BOUNDARY
(SHEET 10 OF 11)

Designed	GC	Eng.Chk.	EC
Drawn	MING	Coordination	EC
Dwg.Chk.	GC	Approved	HT
Scale at A1	Project	Status	
1:2500	255228	PRE	
Drawing No	FIGURE A10	Rev	P5



- KEY PLAN**
SCALE 1:100000
- LEGEND:**
- 500m ASSESSMENT AREA
 - WORKS AREA
 - TRANSECT ROUTE FOR BIRDS, MAMMALS, INSECTS AND HERPETOFAUNA SURVEY
 - FRESHWATER FISH SURVEY


P5	OCT 10	MING	GENERAL REVISION	GC	HT
P4	SEP 10	MING	GENERAL REVISION	GC	HT
P3	AUG 10	MING	GENERAL REVISION	GC	HT
P2	JUL 10	MING	GENERAL REVISION	GC	HT
P1	APR 10	MING	FIRST ISSUE	GC	HT
Rev	Date	Drawn	Description	Ch'k'd	App'd



Mott MacDonald

20/F Two Landmark East
100 How Ming Street
Kowloon
Hong Kong
T +852 2828 5757
F +852 2827 1823
W www.mottmac.com.hk

Client



**CIVIL ENGINEERING
AND DEVELOPMENT
DEPARTMENT**

Project
AGREEMENT NO. CE45/2008(CE)
LIANTANG/HEUNG YUEN WAI BOUNDARY
CONTROL POINT AND ASSOCIATED WORKS

Title
ECOLOGICAL SURVEY LOCATIONS
AND STUDY BOUNDARY
(SHEET 11 OF 11)

Designed	GC	Eng.Chk.	EC
Drawn	MING	Coordination	EC
Dwg.Chk.	GC	Approved	HT
Scale at A1	Project	255228	Status
1:2500	CAD file	h:\255228\report\env\velo\0105\FIG A11.dgn	PRE
Drawing No	FIGURE A11	Rev	P5

© COPYRIGHT RESERVED