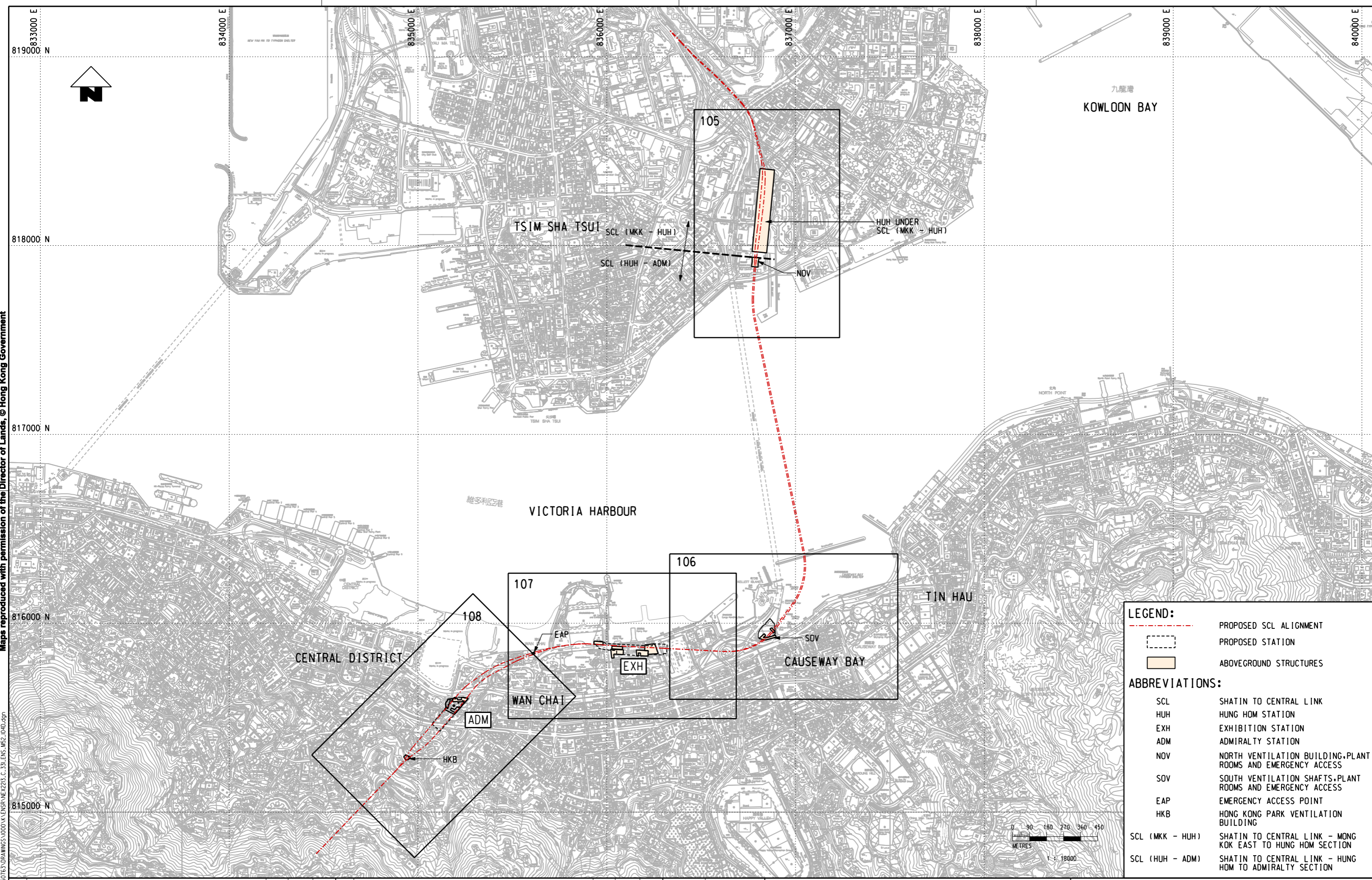


Maps reproduced with permission of the Director of Lands, © Hong Kong Government

PLOT DRW: F:\mtr\p1\OTDRIVER\WINDOWS\33 COL\016.dgn
 MODELNAME: NEX2213_C_331_ENS_M52_104.dgn
 FILENAME: NEX2213_C_331_ENS_M52_104.dgn
 DATE: 07/SEP/2011
 TIME: 10:34:27

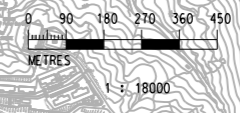


LEGEND:

- - - PROPOSED SCL ALIGNMENT
- PROPOSED STATION
- ABOVEGROUND STRUCTURES

ABBREVIATIONS:

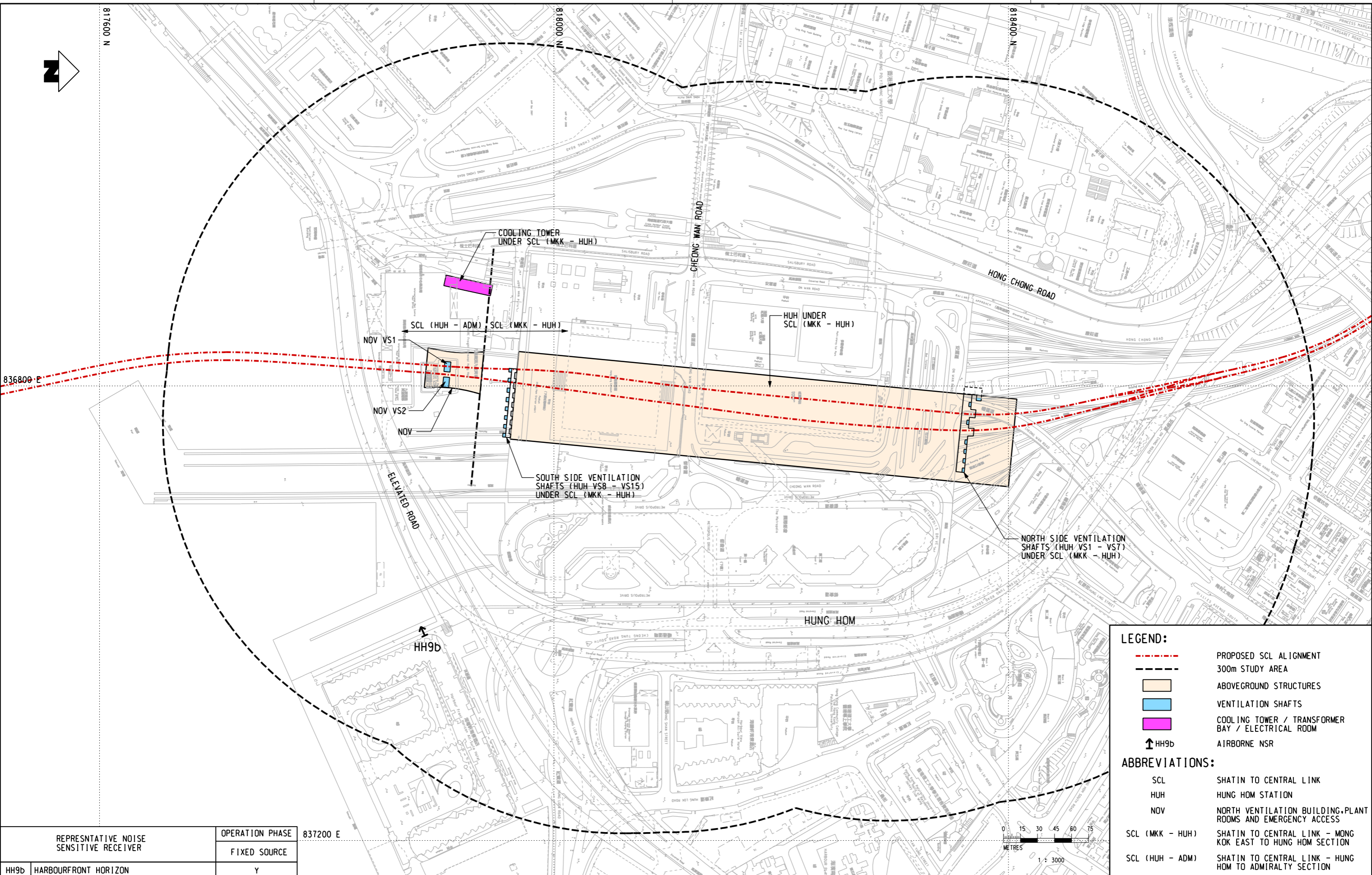
SCL	SHATIN TO CENTRAL LINK
HUH	HUNG HOM STATION
EXH	EXHIBITION STATION
ADM	ADMIRALTY STATION
NOV	NORTH VENTILATION BUILDING, PLANT ROOMS AND EMERGENCY ACCESS
SOV	SOUTH VENTILATION SHAFTS, PLANT ROOMS AND EMERGENCY ACCESS
EAP	EMERGENCY ACCESS POINT
HKB	HONG KONG PARK VENTILATION BUILDING
SCL (MKK - HUH)	SHATIN TO CENTRAL LINK - MONG KOK EAST TO HUNG HOM SECTION
SCL (HUH - ADM)	SHATIN TO CENTRAL LINK - HUNG HOM TO ADMIRALTY SECTION



REV	DESCRIPTION	BY	DATE	APPROVED	REV	DESCRIPTION	BY	DATE	APPROVED

DRAWN	YJP	 SHATIN TO CENTRAL LINK
DESIGNED	---	
CHECKED	LCR	
APPROVED	---	
DATE	07/SEP/2011	
<small>DO NOT SCALE DRAWINGS. ALL DIMENSIONS SHALL BE VERIFIED ON SITE. © MTR CORPORATION LIMITED 2008. COPYRIGHT IN RESPECT OF THIS DRAWING / DOCUMENT IS OWNED BY THE MTR CORPORATION LIMITED OF HONG KONG. NO REPRODUCTION OF THE DRAWING / DOCUMENT OR ANY PART BY WHATEVER MEANS IS PERMITTED WITHOUT THE PRIOR WRITTEN CONSENT OF THE MTR CORPORATION LIMITED.</small>		ORIGINATOR
CADD REF.		NEX2213_C_331_ENS_M52_104.dgn

TITLE		NEX/2213	
EIA STUDY FOR SCL (HUH - ADM)		KEY PLAN OF LOCATION OF FIXED PLANT NOISE SOURCES	
SCALE	FIGURE NO.	REV.	
1 : 18000 (A3)	NEX2213/C/331/ENS/M52/104	D	



LEGEND:

- - - - - PROPOSED SCL ALIGNMENT
- 300m STUDY AREA
- ABOVEGROUND STRUCTURES
- VENTILATION SHAFTS
- COOLING TOWER / TRANSFORMER BAY / ELECTRICAL ROOM
- ↑ HH9b AIRBORNE NSR

ABBREVIATIONS:

- SCL SHATIN TO CENTRAL LINK
- HUH HUNG HOM STATION
- NOV NORTH VENTILATION BUILDING, PLANT ROOMS AND EMERGENCY ACCESS
- SCL (MKK - HUH) SHATIN TO CENTRAL LINK - MONG KOK EAST TO HUNG HOM SECTION
- SCL (HUH - ADM) SHATIN TO CENTRAL LINK - HUNG HOM TO ADMIRALTY SECTION

REPRESENTATIVE NOISE SENSITIVE RECEIVER		OPERATION PHASE	837200 E
HH9b HARBOURFRONT HORIZON		FIXED SOURCE	
		Y	

REV	DESCRIPTION	BY	DATE	APPROVED	REV	DESCRIPTION	BY	DATE	APPROVED

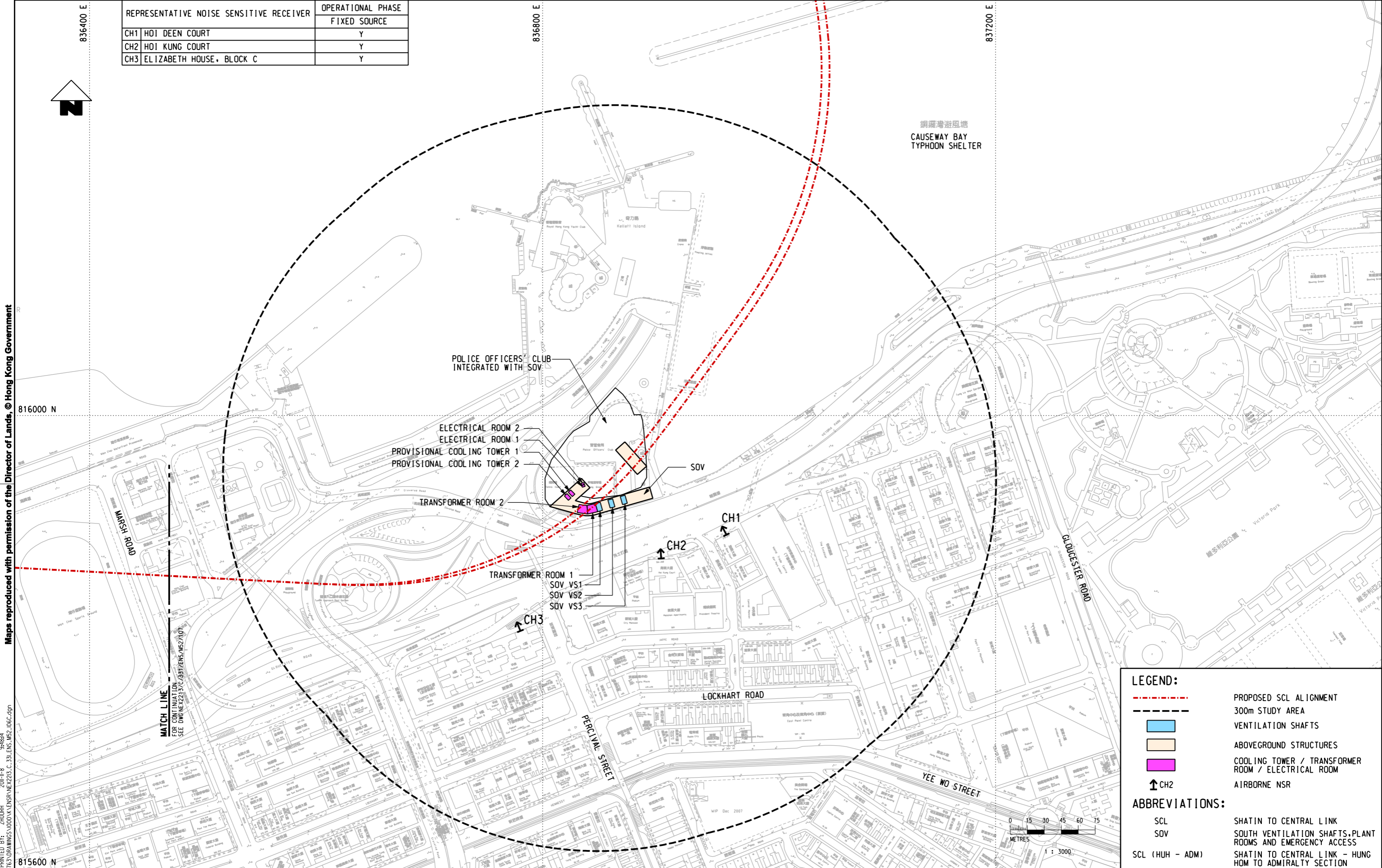
DRAWN	YJP		SHATIN TO CENTRAL LINK
DESIGNED	---		
CHECKED	LCR		
APPROVED	---		
DATE	02/NOV/2010	ORIGINATOR	
DO NOT SCALE DRAWINGS. ALL DIMENSIONS SHALL BE VERIFIED ON SITE. © MTR CORPORATION LIMITED 2008. COPYRIGHT IN RESPECT OF THIS DRAWING / DOCUMENT IS OWNED BY THE MTR CORPORATION LIMITED OF HONG KONG. NO REPRODUCTION OF THE DRAWING / DOCUMENT OR ANY PART BY WHATEVER MEANS IS PERMITTED WITHOUT THE PRIOR WRITTEN CONSENT OF THE MTR CORPORATION LIMITED.			
CADD REF.	NEX2213_C_331_ENS_M52_105B.dgn		

TITLE		NEX/2213 EIA STUDY FOR SCL (HUH - ADM) LOCATION OF FIXED PLANT NOISE SOURCES	
SCALE	1 : 3000 (A3)	FIGURE NO.	NEX2213/C/331/ENS/M52/105
REV.	B		

REPRESENTATIVE NOISE SENSITIVE RECEIVER	OPERATIONAL PHASE
CH1	FIXED SOURCE
HOI DEEN COURT	Y
HOI KUNG COURT	Y
ELIZABETH HOUSE, BLOCK C	Y



Maps reproduced with permission of the Director of Lands, © Hong Kong Government

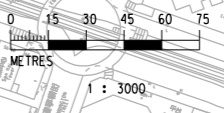


LEGEND:

- - - - - PROPOSED SCL ALIGNMENT
- 300m STUDY AREA
- VENTILATION SHAFTS
- ABOVEGROUND STRUCTURES
- COOLING TOWER / TRANSFORMER ROOM / ELECTRICAL ROOM
- ↑ CH2 AIRBORNE NSR

ABBREVIATIONS:

- SCL SHATIN TO CENTRAL LINK
- SOV SOUTH VENTILATION SHAFTS, PLANT ROOMS AND EMERGENCY ACCESS
- SCL (HUH - ADM) SHATIN TO CENTRAL LINK - HUNG HOM TO ADMIRALTY SECTION



REV	DESCRIPTION	BY	DATE	APPROVED	REV	DESCRIPTION	BY	DATE	APPROVED

DRAWN	YJP
DESIGNED	---
CHECKED	LCR
APPROVED	---
DATE	08/NOV/2011

MTR

SHATIN TO CENTRAL LINK

AECOM

CADD REF. NEX2213_C_331_ENS_M52_106C.dgn

TITLE		NEX/2213	
EIA STUDY FOR SCL (HUH - ADM)		LOCATION OF FIXED PLANT NOISE SOURCES	
SCALE	FIGURE NO.	REV.	
1 : 3000 (A3)	NEX2213/C/331/ENS/M52/106	C	

PLOT DRW: R:\us\mset\NTR\PI\DRIVER\WINDOWS\3 COLOR\A3.dwg
 MODEL NAME: NEX2213_C_331_ENS_M52_106C.dgn
 FILE NAME: NEX2213_C_331_ENS_M52_106C.dgn

REPRESENTATIVE NOISE SENSITIVE RECEIVER	OPERATIONAL PHASE
EX1 CAUSEWAY CENTRE, BLOCK A	FIXED SOURCE
	Y



835600 E

836000 E

836400 E

816000 N

815600 N

Maps reproduced with permission of the Director of Lands, © Hong Kong Government

EAP

CONVENTION AVENUE

PLANT BUILDING

PLANT BUILDING

維多利亞港
VICTORIA HARBOUR

EXH VS2
EXH VS1

EXH VS3
EXH VS4
EXH VS5

EXH VS9
EXH VS12

EXH VS17

EXH VS21
EXH VS22
EXH VS18
EXH VS23
EXH VS24
EXH VS25

EXH VS19

EXH VS6
EXH VS8

EXH VS13
EXH VS11
EXH VS10
EXH VS14

EXH VS26
EXH VS20

EXH ENTRANCE B

EXH VS16

EXH ENTRANCE A

EXH VS15

GLOUCESTER ROAD

STEWART ROAD

LEGEND:

- - - PROPOSED SCL ALIGNMENT
- 300m STUDY AREA
- VENTILATION SHAFTS
- ABOVEGROUND STRUCTURES
- PROPOSED STATION
- EX1
- AIRBORNE NSR

ABBREVIATIONS:

- SCL SHATIN TO CENTRAL LINK
- EXH EXHIBITION STATION
- EAP EMERGENCY ACCESS POINT
- SCL (HUH - ADM) SHATIN TO CENTRAL LINK - HUNG HOM TO ADMIRALTY SECTION



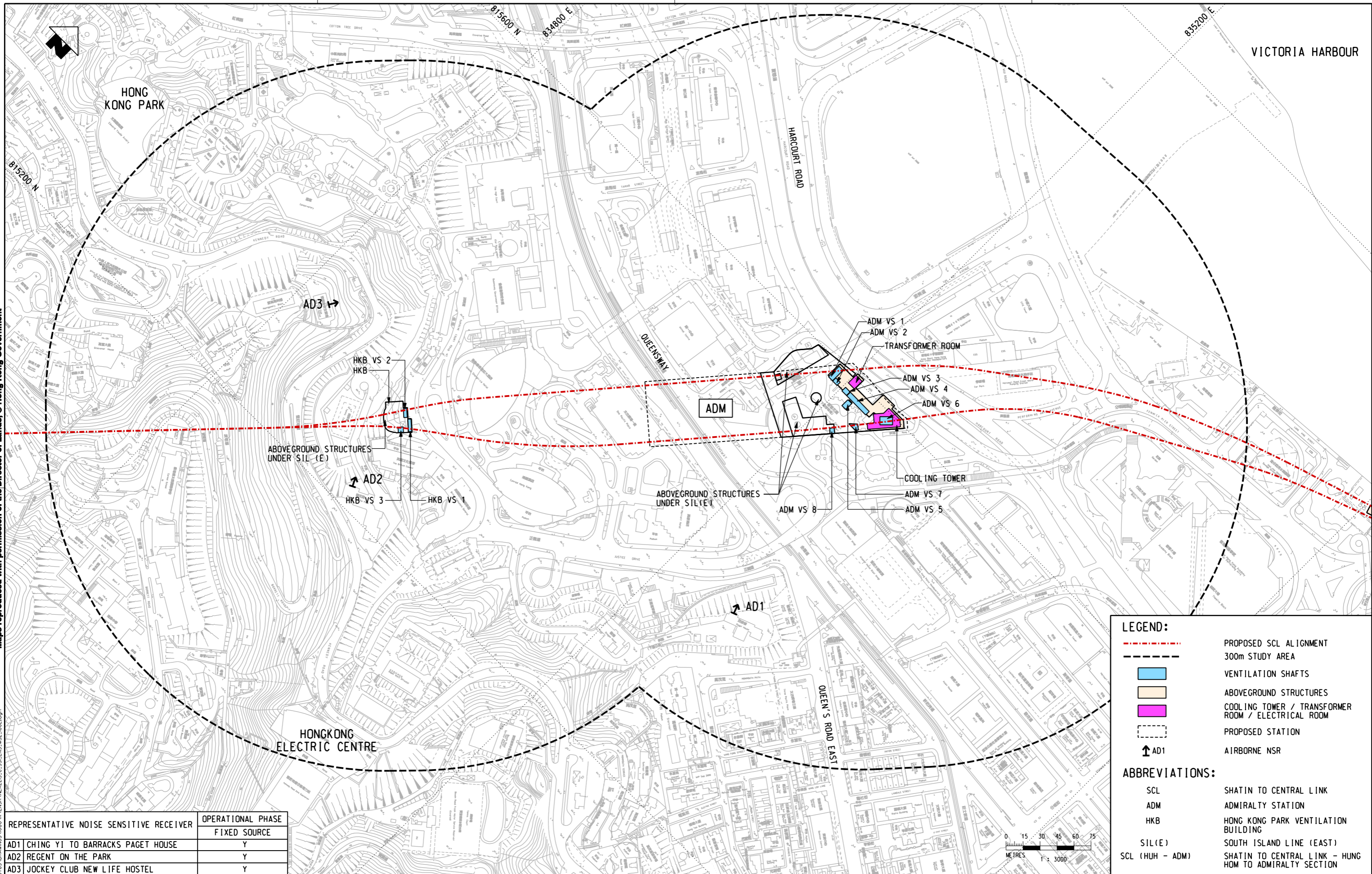
MATCH LINE
FOR CONTINUATION
SEE DWG NEX2213/C/331/ENS/M52/106

PLOT DWN: F:\us\inset\NTR\PL\DRIVER\WINDOWS\33_C0C0UR.dgn
MODEL NAME: NEX2213_C_331_ENS_M52_107C.dgn
FILE NAME: NEX2213_C_331_ENS_M52_107C.dgn

				DRAWN YJP DESIGNED --- CHECKED LCR APPROVED --- DATE 02/AUG/2011				 SHATIN TO CENTRAL LINK 				TITLE NEX/2213 EIA STUDY FOR SCL (HUH - ADM) LOCATION OF FIXED PLANT NOISE SOURCES			
				ORIGINATOR AECOM				SCALE 1 : 3000 (A3)							
				CADD REF. NEX2213_C_331_ENS_M52_107C.dgn				FIGURE NO. NEX2213/C/331/ENS/M52/107							
								REV. C							

Maps reproduced with permission of the Director of Lands, © Hong Kong Government

PLOT DRY: R:\us\msh\mtr\p\d\DRIVER\WINDOWS\X3\COL\0108.dgn
 MODEL NAME: NEX2213_C_331_ENS_M52_108E.dgn
 FILE NAME: NEX2213_C_331_ENS_M52_108E.dgn



LEGEND:

- - - PROPOSED SCL ALIGNMENT
- 300m STUDY AREA
- VENTILATION SHAFTS
- ABOVEGROUND STRUCTURES
- COOLING TOWER / TRANSFORMER ROOM
- PROPOSED STATION
- ↑ AD1 AIRBORNE NSR

ABBREVIATIONS:

- SCL SHATIN TO CENTRAL LINK
- ADM ADMIRALTY STATION
- HKB HONG KONG PARK VENTILATION BUILDING
- SIL(E) SOUTH ISLAND LINE (EAST)
- SCL (HUH - ADM) SHATIN TO CENTRAL LINK - HUNG HOM TO ADMIRALTY STATION

REPRESENTATIVE NOISE SENSITIVE RECEIVER	OPERATIONAL PHASE	
	DATE	FIXED SOURCE
AD1 CHING YI TO BARRACKS PAGET HOUSE	Y	
AD2 REGENT ON THE PARK	Y	
AD3 JOCKEY CLUB NEW LIFE HOSTEL	Y	

REV	DESCRIPTION	BY	DATE	APPROVED	REV	DESCRIPTION	BY	DATE	APPROVED

DRAWN: YJP DESIGNED: --- CHECKED: LCR APPROVED: --- DATE: 08/NOV/2011	
ORIGINATOR: AECOM CADD REF: NEX2213_C_331_ENS_M52_108E.dgn	

TITLE
 NEX/2213
 EIA STUDY FOR SCL (HUH - ADM)
 LOCATION OF FIXED PLANT NOISE SOURCES

SCALE
 1 : 3000 (A3)

FIGURE NO.
 NEX2213/C/331/ENS/M52/108

REV.
 E