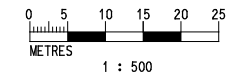


**KEY PLAN**  
SCALE 1:5000

- NOTES**
1. ALL DIMENSIONS ARE IN MILLIMETER UNLESS OTHERWISE STATED.
  2. COORDINATES ARE BASED ON THE HONG KONG METRIC GRID (1980).
  3. LEVELS REFER TO PRINCIPAL DATUM (P.D.) UNLESS SHOWN OTHERWISE.
  4. ALL LEVELS SHOWN ON DRAWINGS ARE SUBJECT TO CONFIRMATION ON SITE.
  5. PROPOSED BARRIERS UNDER SCL (TAW - HUH) ARE NOT REQUIRED IF EXISTING RETAINING WALL ACHIEVES THE HEIGHT OF THE PROPOSED BARRIERS.

- LEGEND**
- EXISTING TRACK ALIGNMENT
  - - - PROPOSED TRACK ALIGNMENT
  - PROPOSED GAZETTE BOUNDARY FOR RAILWAY DEVELOPMENT
  - - - PROPOSED HIK STATION
  - MOL RW7 — EXISTING RETAINING WALL MOL RW7
  - MOL RW5 — EXISTING RETAINING WALL MOL RW5
  - MOL RW2D — EXISTING RETAINING WALL MOL RW2D
  - MOL RW3A — EXISTING RETAINING WALL MOL RW3A
  - P1 — 2M HIGH NOISE BARRIER FROM UP TRACK LEVEL OF SCL (TAW-HUH)
  - P2 — 2M HIGH NOISE BARRIER FROM DOWN TRACK LEVEL OF SCL (TAW - HUH)
  - P3 — 3M HIGH NOISE BARRIER FROM DOWN TRACK LEVEL OF SCL (TAW - HUH)
  - P4 — 7M HIGH NOISE BARRIER FROM TAIL TRACK T2 OF TAW
  - P5 — 3M HIGH NOISE BARRIER FROM UP TRACK LEVEL OF SCL (TAW - HUH)



C:\Program Files\Bentley\Workspace\system\plotdrv\printrc.plt  
 PLOT DRW: HIK1102.dwg  
 MODEL\$: HIK1102.dwg  
 FILENAME: C:\temp\project\254545\arrangings\for\Final\1102\Appendix\_6\1102\_2010.dwg  
 PRINTED BY: HIK1102.dwg  
 DATE: 11/10/2011 9:59:25 AM

REV	DESCRIPTION	BY	DATE	APPROVED
B	RESPONSE TO MTR'S COMMENT	ES	10SEP10	WC
A	FIRST ISSUE	ES	17AUG10	WC

DRAWN	HXF
DESIGNED	ES
CHECKED	PC
APPROVED	WC
DATE	17/AUG/2010

**MTR**

**SHATIN TO CENTRAL LINK**

ORIGINATOR: Scott Wilson Ltd  
 偉信顧問集團有限公司

DO NOT SCALE DRAWINGS. ALL DIMENSIONS SHALL BE VERIFIED ON SITE.  
 © MTR CORPORATION LIMITED 2008. COPYRIGHT IN RESPECT OF THIS DRAWING / DOCUMENT IS OWNED BY THE MTR CORPORATION LIMITED OF HONG KONG. NO REPRODUCTION OF THE DRAWING / DOCUMENT OR ANY PART BY WHATEVER MEANS IS PERMITTED WITHOUT THE PRIOR WRITTEN CONSENT OF THE MTR CORPORATION LIMITED.

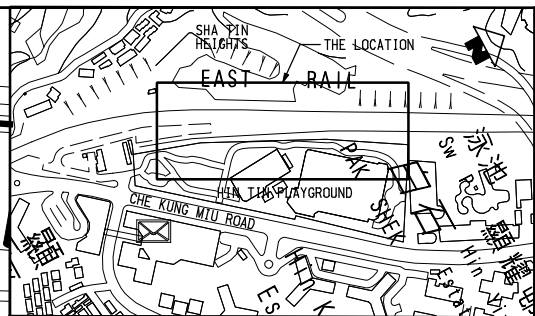
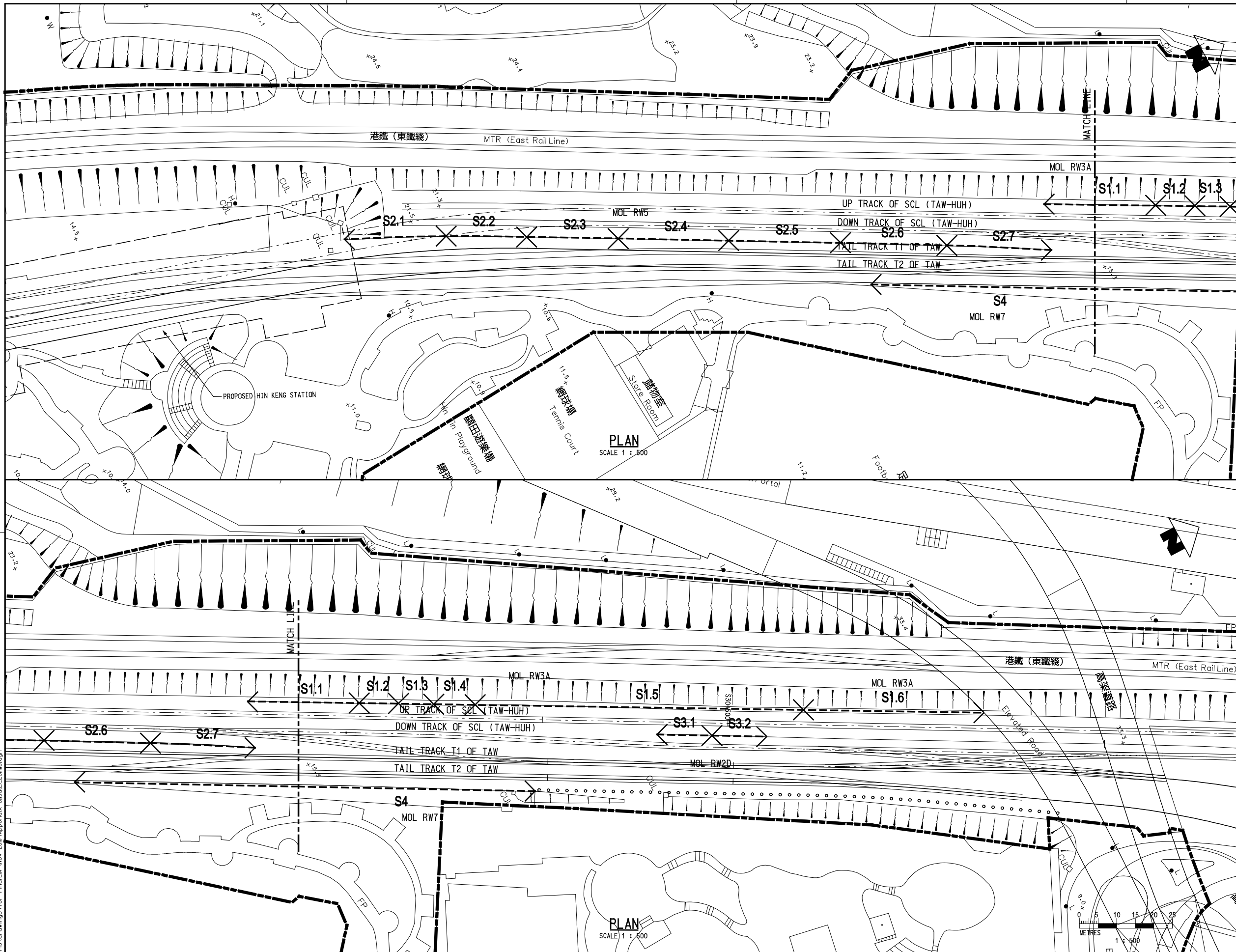
CADD REF. \$FILE\$

**CONTRACT 1102**  
**HIN KENG STATION**  
**GENERAL ARRANGEMENT**  
**PROPOSED NOISE BARRIERS AND ASSOCIATED RETAINING WALLS**  
**(SHEET 1 OF 2)**

SCALE: AS SHOWN  
 1 : 500

DRAWING NO. 1102/P/HIK/SWL/C10/301

REV. B



**KEY PLAN**  
SCALE 1:5000

- NOTES**
1. ALL DIMENSIONS ARE IN MILLIMETER UNLESS OTHERWISE STATED.
  2. COORDINATES ARE BASED ON THE HONG KONG METRIC GRID (1980).
  3. LEVELS REFER TO PRINCIPAL DATUM (P.D.) UNLESS SHOWN OTHERWISE.
  4. ALL LEVELS SHOWN ON DRAWINGS ARE SUBJECT TO CONFIRMATION ON SITE.
  5. PROPOSED BARRIERS UNDER SCL (TAW - HUH) ARE NOT REQUIRED IF EXISTING RETAINING WALL ACHIEVES THE HEIGHT OF THE PROPOSED BARRIERS.

- LEGEND**
- EXISTING TRACK ALIGNMENT
  - - - PROPOSED TRACK ALIGNMENT
  - PROPOSED GAZETTE BOUNDARY FOR RAILWAY DEVELOPMENT
  - - - PROPOSED HIK STATION
  - - - REGION WHERE MOL EXISTING WALL & SCL PROPOSED BARRIER OVERLAP

Section I.D.	Approximate Height of Existing Retaining Wall (m)	Height of Proposed Noise Barrier on top of Retaining Wall (m)	Remarks
S1.1	1	1	
S1.2	2	0	
S1.3	3	0	Refer to P1
S1.4	4	0	
S1.5	5	0	
S1.6	4	0	Refer to P5
S2.1	1.5	1.5	
S2.2	1.5	1.5	
S2.3	1.5	1.5	
S2.4	1.5	1.5	Refer to P3
S2.5	1.5	1.5	
S2.6	1.5	1.5	
S2.7	1.5	1.5	
S3.1	2	0	Refer to P2
S3.2	3	0	
S4	1	6	Refer to P4

REV	DESCRIPTION	BY	DATE	APPROVED
B	RESPONSE TO MTR'S COMMENT	ES	10SEP10	WC
A	FIRST ISSUE	ES	17AUG10	WC

BY	DATE	APPROVED	DESCRIPTION
ES	10SEP10	WC	
ES	17AUG10	WC	

DO NOT SCALE DRAWINGS. ALL DIMENSIONS SHALL BE VERIFIED ON SITE.  
 © MTR CORPORATION LIMITED 2008. COPYRIGHT IN RESPECT OF THIS DRAWING / DOCUMENT IS OWNED BY THE MTR CORPORATION LIMITED OF HONG KONG. NO REPRODUCTION OF THE DRAWING / DOCUMENT OR ANY PART BY WHATEVER MEANS IS PERMITTED WITHOUT THE PRIOR WRITTEN CONSENT OF THE MTR CORPORATION LIMITED.

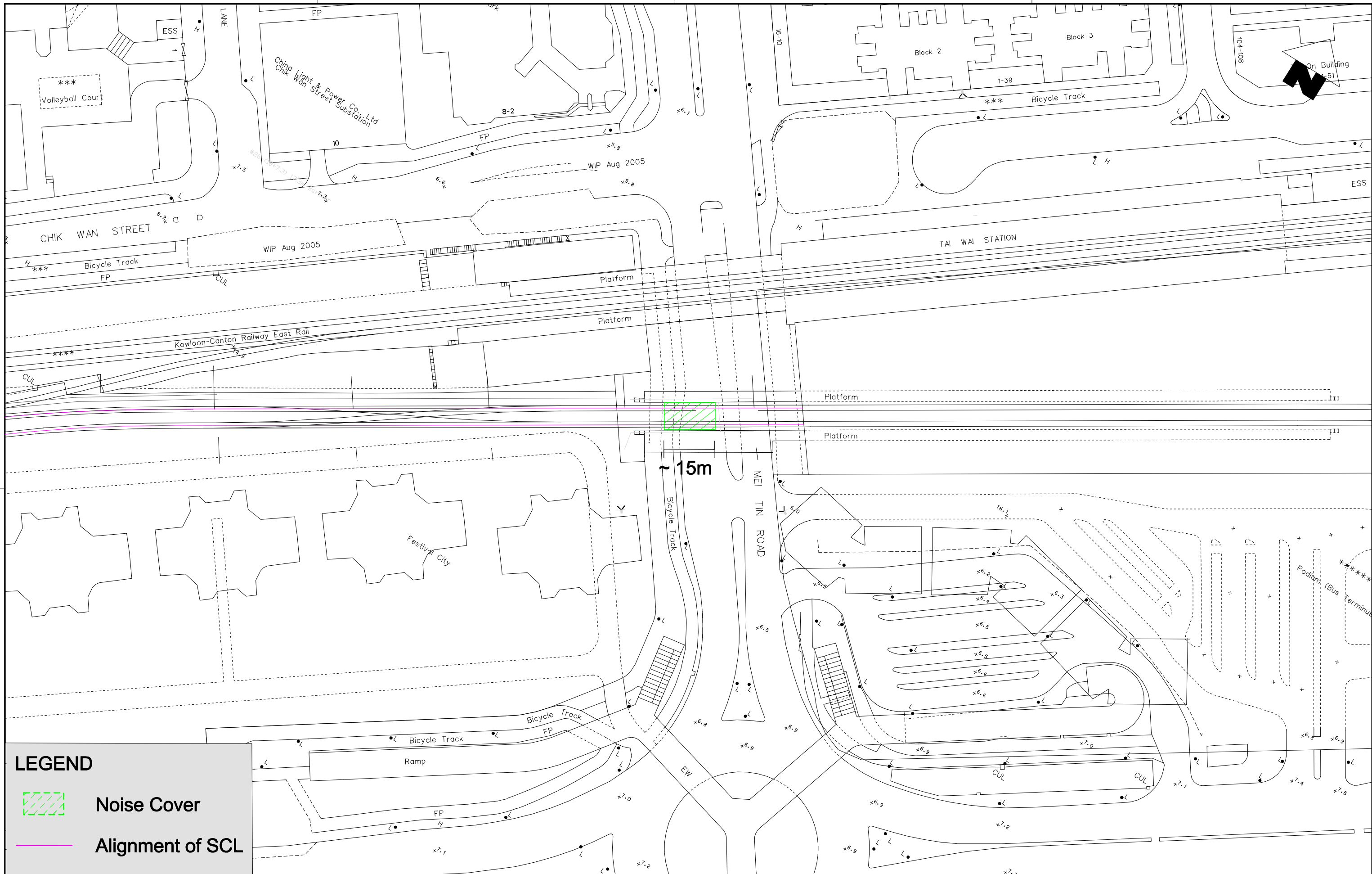
**MTR**  
 SHATIN TO CENTRAL LINK  
 Scott Wilson Ltd  
 偉信顧問集團有限公司

ORIGINATOR  
 CADD REF. \$FILEA\$

**CONTRACT 1102**  
**HIN KENG STATION**  
 GENERAL ARRANGEMENT  
 PROPOSED NOISE BARRIERS AND ASSOCIATED RETAINING WALLS  
 (SHEET 2 OF 2)

SCALE: 1:500  
 DRAWING NO. 1102/P/HIK/SWL/C10/302  
 REV. B

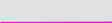
C:\Program Files\Bentley\Workspace\system\plotdrv\pr\trac.plt  
 PLOT DRW: 11/10/2011 9:59:57 AM  
 MODEL\$: HIKR1010A  
 MODELNAME: HIKR1010A  
 FILENAME: C:\temp\project\254545\arrangings\for\Final\A (Nov 2011)\Appendix\_8\95021\_2.dwg



**LEGEND**



**Noise Cover**



**Alignment of SCL**

\$PLOTDRVL\$ \$MODEL\$ \$FILES\$  
 \$PRINTED BY\$ \$USER\$ \$DATE\$ \$TIME\$

REV	DESCRIPTION	BY	DATE	APPROVED	REV	DESCRIPTION	BY	DATE	APPROVED
A	FIRST ISSUE								

DRAWN	KM
DESIGNED	KM
CHECKED	EL
APPROVED	FC
DATE	27/JAN/2011

**SHATIN TO CENTRAL LINK**
  
 ORIGINATOR
   

 Ove Arup & Partners
   
 Hong Kong Limited

TITLE <b>NEX 2206 - TAW TO HUH SECTION</b> Location of Noise Cover near Mei Tin Road	
SCALE	DRAWING NO.
1 : 1000 (A3)	
REV.	

DO NOT SCALE DRAWINGS. ALL DIMENSIONS SHALL BE VERIFIED ON SITE.  
 © MTR CORPORATION LIMITED 2008. COPYRIGHT IN RESPECT OF THIS DRAWING / DOCUMENT IS OWNED BY THE MTR CORPORATION LIMITED OF HONG KONG. NO REPRODUCTION OF THE DRAWING / DOCUMENT OR ANY PART BY WHATEVER MEANS IS PERMITTED WITHOUT THE PRIOR WRITTEN CONSENT OF THE MTR CORPORATION LIMITED.