

Appendix 9.6: Summary of Trackform Insertion Loss

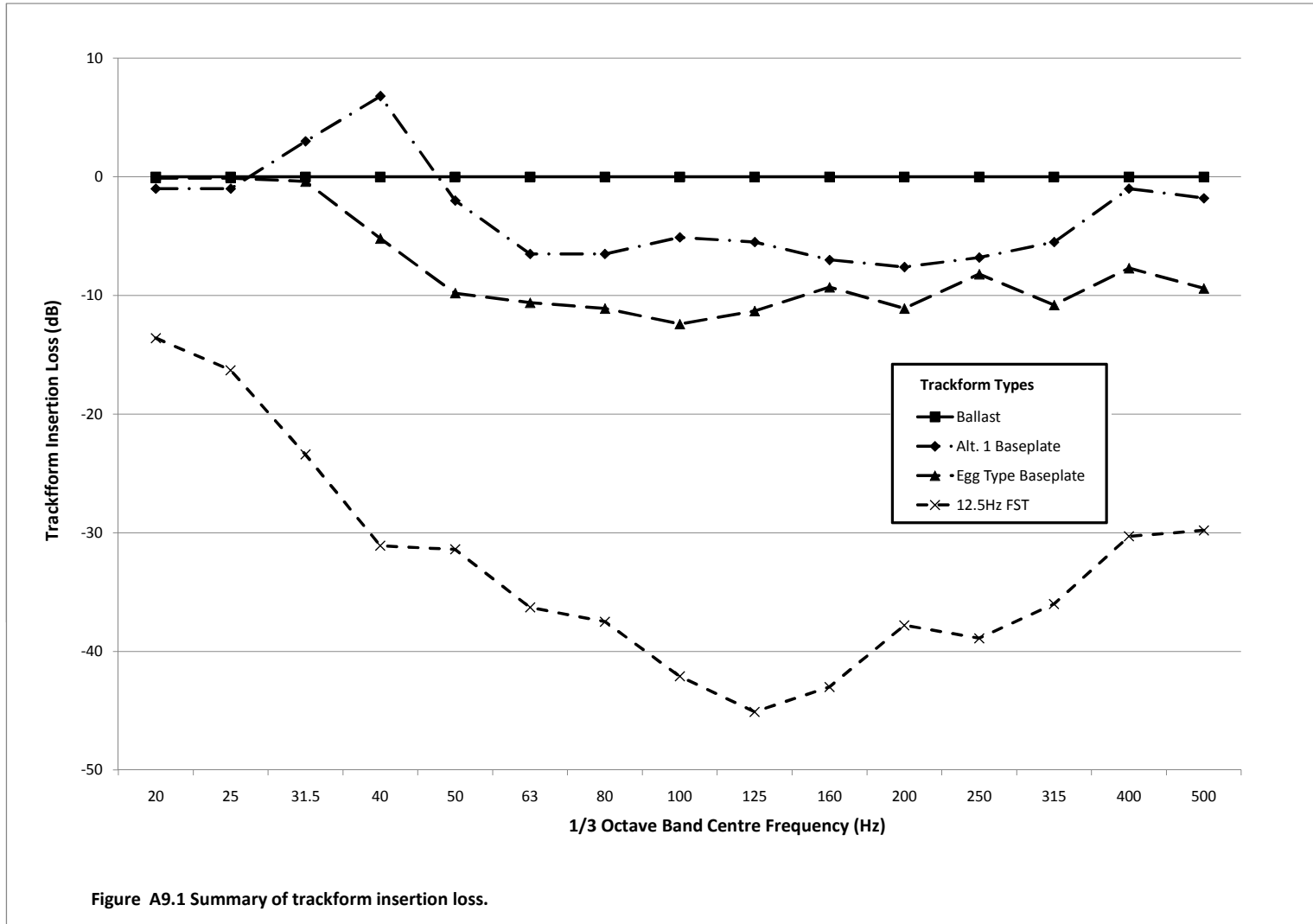


Table A9.6 Summary of Trackform Insertion Loss (TIL)

Type	Description	1/3 Octave Band Centre Frequency (Hz)														
		20	25	31.5	40	50	63	80	100	125	160	200	250	315	400	500
0	Ballast	0	0	0	0	0	0	0	0	0	0	0	0	0	0	0
1	Alt. 1 Baseplate	-1	-1	3	6.8	-2	-6.5	-6.5	-5.1	-5.5	-7	-7.6	-6.8	-5.5	-1	-1.8
2	Egg Type Baseplate	-0.1	-0.1	-0.4	-5.2	-9.8	-10.6	-11.1	-12.4	-11.3	-9.3	-11.1	-8.2	-10.8	-7.7	-9.4
3	12.5Hz FST	-13.6	-16.3	-23.4	-31.1	-31.4	-36.3	-37.5	-42.1	-45.1	-43	-37.8	-38.9	-36	-30.3	-29.8