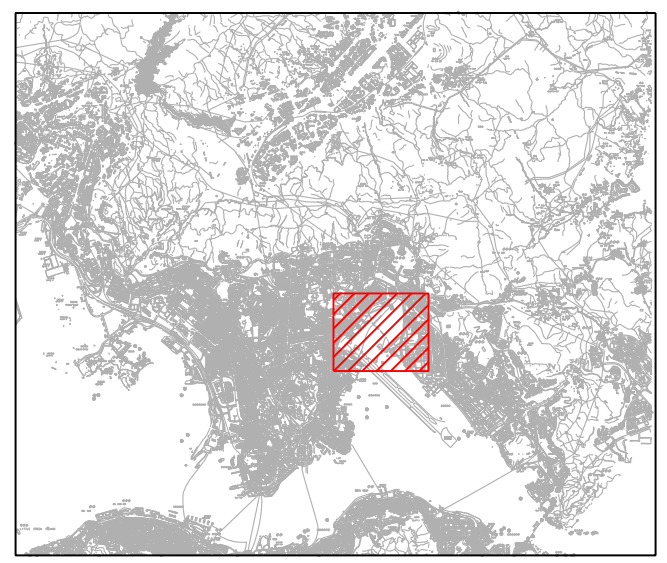
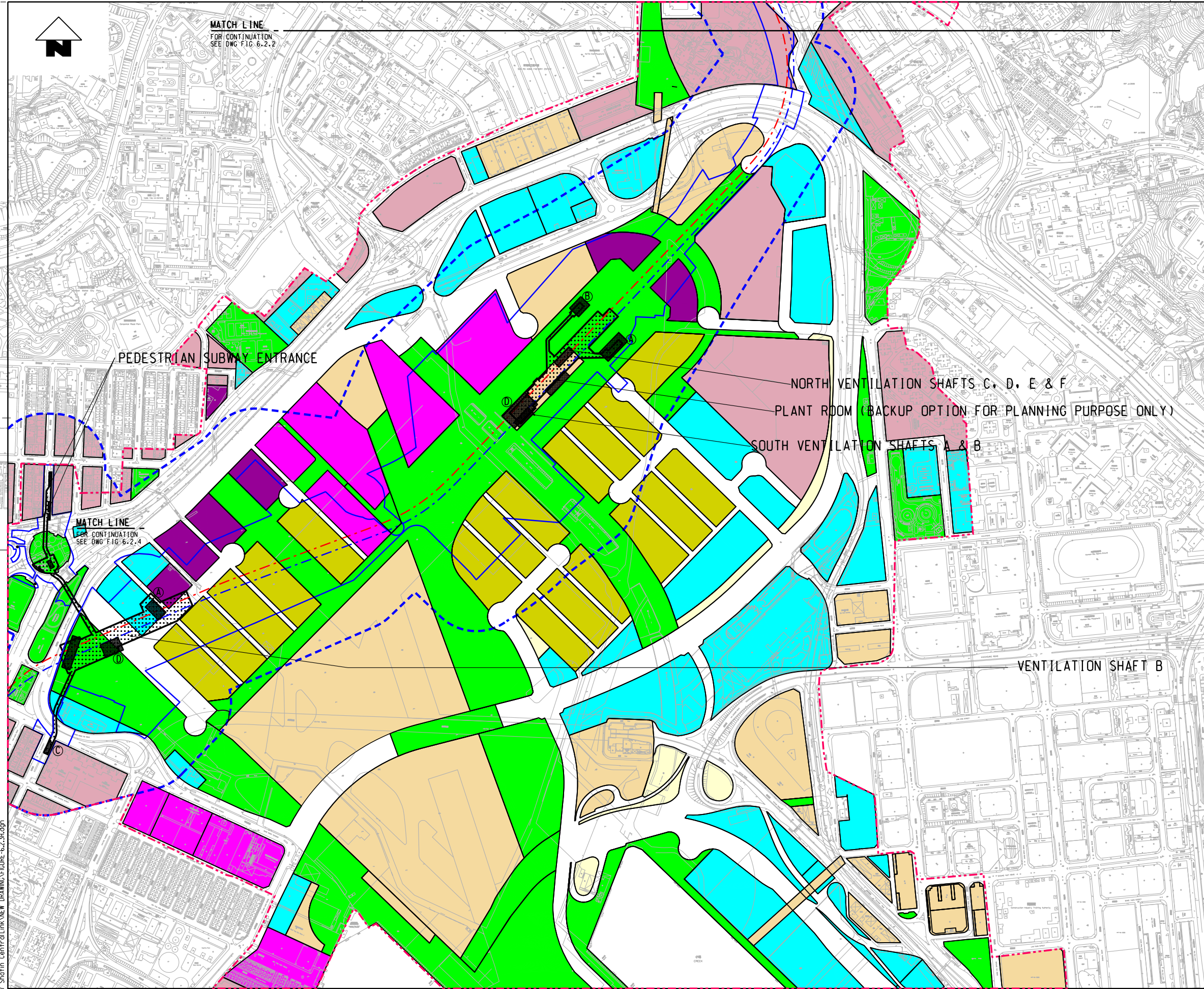




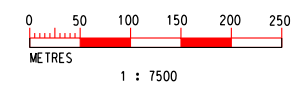
MATCH LINE  
FOR CONTINUATION  
SEE DWG FIG. 6.2.2



### KEY PLAN

#### LEGEND:

- LANDSCAPE IMPACT STUDY BOUNDARY (100M FROM WORKS)
- PRIMARY ZONE OF VISUAL INFLUENCE
- SCL ALIGNMENT
- WORKS SITE/SURFACE CONSTRUCTION ACTIVITIES
- PROPOSED STATION
- PROPOSED ABOVE GROUND STRUCTURES
- STATION ENTRANCE
- GOVERNMENT/INSTITUTION /COMMUNITY
- OPEN SPACE
- RESIDENTIAL (GROUP A)
- RESIDENTIAL (GROUP B)
- COMMERCIAL
- COMPREHENSIVE DEVELOPMENT AREA
- OTHER SPECIFIED USES
- OTHER SPECIFIED USES (AMENITY AREA)



K:\Microstation\Standard\Printer\_Driver\A3\_COLOUR.dwt  
Default Printer: tech4  
K:\HK Project\047 Shatin\_CentralLink\_NEW\_DRAWING\FIGURE-6.2.3.dgn  
%APP%48 022308  
FILENAME:

|          |          |
|----------|----------|
| DRAWN    | MK       |
| DESIGNED | ML       |
| CHECKED  | ALC      |
| APPROVED | KN       |
| DATE     | NOV 2011 |

ORIGINATOR  
**ARUP** Ove Arup & Partners  
Hong Kong Limited

**MTR**  
SHATIN TO CENTRAL LINK  
CADD REF. FIGURE-6.2.3H.dgn

|  |              |
|--|--------------|
| TITLE  |              |
| NEX 2206 - TAW TO HUH SECTION<br>LANDSCAPE AND VISUAL IMPACT ASSESSMENT<br>PLANNING & DEVELOPMENT FRAMEWORK (OZP)<br>KAI TAK STATION |              |
| SCALE  | DRAWING NO.  |
| 1 : 7500 (A3)  | FIGURE 6.2.3 |
| REV.   | H            |