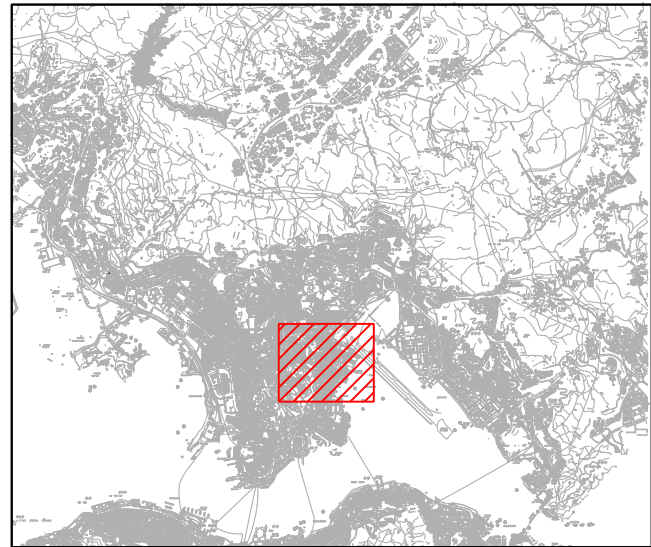
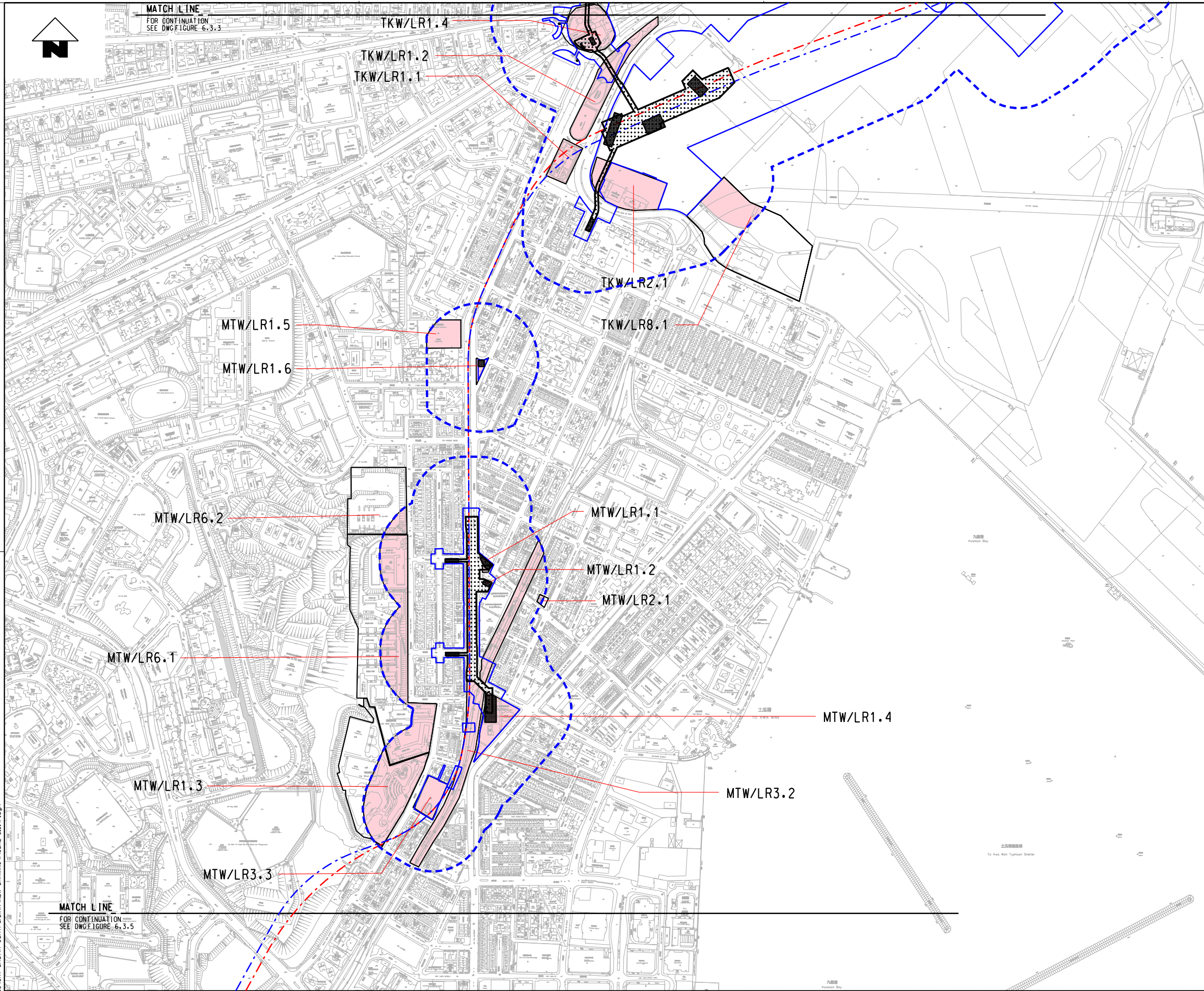


K:\Microstation Standard\Printer Driver\A3 COLOUR.plt  
Default PRINTED BY: designer3 20/3/21 3:47:44 PM  
K:\Project\HK PROJ\047 Shatin Central Link\NEW DRAWING\FIGURE 6.3.4E.dgn

PLOT DRW:  
MODELNAME:  
FILENAME:



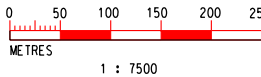
### KEY PLAN

#### LEGEND:

- LANDSCAPE IMPACT STUDY BOUNDARY (100M FROM WORKS AREA)
- PROPOSED WORKS AREA
- SCL ALIGNMENT
- PROPOSED STATION (UNDERGROUND)
- PROPOSED ABOVE GROUND STRUCTURE
- LANDSCAPE RESOURCES BOUNDARY

#### LANDSCAPE RESOURCES

- TKW/LR1.1 - Sung Wong Toi Garden
- TKW/LR1.2 - Sung Wong Toi Playground
- TKW/LR1.3 - Fu Ning Street Sitting Out Area
- TKW/LR1.4 - Olympic Garden
- TKW/LR1.5 - Ma Tau Wai Road Playground
- TKW/LR1.6 - Sitting out area at Junction of Ma Tau Wai Road and Tam Kung Road
- TKW/LR2.1 - Trees at Hong Kong Aviation Club & Far East Flying Tech. School
- TKW/LR6.1 - Trees at Chun Seen Mei Chuen
- TKW/LR8.1 - Vegetation grow at Kai Tak Open Space
- MTW/LR1.1 - Lok Shan Road Playground
- MTW/LR1.2 - To Kwa Wan Complex Playground
- MTW/LR1.4 - Ma Tau Wai Road/To Kwa Wan Road Garden
- MTW/LR2.1 - Trees in Tin Hau Temple
- MTW/LR3.2 - Vegetation along Kowloon City Road
- MTW/LR3.3 - Trees in Parking Lot at Shan Xi Street
- MTW/LR6.2 - Trees in Celestial Height



DRAWN	CC
DESIGNED	EL
CHECKED	ALC
APPROVED	KN
DATE	21/MAR/2011

DO NOT SCALE DRAWINGS. ALL DIMENSIONS SHALL BE VERIFIED ON SITE.  
© MTR CORPORATION LIMITED 2008. COPYRIGHT IN RESPECT OF THIS DRAWING / DOCUMENT IS OWNED BY THE MTR CORPORATION LIMITED OF HONG KONG. NO REPRODUCTION OF THE DRAWING / DOCUMENT OR ANY PART BY WHATEVER MEANS IS PERMITTED WITHOUT THE PRIOR WRITTEN CONSENT OF THE MTR CORPORATION LIMITED.



### SHATIN TO CENTRAL LINK

ORIGINATOR  
**ARUP** Ove Arup & Partners  
Hong Kong Limited

CADD REF. FIGURE 6.3.4E.DGN

TITLE  
**NEX 2206 - TAW TO HUH SECTION  
LANDSCAPE AND VISUAL IMPACT ASSESSMENT  
LANDSCAPE RESOURCES  
TO KWA WAN STATION, MA TAU WAI STATION  
AND TAM KUNG ROAD EEP**

SCALE  
1 : 7500 (A3)

DRAWING NO.  
FIGURE 6.3.4

REV.  
F