
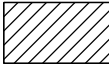
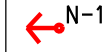


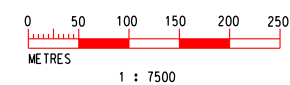
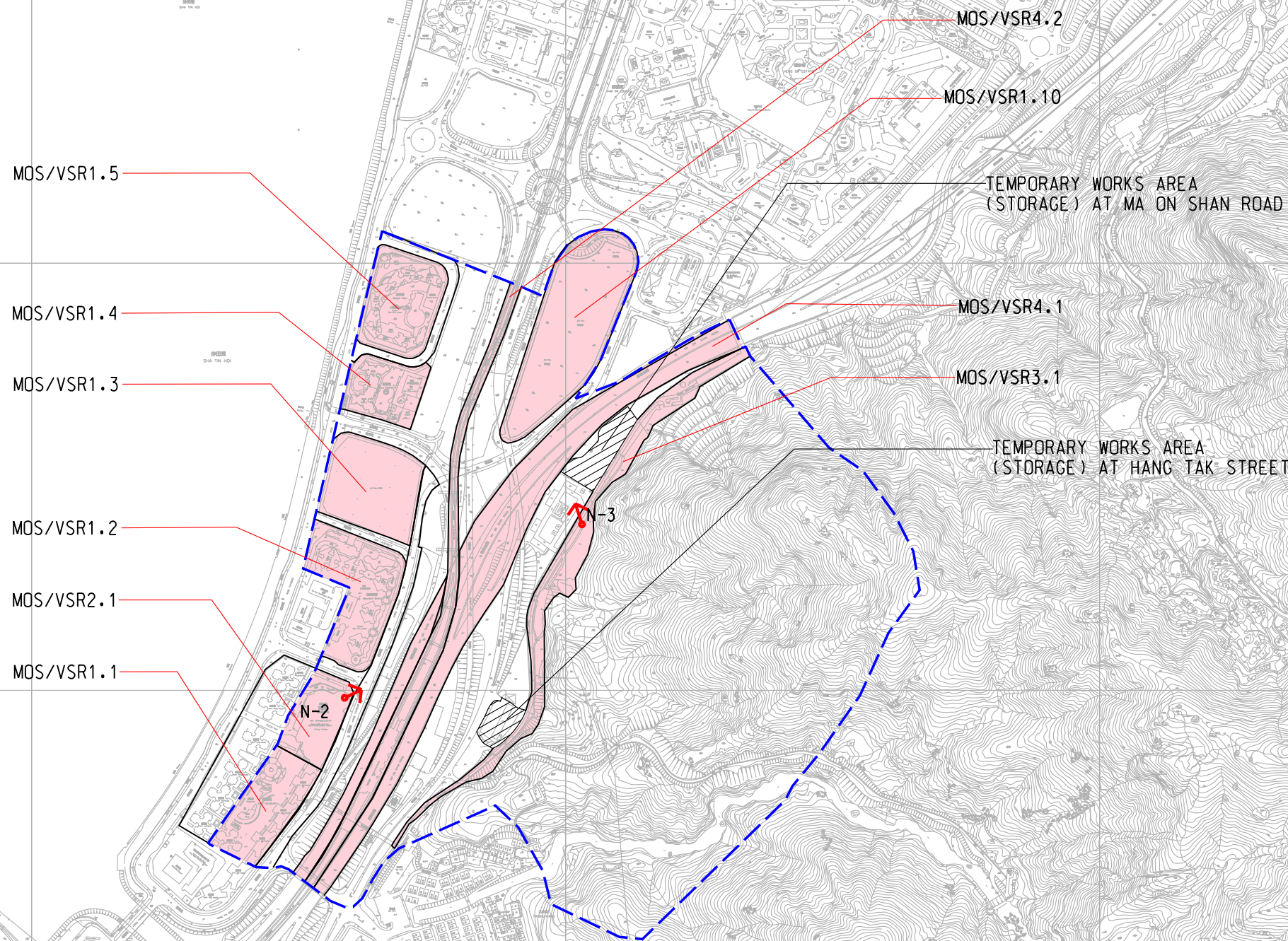
KEY PLAN

LEGEND :

-  PRIMARY ZONE OF VISUAL INFLUENCE
-  TEMPORARY WORKS AREA (STORAGE)
-  PHOTO VIEWPOINT LOCATION

VISUAL SENSITIVE RECEIVERS



- MOS/VSR 1.1 - Kam Tai Court
- MOS/VSR 1.2 - Mountain Shore
- MOS/VSR 1.3 - Sausage Roll
- MOS/VSR 1.4 - La Costa
- MOS/VSR 1.5 - Ocean View
- MOS/VSR 1.10- Future residential development along Hang Chi Street
- MOS/VSR 2.1 - Kam Tai Shopping Centre
- MOS/VSR 3.1 - Bicycle track along Ma On Shan
- MOS/VSR 4.1 - Ma On Shan Road
- MOS/VSR 4.2 - Passengers On MTR track along Ma On Shan Line



K:\Microstation Standard\Printer Driver\A3_COLOUR.dwt
 Default PRINTED BY: Tech 2011/10
 FILENAME: K:\Project\047_Shatin_CentralLink_NEW_DRAWING\FIGURE-6.6.dgn

| REV | DESCRIPTION | BY | DATE | APPROVED | REV | DESCRIPTION | BY | DATE | APPROVED |
|-----|-------------|----|------|----------|-----|-------------|----|------|----------|
| | | | | | | | | | |

| | |
|----------|----------|
| DRAWN | HW |
| DESIGNED | EL |
| CHECKED | ALC |
| APPROVED | KN |
| DATE | NOV/2011 |


SHATIN TO CENTRAL LINK
 ORIGINATOR
 **Ove Arup & Partners**
 Hong Kong Limited
 CADD REF. **FIGURE-6.6.16D.dgn**

| | | | |
|---------------|----------------------|-----------------------------------------------|--|
| TITLE | | NEX 2206 - TAW TO HUH SECTION | |
| | | LANDSCAPE AND VISUAL IMPACT ASSESSMENT | |
| | | ZONE OF VISUAL INFLUENCE | |
| | | WORKS AREA (STORAGE) AT MA ON SHAN | |
| SCALE | DRAWING NO. | REV. | |
| 1 : 7500 (A3) | FIGURE 6.6.16 | D | |