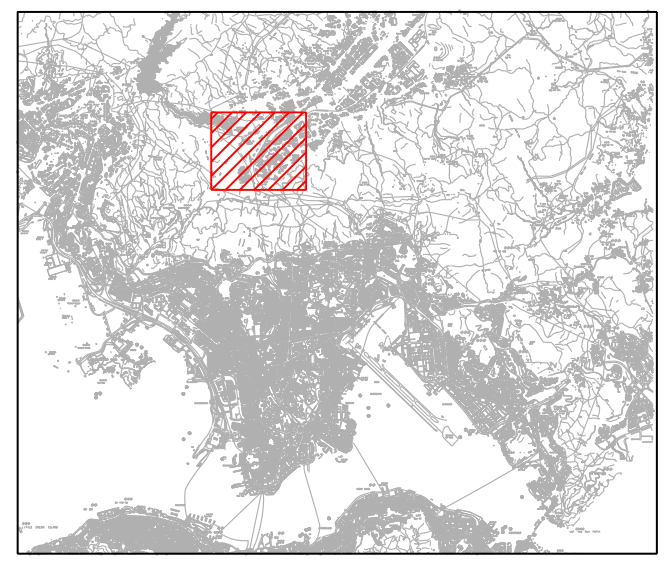
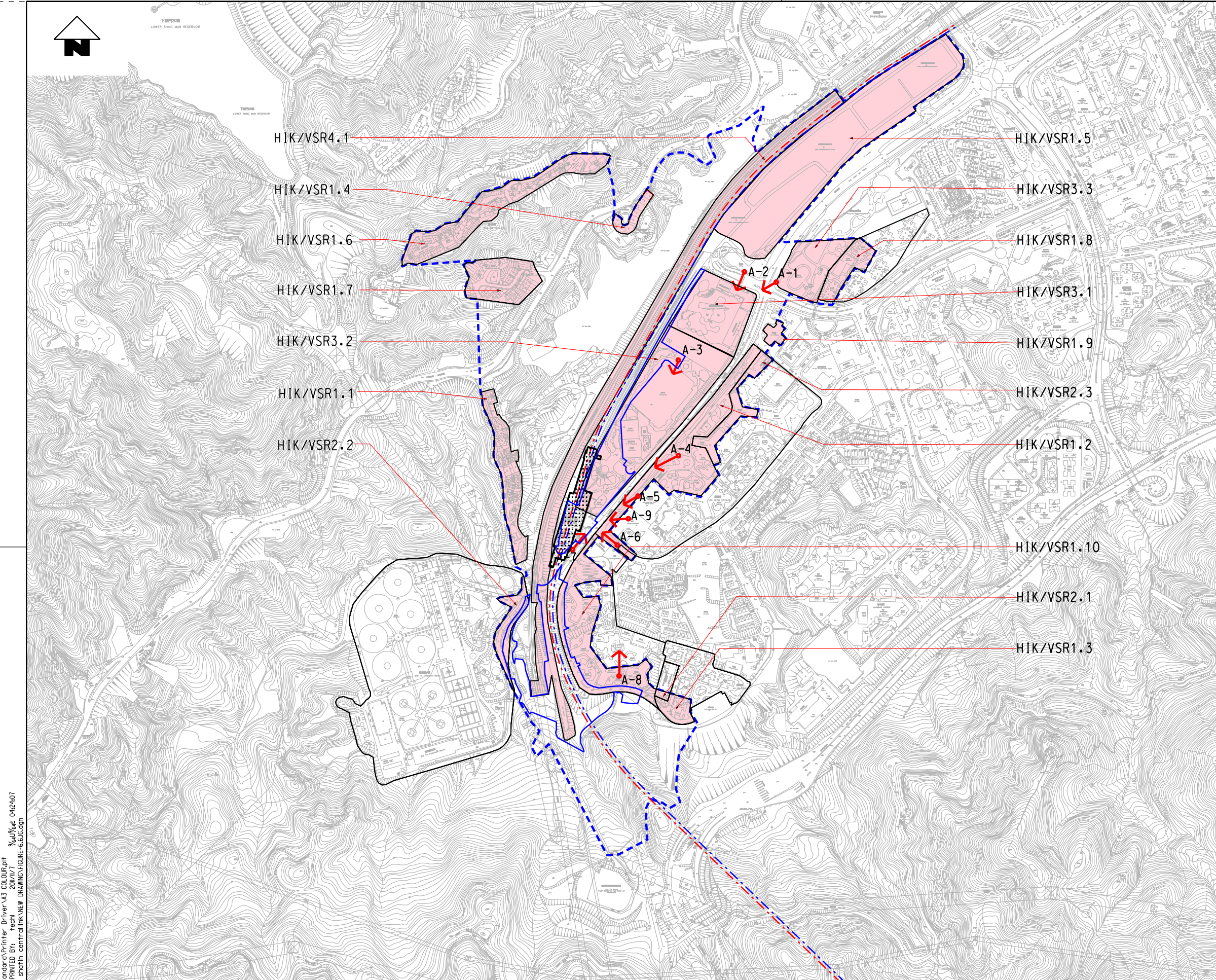





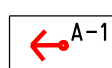


LOWER SHING WAI RESERVOIR



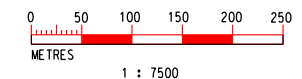
### KEY PLAN

#### LEGEND:

-  PRIMARY ZONE OF VISUAL INFLUENCE
-  PROPOSED WORKS SITE
-  SCL ALIGNMENT
-  PHOTO VIEWPOINT LOCATION

#### VISUAL SENSITIVE RECEIVER

- HIK/VSR 1.1 Residential along Keng Hau Road
- HIK/VSR 1.2 Hin Keng Estate (North)
- HIK/VSR 1.3 Ka Tin Court
- HIK/VSR 1.4 Sha Tin Height
- HIK/VSR 1.5 Festival City (Residents above Tai Wai Depot)
- HIK/VSR 1.6 Royal Forest
- HIK/VSR 1.7 Woodcrest Hill
- HIK/VSR 1.8 Carado Garden
- HIK/VSR 1.9 Hin Yiu Estate
- HIK/VSR 1.10 Hin Keng Estate (South)
- HIK/VSR 2.1 CUHKAA Thomas Cheung Primary School
- HIK/VSR 2.2 Sha Tin Water Treatment Works
- HIK/VSR 2.3 Carmel Alison Lam Primary School
- HIK/VSR 3.1 Hin Keng Outdoor Swimming Pool
- HIK/VSR 3.2 Hin Tin Playground
- HIK/VSR 3.3 Che Kung Mui Road Playground
- HIK/VSR 4.1 Passengers on MTR between Tai Wa Station and Tai Wa Portal



K:\Microstation Standard\Printer Driver\A3 COLOUR.ppt 2011/7/7 %d\%e 046407  
Default PRINTED BY: Tech central\LINK NEW DRAWING\FIGURE-6.6.dgn  
K:\HK Project\at\shatin.central\LINK NEW DRAWING\FIGURE-6.6.dgn

DRAWN	HW
DESIGNED	ML
CHECKED	ALC
APPROVED	KN
DATE	11/FEB/2011
DO NOT SCALE DRAWINGS. ALL DIMENSIONS SHALL BE VERIFIED ON SITE. (C) MTR CORPORATION LIMITED 2008. COPYRIGHT IN RESPECT OF THIS DRAWING / DOCUMENT IS OWNED BY THE MTR CORPORATION LIMITED OF HONG KONG. NO REPRODUCTION OF THE DRAWING / DOCUMENT OR ANY PART BY WHATEVER MEANS IS PERMITTED WITHOUT THE PRIOR WRITTEN CONSENT OF THE MTR CORPORATION LIMITED.	

**MTR**

SHATIN TO CENTRAL LINK

ORIGINATOR

**ARUP** Ove Arup & Partners  
Hong Kong Limited

CADD REF. FIGURE-6.6.1G.dgn

TITLE	
NEX 2206 - TAW TO HUH SECTION LANDSCAPE AND VISUAL IMPACT ASSESSMENT ZONE OF VISUAL INFLUENCE HIN KENG STATION	
SCALE	DRAWING NO.
1 : 7500 (A3)	FIGURE 6.6.1
REV.	G