

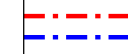






### KEY PLAN

#### LEGEND:

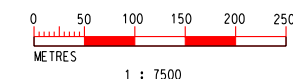
-  PRIMARY ZONE OF VISUAL INFLUENCE
-  PROPOSED WORKS SITE
-  SCL ALIGNMENT

#### IMPACT SIGNIFICANCE:

-  INSUBSTANTIAL
-  SLIGHT
-  MODERATE
-  SUBSTANTIAL

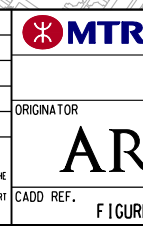
#### VISUAL SENSITIVE RECEIVERS

- MCH/VSR 1.1 PANG CHING COURT
- MCH/VSR 1.2 TSUI CHUK GARDEN
- MCH/VSR 1.3 WANG KING HOUSE/WANG YUEN HOUSE (TIN WANG COURT)
- MCH/VSR 1.4 FU YUEN HOUSE / KWAI YUEN HOUSE / WING YUEN HOUSE (CHUK YUEN SOUTH ESTATE)
- MCH/VSR 1.5 CHUNG HONG HOUSE / CHUNG ON HOUSE / (TIN MA COURT)
- MCH/VSR 1.6 NEW BUILDING BLOCK (WING SIN HOUSE) AT PHASE 3 OF UPPER WONG TAI SIN ESTATE.
- MCH/VSR 1.7 CHUK YUEN SOUTH ESTATE
- MCH/VSR 1.8 CHUK YUEN HOUSE (CHUK YUEN SOUTH ESTATE)
- MCH/VSR 1.9 FUNG WONG SAN TSUEN
- MCH/VSR 1.10 HSIN KUANG CENTRE & TROPICANA GARDENS
- MCH/VSR 1.11 UPPER WONG TAI SIN ESTATE
- MCH/VSR 1.12 CHUK YUEN UNITED VILLAGE
- MCH/VSR 1.13 WONG TAI SIN RANK & FILE MARRIED QUARTER
- MCH/VSR 2.1 PRINCE MEMORIAL CATHOLIC PRIMARY SCHOOL
- MCH/VSR 2.2 BAPTIST RAINBOW PRIMARY SCHOOL
- MCH/VSR 2.3 LUNG CHEUNG GOVERNMENT SECONDARY SCHOOL
- MCH/VSR 2.4 OUR LADY'S KINDERGARTEN
- MCH/VSR 3.1 WONG TAI SIN ROAD PLAYGROUND
- MCH/VSR 3.3 SIK SIK YUEN'S WONG TAI SIN TEMPLE
- MCH/VSR 3.4 FUTURE RE-PROVIDED MA CHAI HANG ROAD PLAYGROUND
- MCH/VSR 4.1 PEDESTRIANS AND PASSENGERS ON CHUK YUEN ROAD AND MA CHAI HANG ROAD
- MCH/VSR 4.2 PEDESTRIAN FOOTBRIDGE ACROSS CHUK YUEN ROAD
- MCH/VSR 4.3 PEDESTRIAN STAIRCASE CONNECTION BETWEEN TSUI CHUK GARDEN AND CHUK YUEN ROAD
- MCH/VSR 4.4 WONG TAI SIN ROAD (WEST)
- MCH/VSR 4.5 WONG TAI SIN ROAD (EAST)
- MCH/VSR 4.6 FUNG TAK ROAD & SHA TIN PASS ROAD
- MCH/VSR 4.7 PEDESTRIAN ON THE PATHWAY BETWEEN CHUK YUEN SOUTH ESTATE & WONG TAI SIN ROAD (WEST)
- MCH/VSR 4.8 PEDESTRIAN FOOTBRIDGE ACROSS WONG TAI SIN ROAD (EAST)



K:\Microstation\Standard\Printer\_Driver\A3\_COLOUR.dwt  
 MODELNAME: 2011/28  
 PRINTED BY: designer3  
 FILENAME: K:\Project\HK PROJ\047 Shatin Central Link\NEW DRAWING\FIGURE-6.8.31.dgn

DRAWN	CC
DESIGNED	EL
CHECKED	ALC
APPROVED	KN
DATE	14/JAN/2011



### SHATIN TO CENTRAL LINK

ORIGINATOR  
**ARUP** Ove Arup & Partners  
Hong Kong Limited

CADD REF. FIGURE 6.8.31E.DGN

TITLE	
NEX 2206 - TAW TO HUH SECTION LANDSCAPE AND VISUAL IMPACT ASSESSMENT RESIDUAL VISUAL IMPACT IN CONSTRUCTION PHASE MA CHAI HANG VENT BUILDING AND EA/EEA AT WONG TAI SIN	
SCALE	DRAWING NO.
1 : 7500 (A3)	FIGURE 6.8.31
REV.	G