

LEGEND:

- PRIMARY ZONE OF VISUAL INFLUENCE
- PROPOSED WORKS SITE
- SCL ALIGNMENT

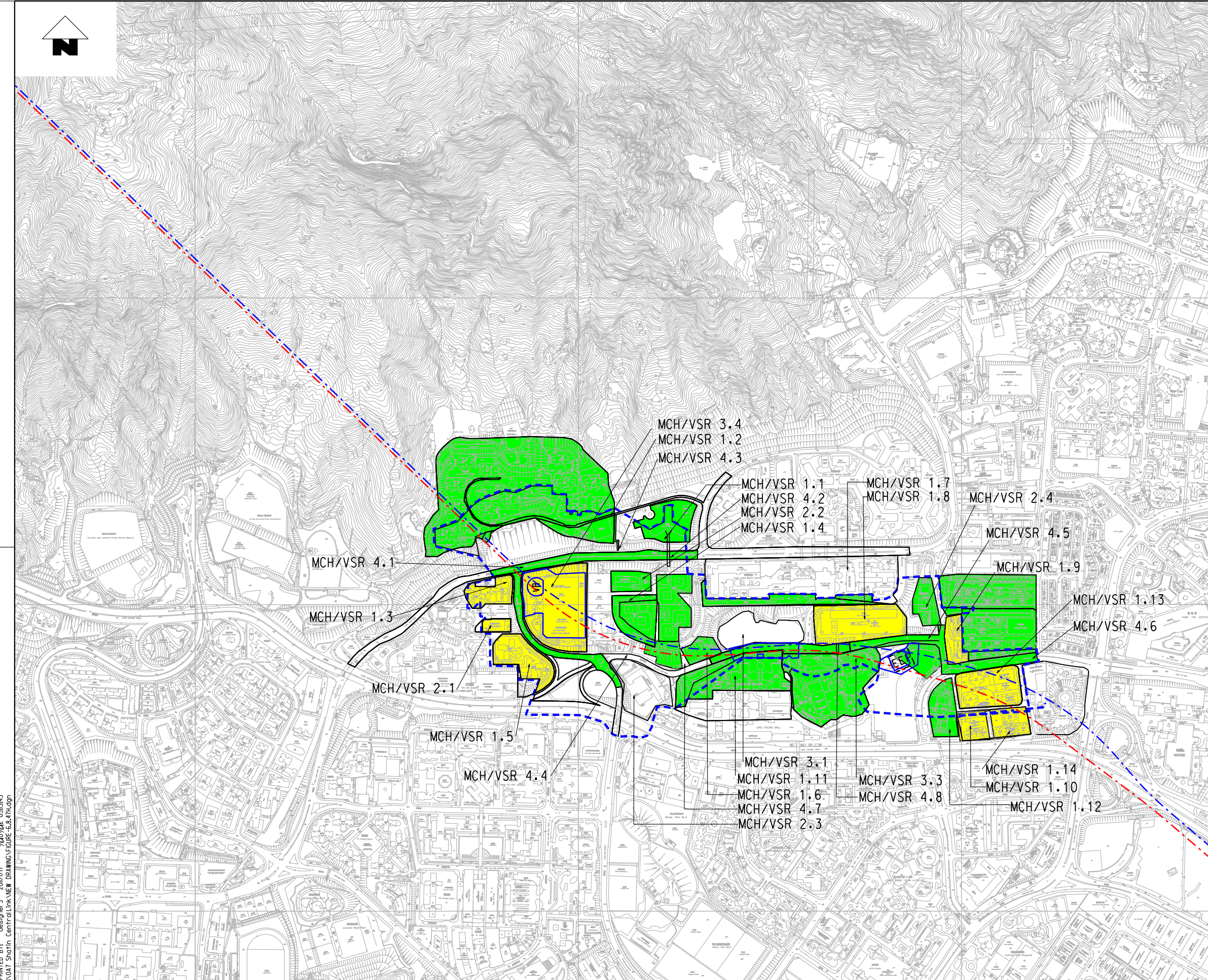
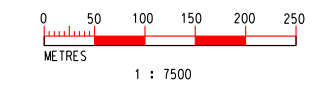
KEY PLAN

IMPACT SIGNIFICANCE:

- INSUBSTANTIAL
- SLIGHT

VISUAL SENSITIVE RECEIVERS

| | |
|--------------|--|
| MCH/VSR 1.1 | PANG CHING COURT |
| MCH/VSR 1.2 | TSUI CHUK GARDEN |
| MCH/VSR 1.3 | WANG KING HOUSE / WANG YUEN HOUSE (TIN WANG COURT) |
| MCH/VSR 1.4 | FU YUEN HOUSE / KWAI YUEN HOUSE / WING YUEN HOUSE (CHUK YUEN SOUTH ESTATE) |
| MCH/VSR 1.5 | CHUNG HONG HOUSE / CHUNG ON HOUSE / (TIN MA COURT) |
| MCH/VSR 1.6 | NEW BUILDING BLOCK (WING SIN HOUSE) AT PHASE 3 OF UPPER WONG TAI SIN ESTATE. |
| MCH/VSR 1.7 | CHUK YUEN SOUTH ESTATE |
| MCH/VSR 1.8 | CHUK YUEN HOUSE (CHUK YUEN SOUTH ESTATE) |
| MCH/VSR 1.9 | FUNG WONG SAN TSUEN |
| MCH/VSR 1.10 | HSIN KUANG CENTRE |
| MCH/VSR 1.11 | UPPER WONG TAI SIN ESTATE |
| MCH/VSR 1.12 | CHUK YUEN UNITED VILLAGE |
| MCH/VSR 1.13 | WONG TAI SIN RANK & FILE MARRIED QUARTER |
| MCH/VSR 1.14 | TROPICANA GARDENS |
| MCH/VSR 2.1 | PRINCE MEMORIAL CATHOLIC PRIMARY SCHOOL |
| MCH/VSR 2.2 | BAPTIST RAINBOW PRIMARY SCHOOL |
| MCH/VSR 2.3 | LUNG CHEUNG GOVERNMENT SECONDARY SCHOOL |
| MCH/VSR 2.4 | OUR LADY'S KINDERGARTEN |
| MCH/VSR 3.1 | WONG TAI SIN ROAD PLAYGROUND |
| MCH/VSR 3.3 | SIX SIK YUEN'S WONG TAI SIN TEMPLE |
| MCH/VSR 3.4 | FUTURE RE-PROVIDED MA CHAI HANG ROAD PLAYGROUND |
| MCH/VSR 4.1 | PEDESTRIANS AND PASSENGERS ON CHUK YUEN ROAD AND MA CHAI HANG ROAD |
| MCH/VSR 4.2 | PEDESTRIAN ON THE FOOTBRIDGE ACROSS CHUK YUEN ROAD |
| MCH/VSR 4.3 | PEDESTRIANS ON THE STAIRCASE CONNECTION BETWEEN TSUI CHUK GARDEN AND CHUK YUEN ROAD |
| MCH/VSR 4.4 | PEDESTRIANS AT WONG TAI SIN ROAD (WEST) |
| MCH/VSR 4.5 | PEDESTRIANS AT WONG TAI SIN ROAD (EAST) |
| MCH/VSR 4.6 | PEDESTRIANS AT FUNG TAK ROAD & SHA TIN PASS ROAD |
| MCH/VSR 4.7 | PEDESTRIANS ON THE PATHWAY BETWEEN CHUK YUEN SOUTH ESTATE & WONG TAI SIN ROAD (WEST) |
| MCH/VSR 4.8 | PEDESTRIANS FOOTBRIDGE ACROSS WONG TAI SIN ROAD (EAST) |



K:\Microstation\Standard\Printer: Driver\A3 COLOUR.dwt
 MODELNAME: 2011/1/7
 FILENAME: K:\Project\HK PROJ\047 Shotin Central Link\NEW DRAWING\FIGURE-6.8.47H.dgn

| REV | DESCRIPTION | BY | DATE | APPROVED | REV | DESCRIPTION | BY | DATE | APPROVED |
|-----|-------------|----|------|----------|-----|-------------|----|------|----------|
| | | | | | | | | | |
| | | | | | | | | | |
| | | | | | | | | | |
| | | | | | | | | | |

| | |
|----------|-------------|
| DRAWN | CC |
| DESIGNED | EL |
| CHECKED | ALC |
| APPROVED | KN |
| DATE | 14/JAN/2011 |

MTR

SHATIN TO CENTRAL LINK

ORIGINATOR

ARUP Ove Arup & Partners
Hong Kong Limited

CADD REF. **FIGURE 6.8.47.DGN**

TITLE

**NEX 2206 - TAW TO HUH SECTION
LANDSCAPE AND VISUAL IMPACT ASSESSMENT
MA CHAI HANG VENT BUILDING
RESIDUAL VISUAL IMPACT IN OPERATION PHASE
MA CHAI HANG VENT BUILDING AND EA/EEA AT WONG TAI SIN**

SCALE: 1 : 7500 (A3) DRAWING NO. **FIGURE 6.8.47** REV. **H**