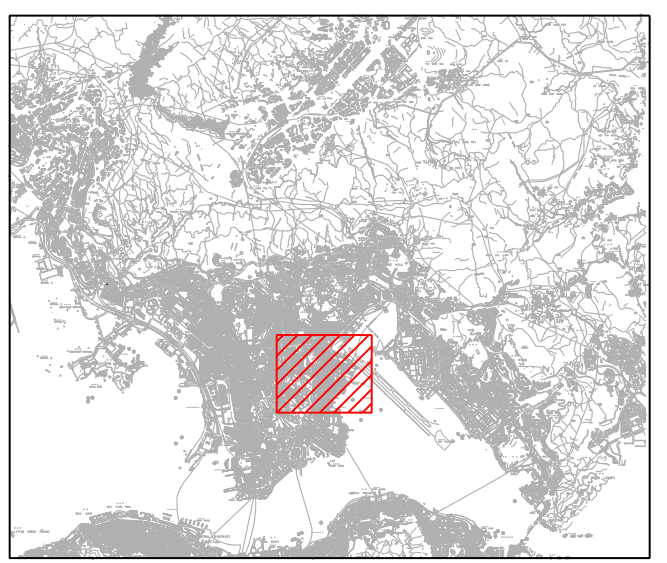
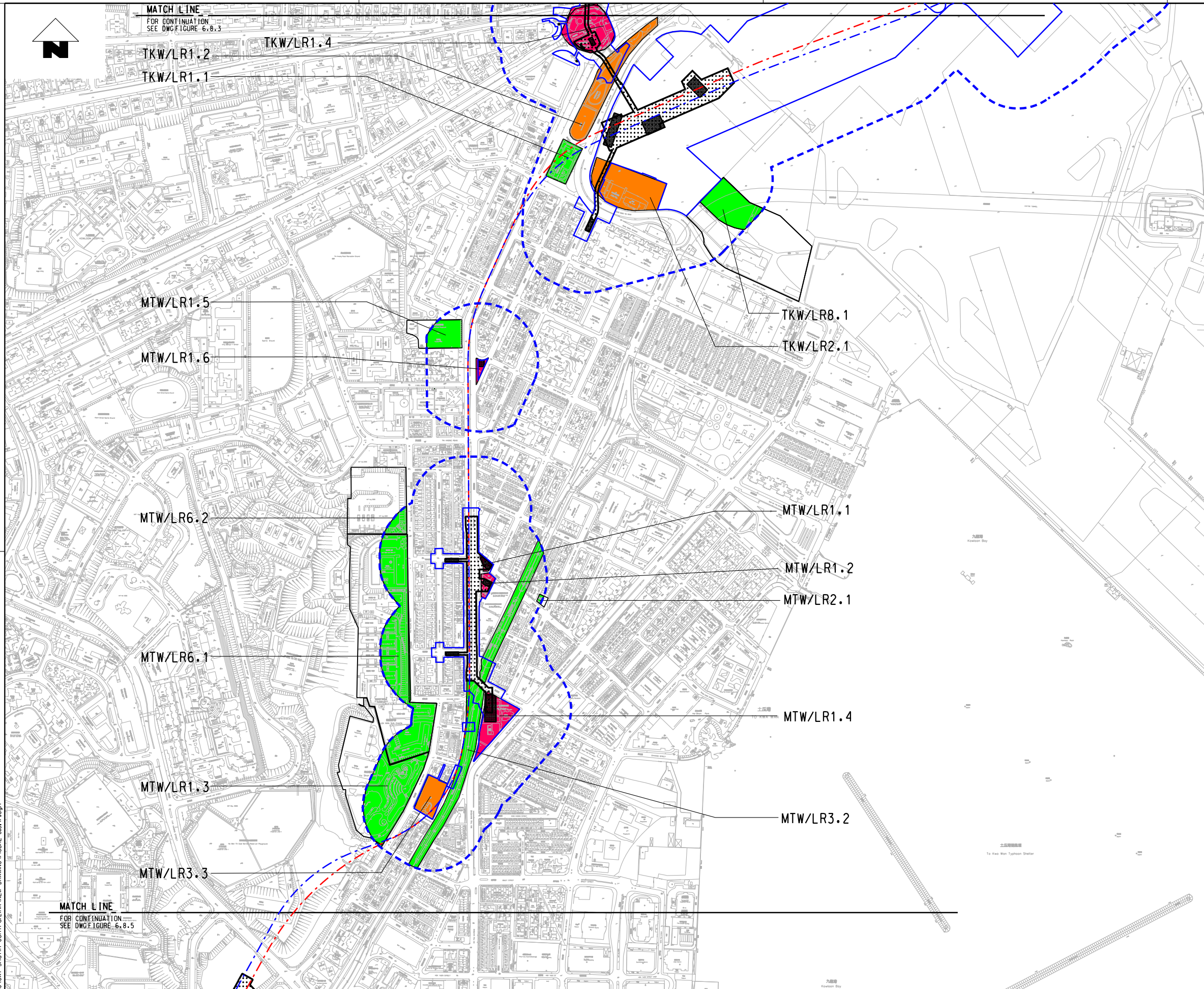


PLOT DRW: K:\Microstation Standard\Printer Driver\A3 COLOUR.plt  
 MODELNAME: 20/3/21 9:40/64 12:40:07  
 FILENAME: K:\Project\HK PROJ\DAT 7 Shatin CentralLink\NEW DRAWING\FIGURE-6.8.4F.dgn



**KEY PLAN**

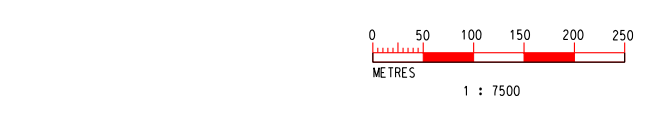
**LEGEND:**

- Landscape Impact Study Boundary (100m from Works Area)
- Proposed Works Site
- - - SCL Alignment
- Grid Pattern Proposed Station (Underground)
- Solid Black Proposed Above Ground Structure

**IMPACT SIGNIFICANCE:**

- Green Insubstantial
- Yellow Slight
- Orange Moderate
- Pink Substantial

- LANDSCAPE RESOURCES**
- TKW/LR1.1 - Sung Wong Toi Garden
  - TKW/LR1.2 - Sung Wong Toi Playground
  - TKW/LR1.3 - Fu Ning Street Sitting Out Area
  - TKW/LR1.4 - Olympic Garden
  - TKW/LR2.1 - Trees at Hong Kong Aviation Club & Far East Flying Tech. School
  - TKW/LR6.1 - Trees at Chun Seen Mei Chuen
  - TKW/LR8.1 - Vegetation grow at Kai Tak Open Space
  - MTW/LR1.1 - Lok Shan Road Playground
  - MTW/LR1.2 - To Kwa Wan Complex Playground
  - MTW/LR1.4 - Ma Tau Wai Road/To Kwa Wan Road Garden
  - MTW/LR1.5 - Ma Tau Wai Road Playground
  - MTW/LR1.6 - Tam Kung Road EEP
  - MTW/LR2.1 - Trees in Tin Hau Temple
  - MTW/LR3.2 - Vegetation along Kowloon City Road
  - MTW/LR3.3 - Trees in Parking Lot at Shansi Street
  - MTW/LR6.2 - Trees in Celestial Height



REV	DESCRIPTION	BY	DATE	APPROVED	REV	DESCRIPTION	BY	DATE	APPROVED

DRAWN	YN
DESIGNED	EL
CHECKED	ALC
APPROVED	KN
DATE	25/MAR/2011

**MTR**

SHATIN TO CENTRAL LINK

ORIGINATOR

**ARUP** Ove Arup & Partners  
Hong Kong Limited

CADD REF. FIGURE 6.8.4F.DGN

TITLE

NEX 2206 - TAW TO HUH SECTION  
 LANDSCAPE AND VISUAL IMPACT ASSESSMENT  
 RESIDUAL LANDSCAPE RESOURCE IMPACT IN CONSTRUCTION PHASE  
 AT KWA WAN STATION, MA TAU WAI STATION  
 AND TAM KUNG ROAD EEP

SCALE 1 : 7500 (A3)

DRAWING NO. FIGURE 6.8.4

REV. F