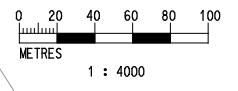


**LEGEND :**

- SOUTHBOUND ROAD OF PROPOSED ALIGNMENT
- NORTHBOUND ROAD OF PROPOSED ALIGNMENT
- PROPOSED STATION
- DIAMOND HILL STABLING SIDINGS
- TEMPORARY AT GRADE WORKS SITES
- PROPOSED DUST MONITORING STATIONS



C:\Program Files\Bentley\Workspace\workspace\p0707\p0707\p0707.dgn  
 PLOT DRW: C:\Program Files\Bentley\Workspace\workspace\p0707\p0707\p0707.dgn  
 MODELNAME: NEX2206\_C\_SCL\_OAP\_ENV\_007B  
 FILENAME: NEX2206\_C\_SCL\_OAP\_ENV\_007B

REV	DESCRIPTION	BY	DATE	APPROVED
B	ISSUE FOR CONSTRUCTION	GL	11/11	FC
A	FIRST ISSUE	LK	10/09	FC

DRAWN	GL
DESIGNED	LK
CHECKED	LK
APPROVED	FC
DATE	NOV/2011

**SHATIN TO CENTRAL LINK**  
 ORIGINATOR  
  
 Ove Arup & Partners  
 Hong Kong Limited  
 CADD REF. NEX2206\_C\_SCL\_OAP\_ENV\_007B

TITLE		NEX 2206 - TAW TO HUH SECTION	
		Locations of Proposed Dust Monitoring Stations (Sheet 5 of 7)	
SCALE	DRAWING NO.		REV.
1 : 4000 (A3)	Figure 7.1.5		B