

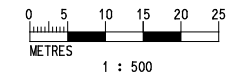
**KEY PLAN**  
SCALE 1:5000

- NOTES**
1. ALL DIMENSIONS ARE IN MILLIMETER UNLESS OTHERWISE STATED.
  2. COORDINATES ARE BASED ON THE HONG KONG METRIC GRID (1980).
  3. LEVELS REFER TO PRINCIPAL DATUM (P.D.) UNLESS SHOWN OTHERWISE.
  4. ALL LEVELS SHOWN ON DRAWINGS ARE SUBJECT TO CONFIRMATION ON SITE.
  5. PROPOSED BARRIERS UNDER SCL (TAW - HUH) ARE NOT REQUIRED IF EXISTING RETAINING WALL ACHIEVES THE HEIGHT OF THE PROPOSED BARRIERS.

- LEGEND**
- EXISTING TRACK ALIGNMENT
  - - - PROPOSED TRACK ALIGNMENT
  - PROPOSED GAZETTE BOUNDARY FOR RAILWAY DEVELOPMENT
  - - - PROPOSED HIK STATION
  - MOL RW7 — EXISTING RETAINING WALL MOL RW7
  - MOL RW5 — EXISTING RETAINING WALL MOL RW5
  - MOL RW2D — EXISTING RETAINING WALL MOL RW2D
  - MOL RW3A — EXISTING RETAINING WALL MOL RW3A
  - P1 — 2M HIGH NOISE BARRIER FROM UP TRACK LEVEL OF SCL (TAW-HUH)
  - P2 — 2M HIGH NOISE BARRIER FROM DOWN TRACK LEVEL OF SCL (TAW - HUH)
  - P3 — 3M HIGH NOISE BARRIER FROM DOWN TRACK LEVEL OF SCL (TAW - HUH)
  - P4 — 7M HIGH NOISE BARRIER FROM TAIL TRACK T2 OF TAW
  - P5 — 3M HIGH NOISE BARRIER FROM UP TRACK LEVEL OF SCL (TAW - HUH)

**PLAN**  
SCALE 1 : 500

**PLAN**  
SCALE 1 : 500



C:\Program Files\Bentley\Workspace\workspace\plotdrv\printrtr.plt  
 PLOT DRW: HONGKONG\PROJECT\254545\Drawings\For EM&A Manual\Fig 8.1a-201117.dgn  
 MODEL\$ FILENAME: C:\Program Files\Bentley\Workspace\workspace\plotdrv\printrtr.plt  
 PRINTED BY: HONGKONG\PROJECT\254545\Drawings\For EM&A Manual\Fig 8.1a-201117.dgn  
 FILENAME: C:\Program Files\Bentley\Workspace\workspace\plotdrv\printrtr.plt

REV	DESCRIPTION	BY	DATE	APPROVED	REV	DESCRIPTION	BY	DATE	APPROVED
A	FIRST ISSUE	GL	11/11	FC					

DRAWN	GL
DESIGNED	GL
CHECKED	LK
APPROVED	FC
DATE	11/11

DO NOT SCALE DRAWINGS. ALL DIMENSIONS SHALL BE CHECKED ON SITE.  
 © MTR CORPORATION LIMITED 2008. COPYRIGHT IN RESPECT OF THIS DRAWING / DOCUMENT IS OWNED BY THE MTR CORPORATION LIMITED OF HONG KONG. NO REPRODUCTION OF THE DRAWING / DOCUMENT OR ANY PART BY WHATEVER MEANS IS PERMITTED WITHOUT THE PRIOR WRITTEN CONSENT OF THE MTR CORPORATION LIMITED.

**MTR**

SHATIN TO CENTRAL LINK

ORIGINATOR

**ARUP** Ove Arup & Partners  
Hong Kong Limited

CADD REF. \$FILEA\$

TITLE

**CONTRACT 1102**  
**HIN KENG STATION**  
**GENERAL ARRANGEMENT**  
**PROPOSED NOISE BARRIERS AND ASSOCIATED RETAINING WALLS**  
**(SHEET 1 OF 2)**

SCALE 1 : 500

DRAWING NO. Figure 8.1.1a

REV. A