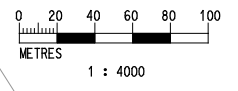


LEGEND :

- SOUTHBOUND ROAD OF PROPOSED ALIGNMENT
- NORTHBOUND ROAD OF PROPOSED ALIGNMENT
- PROPOSED STATION
- DIAMOND HILL STABLING SIDINGS
- TEMPORARY AT GRADE WORKS SITES
- CONSTRUCTION AIRBORNE NOISE MONITORING STATIONS



C:\Program Files\Bentley\Workspace\workspace\pilot\drv\p1rtr\p1rtr.pht
 MODEL\$ 1/17/2011 11:07:20 AM SHEET AM
 PLOT DRW: C:\env\project\254545\drawings\for EMEA Manual\Nov_2011\Chapter 8 - Construction Airborne Noise\Figure 8.2.5_201107.dgn
 FILENAME:

REV	DESCRIPTION	BY	DATE	APPROVED	REV	DESCRIPTION	BY	DATE	APPROVED
B	ISSUED FOR CONSTRUCTION	GL	11/11	FC					
A	FIRST ISSUE	LK	10/09	FC					

DRAWN	GL
DESIGNED	LK
CHECKED	LK
APPROVED	FC
DATE	NOV/2011

SHATIN TO CENTRAL LINK
 ORIGINATOR
ARUP Ove Arup & Partners
 Hong Kong Limited
 CADD REF. NEX2206_C_SCL_OAP_ENV_007B

TITLE
NEX 2206 - TAW TO HUH SECTION
 Locations of Noise Monitoring Stations
 (Construction Airborne Noise)
 (Sheet 5 of 6)

SCALE 1 : 4000 (A3) DRAWING NO. Figure 8.2.5 REV. B