

LEGEND:

- 300m NOISE STUDY BOUNDARY
- NOISE SENSITIVE RECEIVER
- LIMIT OF WORKS AREA FOR TKO-LT
- NOISE ENCLOSURE
- SEMI-ENCLOSURE
- FULL-ENCLOSURE
- 5m HIGH VERTICAL NOISE BARRIERS
- 4m HIGH VERTICAL NOISE BARRIERS
- 6m + 4.2m AT 45° CANTILEVER NOISE BARRIER
- 6m + 3.5m AT 90° CANTILEVER NOISE BARRIER



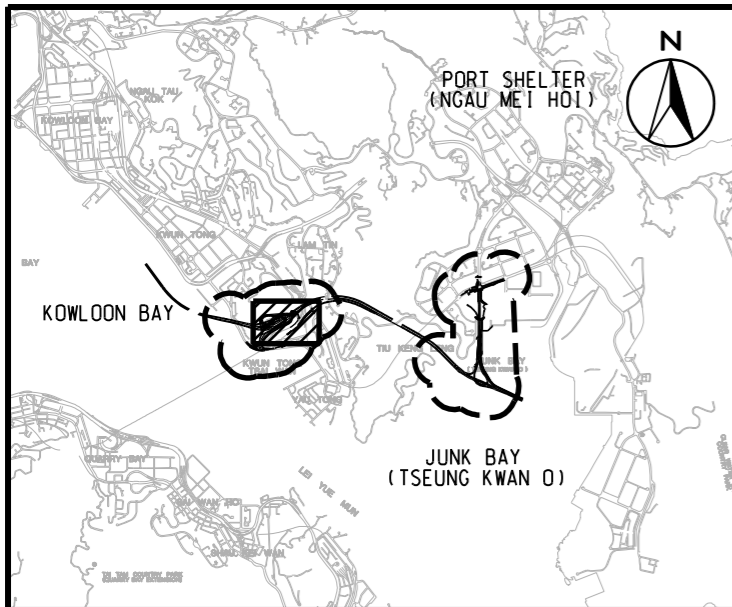
AGREEMENT NO. CE 42/2008 (CE)
TSEUNG KWAN O - LAM TIN TUNNEL AND ASSOCIATED WORKS - INVESTIGATION

LOCATION OF PROPOSED NOISE MITIGATION MEASURES (FOR EXISTING NSRS)

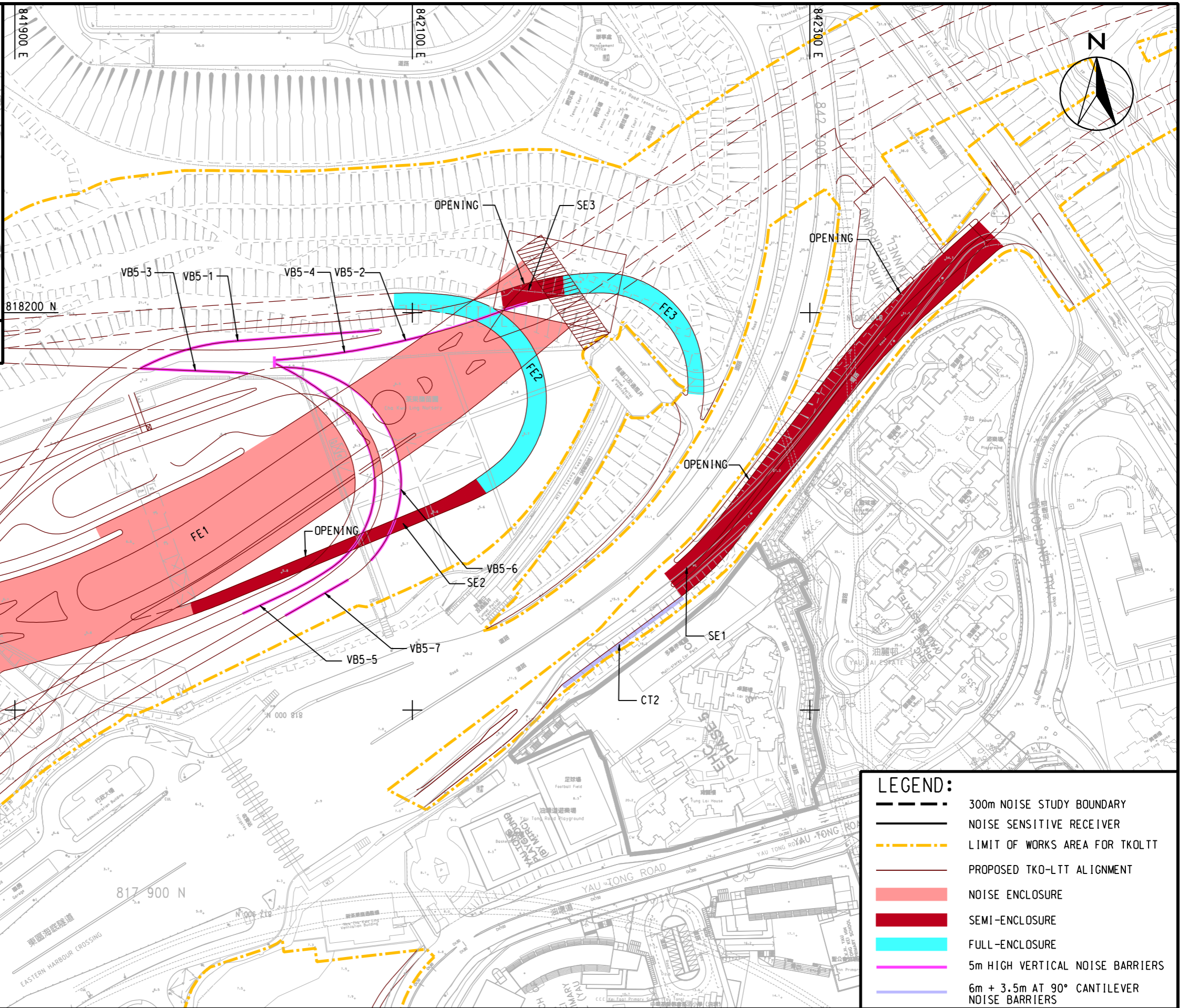
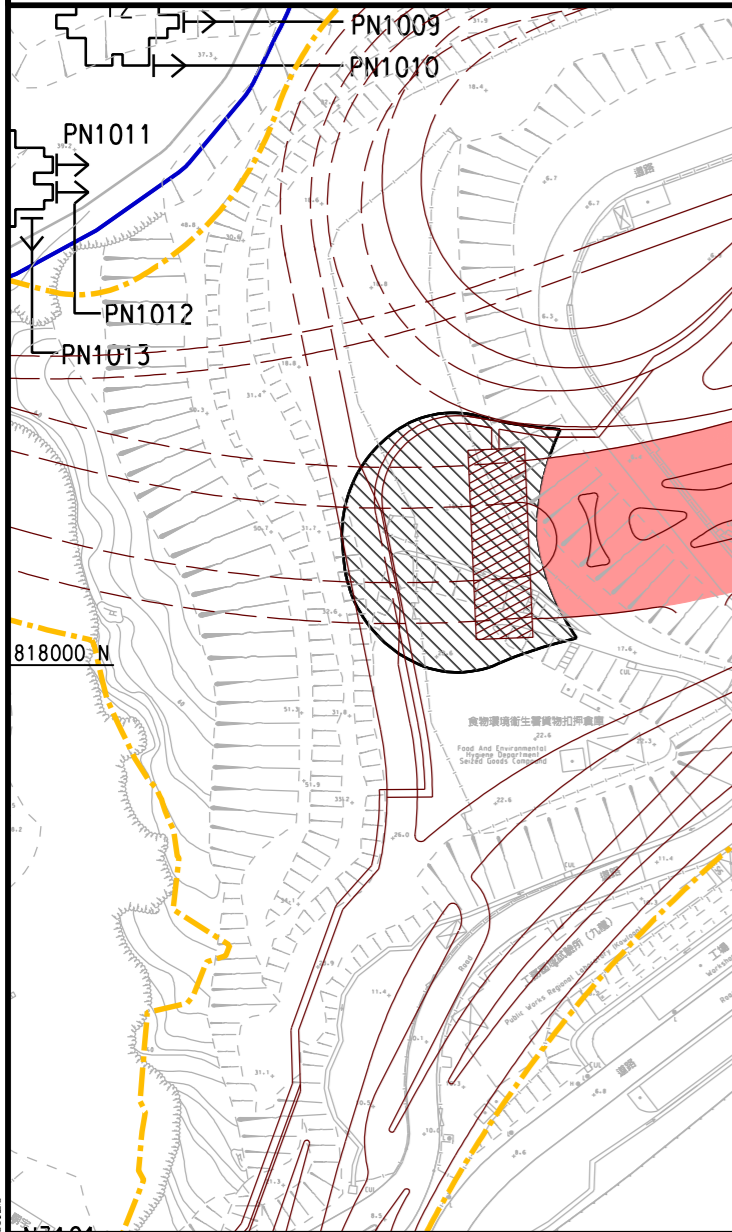
SHEET 1 OF 4

SCALE	A3 1 : 2000	DATE	JAN. 2013
CHECK	--	DRAWN	HLL
JOB No.	60097677	DRAWING No.	FIGURE 3.3
		REV	--

Plot File by: 1/29/2013 QTCAM



LOCATION PLAN
SCALE 1 : 90000



LEGEND:			
	300m NOISE STUDY BOUNDARY		NOISE SENSITIVE RECEIVER
	LIMIT OF WORKS AREA FOR TKO-LTT		PROPOSED TKO-LTT ALIGNMENT
	NOISE ENCLOSURE		SEMI-ENCLOSURE
	FULL-ENCLOSURE		5m HIGH VERTICAL NOISE BARRIERS
	6m + 3.5m AT 90° CANTILEVER NOISE BARRIERS		

Plot File by: 1/29/2013 QTCAM

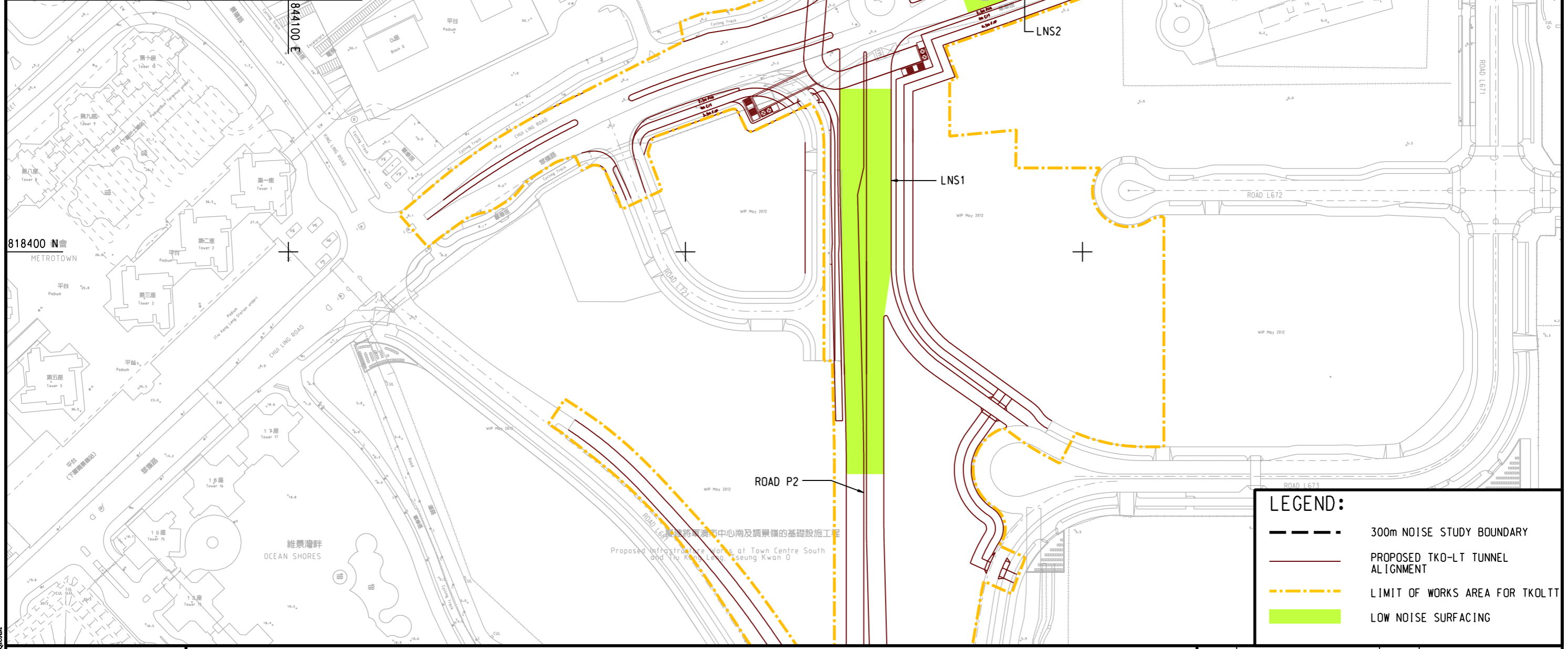
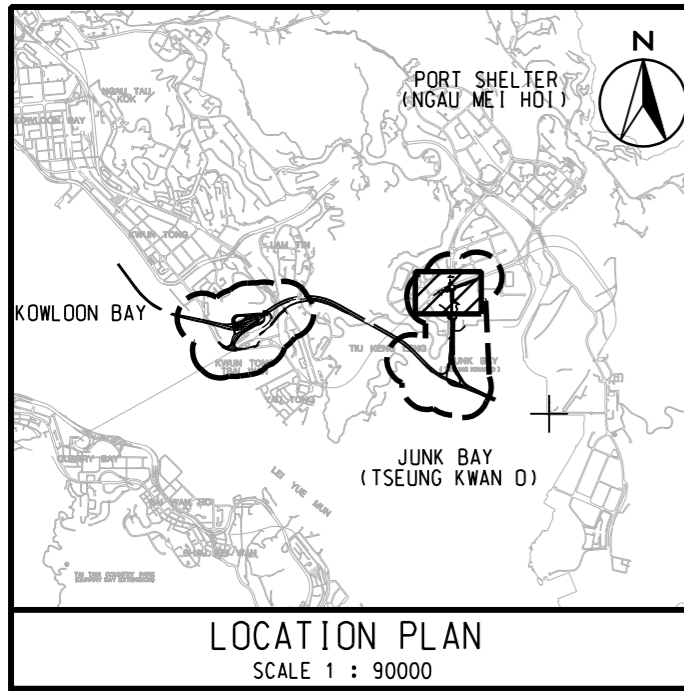


AGREEMENT NO. CE 42/2008 (CE)
TSEUNG KWAN O - LAM TIN TUNNEL AND ASSOCIATED WORKS - INVESTIGATION

LOCATION OF PROPOSED NOISE MITIGATION MEASURES (FOR EXISTING NSRS)

SHEET 2 OF 4

SCALE	A3 1 : 2000	DATE	JAN. 2013
CHECK	--	DRAWN	HLLS
JOB No.	60097677	DRAWING No.	FIGURE 3.3
		REV	--



LEGEND:

- 300m NOISE STUDY BOUNDARY
- PROPOSED TKO-LT TUNNEL ALIGNMENT
- LIMIT OF WORKS AREA FOR TKO-LT
- LOW NOISE SURFACING

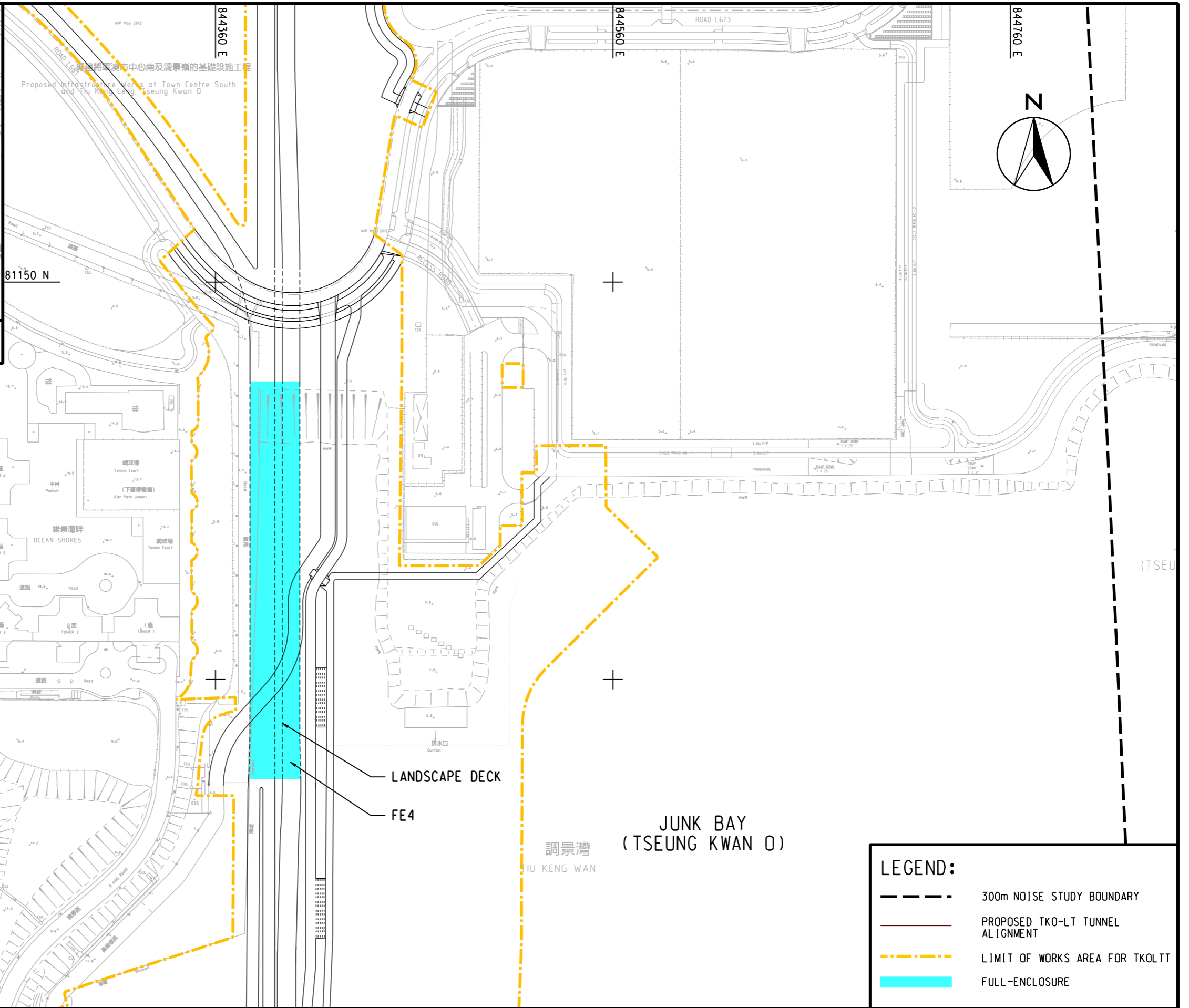
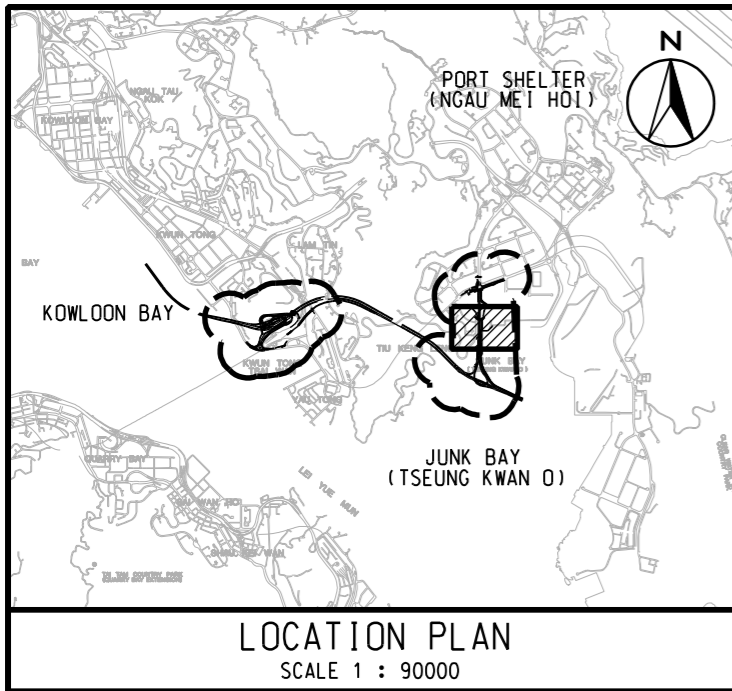


AGREEMENT NO. CE 42/2008 (CE)
TSEUNG KWAN O - LAM TIN TUNNEL AND ASSOCIATED WORKS - INVESTIGATION

LOCATION OF PROPOSED NOISE MITIGATION MEASURES (FOR EXISTING NSRS) SHEET 3 OF 4

SCALE	A3 1 : 2000	DATE	JAN. 2013
CHECK	--	DRAWN	HLL
JOB No.	60097677	DRAWING No.	FIGURE 3.3
		REV	--

Plot File by: 1/29/2013 QTCAM



Plot File by: 1/29/2013 QTCAM



AGREEMENT NO. CE 42/2008 (CE)
TSEUNG KWAN O - LAM TIN TUNNEL AND ASSOCIATED WORKS - INVESTIGATION

LOCATION OF PROPOSED NOISE MITIGATION MEASURES (FOR EXISTING NSRS)

SHEET 4 OF 4

SCALE	A3 1 : 2000	DATE	JAN. 2013
CHECK	--	DRAWN	HLLS
JOB No.	60097677	DRAWING No.	FIGURE 3.3
		REV	--