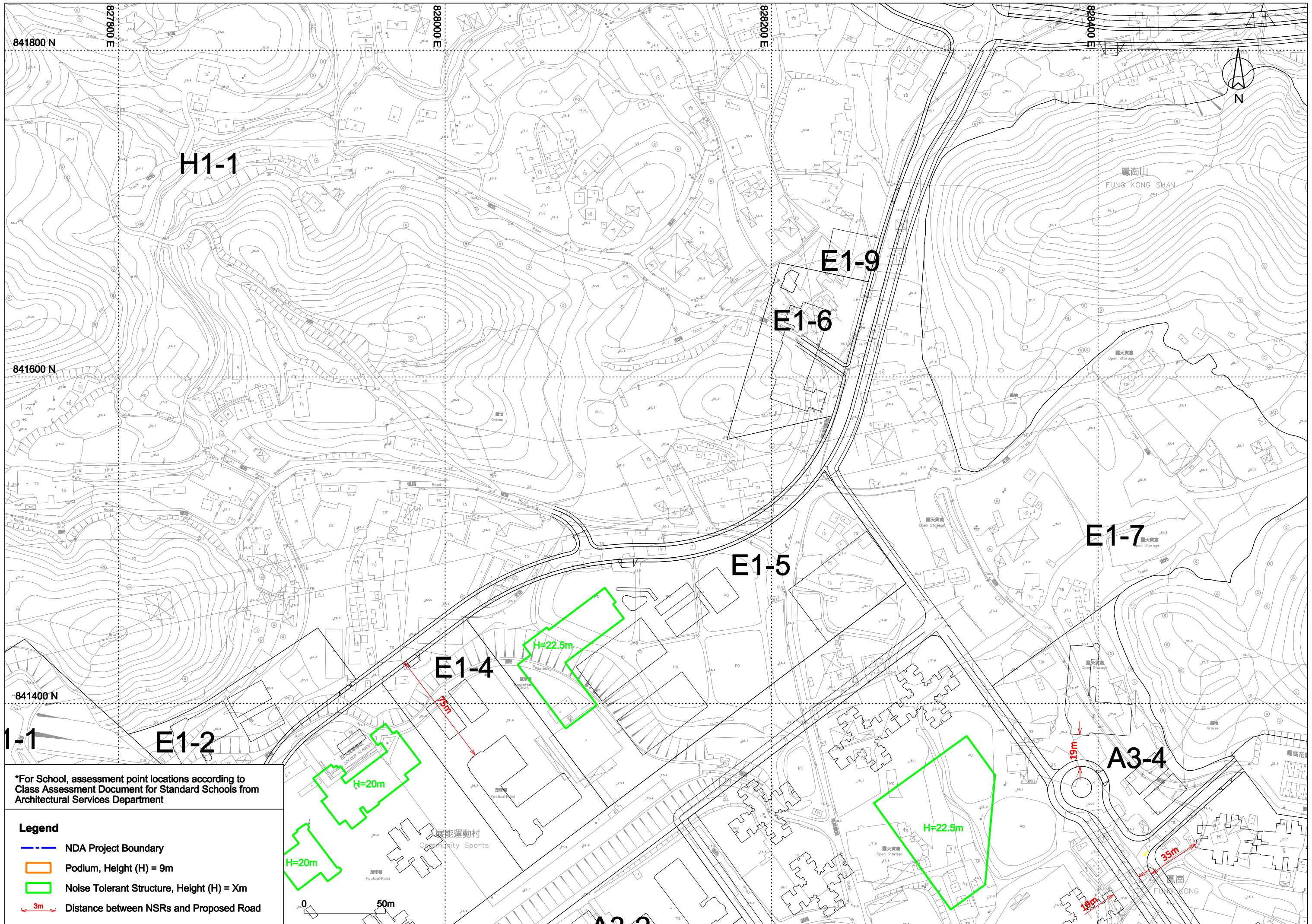






*For School, assessment point locations according to Class Assessment Document for Standard Schools from Architectural Services Department

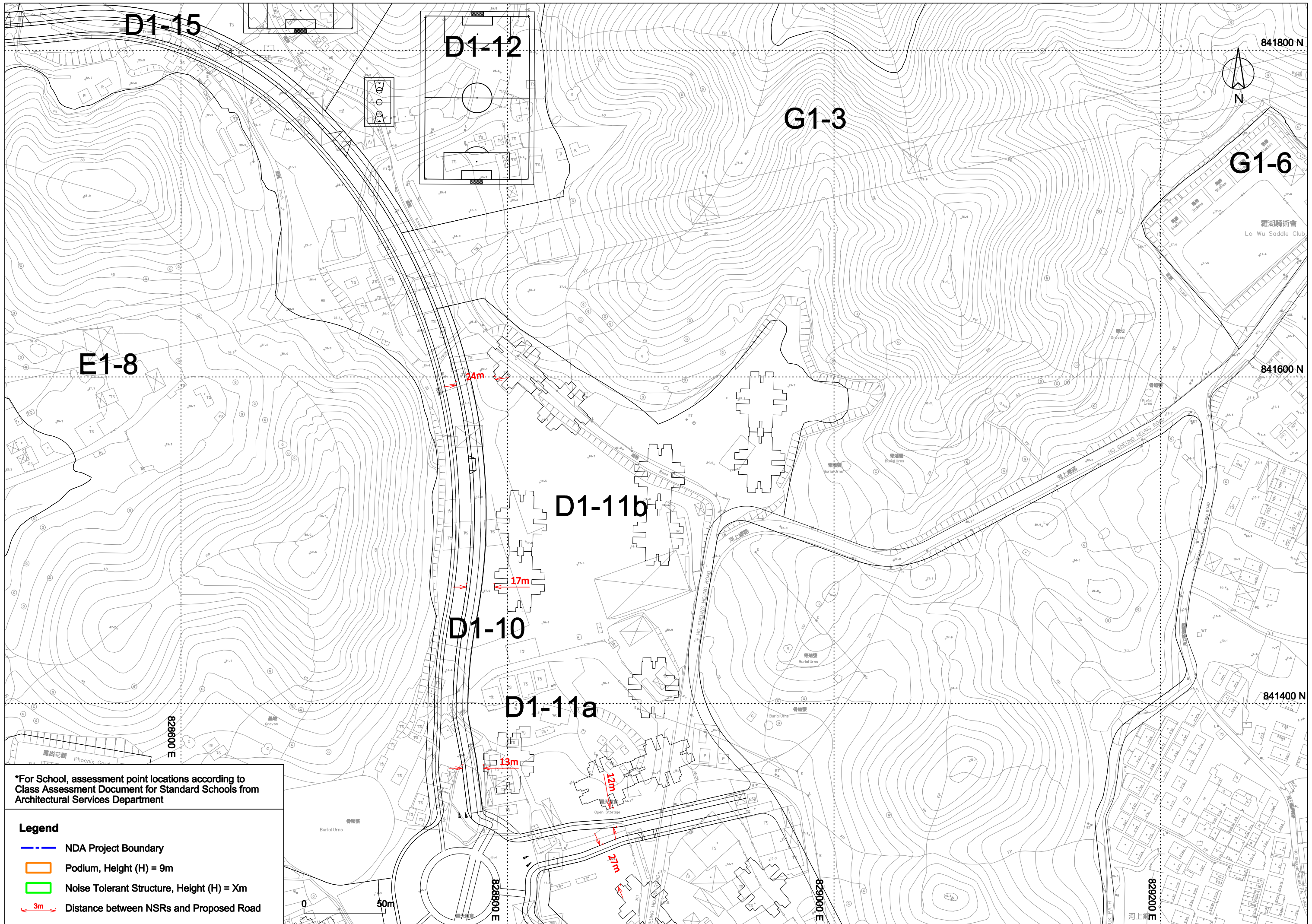
- Legend**
- - - NDA Project Boundary
 - Podium, Height (H) = 9m
 - Noise Tolerant Structure, Height (H) = Xm
 - ↔ 3m Distance between NSRs and Proposed Road



*For School, assessment point locations according to Class Assessment Document for Standard Schools from Architectural Services Department

Legend

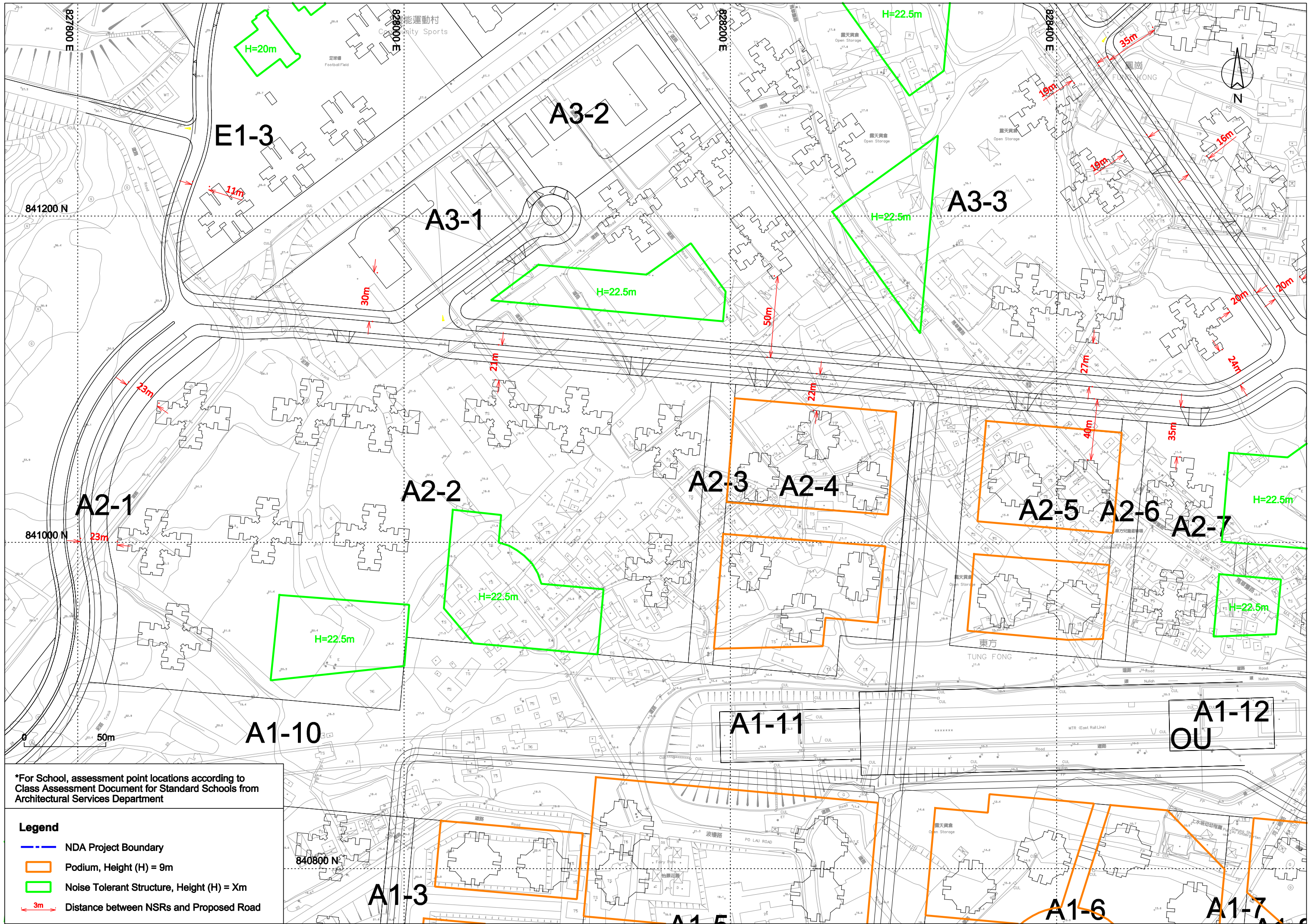
-  NDA Project Boundary
-  Podium, Height (H) = 9m
-  Noise Tolerant Structure, Height (H) = Xm
-  3m Distance between NSRs and Proposed Road



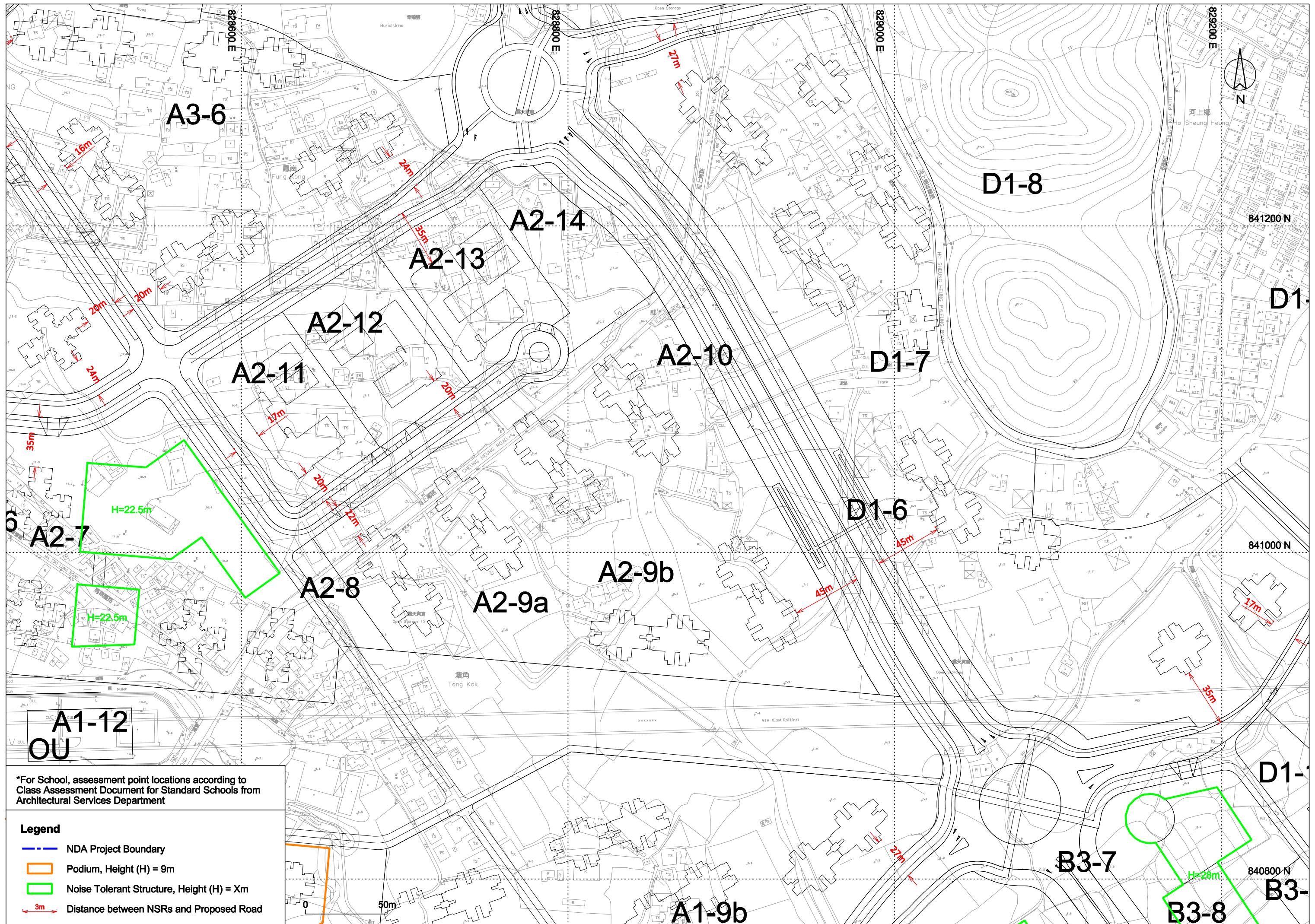
*For School, assessment point locations according to Class Assessment Document for Standard Schools from Architectural Services Department

Legend

- NDA Project Boundary
- Podium, Height (H) = 9m
- Noise Tolerant Structure, Height (H) = Xm
- ↔ 3m Distance between NSRs and Proposed Road



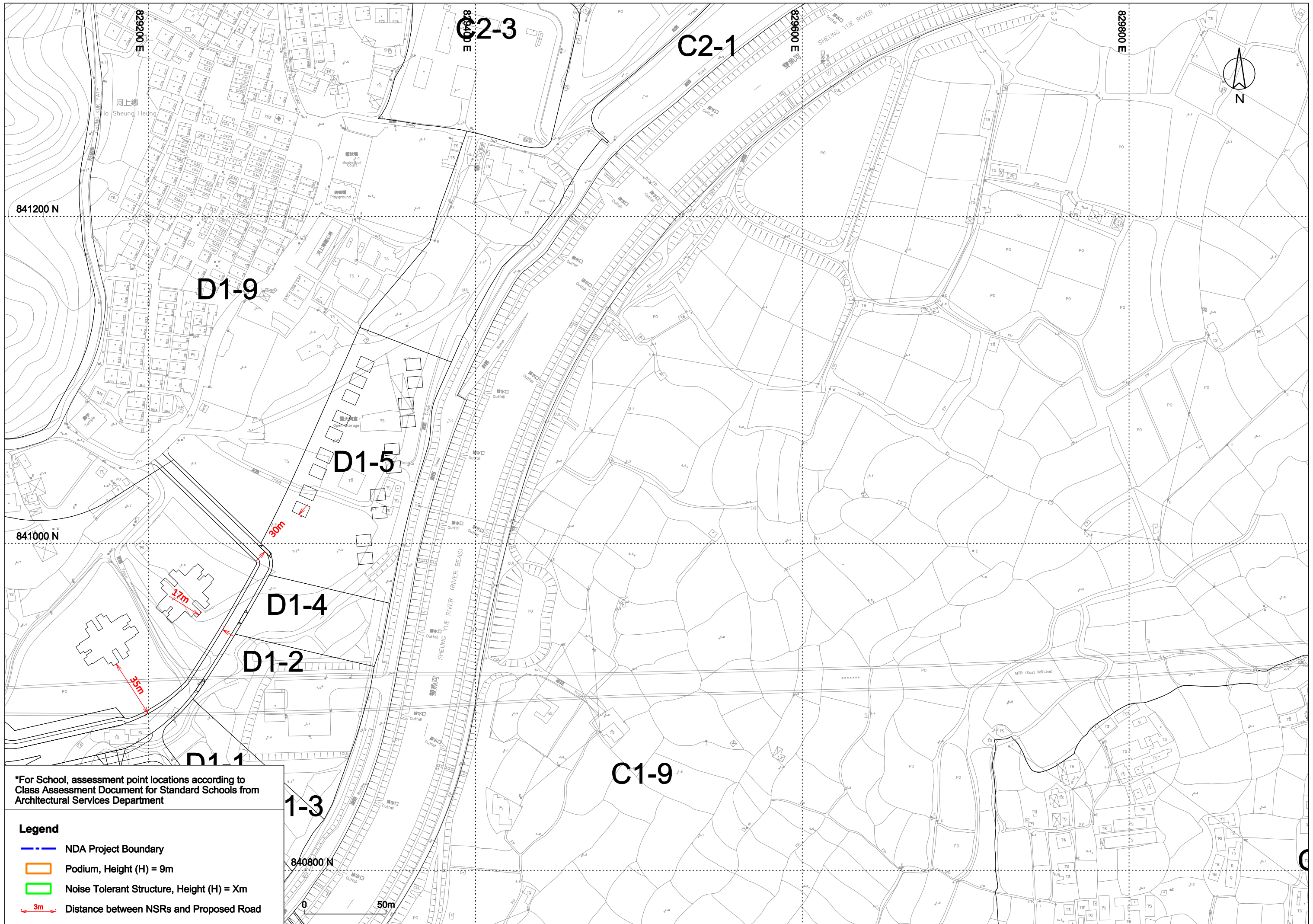
*For School, assessment point locations according to Class Assessment Document for Standard Schools from Architectural Services Department



*For School, assessment point locations according to Class Assessment Document for Standard Schools from Architectural Services Department

Legend

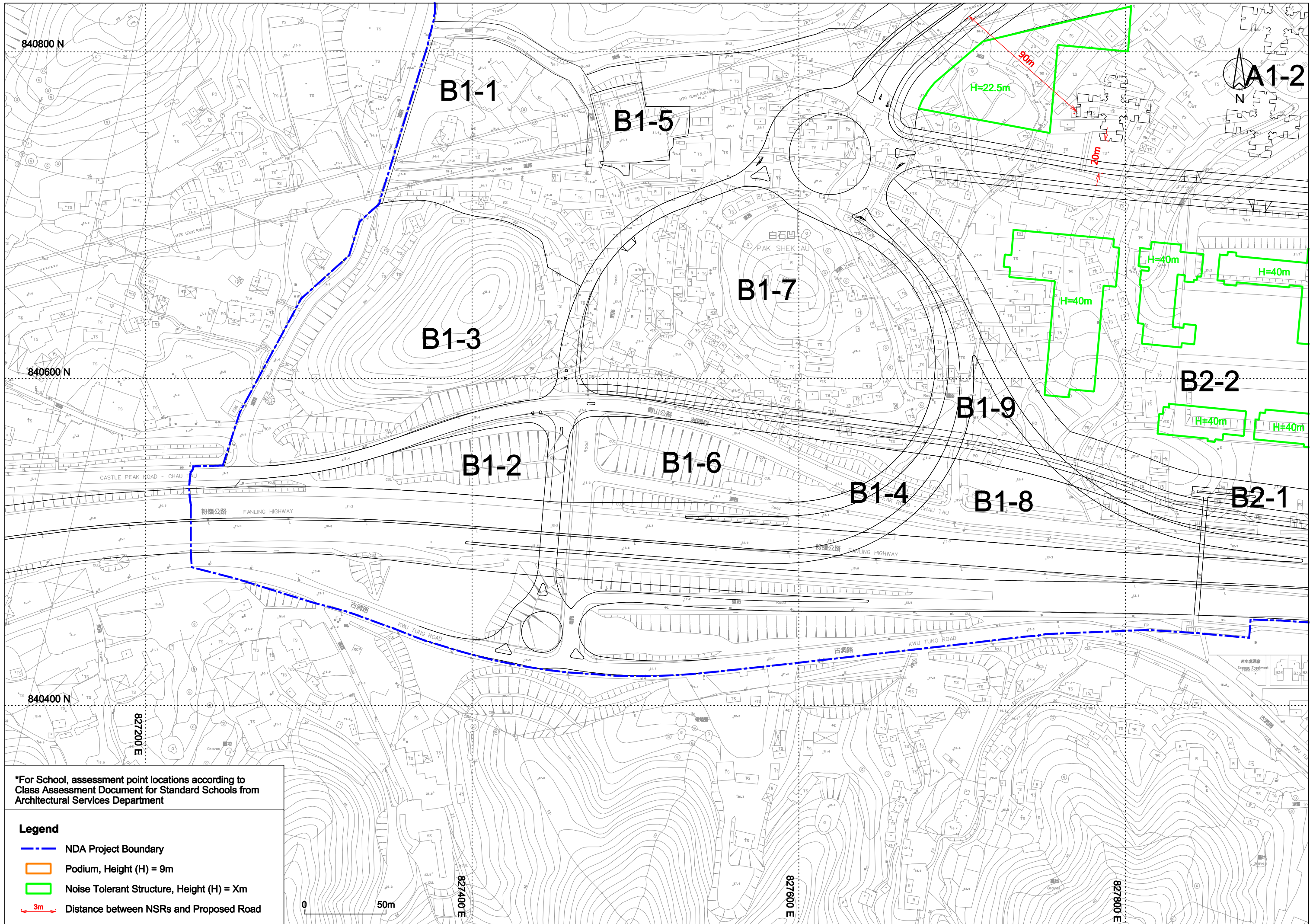
- NDA Project Boundary
- Podium, Height (H) = 9m
- Noise Tolerant Structure, Height (H) = Xm
- ↔ 3m Distance between NSRs and Proposed Road



*For School, assessment point locations according to Class Assessment Document for Standard Schools from Architectural Services Department

Legend

- NDA Project Boundary
- Podium, Height (H) = 9m
- Noise Tolerant Structure, Height (H) = Xm
- ↔ 3m Distance between NSRs and Proposed Road



840800 N

840600 N

840400 N

827200 E

827400 E

827600 E

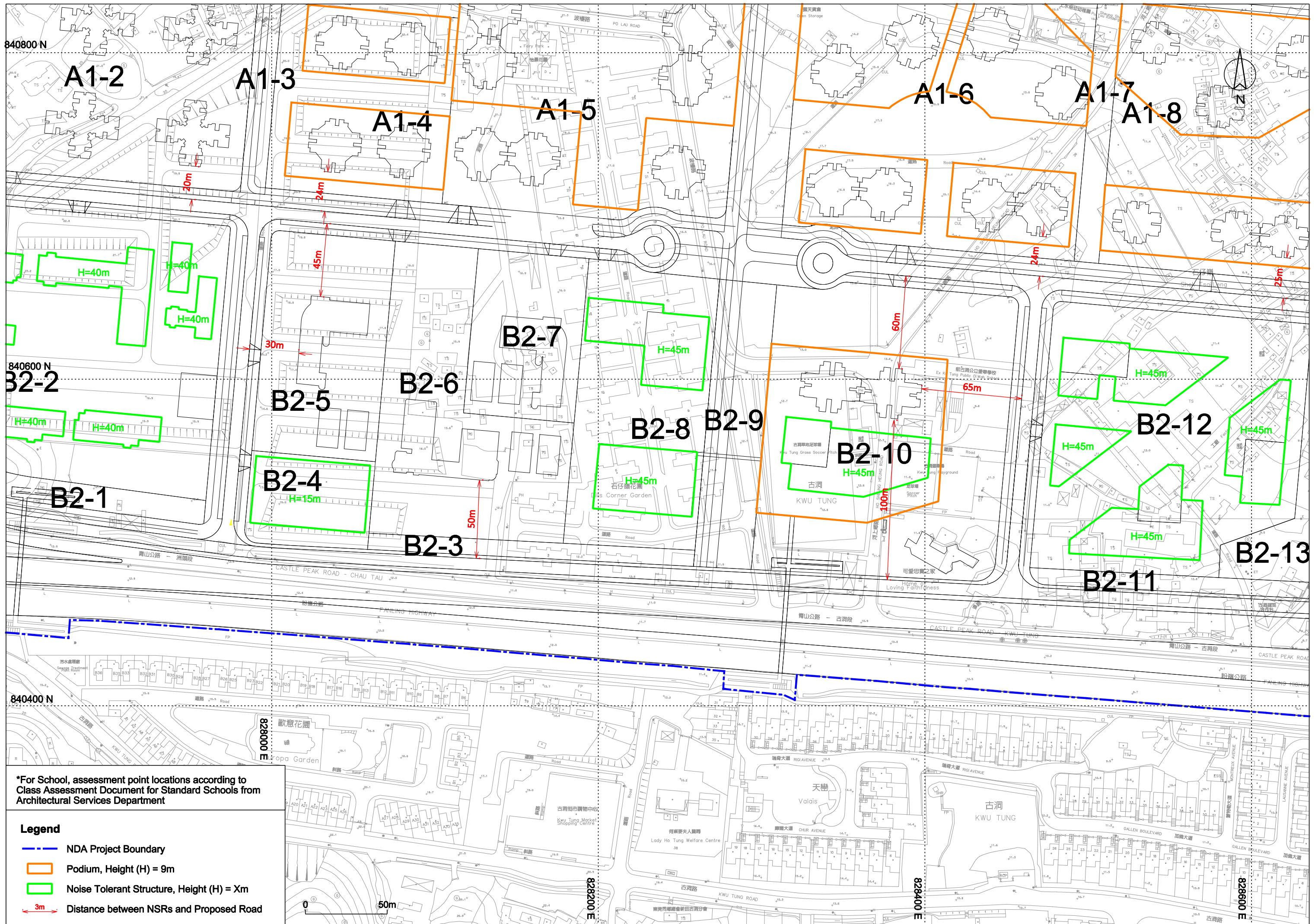
827800 E

*For School, assessment point locations according to Class Assessment Document for Standard Schools from Architectural Services Department

Legend

- - - NDA Project Boundary
- Podium, Height (H) = 9m
- Noise Tolerant Structure, Height (H) = Xm
- ↔ 3m Distance between NSRs and Proposed Road

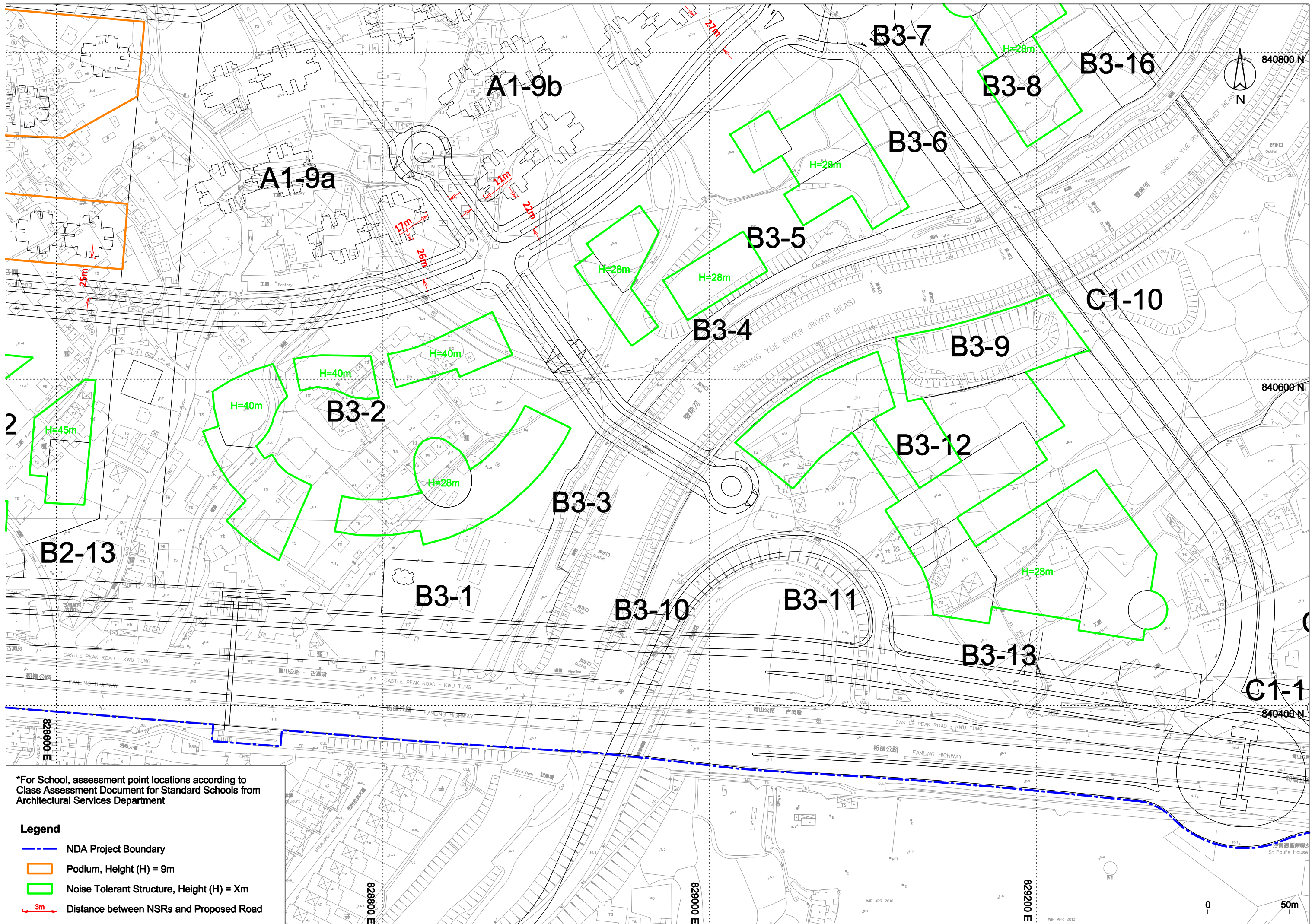
0 50m



*For School, assessment point locations according to Class Assessment Document for Standard Schools from Architectural Services Department

Legend

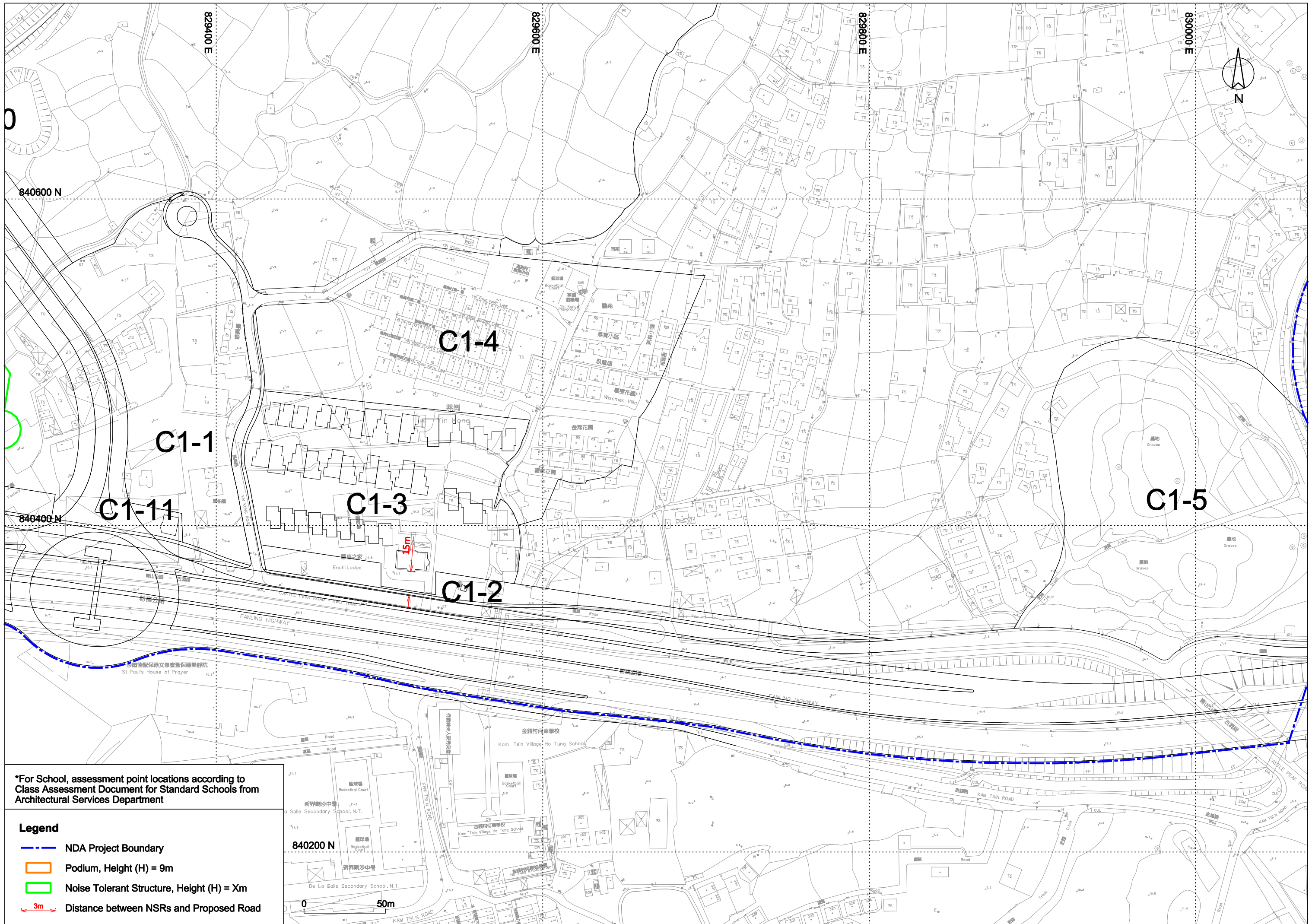
- - - NDA Project Boundary
- Podium, Height (H) = 9m
- Noise Tolerant Structure, Height (H) = Xm
- ↔ 3m Distance between NSRs and Proposed Road



*For School, assessment point locations according to Class Assessment Document for Standard Schools from Architectural Services Department

Legend

- - - NDA Project Boundary
- Podium, Height (H) = 9m
- Noise Tolerant Structure, Height (H) = Xm
- ↔ 3m Distance between NSRs and Proposed Road



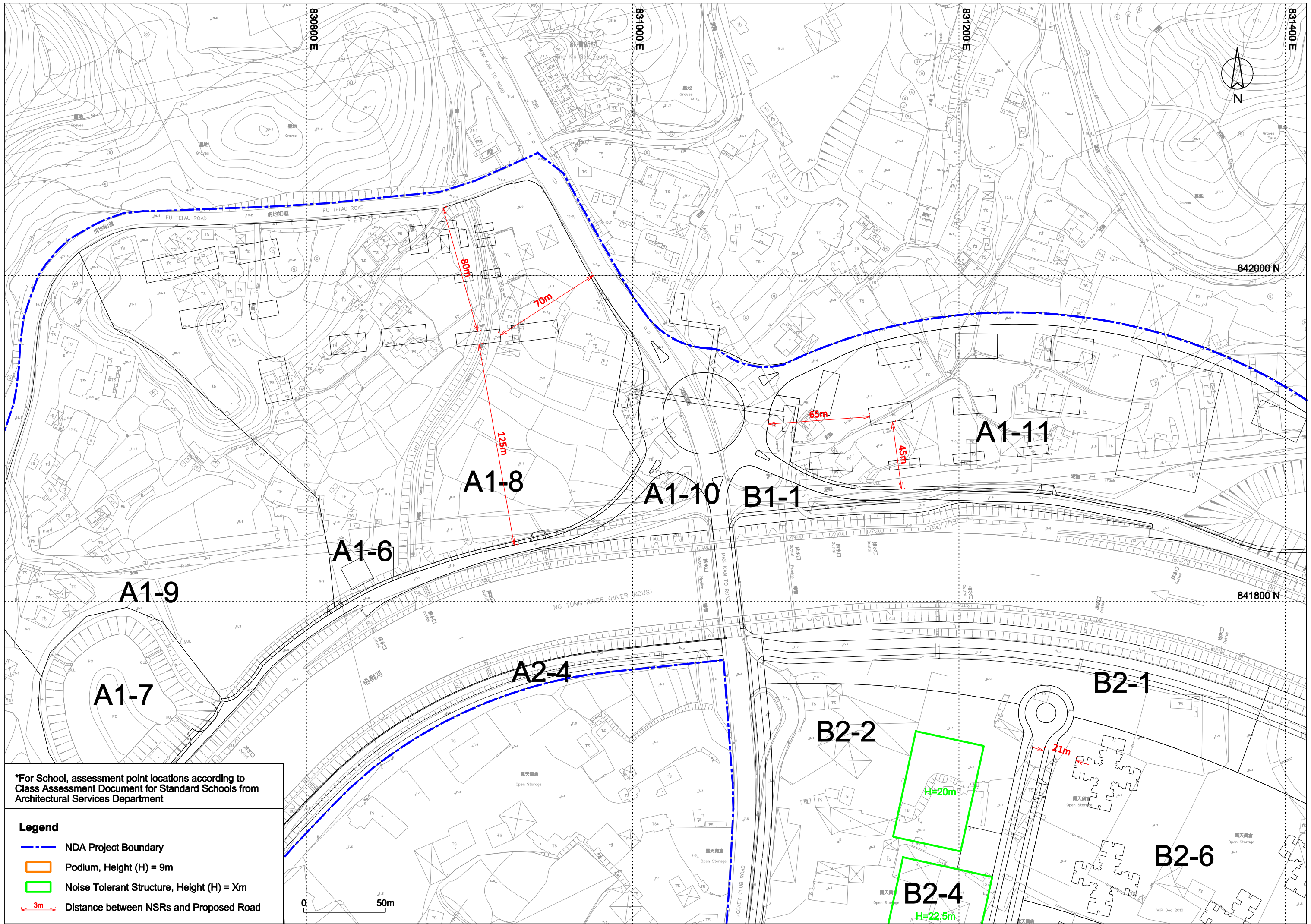
*For School, assessment point locations according to Class Assessment Document for Standard Schools from Architectural Services Department

Legend

- - - NDA Project Boundary
- Podium, Height (H) = 9m
- Noise Tolerant Structure, Height (H) = Xm
- ↔ 3m Distance between NSRs and Proposed Road

840200 N

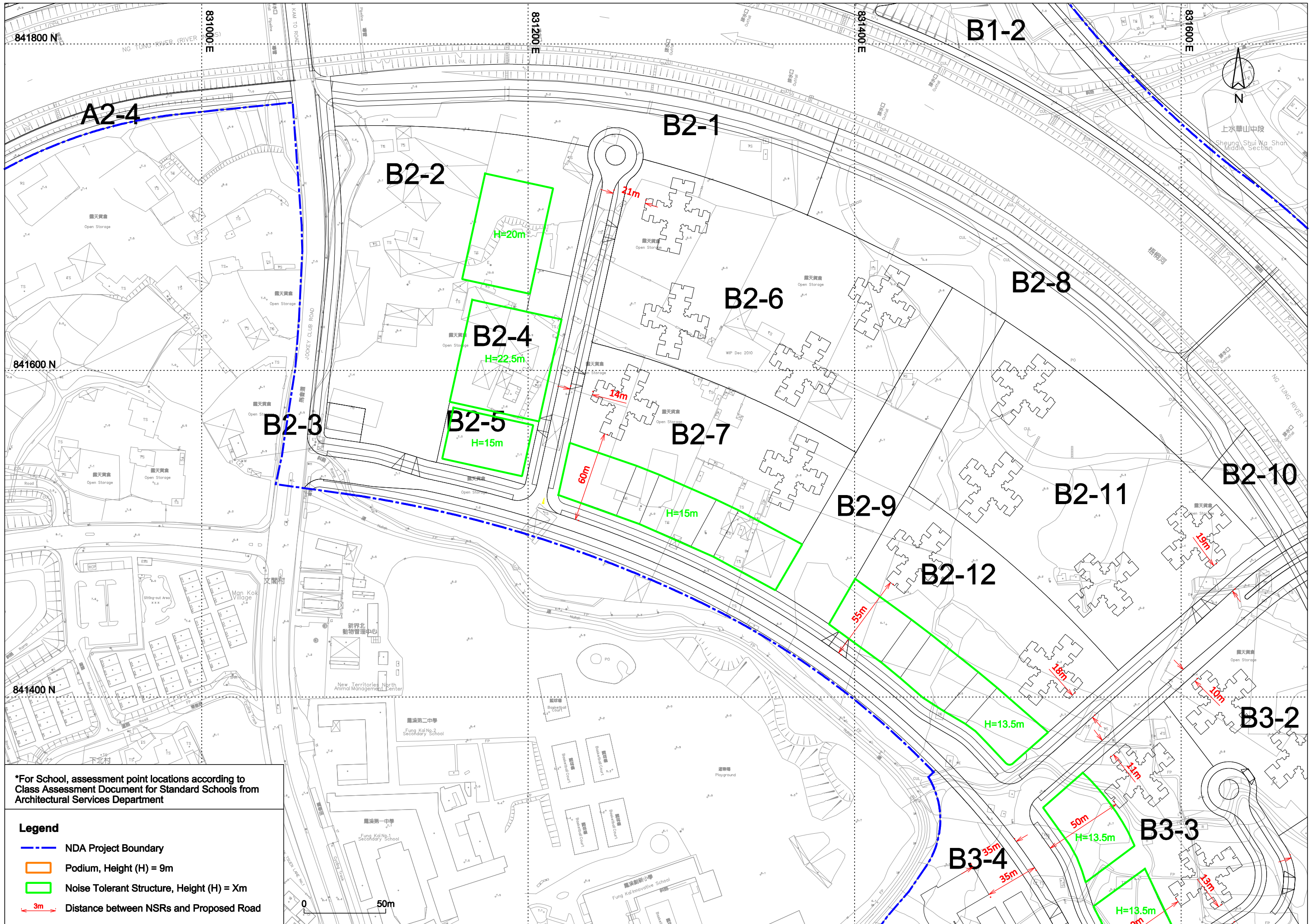
0 50m



*For School, assessment point locations according to Class Assessment Document for Standard Schools from Architectural Services Department

- Legend**
- NDA Project Boundary
 - Podium, Height (H) = 9m
 - Noise Tolerant Structure, Height (H) = Xm
 - 3m Distance between NSRs and Proposed Road

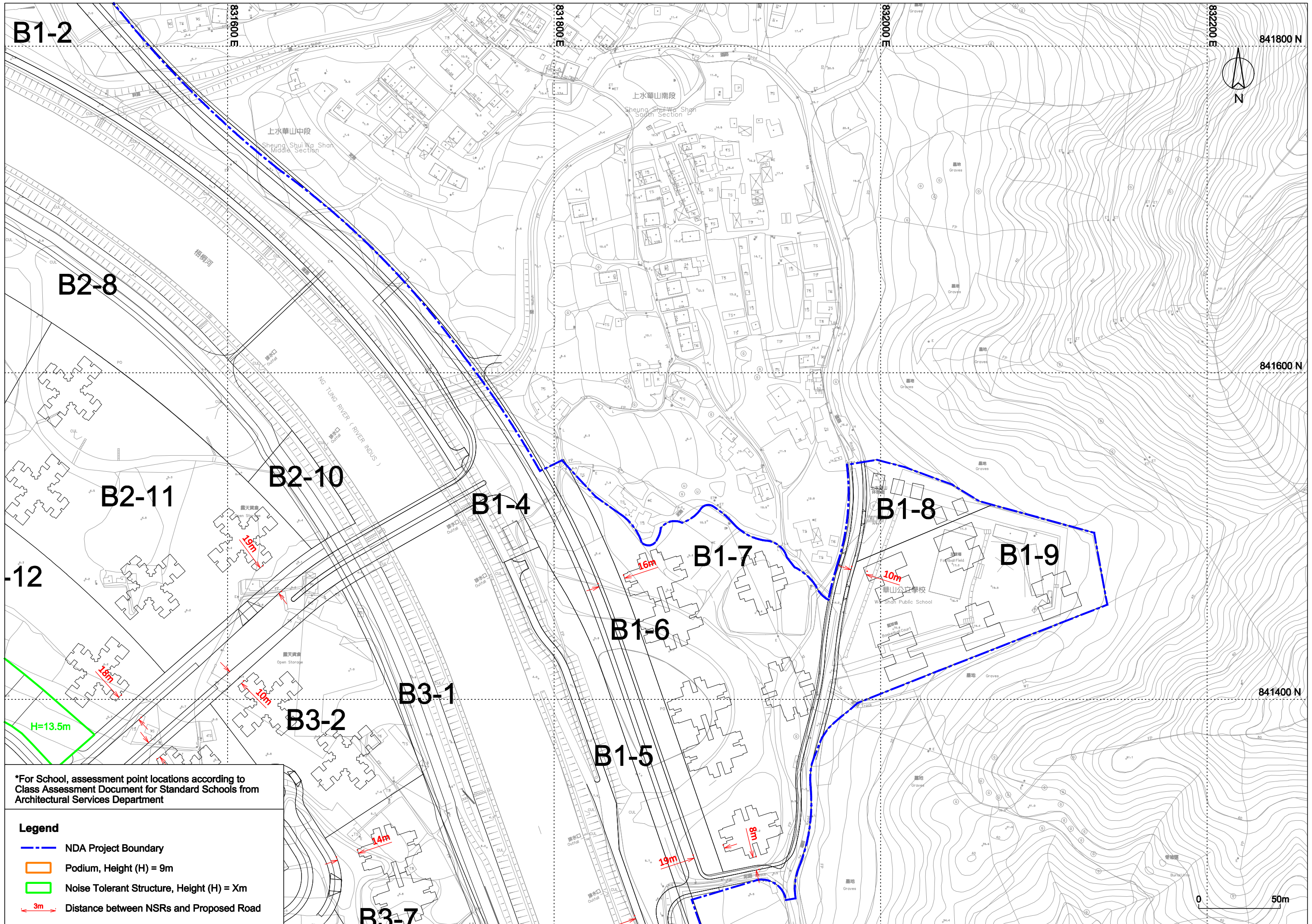
0 50m



*For School, assessment point locations according to Class Assessment Document for Standard Schools from Architectural Services Department

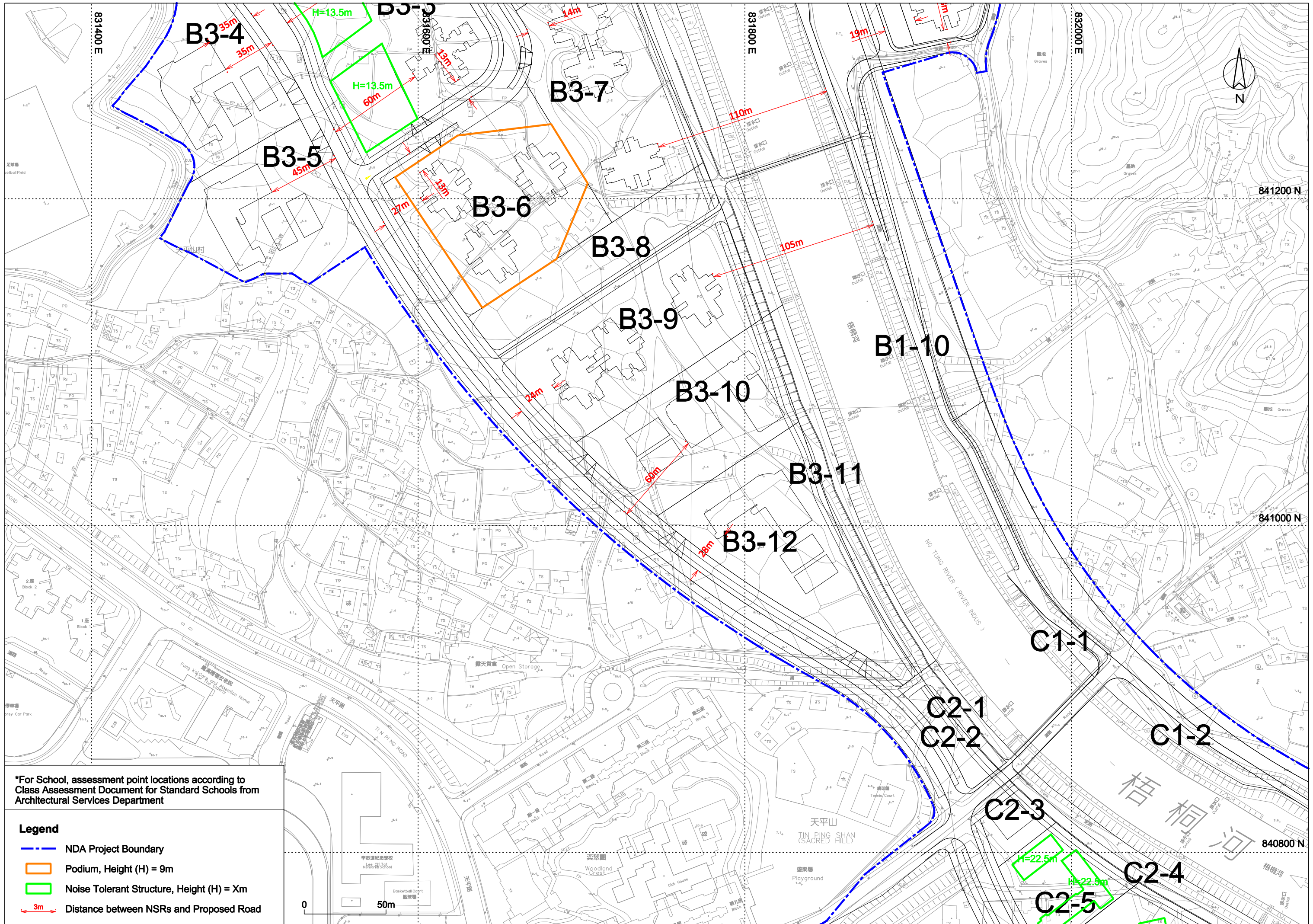
Legend

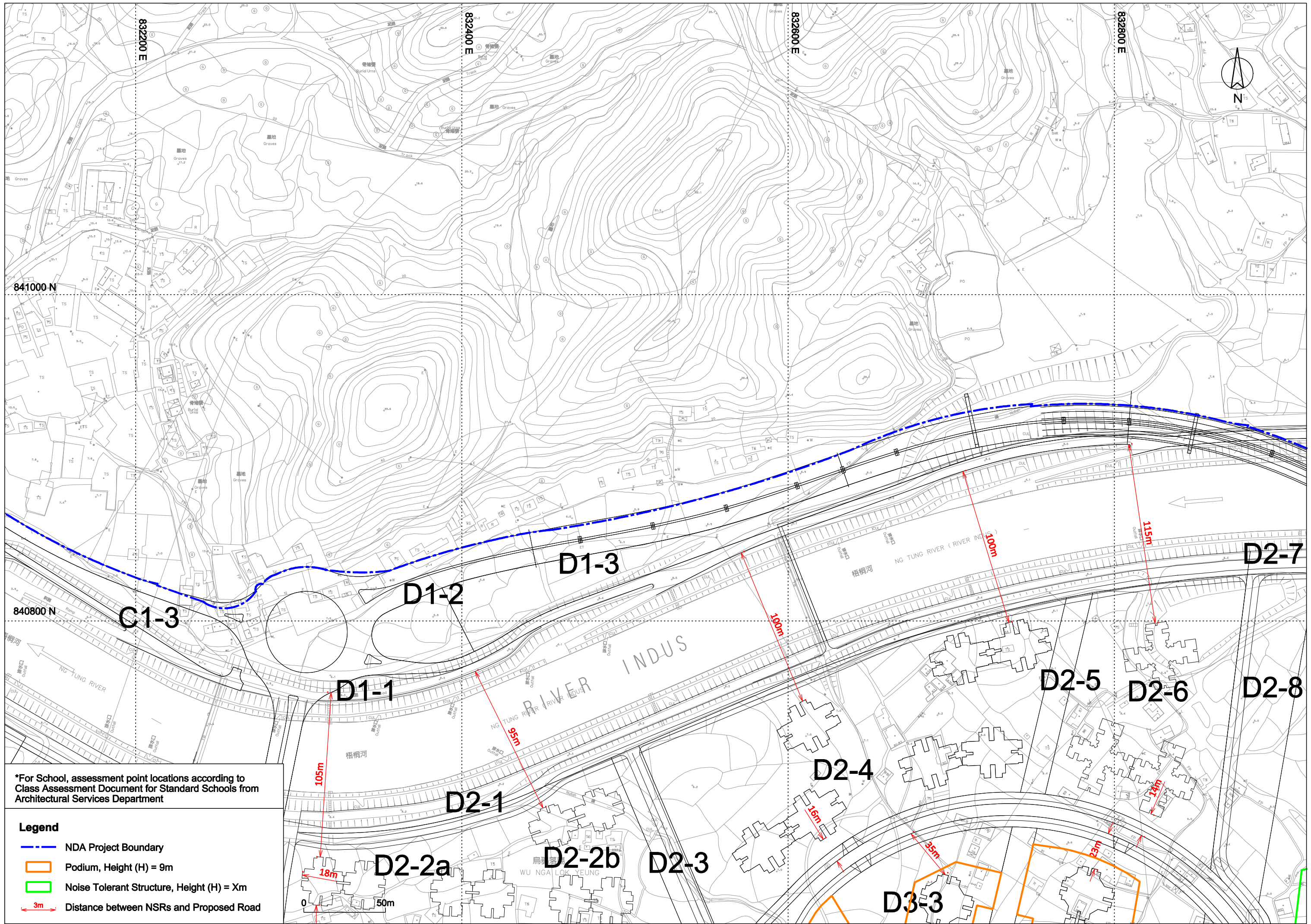
- - - NDA Project Boundary
- Podium, Height (H) = 9m
- Noise Tolerant Structure, Height (H) = Xm
- ↔ 3m Distance between NSRs and Proposed Road



*For School, assessment point locations according to Class Assessment Document for Standard Schools from Architectural Services Department

- Legend**
- NDA Project Boundary
 - Podium, Height (H) = 9m
 - Noise Tolerant Structure, Height (H) = Xm
 - ← 3m → Distance between NSRs and Proposed Road

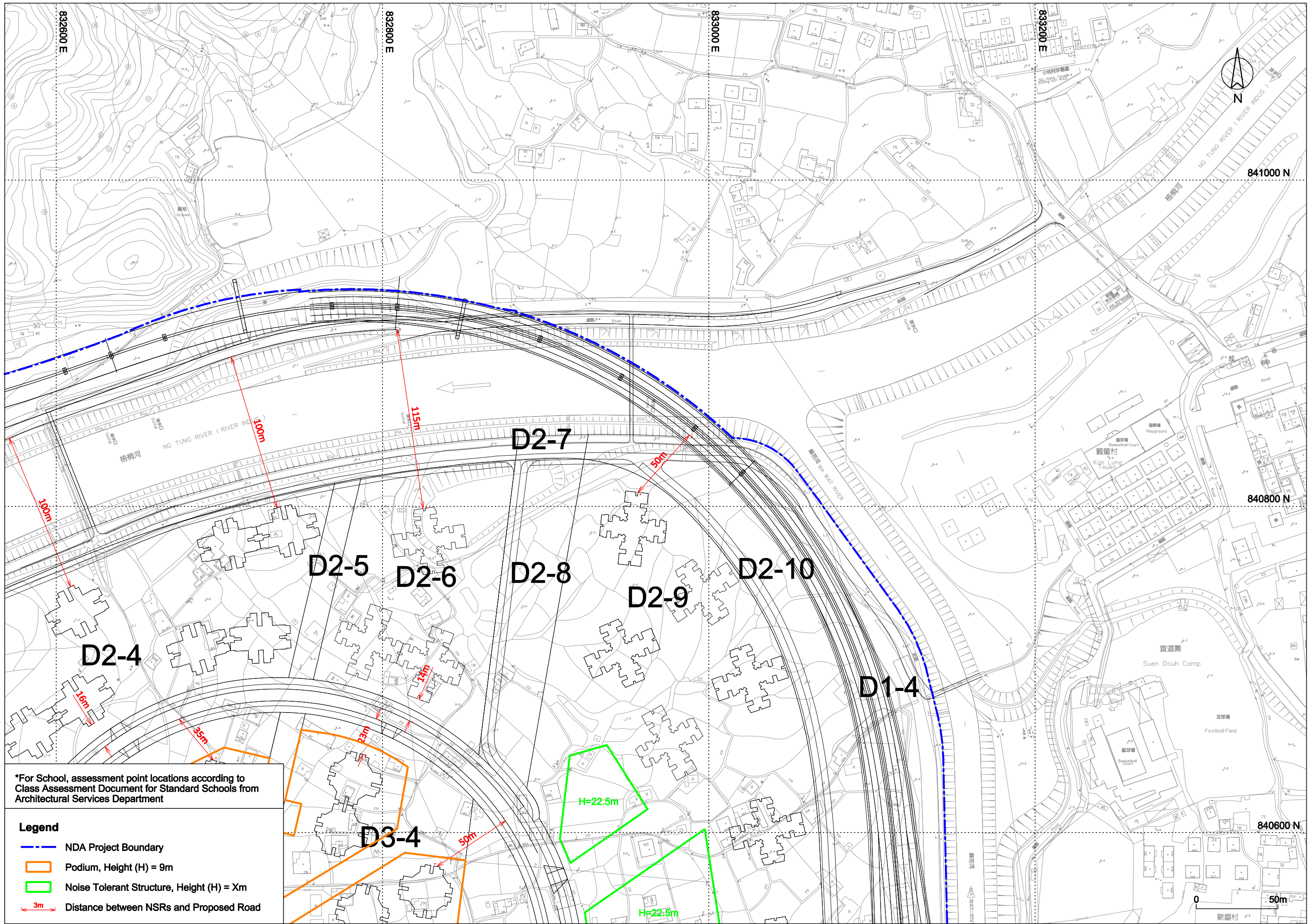




*For School, assessment point locations according to Class Assessment Document for Standard Schools from Architectural Services Department

Legend

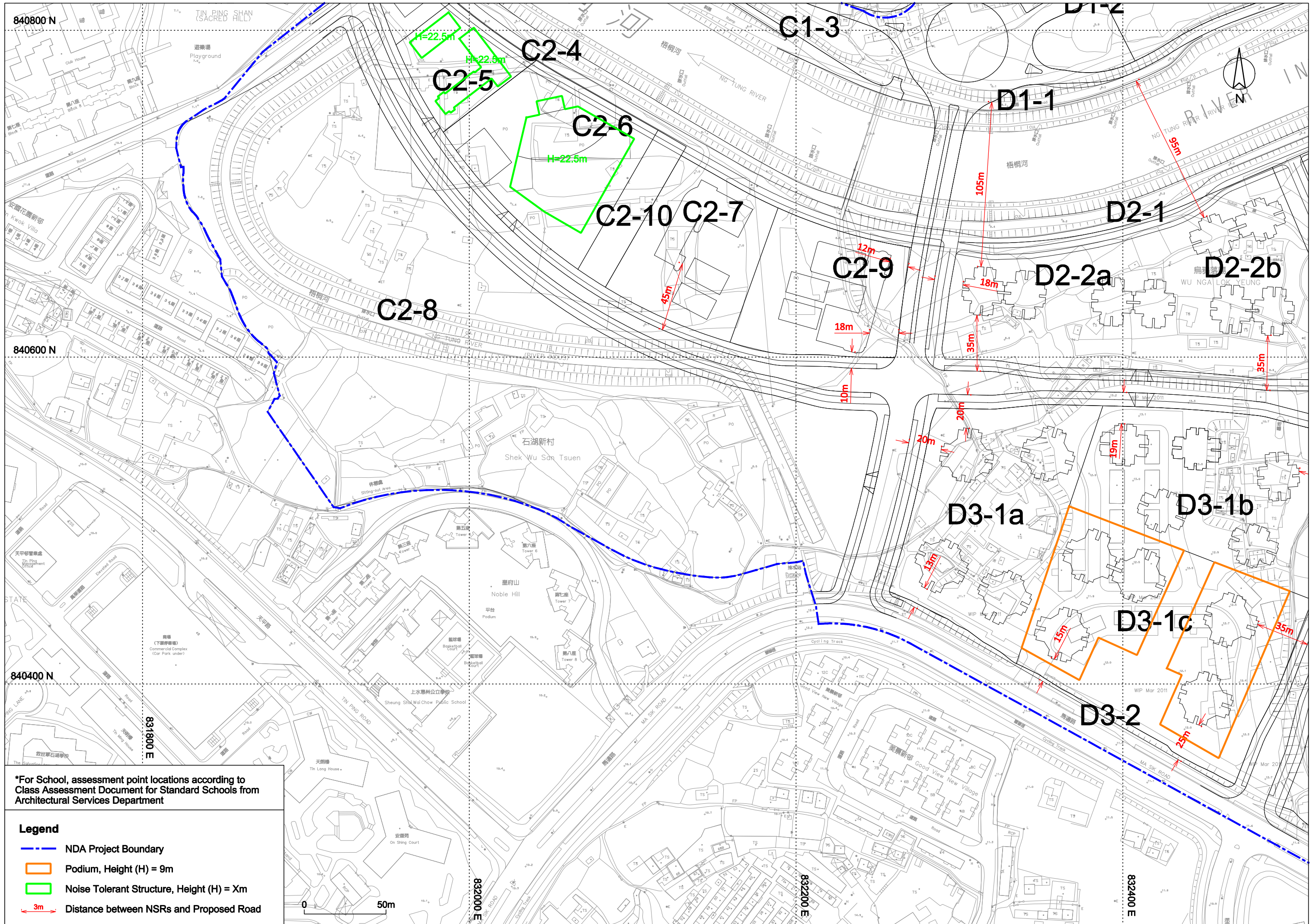
- NDA Project Boundary
- Podium, Height (H) = 9m
- Noise Tolerant Structure, Height (H) = X m
- ← 3m → Distance between NSRs and Proposed Road



*For School, assessment point locations according to Class Assessment Document for Standard Schools from Architectural Services Department

Legend

- - - NDA Project Boundary
- Podium, Height (H) = 9m
- Noise Tolerant Structure, Height (H) = Xm
- ↔ 3m Distance between NSRs and Proposed Road



840800 N

840600 N

840400 N

831800 E

832000 E

832200 E

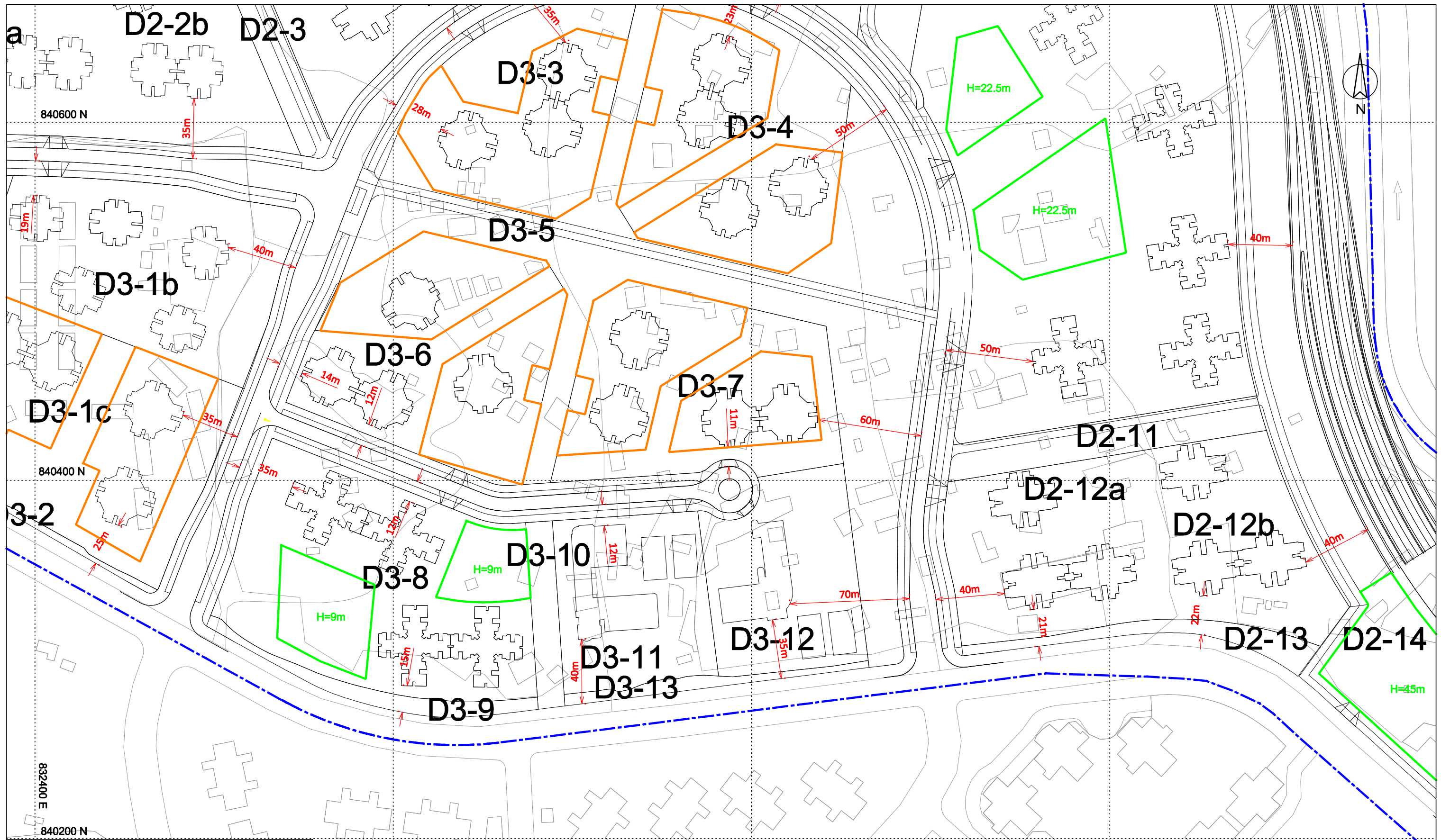
832400 E

*For School, assessment point locations according to Class Assessment Document for Standard Schools from Architectural Services Department

Legend

- - - NDA Project Boundary
- ▭ Podium, Height (H) = 9m
- ▭ Noise Tolerant Structure, Height (H) = Xm
- ↔ 3m Distance between NSRs and Proposed Road

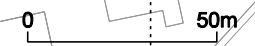
0 50m

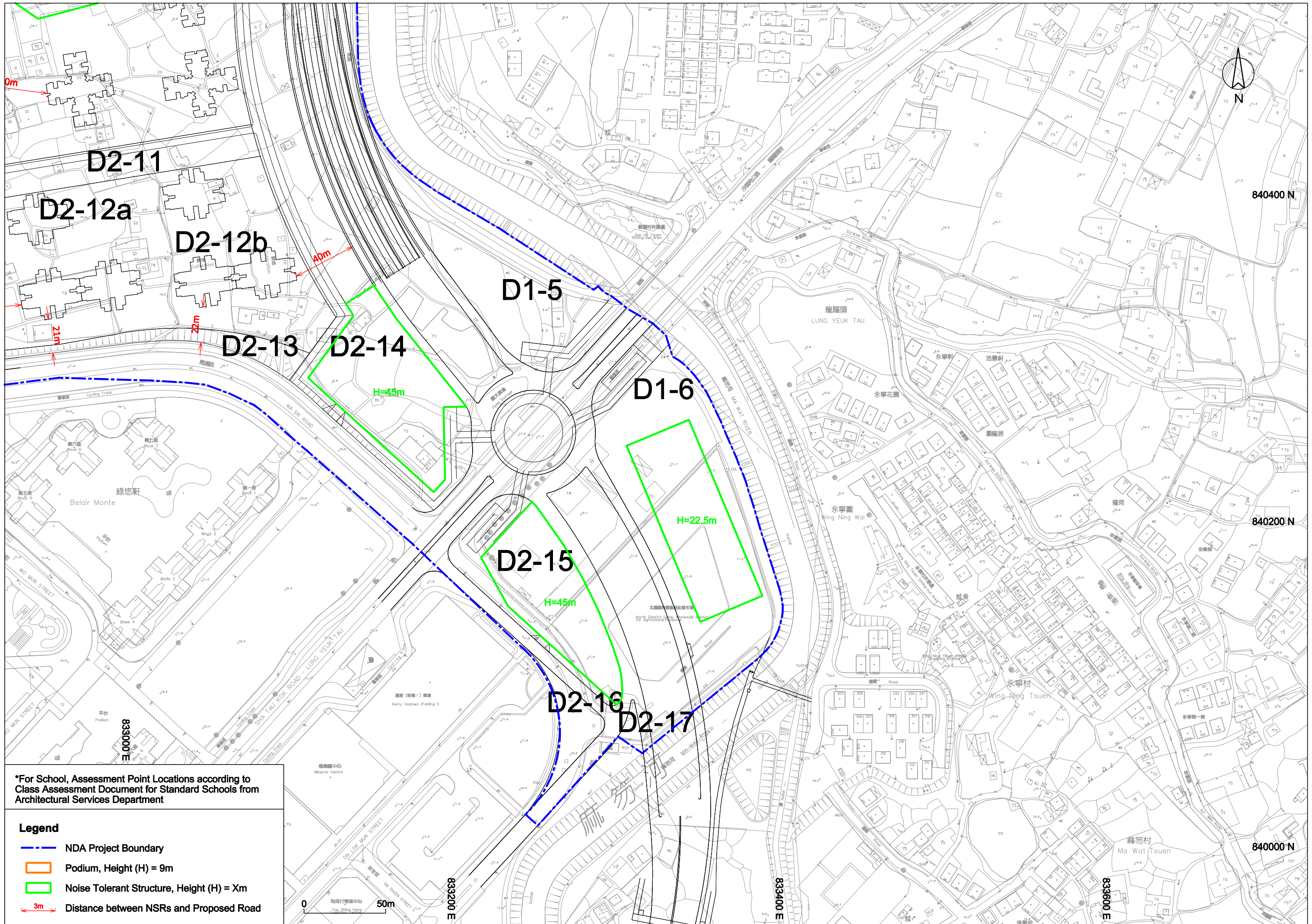


*For School, assessment point locations according to Class Assessment Document for Standard Schools from Architectural Services Department

Legend

- - - NDA Project Boundary
- Podium, Height (H) = 9m
- Noise Tolerant Structure, Height (H) = Xm
- ↔ 3m Distance between NSRs and Proposed Road





*For School, Assessment Point Locations according to Class Assessment Document for Standard Schools from Architectural Services Department

Legend

- - - NDA Project Boundary
- Podium, Height (H) = 9m
- Noise Tolerant Structure, Height (H) = Xm
- ↔ 3m Distance between NSRs and Proposed Road