

- VEHICLE REPAIR, MAINTENANCE YARD AND VEHICLE MOTOR COMPONENT
- CAR DUMPS
- TRAILER PARKS WITH REPAIR ACTIVITIES
- SCRAP YARDS/ METAL WORKSHOPS
- PETROL STATIONS
- CONCRETE BATCHING PLANTS
- SAW MILLS
- UMBRELLA MANUFACTURING FACILITIES
- PESTICIDE MANUFACTURING FACILITY
- FOOD PROCESSING
- CONSTRUCTION MATERIALS EQUIPMENT
- STORAGE AREA OF UNCONTROLLED DUMPING OR BURNING
- OTHERS OR UNDETERMINED
- NDA BOUNDARY

Table A1 Potentially Contaminated Sites at Kwu Tung North SGA

Site No.	Current Land Use (Based on June and July 2000 Site Appraisal)	Potential Contaminating Land Use/ Evidence of Contamination	Map Location	Lot No.	Preliminary Potential Contamination Rating*
1	Vehicle Repair and Car dump (paved)	heavy staining, vehicle parts, old vehicles	North of Castle Peak Road	DD92 - 467-470 , 148	A
2	Vehicle Repair (small scale) (paved)	light staining, old vehicles	North of Castle Peak Road	DD92 - 540RP, 541RP, 678	B
3	<i>Outside SGA Boundary (Disregarded)</i>	-	South of Castle Peak Road	No record	-
4	Construction Site Office /vehicle maintenance (paved)/storage of aggregates (half site)	Heavy staining, excavator parts, waste construction material	North of Castle Peak Road	DD92 - 679RP, 681RP	A
5	Vehicle and Container Yard (paved)	storage of vehicles	North of Castle Peak Road	DD92 - 879A.RP, 880C.RP, 903, 904	C
5a	Wood Mill (also in same area, Hing Yip Electric Co. and Hing Yip Rattan Co.)	no access, so no visual inspection possible	North of Castle Peak Road	DD92 - 926, 739, 925, 740, 741, 745, 739RP, 926C.RP, 739B.RP, 739A, 739C, 925RP, 912RP, 911C.RP, 910, 744, 745RP, 739A, 740RP, 741B, 741F, 742RP, 742B, 743A, 742A, 741C	C
6	Vehicle Repair (small scale) (AGREBA) (partially paved)	staining not observed from road, vehicle parts, old vehicles	North of Castle Peak Road	DD92 - 879A.RP, 879A.1, 874RP, 878C.RP, 879B1, 879B.RP	A
7	Vehicle Repair and Car dump (paved)	heavy staining, vehicle parts, old vehicles stacked	Side road, north of Castle Peak Road	DD95 - 1160, 1161, DD92 - 868	A
8	Vehicle Repair and Car dump (partially paved) , refuelling station (illegal?)	heavy staining, fuelling of vehicles, old vehicles stacked	Side road, north of Castle Peak Road	DD95 - 1157, DD92 - 871	A
9	<i>Outside SGA Boundary (Disregarded)</i>	-	North of Castle Peak Road	-	-
10	<i>Site cleared for main drainage works</i>	-	North of Castle Peak Road	-	-
11	<i>Site cleared for main drainage works</i>	-	South of Castle Peak Road	-	-
12	Construction materials (unpaved)	construction equipment and vehicles	North of Castle Peak Road	DD95 - 719RP, 720RP, 717RP, 697, 698	C
13	<i>Site cleared for main drainage works</i>	-	North of Castle Peak Road	-	-
14	Open storage and container park (unpaved)	timber storage, trailer maintenance works (limited access)	East of Ho Sheung Heung Road	DD95 - 196RP, 176, 194, 193, 1914, 191, 190, 189, 177, 178, 180, 181, 186, 187, 188, 215, 78, 79, 863, 864, 73, 76, 74, 70, 72, 71, 871, 868, 869, 870	B
14a	Site offices, material storage, warehouses (paved)	maintenance activities (no access)	West of Ho Sheung Heung Road	DD95 - 207, 208B, 210A, 195(A,RP)	B
14b	North East Storage (new warehouses), stone products, (paved)	no access	East of Ho Sheung Heung Road	DD95 - 197A, 198RP	C

Site No.	Current Land Use (Based on June and July 2000 Site Appraisal)	Potential Contaminating Land Use/ Evidence of Contamination	Map Location	Lot No.	Preliminary Potential Contamination Rating*
14c	Po Kwong Stone material warehouse (part of 14b)	no access	West of Ho Sheung Heung Road	DD95 - 161, 201-204, 198RP, 167A.RP, 168A.RP	C
15	Open storage (unpaved)	timber storage (limited access)	East of Ho Sheung Heung Road	DD95 - 860, 861	C
16	Paul. Y. ITC Site office, workshop, material storage yard (partially paved)	construction materials, vehicle maintenance (large site, limited access)	South of Ho Sheung Heung Pai Fung Road	DD95 - 46, 47, 48, 49	B
17	Construction materials (unpaved)	metal materials, cutting, welding operations, scrap metal	North of Castle Peak Road	DD95 - 730(A,5), 730(A,1), 730RP	B
18	Combined with 17	-	-	DD95 - 730(A,7), 730(A,4), 730(A,5)	B
19	Vehicle repair and maintenance, car dump (unpaved)	heavy staining of soil in several locations, oily residue in surface stream, vehicle parts, fuel drums and refuelling operations, tires, scrap metal,	North of Castle Peak Road	DD95 - 728G.RP, 729(A,6.RP), 729(A,5.RP), 728E, 728F, 728J	A
20	Combined with 19	-	North of Castle Peak Road	DD95 - 740RP, 738RP	A
21	Combined with 19	-	North of Castle Peak Road	DD95 - 736RP, 739RP	A
22	Combined with 19	-	North of Castle Peak Road	DD95 - 736RP, 739RP	A
23	Combined with 19	-	North of Castle Peak Road	DD95 - 734RP, 736RP	A
23a	Metal workshop, small (paved)	metal cutting and welding (limited access)	North of Castle Peak Road	DD95 - STT586	C
23b	Petrol Station (illegal) (partially paved) Shell Gas	refuelling operation, fuel drums, staining,	North of Castle Peak Road	DD95 - TT9636	A
23c	Wai Tat Trading Co., metal workshop, small (paved)	metal cutting and welding (limited access)	North of Castle Peak Road	DD95 - STT599	B
24	Car Park	paved	North of Castle Peak Road	DD95 - 1034	C
25	Vehicle repair and maintenance (paved) small scale	staining of concrete, scrap metal, vehicle parts	South of Ho Sheung Heung Pai Fung Road	DD95 - 29, 31, 33	A
26	Open storage (unpaved) uncontrolled dumping.	Bricks, scrap metal, construction materials	South of Ho Sheung Heung Pai Fung Road	DD95 - 29	B
27	Open storage (unpaved) uncontrolled dumping.	Old fuel drums, machinery (electric generator) and ropes	South of Ho Sheung Heung Pai Fung Road	DD95 - 1971	B
28	Vinyl Raincoats and Umbrellas MFG Co. (paved)	limited access, storage of materials around site, containers etc	East of Ho Sheung Heung Road	DD95 - 770(A.RP), 769, 768A, 768B, 767RP, 768RP, 768C	B
28a	Stone cutting and storage.	Stone and dress stone, no access	East of Ho Sheung Heung Road	DD95 - 761(B), 762(B), 758, 759(B)	C
28b	Ying Fung Distillery Ltd. Licence No.D13405 L (paved).	Containers stored outside building, limited access	East of Ho Sheung Heung Road	DD95 - 759C, 761D, 762D	C
28c	Container Yard/terminal (paved)	small scale vehicle maintenance, washing facilities,	East of Ho Sheung Heung Road	DD95 - 759RP, 759A, 759C, 761A, 761C, 762A, 762C	C

Site No.	Current Land Use (Based on June and July 2000 Site Appraisal)	Potential Contaminating Land Use/ Evidence of Contamination	Map Location	Lot No.	Preliminary Potential Contamination Rating*
29	Vehicle repair and maintenance (partially paved)	heavy staining, vehicle parts, fuel drums, scrap metal, general waste	West of Ho Sheung Heung Road	DD95 - 772, 774, 776	A
30	Vehicle repair and dumping area (unpaved)	heavy staining, vehicle parts, scrap metal, general waste	West of Ho Sheung Heung Road	DD95 - 786, 791, 792	A
30a	Container parking (unpaved)	vehicle parked on site, no access	West of Ho Sheung Heung Road	DD95 - 783, 784, 786, 788	C
30b	International Wood Industry (paved)	storage of timber products	West of Ho Sheung Heung Road	DD95 - 786, 791, 792	C
31	construction materials (partially paved)	construction equipment, no access	North of Po Lau Road	DD95 - 361, 372, 373	C
31a	Vehicle repair and maintenance (partially paved) small scale, on inspection pit	vehicle parts, staining, scrap metal	North of Po Lau Road	DD95 - 361, 372, 373	A
31b	Vehicle repair and maintenance (paved) limited access	stacked vehicles, vehicle parts, heavy staining, scrap metal, fuel drums	North of Po Lau Road	DD95 - 361, 372, 373	A
32	Vehicle repair and maintenance (unpaved) small scale, limited access	stacked vehicles, vehicle parts, staining,	East of Po Lau Road	DD95 - STT510	A
33	Pyrok Factory (ceramic epoxy), mixing cement, paint (paved)	dust, discarded materials, effluent discharge into surface water course.	East of Ho Sheung Heung Road	DD95 - 211A.RP, 212A, 212RP, 213	B
33a	Chung Hing Metal Co. (Lexicon), metal workshop and warehouse (paved)	staining, fuel drums	West of Ho Sheung Heung Road	DD95 - 210A, 208B, 207, STT672	B
34	Tsuen Kee Transportation Company, container and minor vehicle repair (unpaved) limited access.	Staining, container vehicle storage,	East of Ho Sheung Heung Road	DD95 - 231B.RP, 223, 224, 225, 220	C
34a	Wah Yan Hong Chemical Factory (1974), swirl-wind pesticides (paved)	chemical storage at back of building	West of Ho Sheung Heung Road	DD95 - 234A1, 235A1, 236A.RP, 222A.RP	B
34b	Warehouse	no access to site or warehouse possible	East of Ho Sheung Heung Road	DD95 - 222A.RP, 234A.RP	C
35	Shun Shing Construction and Engineering Co.Ltd. (unpaved) (Tel: 2770 8108) limited access	Construction materials, equipment maintenance activities and parts, bricks, pallets, drums,	West of Ho Sheung Heung Road	DD95 - N8733	C
35a	Vehicle repair and maintenance (unpaved)	heavy staining of soil, vehicle parts	North of Ma Tso Lung Road	DD95 - N8733	A
35b	Chung Hing Vehicle Repair (Tel: 2477-9302) (partially paved)	staining, car dump, vehicle parts	North of Ma Tso Lung Road	DD95 - 247	A
35c	Wo Fat Vehicle Repair (unpaved)	heavy staining of soil, car dump, scrap metal, vehicle parts	West of Ho Sheung Heung Road	No record	A
36	Hung Kee, vehicle repair and maintenance (Tel: 2668-8089) (partially paved)	heavy staining of soil, car dump, scrap metal, vehicle parts, fuel drums and tanks (10+)	Ho Sheung Heung Pai Fung Road	DD95 - 21, 23, 24, 25	A

Site No.	Current Land Use (Based on June and July 2000 Site Appraisal)	Potential Contaminating Land Use/ Evidence of Contamination	Map Location	Lot No.	Preliminary Potential Contamination Rating*
36a	Hon Fai Company, Construction materials, warehouse (large site, no access) (paved)	scrap metal, above ground fuel storage tanks(10+) and drums, maintenance activities, storage of wood	East of Ho Sheung Heung Road	DD95 - 21, 23, 24, 25	B
36b	Vacant warehouses and timber storage (paved)	storage of wood	West of Ho Sheung Heung Pai Fung Road	DD95 - 21, 23, 24, 25	C
37	Industrial Estate (several large warehouses, a number vacant), Sui Tai Construction Materials, Hon Choi, Hing Wai Oi Li and Wai Nang Warehouses (paved) Vacant (tarmac base)	paper, plywood, tiles, chemical storage, and construction materials (gi-boring rigs) and fuel drums.	West of Ho Sheung Heung Pai Fung Road	DD95 - 16, 19	B
38	Vacant (tarmac base)	-	West of Ho Sheung Heung Road	DD95 - 129, 163, 124, 126, 123, 122, 127, 133, 132, 134, 136, 114, 116, 115, 136, 137, 106, 109	-
39	Yau Fuk Food Factory (vacant) (paved)	-	West of Ho Sheung Heung Road	DD95 - 95A.RP	C
40	Scrap Metal (paved)	scrap metal	West of Ho Sheung Heung Road	DD95 - 96A, 97A, 98, 111RP, 112, 120, 110, 108	A
41	Union Concrete Products (HK)Ltd and Unstress Concrete Products (HK) Ltd. (paved)	repair workshop, concrete manufacture, aggregate (gravel), construction materials construction materials	West of Ho Sheung Heung Road	DD95 - 6, 7, 8, 9	B
42	Combined with 41	construction materials	West of Ho Sheung Heung Road	DD95 - 14, 104	C
43	Open Storage (paved)	construction materials, water heaters	North of Ho Sheung Heung Village	No Record	A
44	Open Storage (unpaved)	construction materials, fuel tanks(50+),	North of Ho Sheung Heung Village	DD95 - 1414, 1415, 1425, 1383	A
45	Open Storage (unpaved)	uncontrolled dumping (bamboo scaffolding, rubber matting, containers general construction materials)	North of Ho Sheung Heung Village	DD95 - 1381, 1383	C
46	Open Storage (unpaved)	uncontrolled dumping (containers, cages, household waste)	North of Ho Sheung Heung Village	DD95 - 1381	C
47	Open Storage (unpaved)	uncontrolled dumping (containers, household waste)	North of Ho Sheung Heung Village	DD95 - 1387A-C (partially missing)	C
48	Private Garden	-	-	DD95 - 1490, 1491, 1492, 1495	-
49	Site cleared for main drainage works	-	-	No record	-
50	Cheong Shing, Open Storage (paved)	storage of construction materials, wood	North of Ho Sheung Heung Road	No record	C
51	Lek Heng, vehicle repair and maintenance (paved)	scrap metal, vehicles (excavators), construction materials	To the south of the Lo Wu Shooting Range	DD95 - 4, 5	A

Site No.	Current Land Use (Based on June and July 2000 Site Appraisal)	Potential Contaminating Land Use/ Evidence of Contamination	Map Location	Lot No.	Preliminary Potential Contamination Rating*
52	Open storage (unpaved)	Construction materials, vehicles, fuel drums, machinery parts A container	To the south of the Lo Wu Shooting Range	DD95 - STT1227	B
53	Vacant (unpaved)		To the south of the Lo Wu Shooting Range	DD96 - 839	C
54	Metal Workshop (paved)	Machinery workshop, scrap metal	To the south of the Lo Wu Shooting Range	DD96 - 839	B
55	Storage (unpaved)	containers and drums (unknown)	To the south of the Lo Wu Shooting Range	DD96 - STT1430	C
56	Storage (paved) (inaccessible)	Construction materials	To the south of the Lo Wu Shooting Range	DD96 - 834	C
57	Vacant (grassland)	-	Next to the Lo Wu Shooting Range	No Record	-
58a	Storage (unpaved)	Construction materials	Next to the Lo Wu Shooting Range	No Record	C
58b	Car dump (inaccessible)	Scrap cars, vehicle parts	Next to the Lo Wu Shooting Range	No Record	A
59a	Storage (unpaved)	Container, debris, wood piece	To the north of the Lo Wu Shooting Range	No Record	C
59b	Storage (unpaved)	Construction materials and plant	To the north of the Lo Wu Shooting Range	No Record	C
60a	Storage (paved)	Containers	To the west of the Lo Wu Shooting Range	No Record	C
60b	Storage (paved)	Construction materials and general goods	To the west of the Lo Wu Shooting Range	No Record	C
61	No access to Site	site use not determined by aerial photos	-	DD95 - STT729	-
62	Hon Wah Yuen, scrap yard (unpaved)	scrap materials (metal, vehicles, wood)	North of Ma Tau Lung Road	DD95 - 321RP, 1917, 1921RP	A/B
63	No access to Site	site use not determined by aerial photos	-	No Record	-
64	Vacant	-	North of Ma Tau Lung Road	DD95 - 321, 323, 1917, 1921	C
64a	Hung Tat, Construction site offices (partially paved)	lubrication oil, fuel drums, burn pit, electric generators, staining of soil	North of Ma Tau Lung Road	DD95 - 325RP	B
64b	Tong Luen Engineering (paved) small scale	metal workshop, scrap metal	North of Ma Tau Lung Road	DD95 - 325RP	B
65	Open Storage (unpaved)	scrap metal, concrete pipes and tiles	East of Ma Tau Lung Road	No Record	C
66	Home repair workshop (TV, air-conditioners), (paved) small scale (Tel: 2476-3419)	fuel storage and refuelling, burn pit, staining around fuel drums	East of Ma Tau Lung Road	DD95 - Y1489	B
66a	Union (Len Hop) (Tel: 248-8307) timber yard (unpaved)	staining, wood storage and vehicle repair	East of Ma Tau Lung Road	DD95 - Y21982	C
67	Home vehicle repair (paved) small scale	staining, car dump, fuel storage, maintenance bay	East of Ma Tau Lung Road	No Record	B

Site No.	Current Land Use (Based on June and July 2000 Site Appraisal)	Potential Contaminating Land Use/ Evidence of Contamination	Map Location	Lot No.	Preliminary Potential Contamination Rating*
67a	Warehouse (floor tiles) (paved)	no access	East of Ma Tau Lung Road	DD95 - P1850	-
68	Combined with 66a (same owner)	-	-	No Record	C
69	Cheung Kee Metal Workshop (partially paved)	scrap metal, machinery and vehicle parts, and staining of concrete	East of Ma Tau Lung Road	DD95 - 328RP	B
70	Law Scrap Metal Workshop (M: 9342-7781) (unpaved)	scrap metal furniture, kitchen ware, freezers, fridges	East of Ma Tau Lung Road	DD95 - T6673	C
71	Container Storage and uncontrolled dumping (unpaved)	uncontrolled dumping, burn pit, vehicle parts.	East of Ma Tau Lung Road	No Record	B
72	Village House	-	-	DD95 - 331, 334	-
73	Open Storage (Vacant)(paved)	uncontrolled dumping, old vehicles, containers, fuel drums	East of Ma Tau Lung Road	DD95 - 331	B
74	Far East Storage Company, Open Storage (partially paved) (access limited)	Electricity cables	East of Ma Tau Lung Road	DD95 - 334B-F	C
74a	Construction materials and equipment (unpaved)	staining of soil, air compressors, fuel drums, scrap construction equipment, containers, old vehicles	East of Ma Tau Lung Road	DD95 - 331	A
74b	Ka Cheung Maintenance Yard (unpaved)	staining, fuel storage, excavator maintenance(x2)	East of Ma Tau Lung Road	DD95 - 335J	A
74c	Shing Wa Margarine / oil Factory (no access) (paved)	old empty marg. containers (x40), run-off from site black, oily and pungent	East of Ma Tau Lung Road	DD95 - 335E	C
74d	Hong To Pig Farm, with vehicle repair and maintenance activities (partially paved)	fuel oil storage, effluent run-off, furnace on site	East of Ma Tau Lung Road, behind 74c & 74e.	DD95 - 285, 286, 287, 288	B
74e	Vehicle repair and maintenance yard (paved)	oily residue in surface water, some staining of concrete	East of Ma Tau Lung Road, behind 74c	DD95 - 335D	B
74f	Workshop and maintenance area, (forms part of the margarine factory at 74c) (paved) (no access)	Diesel drums (x6), Dowanol*EB (marked as dangerous to health), 1 aboveground storage tank	East of Ma Tau Lung Road, behind 74c	DD95 - 335A-C	B
75	Fai Kee, Timber storage (paved)	wood storage	East of Ma Tau Lung Road	DD95 - 331	C
75a	Hong Kee Transportation Company, maintenance activities (paved)	scrap metal, staining, workshop activities	East of Ma Tau Lung Road	DD95 - 331	B
76	Saw Mills (approx. 9 separate units within complex) (partially paved) timber	timber cutting, fuel storage, lubrication oil (wood preservation activities was not observed)	West of Ma Tau Lung Road	DD-96 - 2240 (J, I), J2, J3, J4, E,RP, K1, K2, K3, K4, K5,E1, E2, E3, E4, F1, L1, L2, G1, M, RP, N, H1, H2, H3, C (D,1,RP), (D,1,C), (D,1,D), (D,1,B), (D,1,A), D2, D3, (A,1,A), (A,1,B,1), (A,1,B,RP), (A,1,RP), B, (A,6), (A,5), (A,4), (A,3), (A,2), (A, RP)	B

Site No.	Current Land Use (Based on June and July 2000 Site Appraisal)	Potential Contaminating Land Use/ Evidence of Contamination	Map Location	Lot No.	Preliminary Potential Contamination Rating*
77	Open storage and uncontrolled dumping (area behind saw mills) (unpaved)	raw/waste timber, vehicles, old lifting equipment	Behind saw mills (No.76)	DD96 - 733, 734	B
78	Container trailer park (paved)	vehicles parking on site	Behind saw mills (No.76)	DD96 - 731B	C
79	Open storage and uncontrolled dumping (unpaved)	wood materials, vehicles, cutting equipment, construction materials, containers	Behind saw mills (No.76)	No Record	C
80	Combined with 79	-	-	No Record	C
81	Po Wing Shun Yuen Construction Co. Ltd, vehicle repair and maintenance, (no access) (partially paved)	car dump, scrap vehicle parts, staining, construction materials	East of Ma Tau Lung Road	No Record	A
82	Open storage (vacant) (partially paved)	-	North of Caste Peak Rd	DD95 - 1941	C
83	Combined with 82	-	-	DD95 - 1941, 391B, 2054	C
84	Trailer park, repair and maintenance activities (paved)	heavy staining, tiers, fuel drums, containers, oil	North of Caste Peak Rd	DD95 - 1941(RP)	A
85	Pig Farm	effluent discharge into the local water course	Pak Shek Au Village	DD96 - 685-689, 690-692, 696, 697	C
86	Vehicle repair and maintenance (small scale) (paved)	vehicle parts, equipment	Pak Shek Au Village	DD98 - 671	B
87	No access	-	-	DD96S1 - 642A, 642B	-
87a	Vehicle repair and maintenance(unpaved)	staining, excavator parts, fuel, mini-excavator storage (x5), vehicles parked on site	Pak Shek Au Village	DD915-1	B
88	Trailer park	-	Behind Pak Shek Au Village	No Record	C
88a	Combined with site no. 88	-	-	No Record	C
89	Vehicle repair and maintenance(small scale)(paved)	staining of concrete, fuel drums and scrap metal/vehicle parts, tires	Behind Pak Shek Au Village	No Record	B
90	Government Land (vacant)	-	Behind Pak Shek Au Village	No Record	C
91	Old Quarry	-	Behind Pak Shek Au Village	No Record	C
92	Shan Fuk Kong Construction Materials	construction materials, discarded equipment, staining, uncontrolled dumping	Next to Ho Sheung Heung Village	DD95 - 1046RP, 1036RP, 1037RP, 1027, 1028	B
92a	Hong Tao Bean Product Factory (Soya bean manufacture)	dumping of empty containers, and raw materials. Effluent run-off from factory also observed. Above Ground Storage Tank.	Next to Ho Sheung Heung Village	DD95 - 1049	C
93	Great Wall Co Ltd/vehicle repair yard (partially paved)	Small vehicle repair yard, with Aboveground Storage Tank observed.	Along Kam Hang Road	DD98 - 666RP	B
94	Hoi Kong Car Repair Workshop (not paved)	Small vehicle repair yard, with office building and general storage of goods on site.	Along Kam Hang Road	DD98 - 663RP, 661	B

Site No.	Current Land Use (Based on June and July 2000 Site Appraisal)	Potential Contaminating Land Use/ Evidence of Contamination	Map Location	Lot No.	Preliminary Potential Contamination Rating*
95	Yiu Kee Car Repair Workshop (not paved)	Small vehicle repair yard	Along Kam Hang Road	DD95 - 1990B	B
96	Recently cleared site, used as a car park	-	Along Kam Hang Road	DD95 - 1984RP	C
97	Metal workshop and car repair yard	Fuel drums and scrap metal stored on site. A covered vehicle maintenance area was also observed.	Along Kam Hang Road	DD95 - 685D	B
98	Jit Cheung Construction Co./ Construction site office	no access to site	Along Kam Hang Road	No Record	-
99	Open Storage	Wooden Pallets and discarded construction waste	Along Kam Hang Road	DD95 - 104RP	C
100	Yip Lee Metal Engineering/ vehicle repair workshop	Vehicle maintenance activities, fuel tanker on site, metal cutting activities	Along Kam Hang Road	DD95 - 998RP	B

*Note: The rating for each of the sites has been determined on VISUAL evidence only, and thus comprises only a preliminary qualitative evaluation of the potential contamination of the site. The EPD Guidance Notes for Investigation and Remediation of Contaminated Sites of Petrol Filling Stations, Boatyards and Car Repair/Dismantling Workshops (EPD/TR1/99) has been used as the basis to determining those activities which pose the highest potential for contamination.

A - High, B - Medium, C - Low potential contamination

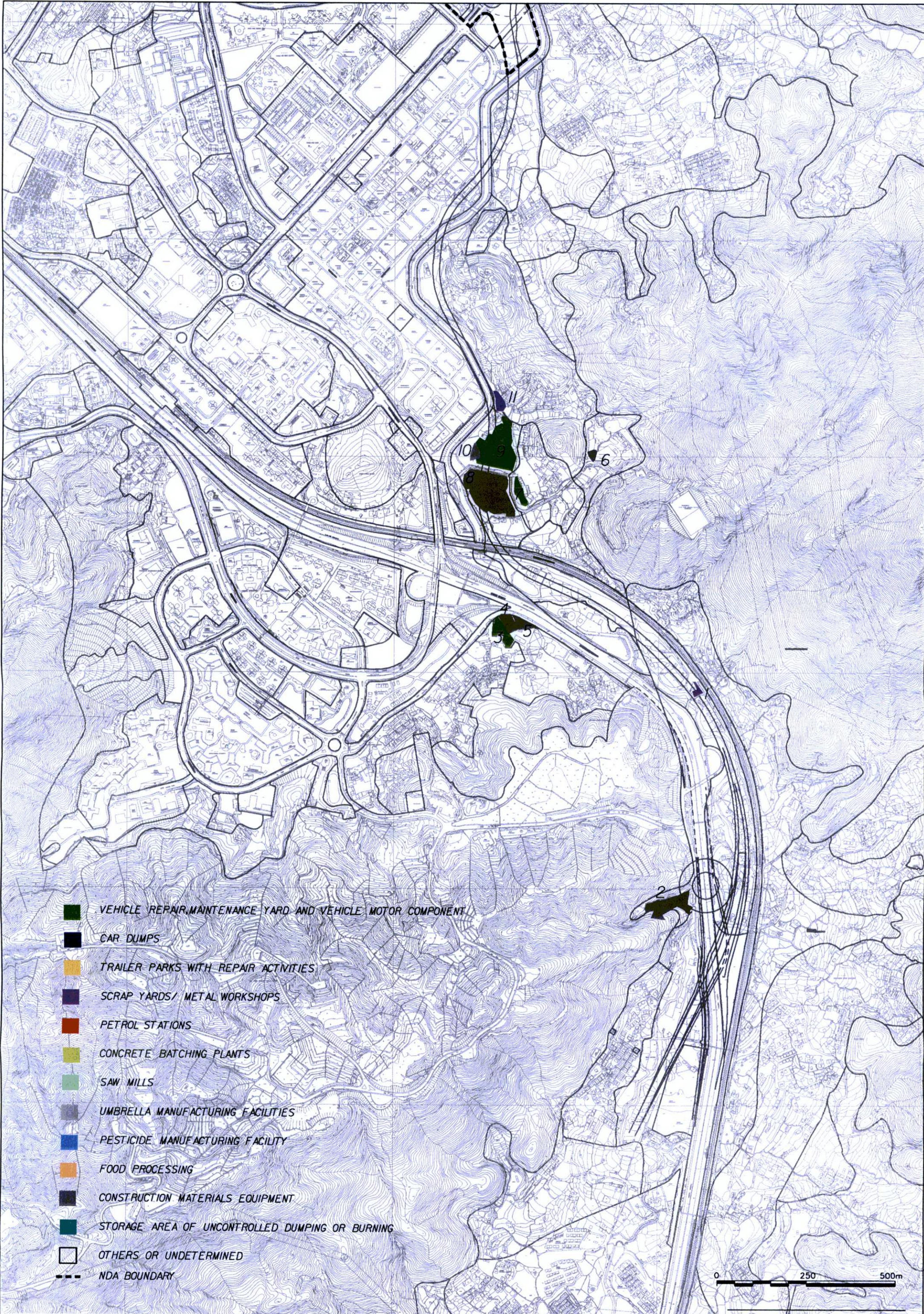
Table A2 Potentially Contaminated Sites at Fanling North/Sheung Shui SGA

Site No.	Current Land Use (Based on June and July 2000 Site Appraisal)	Potential Contaminating land Use/ Evidence of Contamination	Map Location	Lot No.	Preliminary Potential Contamination Rating*
1	Vacant	Discarded materials	Sha Tau Kok Road - Lung Yuek Tau	DD83S1 - 1434B,RP	C
2	Vacant	Discarded materials	Sha Tau Kok Road - Lung Yuek Tau	DD83S1 - 1434B,RP	C
3	Vacant	-	Sha Tau Kok Road - Lung Yuek Tau	DD83S1 - 1434B,RP	C
4	Vacant (partially paved)	-	Sha Tau Kok Road - Lung Yuek Tau	DD83S1 - 1406B,RP, 1407A,RP, 1407RP	C
5	Storage (partially paved)	Container, debris, scrap metal	Sha Tau Kok Road - Lung Yuek Tau	DD83S1 - 1347A	C
6	Vacant (unpaved)	Tires	Ma Sik Road	DD51S1 - 182	C
7	Construction Site	-	To the east of Woodland Crest	DD51 - 522, 521RP, 523RP	C
8	Construction Site	-	To the east of Woodland Crest	DD51 - 518RP	C
9	Vacant	Small garage	-	DD51 - 86	C
9a	Luen Fat, car repairing/maintenance (paved)	Staining of soil surface, containers, tires, scrap metal	To the east of Woodland Crest	DD51 - STT435	A
9b	Storage (unpaved)	Bags containing "Powder" like materials	To the east of Woodland Crest	DD51S1 - STT433	C
10	Kee Cheong, car repairing/maintenance (paved)	Scrap cars, tires	To the east of Woodland Crest	DD51S1 - 304, 303RP, 804RP	A
11	Hing Yau Hon, container Yard (partially paved) => 12	Debris and containers	Man Kam To Road	DD52 - 462, 463, 464A,RP, 482RP, 482A, 486A,RP, 465RP, 476RP, 405RP	A
12	Hing Yau Hon, container Yard (partially paved) => 11	Debris and containers	Man Kam To Road	DD52 - 462, 463, 464A,RP, 482RP, 482A, 486A,RP, 465RP, 476RP, 405RP	A
13	Ming Kee, car repairing/maintenance (partially paved)	Heavy staining, scrap metal and tires	Man Kam To Road	DD52 - 462, 463, 464A,RP, 482RP, 482A, 486A,RP, 465RP, 476RP, 405RP	A
14	Car repairing/maintenance (partially paved)	Heavy staining, petrol containers, car battery, wheels and tires	Next to Po Wan Road, Sheung Shui	DD52 - 704RP	A
14a	Vacant (unpaved)	Tires and debris	Next to Po Wan Road, Sheung Shui	DD52 - 704RP	C

Site No.	Current Land Use(Based on June and July 2000 Site Appraisal)	Potential Contaminating land Use/ Evidence of Contamination	Map Location	Lot No.	Preliminary Potential Contamination Rating*
15	Shun Yu, car repairing/maintenance (partially paved)	A few petrol containers, Heavy staining, scrap car parts and debris oily staining	Next to Po Wan Road, Sheung Shui	DD52 - 705RP	A
16	Tin Yin, car parking lot (partially paved)	Container trucks	Next to Po Wan Road, Sheung Shui	DD52 - 705RP	A
17	Man Kee Transportation, car parking lot (unpaved)	heavy oily staining, tires, debris, car battery , petrol container and scrap metal	Man Kam To Road	DD52 - 519, 520, 521, 522, 535RP	C
17a	Elephant, car repairing/maintenance (partially paved)	Debris, tires, scrap metal and container trucks	Man Kam To Road	DD52 - 517	A
17b	Hung Kin, container yard (partially paved)	Scrap metal and tires	Man Kam To Road	DD52 - 477, 483	B
18	Yiu Wah, car repairing/maintenance (partially paved)	Scrap metal and tires	Man Kam To Road	DD52 - 479, 481, 433, 422, 430, 432	B
18a	Choi Kee, car repairing/maintenance (partially paved)	Container trucks	Man Kam To Road	DD52 - 468	C
19	Car parking lot (unpaved)	Container trucks	Man Kam To Road	DD52 - 467, 405A	B
20	Car parking lot (unpaved)	Trucks	-	DD52 - 405A, 480, 481	C
21	Not identified (no access)	Heavy Staining, tires	Man Kam To Road	DD52 - 426, 427	B
22	Ming Kee, Car parking lot (partially paved)	Heavy Staining, tires	Man Kam To Road	DD52 - 421, 431	A
23	Hang Fung, car repairing/maintenance (partially paved)	Heavy staining, tires	Man Kam To Road	DD52 - 424, 425	A
23a	Tat Wo, car repairing/maintenance (partially paved)	Container trucks, scrap metal, petrol containers and tires	To the east of Man Kam To Road	No Lot Number in the Figures (WIP)	A
24	Scrap yard (unpaved)	Construction materials, carpark	To the east of Man Kam To Road	No Lot Number in the Figures (WIP)	C
25	Guangzhou, construction site (paved) =>26	Construction materials carpark	To the east of Man Kam To Road	No Lot Number in the Figures	C
26	Construction site (paved) =>25	Container, construction materials	To the east of Man Kam To Road	DD52 - 154B,RP, 152, 153RP, 151, 161	C
27a	Kim Yep, storage (unpaved)	Construction plant, petrol container, oily staining of soil surface	To the east of Man Kam To Road	DD52 - 154B,RP, 152, 153RP, 151, 161	B
27b	CLF, storage (unpaved)	Trucks	To the east of Man Kam To Road	DD52 - 154B,RP, 152, 153RP, 151, 161	A
28	Kit Wing car repairing/maintenance (paved)	Trucks	To the east of Man Kam To Road	DD52 - 164, 176RP, 167RP	B
29a	Yo Wo, car parking lot (paved)	Petrol container, oily staining of soil surface	To the east of Man Kam To Road	DD52 - 164, 176RP, 167RP	B
29b	Ho Wah, car repairing/maintenance (paved)				

Site No.	Current Land Use (Based on June and July 2000 Site Appraisal)	Potential Contaminating land Use/ Evidence of Contamination	Map Location	Lot No.	Preliminary Potential Contamination Rating*
30	Yhet Hing, car repairing/maintenance (partially paved)	Heavy staining, trucks, scrap metal	To the east of Man Kam To Road	DD52 - 104RP, 104A	A
31	Tat On, container Storage	Containers, scrap metal, tires, trucks	Fu Tei Au Road	DD88 - 45B, 46B	B
32	Vacant	-	Chuk Wan Street	DD51S1 - 229	C
33	Lung Wai, car repairing/maintenance (partially paved)	Scrap metal, tires, containers	To the east of Woodland Crest	DD51S1 - 800, 801, 802	A
34	Fu Wah, car repairing/maintenance (partially paved)	Tires, car battery	Man Kam To Road	DD52 - 102A, 102S4	A
35	Kai Wan, car repairing/maintenance (unpaved)	Scrap metal, oily staining of soil surface, petrol container, tires	Man Kam To Road	DD88 - 130ARP	A
36	Not Identified.	-	-	No record	C
37	Tsuen Kee, storage of construction materials (partially paved)	Construction materials	Man Kam To Road	DD52 - 421	C
38	Man Luen, car repairing/maintenance (paved)	Tires, wheel washing area for the trucks	Man Kam To Road	No Record	B
38a	Wing Shing, car repairing/maintenance (unpaved)	Heavy staining, vehicle parts, fuel	Man Kam To Road	527RP, 514, 515, 528A, RP	B
39	Vacant (partially paved)	Staining, scrap parts,	Sha Tau Kok Road - Lung Yeuk Tau	DD83S1 - 1400A, RP, 1400RP, 1393RP	C
40	Construction Site	-	To the east of Woodland Crest	DD51 - 522, 524RP	C

*Note: The rating for each of the sites has been determined on VISUAL evidence only, and thus comprises only a preliminary qualitative evaluation of the potential contamination of the site. The EPD Guidance Notes for Investigation and Remediation of Contaminated Sites of Petrol Filling Stations, Boatyards and Car Repair/Dismantling Workshops (EPD/TR1/99) has been used as the basis to determining those activities which pose the highest potential for contamination.
A - High, B - Medium, C - Low Potential Contamination



- VEHICLE REPAIR, MAINTENANCE YARD AND VEHICLE MOTOR COMPONENT
- CAR DUMPS
- TRAILER PARKS WITH REPAIR ACTIVITIES
- SCRAP YARDS/ METAL WORKSHOPS
- PETROL STATIONS
- CONCRETE BATCHING PLANTS
- SAW MILLS
- UMBRELLA MANUFACTURING FACILITIES
- PESTICIDE MANUFACTURING FACILITY
- FOOD PROCESSING
- CONSTRUCTION MATERIALS EQUIPMENT
- STORAGE AREA OF UNCONTROLLED DUMPING OR BURNING
- OTHERS OR UNDETERMINED
- NDA BOUNDARY



Table A4 Potentially Contaminated Sites at Southern Bypass/Southern Connection NDA

Site No.	Current Land use (Based on June and July 2000 Site Appraisal)	Potential Contaminating land Use/ Evidence of Contamination	Map Location	Lot No.	Preliminary Potential Contamination Rating*
1	Metal storage and scrap yard	Metal storage and recycling, some fuel stored on site, reconditioning of air conditioners, fridges	Southern Bypass/Southern section	No Record	B
2	Bricking manufacturing (previous name "Spanish wine factory)	Sand, gravel, clay storage	Southern Bypass/Southern section	No Record	-
3	Motor Services (Venton MFG. Co. Ltd)	No access, paved, 6 drums	No.1 Wo Hing Rd, Southern Bypass/Southern section,	No Record	B
4	Tak Lee Engineering	Partially paved, construction machinery, repair and storage	Southern Bypass/Southern section, opposite no.4	No Record	B
5	K. Kee Engineering	Partially paved, construction machinery, repair and storage,	Southern Bypass/Southern section,	No Record	B
6	Open storage	metal sheets, evidence of spillage construction waste, wood boards, tiles, four drums, unpaved	Southern Bypass/Southern section, adjacent to site no.5 near Tong Hang Village	No Record	-
7	Ling Fung Transportation Company	Vehicle repair and maintenance, paved	Southern Bypass/Southern section, near Tong Hang Village	No Record	B
8	Open Storage , vacant	vacant	Southern Bypass/Southern section, near Tong Hang Village	No Record	-
9	Hong Kong China Travel and Transportation Company Ltd	Vehicle repair and maintenance, scrap metal, uncontrolled dumping (tires, metal sheets), partially paved	Southern Bypass/Southern section, Tong Hang Village	No Record	C
10	Workshop	computer equipment,	Southern Bypass/Southern section, Tong Hang Village	No Record	-
11	Metal scrap workshop, small scale	metal cutting and storage	Southern Bypass/Southern section, adjacent to Ma Wat River	No Record	C

*Note: The rating for each of the sites has been determined on VISUAL evidence only, and thus comprises only a preliminary qualitative evaluation of the potential contamination of the site. The EPD Guidance Notes for Investigation and Remediation of Contaminated Sites of Petrol Filling Stations, Boatyards and Car Repair/Dismantling Workshops (EPD/TR1/99) has been used as the basis to determining those activities which pose the highest potential for contamination.
A - High, B - Medium, C - Low Potential Contamination