

Legend

- Study Area
- GI Locations

Projected Arsenic Concentration (mg/kg)

- 600+
- 500 - 600
- 400 - 500
- 300 - 400
- 200 - 300
- 100 - 200
- 0 - 100

NOTE: Due to the contouring methods used, the actual value of the datapoints may not be represented by the contours. To compensate a colored point with a radius of 50m has been manually placed under each datapoint to represent its actual value and potential spatial extent.



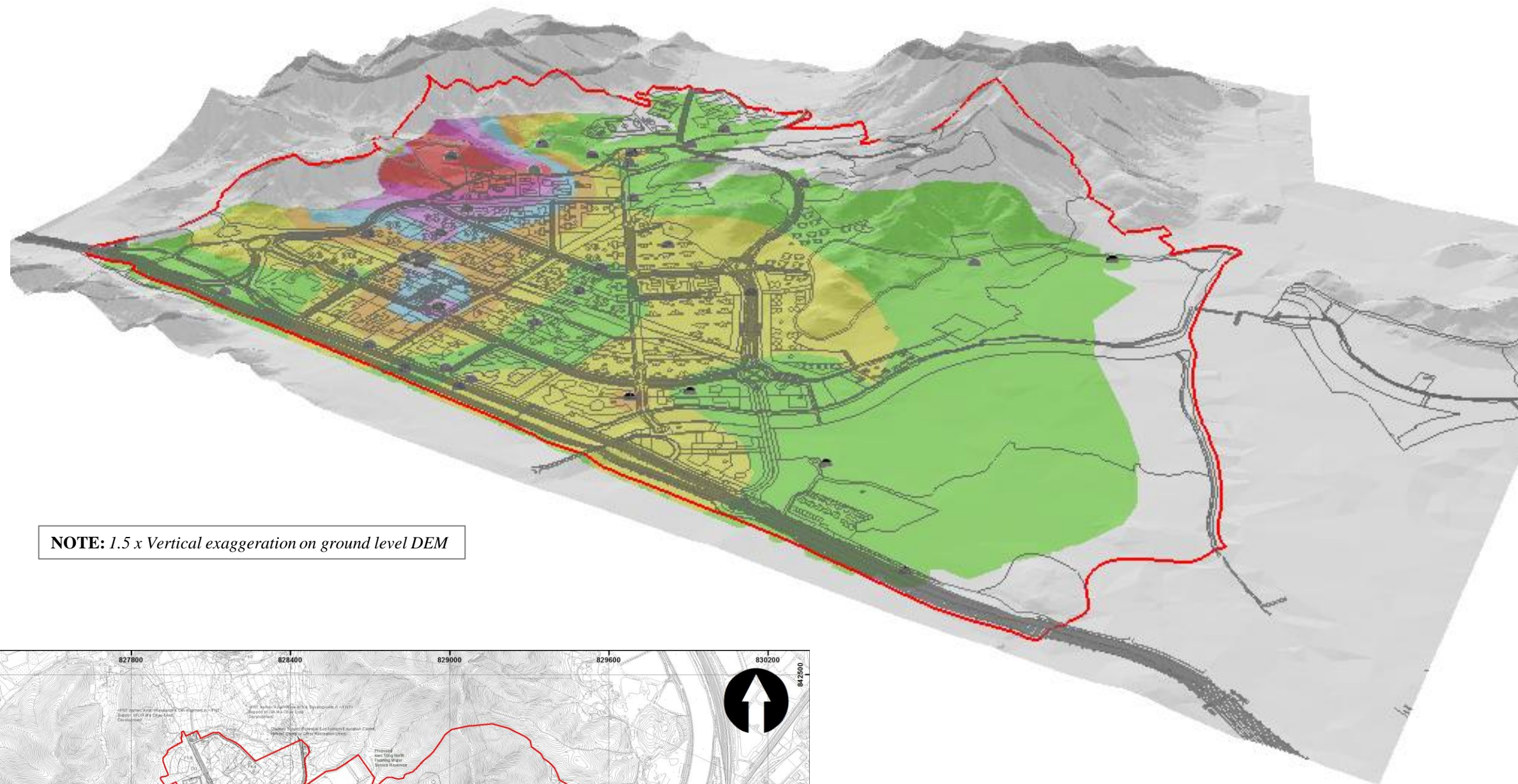
Job Title

**North East New Territories
New Development Areas
Planning and Engineering
Study - Investigation**

Job Number: 25278

Contour Plan to show
Projected Maximum
Arsenic Concentration
Distribution at 2m below
Proposed Formation Level

Scale:	1:10,000
Date:	March 2012
Figure No.:	12A
Drawn RHL	Checked SWM
	Approved



Legend

- Study Area
- GI Locations
- Approximate area requiring treatment*

Projected Arsenic Concentration (mg/kg)

- 600+
- 500 - 600
- 400 - 500
- 300 - 400
- 200 - 300
- 100 - 200
- 0 - 100

NOTE: Due to the contouring methods used, the actual value of the datapoints may not be represented by the contours. To compensate a colored point with a radius of 50m has been manually placed under each datapoint to represent its actual value and potential spatial extent.

ARUP

www.arup.com

Job Title

**North East New Territories
New Development Areas
Planning and Engineering
Study - Investigation**

Job Number: 25278

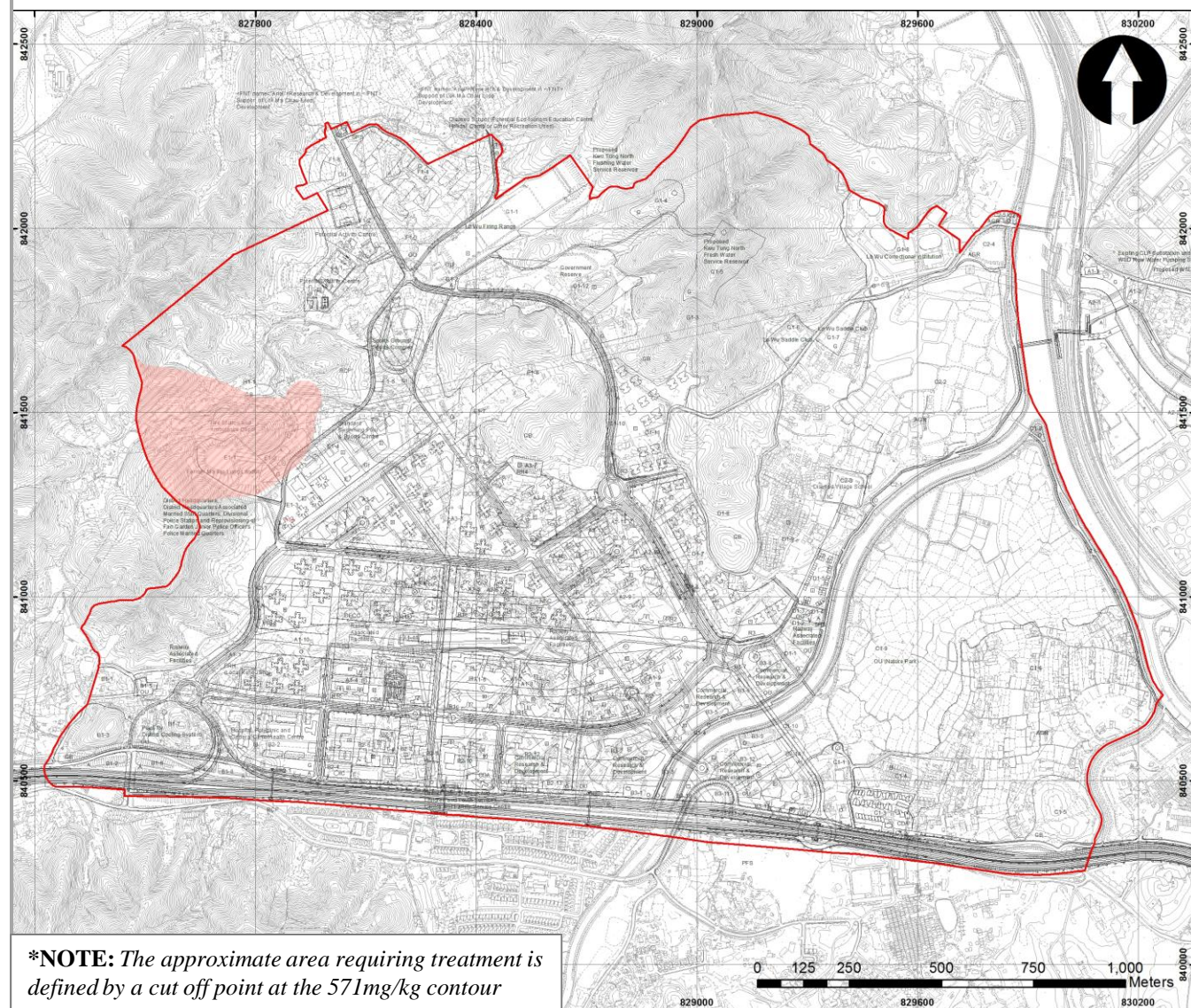
Contour Plan to show
Projected Maximum
Arsenic Concentration
Distribution at 2m below
Proposed Formation Level

Scale: 1:10,000

Date: March 2012

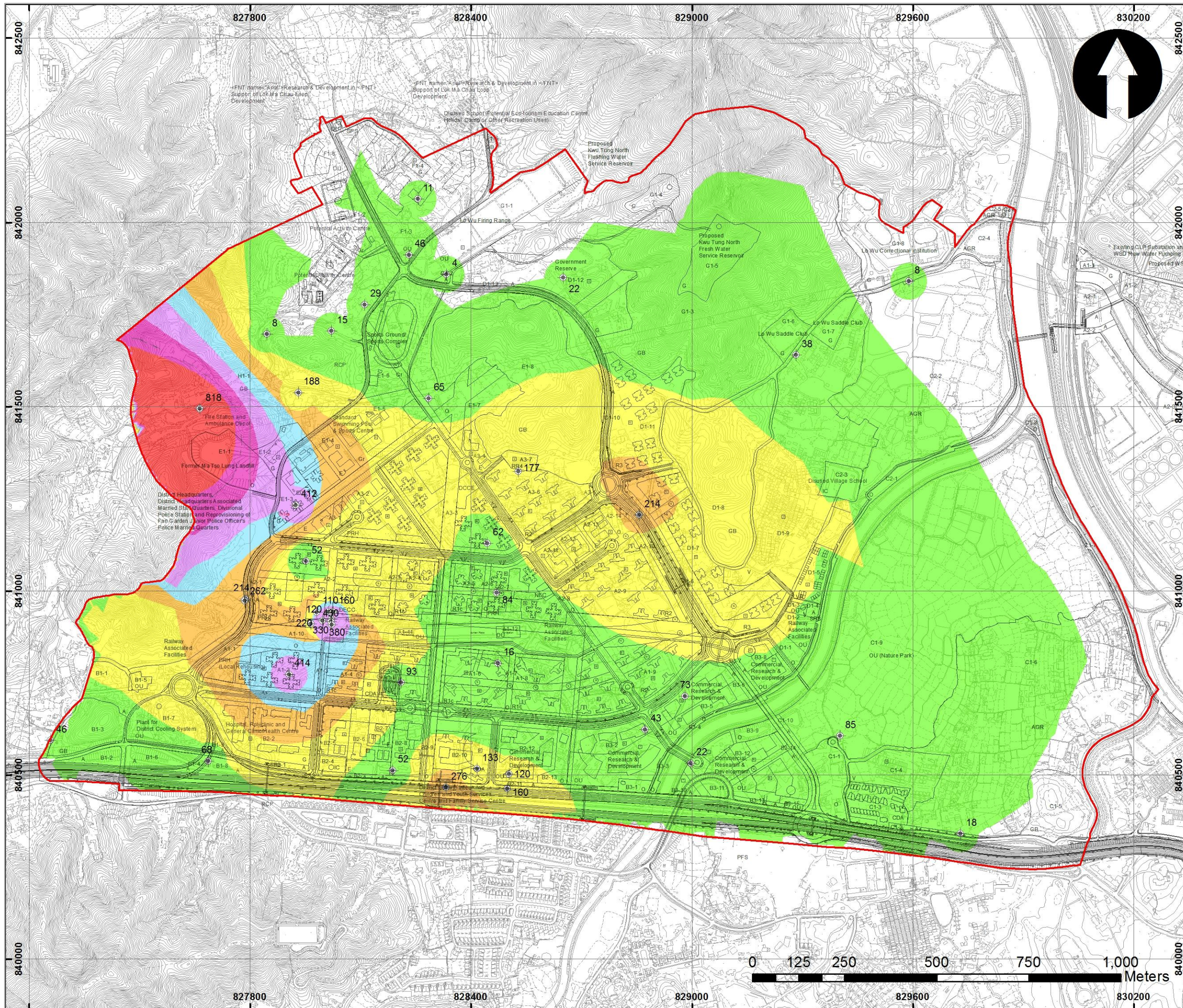
Figure No.: 12B

Drawn RHL Checked SWM Approved



Sample ID	Arsenic Concentration (kg/mg)
KTN-23b-1 (1.5)	160
KTN-23b-2 (1.0)	120
KTN-77.78-1 (1.0)	130
KTN-77.78-2 (0.9)	220
KTN-77.78-4 (1.0)	110
KTN-77.78-5 (1.0)	160
KTN-77.78-6 (1.0)	330
KTN-77.78-7 (1.0)	380
KTN-77.78-8 (1.0)	430
KTN-BH11 (3.0)	818
KTN-BH12 (1.5)	42
KTN-BH13 (1.0)	128
KTN-BH14 (1.0)	33
KTN-BH15 (0.5)	676
KTN-BH16 (0.5)	14
KTN-BH17 (3.05)	46
KTN-BH18 (1.0)	66
KTN-BH19 (1.0)	8
KTN-BH20 (3.15)	22
KTN-BH21 (1.6)	81
KTN-BH22 (1.5)	30

Sample ID	Arsenic Concentration (kg/mg)
KTN-BH23 (1.0)	20
KTN-BH24 (1.5)	17
KTN-BH25 (1.5)	40
KTN-BH28 (1.0)	85
KTN-ASBH01a (5.5-5.95)	97
KTN-ASBH04 (5.5-5.95)	46
KTN-ASBH06 (5.5-5.95)	16
KTN-ASBH07 (1.0)	84
KTN-ASBH08 (0.5)	62
KTN-ASBH09 (3.0-3.45)	442
KTN-ASBH12 (3.0-3.45)	432
KTN-ASBH13 (1.5)	177
KTN-ASBH14a (1.0)	191
KTN-ASBH14b (0.5)	417
KTN-ASBH15 (0.5)	31
KTN-ASBH20 (0.5)	219
KTN-ASBH21 (1.5)	73
KTN-ASBH29 (1.5)	155
KTN-ASBH32 (1.5)	65
KTN-ASBH Offsite (1.5)	214
KTN-ASBH Offsite (a) (1.5)	262



Legend

- Study Area
- GI Locations

Projected Arsenic Concentration (mg/kg)

- 600+
- 500 - 600
- 400 - 500
- 300 - 400
- 200 - 300
- 100 - 200
- 0 - 100

NOTE: Due to the contouring methods used, the actual value of the datapoints may not be represented by the contours. To compensate a colored point with a radius of 50m has been manually placed under each datapoint to represent its actual value and potential spatial extent.



Job Title

**North East New Territories
New Development Areas
Planning and Engineering
Study - Investigation**

Job Number: 25278

Contour Plan to show
Projected Maximum
Arsenic Concentration
Distribution at 4m below
Proposed Formation Level

Scale: 1:10,000
Date: March 2012
Figure No.: 13A
 Drawn RHL Checked SWM Approved

Legend

- Study Area
- GI Locations
- Approximate area requiring treatment*

Projected Arsenic Concentration (mg/kg)

- 600+
- 500 - 600
- 400 - 500
- 300 - 400
- 200 - 300
- 100 - 200
- 0 - 100

NOTE: Due to the contouring methods used, the actual value of the datapoints may not be represented by the contours. To compensate a colored point with a radius of 50m has been manually placed under each datapoint to represent its actual value and potential spatial extent.

ARUP

www.arup.com

Job Title

**North East New Territories
New Development Areas
Planning and Engineering
Study - Investigation**

Job Number: 25278

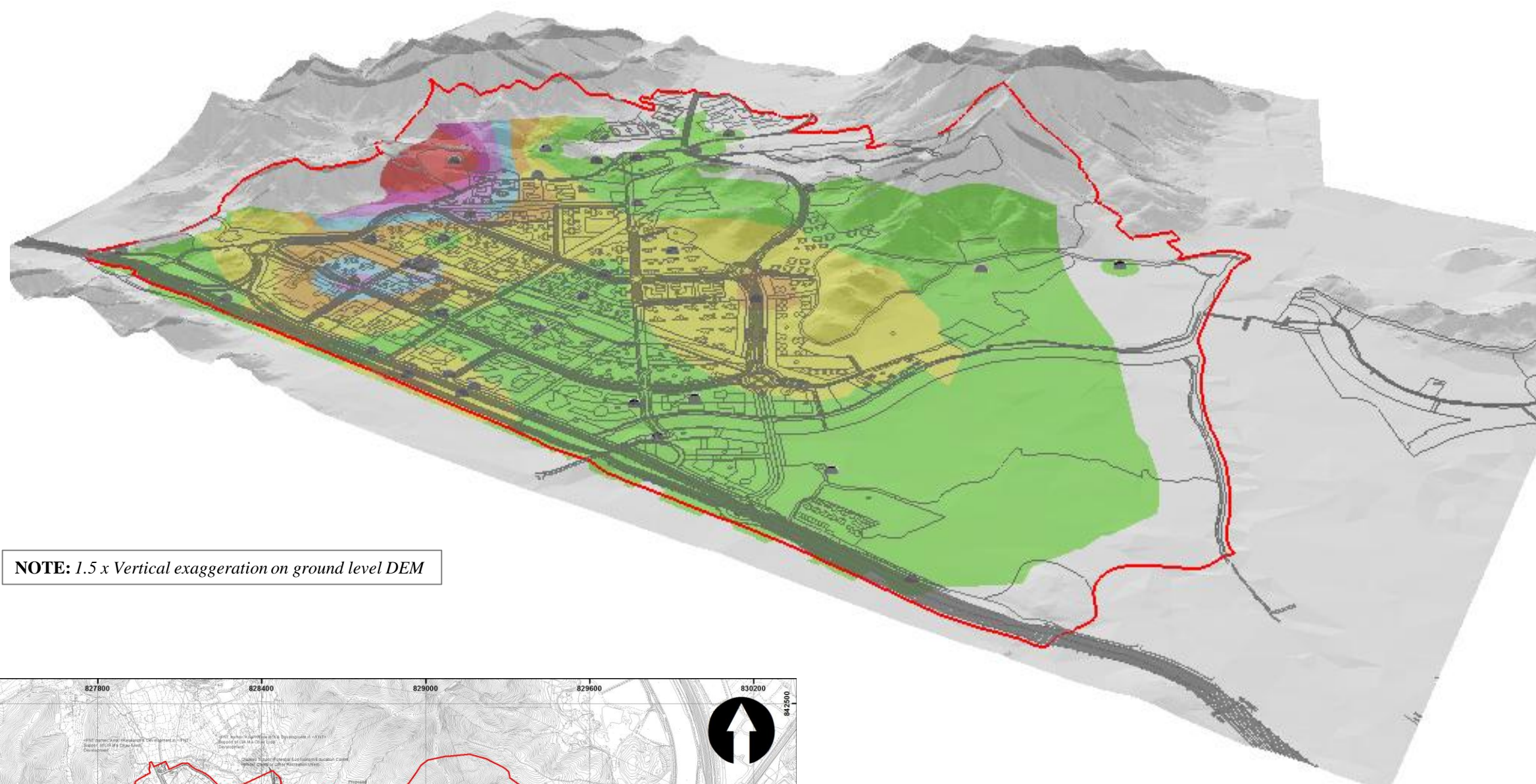
Contour Plan to show
Projected Maximum
Arsenic Concentration
Distribution at 4m below
Proposed Formation Level

Scale: 1:10,000

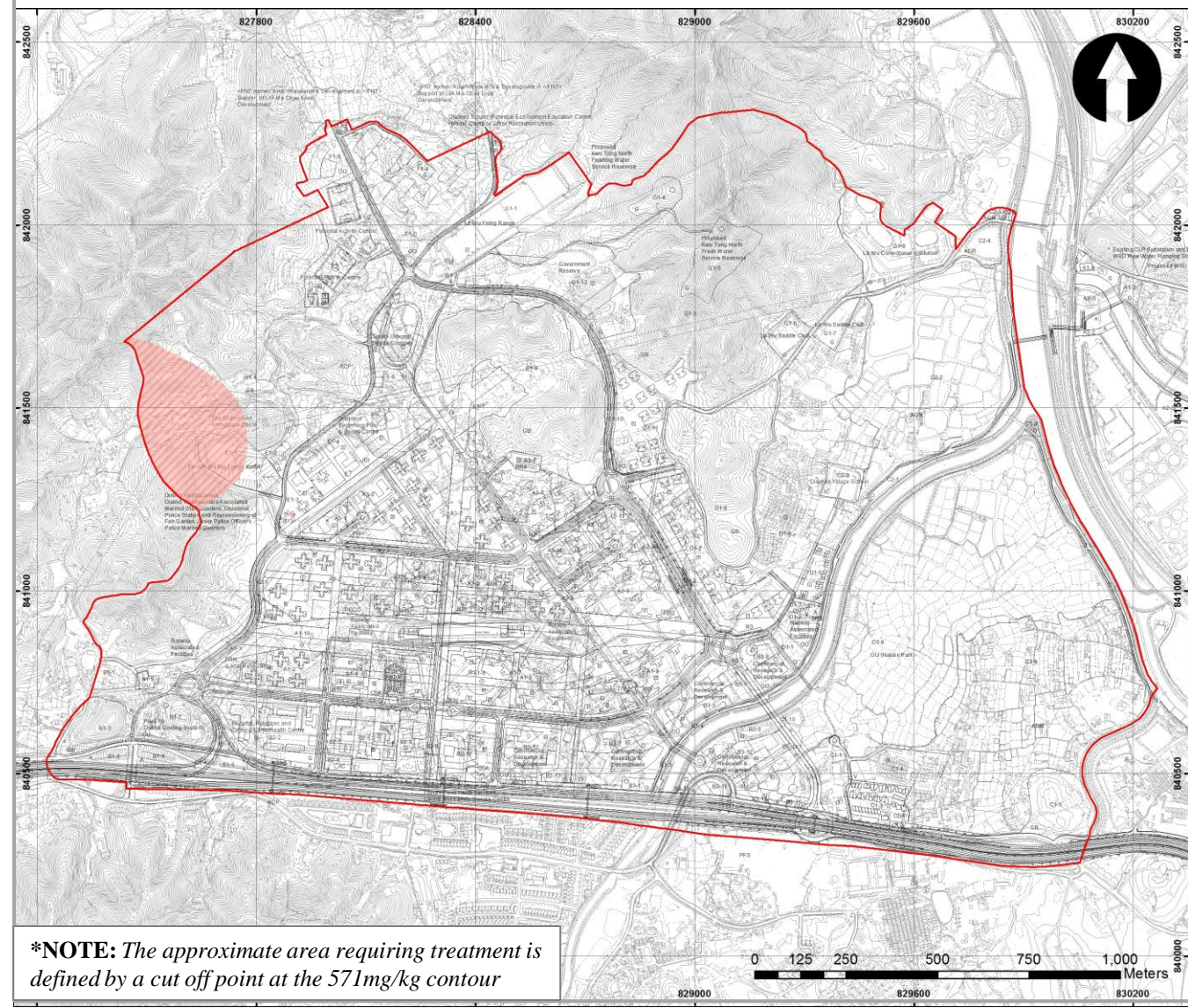
Date: March 2012

Figure No.: 13B

Drawn RHL Checked SWM Approved



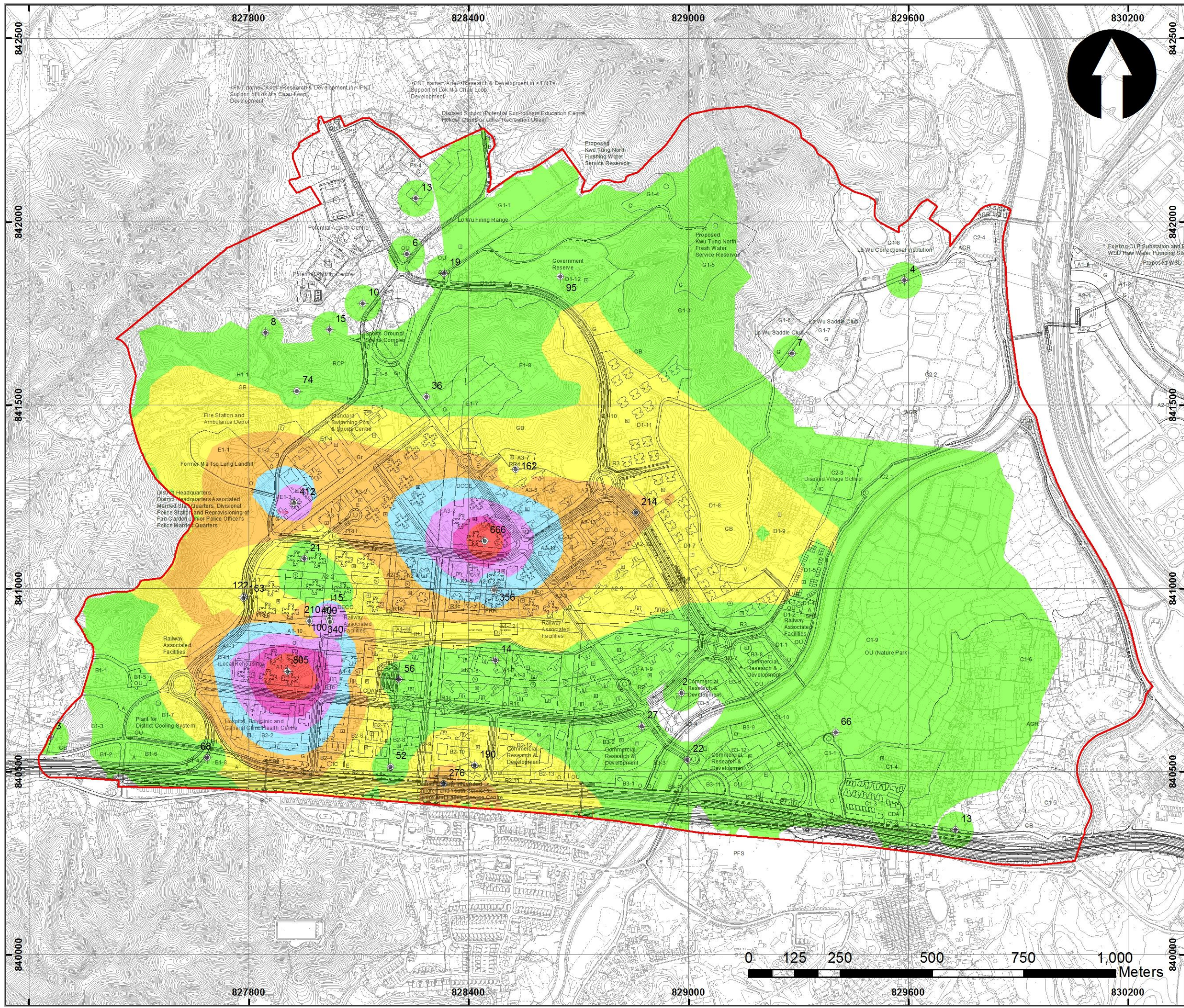
NOTE: 1.5 x Vertical exaggeration on ground level DEM



***NOTE:** The approximate area requiring treatment is defined by a cut off point at the 571mg/kg contour

Sample ID	Arsenic Concentration (kg/mg)
KTN-23b-1 (1.5)	160
KTN-23b-2 (1.0)	120
KTN-77,78-1 (1.0)	130
KTN-77,78-2 (0.9)	220
KTN-77,78-4 (1.0)	110
KTN-77,78-5 (1.0)	160
KTN-77,78-6 (1.0)	330
KTN-77,78-7 (1.0)	380
KTN-77,78-8 (1.0)	430
KTN-BH11 (3.0)	818
KTN-BH12 (1.5)	42
KTN-BH13 (1.0)	128
KTN-BH14 (1.0)	33
KTN-BH15 (0.5)	676
KTN-BH16 (0.5)	14
KTN-BH17 (3.05)	46
KTN-BH18 (1.0)	66
KTN-BH19 (1.0)	8
KTN-BH20 (3.15)	22
KTN-BH21 (1.6)	81
KTN-BH22 (1.5)	30
KTN-BH23 (1.0)	20

Sample ID	Arsenic Concentration (kg/mg)
KTN-BH24 (1.5)	17
KTN-BH25 (1.5)	40
KTN-BH28 (1.0)	85
KTN-ASBH01a (5.5-5.95)	97
KTN-ASBH04 (5.5-5.95)	46
KTN-ASBH06 (5.5-5.95)	16
KTN-ASBH07 (1.0)	84
KTN-ASBH08 (0.5)	62
KTN-ASBH09 (3.0-3.45)	442
KTN-ASBH12 (3.0-3.45)	432
KTN-ASBH13 (1.5)	177
KTN-ASBH14a (1.0)	191
KTN-ASBH14b (0.5)	417
KTN-ASBH15 (0.5)	31
KTN-ASBH20 (0.5)	219
KTN-ASBH21 (1.5)	73
KTN-ASBH29 (1.5)	155
KTN-ASBH32 (1.5)	65
KTN-ASBH38 (1.0)	22
KTN-ASBH Offsite (1.5)	214
KTN-ASBH Offsite (a) (1.5)	262



Legend

- Study Area
- GI Locations

Projected Arsenic Concentration (mg/kg)

- 600+
- 500 - 600
- 400 - 500
- 300 - 400
- 200 - 300
- 100 - 200
- 0 - 100

NOTE: Due to the contouring methods used, the actual value of the datapoints may not be represented by the contours. To compensate a colored point with a radius of 50m has been manually placed under each datapoint to represent its actual value and potential spatial extent.

ARUP
www.arup.com

Job Title

**North East New Territories
New Development Areas
Planning and Engineering
Study - Investigation**

Job Number: 25278

Contour Plan to show
Projected Maximum
Arsenic Concentration
Distribution at 6m below
Proposed Formation Level

Scale:	1:10,000
Date:	March 2012
Figure No.:	14A
Drawn RHL	Checked SWM
	Approved

Legend

- Study Area
- GI Locations
- Approximate area requiring treatment*

Projected Arsenic Concentration (mg/kg)

- 600+
- 500 - 600
- 400 - 500
- 300 - 400
- 200 - 300
- 100 - 200
- 0 - 100

NOTE: Due to the contouring methods used, the actual value of the datapoints may not be represented by the contours. To compensate a colored point with a radius of 50m has been manually placed under each datapoint to represent its actual value and potential spatial extent.

ARUP

www.arup.com

Job Title

**North East New Territories
New Development Areas
Planning and Engineering
Study - Investigation**

Job Number: 25278

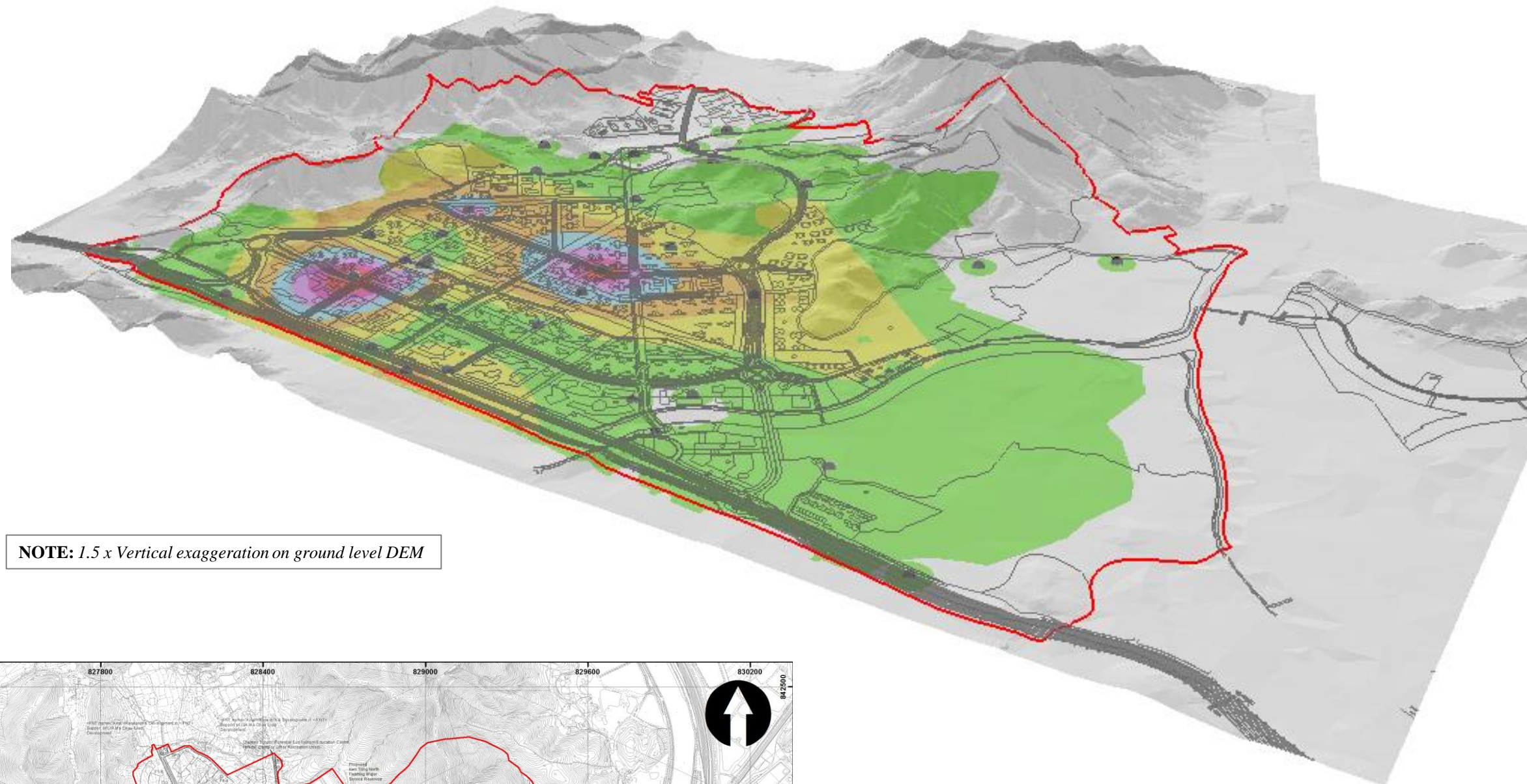
Contour Plan to show
Projected Maximum
Arsenic Concentration
Distribution at 6m below
Proposed Formation Level

Scale: 1:10,000

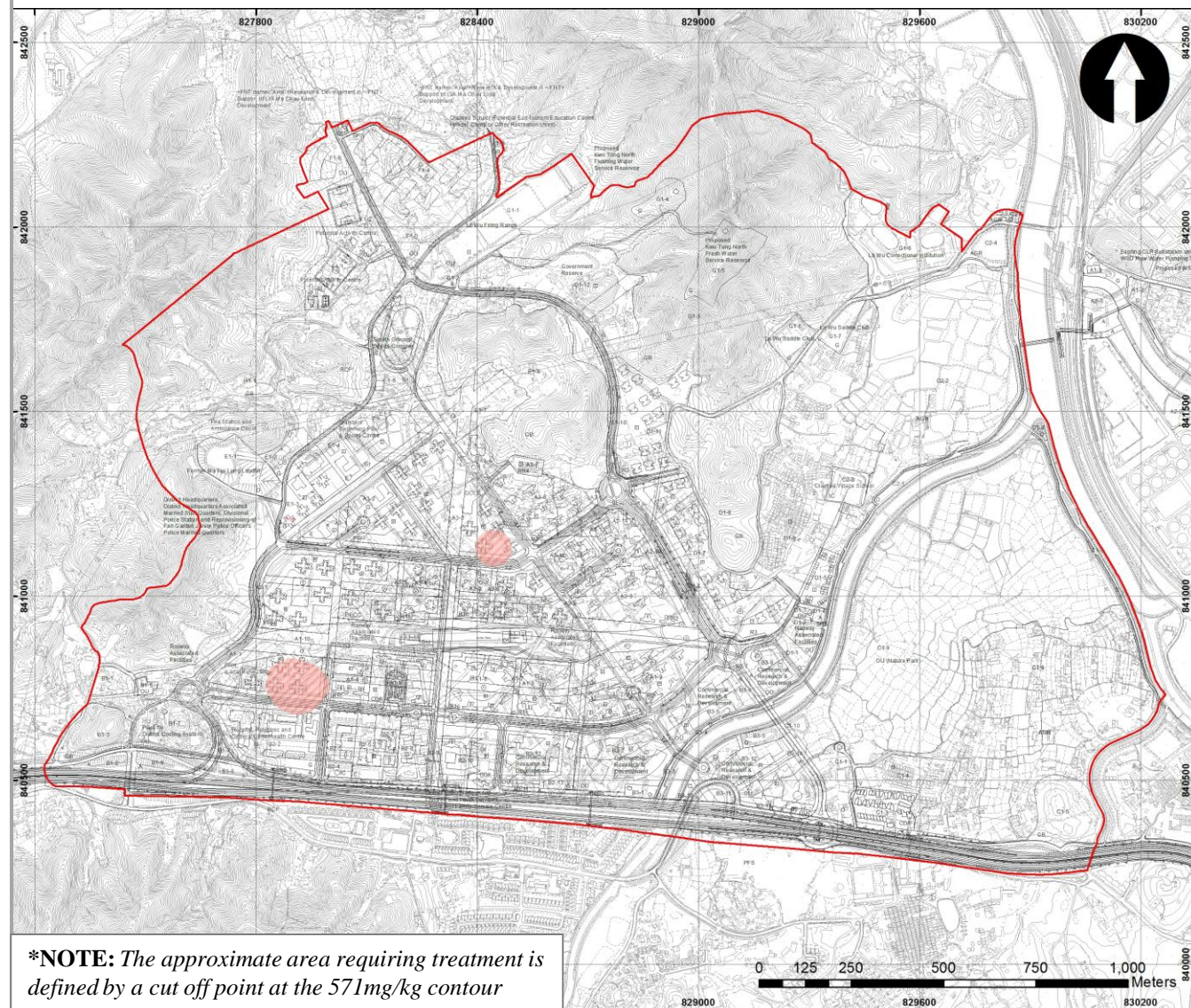
Date: March 2012

Figure No.: 14B

Drawn RHL Checked SWM Approved

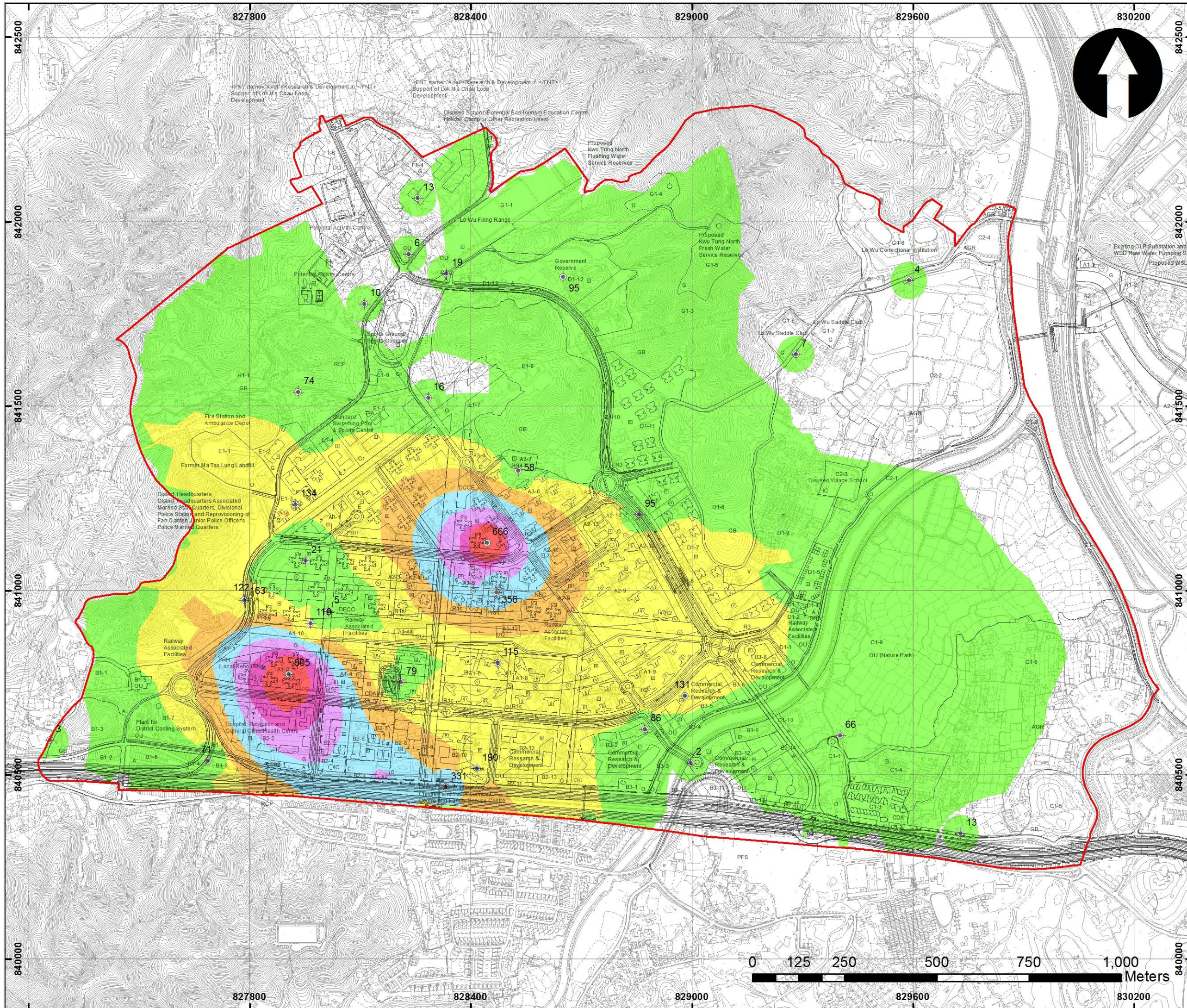


NOTE: 1.5 x Vertical exaggeration on ground level DEM



***NOTE:** The approximate area requiring treatment is defined by a cut off point at the 571mg/kg contour

Sample ID	Arsenic Concentration (kg/mg)	Sample ID	Arsenic Concentration (kg/mg)
KTN-77,78-1 (1.0)	210	KTN-ASBH01a (5.5-5.95)	805
KTN-77,78-5 (1.0)	15	KTN-ASBH04 (5.5-5.95)	190
KTN-77,78-7 (1.0)	100	KTN-ASBH06 (5.5-5.95)	14
KTN-77,78-8 (1.0)	340	KTN-ASBH07 (1.0)	356
KTN-BH11 (3.0)	400	KTN-ASBH08 (0.5)	666
KTN-BH13 (1.0)	8	KTN-ASBH09 (3.0-3.45)	412
KTN-BH14 (1.0)	10	KTN-ASBH12 (3.0-3.45)	21
KTN-BH15 (0.5)	13	KTN-ASBH13 (1.5)	162
KTN-BH16 (0.5)	74	KTN-ASBH14a (1.0)	52
KTN-BH17 (3.05)	15	KTN-ASBH14b (0.5)	56
KTN-BH18 (1.0)	6	KTN-ASBH15 (0.5)	68
KTN-BH19 (1.0)	19	KTN-ASBH20 (0.5)	27
KTN-BH20 (3.15)	95	KTN-ASBH21 (1.5)	2
KTN-BH21 (1.6)	3	KTN-ASBH29 (1.5)	214
KTN-BH22 (1.5)	276	KTN-ASBH32 (1.5)	36
KTN-BH23 (1.0)	13	KTN-ASBH38 (1.0)	22
KTN-BH24 (1.5)	4	KTN-ASBH Offsite (1.5)	122
KTN-BH25 (1.5)	7	KTN-ASBH Offsite (a) (1.5)	163
KTN-BH28 (1.0)	66		



Legend

- Study Area
- GI Locations

Projected Arsenic Concentration (mg/kg)

- 600+
- 500 - 600
- 400 - 500
- 300 - 400
- 200 - 300
- 100 - 200
- 0 - 100

NOTE: Due to the contouring methods used, the actual value of the datapoints may not be represented by the contours. To compensate a colored point with a radius of 50m has been manually placed under each datapoint to represent its actual value and potential spatial extent.



Job Title

**North East New Territories
New Development Areas
Planning and Engineering
Study - Investigation**

Job Number: 25278

Contour Plan to show
Projected Maximum
Arsenic Concentration
Distribution at 8m below
Proposed Formation Level

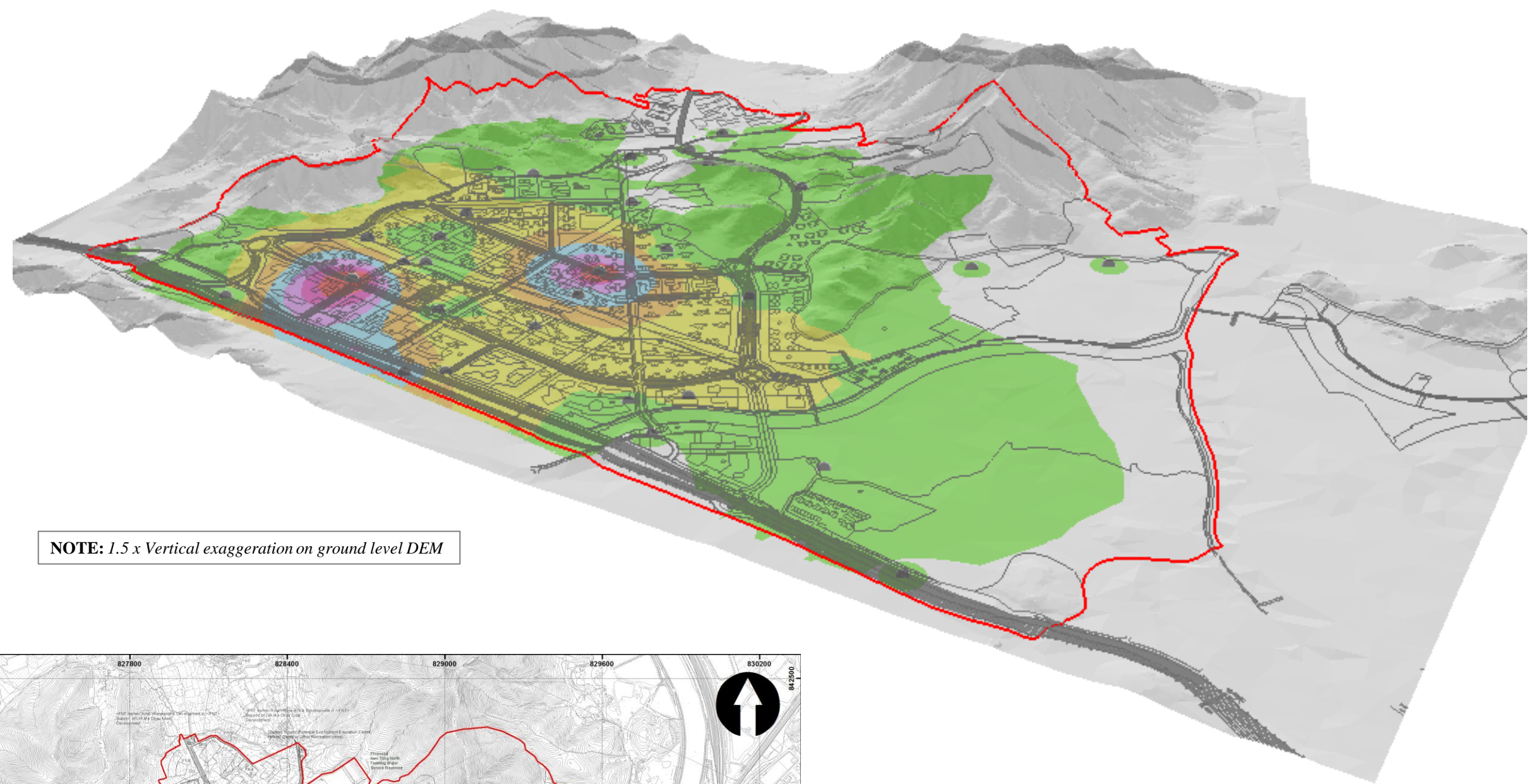
Scale: 1:10,000

Date: March 2012

Figure No.: 15A

Drawn RHL Checked SWM Approved





NOTE: 1.5 x Vertical exaggeration on ground level DEM

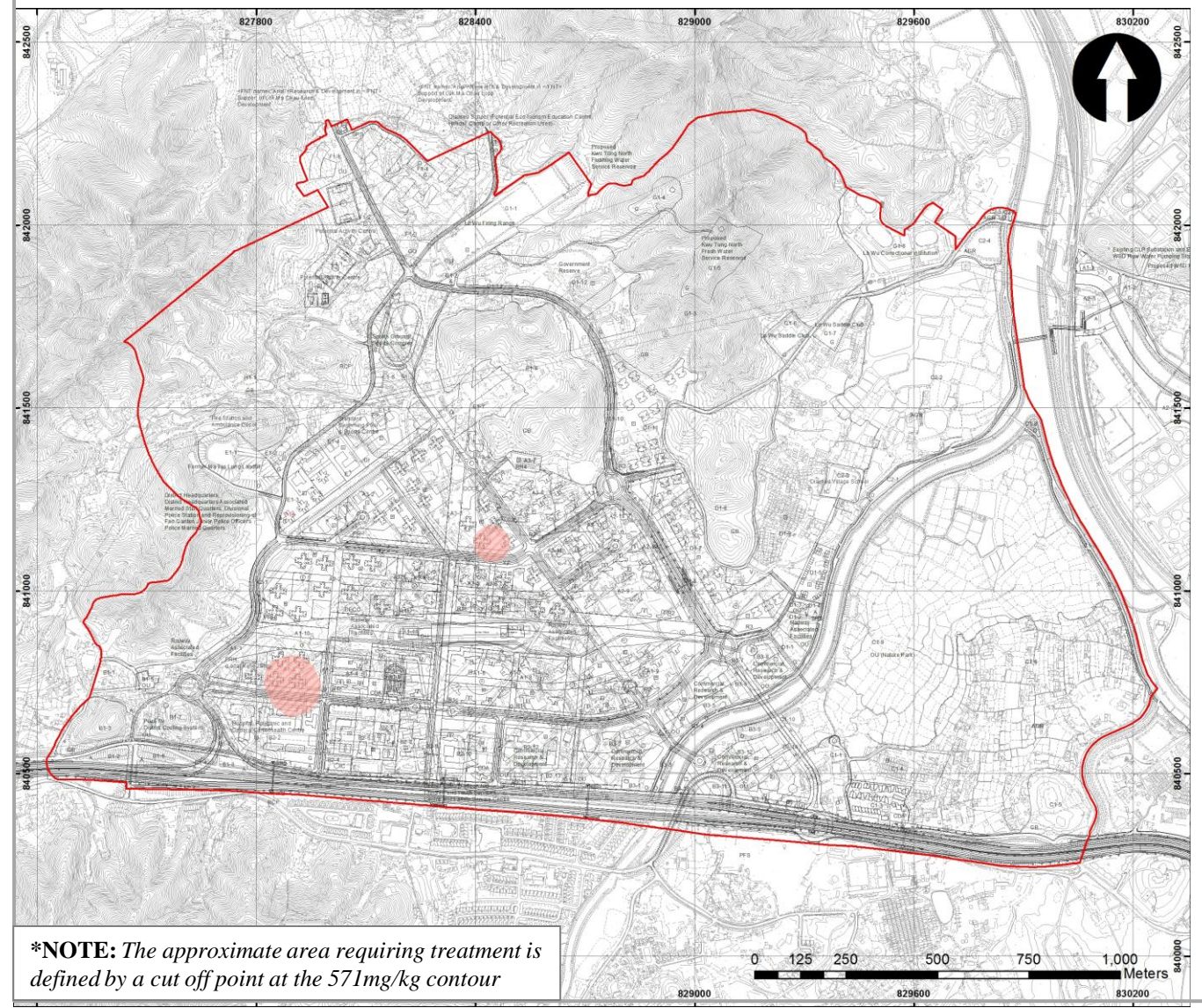
Legend

- Study Area
- GI Locations
- Approximate area requiring treatment*

Projected Arsenic Concentration (mg/kg)

- 600+
- 500 - 600
- 400 - 500
- 300 - 400
- 200 - 300
- 100 - 200
- 0 - 100

NOTE: Due to the contouring methods used, the actual value of the datapoints may not be represented by the contours. To compensate a colored point with a radius of 50m has been manually placed under each datapoint to represent its actual value and potential spatial extent.



***NOTE:** The approximate area requiring treatment is defined by a cut off point at the 571mg/kg contour

Sample ID	Arsenic Concentration (kg/mg)
KTN-77,78-1 (1.0)	110
KTN-77,78-5 (1.0)	5
KTN-BH14 (1.0)	10
KTN-BH15 (0.5)	13
KTN-BH16 (0.5)	74
KTN-BH18 (1.0)	6
KTN-BH19 (1.0)	19
KTN-BH20 (3.15)	95
KTN-BH21 (1.6)	3
KTN-BH22 (1.5)	331
KTN-BH23 (1.0)	13
KTN-BH24 (1.5)	4
KTN-BH25 (1.5)	7
KTN-BH28 (1.0)	66
KTN-ASBH01a (5.5-5.95)	805
KTN-ASBH04 (5.5-5.95)	190

Sample ID	Arsenic Concentration (kg/mg)
KTN-ASBH06 (5.5-5.95)	115
KTN-ASBH07 (1.0)	356
KTN-ASBH08 (0.5)	666
KTN-ASBH09 (3.0-3.45)	134
KTN-ASBH12 (3.0-3.45)	21
KTN-ASBH13 (1.5)	58
KTN-ASBH14b (0.5)	79
KTN-ASBH15 (0.5)	71
KTN-ASBH20 (0.5)	86
KTN-ASBH21 (1.5)	131
KTN-ASBH29 (1.5)	95
KTN-ASBH32 (1.5)	16
KTN-ASBH38 (1.0)	2
KTN-ASBH Offsite (1.5)	122
KTN-ASBH Offsite (a) (1.5)	163

ARUP
www.arup.com

Job Title

**North East New Territories
New Development Areas
Planning and Engineering
Study - Investigation**

Job Number: 25278

Contour Plan to show
Projected Maximum
Arsenic Concentration
Distribution at 8m below
Proposed Formation Level

Scale: 1:10,000

Date: March 2012

Figure No.: 15B

Drawn RHL Checked SWM Approved