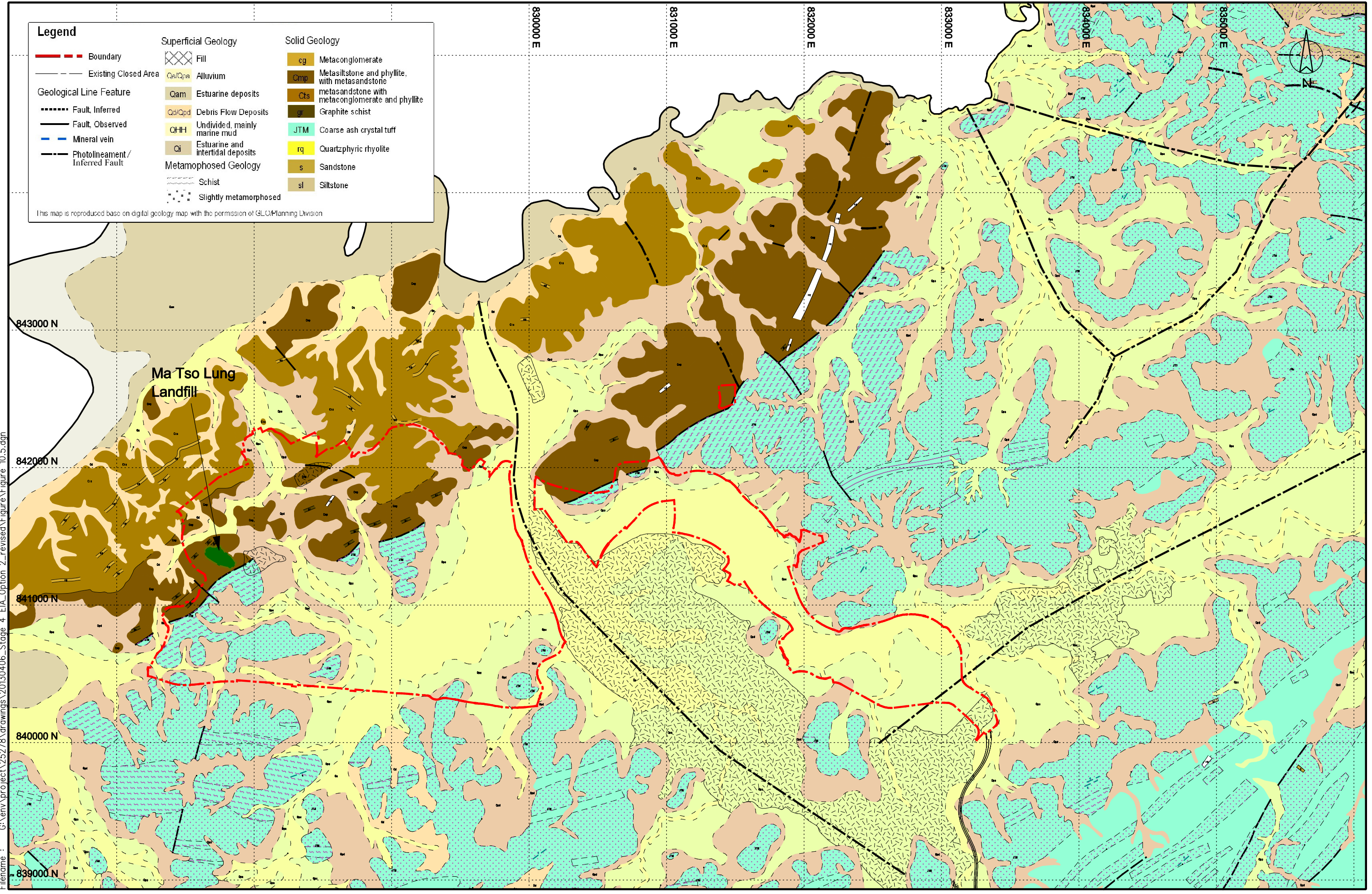


**Legend**

Boundary	Fill	<b>Superficial Geology</b>	<b>Solid Geology</b>
Existing Closed Area	Alluvium	Qm/Opn	cg
<b>Geological Line Feature</b>	Qam	Qd/Cpd	Cmp
Fault, Inferred	Qd/Cpd	Qd/H	Cts
Fault, Observed	Ci	Ci	gr
Mineral vein	<b>Metamorphosed Geology</b>	Schist	JTM
Photolineament / Inferred Fault	Slightly metamorphosed	Slightly metamorphosed	rq
			s
			sl

This map is reproduced based on digital geology map with the permission of GLU/Planning Division



Printed by : 4/6/2013  
 Filename : G:\env\project\25278\drawings\20130406\_Stage 4\_EIA\_Option 2\_revised\Figure\Figure 10.5.dgn



**ARUP**

Job Title  
**Agreement No. CE 61/2007 (CE)**  
 North East New Territories New Development Areas  
 Planning and Engineering Study - Investigation

Drawing Title  
**Geological Plan**

D	FIFTH ISSUE	04/13	Drawn	GL	Date	04/13
C	FOURTH ISSUE	01/13	Checked	KL	Approved	ST
B	THIRD ISSUE	07/12	Scale	1:25000 on A3		
A	SECOND ISSUE	12/11	Rev.	Description	Date	
-	FIRST ISSUE	10/10				

Drawing No.  
**Figure 10.5**  
 Rev. **D**