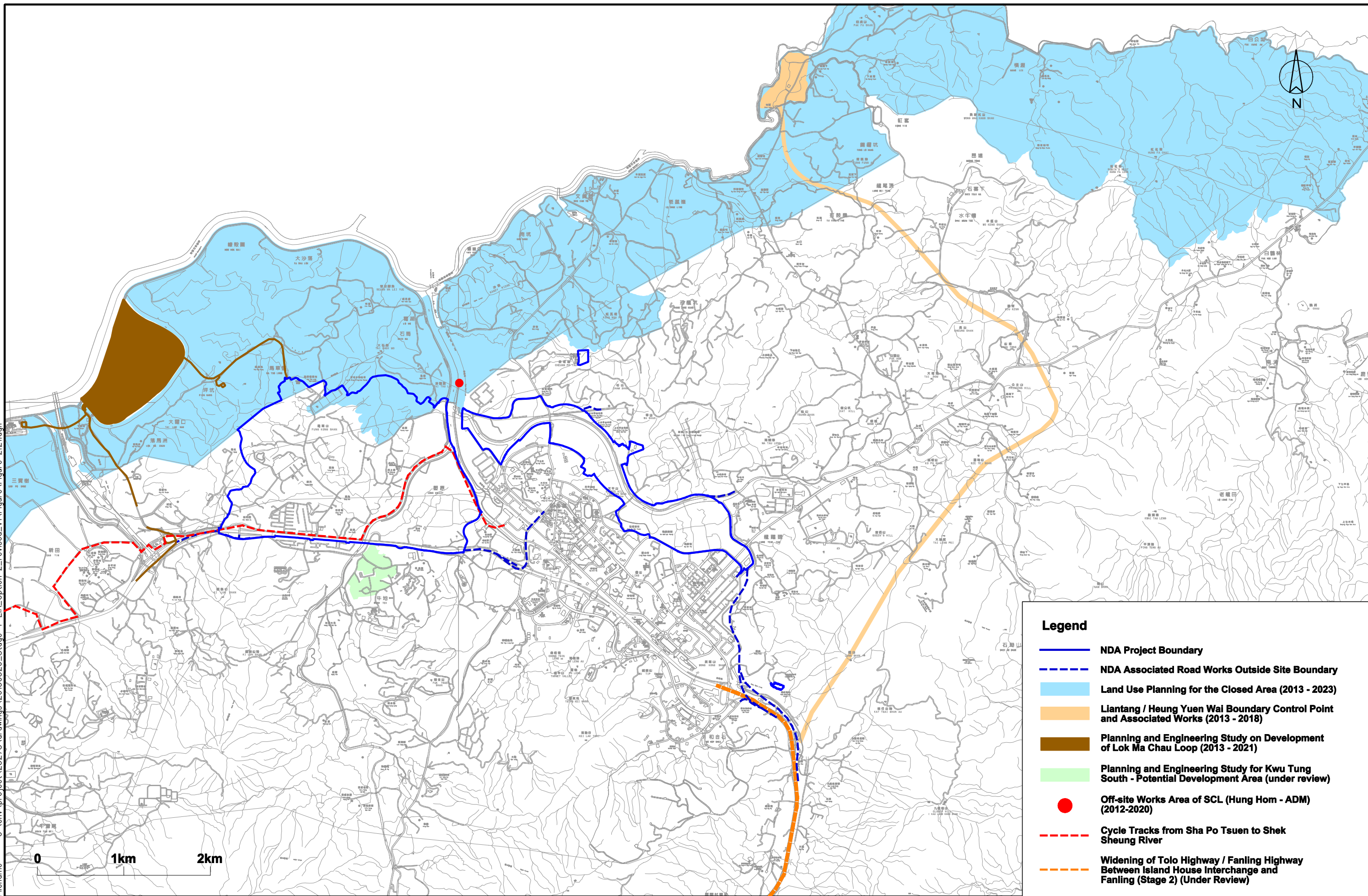


Printed by : 6/12/2013  
 Filename : G:\env\project\25278\drawings\20130520\_Stage 4 EIA Option 2\_revised\_v1\Figure\Figure 2.21.dgn



**Legend**

- NDA Project Boundary
- - - NDA Associated Road Works Outside Site Boundary
- Land Use Planning for the Closed Area (2013 - 2023)
- Liantang / Heung Yuen Wai Boundary Control Point and Associated Works (2013 - 2018)
- Planning and Engineering Study on Development of Lok Ma Chau Loop (2013 - 2021)
- Planning and Engineering Study for Kwu Tung South - Potential Development Area (under review)
- Off-site Works Area of SCL (Hung Hom - ADM) (2012-2020)
- - - Cycle Tracks from Sha Po Tsuen to Shek Sheung River
- - - Widening of Tolo Highway / Fanling Highway Between Island House Interchange and Fanling (Stage 2) (Under Review)



**ARUP**

Job Title  
**Agreement No. CE 61/2007 (CE)**  
 North East New Territories New Development Areas  
 Planning and Engineering Study - Investigation

Drawing Title  
**Locations of Concurrent  
 Projects – Construction  
 Phase**

E	SIXTH ISSUE	06/13	Drawn	GL	Date	06/13
D	FIFTH ISSUE	04/13	Checked	KL	Approved	ST
C	FOURTH ISSUE	02/13	Scale	1:40000 ON A3		
B	THIRD ISSUE	07/12	Rev	Description	Date	
A	SECOND ISSUE	12/11				

Rev. **E**

Drawing No.  
**Figure 2.21**