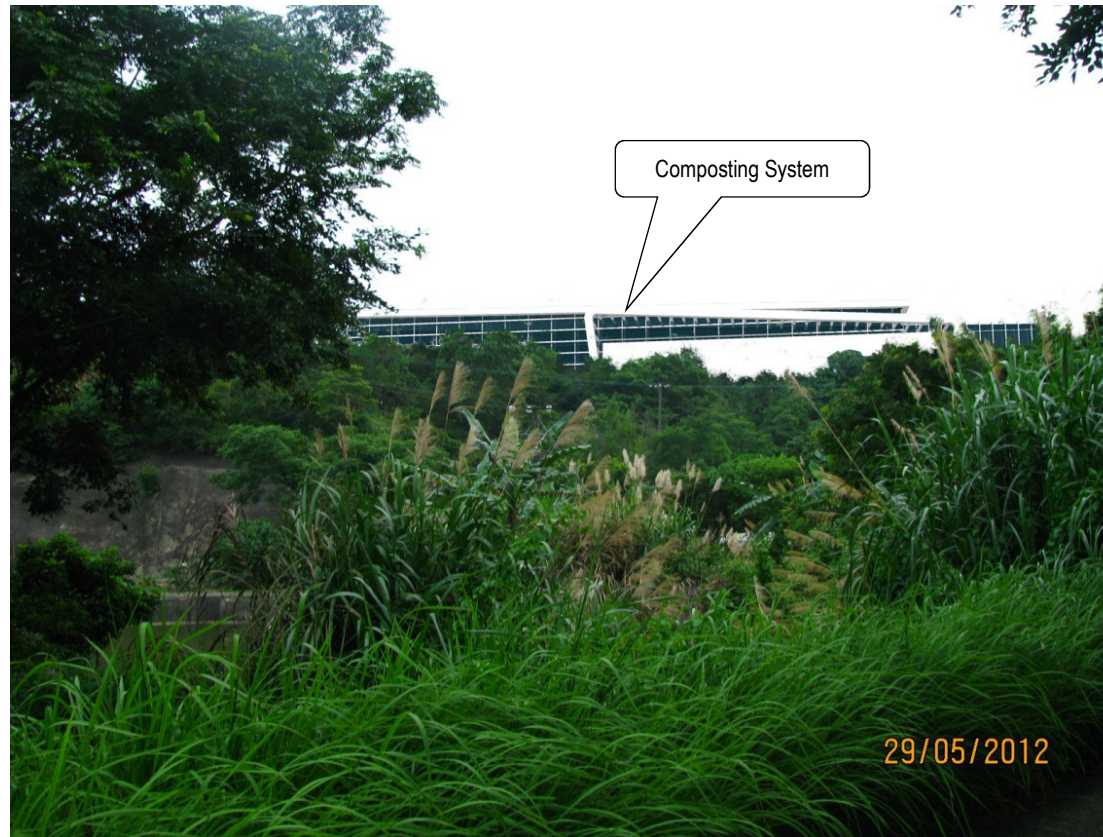
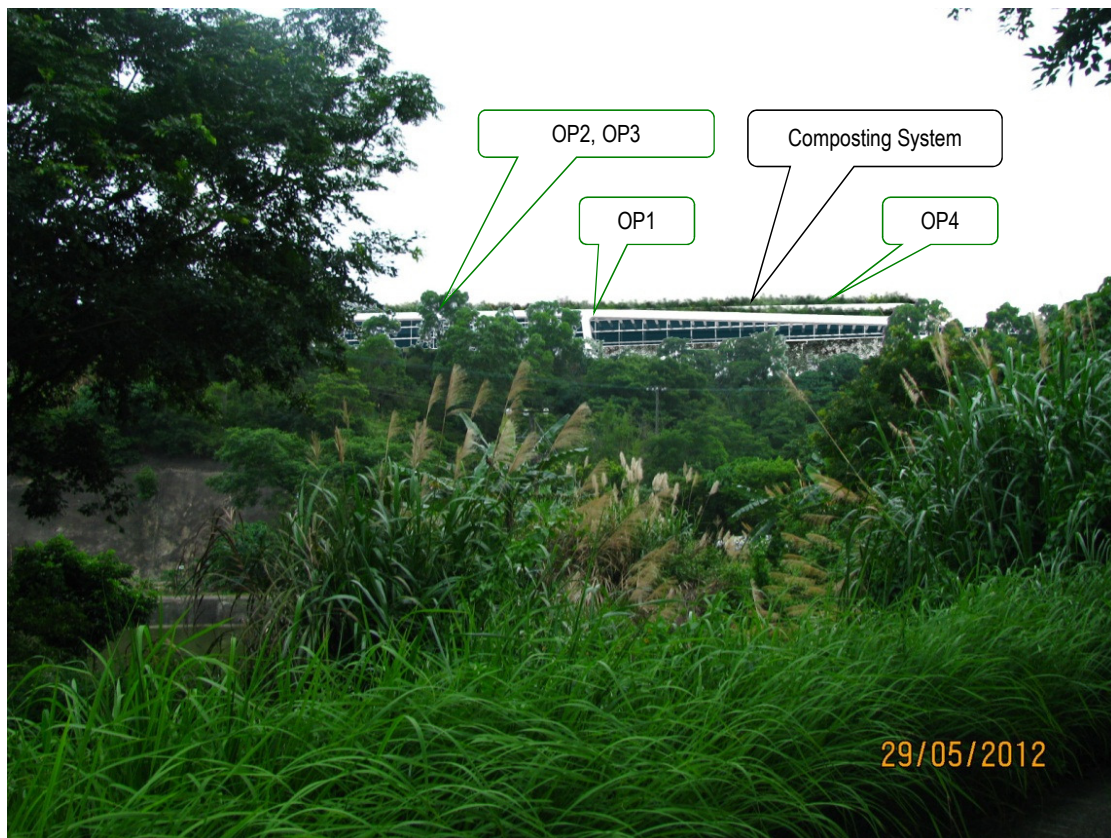




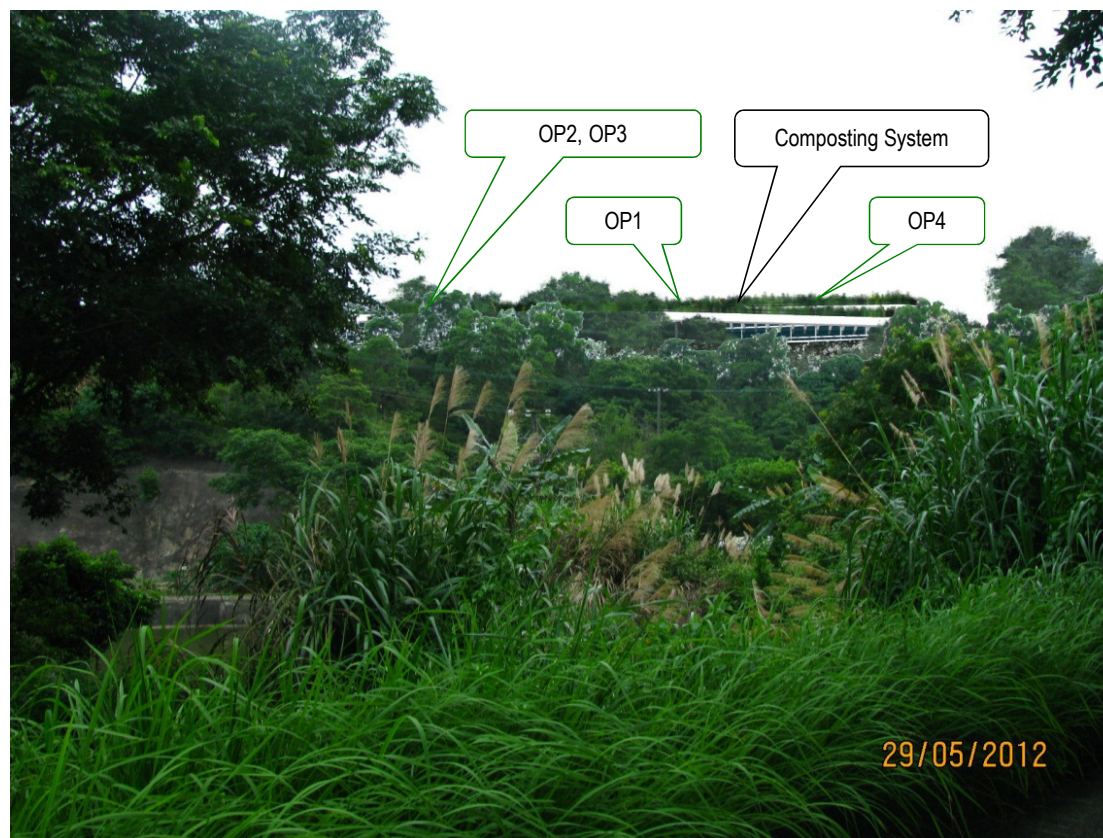
Existing View



Day 1 of Operation Phase without Landscape and Visual Mitigation Measures



Day 1 of Operation Phase with Landscape and Visual Mitigation Measures



Year 10 of Operation Phase with Landscape and Visual Mitigation Measures

Notes

Key to symbols

CP1: Existing trees are retained whenever possible and protected during construction
 CP2: The construction site activities are carefully controlled to minimize impact such as light, noise, tree felling and eyesores
 CP3: Transplantation would be performed whenever possible

OP1: The location and layout of the proposed OWTF and associated facilities are designed in a way that has the lowest impact to the proposed site
 OP2: Amenity / Compensatory planting will be utilized throughout the site
 OP3: Planting will be added by man-made slopes to give a more natural appearance
 OP4: Vertical and rooftop greening will maximize green space and soften hard structures

Reference drawings

--	--	--	--	--	--

P1	12	MING	FIRST ISSUE	LW	AFK
Rev	Date	Drawn	Description	Ch'kd	App'd

20/F Two Landmark East
 100 How Ming Street
 Kowloon, Kowloon
 Hong Kong
 ☎ +852 2828 8757
 ☎ +852 2827 1823
 www.mottmac.com.hk

Client

Environmental Protection Department
 The Government of the Hong Kong
 Special Administrative Region

Project

AGREEMENT NO. CE34/2011(EP)
 DEVELOPMENT OF ORGANIC WASTE
 TREATMENT FACILITIES PHASE II -
 FEASIBILITY STUDY

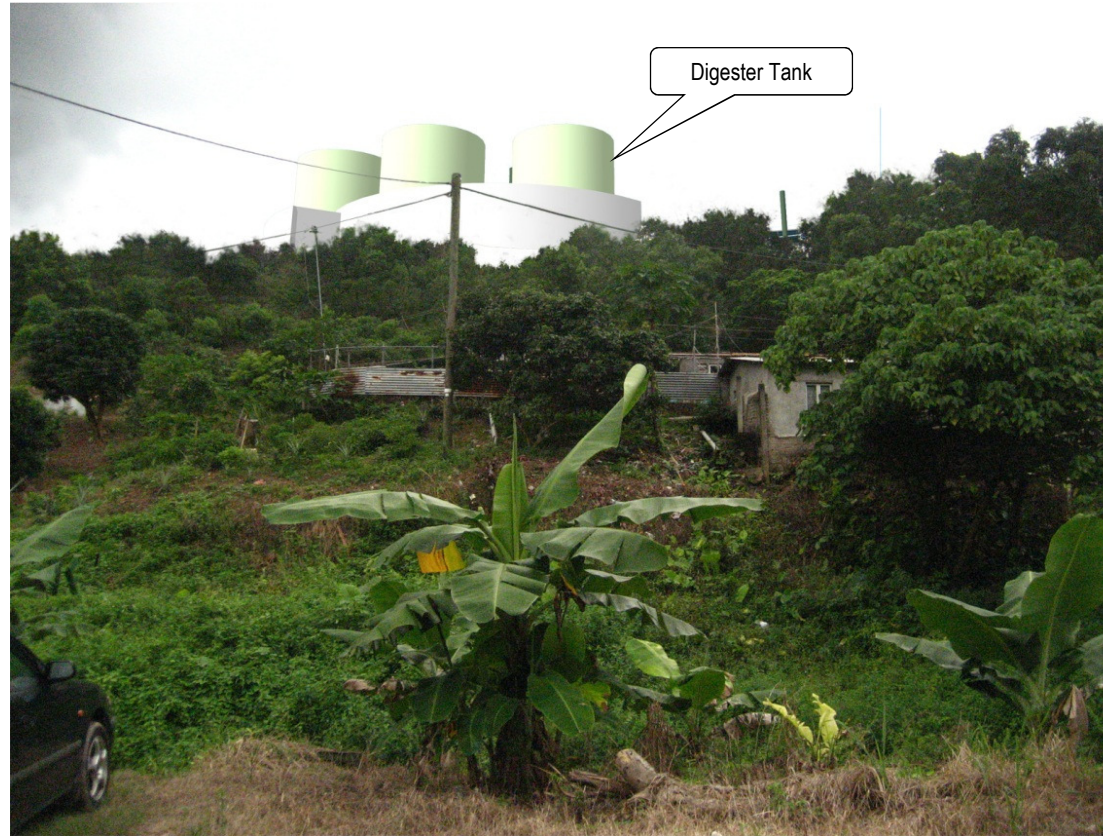
Title

PHOTOMONTAGE – VANTAGE
 POINT FROM VSR1.1 – WORKERS
 IN SAN UK LING HOLING CENTRE

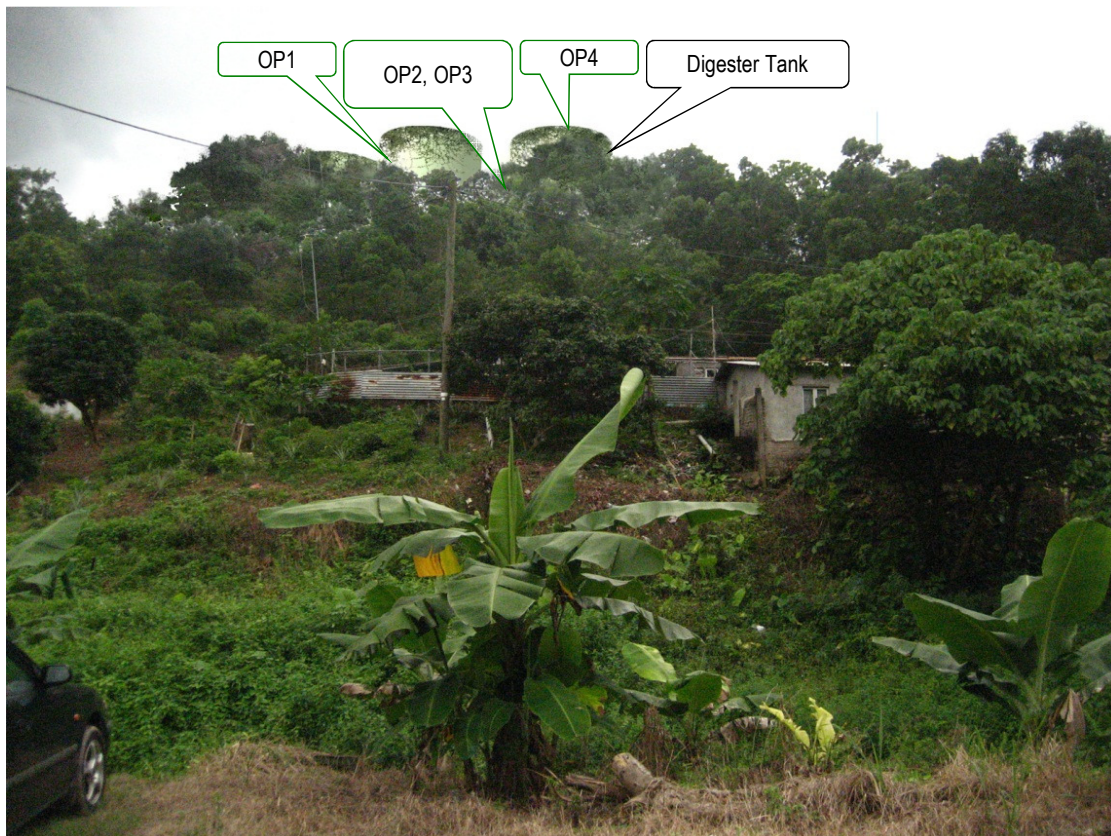
Designed	LW	Eng check	JC
Drawn	MING	Coordination	BL
Dwg check	LW	Approved	AFK
Scale at A1	Status	Rev	
1:2500	PRE	P1	
Drawing Number	FIGURE 10.12a		



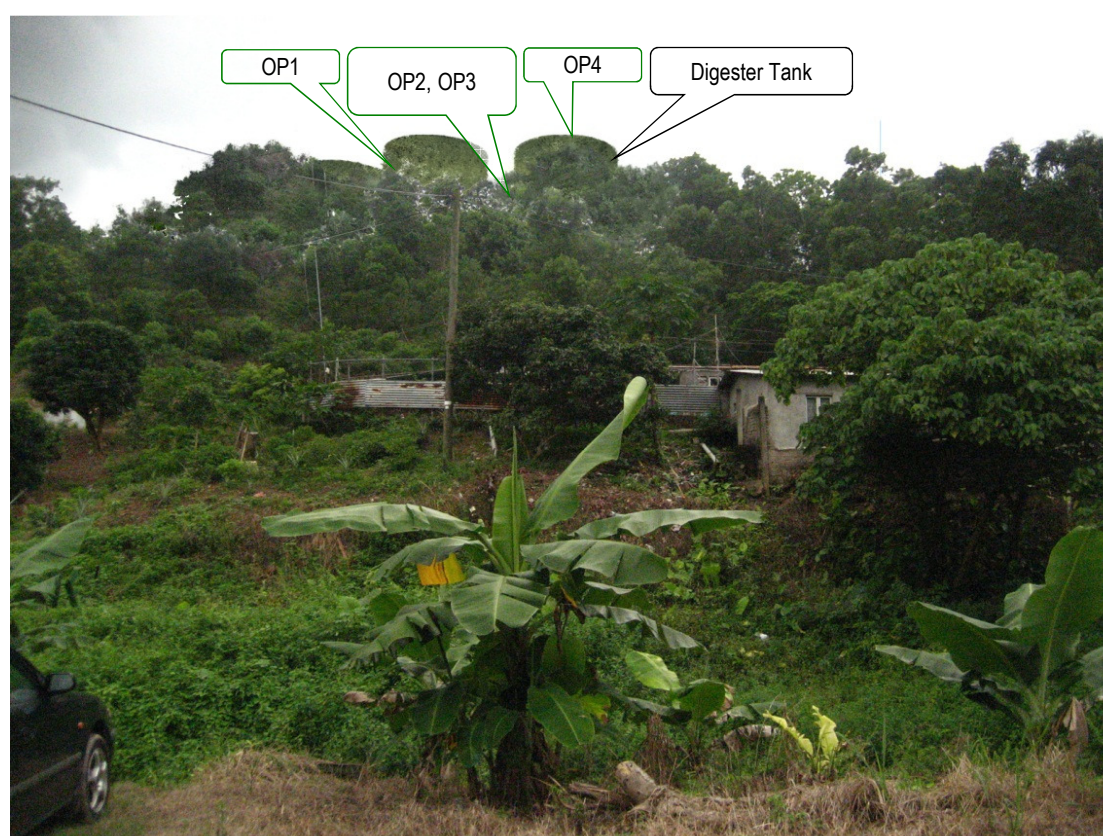
Existing View



Day 1 of Operation Phase without Landscape and Visual Mitigation Measures



Day 1 of Operation Phase with Landscape and Visual Mitigation Measures



Year 10 of Operation Phase with Landscape and Visual Mitigation Measures

Notes

Key to symbols

CP1: Existing trees are retained whenever possible and protected during construction

CP2: The construction site activities are carefully controlled to minimize impact such as light, noise, tree felling and eyesores

CP3: Transplantation would be performed whenever possible

OP1: The location and layout of the proposed OWTF and associated facilities are designed in a way that has the lowest impact to the proposed site

OP2: Amenity / Compensatory planting will be utilized throughout the site

OP3: Planting will be added by man-made slopes to give a more natural appearance

OP4: Vertical and rooftop greening will maximize green space and soften hard structures

Reference drawings

--	--	--	--	--	--

P1	12	MING	FIRST ISSUE	LW	AFK
Rev	Date	Drawn	Description	Ch'kd	App'd

Mott MacDonald

20/F Two Landmark East
100 How Ming Street
Kowloon, Kowloon
Hong Kong
T +852 2828 8757
F +852 2827 1823
W www.mottmac.com.hk

Client

Environmental Protection Department
The Government of the Hong Kong
Special Administrative Region

Project

AGREEMENT NO. CE34/2011(EP)
DEVELOPMENT OF ORGANIC WASTE
TREATMENT FACILITIES PHASE II -
FEASIBILITY STUDY

Title

PHOTOMONTAGE – VANTAGE
POINT FROM VSR2.2 – FARMERS
FROM THE EAST

Designed	LW	Eng check	JC
Drawn	MING	Coordination	BL
Dwg check	LW	Approved	AFK
Scale at A1	Status	Rev	
1:2500	PRE	P1	
Drawing Number	FIGURE 10.12b		



CP1, CP2, CP3

Existing View



Composting System

Day 1 of Operation Phase without Landscape and Visual Mitigation Measures



OP4
Composting System
OP1
OP2, OP3

Day 1 of Operation Phase with Landscape and Visual Mitigation Measures



OP4
Composting System
OP1
OP2, OP3

Year 10 of Operation Phase with Landscape and Visual Mitigation Measures

Notes

Key to symbols

CP1: Existing trees are retained whenever possible and protected during construction
 CP2: The construction site activities are carefully controlled to minimize impact such as light, noise, tree felling and eyesores
 CP3: Transplantation would be performed whenever possible

OP1: The location and layout of the proposed OWTF and associated facilities are designed in a way that has the lowest impact to the proposed site
 OP2: Amenity / Compensatory planting will be utilized throughout the site
 OP3: Planting will be added by man-made slopes to give a more natural appearance
 OP4: Vertical and rooftop greening will maximize green space and soften hard structures

Reference drawings

Rev	Date	Drawn	Description	Ch'kd	App'd
P1	12	MING	FIRST ISSUE	LW	AFK

Rev	Date	Drawn	Description	Ch'kd	App'd
P1	12	MING	FIRST ISSUE	LW	AFK

Mott MacDonald
 20/F Two Landmark East
 100 How Ming Street
 Kowloon, Kowloon
 Hong Kong
 T +852 2828 8757
 F +852 2827 1823
 W www.mottmac.com.hk

Client
 Environmental Protection Department
 The Government of the Hong Kong
 Special Administrative Region

Project
 AGREEMENT NO. CE34/2011(EP)
 DEVELOPMENT OF ORGANIC WASTE
 TREATMENT FACILITIES PHASE II -
 FEASIBILITY STUDY

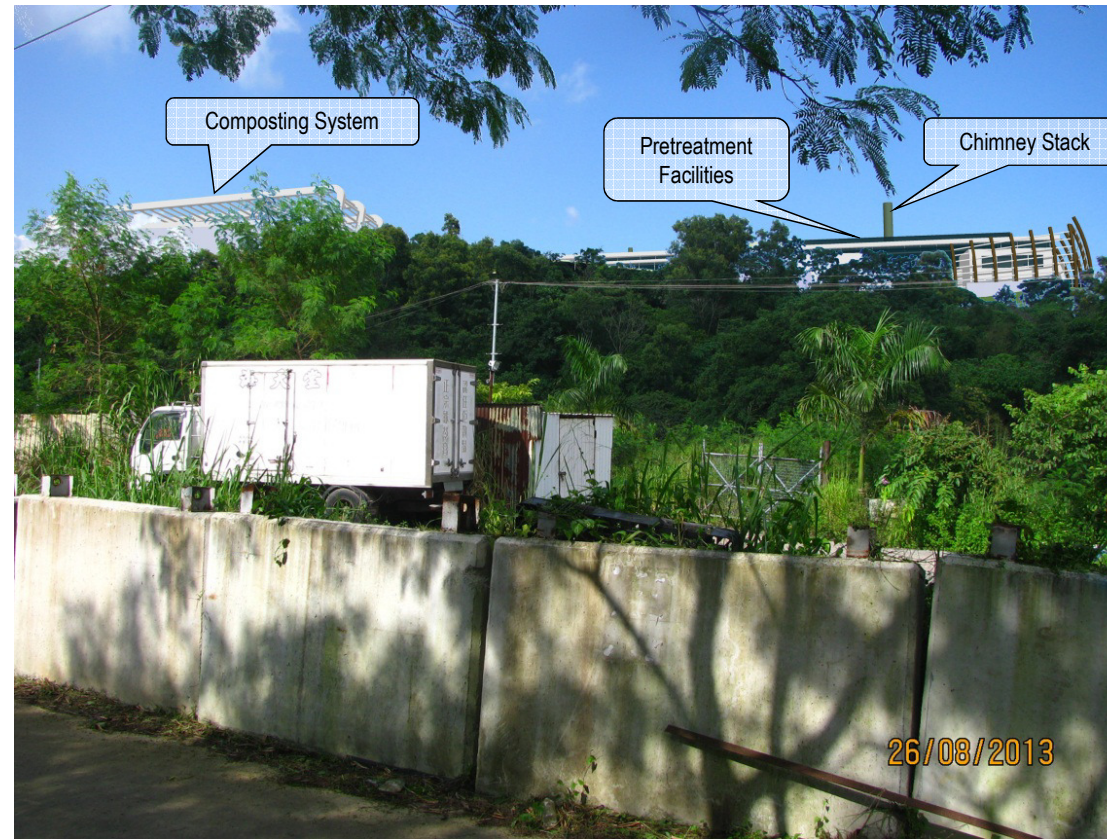
Title
 PHOTOMONTAGE – VANTAGE
 POINT FROM VSR3.2 –
 VILLAGERS FROM THE
 NORTHEAST

Designed	LW	Eng check	JC
Drawn	MING	Coordination	BL
Dwg check	LW	Approved	AFK
Scale at A1	1:2500	Status	PRE
Rev			P1

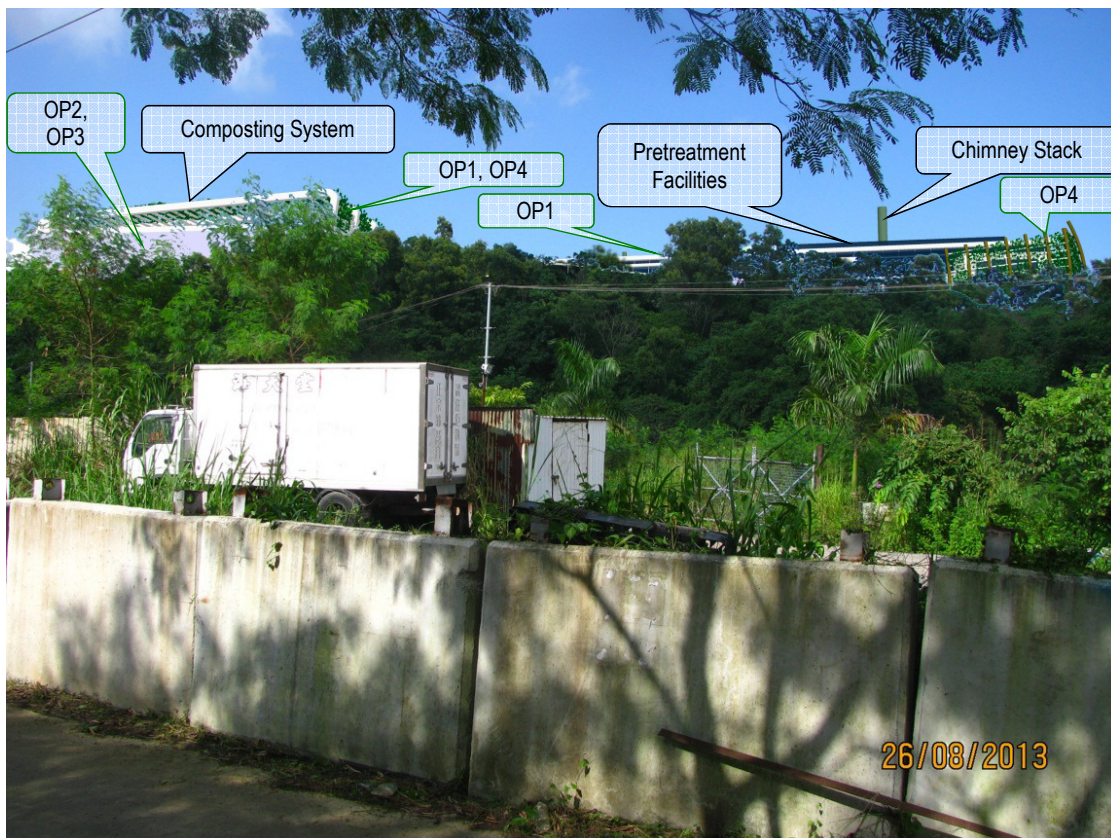
Drawing Number
 FIGURE 10.12c



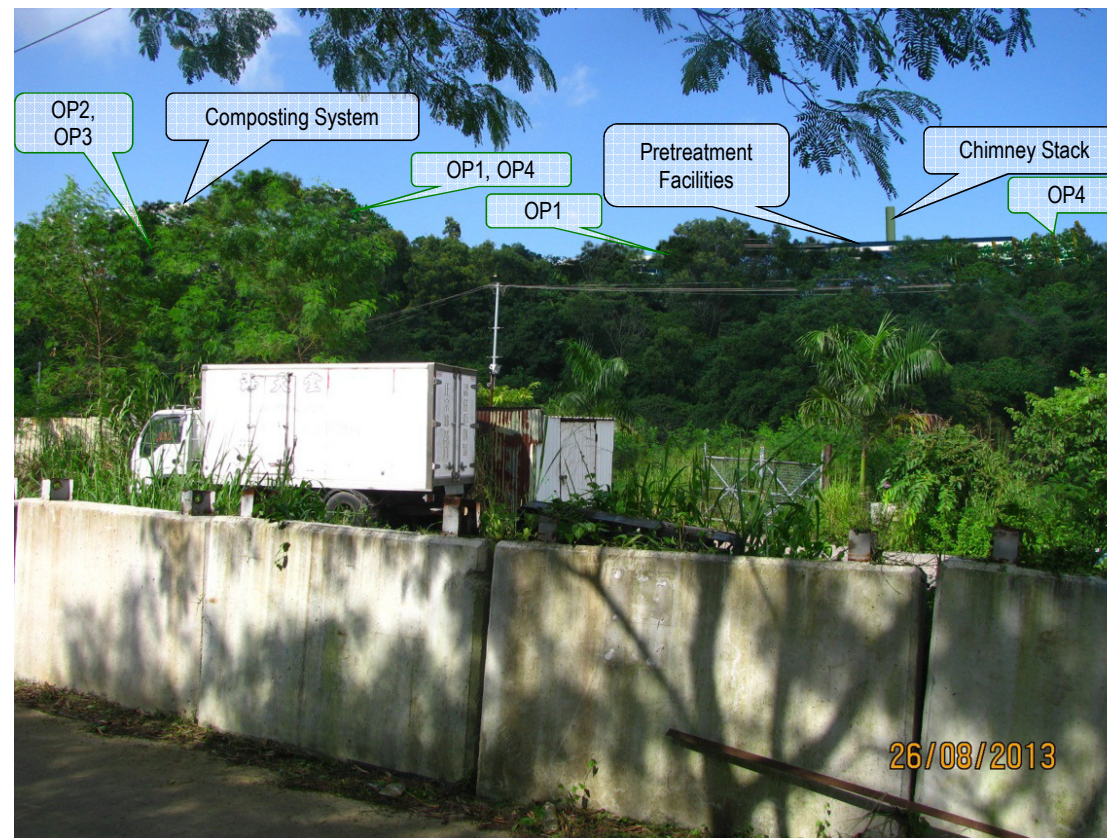
Existing View



Day 1 of Operation Phase without Landscape and Visual Mitigation Measures



Day 1 of Operation Phase with Landscape and Visual Mitigation Measures



Year 10 of Operation Phase with Landscape and Visual Mitigation Measures

Notes

- Key to symbols**
- CP1: Existing trees are retained whenever possible and protected during construction
 - CP2: The construction site activities are carefully controlled to minimize impact such as light, noise, tree felling and eyesores
 - CP3: Transplantation would be performed whenever possible
 - OP1: The location and layout of the proposed OWTF and associated facilities are designed in a way that has the lowest impact to the proposed site
 - OP2: Amenity / Compensatory planting will be utilized throughout the site
 - OP3: Planting will be added by man-made slopes to give a more natural appearance
 - OP4: Vertical and rooftop greening will maximize green space and soften hard structures

Reference drawings

--	--	--	--	--	--

P1	12	MING	FIRST ISSUE	LW	AFK
Rev	Date	Drawn	Description	Ch'kd	App'd

20/F Two Landmark East
100 How Ming Street
Kowloon, Kowloon
Hong Kong
T +852 2828 8757
F +852 2827 1823
W www.mottmac.com.hk

Client

Environmental Protection Department
The Government of the Hong Kong
Special Administrative Region

Project

AGREEMENT NO. CE34/2011(EP)
DEVELOPMENT OF ORGANIC WASTE
TREATMENT FACILITIES PHASE II -
FEASIBILITY STUDY

Title

PHOTOMONTAGE – VANTAGE
POINT FROM VSR3.5 –
VILLAGERS FROM THE WEST

Designed	LW	Eng check	JC
Drawn	MING	Coordination	BL
Dwg check	LW	Approved	AFK
Scale at A1	Status	Rev	
1:2500	PRE	P1	
Drawing Number	FIGURE 10.12d		