

Project: Development of Anderson Road Quarry - Investigation  
Scenario: 2017  
Title: Hourly Vehicular Emission Factors of RSP (g/mile/hr) - from Open Road

Table with columns: Road Segment, x-start, y-start, x-end, y-end, Road Length (m), Hour 00 to Hour 23. Each hour column contains 11 sub-columns for Flow, Emf, Flow, Emf, Flow, Emf, Flow, Emf, Flow, Emf, Flow, Emf.

Project: Development of Anderson Road Quarry - Investigation  
Scenario: 2017  
Title: Hourly Vehicular Emission Factors of RSP (g/mile/hr) - from Open Road

Table with columns for Road Segment, x-start, y-start, x-end, y-end, Road Length (m), and 24 columns for Hourly Emission (Hour 00 to Hour 23). Each row represents a specific road segment and its associated hourly emission data for various pollutants.



Project: Development of Anderson Road Quarry - Investigation  
Scenario: 2017

Title: Hourly Vehicle Emission Factors of RSP (g/mile/hr) - from Open Road

Table with 144 columns: Road Segment, x-start, x-end, Road Length (m), Hour 00 (Flow, Emf), Hour 01 (Flow, Emf), Hour 02 (Flow, Emf), Hour 03 (Flow, Emf), Hour 04 (Flow, Emf), Hour 05 (Flow, Emf), Hour 06 (Flow, Emf), Hour 07 (Flow, Emf), Hour 08 (Flow, Emf), Hour 09 (Flow, Emf), Hour 10 (Flow, Emf), Hour 11 (Flow, Emf), Hour 12 (Flow, Emf), Hour 13 (Flow, Emf), Hour 14 (Flow, Emf), Hour 15 (Flow, Emf), Hour 16 (Flow, Emf), Hour 17 (Flow, Emf), Hour 18 (Flow, Emf), Hour 19 (Flow, Emf), Hour 20 (Flow, Emf), Hour 21 (Flow, Emf), Hour 22 (Flow, Emf), Hour 23 (Flow, Emf). Rows contain numerical data for various road segments and hours.







Project: Development of Anderson Road Quarry - Investigation  
Scenario: 2017

Title: Hourly Vehicular Emission Factors of FSP (g/mile/hr) - from Open Road

Table with columns: Road Segment, x-start, y-start, x-end, y-end, Road Length (m), Hour 00 to Hour 23. Each hour column contains sub-columns for Flow, Emf, and Flow. The table contains 97 rows of data, each representing a road segment with its specific emission factors for each hour of the day.



Project: Development of Anderson Road Quarry - Investigation
Scenario: 2017
Title: Hourly Vehicular Emission Factors of FSP (g/mile/hr) - from Open Road

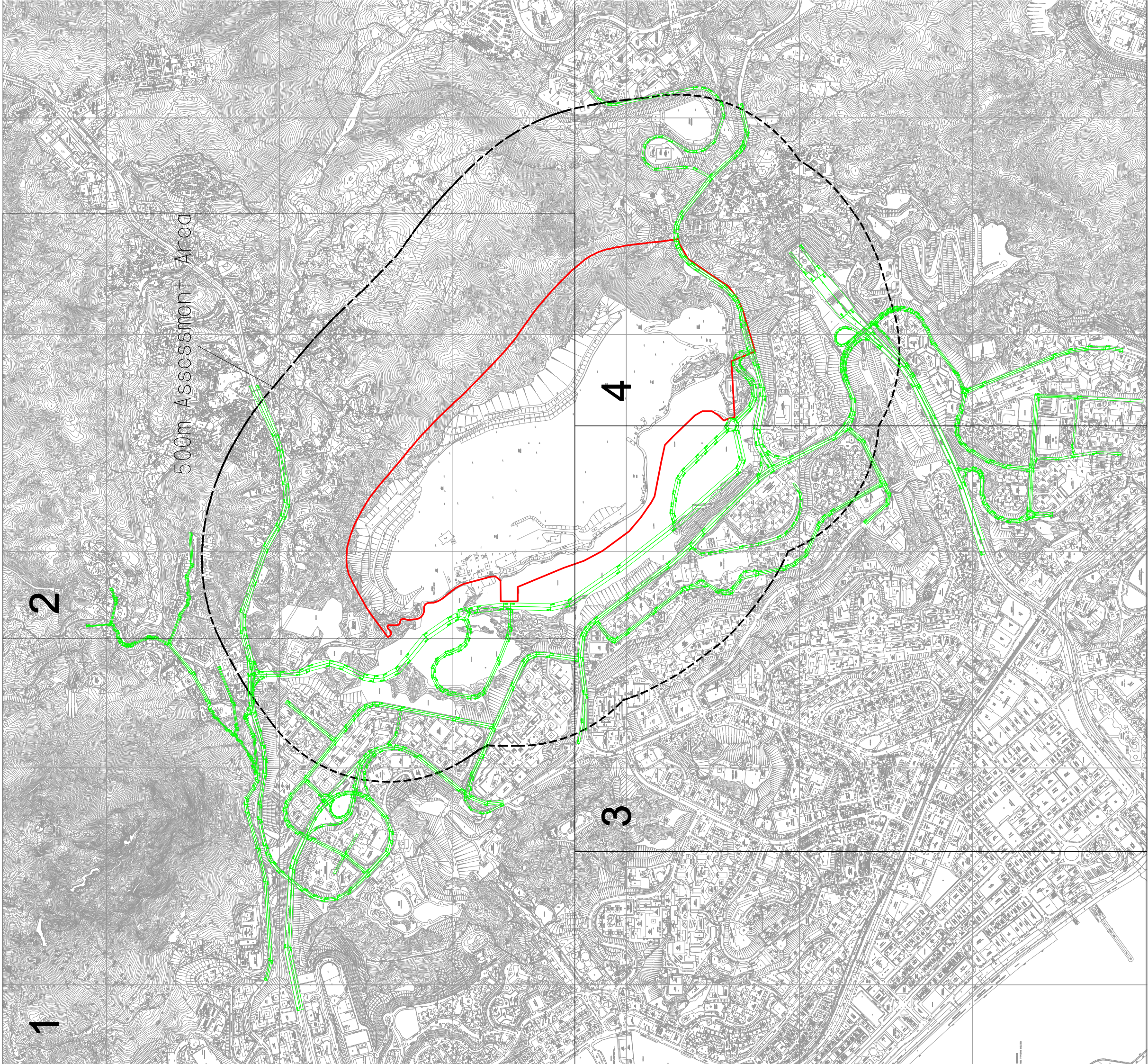
Table with columns for Road Segment, x-start, x-end, y-start, y-end, Road Length (m), and 24 columns for Hour 00 through Hour 23. Each cell contains numerical values representing emission factors for different pollutants.

Project: Development of Anderson Road Quarry - Investigation  
Scenario: 2017  
Title: Hourly Vehicle Emission Factors of F<sub>3P</sub> (g/mile/hr) - from Open Road

Road Segment	x-start	y-start	x-end	y-end	Road Length (m)	Hour 00		Hour 01		Hour 02		Hour 03		Hour 04		Hour 05		Hour 06		Hour 07		Hour 08		Hour 09		Hour 10		Hour 11		Hour 12		Hour 13		Hour 14		Hour 15		Hour 16		Hour 17		Hour 18		Hour 19		Hour 20		Hour 21		Hour 22		Hour 23			
						Flow	Emf	Flow	Emf	Flow	Emf	Flow	Emf	Flow	Emf	Flow	Emf	Flow	Emf	Flow	Emf	Flow	Emf	Flow	Emf	Flow	Emf	Flow	Emf	Flow	Emf	Flow	Emf	Flow	Emf	Flow	Emf	Flow	Emf	Flow	Emf	Flow	Emf	Flow	Emf	Flow	Emf	Flow	Emf	Flow	Emf	Flow	Emf	Flow	Emf
						1	2	1	2	1	2	1	2	1	2	1	2	1	2	1	2	1	2	1	2	1	2	1	2	1	2	1	2	1	2	1	2	1	2	1	2	1	2	1	2	1	2	1	2	1	2	1	2	1	2
1951	842455	820022	842501	819973	67	29	0.0543	18	0.0664	13	0.0747	10	0.0283	10	0.0266	16	0.0735	34	0.0522	72	0.0758	73	0.0754	73	0.0751	64	0.0786	61	0.0810	62	0.0808	59	0.0735	61	0.0810	66	0.0791	69	0.0768	70	0.0767	69	0.0768	60	0.0724	49	0.0789	45	0.0818	45	0.0836	39	0.0883		







1

2

3

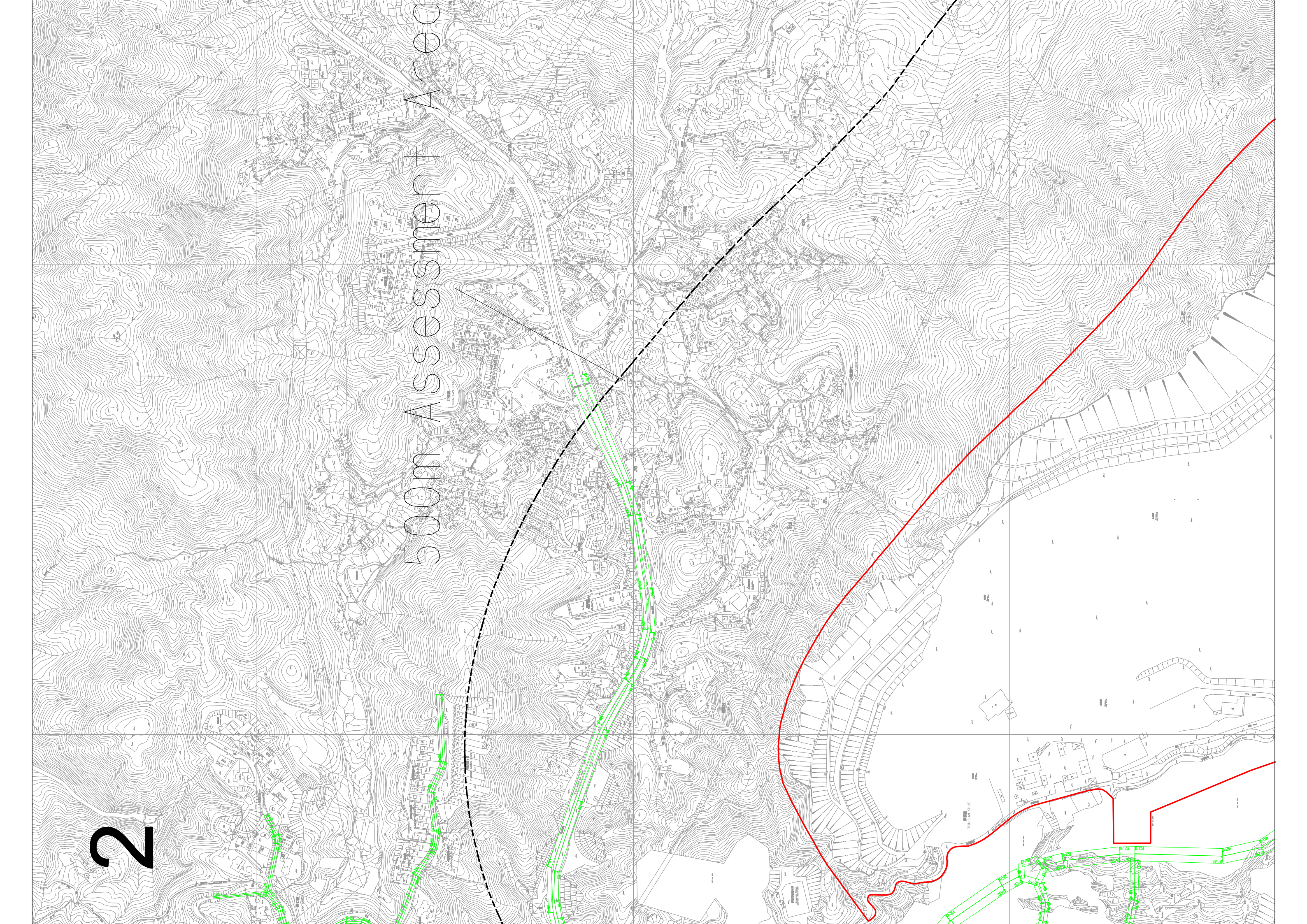
4

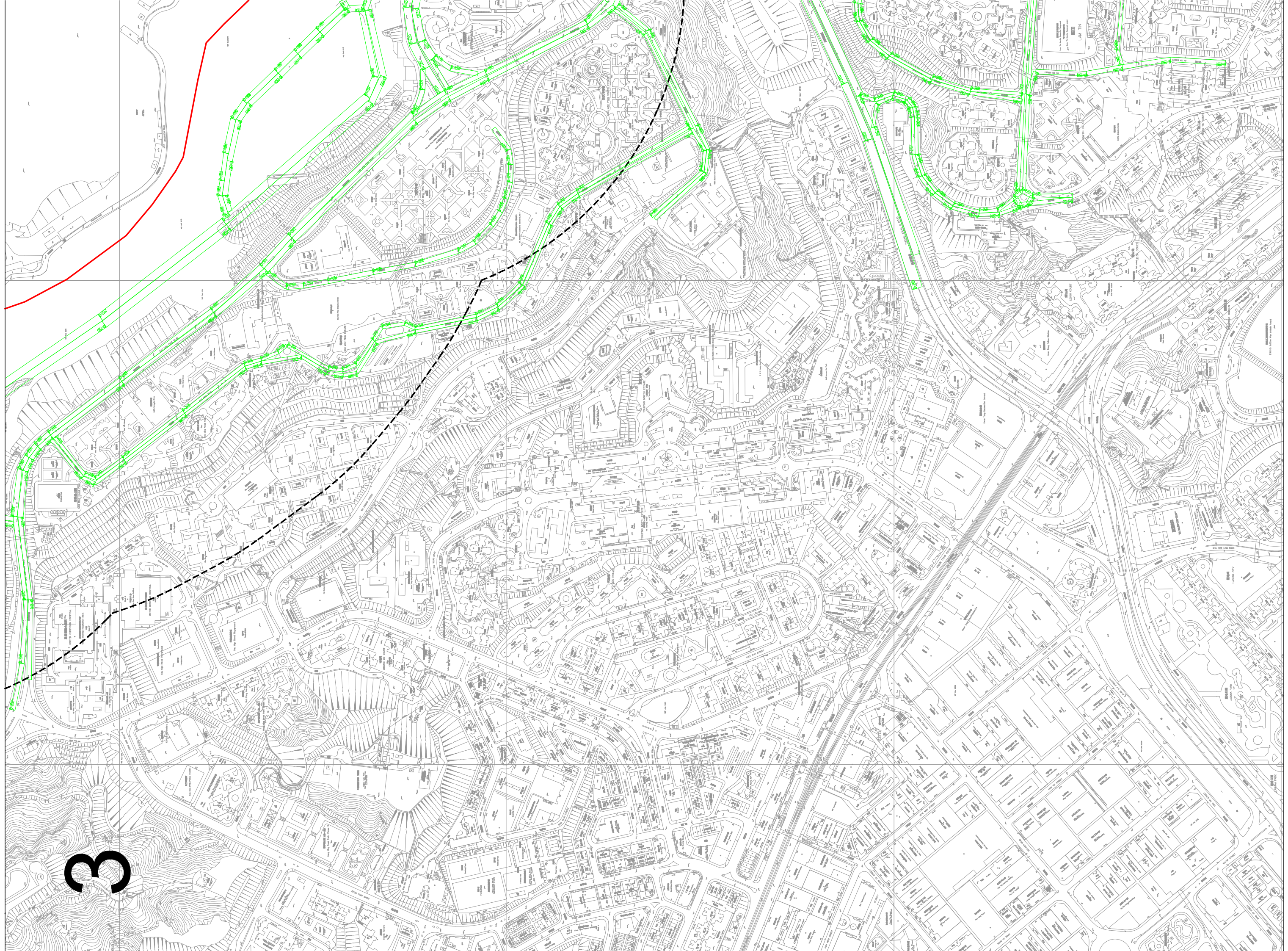
500m Assessment Area



2

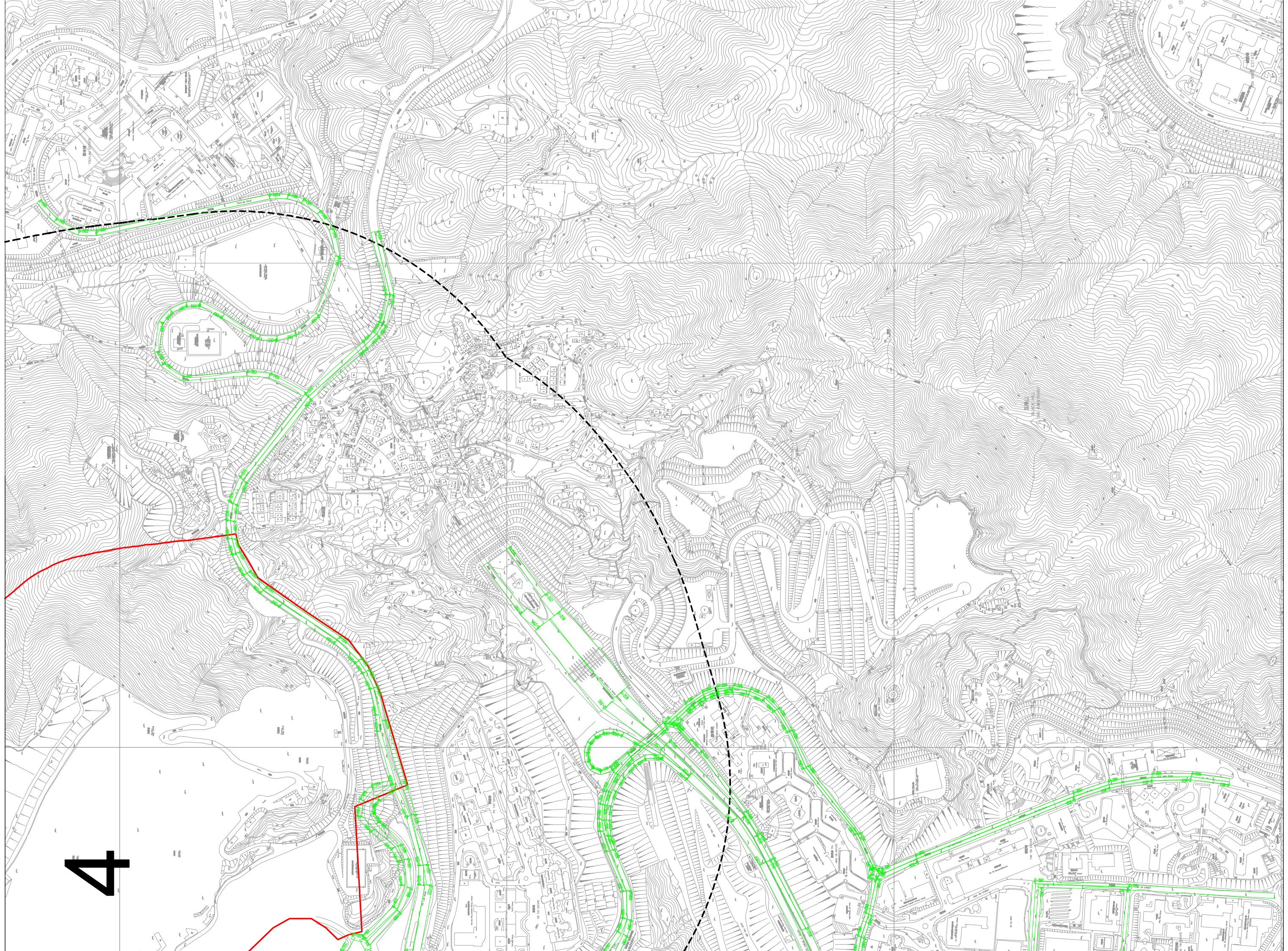
500m Assessment Area





3





4