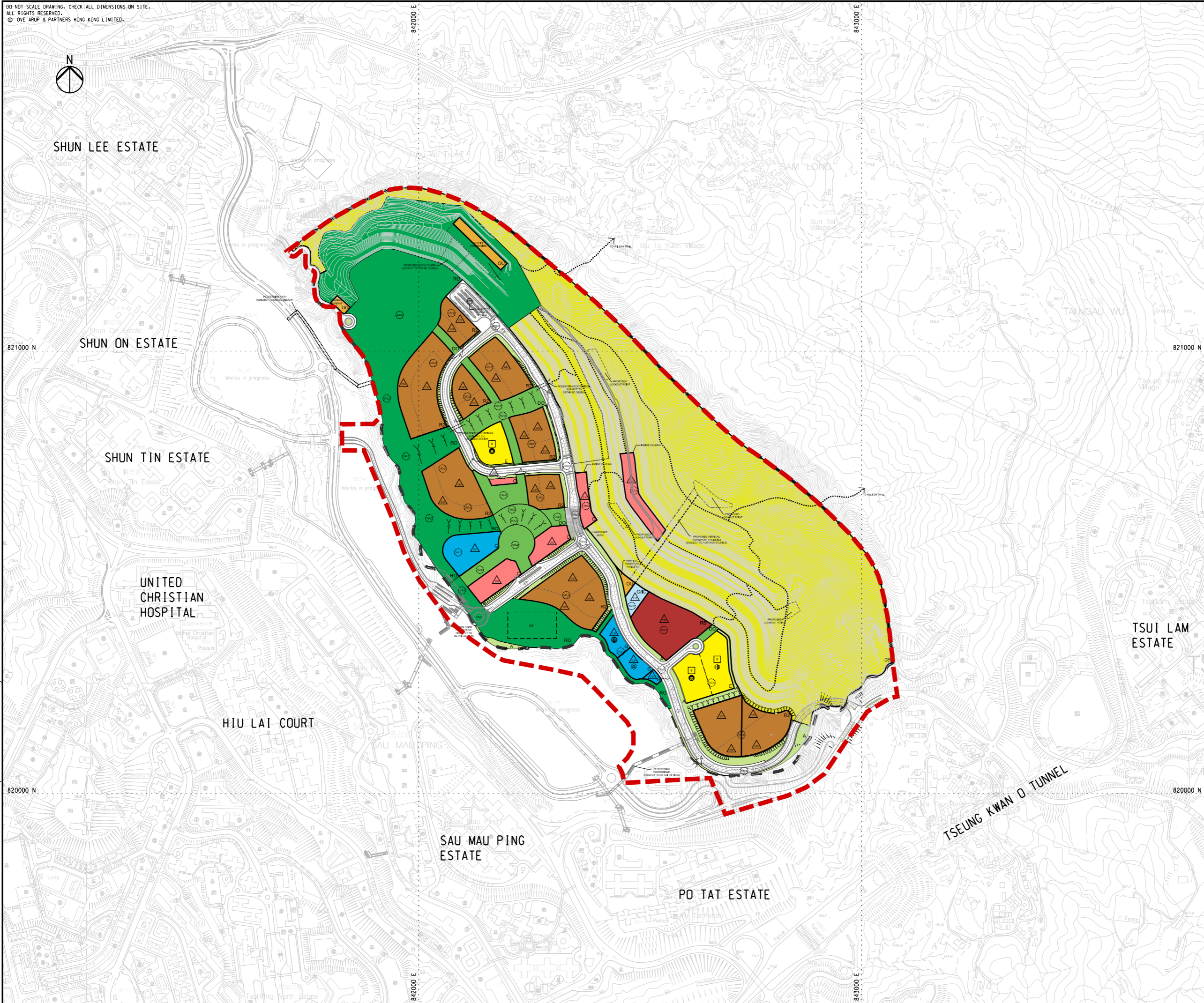


DO NOT SCALE DRAWING. CHECK ALL DIMENSIONS ON SITE.  
 ALL RIGHTS RESERVED.  
 © OVE ARUP & PARTNERS HONG KONG LIMITED.



LEGEND	
	PROPOSED STUDY AREA
	POLICE STATION
	DIVISIONAL FIRE STATION
	SECONDARY SCHOOL
	PRIMARY SCHOOL
	PUBLIC TRANSPORT TERMINUS
	PLANNING BOUNDARY
	ZONING BOUNDARY
	TUNNEL
	PROPOSED PEDESTRIAN TRAIL
	PEDESTRIAN PRECINCT
	DRAINAGE RESERVE
	MAXIMUM BUILDING HEIGHT (In m above PD)
	MAXIMUM BUILDING HEIGHT (In storeys)
	PROPOSED LEVEL (In m above PD)
	PROPOSED SLOPE
	REFUSE COLLECTION POINT
	FOOTBRIDGE
	COMMERCIAL
	SPECIAL RESIDENTIAL
	RESIDENTIAL ZONE-2
	GOVERNMENT
	GOVERNMENT/INSTITUTION OR COMMUNITY
	EDUCATION
	REGIONAL OPEN SPACE
	DISTRICT OPEN SPACE
	AMENITY
	OTHER SPECIFIED USES
	GREEN BELT
	ROADS, JUNCTIONS, ETC.
	AREA WITH POTENTIAL FOR ROCK CAVERN DEVELOPMENT

A	FIRST ISSUE	YST	03/13
Rev	Description	By	Date

Consultant **ARUP**

Contract No. and Title  
 Agreement No. CE 18/2012(CE)  
 Development of Anderson Road Quarry - Investigation

Drawing title  
**RECOMMENDED OUTLINE DEVELOPMENT PLAN**

Drawing no.	227724/L/2100	Rev.	A
Drawn	RY	Date	03/13
Checked	CL	Approved	SYC
Scale	1:8000 @A3	Status	PRELIMINARY

COPYRIGHT RESERVED  
 土木工程拓展署  
 Civil Engineering and Development Department

Printed by : 14/03/2014  
 Filename : J:\227724\ARUP\Civil\Sketch\VSR Report\227724\_L\_2100.dgn