



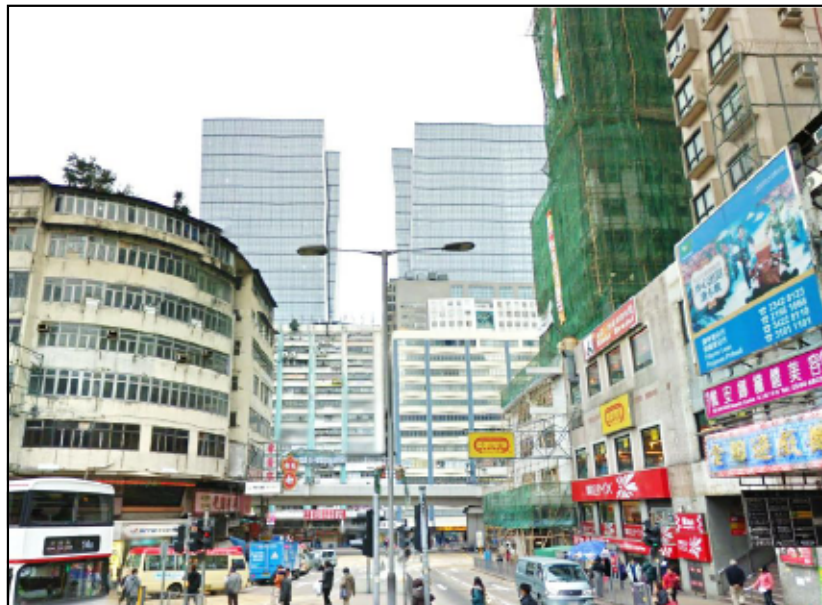
R2.12 RICHLAND GARDEN



C12.1 COMMERCIAL AND INDUSTRIAL DEVELOPMENTS
 IN KWUN TONG BUSINESS AREA



G1C2.2 THE CHURCH OF CHRIST IN CHINA KEI FAAT
 PRIMARY SCHOOL



RC2.1 PLANNED REDEVELOPMENT OF KWUN TONG TOWN CENTRE



C12.2 MIX USE OF COMMERCIALS AND INDUSTRIALS
 AT KOWLOON BAY INDUSTRIAL ZONE



G1C2.3 GOVERNMENT AND COMMUNITY OFFICES
 ALONG TSUI PING ROAD



RC2.2 RESIDENTIAL AND COMMERCIAL
 DEVELOPMENTS IN KOWLOON CITY



G1C2.1 DELIA MEMORIAL SCHOOL



G1C2.4 ST. EDWARD'S CATHOLIC PRIMARY SCHOOL

Rev	Description	By	Date
A	FIRST ISSUE	TST	03/12

Consultant
ARUP

Contract No. and Title
 Agreement No. CE 18/2012(CE)
 Development of
 Anderson Road Quarry -
 Investigation

Drawing title
 PHOTO OF KEY VISUAL
 SENSITIVE RECEIVERS
 (SHEET 7 OF 14)

Drawing no.		227724/L/2510		Rev.	-
Drawn	Date	Checked	Approved		
CN	03/13	CL	SYC		
Scale	N. T. S.	Status	PRELIMINARY		

COPYRIGHT RESERVED



土木工程拓展署
 Civil Engineering and
 Development Department