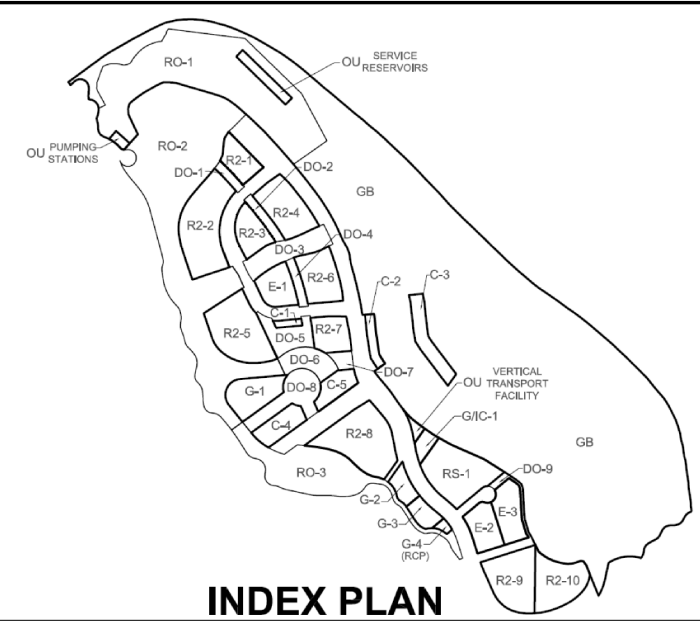
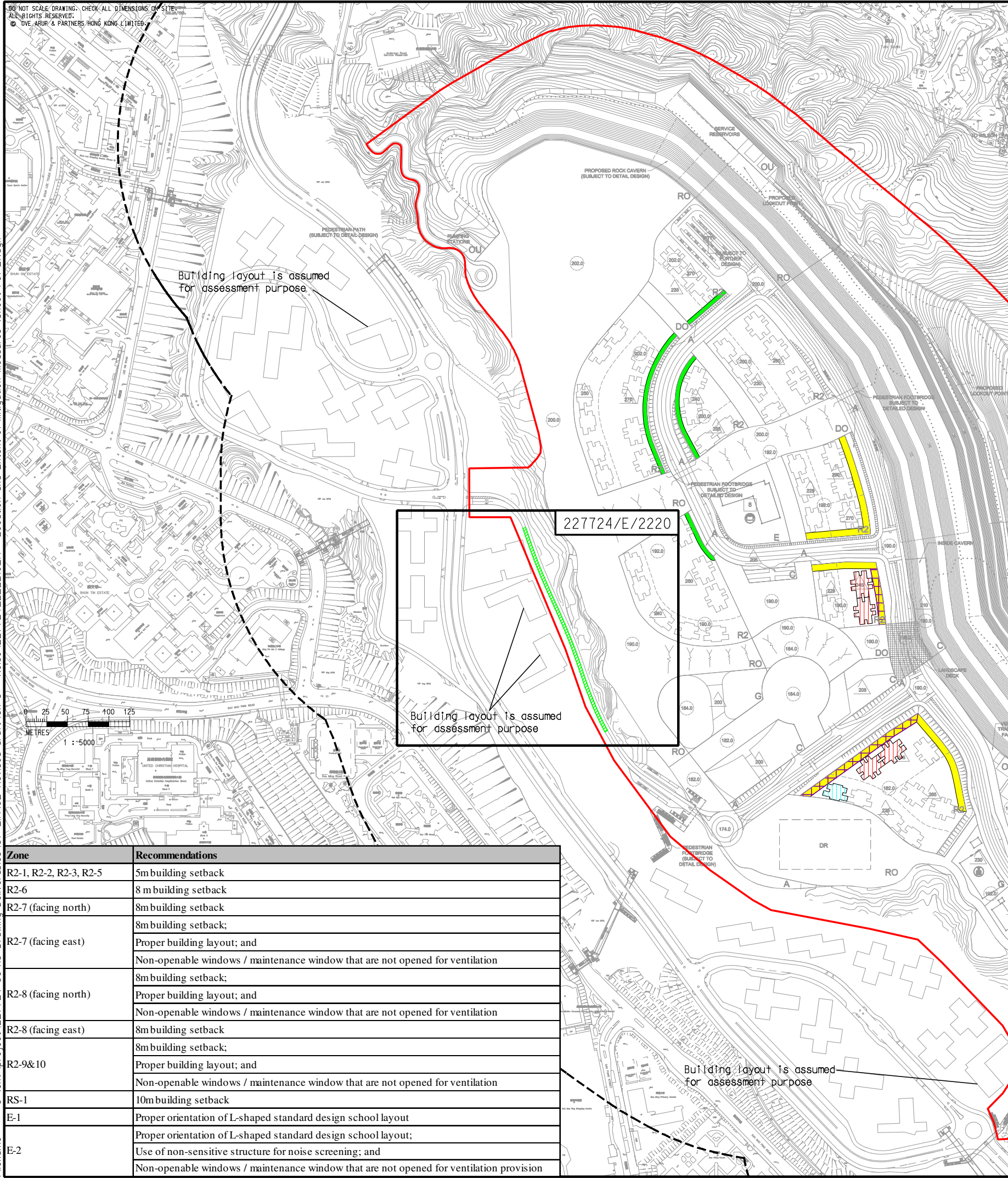


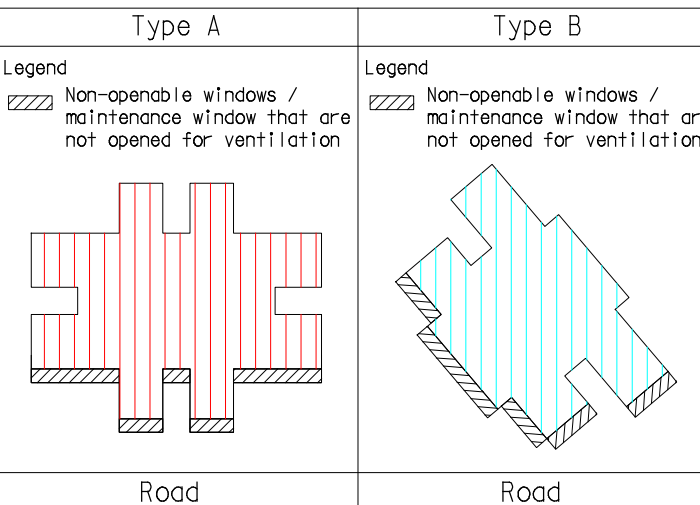
DO NOT SCALE DRAWING. CHECK ALL DIMENSIONS ON SITE.
 ALL RIGHTS RESERVED.
 © OVE ARUP & PARTNERS HONG KONG LIMITED

3/24/2014 G:\env\project\227724-50\13 Drawing Deliverables\07 EIA\02 Revised draft\Ch 5 - Noise\227724-E-2210-A - Location and Extent of Mitigation Measures (Sheet 1 of 2).dgn



INDEX PLAN

Typical Building Block Requiring Non-openable windows / maintenance window that are not opened for ventilation



- Legend**
- Study Area
 - 300m Assessment Area
 - Semi-Enclosure
 - 5m Setback
 - 8m Setback
 - 10m Setback
 - Non-openable windows / maintenance window that are not opened for ventilation
 - Non-Sensitive Structure

Zone	Recommendations
R2-1, R2-2, R2-3, R2-5	5m building setback
R2-6	8 m building setback
R2-7 (facing north)	8m building setback
R2-7 (facing east)	8m building setback; Proper building layout; and Non-openable windows / maintenance window that are not opened for ventilation
R2-8 (facing north)	8m building setback; Proper building layout; and Non-openable windows / maintenance window that are not opened for ventilation
R2-8 (facing east)	8m building setback 8m building setback; Proper building layout; and Non-openable windows / maintenance window that are not opened for ventilation
R2-9&10	Proper building layout; and Non-openable windows / maintenance window that are not opened for ventilation
RS-1	10m building setback
E-1	Proper orientation of L-shaped standard design school layout
E-2	Proper orientation of L-shaped standard design school layout; Use of non-sensitive structure for noise screening; and Non-openable windows / maintenance window that are not opened for ventilation provision

A FIRST ISSUE		GL	10/13
Rev	Description	By	Date
ARUP			
Contract No. and Title			
Agreement No. CE 18/2012(CE)			
Development of Anderson Road Quarry - Investigation			
Drawing title			
Location and Extent of Mitigation Measures (Sheet 1 of 2)			
Drawing no. 227724/E/2210		Rev. A	
Drawn	Date	Checked	Approved
GL	10/13	TC	ST
Scale	1:5000 @A3	Status	PRELIMINARY
COPYRIGHT RESERVED			
土木工程拓展署 Civil Engineering and Development Department			