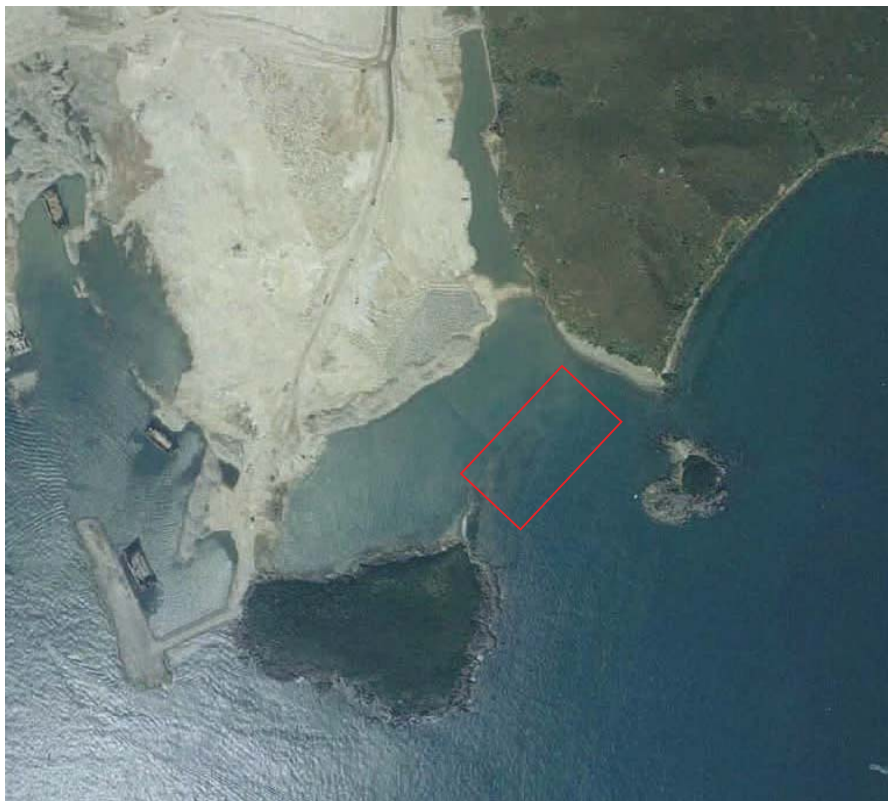


 Approximate Site Boundary



Year 1998 (ref: CN21155, height: 4,000ft) — Between 1995 and 1998, the reclamation work was extended towards south . Most of the public fill can be observed, but the TMS Site was still part of the sea.



Year 2000 (ref: CN27340, height: 4,000ft) — The reclamation work already extended to cover the TMS Site. TMS Site was vacant and surrounded by construction work of road networks. A concrete jetty was observed.

Revision	Date	Description	Initial
		Designed	Checked
		Checked	Drawn
		Drawn	Checked
Initial			
Date			

Agreement No.  
CE 21/2012 (WS)

Contract title  
**DESALINATION PLANT AT TSEUNG KWAN O - FEASIBILITY STUDY**

Drawing title  
REFERENCED AERIAL PHOTOGRAPHS

Drawing no. FIGURE 8A.2b	Revision
-----------------------------	----------

Scale



BLACK & VEATCH HONG KONG LIMITED  
博威工程顧問有限公司