

Desalination Plant at Tseung Kwan O – Feasibility Study  
 Operation Phase Saline Discharge – Maximum Depth-averaged Iron  
 Top: Dry Season; Bottom: Wet Season (Allowed Elevation = 0.11 mg/L)

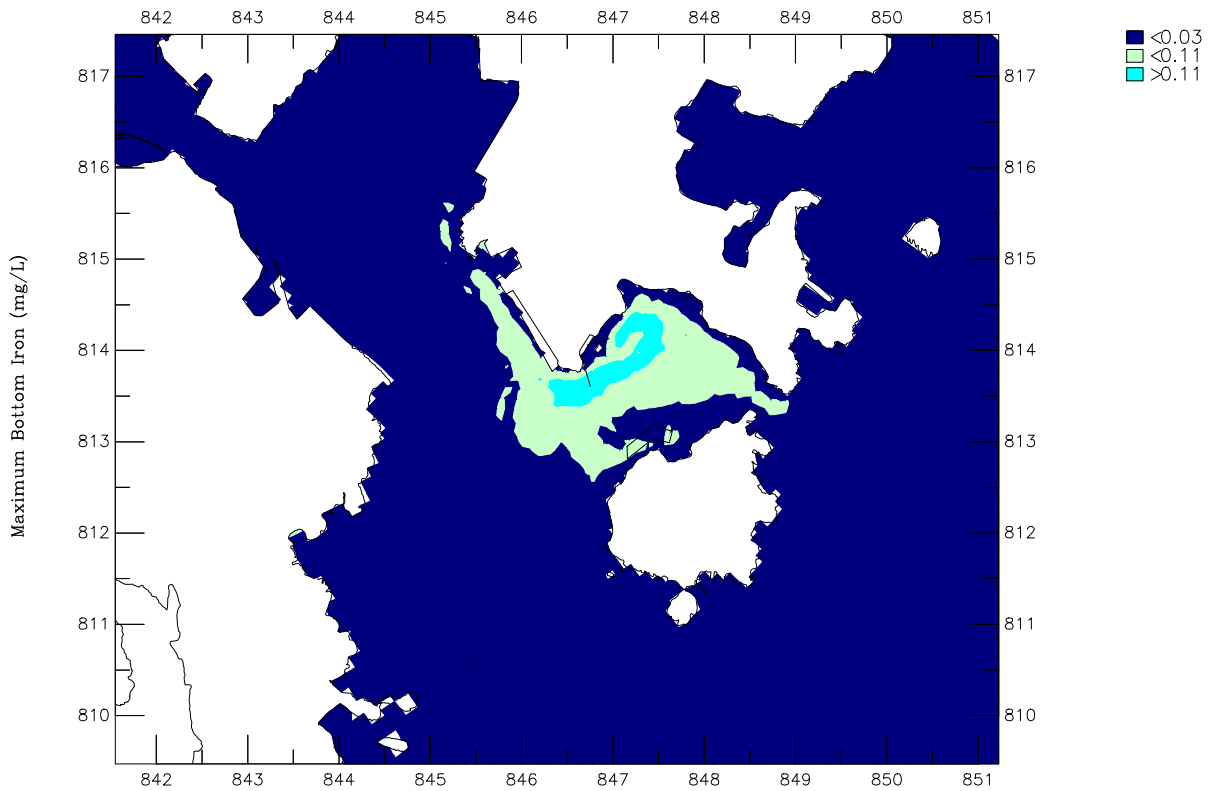
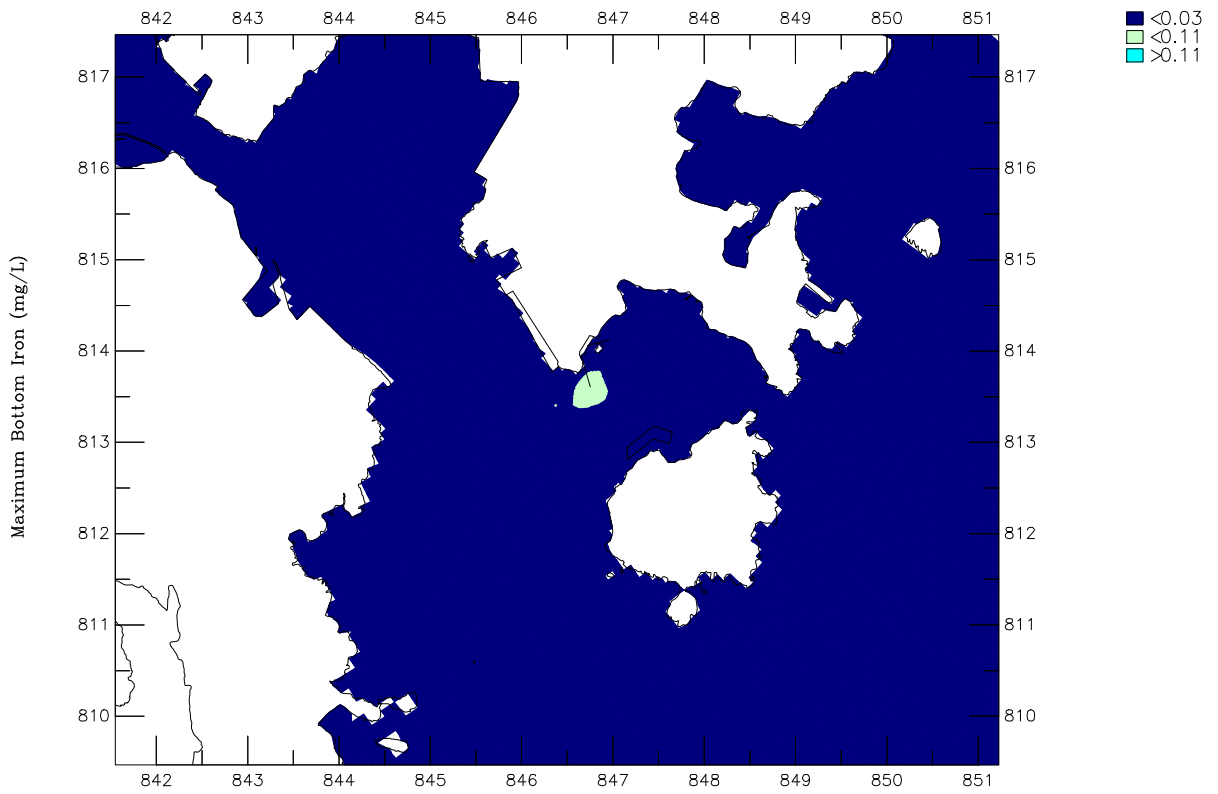
Year 2020

Annex 6E-1

ERM HK Limited

0189570/GPP

SalineDischarge.ssn



Desalination Plant at Tseung Kwan O – Feasibility Study  
 Operation Phase Saline Discharge – Maximum Bottom Iron  
 Top: Dry Season; Bottom: Wet Season (Allowed Elevation = 0.11 mg/L)

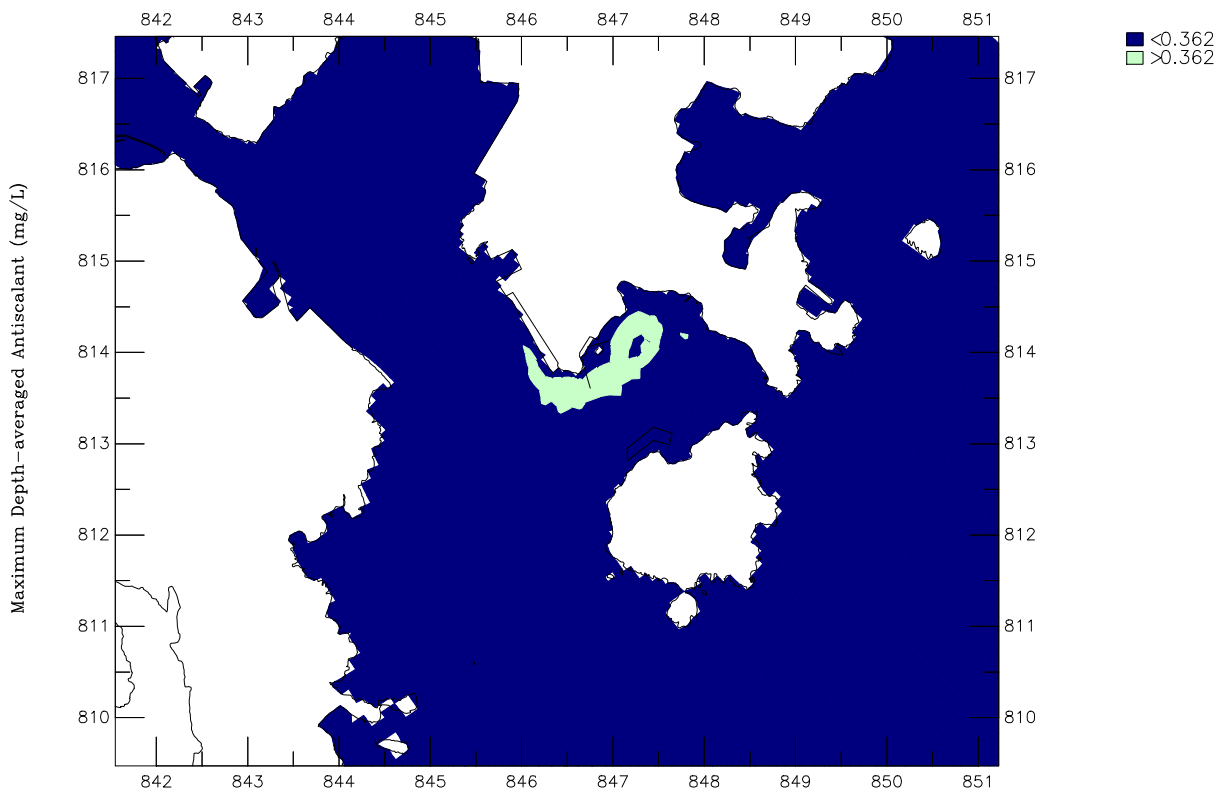
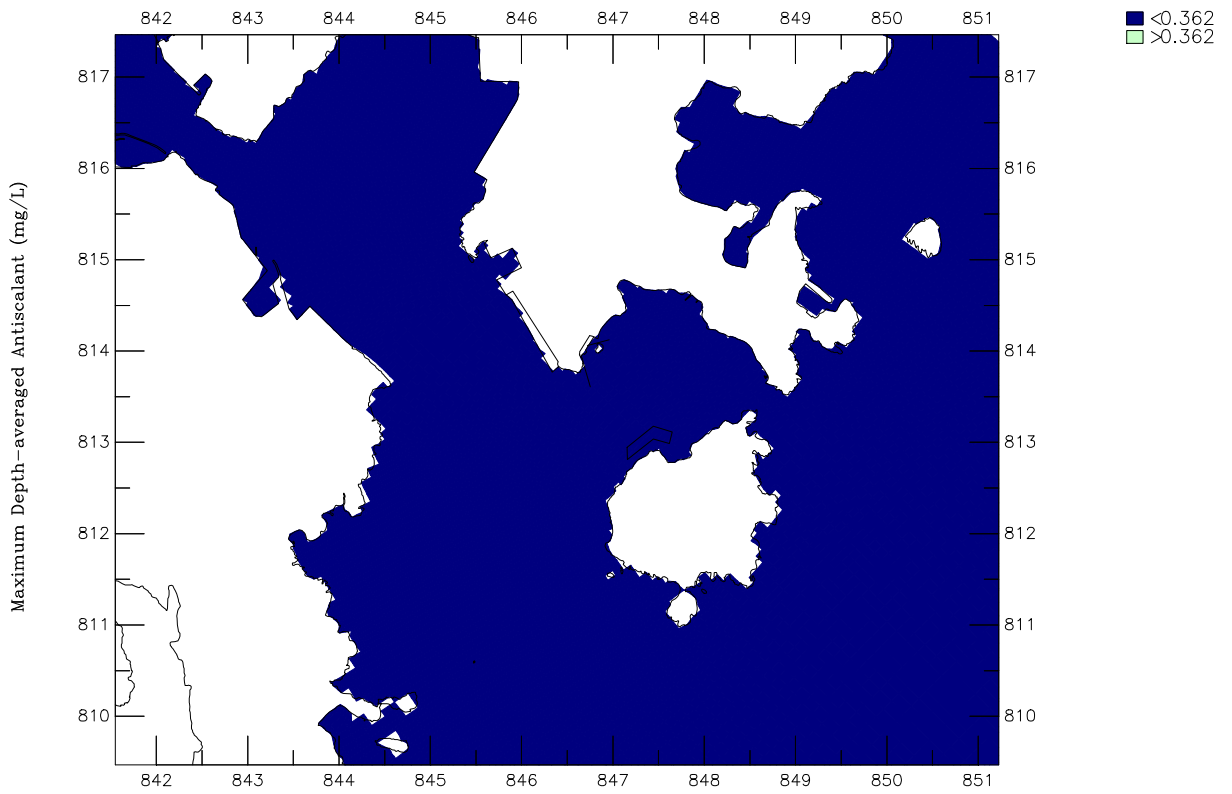
Year 2020

Annex 6E-1a

ERM HK Limited

0189570/GPP

SalineDischarge.ssn



Desalination Plant at Tseung Kwan O – Feasibility Study  
 Operation Phase Saline Discharge – Maximum Depth-averaged Antiscalant  
 Top: Dry Season; Bottom: Wet Season (Allowed Elevation = 0.362 mg/L)

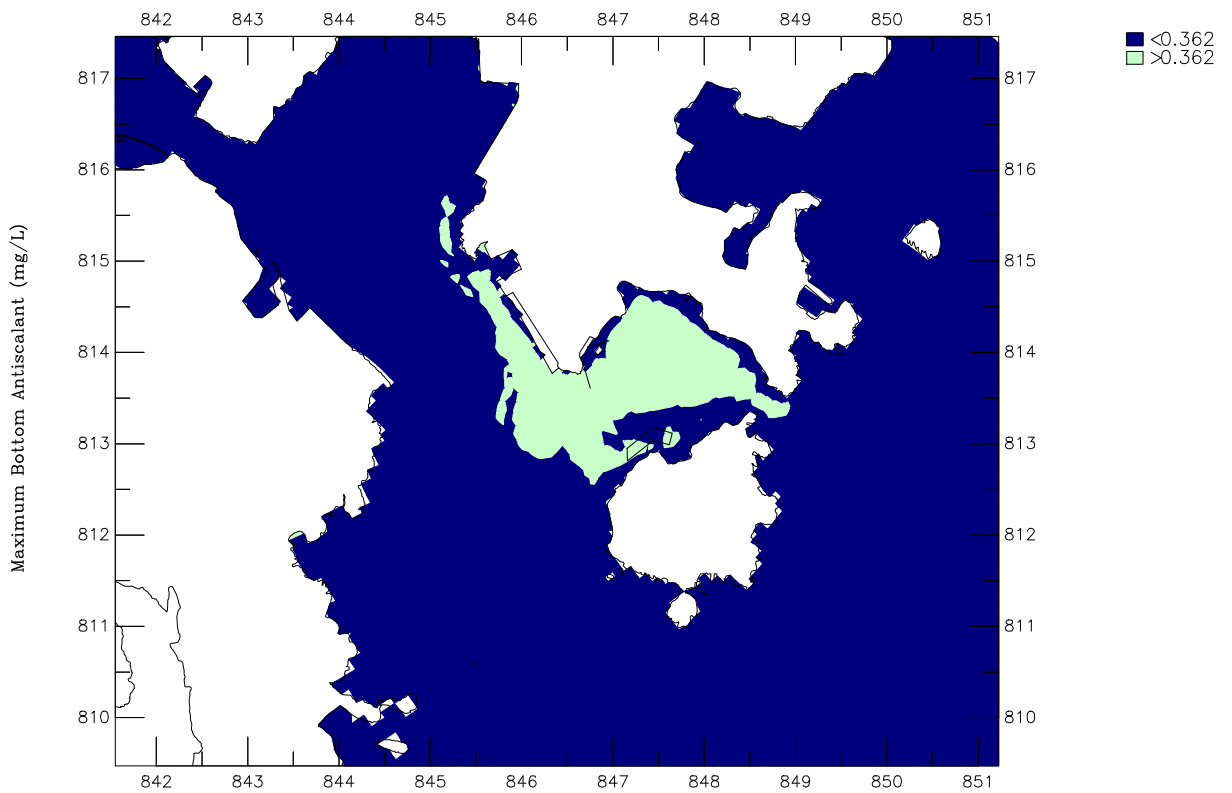
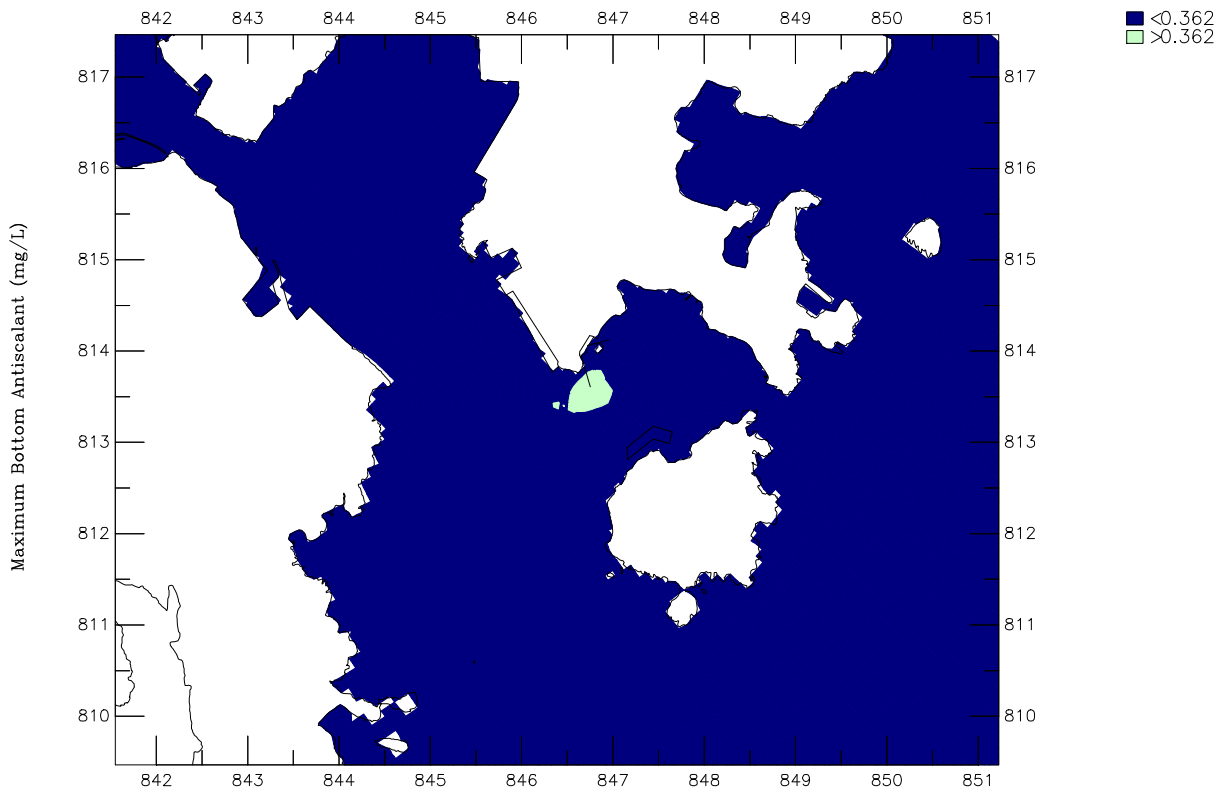
Year 2020

Annex 6E-2

ERM HK Limited

0189570/GPP

SalineDischarge.ssn



Desalination Plant at Tseung Kwan O – Feasibility Study  
 Operation Phase Saline Discharge – Maximum Bottom Antiscalant  
 Top: Dry Season; Bottom: Wet Season (Allowed Elevation = 0.362 mg/L)

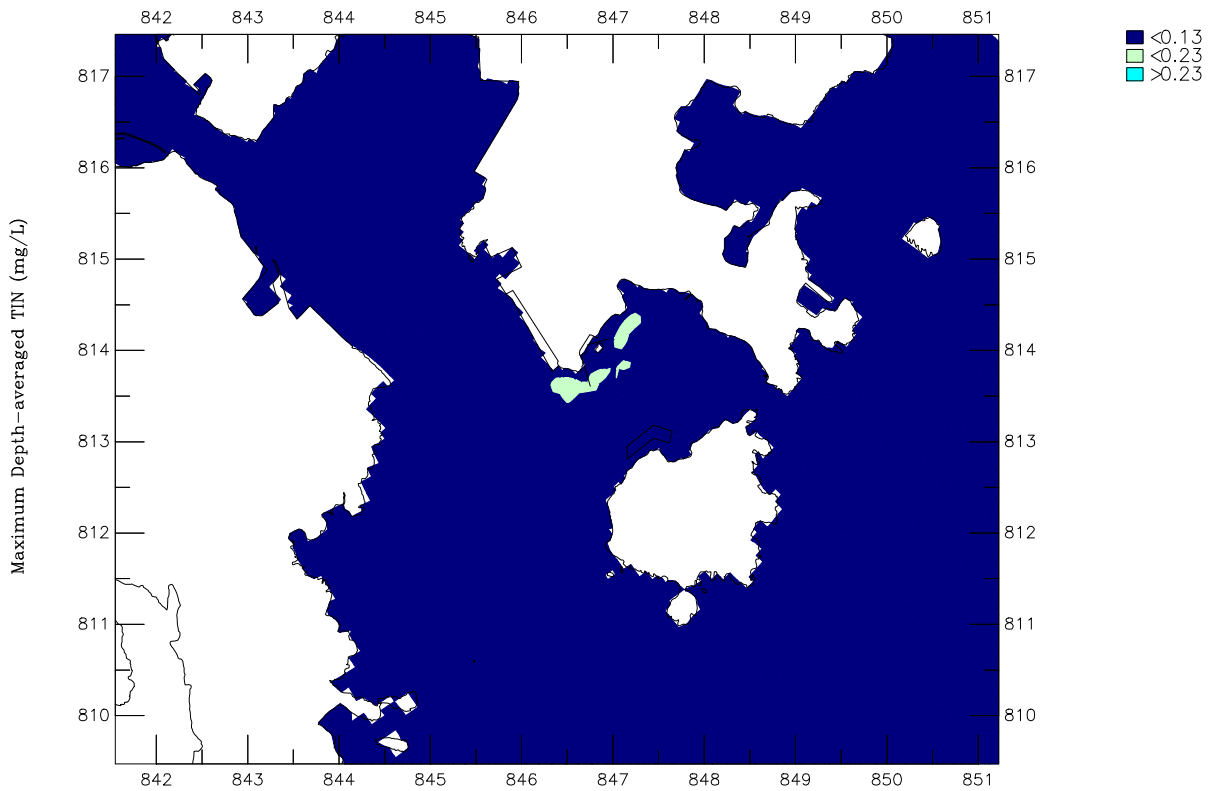
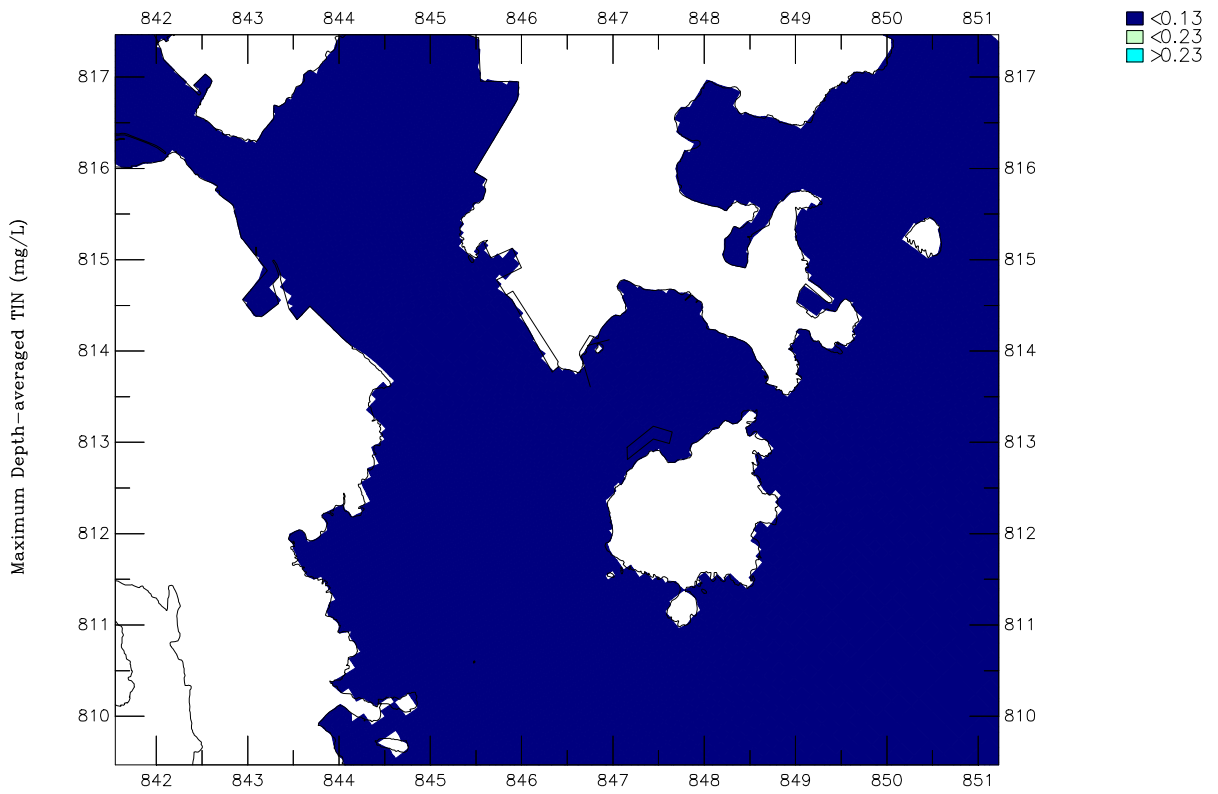
Year 2020

Annex 6E-2a

ERM HK Limited

0189570/GPP

SalineDischarge.ssn



Desalination Plant at Tseung Kwan O – Feasibility Study

Operation Phase Saline Discharge – Maximum Depth-averaged TIN

Top: Dry Season; Bottom: Wet Season (Allowed Elevation = 0.23 mg/L for the Eastern Buffer)

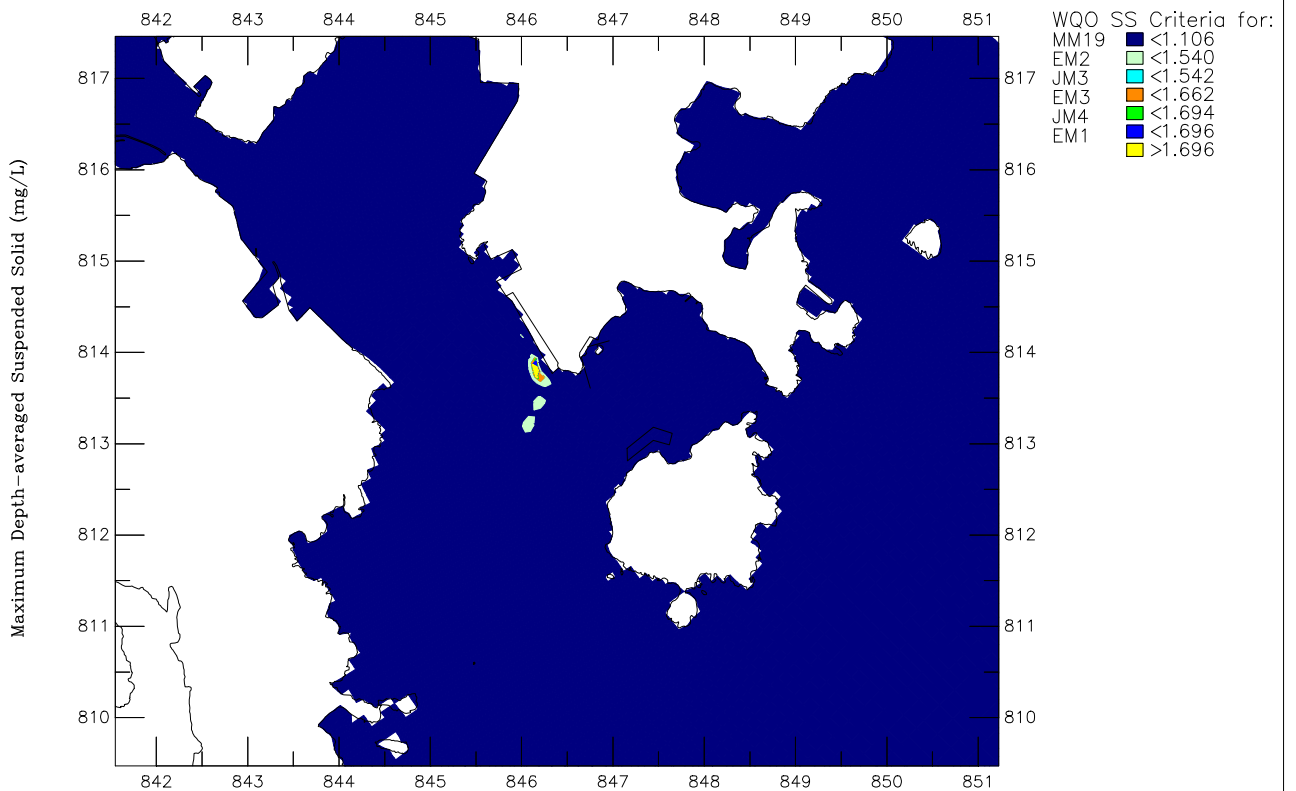
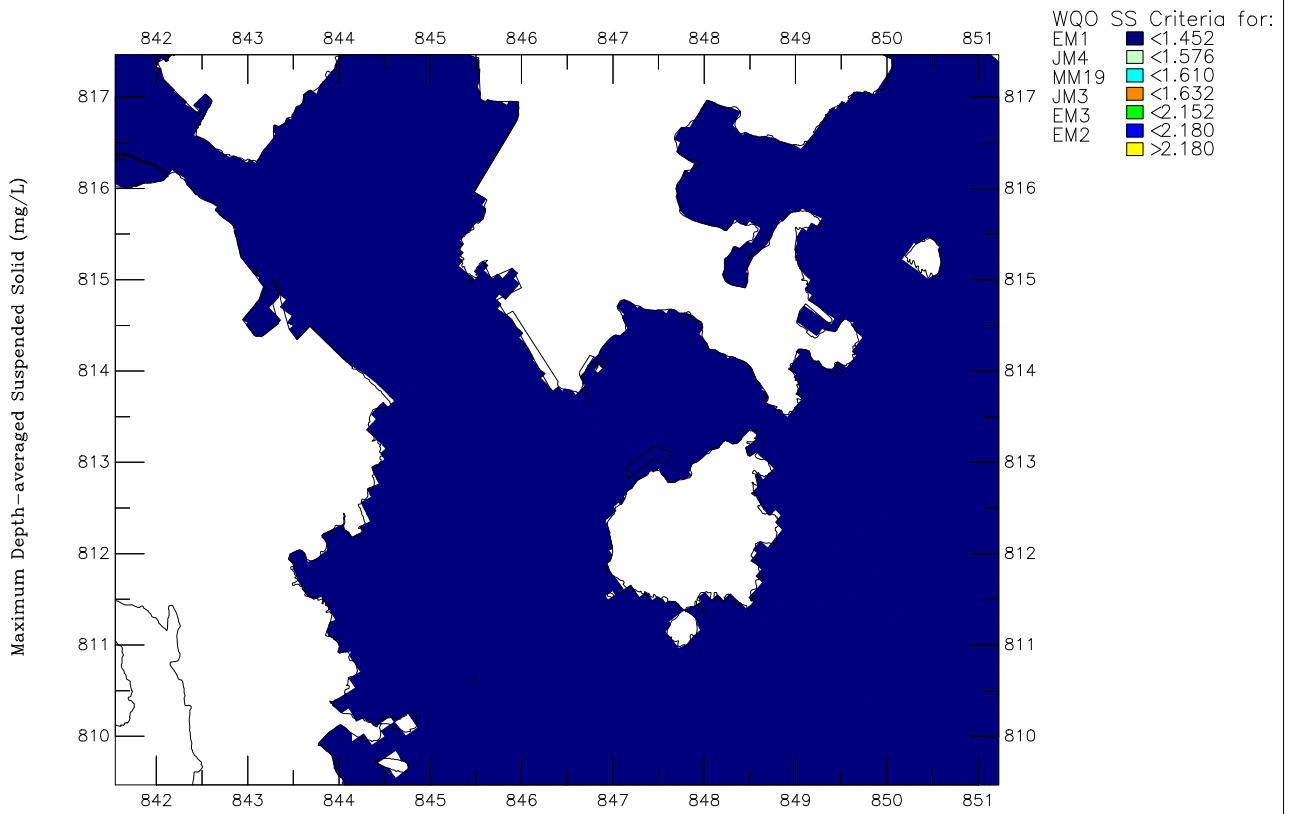
Year 2020

Annex 6E-3

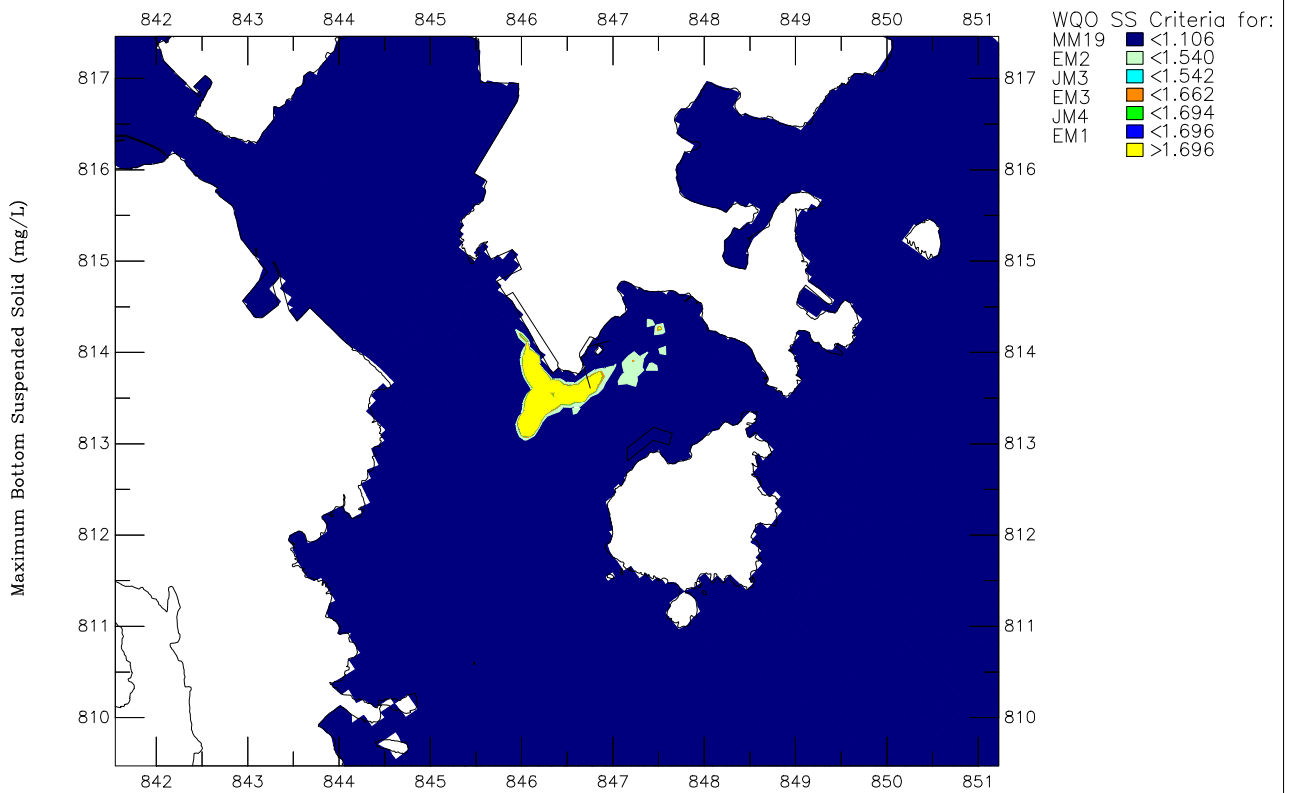
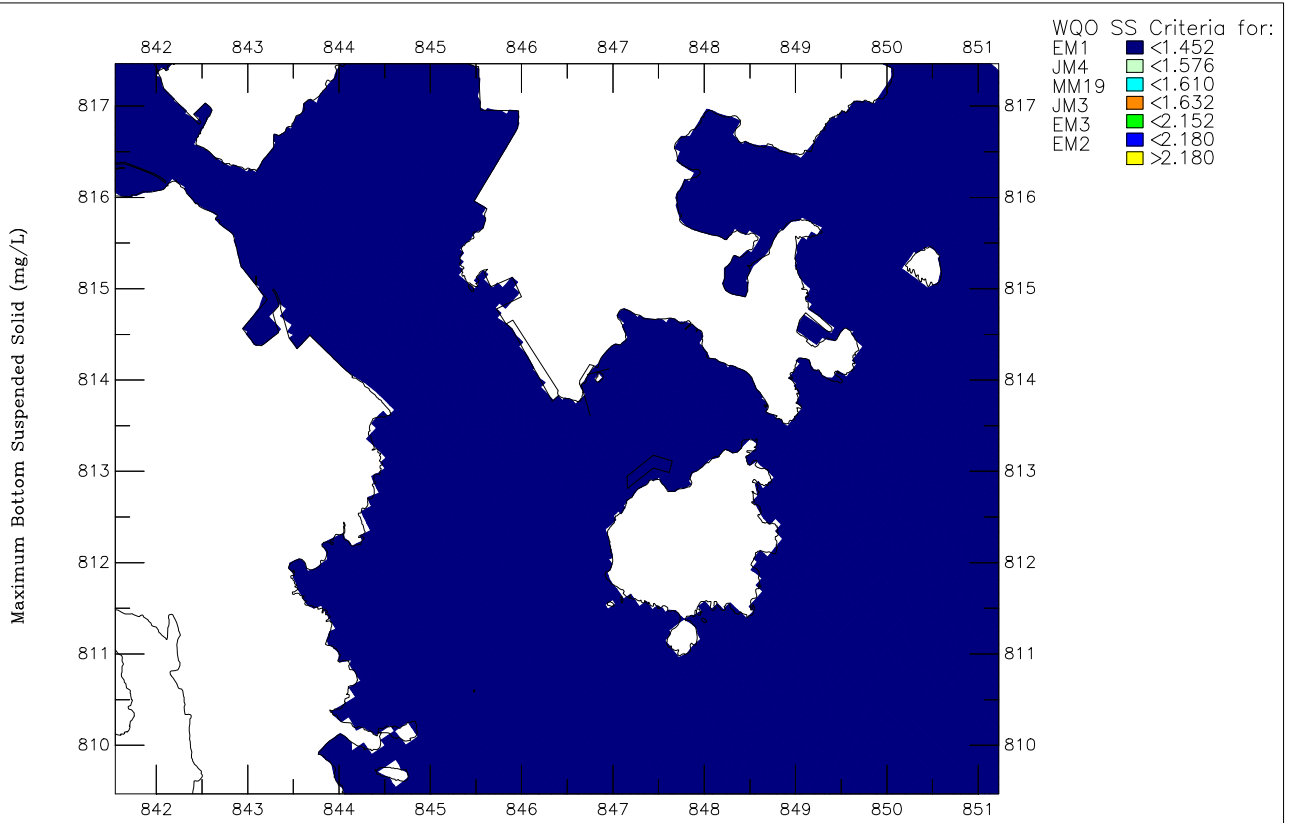
ERM HK Limited

0189570/GPP

SalineDischarge.ssn



Desalination Plant at Tseung Kwan O – Feasibility Study Operation Phase Saline Discharge – Maximum Depth-averaged Suspended Solid Top: Dry Season; Bottom: Wet Season (Criteria = 30% above ambient)	Year 2020	
	Annex 6E-4	
ERM HK Limited	0189570/GPP	SalineDischarge.ssn



Desalination Plant at Tseung Kwan O – Feasibility Study  
 Operation Phase Saline Discharge – Maximum Bottom Suspended Solid  
 Top: Dry Season; Bottom: Wet Season (Criteria = 30% above ambient)

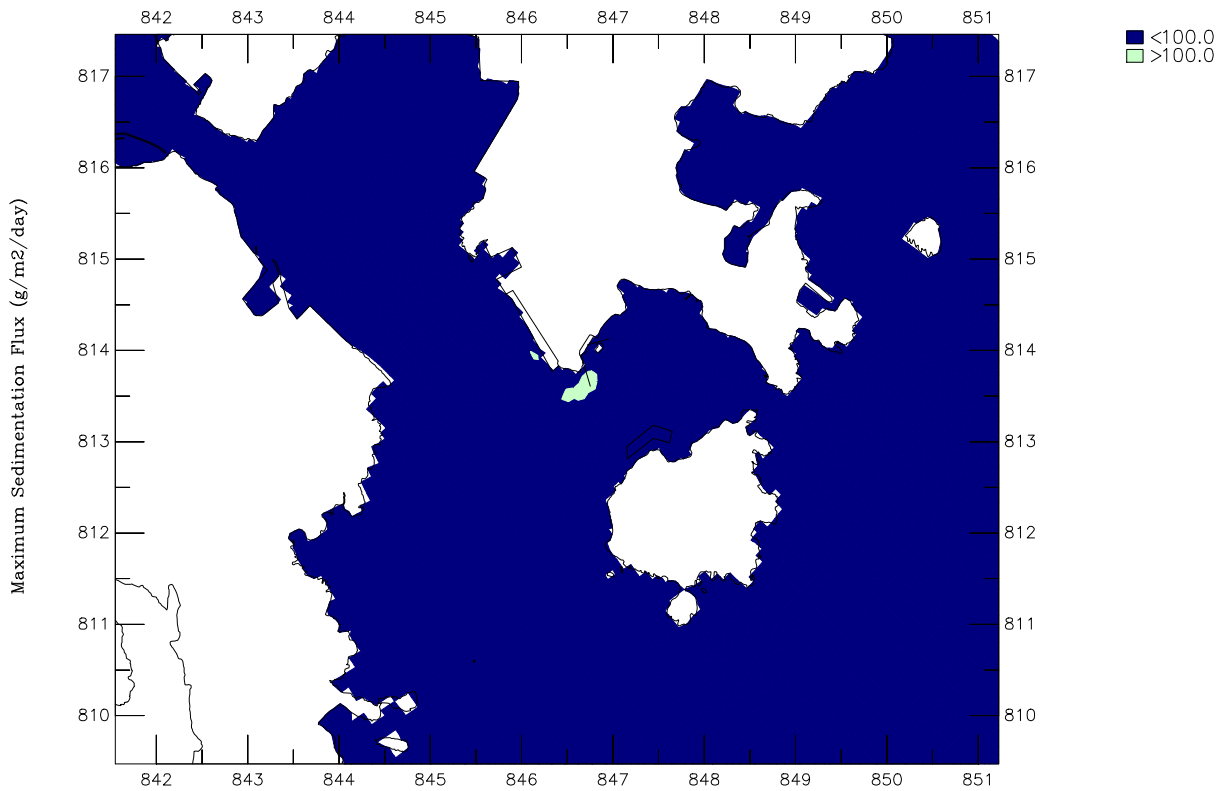
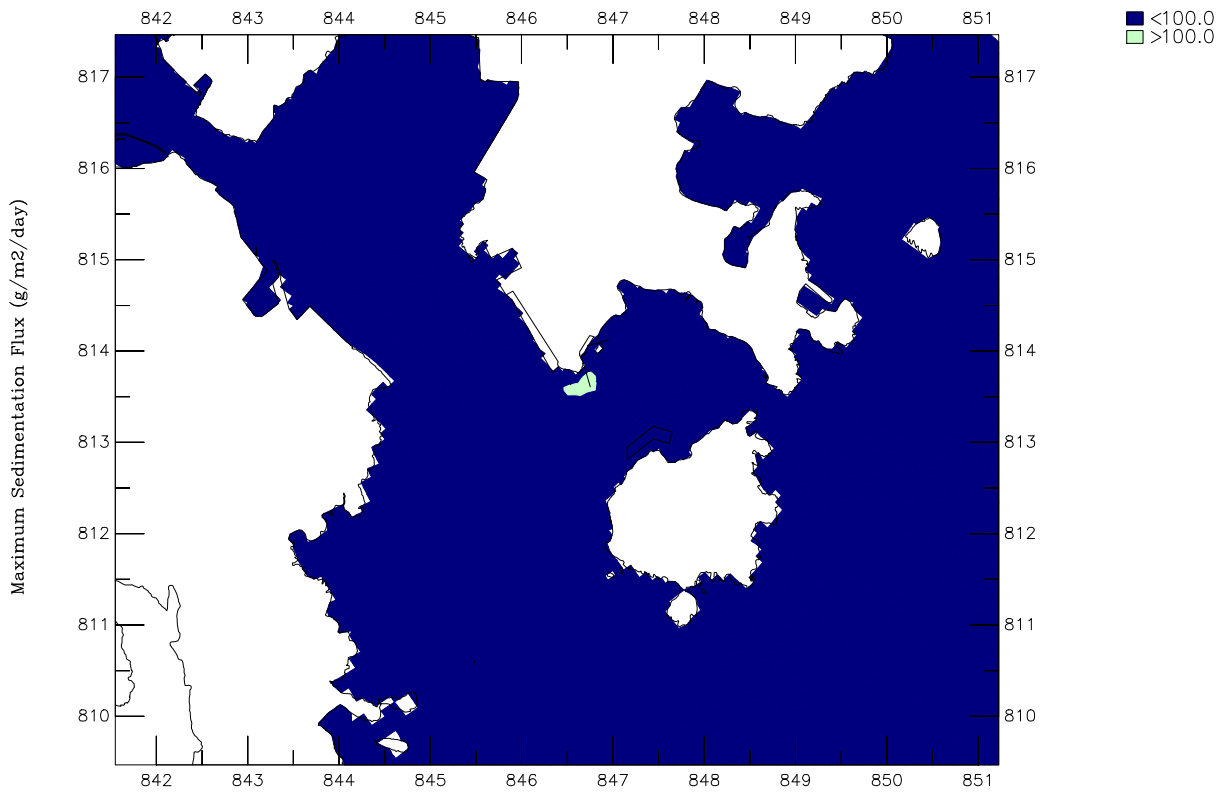
Year 2020

Annex 6E-4a

ERM HK Limited

0189570/GPP

SalineDischarge.ssn



Desalination Plant at Tseung Kwan O – Feasibility Study  
 Operation Phase Saline Discharge – Maximum Sedimentation Flux at Seabed  
 Top: Dry Season; Bottom: Wet Season

Year 2020

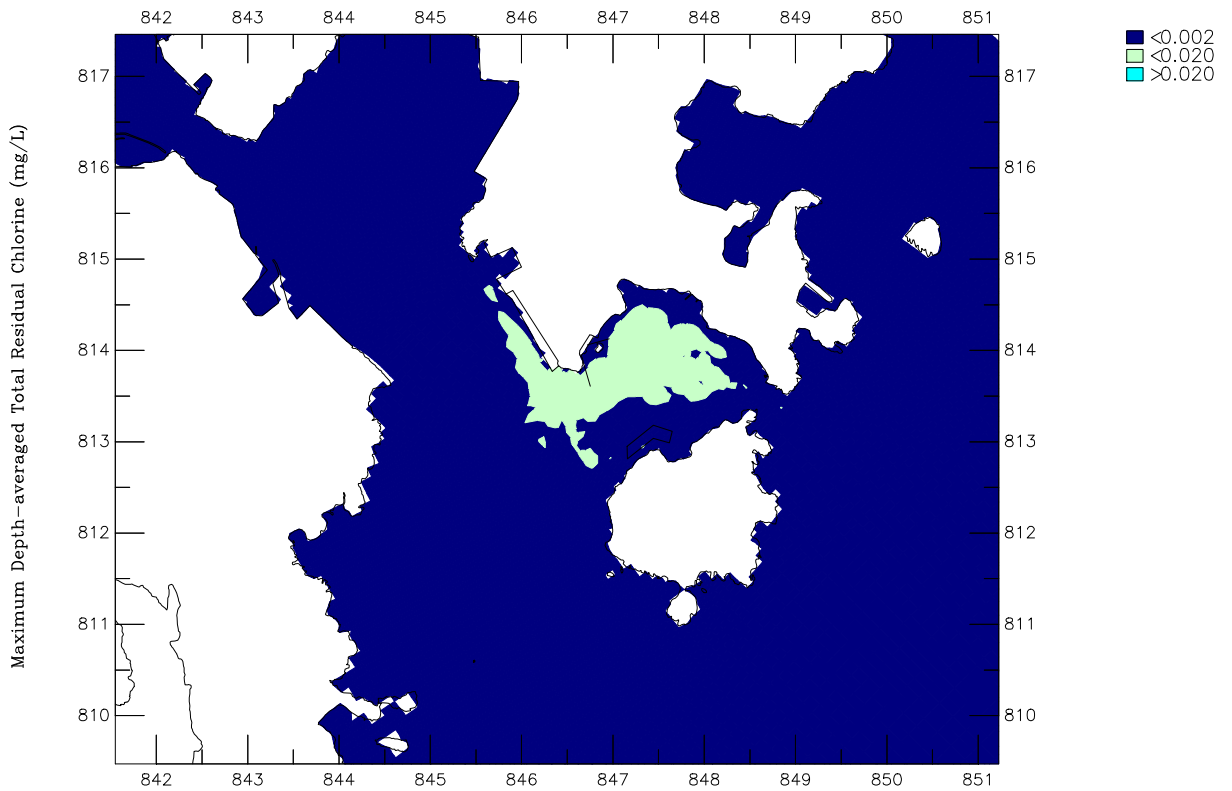
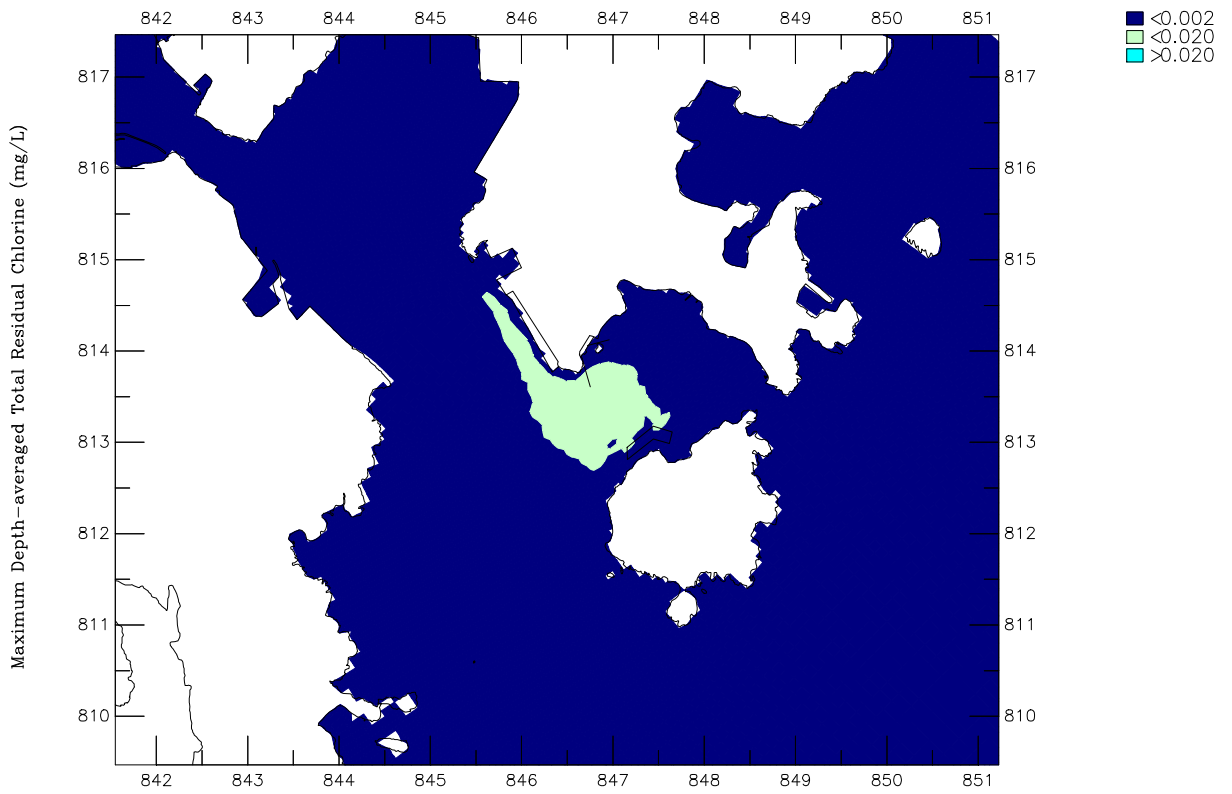
Annex 6E-5

ERM HK Limited

0189570/GPP

SalineDischarge.ssn





Desalination Plant at Tseung Kwan O – Feasibility Study  
 Operation Phase Saline Discharge – Maximum Depth-averaged Total Residual Chlorine  
 Top: Dry Season; Bottom: Wet Season (Criteria = 0.02 mg/L)

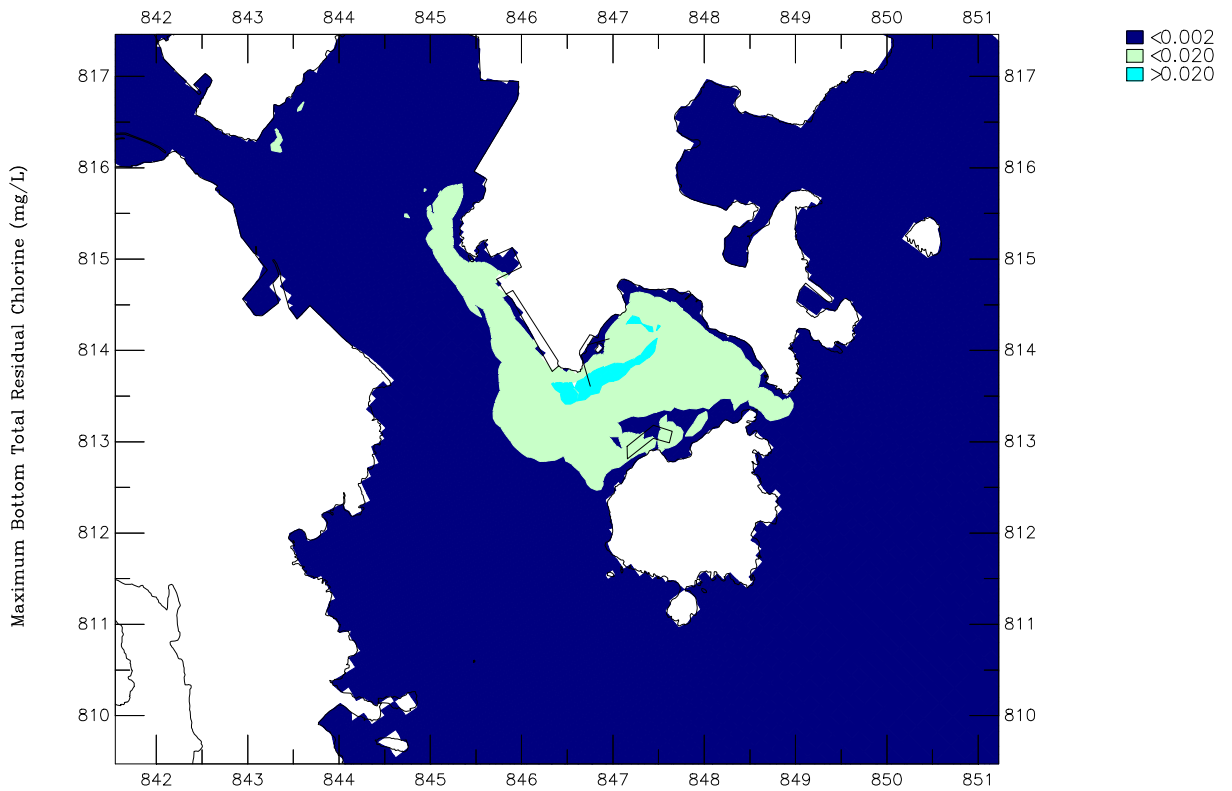
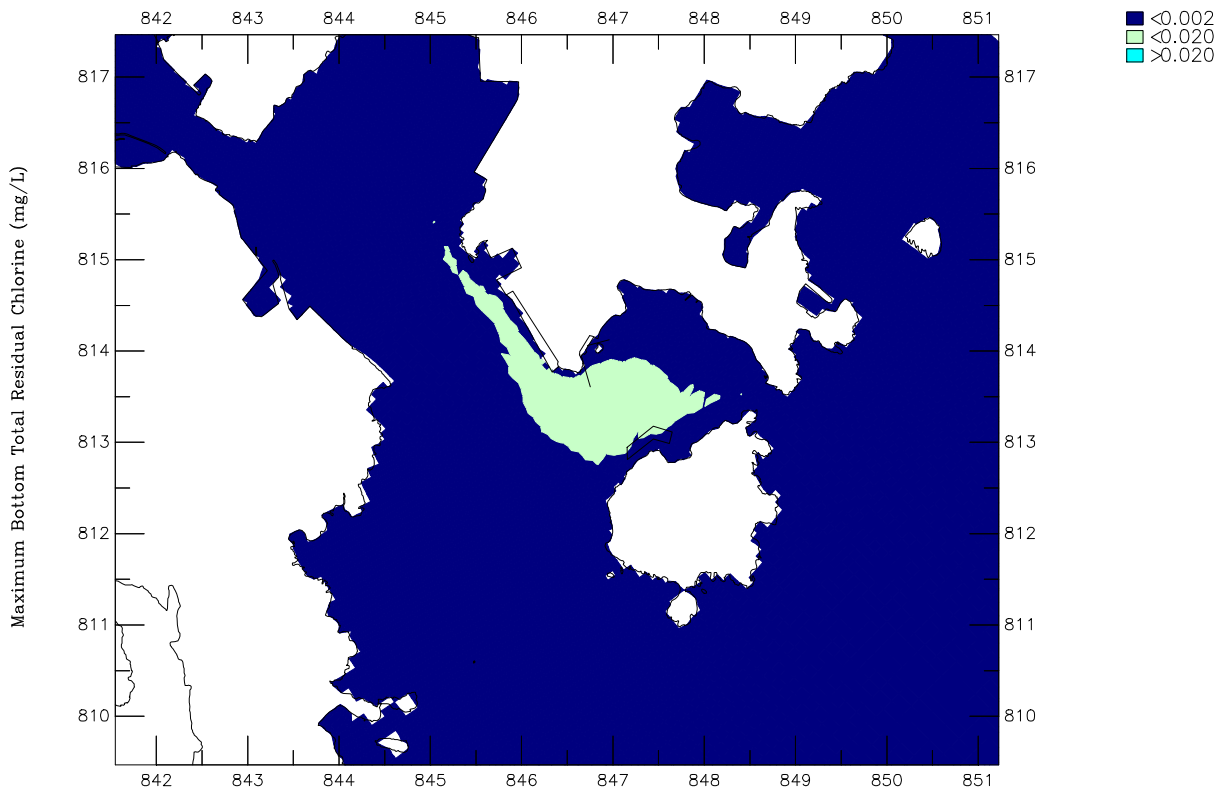
Year 2020

Annex 6E-6

ERM HK Limited

0189570/GPP

SalineDischarge.ssn



Desalination Plant at Tseung Kwan O – Feasibility Study  
 Operation Phase Saline Discharge – Maximum Bottom Total Residual Chlorine  
 Top: Dry Season; Bottom: Wet Season (Criteria = 0.02 mg/L)

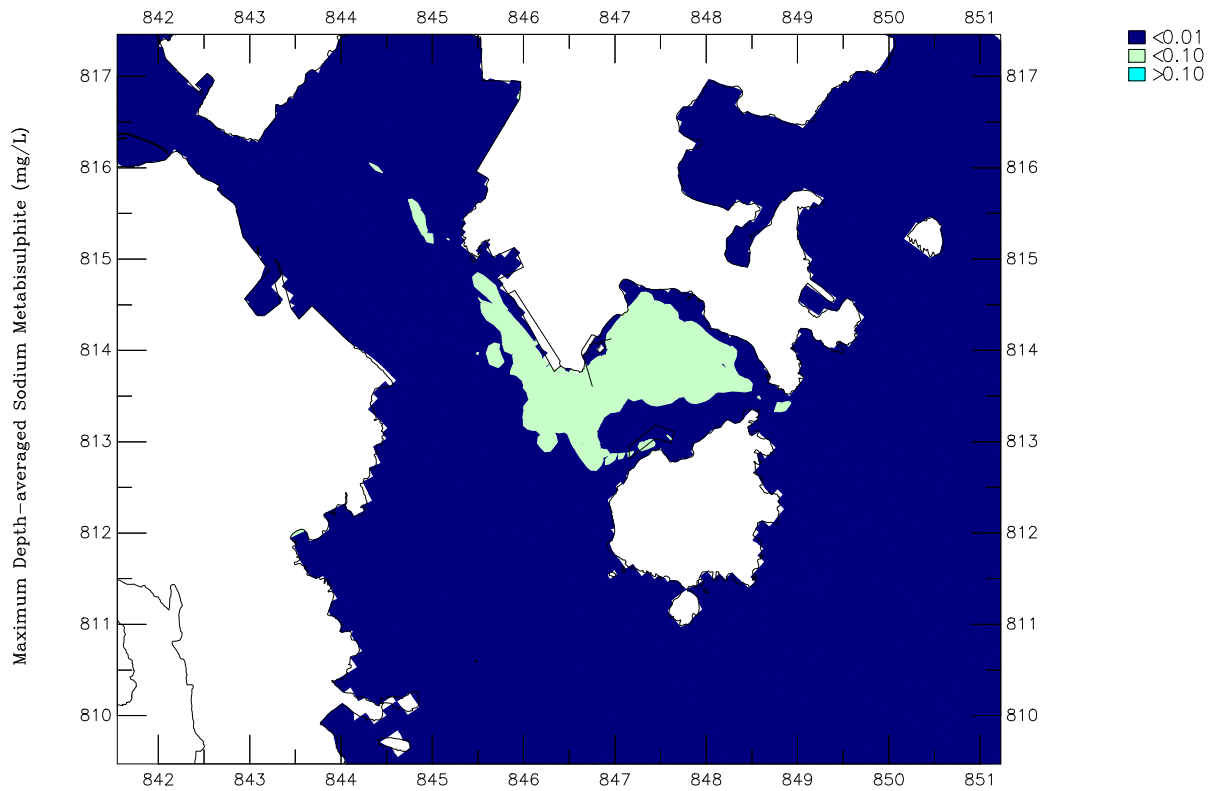
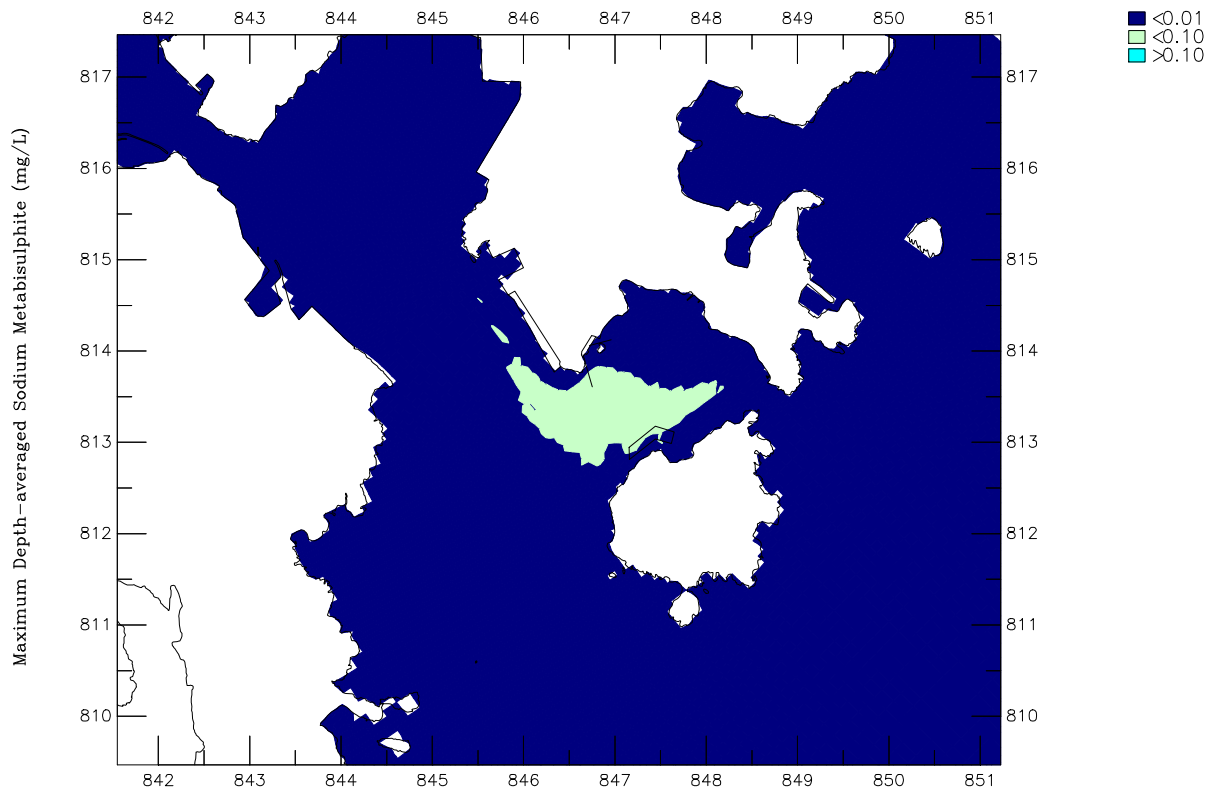
Year 2020

Annex 6E-6a

ERM HK Limited

0189570/GPP

SalineDischarge.ssn



Desalination Plant at Tseung Kwan O – Feasibility Study

Year 2020

Operation Phase Saline Discharge – Maximum Depth-averaged Sodium Metabisulphite

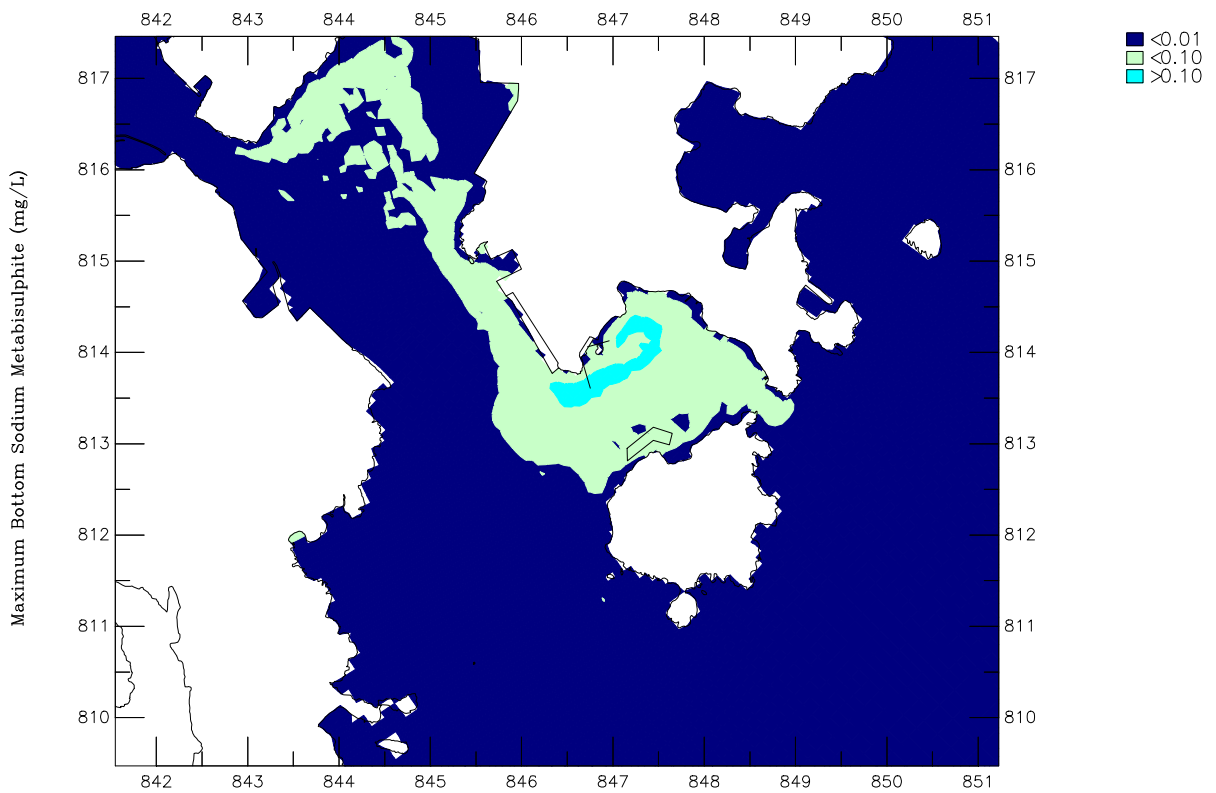
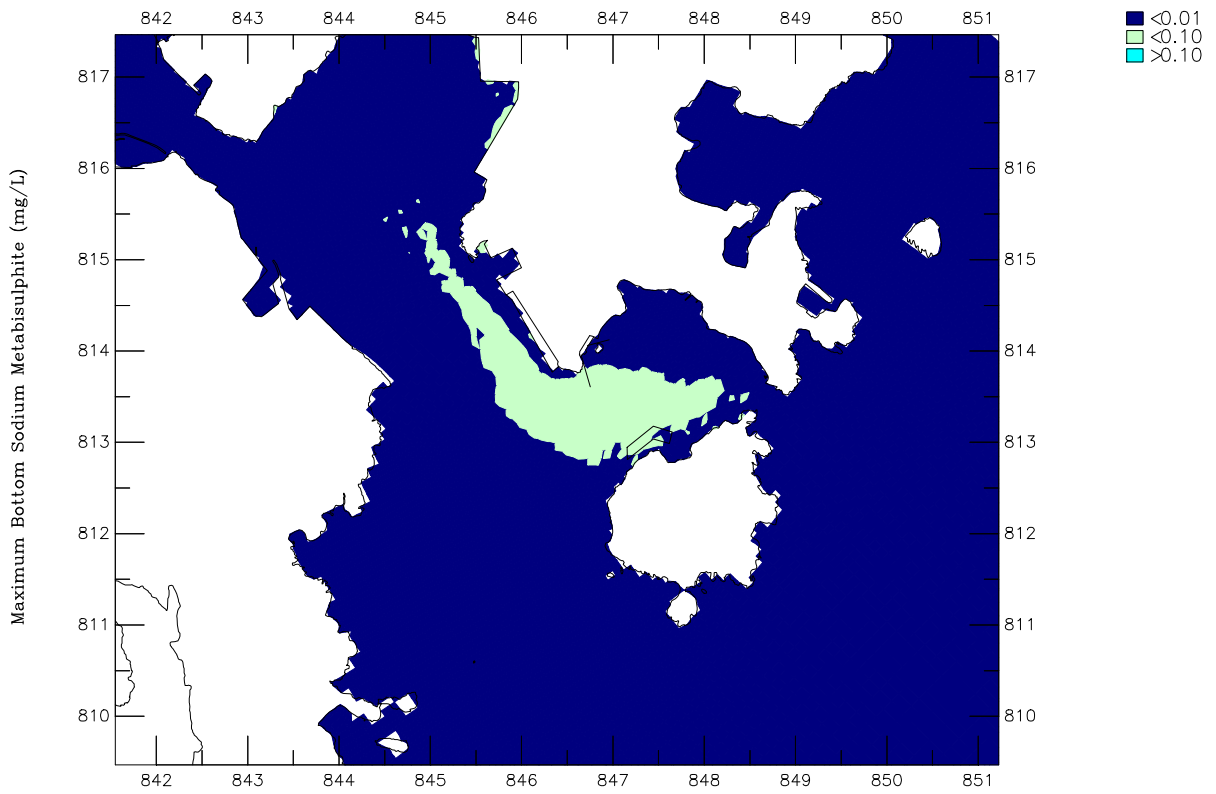
Annex 6E-7

Top: Dry Season; Bottom: Wet Season

ERM HK Limited

0189570/GPP

SalineDischarge.ssn



Desalination Plant at Tseung Kwan O – Feasibility Study  
 Operation Phase Saline Discharge – Maximum Bottom Sodium Metabisulphite  
 Top: Dry Season; Bottom: Wet Season

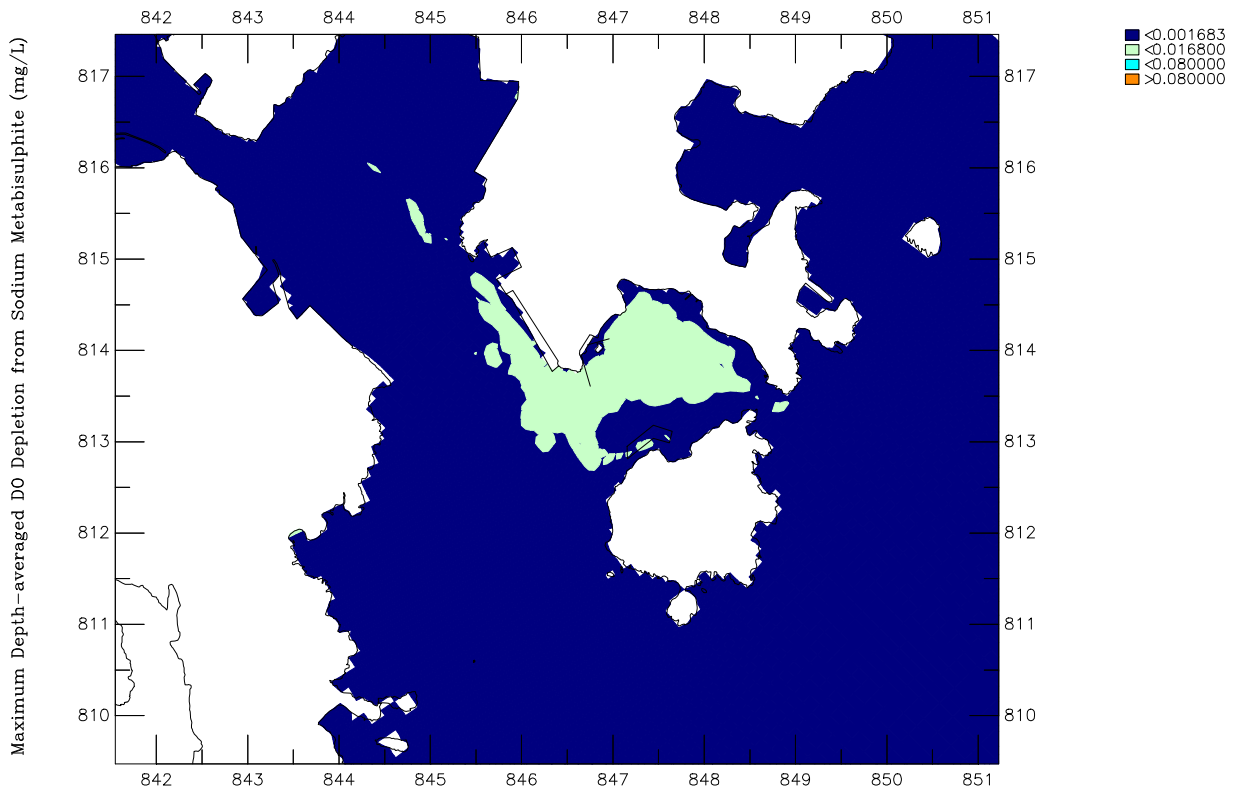
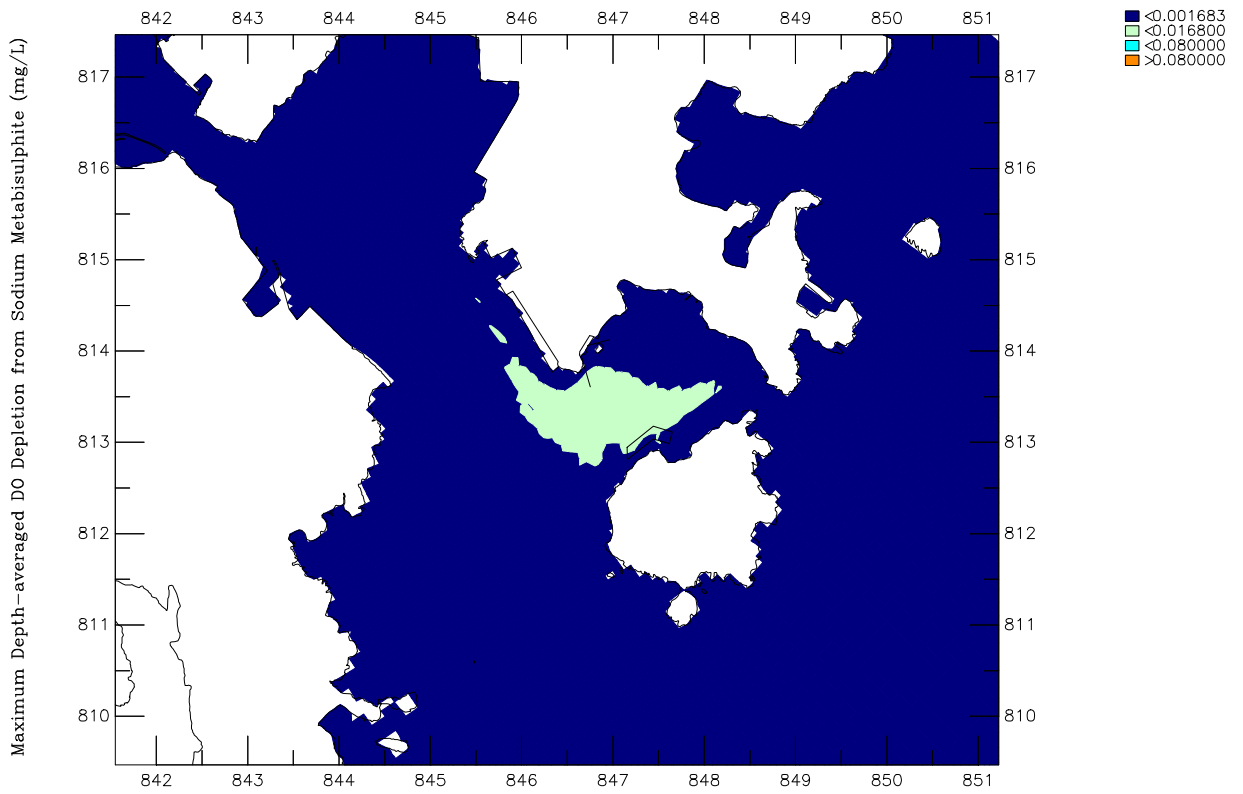
Year 2020

Annex 6E-7a

ERM HK Limited

0189570/GPP

SalineDischarge.ssn

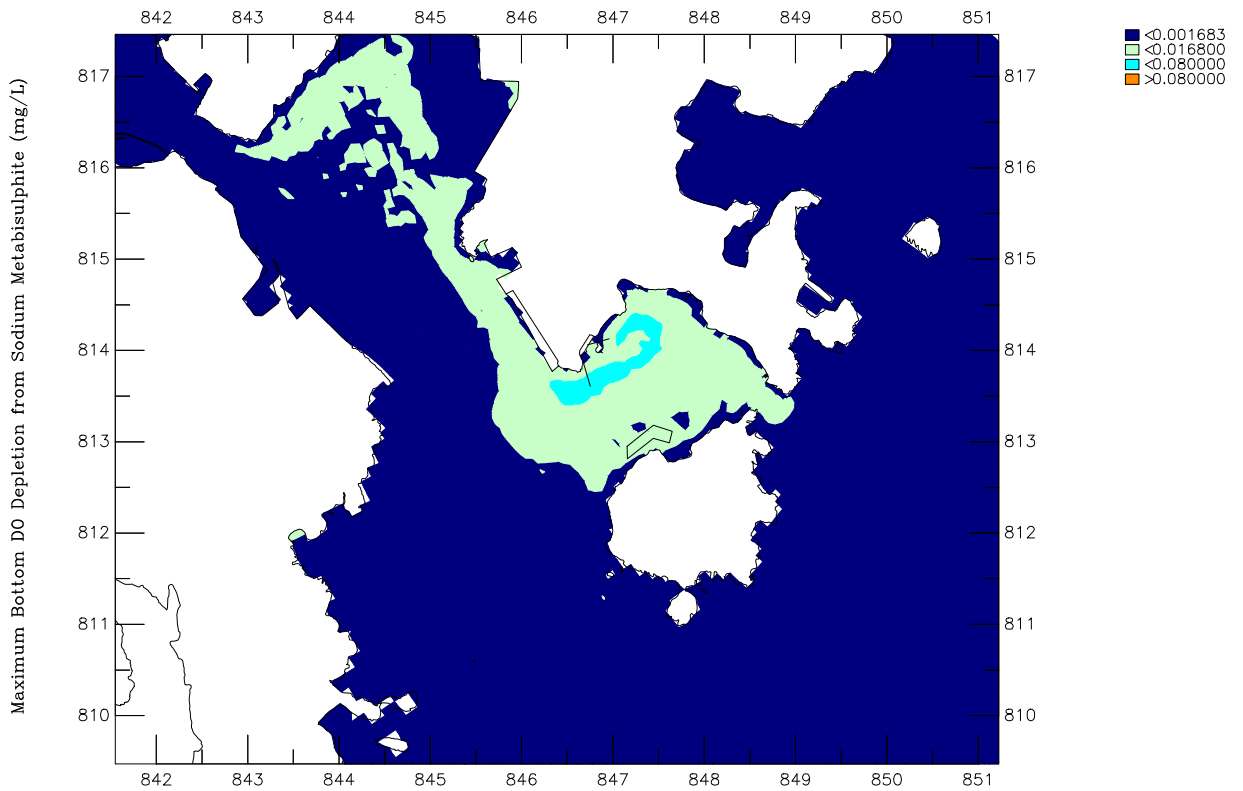
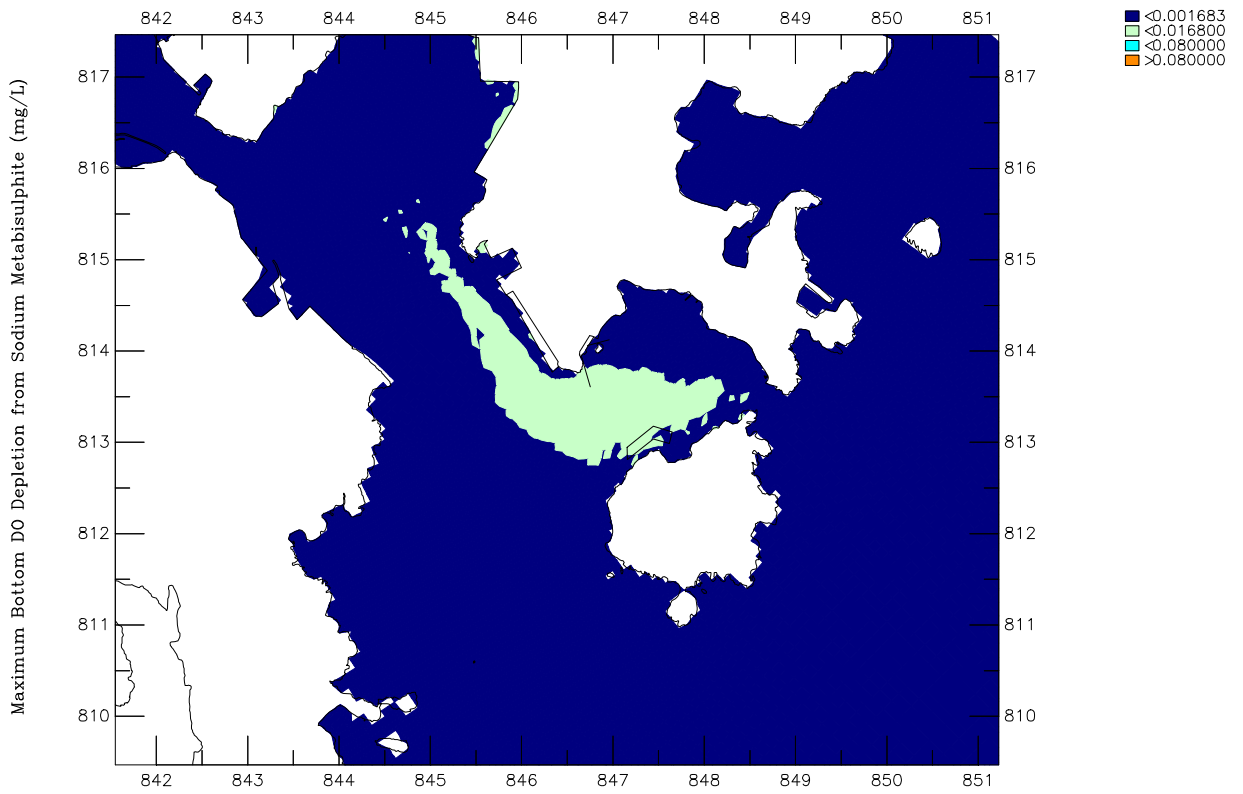


Desalination Plant at Tseung Kwan O – Feasibility Study  
 Operation Phase Saline Discharge – Maximum Depth-averaged Dissolved Oxygen Depletion  
 Top: Dry Season; Bottom: Wet Season

Year 2020  
 Annex 6E-8

ERM HK Limited

0189570/GPP SalineDischarge.ssn



Desalination Plant at Tseung Kwan O – Feasibility Study  
 Operation Phase Saline Discharge – Maximum Bottom Dissolved Oxygen Depletion  
 Top: Dry Season; Bottom: Wet Season

Year 2020

Annex 6E-8a

ERM HK Limited

0189570/GPP

SalineDischarge.ssn