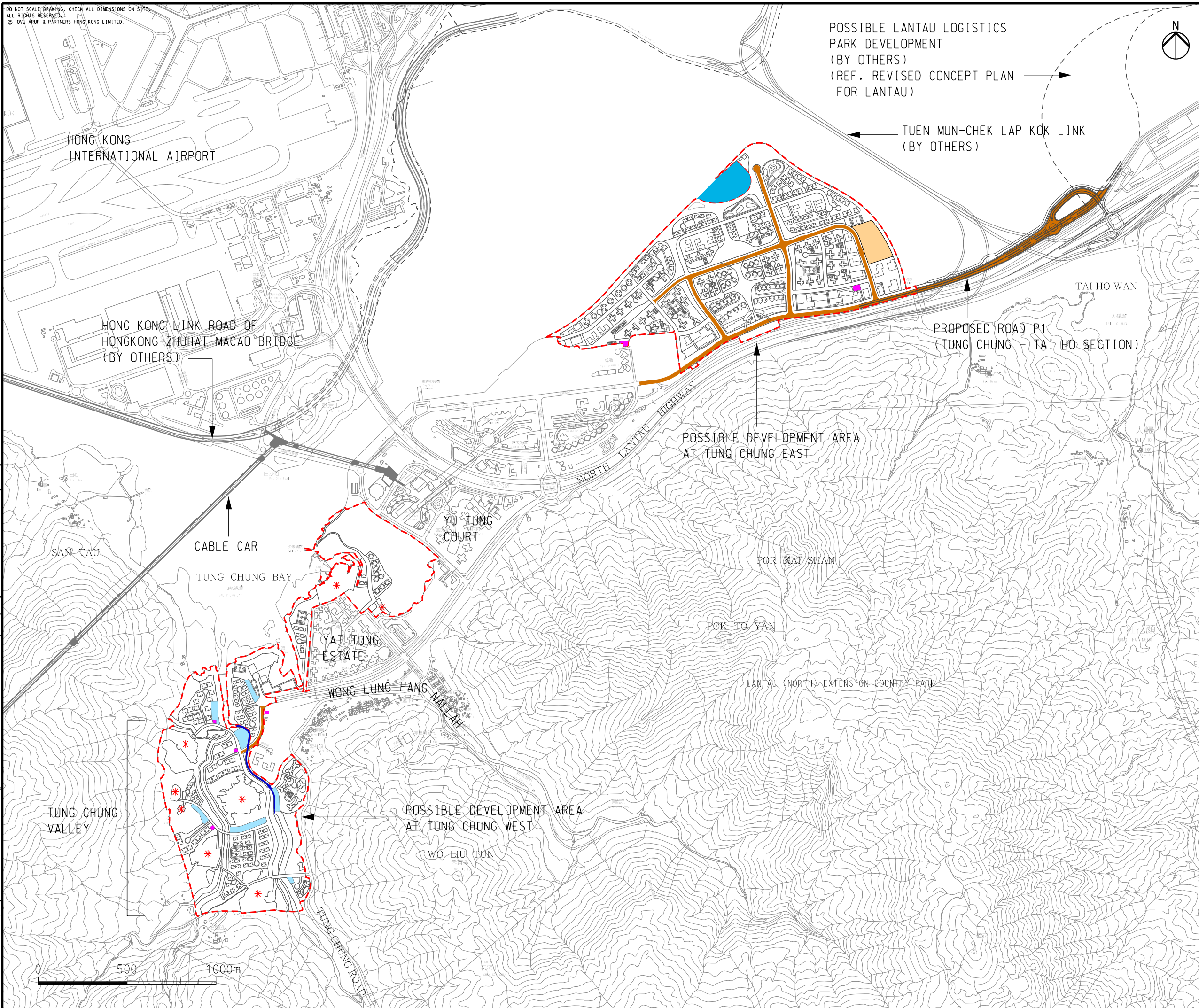


DO NOT SCALE DRAWING. CHECK ALL DIMENSIONS ON SITE.
ALL RIGHTS RESERVED.
© OVE ARUP & PARTNERS HONG KONG LIMITED.



- LEGEND**
- KEY PROJECT ELEMENTS**
- POSSIBLE DEVELOPMENT AREA
 - SEWAGE PUMPING STATION
 - RE-VITALIZATION WORKS ALONG CHANNELIZED SECTION OF TUNG CHUNG STREAM (PARTLY PROPOSED AS RIVER PARK)
 - PRIMARY DISTRIBUTOR ROADS AND DISTRICT DISTRIBUTOR ROADS
 - SUSTAINABLE URBAN DRAINAGE SYSTEM
 - * PROPER SEWERAGE SYSTEM FOR EXISTING VILLAGES
 - MARINA
 - OUTDOOR SPORTING FACILITY

E	FIFTH ISSUE	GL	11/15
D	FOURTH ISSUE	GL	10/15
C	THIRD ISSUE	GL	08/15
B	SECOND ISSUE	GL	06/15
Rev	Description	By	Date

Consultant		ARUP	
Project title			
Tung Chung New Town Extension			
Drawing title			
Location of Project			
Drawing no.		Rev.	
Figure 1.1		E	
Drawn	Date	Checked	Approved
GL	11/15	LK	FC
Scale	Status		
1:20000 @A3	PRELIMINARY		

COPYRIGHT RESERVED

土木工程拓展署
Civil Engineering and
Development Department

Printed by : 11/25/2015
Filename : G:\env\project\219844-70\13 Drawing Deliverables\35 Executive Summary Eng\Figure 1.1 - Location of Project.dgn