

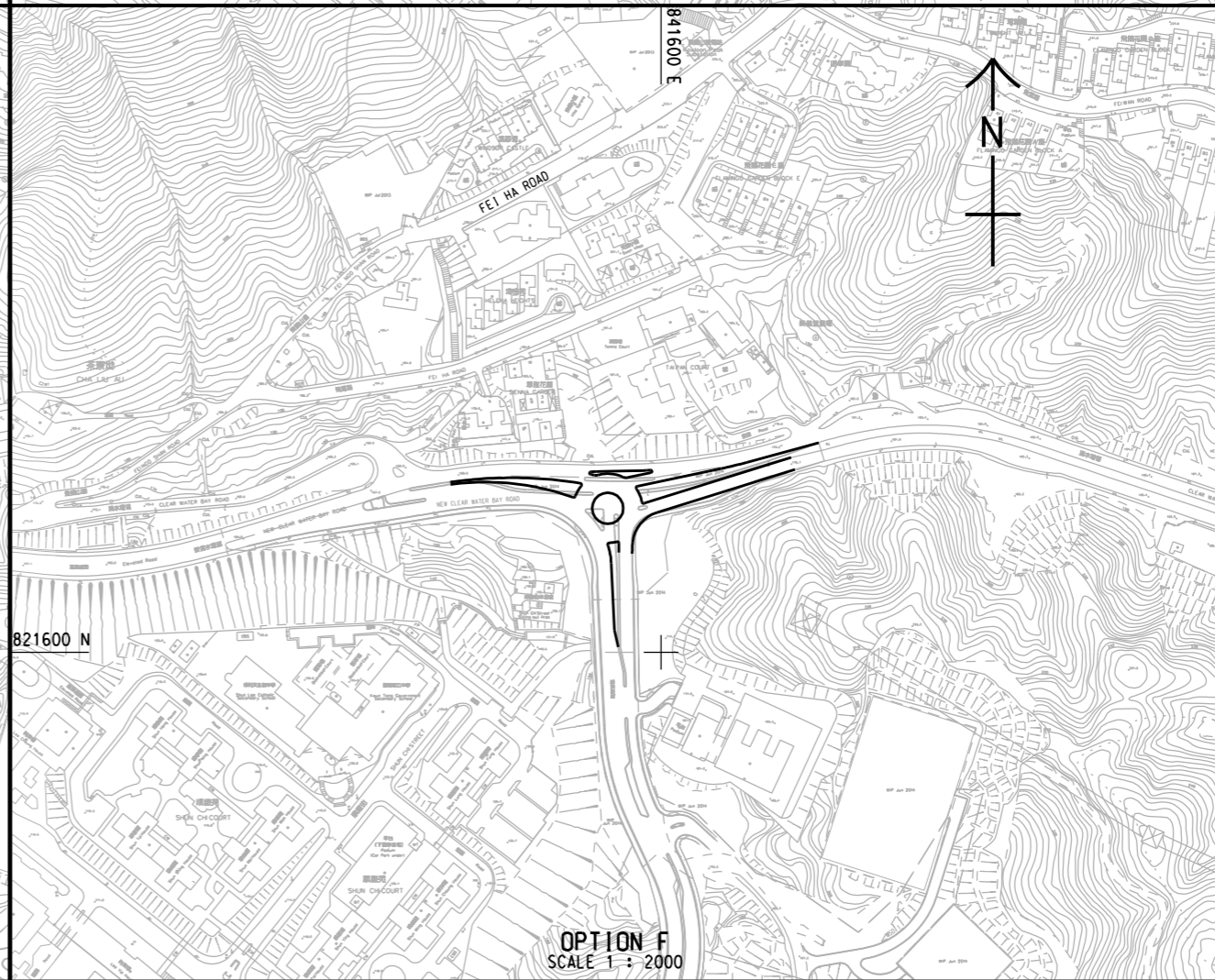
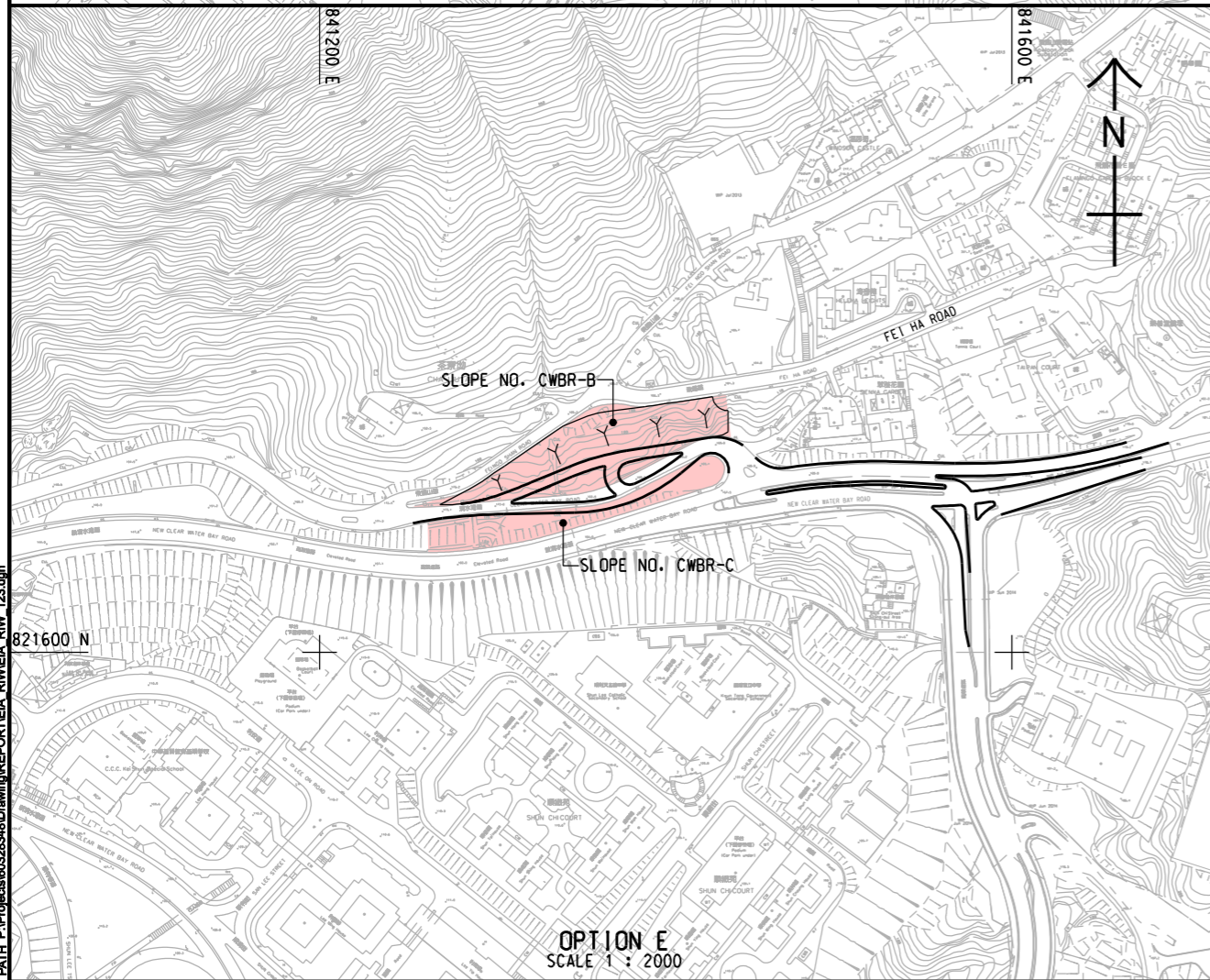
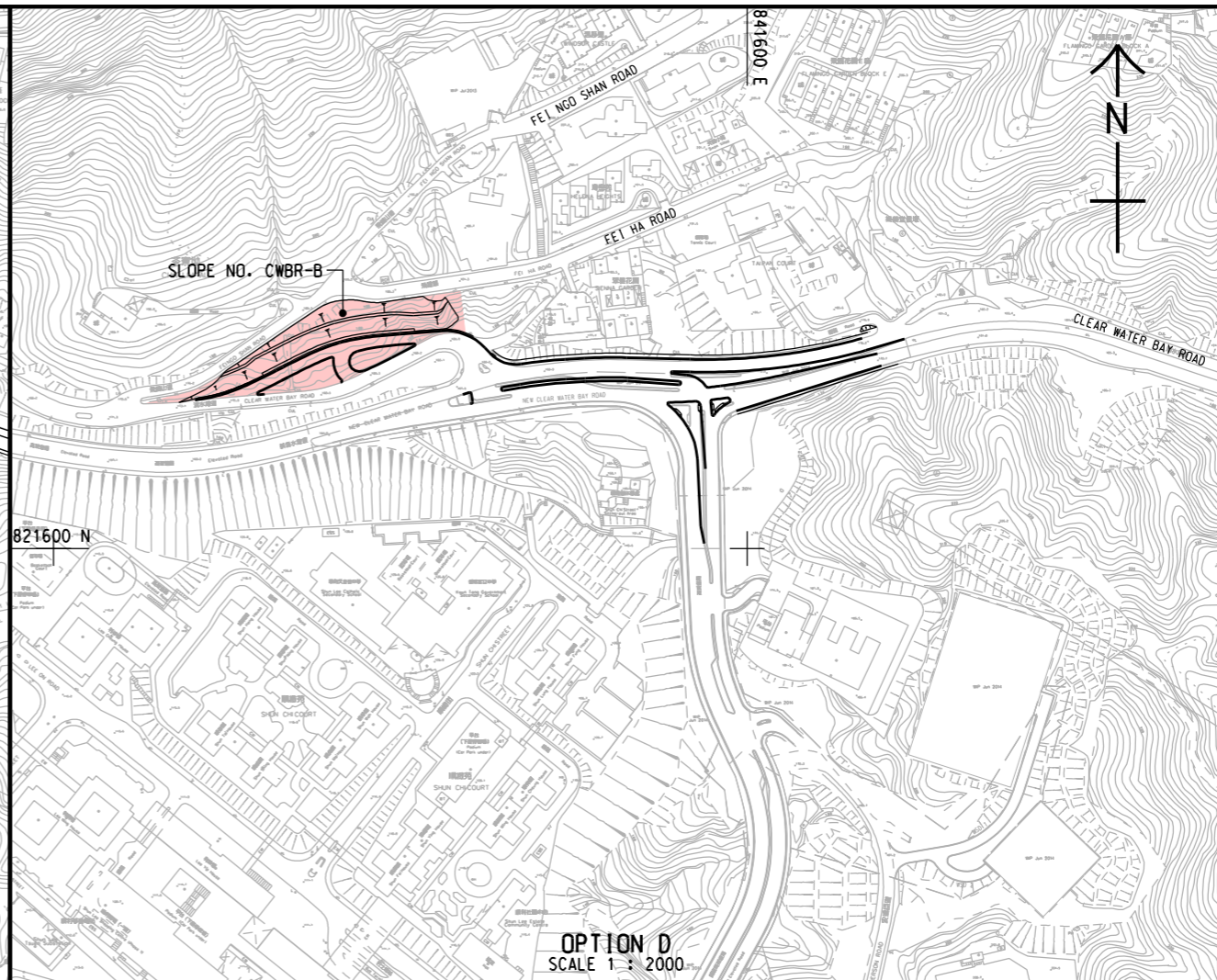
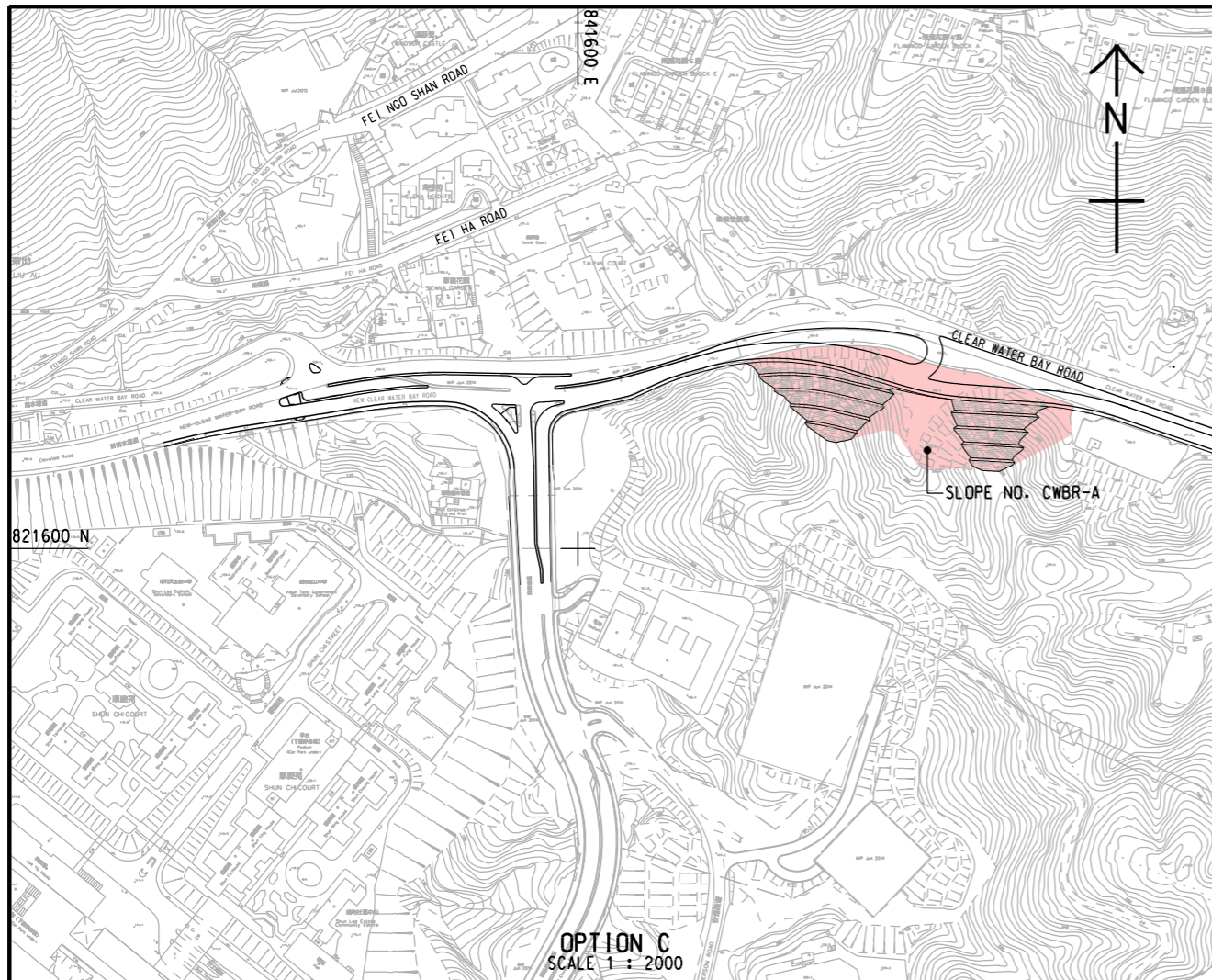
ISO A1 594mm x 841mm

Approved:

Checked:

Designer:

Project Management Initials:



AECOM

PROJECT

**DEVELOPMENT OF
ANDERSON ROAD
QUARRY SITE -
INVESTIGATION, DESIGN
AND CONSTRUCTION**

CLIENT

CEDD 土木工程拓展署
Civil Engineering and
Development Department

CONSULTANT

AECOM Asia Company Ltd.
www.aecom.com

SUB-CONSULTANTS

ISSUE/REVISION

| IR/ | DATE | DESCRIPTION | CHK. |
|-----|------|-------------|------|
| 號 | 日期 | 內容摘要 | 號 |
| | | | |
| | | | |
| | | | |

STATUS

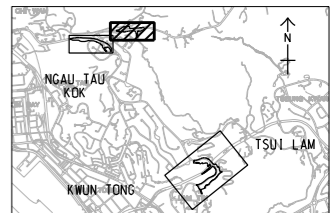
SCALE

A1 AS SHOWN

DIMENSION UNIT

公尺

KEY PLAN A1 1 : 80000



PROJECT NO.

60328348

CONTRACT NO.

CE 10/2014 (CE)

SHEET TITLE

**OPTIONS OF RIW AT J/O CLEAR WATER
BAY ROAD AND ON SAU ROAD AND J/O
CLEAR WATER BAY ROAD AND NEW
CLEAR WATER BAY ROAD**

SHEET NUMBER

60328348/EIA_RIW/FIGURE 3.2

Pld File by: LIX02 2015/09/11
PATH: P:\Projects\60328348\Drawing\REPORT\EIA_RIW\123.dgn

This drawing has been prepared for the use of AECOM's client. It may not be used, modified, reproduced or relied upon by third parties, except as approved by AECOM or as required by law. AECOM accepts no responsibility, and denies any liability whatsoever, for any party that uses or relies on this drawing without AECOM's express written consent. Do not scale this document. All measurements must be obtained from the stated dimensions.