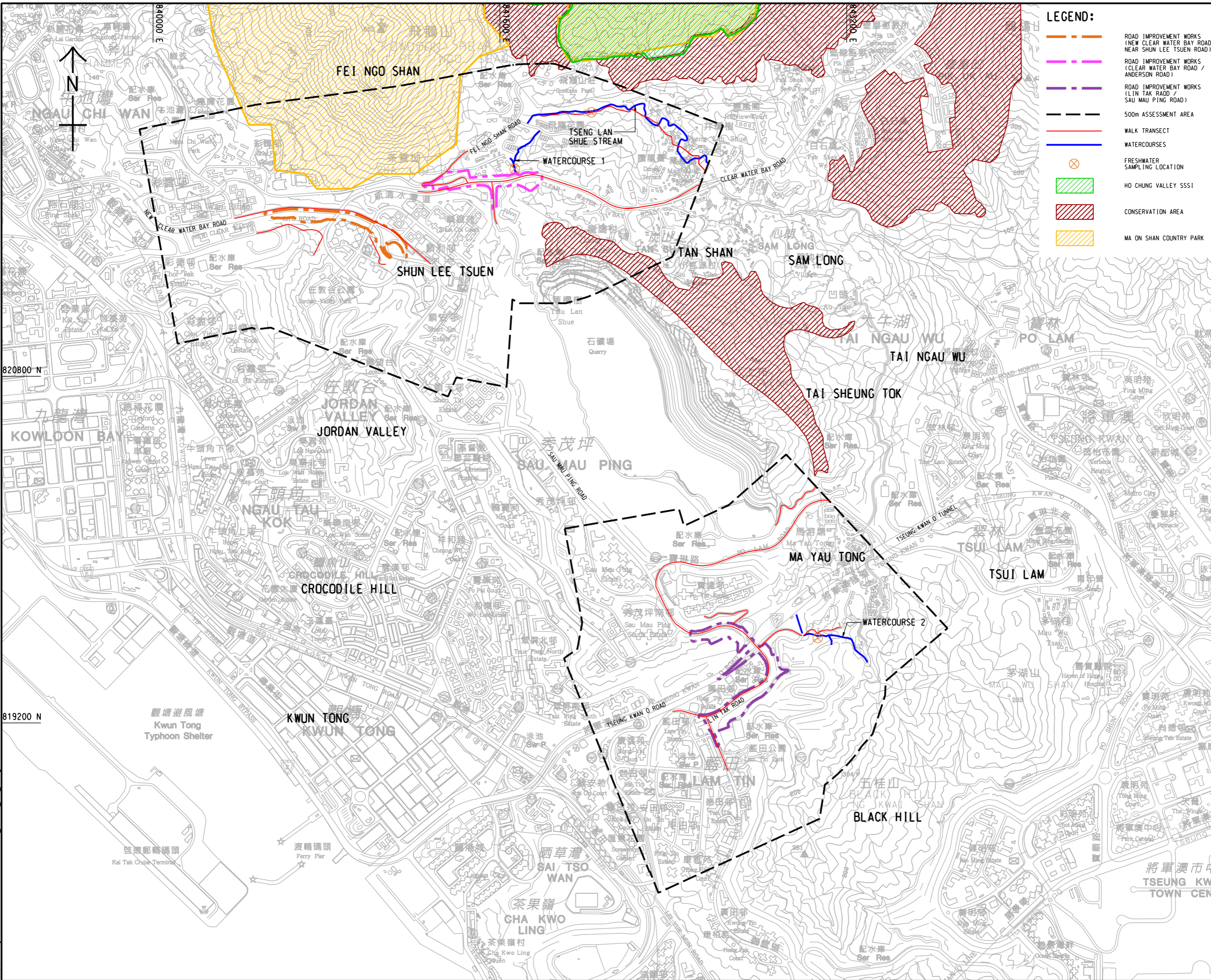


ISO A1 594mm x 841mm
 Approved:
 Checked:
 Designer:
 Project Management Initials:
 820800 N
 819200 N
 Pld File by: CUIBK 2015/09/30
 PATH: P:\Projects\8028348\DRAWING\REPORT\EA_RI\MEA_RIW_731.dgn



LEGEND:

- ROAD IMPROVEMENT WORKS (NEW CLEAR WATER BAY ROAD NEAR SHUN LEE TSUEN ROAD)
- ROAD IMPROVEMENT WORKS (CLEAR WATER BAY ROAD / ANDERSON ROAD)
- ROAD IMPROVEMENT WORKS (LIN TAK ROAD / SAU MAU PING ROAD)
- 500m ASSESSMENT AREA
- WALK TRANSECT
- WATERCOURSES
- ⊗ FRESHWATER SAMPLING LOCATION
- HO CHUNG VALLEY SSSI
- CONSERVATION AREA
- MA ON SHAN COUNTRY PARK

AECOM

PROJECT
 DEVELOPMENT OF ANDERSON ROAD QUARRY SITE - INVESTIGATION, DESIGN AND CONSTRUCTION

CLIENT
 土木工程拓展署
 CEDD Civil Engineering and Development Department

CONSULTANT
 AECOM Asia Company Ltd.
 www.aecom.com

SUB-CONSULTANTS
 分列工程顧問公司

ISSUE/REVISION

NO.	DATE	DESCRIPTION	CHK.

STATUS

SCALE
 1:8000

DIMENSION UNIT
 METRES

KEY PLAN

PROJECT NO.
60328348

CONTRACT NO.
CE 10/2014 (CE)

SHEET TITLE
ECOLOGICAL SURVEY LOCATIONS

SHEET NUMBER
60328348/EIA_RIW/FIGURE 9.1

This drawing has been prepared for the use of AECOM's client. It may not be used, modified, reproduced or relied upon by third parties, except as required by law. AECOM accepts no responsibility, and denies any liability whatsoever, to any party that uses or relies on this drawing without AECOM's express written consent. Do not scale this document. All measurements must be obtained from the related dimensions.