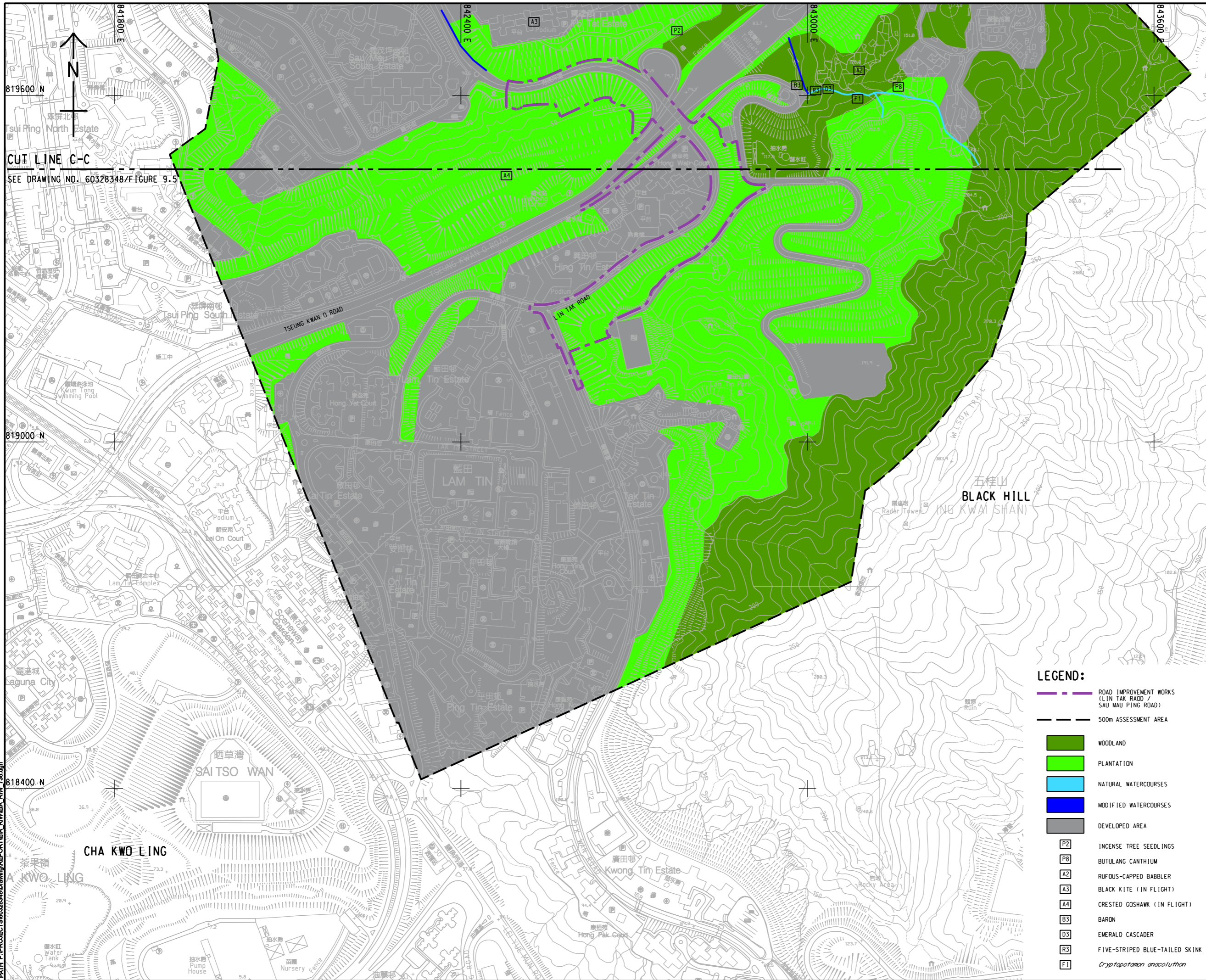


ISO A1 594mm x 841mm
 Approved:
 Checked:
 Designer:
 Project Management Initials:
 Pld File by: ZHLZ 2015/11/11
 PATH: P:\PROJECTS\60328348\Drawing\REPORT\EA_RIWEIA_RIW_738.dgn



AECOM

PROJECT
 項目
DEVELOPMENT OF ANDERSON ROAD QUARRY SITE - INVESTIGATION, DESIGN AND CONSTRUCTION

CLIENT
 業主
 土木工程拓展署
 Civil Engineering and Development Department

CONSULTANT
 顧問公司
 AECOM Asia Company Ltd.
 www.aecom.com

SUB-CONSULTANTS
 分判工程師/顧問公司

ISSUE/REVISION
 修訂

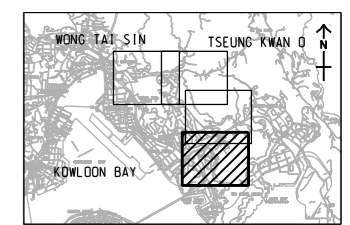
IR/修訂	DATE/日期	DESCRIPTION/內容摘要	CHK/核對

STATUS
 階段

SCALE
 比例
 A1 1:3000

DIMENSION UNIT
 尺寸單位
 METRES

KEY PLAN A1 1:120000



- LEGEND:**
-  ROAD IMPROVEMENT WORKS (LIN TAK ROAD / SAU MAU PING ROAD)
 -  500m ASSESSMENT AREA
 -  WOODLAND
 -  PLANTATION
 -  NATURAL WATERCOURSES
 -  MODIFIED WATERCOURSES
 -  DEVELOPED AREA
 -  INCENSE TREE SEEDLINGS
 -  BUTULANG CANTHIUM
 -  RUFOUS-CAPPED BABBLER
 -  BLACK KITE (IN FLIGHT)
 -  CRESTED GOSHAWK (IN FLIGHT)
 -  BARON
 -  EMERALD CASCADER
 -  FIVE-STRIPED BLUE-TAILED SKINK
 -  *Cryptotriton anacolutum*

PROJECT NO.
 項目編號
 60328348

CONTRACT NO.
 合約編號
 CE 10/2014 (CE)

SHEET TITLE
 圖紙名稱
HABITAT MAP AND LOCATIONS OF SPECIES OF CONSERVATION IMPORTANCE

SHEET NUMBER
 圖紙編號
 60328348/EIA_RIW/FIGURE 9.6

SHEET 4 OF 4

This drawing has been prepared for the use of AECOM's client. It may not be used, modified, reproduced or relied upon by third parties, except as required by law. AECOM accepts no responsibility, and denies any liability whatsoever, to any party that uses or relies on this drawing without AECOM's express written consent. Do not scale this document. All measurements must be obtained from the stated dimensions.