

Appendix 4-12


Calculated Mitigated Construction Noise Levels Due to Planned “REC Site” (Directly Extracted from Published EIA Report (EIA-220/2014))

Construction Programme of this Project (extracted from Appendix 1-1)
 - Highlighted are construction activities which may be constructed concurrently with the planned "REC Site" project

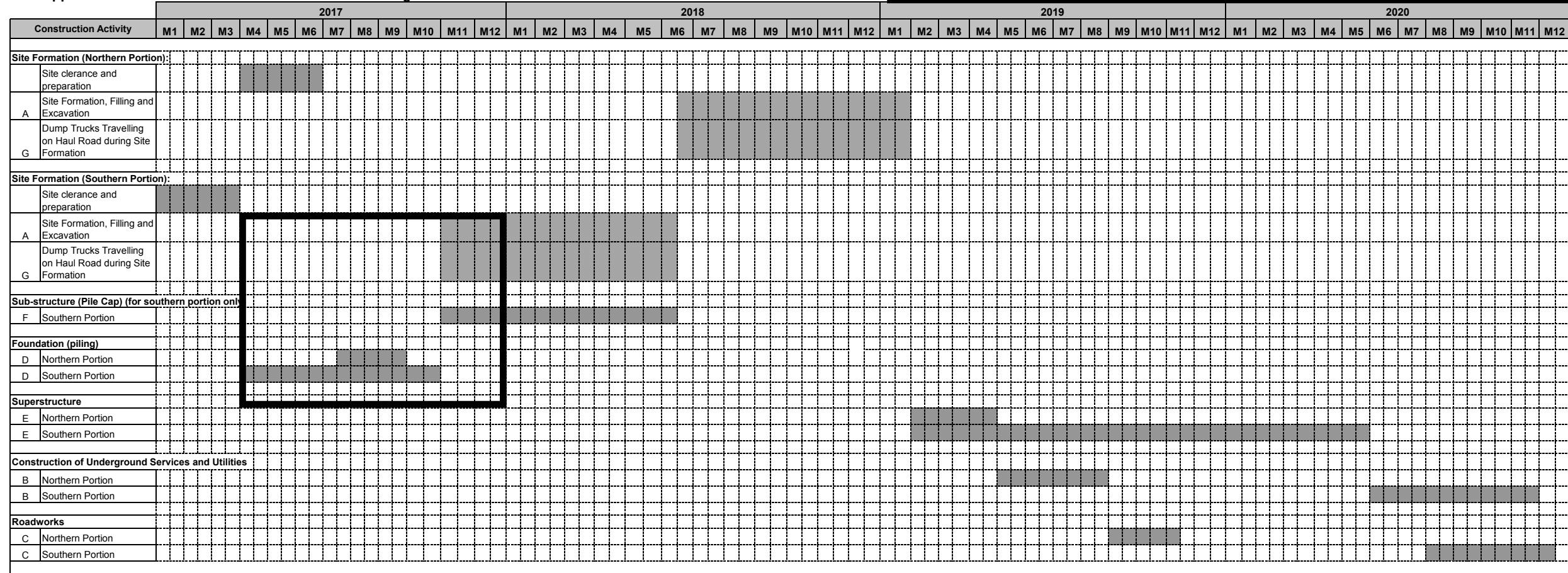
Appendix 1-1 Project Implementation Programme

Construction Activity	2016												2017											
	M1	M2	M3	M4	M5	M6	M7	M8	M9	M10	M11	M12	M1	M2	M3	M4	M5	M6	M7	M8	M9	M10	M11	M12
Site clearance and preparation																								
A Site Formation, Filling and Excavation																								
F Dump Trucks Travelling on Haul Road during site formation																								
B Construction of Underground Services and Utilities																								
C Road works																								
D Foundation																								
E Superstructure																								
Concurrent Construction Activities by Work Group				A+F									B+D		B+E			C+E						
Duration of Concurrent Works				7.5 months									2 months		3 month			3 months						

Remark:
 The above Construction Programme for Site Formation is prepared with the following assumption:
 Working hours = 08:00 to 18:00
 Working days = 25 days per month

 Construction activities that will be constructed concurrently with the planned "REC Site" project.

Appendix 1-1 Fairview Park REC Site Construction Programme



Concurrent Construction Activities by Work Group	Northern: Nil; Southern: D	Northern: D; Southern: D	Northern Portion: Nil; Southern Portion: A+C+F	Northern Portion: A+G; Southern Portion: Nil	Northern Portion: E; Southern Portion: E	Northern Portion: B; Southern Portion: E	Northern Portion: C; Southern Portion: E	Northern Portion: nil; Southern Portion: B+C
Duration of Concurrent Works	3.5 months	2.5 months	7.5 months	7.5 months	3 months	4 months	2.5 months	4 months

Remark:

The above Construction Programme for Site Formation is prepared with the following assumption:
Working hours = 08:00 to 18:00 hours
Working days = 25 days per months


 Construction activities that will be constructed concurrently with this Project.

Table 4-19 Mitigated Construction Noise Levels With the Use of QPMEs, Movable Noise Barriers and Temp. Fixed Noise Barriers #

NSR Label	Descriptions	Northern Portion					Southern Portion					Northern and Southern Portions *					Noise Criteria						
		A	B	C	D	E	G	A	B	C	D	E	F	G	Noise Level Due To Concurrent Construction Activities								
		Site Formation, Filling and Excavation	Construction of Underground Services and Utilities	Road works	Foundation (Piling)	Superstructure	Dump Trucks Travelling on Haul Road During Site Formation	Site Formation, Filling and Excavation	Construction of Underground Services and Utilities	Road works	Foundation (Piling)	Superstructure	Sub-structure (Pile Cap)	Dump Trucks Travelling on Haul Road During Site Formation	Northern: D; Southern: D	Northern: Nil; Southern: A+G+F	Northern: A+G; Southern: nil	northern: E; Southern: E	northern: B; Southern: E	northern: C; Southern: E	northern: nil; Southern: B+C	Highest Noise Level (due to REC site), dB(A) (A)	
N1	Fairview Park	56	54	54	57	54	56	71	70	72	74	71	71	64	74	74	59	71	71	71	74	74	75
N2	Fairview Park	57	55	55	58	55	57	70	69	71	73	70	70	64	73	74	60	70	70	70	73	74	75
N3	Fairview Park	57	56	55	57	57	54	66	66	67	68	68	66	59	68	69	59	68	68	68	69	69	75
N4	Fairview Park	66	64	64	67	64	61	66	66	67	68	68	66	59	71	70	67	70	70	70	70	71	75
N5	Fairview Park	72	70	70	73	70	64	58	57	59	61	58	58	58	73	63	72	70	70	70	61	73	75
N6	Fairview Park	72	70	70	73	70	64	53	52	54	56	53	53	55	73	59	73	70	70	70	56	73	75
N7	Yau Mei San Tsuen	59	57	57	60	57	69	49	48	50	52	49	49	66	60	66	70	57	57	57	53	70	75
N8	Chuk Yuen Tsuen	59	57	57	60	57	58	54	53	55	57	54	54	56	62	59	61	59	59	59	57	62	75
N9	Chuk Yuen Tsuen	59	57	57	60	57	57	53	52	54	56	53	53	55	61	59	61	58	58	58	56	61	75
N10	Bethel High School	56	55	54	56	56	53	66	66	67	68	68	66	59	68	69	58	68	68	68	69	69	70 (65 during exam)
N11	Helene Terrace	54	52	52	55	52	55	61	60	62	64	61	61	60	65	66	57	62	62	62	64	66	75
N12	Villa Camilia	53	51	51	54	51	54	56	55	57	59	56	56	57	60	61	57	57	57	57	60	61	75
N13	Fairview Park	54	52	52	55	52	55	68	67	69	71	68	68	63	71	71	58	68	68	68	71	71	75
N14	Wong Chan Sook Ying Memorial School	53	51	51	54	51	55	63	62	64	66	63	63	60	66	67	57	63	63	63	66	67	70 (65 during exam)
N15	Man Yuen Tsuen	52	50	50	53	50	54	60	59	61	63	60	60	59	63	64	56	60	60	60	63	64	75
N16	Fairview Park	68	66	66	69	66	62	52	51	53	55	52	52	55	69	58	69	66	66	66	55	69	75
N17	Palm Springs	57	55	55	58	55	57	49	48	50	52	49	49	53	59	55	60	56	56	56	52	60	75
N18	Temp. house at Yau Mei San Tsuen	58	56	56	59	56	57	49	48	50	52	49	49	53	59	56	60	56	56	56	52	60	75
N19	Existing village house	54	52	52	55	52	55	59	58	60	62	59	59	58	62	63	58	59	59	59	62	63	75
N20	Fairview Park	72	70	70	73	70	64	52	51	53	55	52	52	55	73	58	73	70	70	70	55	73	75
Planned NSRs																							
N1P	Planned Development at Yau Mei Site	73	71	71	74	71	64	54	53	55	57	54	54	56	74	59	73	71	71	71	57	74	75
N2P	Planning Development at Kam Pok Road Site	56	54	54	57	54	56	64	63	65	67	64	64	61	68	68	59	65	65	65	68	68	75
N3P	Planning Development at Kam Pok Road Site	63	61	61	64	61	60	64	63	65	67	64	64	61	69	68	65	66	66	66	67	69	75
N4P	Planned Development at R(D) Site	66	64	64	67	64	61	61	60	62	64	61	61	59	69	65	67	66	66	66	64	69	75
N5P	Planned Development at R(D) Site	63	61	61	64	61	60	52	51	53	55	52	52	55	65	58	65	62	62	62	55	65	75

Note: Please refer to **Appendix 4-4** and **Appendix 4-4A** for the sample calculation and **Figure 4-2A** for the NSR locations.

* Please refer to **Appendix 1-1** for the construction programme and the duration of concurrent construction activities.

With regard to the above, the mitigated noise level for the NSRs are based on those presented in **Table 4-18** with the adoption of QPMEs and movable noise barriers. While, the mitigated noise levels for NSR N10 and N3 are based on those presented in **Appendix 4-4A** with the adoption of QPMEs, movable noise barriers and temp. fixed noise barrier. For NSR N4, the proposed temp. fixed noise barrier will also provide noise shielding to the Southern Portion as shown in the noise calculation in **Appendix 4-4A**.

Extracted from Table 4-19, "Environmental Impact Assessment Proposed Residential cum Passive Recreational Development within "Recreation" ("REC") Zone and "Residential (Group C)" Zone at Various Lots in DD104, Yuen Long, N.T." (EIA-220/2014).

Calculated construction noise levels of construction activities that will be constructed concurrently with this Project.

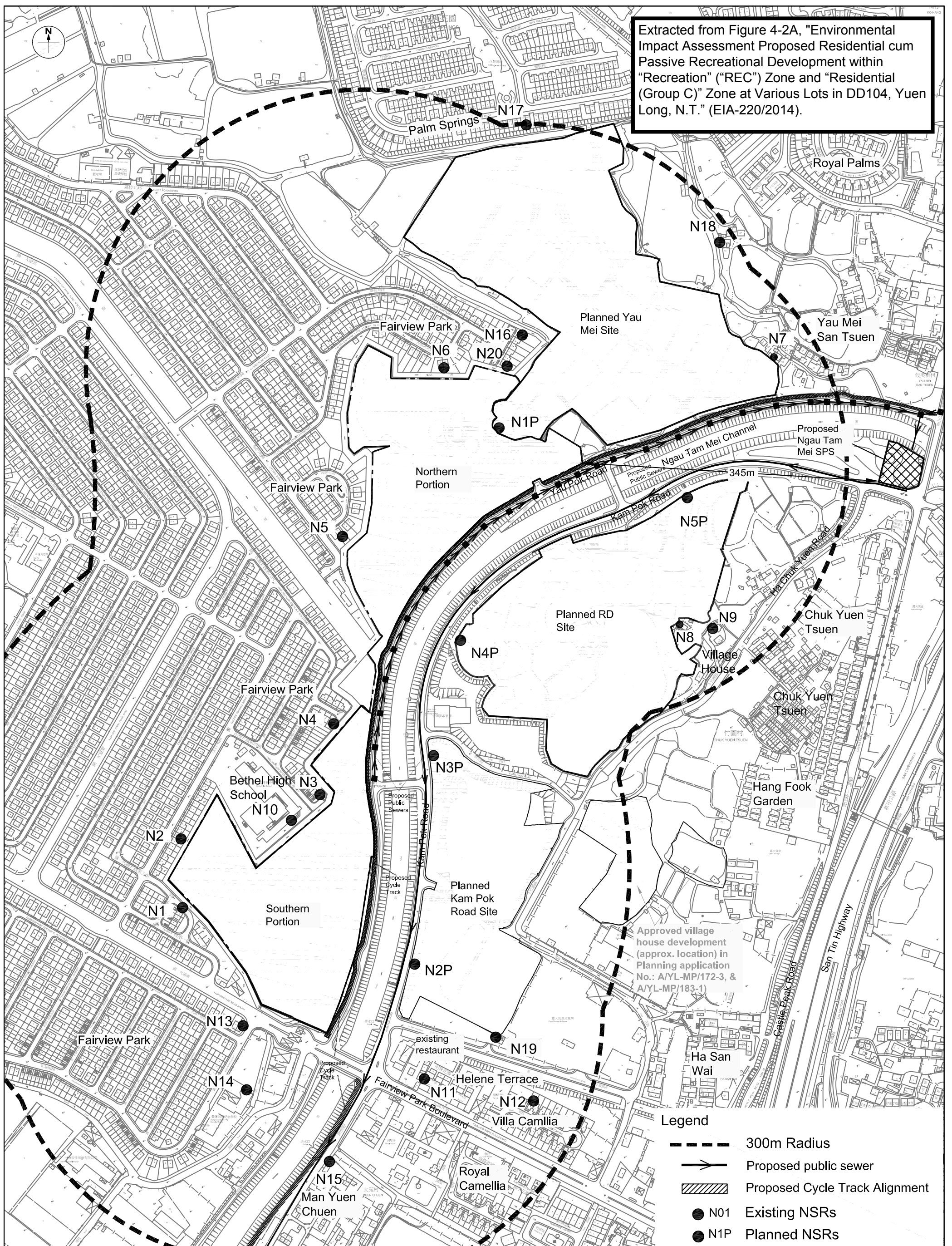


Figure: 4-2A

Title: Representative NSRs Selected for Construction Phase Noise Assessment

Project: EIA for Proposed Residential and Passive Recreation Development within "Recreation" (REC) Zone and "Residential (Group C)" Zone at Various Lots in DD 104, Yuen Long, N.T.



Drawn by: HN

Checked by: TC

Rev.: 1.3

Date: Oct., 2012