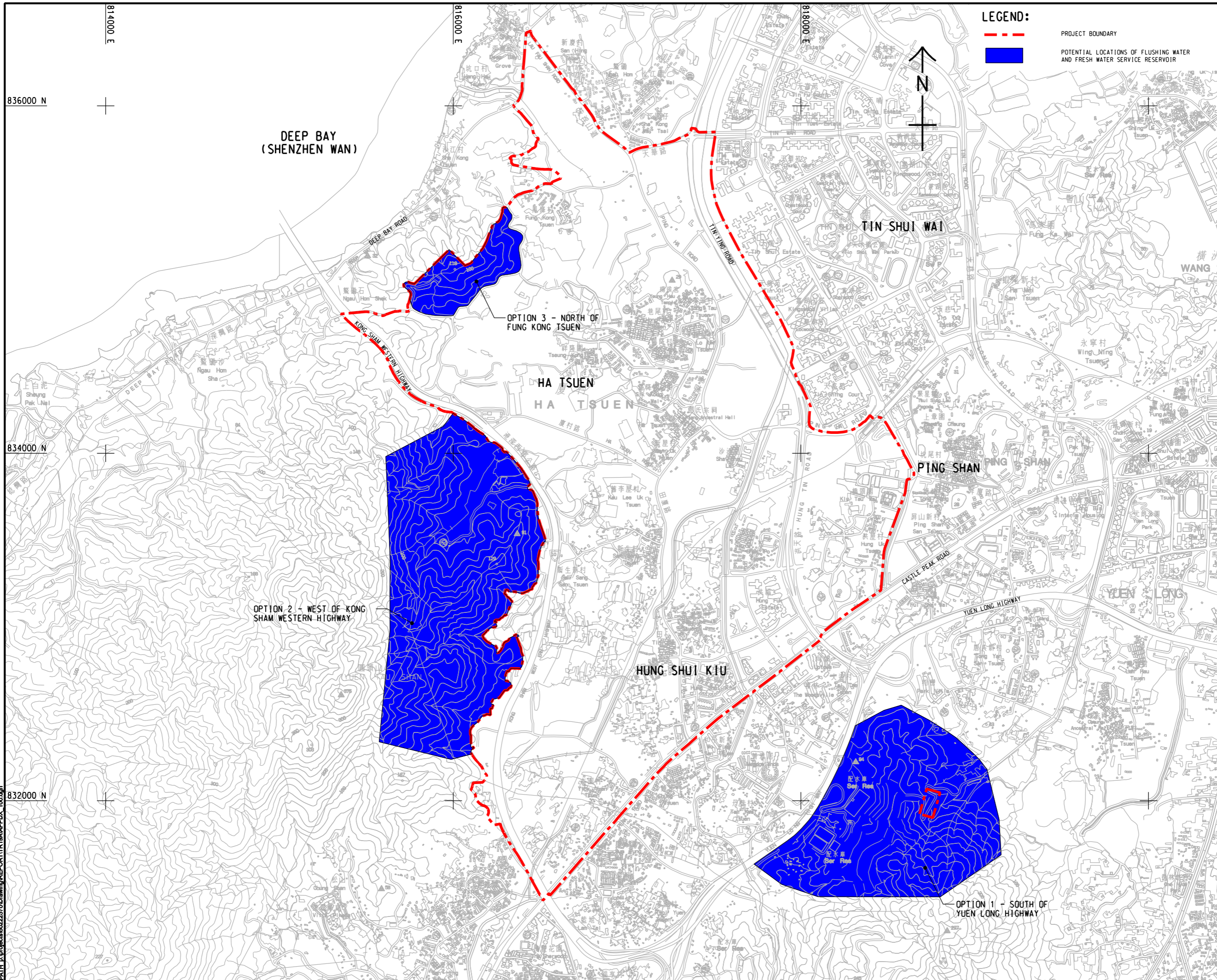


Pld File by: YANGYW
 PATH: E:\projects\60222570\Drawing\REPORT\TR19A\APPDX_100.dgn
 Project Management Initials: Designer: Checked: Approved: ISO A1 594mm x 841mm



LEGEND:

- - - PROJECT BOUNDARY
- POTENTIAL LOCATIONS OF FLUSHING WATER AND FRESH WATER SERVICE RESERVOIR



PROJECT
HUNG SHUI KIU NEW DEVELOPMENT AREA PLANNING AND ENGINEERING STUDY - INVESTIGATION

CLIENT
 土木工程拓展署
 Civil Engineering and Development Department

規劃署
 Planning Department

CONSULTANT
 工務顧問公司
 AECOM Asia Company Ltd.
 www.aecom.com

SUB-CONSULTANTS
 分判工程顧問公司

ISSUE/REVISION
 修訂

IR	DATE	DESCRIPTION	CHK

STATUS
 階段

SCALE
 比例
 A3 1 : 20000

DIMENSION UNIT
 尺寸單位
 METRES

KEY PLAN
 索引圖

PROJECT NO.
 項目編號
 60222570

AGREEMENT NO.
 協議編號
 CE2/2011 (CE)

SHEET TITLE
 圖紙名稱
 CONSIDERATION OF FLUSHING WATER AND FRESH WATER SERVICE RESERVOIR LOCATIONS

SHEET NUMBER
 圖紙編號
 60222570/TR19A/APPENDIX 2.3

This drawing has been prepared for the use of AECOM's client. It may not be used, modified, reproduced or relied upon by third parties, except as agreed by AECOM in writing. AECOM accepts no responsibility, and denies any liability whatsoever, for any party that uses or relies on this drawing without AECOM's express written consent. Do not scale this document. All measurements must be obtained from the stated dimensions.