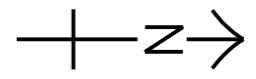


LEGEND:

--- PROJECT BOUNDARY



PROJECT
HUNG SHUI KIU NEW DEVELOPMENT AREA PLANNING AND ENGINEERING STUDY - INVESTIGATION

CLIENT
 CEDD
 土木工程拓展署
 Civil Engineering and Development Department
 規劃署
 Planning Department

CONSULTANT
 AECOM Asia Company Ltd.
 www.aecom.com

SUB-CONSULTANTS
 分判工程顧問公司

ISSUE/REVISION

NO.	DATE	DESCRIPTION	CHK.

STATUS

SCALE
 1:16000
DIMENSION UNIT
 METRES

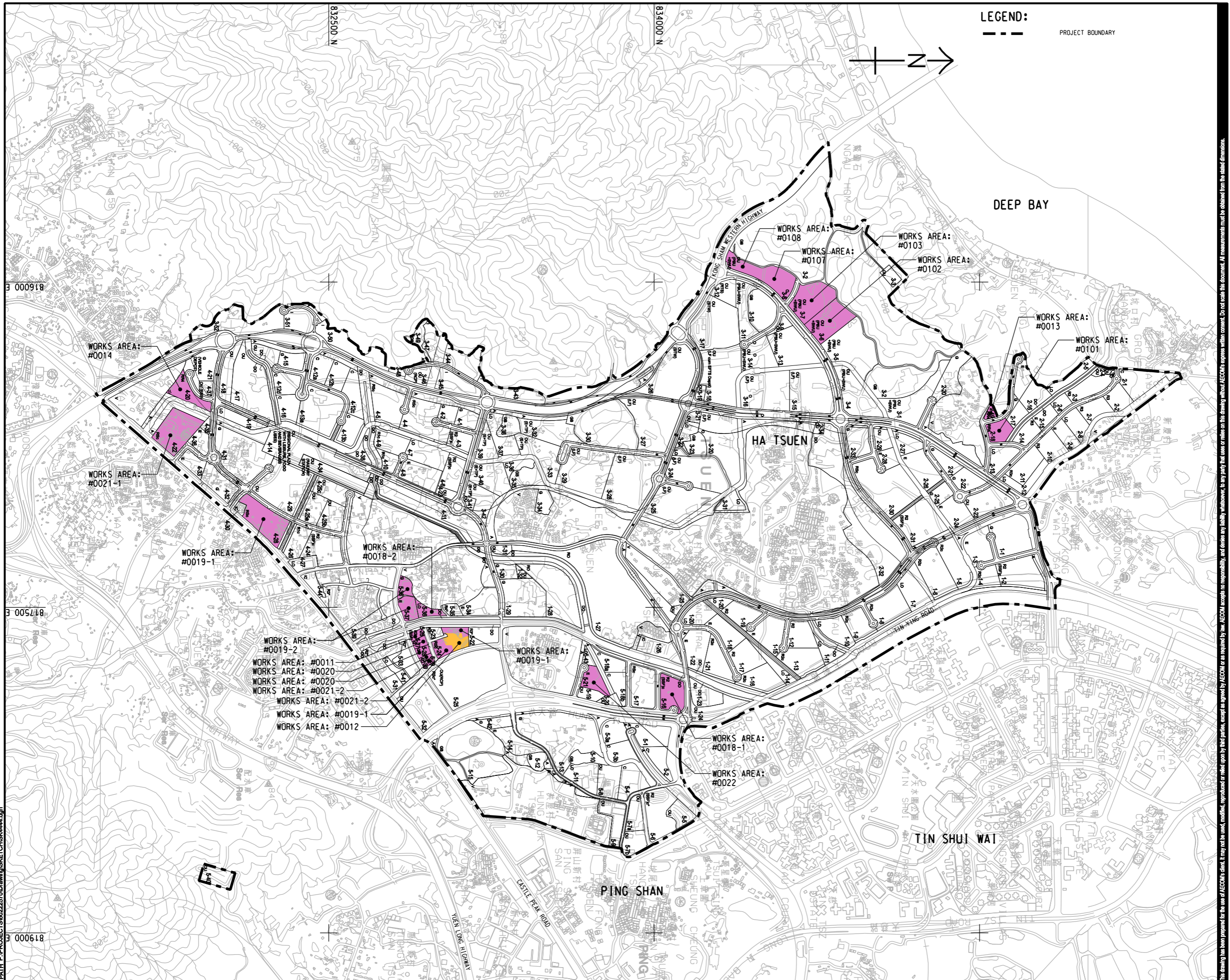
KEY PLAN

PROJECT NO.
 60222570
AGREEMENT NO.
 CE2/2011 (CE)

SHEET TITLE
 ADVANCE WORKS AND STAGE 1 SITE FORMATION

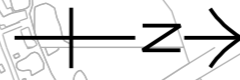
SHEET NUMBER
 60222570/SK4439

This drawing has been prepared for the use of AECOM's client. It may not be used, modified, reproduced or relied upon by third parties, except as required by law. AECOM accepts no responsibility, and denies any liability whatsoever, for any party that uses or relies on this drawing without AECOM's express written consent. Do not scale this document. All measurements must be obtained from the stated dimensions.





LEGEND:

--- PROJECT BOUNDARY



AECOM

PROJECT
HUNG SHUI KIU NEW DEVELOPMENT AREA PLANNING AND ENGINEERING STUDY - INVESTIGATION

CLIENT
 
 土木工程拓展署 規劃署
 Civil Engineering and Development Department Planning Department

CONSULTANT
 工程師有限公司
 AECOM Asia Company Ltd.
 www.aecom.com

SUB-CONSULTANTS
 分判工程師有限公司

ISSUE/REVISION

NO.	DATE	DESCRIPTION	CHK.

STATUS

SCALE

A3 1: 16000

DIMENSION UNIT

METRES

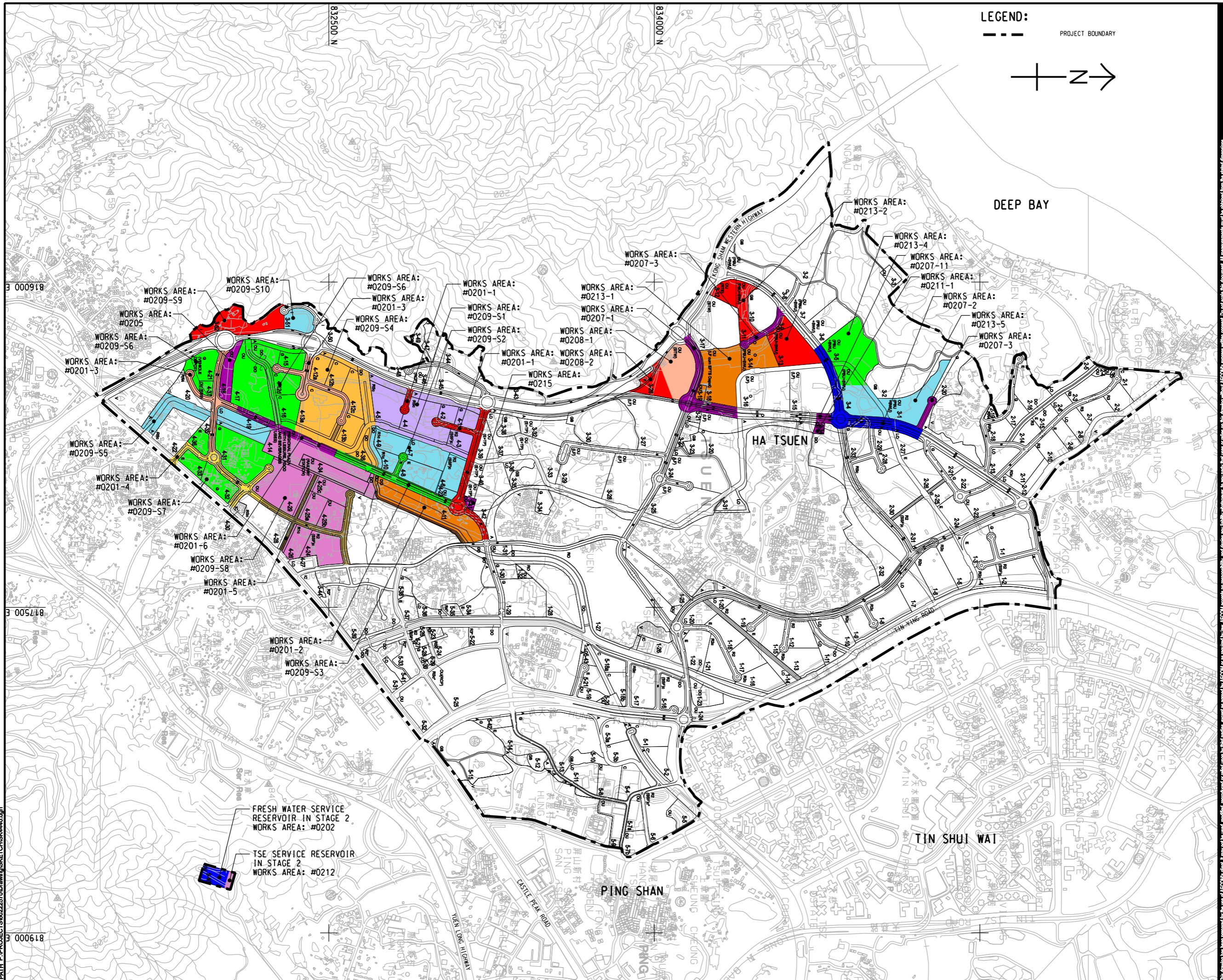
KEY PLAN

PROJECT NO. 60222570
AGREEMENT NO. CE2/2011 (CE)

SHEET TITLE
 ADVANCED WORK AND STAGE 1 SITE DEVELOPMENT

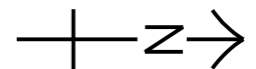
SHEET NUMBER
 60222570/SK4444

This drawing has been prepared for the use of AECOM's client. It may not be used, modified, reproduced or relied upon by third parties, except as required by law. AECOM accepts no responsibility, and denies any liability whatsoever, for any party that uses or relies on this drawing without AECOM's express written consent. Do not scale this document. All measurements must be obtained from the related dimensions.



LEGEND:

--- PROJECT BOUNDARY



PROJECT
HUNG SHUI KIU NEW DEVELOPMENT AREA PLANNING AND ENGINEERING STUDY - INVESTIGATION

CLIENT
 CEDD
 土木工程拓展署
 Civil Engineering and Development Department
 規劃署
 Planning Department

CONSULTANT
 AECOM Asia Company Ltd.
 www.aecom.com

SUB-CONSULTANTS
 分判工程師有限公司

ISSUE/REVISION

NO.	DATE	DESCRIPTION	CHK.

STATUS
 圖則

SCALE
 1:16000

DIMENSION UNIT
 METRES

KEY PLAN
 索引圖

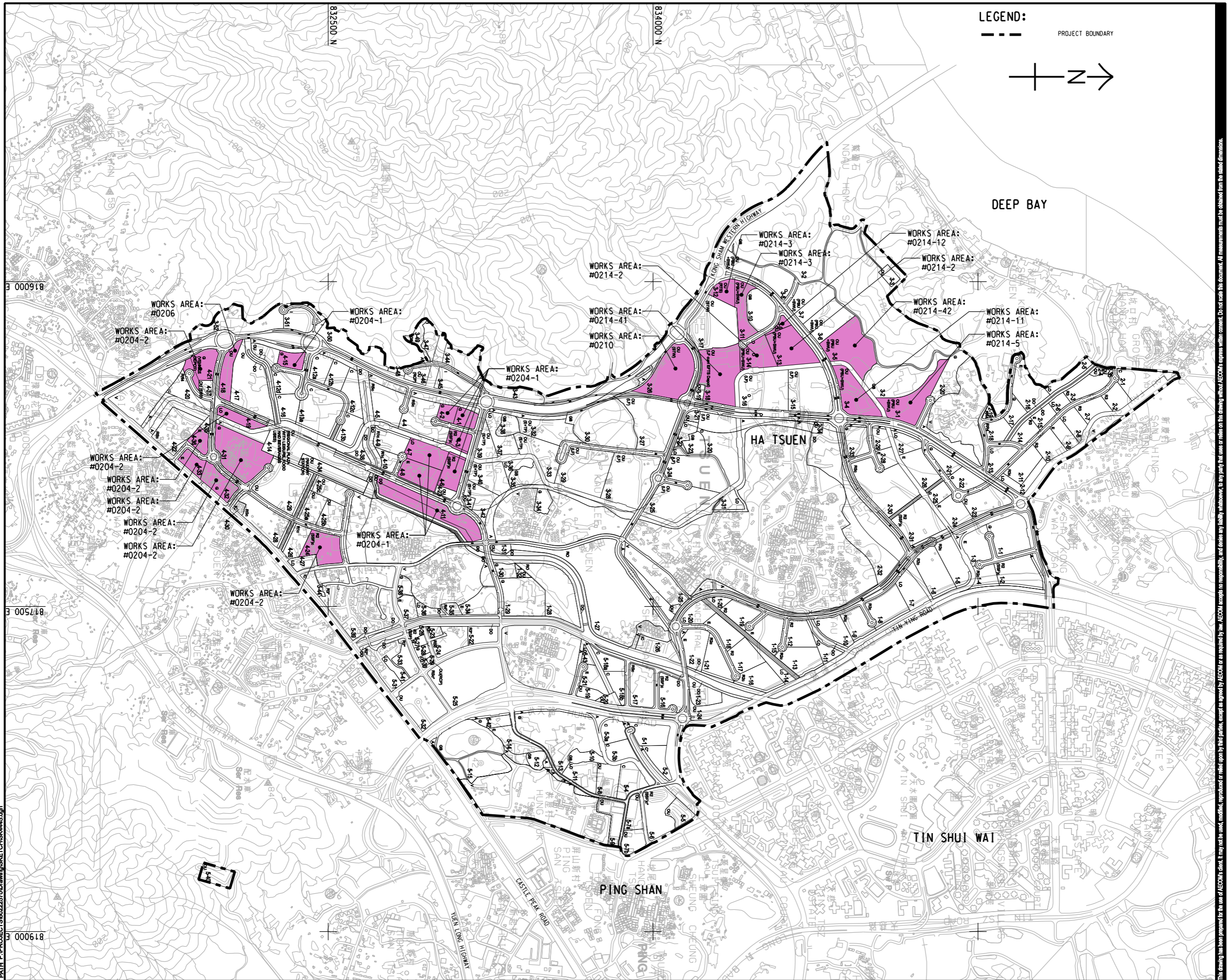
PROJECT NO.
60222570

AGREEMENT NO.
CE2/2011 (CE)

SHEET TITLE
STAGE 2 SITE FORMATION

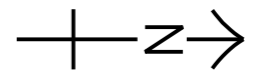
SHEET NUMBER
60222570/SK4440

This drawing has been prepared for the use of AECOM's client. It may not be used, modified, reproduced or relied upon by third parties, except as required by law. AECOM accepts no responsibility, and denies any liability whatsoever, for any party that uses or relies on this drawing without AECOM's express written consent. Do not scale this document. All measurements must be obtained from the stated dimensions.



LEGEND:

--- PROJECT BOUNDARY



PROJECT
HUNG SHUI KIU NEW DEVELOPMENT AREA PLANNING AND ENGINEERING STUDY - INVESTIGATION

CLIENT
 CEDD
 Civil Engineering and Development Department
 土木工程拓展署
 規劃署
 Planning Department

CONSULTANT
 AECOM Asia Company Ltd.
 www.aecom.com

SUB-CONSULTANTS
 分判工程顧問公司

ISSUE/REVISION

IR	DATE	DESCRIPTION	CHK.

STATUS

SCALE
 1:16000
DIMENSION UNIT
 METRES

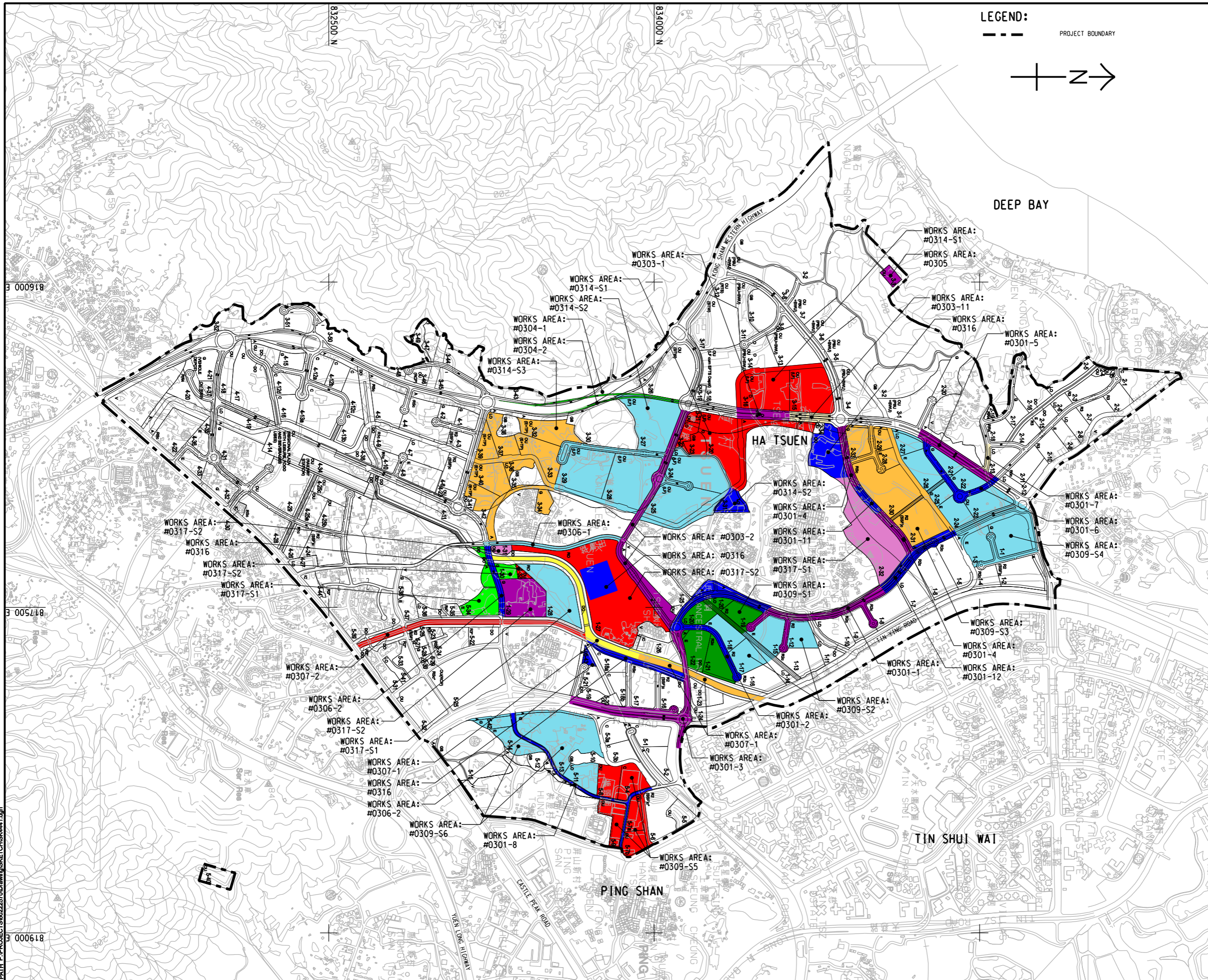
KEY PLAN

PROJECT NO.
 60222570
AGREEMENT NO.
 CE2/2011 (CE)

SHEET TITLE
 STAGE 2 SITE DEVELOPMENT

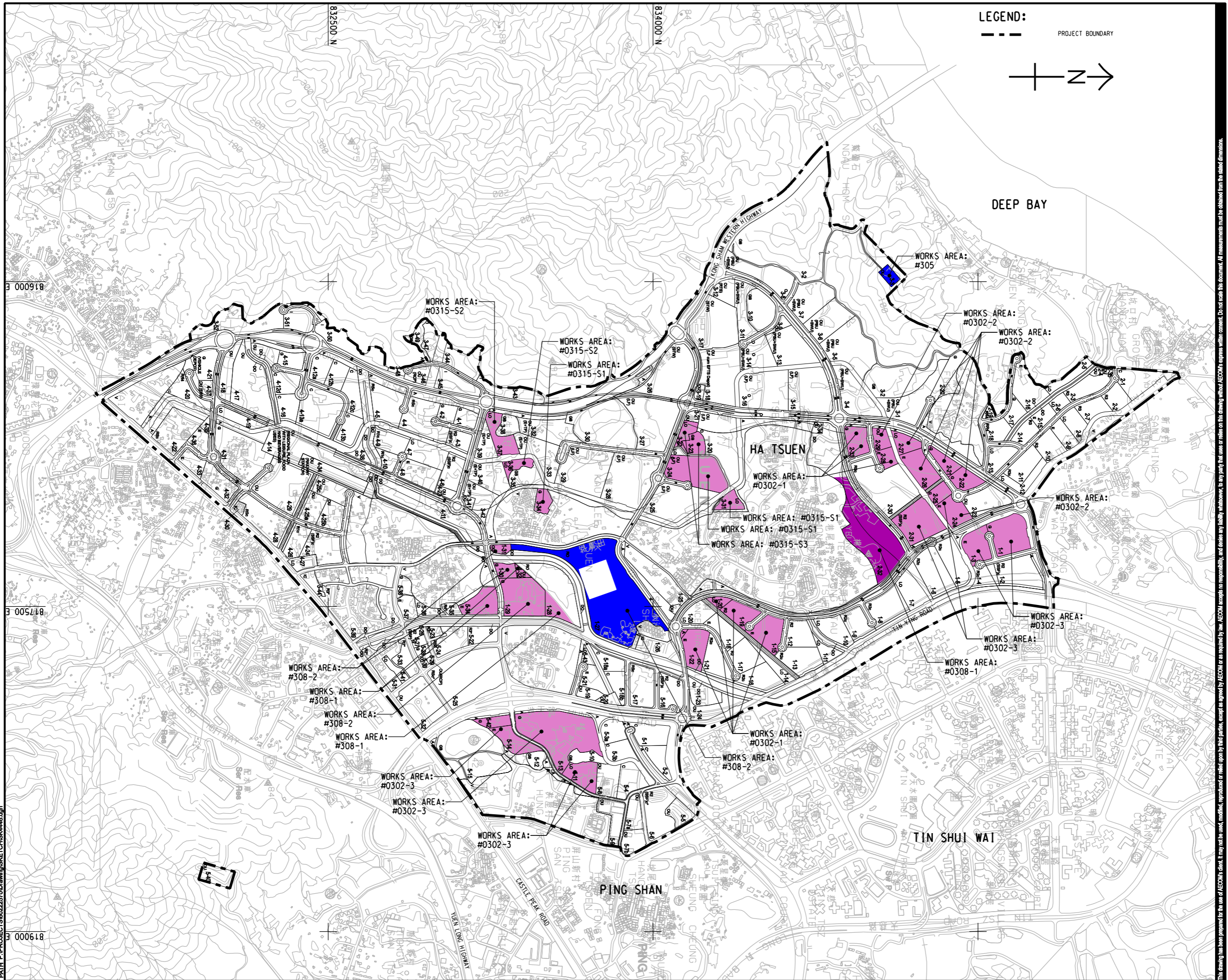
SHEET NUMBER
 60222570/SK4445

This drawing has been prepared for the use of AECOM's client. It may not be used, modified, reproduced or relied upon by third parties, except as required by law. AECOM accepts no responsibility, and denies any liability whatsoever, for any party that uses or relies on this drawing without AECOM's express written consent. Do not scale this document. All measurements must be obtained from the stated dimensions.



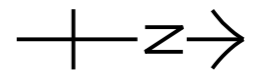
IR	DATE	DESCRIPTION	CHK

This drawing has been prepared for the use of AECOM's client. It may not be used, modified, reproduced or relied upon by third parties, except as required by law. AECOM accepts no responsibility, and denies any liability whatsoever, to any party that uses or relies on this drawing without AECOM's express written consent. Do not scale this document. All measurements must be obtained from the stated dimensions.





LEGEND:

--- PROJECT BOUNDARY



PROJECT
HUNG SHUI KIU NEW DEVELOPMENT AREA PLANNING AND ENGINEERING STUDY - INVESTIGATION

CLIENT
 
 土木工程拓展署 規劃署
 Civil Engineering and Development Department Planning Department

CONSULTANT
 工程師有限公司
 AECOM Asia Company Ltd.
 www.aecom.com

SUB-CONSULTANTS
 分判工程師有限公司

ISSUE/REVISION

IR	DATE	DESCRIPTION	CHK.

STATUS

SCALE **DIMENSION UNIT**

A3 1 : 16000 METRES

KEY PLAN

PROJECT NO. **AGREEMENT NO.**

60222570 CE2/2011 (CE)

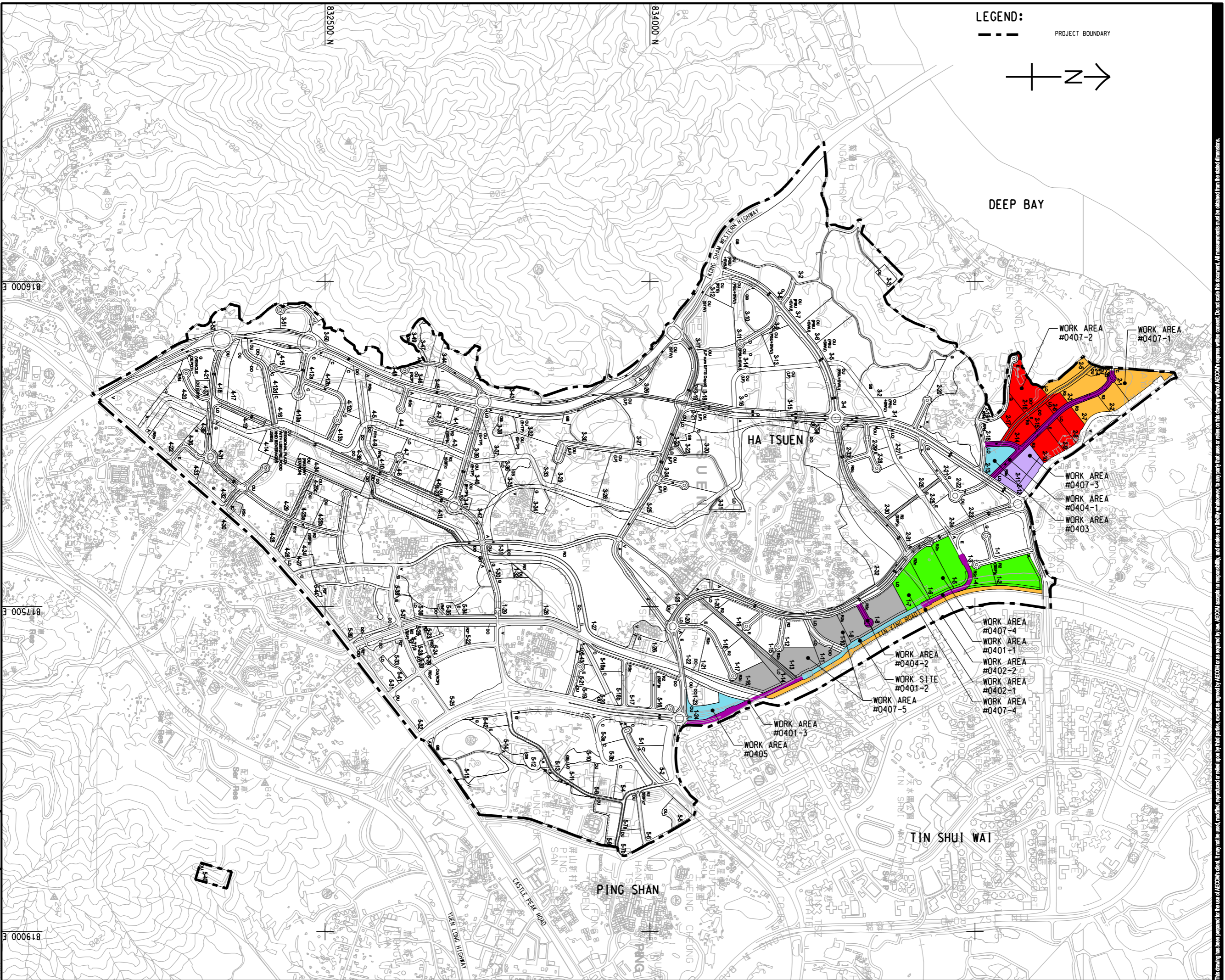
SHEET TITLE

STAGE 3 SITE DEVELOPMENT

SHEET NUMBER

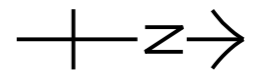
60222570/SK4446

This drawing has been prepared for the use of AECOM's client. It may not be used, modified, reproduced or relied upon by third parties, except as required by law. AECOM accepts no responsibility, and denies any liability whatsoever, for any party that uses or relies on this drawing without AECOM's express written consent. Do not scale this document. All measurements must be obtained from the stated dimensions.





LEGEND:

--- PROJECT BOUNDARY



PROJECT
HUNG SHUI KIU NEW DEVELOPMENT AREA PLANNING AND ENGINEERING STUDY - INVESTIGATION

CLIENT
 
 土木工程拓展署 規劃署
 Civil Engineering and Development Department Planning Department

CONSULTANT
 工程顧問公司
 AECOM Asia Company Ltd.
 www.aecom.com

SUB-CONSULTANTS
 分判工程顧問公司

ISSUE/REVISION

IR	DATE	DESCRIPTION	CHK.

STATUS

SCALE 比例: A3 1:16000
DIMENSION UNIT 尺寸單位: METRES

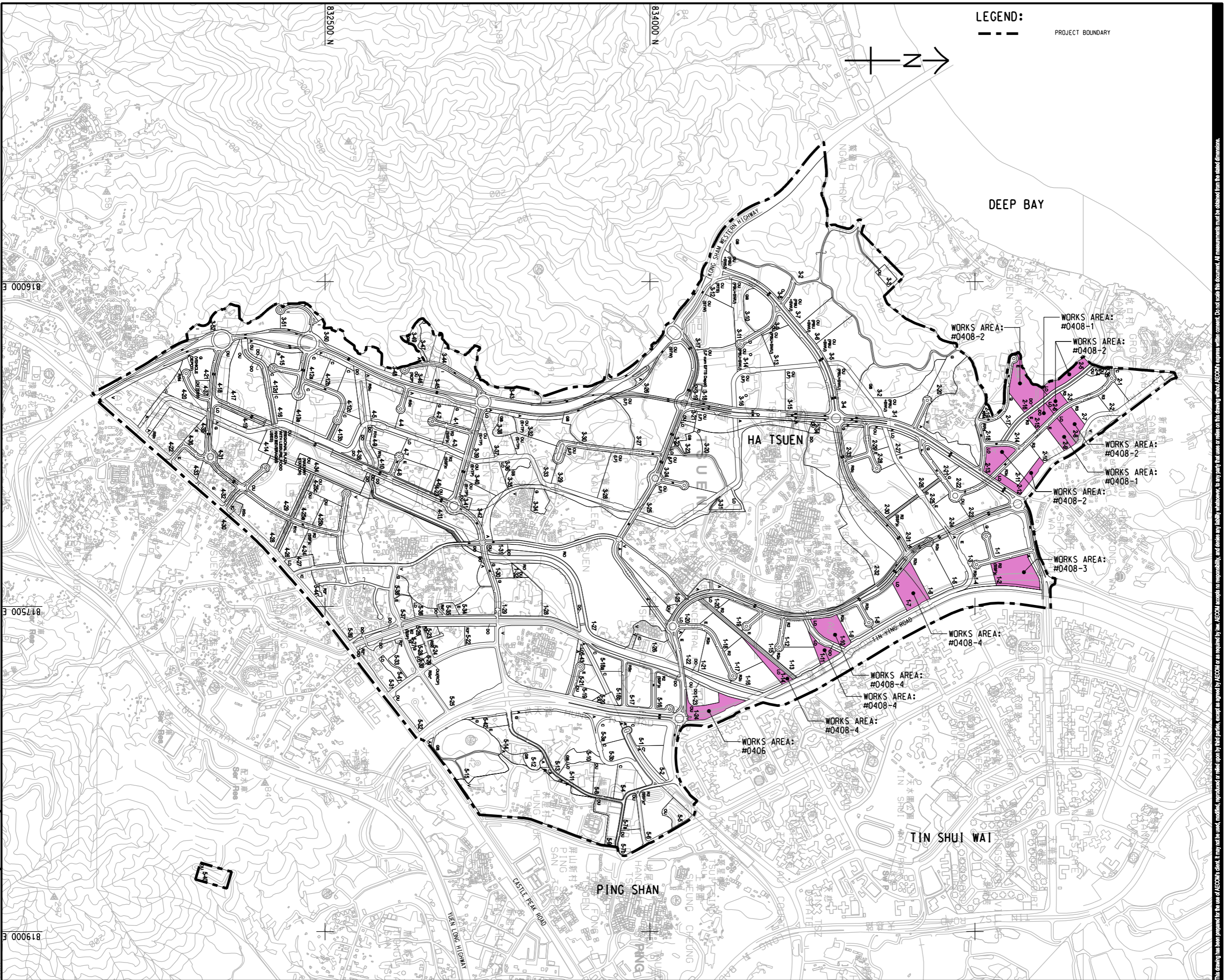
KEY PLAN

PROJECT NO. 項目編號: 60222570
AGREEMENT NO. 協議編號: CE2/2011 (CE)

SHEET TITLE 圖紙名稱: STAGE 4 SITE FORMATION

SHEET NUMBER 圖紙編號: 60222570/SK4442

This drawing has been prepared for the use of AECOM's client. It may not be used, modified, reproduced or relied upon by third parties, except as required by law. AECOM accepts no responsibility, and denies any liability whatsoever, for any party that uses or relies on this drawing without AECOM's express written consent. Do not scale this document. All measurements must be obtained from the stated dimensions.



LEGEND:

--- PROJECT BOUNDARY



PROJECT
HUNG SHUI KIU NEW DEVELOPMENT AREA PLANNING AND ENGINEERING STUDY - INVESTIGATION

CLIENT
 CEDD
 土木工程拓展署
 Civil Engineering and Development Department
 規劃署
 Planning Department

CONSULTANT
 AECOM Asia Company Ltd.
 www.aecom.com

SUB-CONSULTANTS
 分判工程顧問公司

ISSUE/REVISION

IR	DATE	DESCRIPTION	CHK.

STATUS

SCALE
 1:16000
DIMENSION UNIT
 METRES

KEY PLAN

PROJECT NO.
 60222570
AGREEMENT NO.
 CE2/2011 (CE)

SHEET TITLE
 STAGE 4 SITE DEVELOPMENT

SHEET NUMBER
 60222570/SK4447

This drawing has been prepared for the use of AECOM's client. It may not be used, modified, reproduced or relied upon by third parties, except as required by law. AECOM accepts no responsibility, and denies any liability whatsoever, for any party that uses or relies on this drawing without AECOM's express written consent. Do not scale this document. All measurements must be obtained from the stated dimensions.

Appendix 4.5.1 Notional Source Distance (Planned NSRs)

NAP ID	Name	Notional Source Distance from Construction Sites (m)																
		#0201-5	#0209-S5	#0209-S6	#0209-S7	#0209-S8	#0204-2	#0205	#0206	#0301-2	#0301-5	#0301-6	#0309-S1	#0309-S4	#0309-S6	#0302-1	#0302-2	#0302-3
10353	Planned School in Area 1-3																	
10354	Planned School in Area 1-3																	
11203	Planned Residential Development in Area 1-12																	
11556	Planned School in Area 1-15																	
11702	Planned Residential Development in Area 1-17																	
21801	Planned Residential Development in Area 2-18										148	216		224			224	
21802	Planned Residential Development in Area 2-18										146	219		223			223	
21803	Planned Residential Development in Area 2-18										256			283			283	
21901	Planned Residential Development in Area 2-19										263							
23101	Planned Residential Development in Area 2-31																	
40305	Planned Residential Development in Area 4-3																	
40602	Planned Residential Development in Area 4-6																	
42001	Planned Residential Development in Area 4-20		52	95	116		95	138	138									
42005	Planned Residential Development in Area 4-20		39	118	164		118	187	187									
42006	Planned Residential Development in Area 4-20		54	79	171		79	163	163									
42203	Planned Residential Development in Area 4-22		118	273	140		140	282	282									
42216	Planned Residential Development in Area 4-22		60	215	195		195											
42251	Planned Residential Development in Area 4-22		20	183	175		175	264	264									
42806	Planned Residential Development in Area 4-28	33			135	81	135											
42853	Planned Residential Development in Area 4-28	61				84	180											
42859	Planned Residential Development in Area 4-28	82	299		79	89	79											
51601	Planned Residential Development in Area 5-16									255		150				157		
51602	Planned Residential Development in Area 5-16											231				255		
51702	Planned Residential Development in Area 5-17												267		258			254
51703	Planned Residential Development in Area 5-17																	
52151	Planned School in Area 5-21													136				136
52401	Planned Residential Development in Area 5-24																	
52407	Planned Residential Development in Area 5-24																	
52408	Planned Residential Development in Area 5-24																	
52602	Planned Residential Development in Area 5-26																	
52604	Planned Residential Development in Area 5-26																	
53208	Planned Residential Development in Area 5-32													181				181

Appendix 4.5.2 Notional source distance (existing NSRs)

NSRs	#0204-1	#0204-2	#0205	#0206	#0207-1	#0207-2	#0211-1	#0213-1	#0213-4	#0213-5	#0214-11	#0214-41	#0214-42	#0214-5	#0301-1	#0301-2	#0301-3	#0301-4	#0301-5	#0301-6	#0301-7	#0301-8	#0301-11	#0301-12	#0309-51	#0309-52	#0309-53	#0309-54	#0309-55	#0309-56	#0302-1	#0302-2	#0302-3	#0303-1	#0303-2	#0303-11	#0304-1	#0304-2	#0314-51	#0314-52											
ETCW02	No. 739 Oaklands Court		144	270	270																																														
ETCW03	No. 703A, Chung Long Terrace		203																																																
ENW02	No. 202, Shun Fung Wai		260																																																
ESFW01	No. 332, Chung Uk Tsuen		133																																																
ESFW02	Village house, Na Wai		190																																																
ESFW03	No. 368, Sun Fung Wai		120																																																
ESFW04	No. 716, Chung Uk Tsuen		115																																																
ECUT01	No. 16, Chung Uk Tsuen		245																																																
ECUT02	No. 203, Chung Uk Tsuen		174																																																
ESTC51	Shung Tak Catholic English College																																																		
EUPY02	Flat C, Tower 1, Uptown																																																		
ELFS01	No. 30 Lau Fau Shan																																																		
ELFS02	No. 3H, San Hing Tsuen																																																		
ELFS03	No. 310 Sha Kong Wai																																																		
ELFS04	Wing Jan School/Wing Jan Lutheran Church																																																		
ELFS05	No. 1, Lau Fau Shan Road																																																		
ETSW01	Wah Yai House, Tin Yai Estate																																																		
ETSW02	Cantax Lok Kan School																																																		
ETSW03	Shui Lung House, Tin Shui Estate																																																		
ETSW04	The Yuen Yuen Institute MFMB Nei Ming Chan Lui Chung Tak Memorial College																																																		
ETSW05	Shui Fung House, Tin Shui Estate																																																		
ETSW06	Oi Tao House, Tin Oi Court																																																		
ETSW07	Block 7, Loowood Court																																																		
ETSW08	VTC Youth College (Tin Shui Wai)																																																		
ETSW09	Shing Ting House, Tin Shing Court																																																		
ETSW10	Shing Kan House, Tin Shing Court																																																		
ETSW11	YLPMSAA Tang Siu Tong Secondary School																																																		
ETCW01	No. 450, village house		269																																																
E53902	No. 125, Lee Fong Yuen		69																																																
E53903	Village house, Tin Ha Road		73																																																
ETST02	No. 13, Tin Sum		257																																																
ETST04	No.211, Tin Sum		232	182																																															
ETST05a	No. 143, Tin Sum (South Façade)		106	253																																															
ETST05b	No. 143, Tin Sum, (West Façade)		99	262																																															
ETST06	No. 290, Tin Sum		130																																																
ESLUT01	No. 46A, San Lee Uk Tsuen																																																		
ESLUT03	No. 62, San Lee Uk Tsuen																																																		
ESLUT04	No. 254, San Lee Uk Tsuen																																																		
ESLUT05	No. 120, San Lee Uk Tsuen		162																																																
EBC01	House 15, Bellevue Court																																																		
E53905	Village House, Hung Shui Kiu Tin Sam Road																																																		
E53906	Flat C, Tin Sam Villa																																																		
E53104	Flat C, Block 1, Aster Court																																																		
E53106	Flat D, Block 1, Aster Court																																																		

