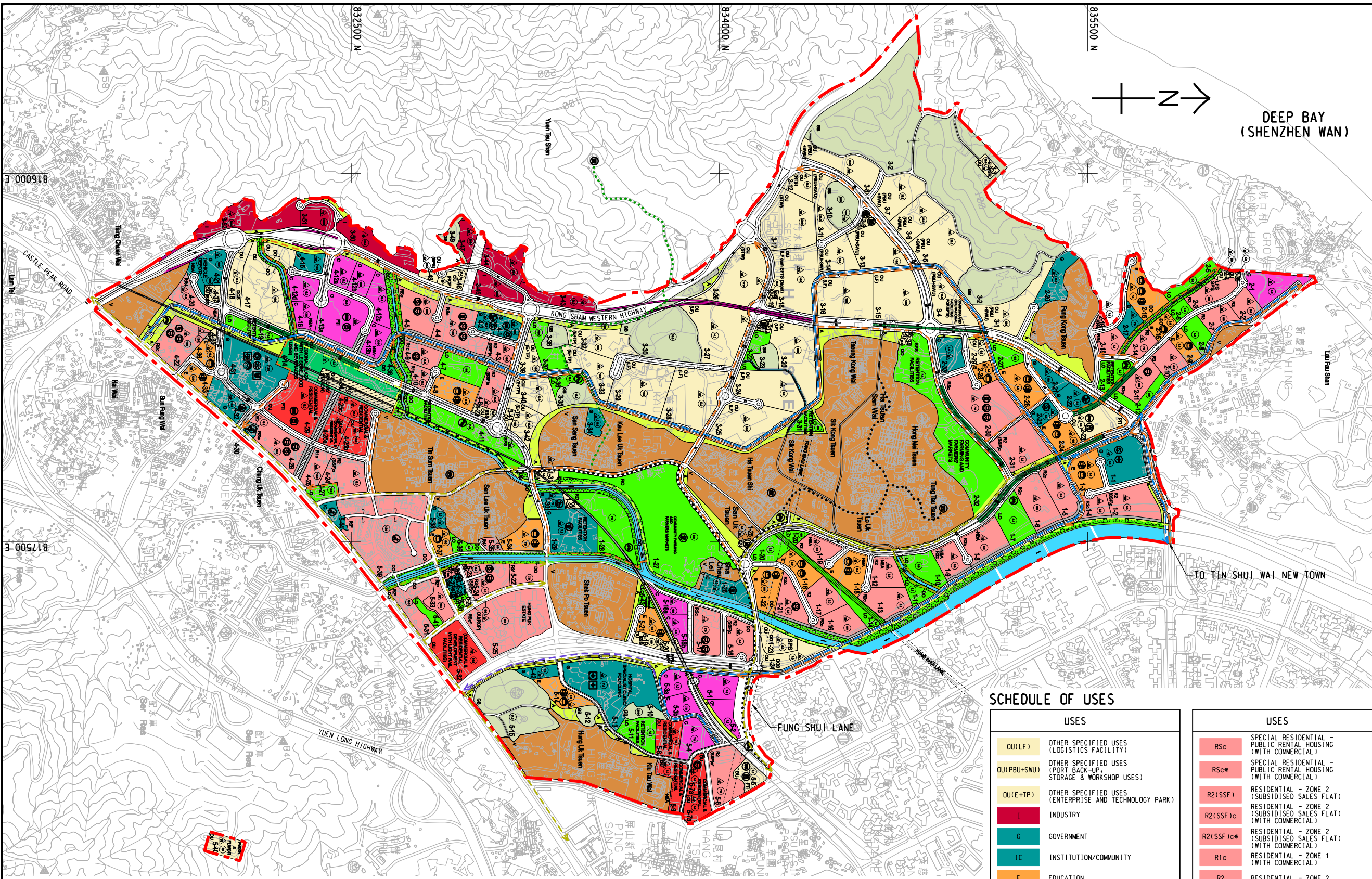


ISO A1 594mm x 841mm  
 Approved:  
 Checked: 000918  
 Designer:  
 Project Management Initials: 817500 E  
 Pld File by: ZENGFX  
 PATH: P:\PROJECTS\6022570\DRAWING\REPORT\TR19A\TR19A\_712.dgn



**AECOM**

PROJECT  
 HUNG SHUI KIU NEW DEVELOPMENT AREA PLANNING AND ENGINEERING STUDY - INVESTIGATION

CLIENT  
 CEDD  
 土木工程拓展署  
 Civil Engineering and Development Department

CONSULTANT  
 AECOM Asia Company Ltd.  
 www.aecom.com

SUB-CONSULTANTS  
 分列工程顧問公司

**ISSUE/REVISION**

| NO. | DATE | DESCRIPTION | CHK. |
|-----|------|-------------|------|
|     |      |             |      |
|     |      |             |      |
|     |      |             |      |
|     |      |             |      |

**SCHEDULE OF USES**

| USES   | USES   |
|--|--|
| OU(LF) OTHER SPECIFIED USES (LOGISTICS FACILITY)                         | RSc SPECIAL RESIDENTIAL - PUBLIC RENTAL HOUSING (WITH COMMERCIAL)        |
| OU(PBU+SWU) OTHER SPECIFIED USES (PORT BACK-UP, STORAGE & WORKSHOP USES) | RSc# SPECIAL RESIDENTIAL - PUBLIC RENTAL HOUSING (WITH COMMERCIAL)       |
| OU(E+TP) OTHER SPECIFIED USES (ENTERPRISE AND TECHNOLOGY PARK)           | R2(SSF) RESIDENTIAL - ZONE 2 (SUBSIDISED SALES FLAT)                     |
| I INDUSTRY   | R2(SSF)c RESIDENTIAL - ZONE 2 (SUBSIDISED SALES FLAT) (WITH COMMERCIAL)  |
| G GOVERNMENT   | R2(SSF)c# RESIDENTIAL - ZONE 2 (SUBSIDISED SALES FLAT) (WITH COMMERCIAL) |
| IC INSTITUTION/COMMUNITY   | R1c RESIDENTIAL - ZONE 1 (WITH COMMERCIAL)                               |
| E EDUCATION  | R2 RESIDENTIAL - ZONE 2  |
| GB GREEN BELT  | R2c RESIDENTIAL - ZONE 2 (WITH COMMERCIAL)                               |
| RO REGIONAL OPEN SPACE   | R2# RESIDENTIAL - ZONE 2   |
| DO DISTRICT OPEN SPACE   | R3 RESIDENTIAL - ZONE 3  |
| LO LOCAL OPEN SPACE  | R3c RESIDENTIAL - ZONE 3 (WITH COMMERCIAL)                               |
| OU OTHER SPECIFIED USES  | R3# RESIDENTIAL - ZONE 3   |
| OU (REGIONAL PLAZA) OTHER SPECIFIED USES (REGIONAL PLAZA)                | RR4 RURAL RESIDENTIAL - ZONE 4   |
| V VILLAGE TYPE DEVELOPMENT   | R4# RESIDENTIAL - ZONE 4   |
| A AMENITY AREA   | C COMMERCIAL   |
| ROAD, JUNCTIONS, EFTS ETC.   | OU(C&R) OTHER SPECIFIED USES (COMMERCIAL & RESIDENTIAL DEVELOPMENT)      |

**LEGEND:**

|  |  |  |  |   |
|--|--|--|--|---|
| --- PROJECT BOUNDARY                                     | NON-BUILDING AREA (NBA)                                  | ● TOWN PARK  | --- EXISTING CYCLE TRACK                                     | --- PBU+SWU PORT BACK-UP, STORAGE AND WORKSHOP USES |
| ... CULTURAL HERITAGE TRAIL                              | --- PROPOSED LEVEL (IN M ABOVE PRINCIPAL DATUM)          | ● DISTRICT POLICE STATION                            | --- PROPOSED ARTERY CYCLEWAY                                 | --- RTS REFUSE TRANSFER STATION                     |
| ... ECO TRAIL  | --- MAXIMUM BUILDING HEIGHT (IN M ABOVE PRINCIPAL DATUM) | ● AMBULANCE DEPOT                                    | --- PROPOSED CYCLE TRACK/REPROVISION OF EXISTING CYCLE TRACK | --- STW SEWAGE TREATMENT WORKS                      |
| --- PROPOSED WEST RAIL HSK STATION                       | ● GOVERNMENT OFFICES                                     | ● HOSPITAL   | --- PTI PUBLIC TRANSPORT INTERCHANGE                         | --- LFS LAU FAU SHAN                                |
| --- DEPRESSED ROAD                                       | ● POLYCLINIC/SPECIALIST CLINIC                           | ● GENERAL CLINIC                                     | --- TSW WRL TIN SHUI WAI WEST RAIL LINE                      | --- RCP REFUSE COLLECTION POINT                     |
| --- ELEVATED ROAD  | ● SOCIAL WELFARE FACILITY                                | ● BUS TERMINUS                                       | --- WRL EAP WEST RAIL LINE EMERGENCY ACCESS POINT            | --- SPS SEWAGE PUMPING STATION                      |
| --- CHANNEL  | ● POST OFFICE  | ● GREEN MINIBUS TERMINUS / PUBLIC LIGHT BUS TERMINUS | --- DCS DISTRICT COOLING SYSTEM                              | --- SSF SUBSIDISED SALES FLAT                       |
| --- SHOPPING STREET                                      | ● DIVISIONAL FIRE STATION                                | ● PETROL FILLING STATION                             | --- E+TP ENTERPRISE AND TECHNOLOGY PARK                      |   |
| --- PEDESTRIAN STREET                                    | ● SPORT GROUND   | ● MAJOR CYCLE PARKING FACILITY                       | --- FLWSR FLUSHING WATER SERVICE RESERVOIR                   |   |
| --- PROPOSED ENVIRONMENTALLY FRIENDLY TRANSPORT SERVICES | ● SECONDARY SCHOOL                                       | ● MAGISTRACY   | --- FWSR FRESH WATER SERVICE RESERVOIR                       |   |
| --- RIVERSIDE PROMENADE                                  | ● PRIMARY SCHOOL   | ● PERFORMANCE VENUE                                  | --- LPG LIQUEFIED PETROLEUM GAS FILLING STATION              |   |
| --- FUNG SHUI LANE                                       | ● CHURCH   | ● PROPOSED GREEN TRANSIT CORRIDOR                    | --- ESS ELECTRICITY SUBSTATION                               |   |
|  | ● KINDERGARTEN   | ● PROPOSED GREEN TRANSIT CORRIDOR EXTENSION          |  |   |
|  | ● TEMPLE   |  |  |   |

\* LAND USES AND DEVELOPMENT PARAMETERS BASED ON THE PROVISIONS IN THE EXISTING OZP / APPROVED DEVELOPMENT SCHEMES.

**STATUS**  
 现状

**SCALE**  
 比例尺: A3 1:16000

**DIMENSION UNIT**  
 尺寸单位: METRES

**KEY PLAN**  
 索引图

**PROJECT NO.**  
 项目编号: 6022570

**AGREEMENT NO.**  
 协议编号: CE2/2011 (CE)

**SHEET TITLE**  
 图名: REVISED RECOMMENDED OUTLINE DEVELOPMENT PLAN (RODP)

**SHEET NUMBER**  
 图号: 6022570/TR19A/FIGURE 2.2

This drawing has been prepared for the use of AECOM's client. It may not be used, modified, reproduced or relied upon by third parties, except as agreed by AECOM or as required by law. AECOM accepts no responsibility, and denies any liability whatsoever, for any part of this drawing that uses or relies on this drawing without AECOM's express written consent. Do not scale this document. All measurements must be obtained from the related dimensions.