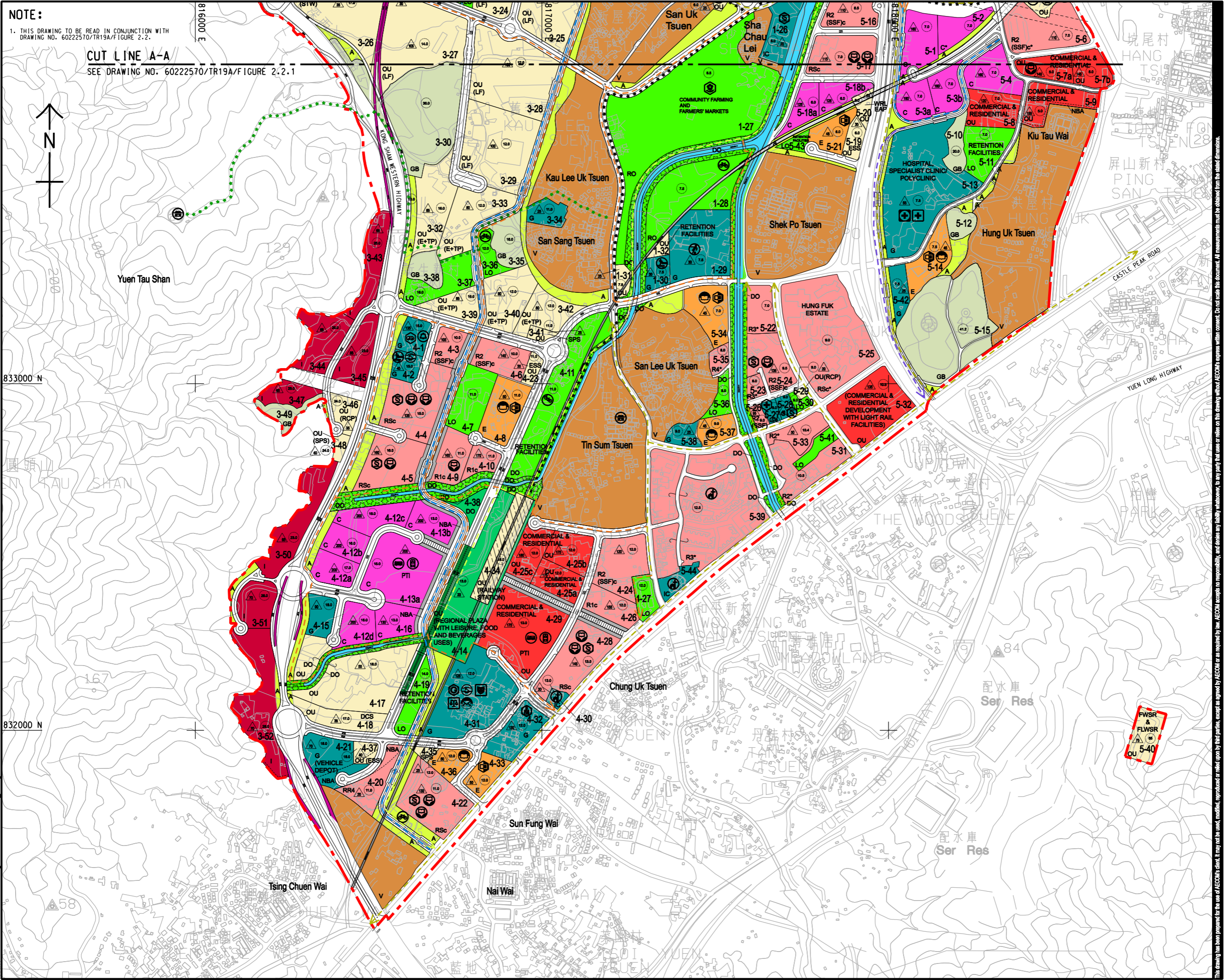
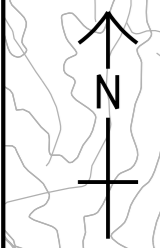


ISO A1 594mm x 841mm  
 Approved:  
 Checked:  
 Designer:  
 Project Management Initials:  
 Pld File by: ZENGFY  
 PATH: P:\PROJECTS\60222570\DRAWING\REPORT\TR19A\TR19A\_714.dgn

**NOTE:**

1. THIS DRAWING TO BE READ IN CONJUNCTION WITH DRAWING NO. 60222570/TR19A/FIGURE 2.2.

**CUT LINE A-A**  
SEE DRAWING NO. 60222570/TR19A/FIGURE 2.2.1



**AECOM**

**PROJECT**  
**HUNG SHUI KIU NEW DEVELOPMENT AREA PLANNING AND ENGINEERING STUDY - INVESTIGATION**

**CLIENT**  
**CEDD**  
 土木工程拓展署  
 Civil Engineering and Development Department

**CONSULTANT**  
**AECOM Asia Company Ltd.**  
 www.aecom.com

**SUB-CONSULTANTS**  
 分列工程顧問公司

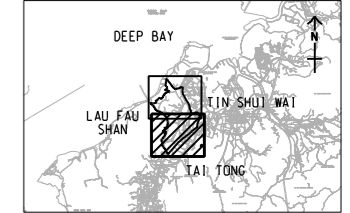
**ISSUE/REVISION**

NO.	DATE	DESCRIPTION	CHK.

**SCALE**  
 比例  
 A3 1 : 10000

**DIMENSION UNIT**  
 尺寸單位  
 METRES

**KEY PLAN**  
 索引圖  
 A3 1 : 500000



**PROJECT NO.**  
 項目編號  
 60222570

**AGREEMENT NO.**  
 協議編號  
 CE2/2011 (CE)

**SHEET TITLE**  
 圖紙標題  
 REVISED RECOMMENDED OUTLINE DEVELOPMENT PLAN (RODP) (SOUTHERN AREA)

**SHEET NUMBER**  
 圖紙號碼  
 60222570/TR19A/FIGURE 2.2.2

SHEET 2 OF 2

This drawing has been prepared for the use of AECOM's client. It may not be used, modified, reproduced or relied upon by third parties, except as approved by AECOM or as required by law. AECOM accepts no responsibility, and disclaims any liability whatsoever, for any party that uses or relies on this drawing without AECOM's express written consent. Do not scale this document. All measurements must be obtained from the stated dimensions.