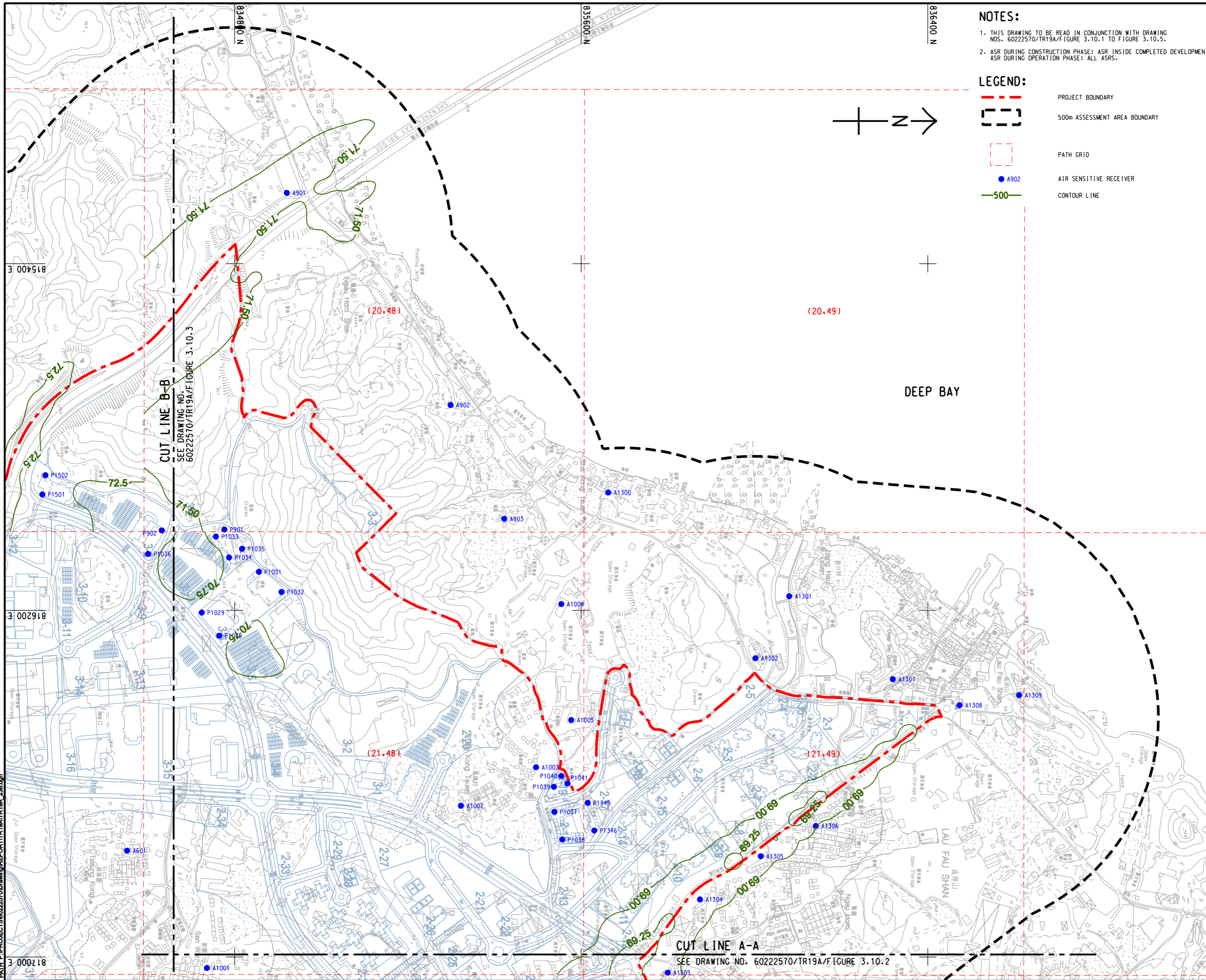


ISO A1 594mm x 841mm
Approved:
Checked:
Designer:
Project Management Initials:
Pld File by: ZENGFX
PATH: P:\PROJECTS\60222570\DRAWING\REPORT\TR19A\TR19A_238.dgn

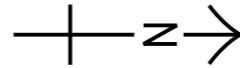


NOTES:

1. THIS DRAWING TO BE READ IN CONJUNCTION WITH DRAWING NOS. 60222570/TR19A/FIGURE 3.10.1 TO FIGURE 3.10.5.
2. ASR DURING CONSTRUCTION PHASE: ASR INSIDE COMPLETED DEVELOPMENT.
ASR DURING OPERATION PHASE: ALL ASRS.

LEGEND:

- PROJECT BOUNDARY
- 500m ASSESSMENT AREA BOUNDARY
- PATH GRID
- AIR SENSITIVE RECEIVER
- CONTOUR LINE



PROJECT
HUNG SHUI KIU NEW DEVELOPMENT AREA PLANNING AND ENGINEERING STUDY - INVESTIGATION

CLIENT

 土木工程拓展署 規劃署
 Civil Engineering and Development Department Planning Department

CONSULTANT
 工程顧問公司
 AECOM Asia Company Ltd.
 www.aecom.com

SUB-CONSULTANTS
 分判工程顧問公司

ISSUE/REVISION
 修訂

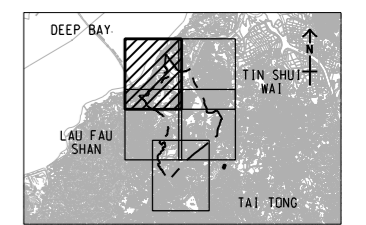
NO.	DATE	DESCRIPTION	CHK.

STATUS
 階段

SCALE
 比例
 A3 1 : 8000

DIMENSION UNIT
 尺寸單位
 METRES

KEY PLAN A3 1 : 300000
 索引圖



PROJECT NO.
 項目編號
 60222570

AGREEMENT NO.
 協議編號
 CE2/2011 (CE)

SHEET TITLE
 圖紙名稱
 CONTOURS OF CUMULATIVE 10th HIGHEST 24-HOUR FSP CONCENTRATION (ug/m³) AT 1.5m ABOVE GROUND (YEAR 2024 - 2030) (OPERATION PHASE)
 SHEET 1 OF 5

SHEET NUMBER
 圖紙編號
 60222570/TR19A/FIGURE 3.10.1

This drawing has been prepared for the use of AECOM's client. It may not be used, modified, reproduced or relied upon by third parties, except as required by law. AECOM accepts no responsibility, and denies any liability whatsoever, to any party that uses or relies on this drawing without AECOM's express written consent. Do not scale this document. All measurements must be obtained from the stated dimensions.