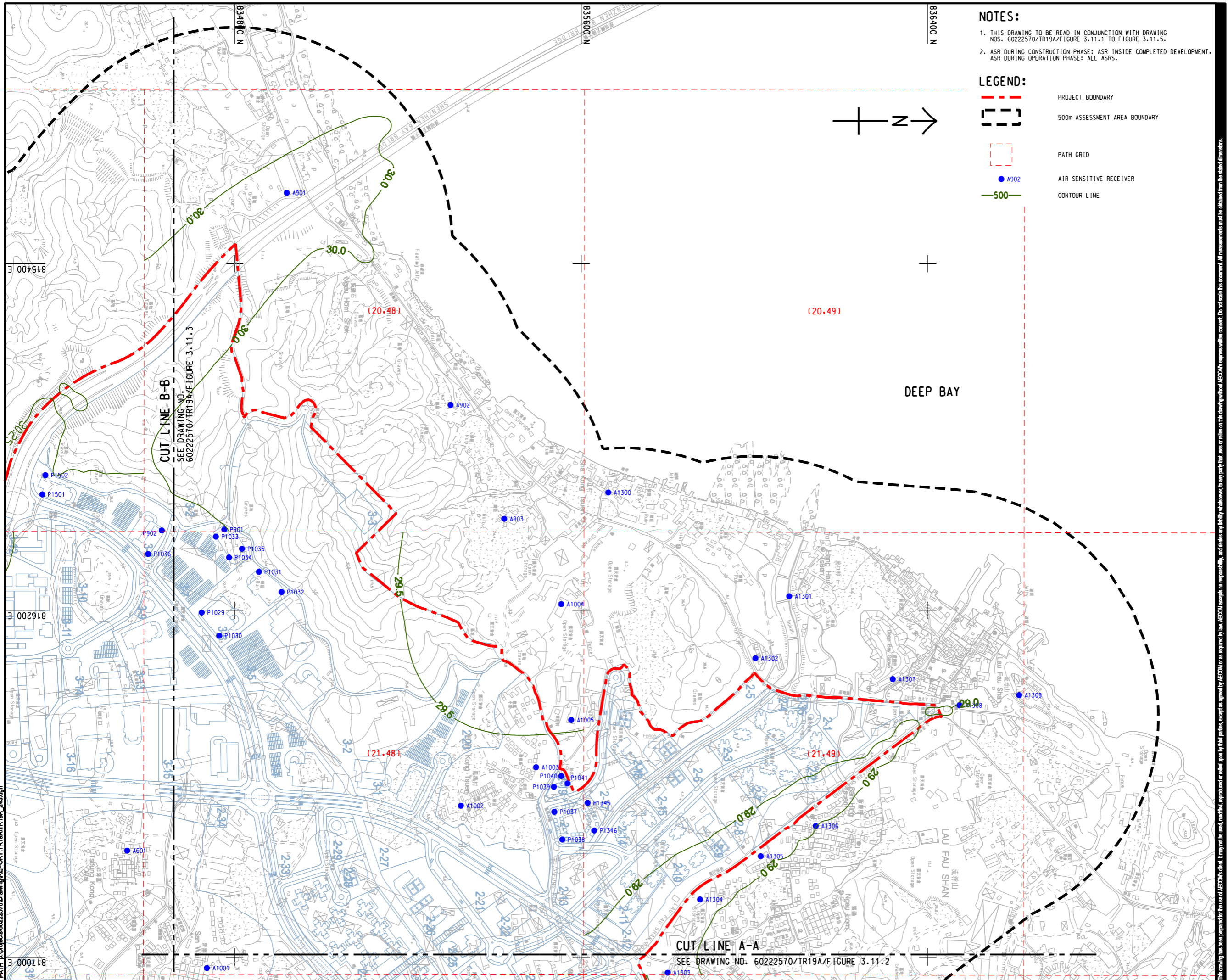


ISO A1 594mm x 841mm  
Approved:  
Checked:  
Designer:  
Project Management Initials:  
Pld File by: ANH  
PATH: E:\projects\60222570\Drawings\REPORT\TR19A\TR19A\_243.dgn

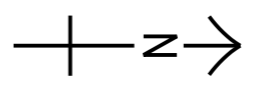


**NOTES:**

- THIS DRAWING TO BE READ IN CONJUNCTION WITH DRAWING NOS. 60222570/TR19A/FIGURE 3.11.1 TO FIGURE 3.11.5.
- ASR DURING CONSTRUCTION PHASE: ASR INSIDE COMPLETED DEVELOPMENT.  
ASR DURING OPERATION PHASE: ALL ASRS.

**LEGEND:**

- - - PROJECT BOUNDARY
- 500m ASSESSMENT AREA BOUNDARY
- PATH GRID
- A902 AIR SENSITIVE RECEIVER
- 500 CONTOUR LINE



**PROJECT**  
**HUNG SHUI KIU NEW DEVELOPMENT AREA PLANNING AND ENGINEERING STUDY - INVESTIGATION**

**CLIENT**  
  
 土木工程拓展署 規劃署  
 Civil Engineering and Development Department Planning Department

**CONSULTANT**  
 工程顧問公司  
 AECOM Asia Company Ltd.  
 www.aecom.com

**SUB-CONSULTANTS**  
 分判工程顧問公司

**ISSUE/REVISION**  
 修訂

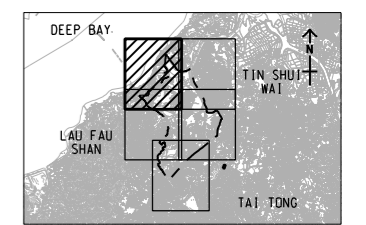
NO.	DATE	DESCRIPTION	CHK.

**STATUS**  
 階段

**SCALE**  
 比例  
 A3 1 : 8000

**DIMENSION UNIT**  
 尺寸單位  
 METRES

**KEY PLAN**  
 索引圖  
 A3 1 : 300000



**PROJECT NO.**  
 項目編號  
 60222570

**AGREEMENT NO.**  
 協議編號  
 CE2/2011 (CE)

**SHEET TITLE**  
 圖紙名稱  
 CONTOURS OF CUMULATIVE ANNUAL FSP CONCENTRATION (ug/m<sup>3</sup>) AT 1.5m ABOVE GROUND (YEAR 2024 - 2030) (OPERATION PHASE)  
 SHEET 1 OF 5

**SHEET NUMBER**  
 圖紙編號  
 60222570/TR19A/FIGURE 3.11.1

This drawing has been prepared for the use of AECOM's client. It may not be used, modified, reproduced or relied upon by third parties, except as required by law. AECOM accepts no responsibility, and denies any liability whatsoever, to any party that uses or relies on this drawing without AECOM's express written consent. Do not scale this document. All measurements must be obtained from the stated dimensions.