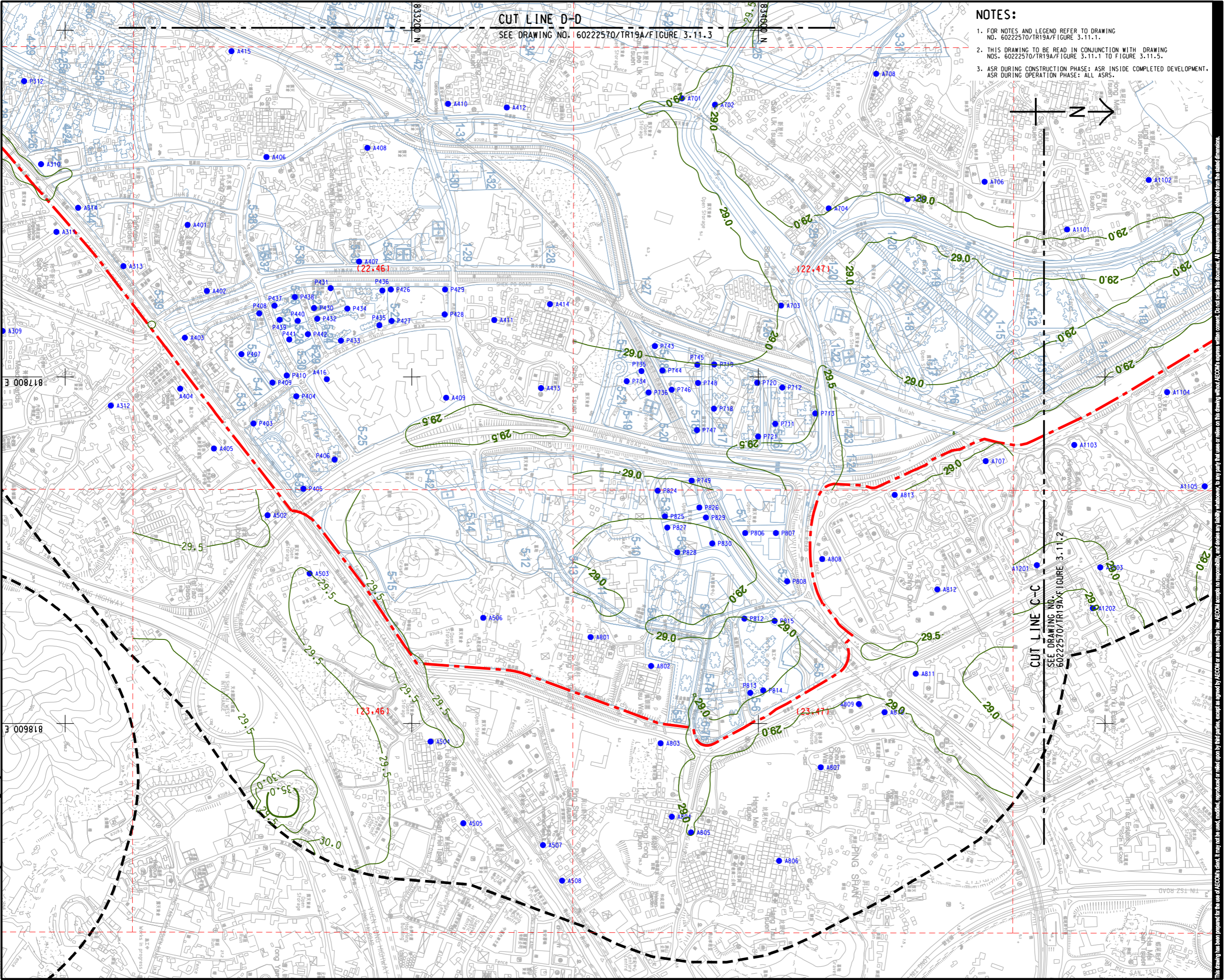


ISO A1 594mm x 841mm
Approved:
Checked:
Designer:
Project Management Initials:
Pld File by: ZENGXF
PATH: P:\PROJECTS\60222570\DRAWING\REPORT\TR19A\TR19A_246.dgn

CUT LINE D-D
SEE DRAWING NO. 60222570/TR19A/FIGURE 3.11.3

- NOTES:**
- FOR NOTES AND LEGEND REFER TO DRAWING NO. 60222570/TR19A/FIGURE 3.11.1.
 - THIS DRAWING TO BE READ IN CONJUNCTION WITH DRAWING NOS. 60222570/TR19A/FIGURE 3.11.1 TO FIGURE 3.11.5.
 - ASR DURING CONSTRUCTION PHASE: ASR INSIDE COMPLETED DEVELOPMENT, ASR DURING OPERATION PHASE: ALL ASRS.



AECOM

PROJECT
HUNG SHUI KIU NEW DEVELOPMENT AREA PLANNING AND ENGINEERING STUDY - INVESTIGATION

CLIENT
CEDD
土木工務拓展署
Civil Engineering and Development Department
規劃署
Planning Department

CONSULTANT
AECOM Asia Company Ltd.
www.aecom.com

SUB-CONSULTANTS
分判工程顧問公司

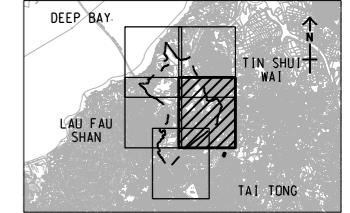
ISSUE/REVISION

IR	DATE	DESCRIPTION	CHK

STATUS

SCALE
A3 1: 8000
A4 1: 30000

DIMENSION UNIT
METRES



PROJECT NO.
60222570

AGREEMENT NO.
CE2/2011 (CE)

SHEET TITLE
CONTOURS OF CUMULATIVE ANNUAL FSP CONCENTRATION (ug/m³) AT 1.5m ABOVE GROUND (YEAR 2024 - 2030) (OPERATION PHASE)

SHEET NUMBER
60222570/TR19A/FIGURE 3.11.4

SHEET 4 OF 5

This drawing has been prepared for the use of AECOM's client. It may not be used, modified, reproduced or relied upon by third parties, except as approved by AECOM or as required by law. AECOM accepts no responsibility, and disclaims any liability whatsoever, for any party that uses or relies on this drawing without AECOM's express written consent. Do not create this document, AECOM's express written consent. Do not create this document, AECOM's express written consent.