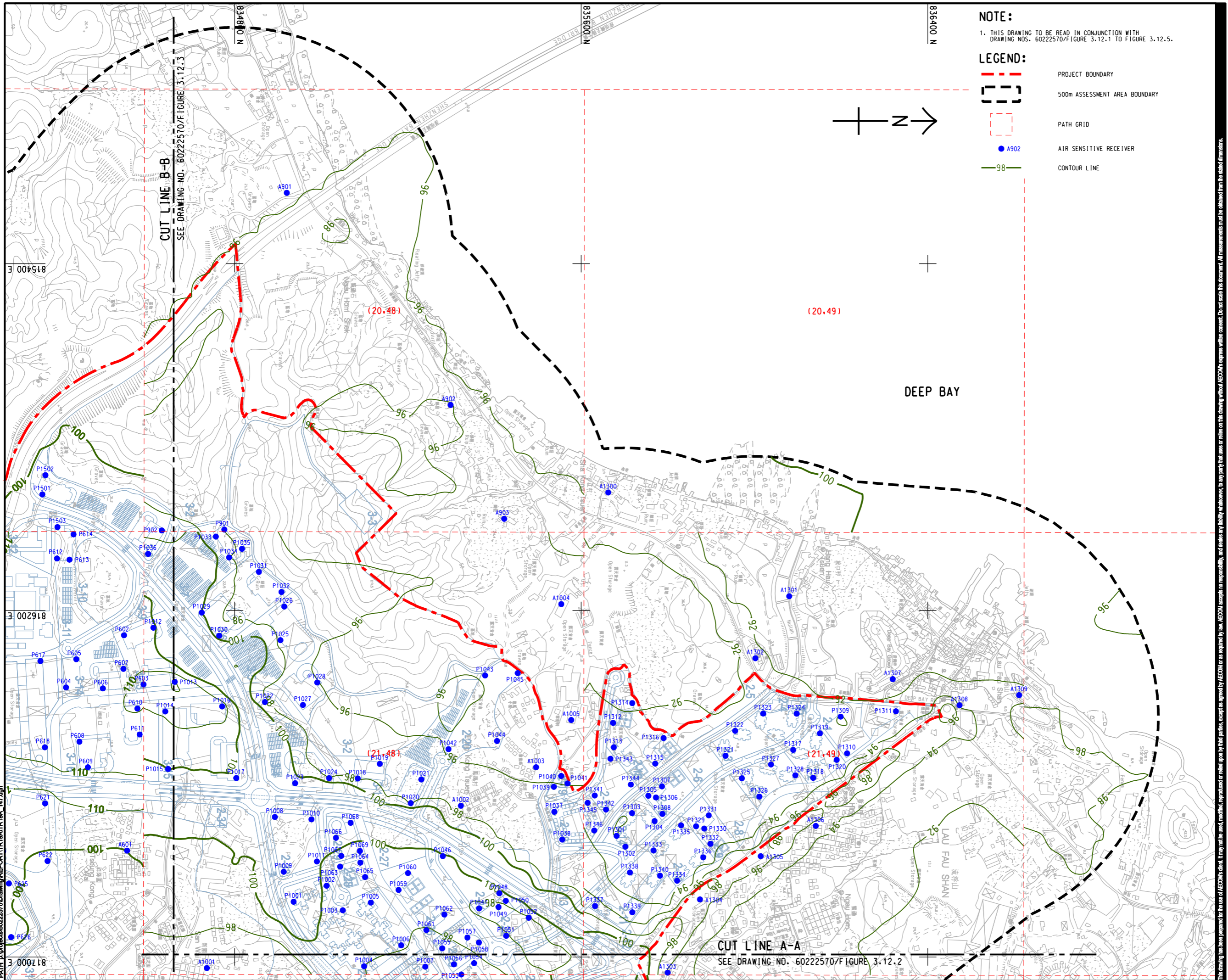
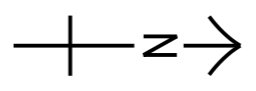


ISO A1 594mm x 841mm
 Approved:
 Checked:
 Designer:
 Project Management Initials:
 Pld File By: ANH
 PATH: E:\projects\60222570\Drawings\REPORT\TR19A\TR19A_147.dgn
 E 17000 18
 E 16200 8
 E 815400 5
 E 815400 5
 E 815400 5



NOTE:
 1. THIS DRAWING TO BE READ IN CONJUNCTION WITH DRAWING NOS. 60222570/FIGURE 3.12.1 TO FIGURE 3.12.5.

- LEGEND:**
- PROJECT BOUNDARY
 - 500m ASSESSMENT AREA BOUNDARY
 - PATH GRID
 - A902 AIR SENSITIVE RECEIVER
 - 98 CONTOUR LINE



AECOM

PROJECT
 HUNG SHUI KIU NEW DEVELOPMENT AREA PLANNING AND ENGINEERING STUDY - INVESTIGATION

CLIENT
 CEDD
 Civil Engineering and Development Department
 土木工程拓展署
 規劃署

CONSULTANT
 AECOM Asia Company Ltd.
 www.aecom.com

SUB-CONSULTANTS
 分判工程顧問公司

ISSUE/REVISION
 修訂

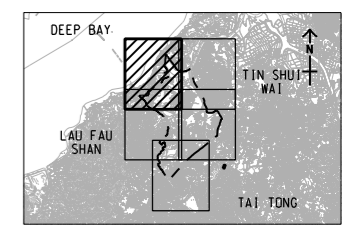
IR	DATE	DESCRIPTION	CHK

STATUS
 階段

SCALE
 比例: A3 1 : 8000

DIMENSION UNIT
 尺寸單位: METRES

KEY PLAN A3 1 : 300000



PROJECT NO.
 項目編號: 60222570

AGREEMENT NO.
 協議編號: CE2/2011 (CE)

SHEET TITLE
 圖則名稱: CONTOURS OF CUMULATIVE 19th HIGHEST 1-HOUR NO₂ CONCENTRATION (ug/m³) AT 1.5m ABOVE GROUND (YEAR 2031 - 2039)

SHEET NUMBER
 圖則編號: SHEET 1 OF 5

60222570/TR19A/FIGURE 3.12.1

This drawing has been prepared for the use of AECOM's client. It may not be used, modified, reproduced or relied upon by third parties, except as approved by AECOM or as required by law. AECOM accepts no responsibility, and denies any liability, whatsoever, for any party that uses or relies on this drawing without AECOM's express written consent. Do not scale this document. All measurements must be obtained from the related dimensions.