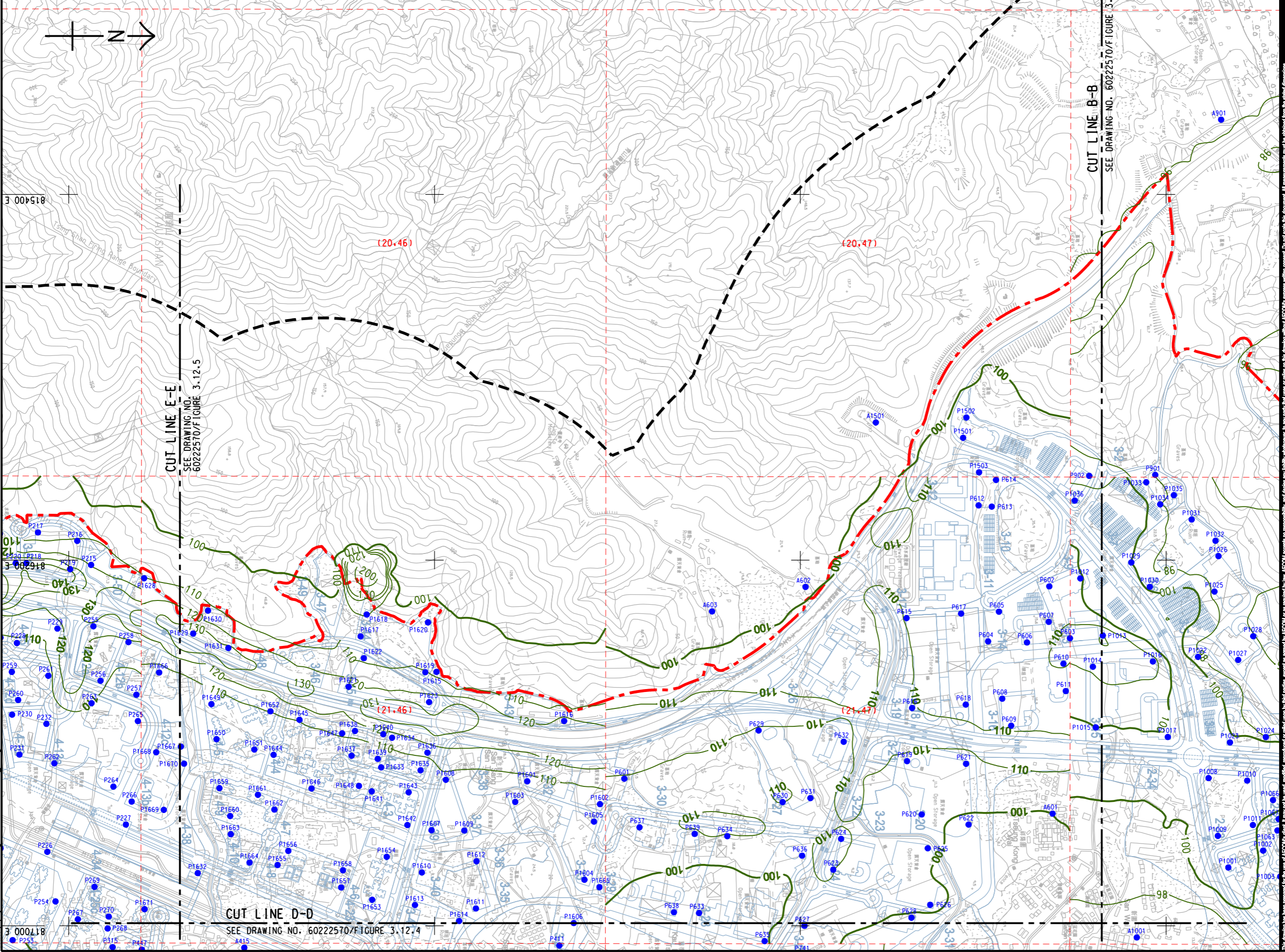


ISO A1 594mm x 841mm
Approved:
Checked:
Designer:
Project Management Initials:
Pld File by: ANH\lisa\60222570\Drawings\REPORT\TR19A\TR19A_149.dgn
PATH: E:\projects\60222570\Drawings\REPORT\TR19A\TR19A_149.dgn

NOTES:
 1. FOR NOTES AND LEGEND REFER TO DRAWING NO. 60222570/FIGURE 3.12.1.
 2. THIS DRAWING TO BE READ IN CONJUNCTION WITH DRAWING NOS. 60222570/FIGURE 3.12.1 TO FIGURE 3.12.5.



AECOM

PROJECT
 HUNG SHUI KIU NEW DEVELOPMENT AREA PLANNING AND ENGINEERING STUDY - INVESTIGATION

CLIENT
 CEDD
 土木工程拓展署
 Civil Engineering and Development Department

CONSULTANT
 AECOM Asia Company Ltd.
 www.aecom.com

SUB-CONSULTANTS
 分判工程顧問公司

ISSUE/REVISION

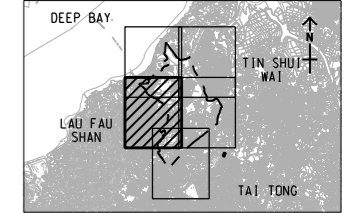
NO.	DATE	DESCRIPTION	CHK.

STATUS
 現狀

SCALE
 比例尺: A3 1:8000

DIMENSION UNIT
 尺寸單位: METRES

KEY PLAN
 索引圖: A3 1:300000



PROJECT NO.
 項目編號: 60222570

AGREEMENT NO.
 協議編號: CE2/2011 (CE)

SHEET TITLE
 圖則標題: CONTOURS OF CUMULATIVE 19th HIGHEST 1-HOUR NO₂ CONCENTRATION (ug/m³) AT 1.5m ABOVE GROUND (YEAR 2031 - 2039)

SHEET NUMBER
 圖則號碼: 60222570/TR19A/FIGURE 3.12.3

SHEET 3 OF 5

This drawing has been prepared for the use of AECOM's client. It may not be used, modified, reproduced or relied upon by third parties, except as approved by AECOM or as required by law. AECOM accepts no responsibility, and disclaims any liability whatsoever, for any party that uses or relies on this drawing without AECOM's express written consent. Do not scale this document. All measurements must be obtained from the stated dimensions.