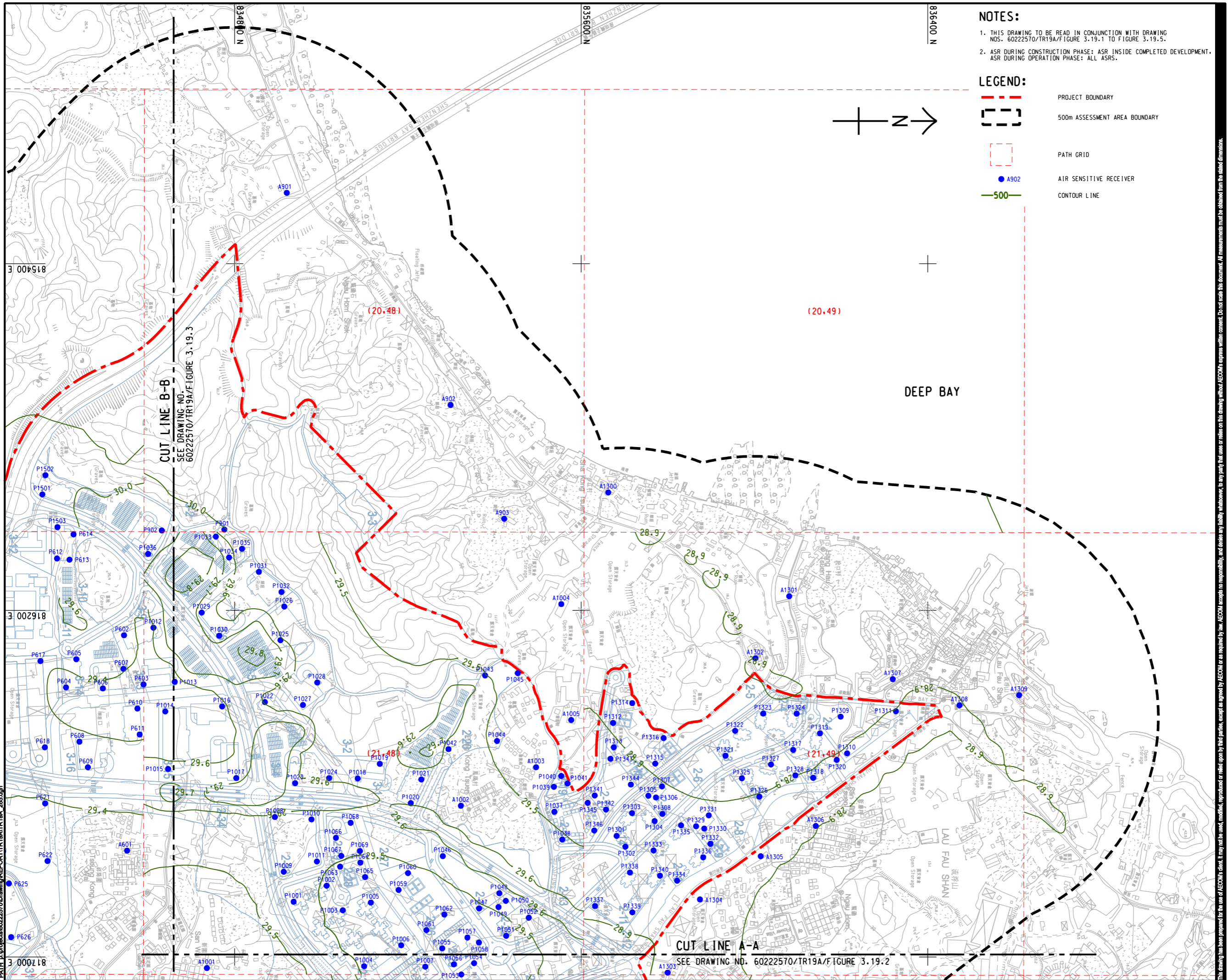


ISO A1 594mm x 841mm
Approved:
Checked:
Designer:
Project Management Initials:
Pld File By: PENGGW
PATH: E:\projects\60222570\Drawings\REPORT\TR19A\TR19A_265.dgn

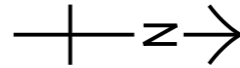


NOTES:

1. THIS DRAWING TO BE READ IN CONJUNCTION WITH DRAWING NOS. 60222570/TR19A/FIGURE 3.19.1 TO FIGURE 3.19.5.
2. ASR DURING CONSTRUCTION PHASE: ASR INSIDE COMPLETED DEVELOPMENT.
ASR DURING OPERATION PHASE: ALL ASRS.

LEGEND:

- - - PROJECT BOUNDARY
- 500m ASSESSMENT AREA BOUNDARY
- PATH GRID
- A902
- 500 CONTOUR LINE



PROJECT

HUNG SHUI KIU NEW DEVELOPMENT AREA PLANNING AND ENGINEERING STUDY - INVESTIGATION

CLIENT



CONSULTANT

AECOM Asia Company Ltd.
www.aecom.com

SUB-CONSULTANTS

ISSUE/REVISION

IR	DATE	DESCRIPTION	CHK

STATUS

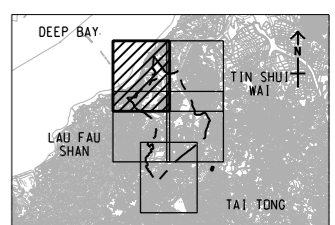
SCALE

A3 1 : 8000

DIMENSION UNIT

METRES

KEY PLAN



PROJECT NO.

60222570

AGREEMENT NO.

CE2/2011 (CE)

SHEET TITLE

CONTOURS OF CUMULATIVE ANNUAL FSP CONCENTRATION (ug/m³) AT 1.5m ABOVE GROUND (YEAR 2031 - 2039) (OPERATION PHASE)

SHEET NUMBER

60222570/TR19A/FIGURE 3.19.1

This drawing has been prepared for the use of AECOM's client. It may not be used, modified, reproduced or relied upon by third parties, except as required by law. AECOM accepts no responsibility, and denies any liability whatsoever, for any party that uses or relies on this drawing without AECOM's express written consent. Do not scale this document. All measurements must be obtained from the related dimensions.

CUT LINE A-A
SEE DRAWING NO. 60222570/TR19A/FIGURE 3.19.2

CUT LINE B-B
SEE DRAWING NO. 60222570/TR19A/FIGURE 3.19.3