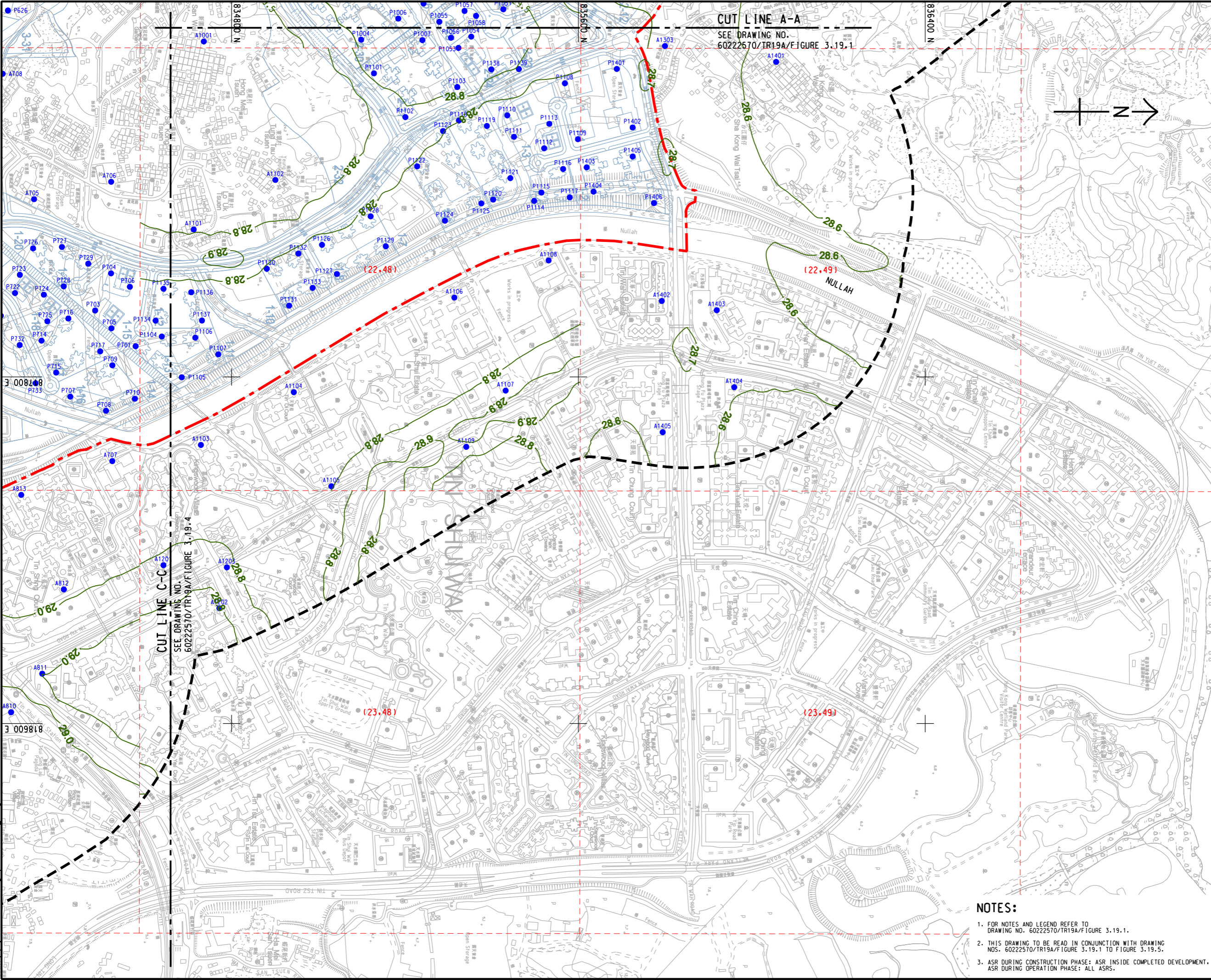


Pld File by: ZENGFX
PATH: E:\projects\6022570\drawing\center\0a\TR19A_288.dgn



PROJECT
HUNG SHUI KIU NEW DEVELOPMENT AREA PLANNING AND ENGINEERING STUDY - INVESTIGATION

CLIENT
CEDD
Civil Engineering and Development Department
Planning Department

CONSULTANT
AECOM Asia Company Ltd.
www.aecom.com

SUB-CONSULTANTS
分判工程顧問公司

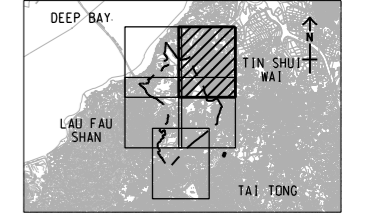
ISSUE/REVISION

NO.	DATE	DESCRIPTION	CHK.

STATUS

NO.	DATE	DESCRIPTION	CHK.

SCALE
A3 1 : 8000
DIMENSION UNIT
METRES



PROJECT NO.
6022570
AGREEMENT NO.
CE2/2011 (CE)

SHEET TITLE
CONTOURS OF CUMULATIVE ANNUAL FSP CONCENTRATION (ug/m³) AT 1.5m ABOVE GROUND (YEAR 2031 - 2039) (OPERATION PHASE)
SHEET NUMBER
6022570/TR19A/FIGURE 3.19.2

- NOTES:**
- FOR NOTES AND LEGEND REFER TO DRAWING NO. 6022570/TR19A/FIGURE 3.19.1.
 - THIS DRAWING TO BE READ IN CONJUNCTION WITH DRAWING NOS. 6022570/TR19A/FIGURE 3.19.1 TO FIGURE 3.19.5.
 - ASR DURING CONSTRUCTION PHASE: ASR INSIDE COMPLETED DEVELOPMENT. ASR DURING OPERATION PHASE: ALL ASRS.

This drawing has been prepared for the use of AECOM's client. It may not be used, modified, reproduced or relied upon by third parties, except as required by law. AECOM accepts no responsibility, and does not warrant, for any party that uses or relies on this drawing without AECOM's express written consent. Do not scale this document. All measurements must be obtained from the stated dimensions.