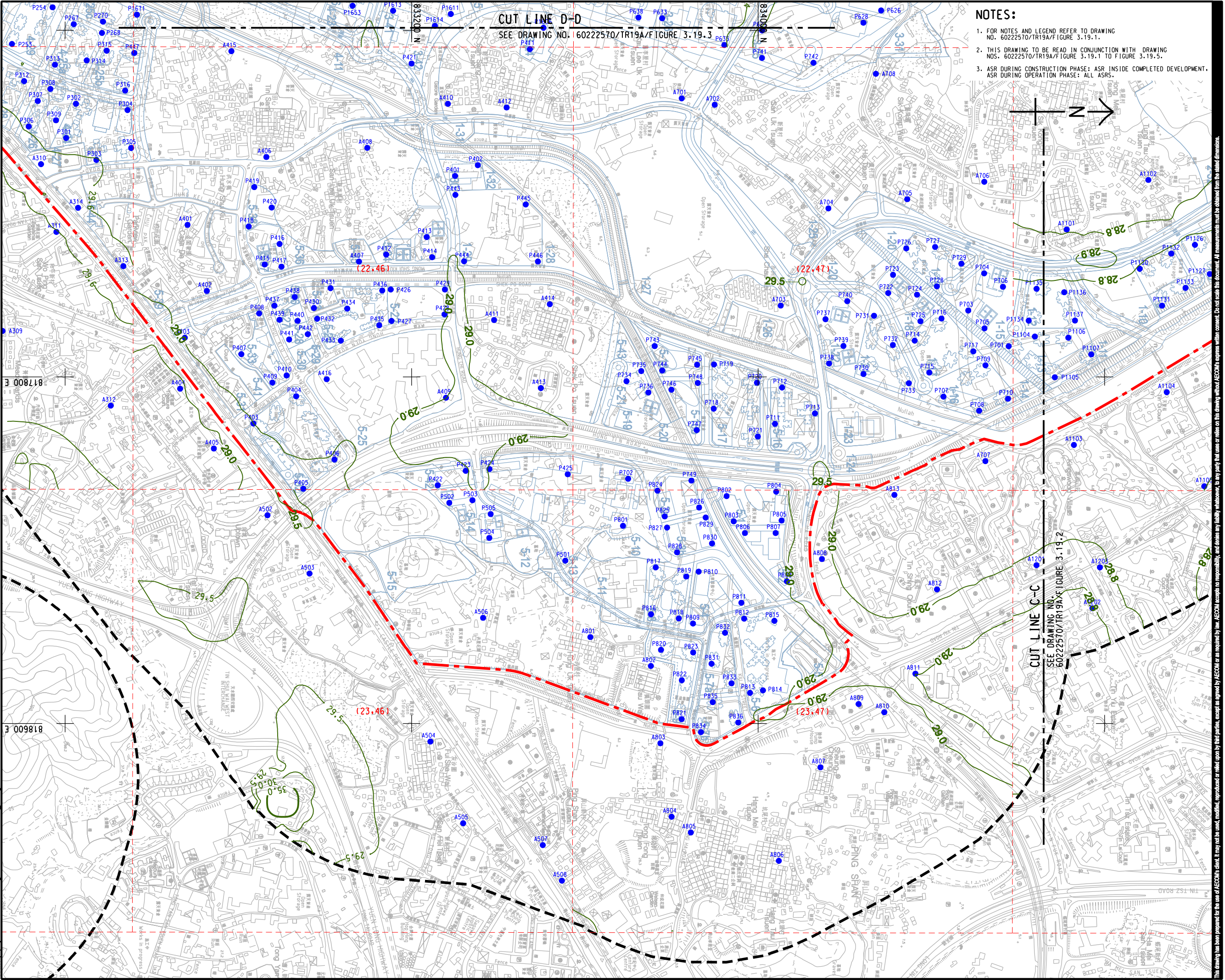


ISO A1 594mm x 841mm
Approved:
Checked:
Designer:
Project Management Initials:
Pld File by: PENGGW
PATH: E:\projects\60222570\Drawing\REPORT\TR19A\TR19A_288.dgn



CUT LINE D-D
SEE DRAWING NO. 60222570/TR19A/FIGURE 3.19.3

- NOTES:**
- FOR NOTES AND LEGEND REFER TO DRAWING NO. 60222570/TR19A/FIGURE 3.19.1.
 - THIS DRAWING TO BE READ IN CONJUNCTION WITH DRAWING NOS. 60222570/TR19A/FIGURE 3.19.1 TO FIGURE 3.19.5.
 - ASR DURING CONSTRUCTION PHASE: ASR INSIDE COMPLETED DEVELOPMENT, ASR DURING OPERATION PHASE: ALL ASRS.

AECOM

PROJECT
HUNG SHUI KIU NEW DEVELOPMENT AREA PLANNING AND ENGINEERING STUDY - INVESTIGATION

CLIENT
CEDD
土木工程拓展署
Civil Engineering and Development Department
規劃署
Planning Department

CONSULTANT
AECOM Asia Company Ltd.
www.aecom.com

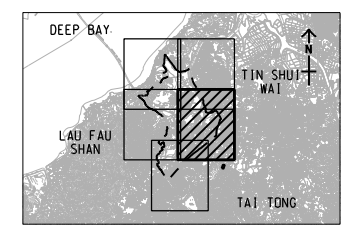
SUB-CONSULTANTS
分判工程顧問公司

ISSUE/REVISION

IR	DATE	DESCRIPTION	CHK.

STATUS

SCALE
A3 1 : 8000
DIMENSION UNIT
METRES



PROJECT NO. 60222570
AGREEMENT NO. CE2/2011 (CE)

SHEET TITLE
CONTOURS OF CUMULATIVE ANNUAL FSP CONCENTRATION (ug/m³) AT 1.5m ABOVE GROUND (YEAR 2031 - 2039) (OPERATION PHASE)

SHEET NUMBER SHEET 4 OF 5
60222570/TR19A/FIGURE 3.19.4

This drawing has been prepared for the use of AECOM's client. It may not be used, modified, reproduced or relied upon by third parties, except as approved by AECOM or as required by law. AECOM accepts no responsibility, and disclaims any liability, whatsoever, for any party that uses or relies on this drawing without AECOM's express written consent. Do not erase this document. AECOM's express written consent must be obtained from the related dimensions.